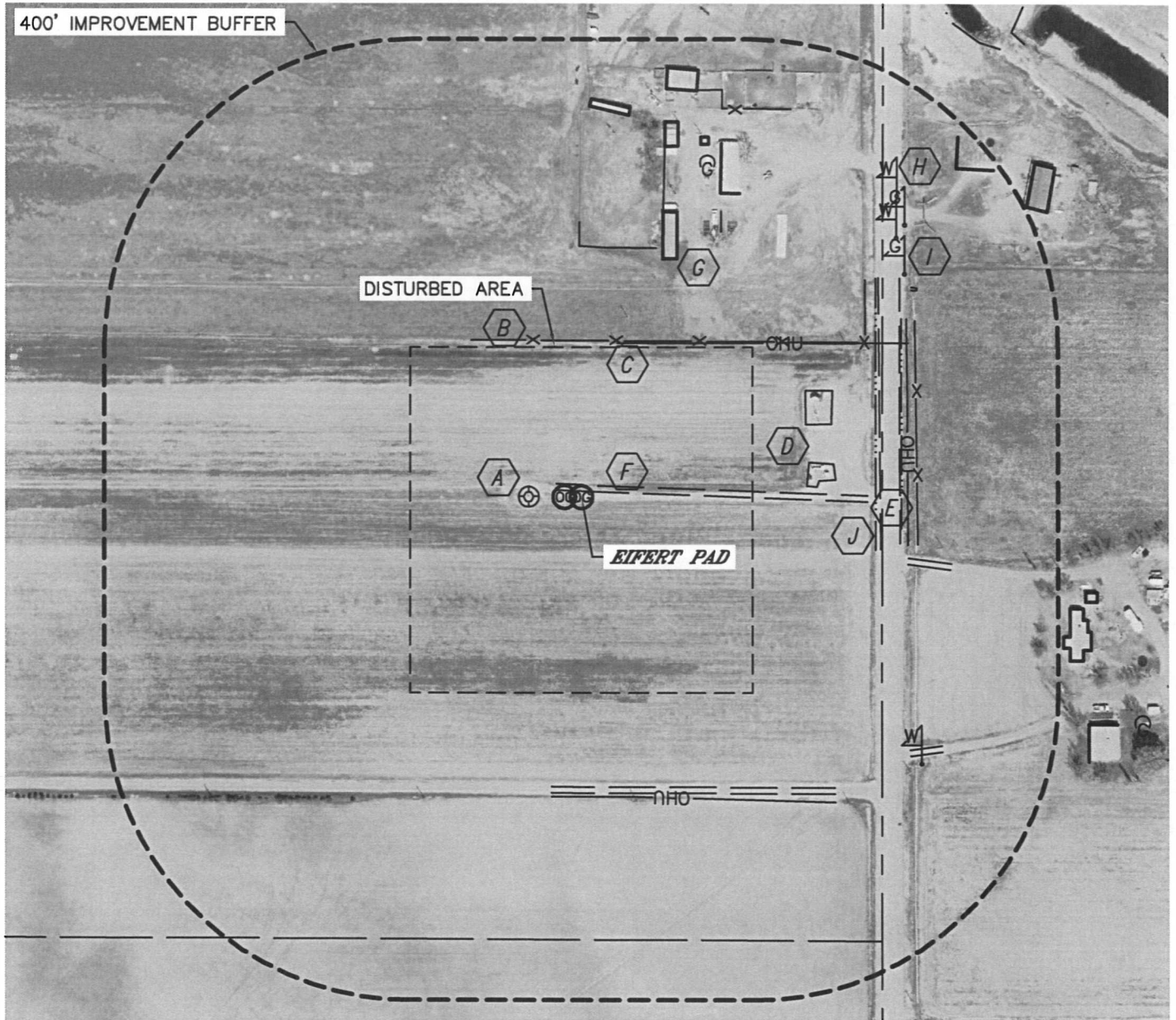


LOCATION DRAWING

EIFERT PC E11-63HN & 65HN

SECTION: 11
TOWNSHIP: 6N
RANGE: 65W



IMPROVEMENTS:
(DIMENSIONS MEASURED FROM THE EIFERT PC E11-63HN LOCATION)

- | | |
|---|---|
| <p>A EX. WELL 70' W</p> <p>B FENCE 203', 326', 386', 391' & 538' N, 441' E</p> <p>C OVERHEAD UTILITY 205' NE, 428' E, 391' S</p> <p>D EX. PRODUCTION EQUIPMENT (NOBLE) 299' & 310' NE</p> <p>E COUNTY ROAD 47 392' E</p> | <p>F FIELD ROAD 8' N, 377' S, 438' & 546' SE</p> <p>G BUILDINGS 328', 435', 471', 546', 652', 695', 501 NE
WATER WELL SHED 485' NE,</p> <p>H WATER LINE MARKER 533' & 570' NE, 565' SE</p> <p>I GAS LINE MARKER 514' & 553' NE</p> <p>J BARROW DITCH 386' & 420' E</p> |
|---|---|

NEAREST: BUILDING 328' NE, PUBLIC ROAD 392' E (CR 47),
ABOVE GROUND UTILITY 205' NE, RAILROAD 5280'+, PROPERTY LINE 204' N

