

HALLIBURTON
Sperry Drilling

Project: Weld County Colorado (NAD 83)

Site: Sec.12, T6N, R64W

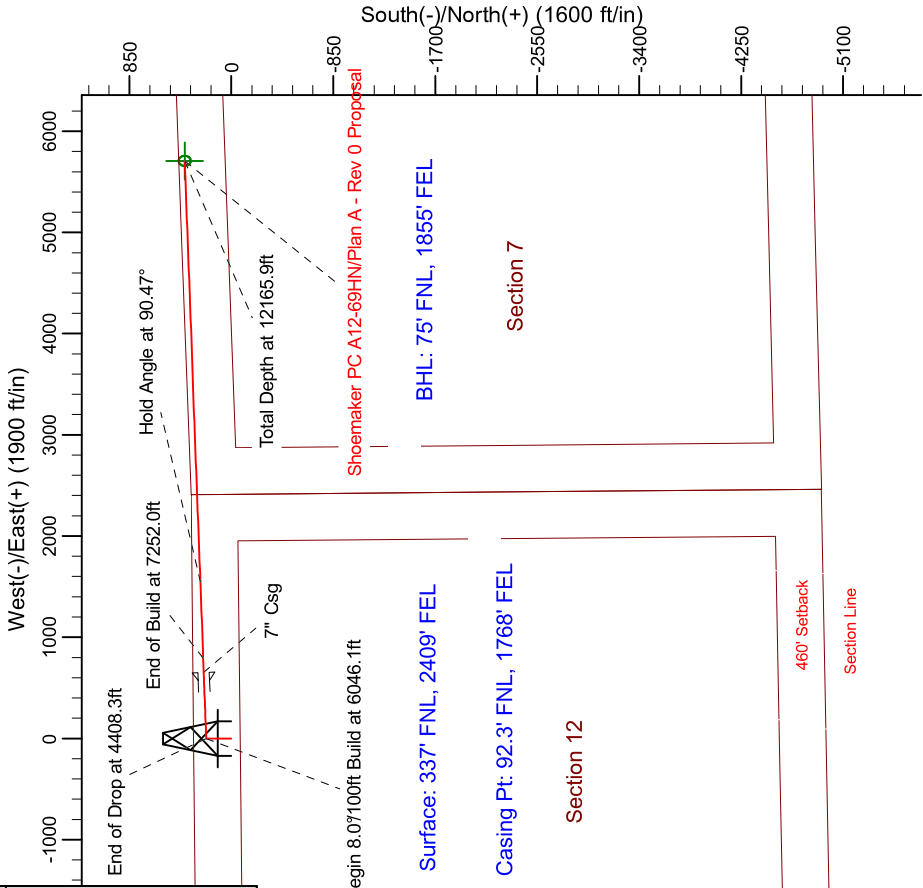
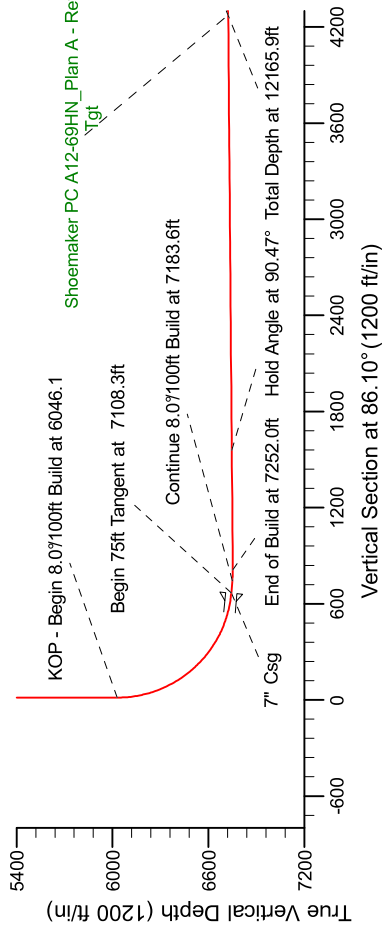
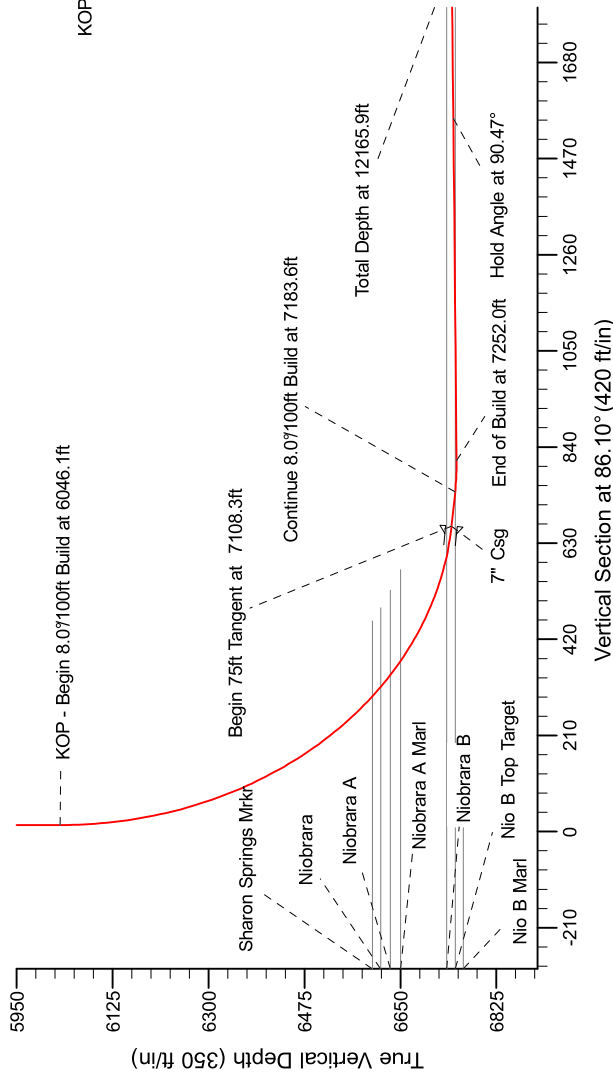
Well: Shoemaker PC A12-69HN

Wellbore: Plan A - Rev 0 (PERMITTING PLAN ONLY)

Design: Plan A - Rev 0 Proposal

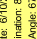
SECTION DETAILS

Sec	MD	Inc	Azi	TVD	+N/-S	+E/-W	Dleg	TFace	VSEct	Target
1	0.0	0.0	0.0	0.0	0.0	0.0	0.0	0.0	0.0	
2	2800.0	0.0	0.0	2800.0	0.0	0.0	0.0	0.0	0.0	
3	3200.0	10.0	0.0	3198.0	34.8	0.0	2.50	0.0	2.4	
4	4008.3	10.0	0.0	3994.0	175.2	0.0	0.0	0.0	11.9	
5	4408.3	0.0	0.0	4392.0	210.0	0.0	2.50	180.0	14.3	
6	6046.1	0.0	0.0	6029.8	210.0	0.0	0.0	0.0	14.3	
7	7108.6	85.0	88.20	6743.3	230.5	653.5	8.00	88.20	687.6	
8	7183.6	85.0	88.20	6749.8	232.9	728.1	0.00	0.00	742.3	
9	7252.0	90.47	88.20	6752.5	235.0	796.4	8.00	0.00	810.5	
10	12165.9	90.47	88.20	6712.1	389.5	5707.7	0.00	-53.38	5721.0	Shoemaker PC A12-69HN Plan A - Rev 0_BHL Tgt-



WELL DETAILS: Shoemaker PC A12-69HN(NAD83 Geodetic System)			
Northing 435607.80	Easting 999371.30	Ground Level: 4720.0	Latitude 40° 30' 25.596 N
			Longitude 104° 29' 50.856 W
Plan: Plan A - Rev 0 Proposal (Shoemaker PC A12-69HN/Plan A - Rev 0 (PERMITTING PLAN ONLY))			
Created By: Erasmo Mendoza		Date: 12:19, June 13 2011	

TGM



Grid North is 0.00° East of True North (Grid Converge zero)
 Magnetic North is 0.00° East of True North (Magnetic Declination zero)
 True North is 0.00° East of True North (True Converge zero)
 To convert a Magnetic Direction to a Grid Direction, subtract 0.00 degrees
 To convert a Magnetic Direction to a True Direction, Add 0.00 degrees
 To convert a Grid Direction to a True Direction, Add 0.00 degrees

Magnetic Model: GRF200510
 Date: 01/02/11
 Inclination: 0.00°
 Dry Angle: 0.10°
 Field Strength: 53239.6