

CARRIZO OIL & GAS, INC

DRIVEWAY PHOTOS FOR TIMBRO RANCH 1-41-9-59 PAD

**PAD LOCATION NE ¼ SECTION 1 T9N R59W
WELD COUNTY COLORADO**



WCR 110 WEST



WCR 110 EAST

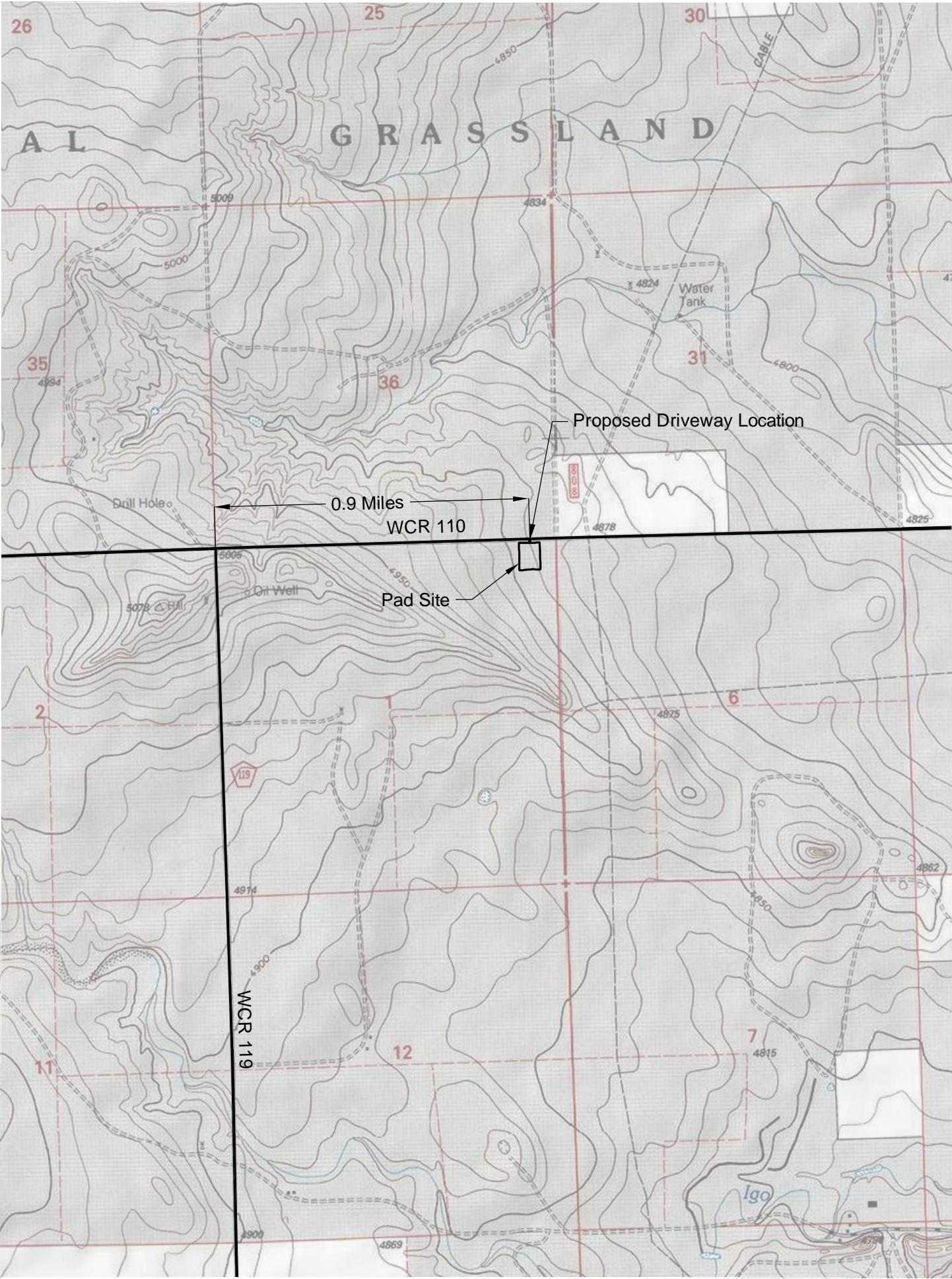


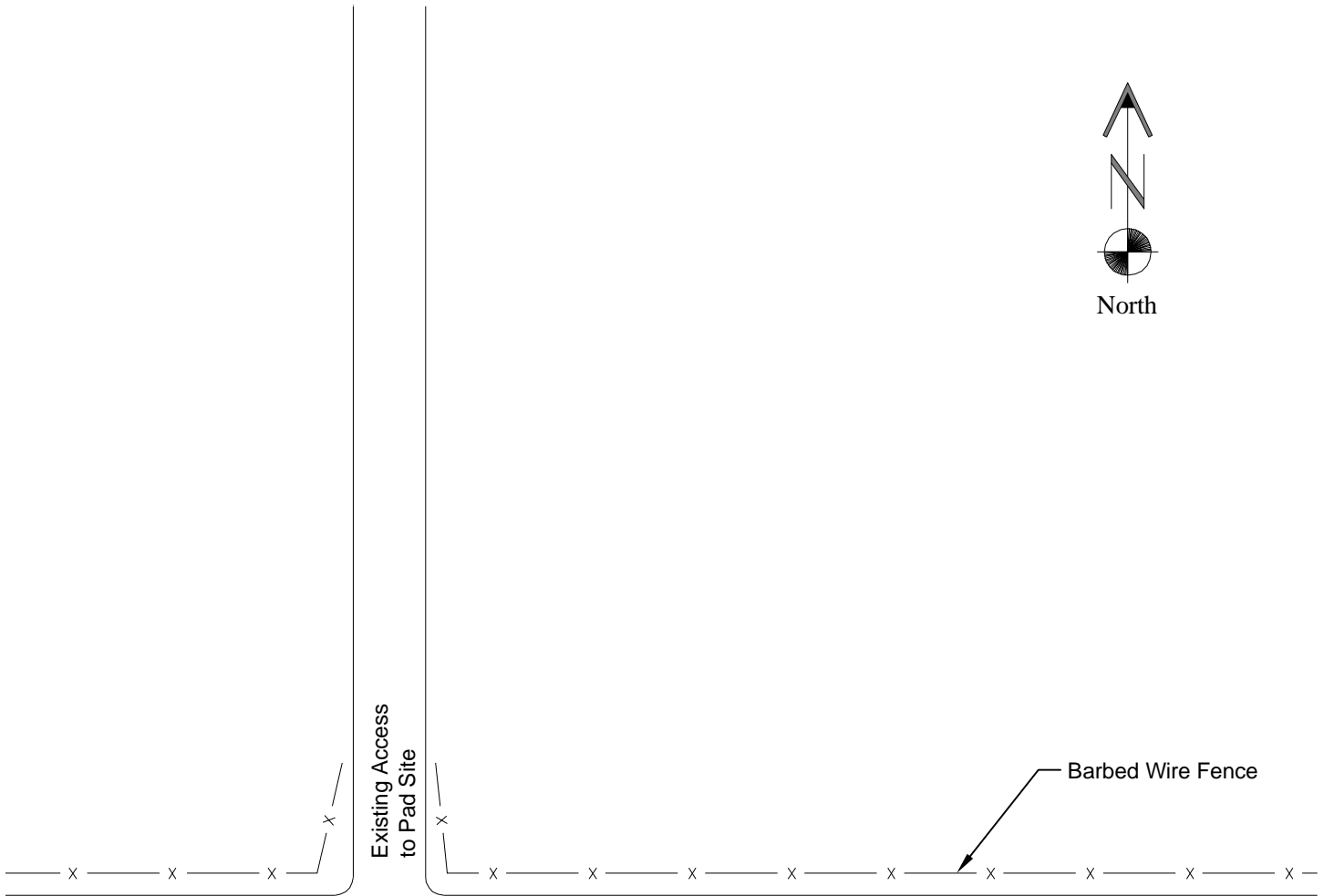
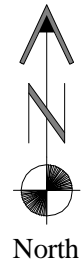
INTO ACCESS

DATE OF PICTURES 8/18/2011



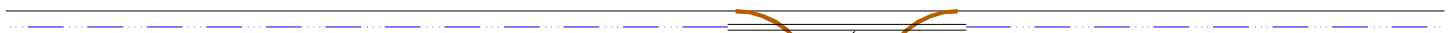
GEOSURV Inc. 520 Stacy CT Suite B Lafayette CO 80026 ph 303 666 0379 fx 303 665 6320





300'±

WCR 110
(GRAVEL SURFACE)



Install 18" CMP

Construct New Driveway

