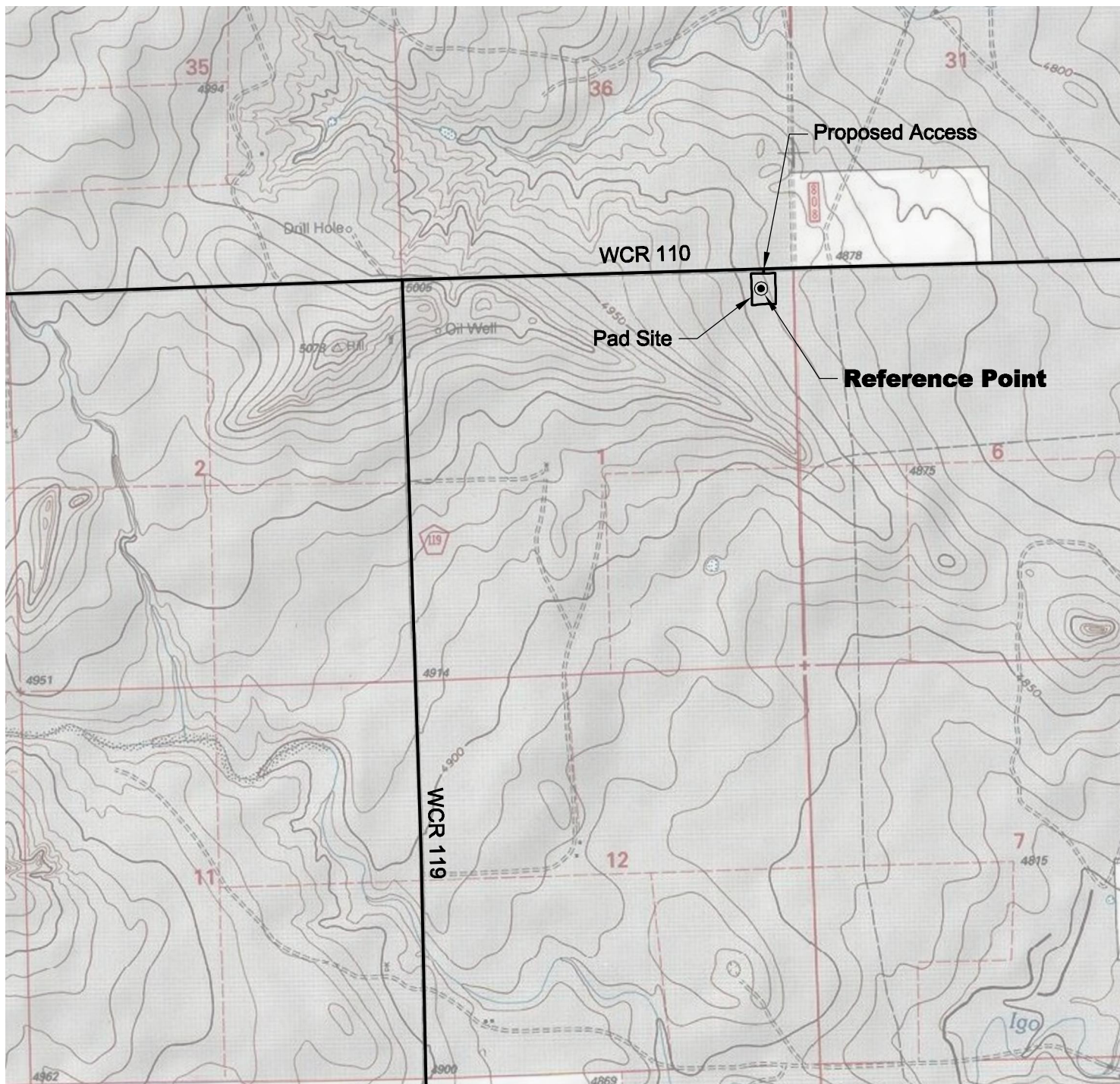


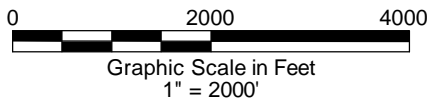
ACCESS ROAD MAP



DRIVING DIRECTIONS:

MP 0.0 - Intersection of WCR 103 & WCR 105 in Keota;
 North on WCR 105
 MP 2.9 - Right (East) on WCR 104
 MP 9.8 - Left (North) on WCR 119
 MP 12.8 - T Intersection with WCR 110; Right (East) on WCR 110
 MP 13.7 - Right on access onto Timbro Ranch 1-41-9-59 Pad

8/25/11



GEO SURV

LAND SURVEYING AND MAPPING
 LAFAYETTE - WINTER PARK
 Ph 303 666 0379 Fx 303 665 6320

CARRIZO OIL & GAS, INC
TIMBRO RANCH 1-41-9-59 PAD

LOT 1 SECTION 1 T9N R59W
6th PM WELD COUNTY COLORADO