

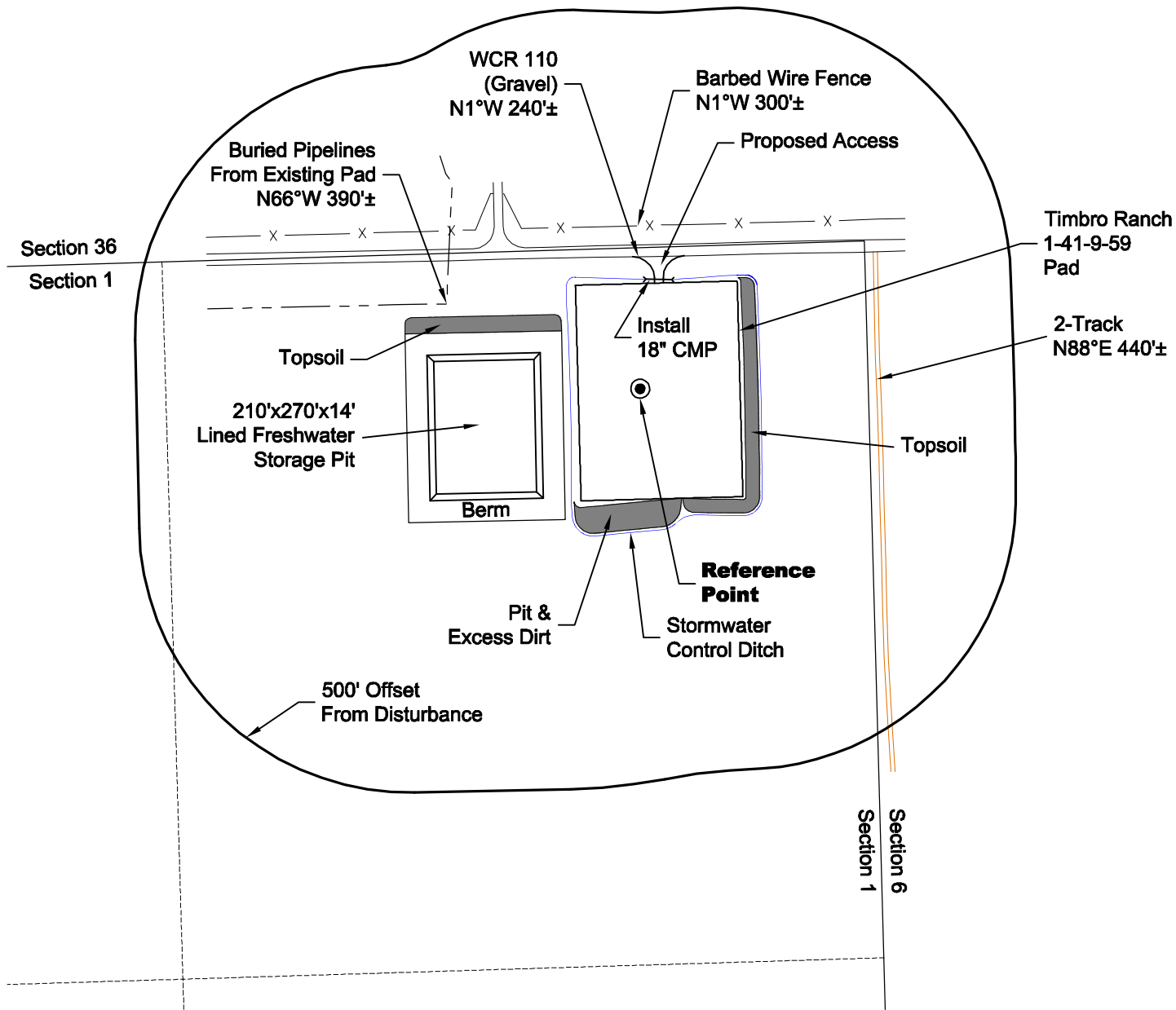
# LOCATION DRAWING

**VEGETATION:**  
GRASSLAND PASTURE

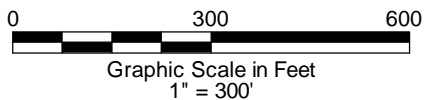
**SURFACE USE:**  
GRAZING

## REFERENCE POINT

LATITUDE:	40.78679
LONGITUDE:	-103.91885
FOOTAGE:	261 FNL 423 FEL
GROUND ELEVATION:	4893.5
PDOP:	2.0 DATE: 8/18/2011
INSTRUMENT OPERATOR: MARC WOODARD	



DWG: G:\GEO SURV\Weld\North\Carrizo 110004\Wellplates\Timbro Ranch 1-41-9-59\F2A.dwg USER: MTC DATE: Aug 25, 2011 12:55pm



**DISTURBANCE ACREAGE:**  
4.0± DRILLING OPERATIONS  
2.6± FRESHWATER STORAGE PIT  
1.0± INTERIM RECLAIM

**NOTE:**  
ALL PRODUCTION FACILITIES WILL BE ON PAD.

8/25/11

**LAND SURVEYING AND MAPPING**  
LAFAYETTE - WINTER PARK  
Ph 303 666 0379 Fx 303 665 6320

**CARRIZO OIL & GAS, INC**  
TIMBRO RANCH 1-41-9-59 PAD

---

**LOT 1 SECTION 1 T9N R59W**  
**6th PM WELD COUNTY COLORADO**