

CONSTRUCTION LAYOUT DRAWING

1 of 2

VEGETATION:
GRASSLAND PASTURE

SURFACE USE:
GRAZING

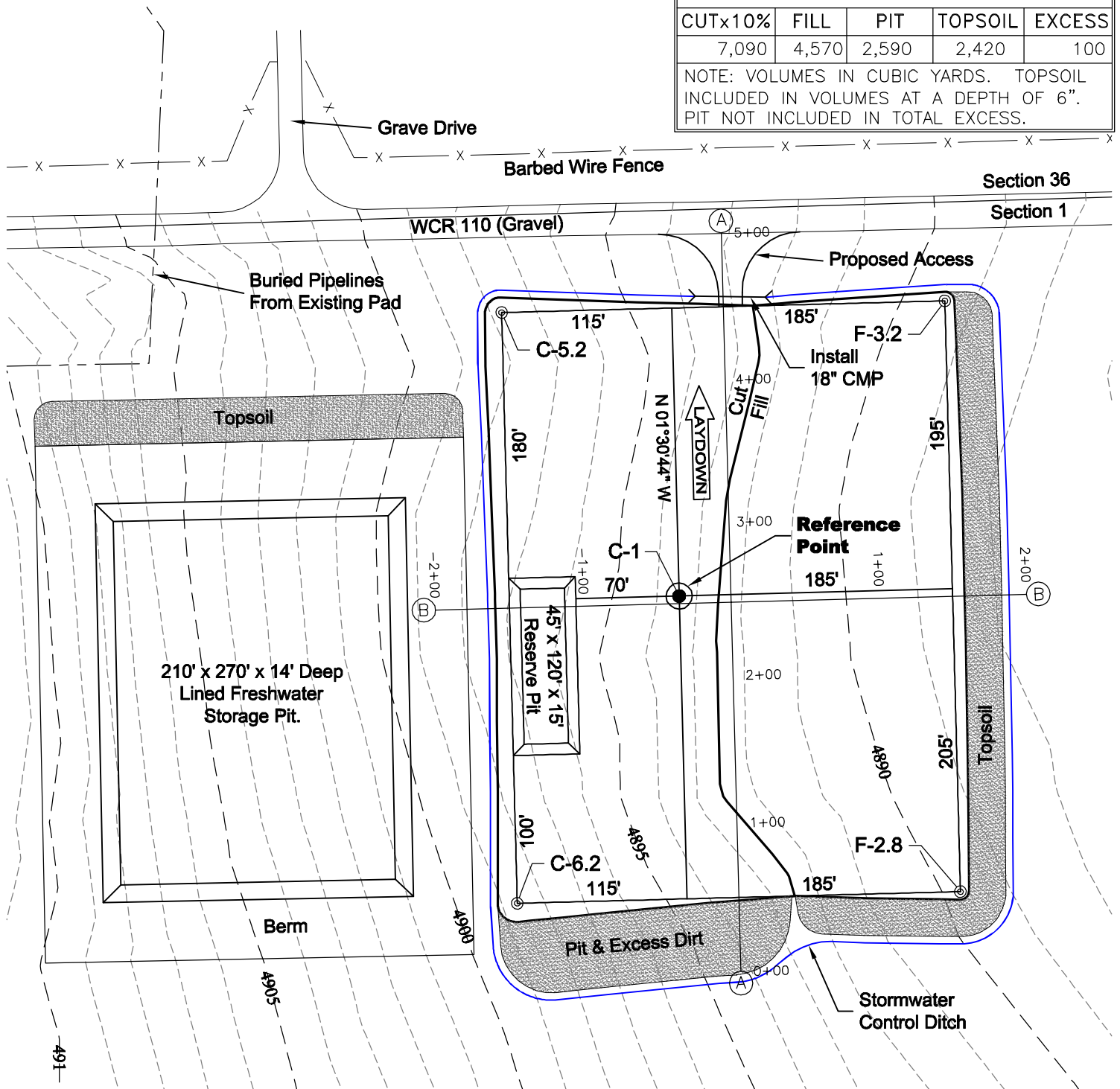
PAD 300'X400' ELEV= 4892.5

DISTURBED AREA=4.0± ACRES

ESTIMATED DIRT QUANTITIES

CUTx10%	FILL	PIT	TOPSOIL	EXCESS
7,090	4,570	2,590	2,420	100

NOTE: VOLUMES IN CUBIC YARDS. TOPSOIL INCLUDED IN VOLUMES AT A DEPTH OF 6". PIT NOT INCLUDED IN TOTAL EXCESS.



NOTE:

10% ALLOWANCE IS MADE FOR SOIL EXPANSION.

8/25/11

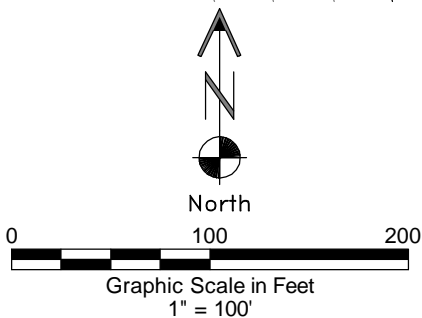
GEO SURV

LAND SURVEYING AND MAPPING
LAFAYETTE - WINTER PARK
Ph 303 666 0379 Fx 303 665 6320

CARRIZO OIL & GAS, INC
TIMBRO RANCH 1-41-9-59 PAD

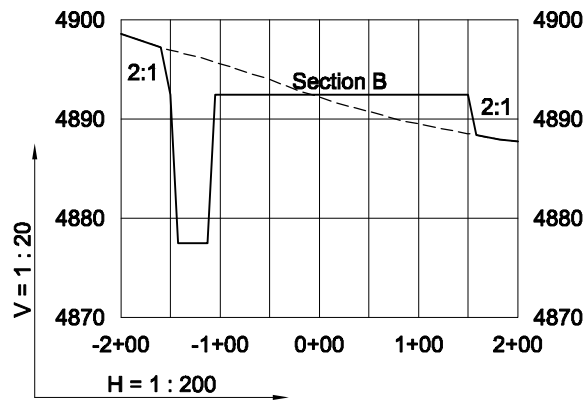
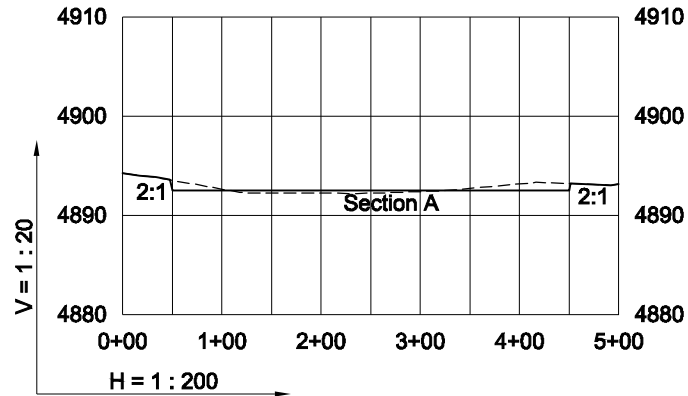
LOT 1 SECTION 1 T9N R59W
6th PM WELD COUNTY COLORADO

DWG: G:\GEO SURV\Weld\North\Corrizo 110004\Wellplate\Timbro Ranch 1-41-9-59\F2A.dwg USER: MTC DATE: Aug 25, 2011 12:57pm



CONSTRUCTION LAYOUT DRAWING

2 of 2



8/25/11

----- Existing Ground
----- Proposed Grade


LAND SURVEYING AND MAPPING
LAFAYETTE - WINTER PARK
Ph 303 666 0379 Fx 303 665 6320

CARRIZO OIL & GAS, INC
TIMBRO RANCH 1-41-9-59 PAD

LOT 1 SECTION 1 T9N R59W
6th PM WELD COUNTY COLORADO