

Bill Barrett Corp.

Garfield County, Colorado [NAD83]

GGU 14-19 Pad

GGU Daley 24D-19-691

Wellbore #1

Survey: MWD Surveys

Standard Survey Report

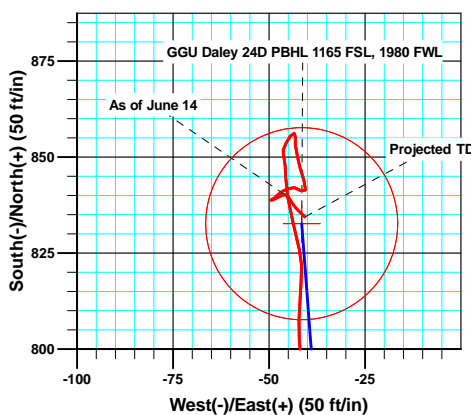
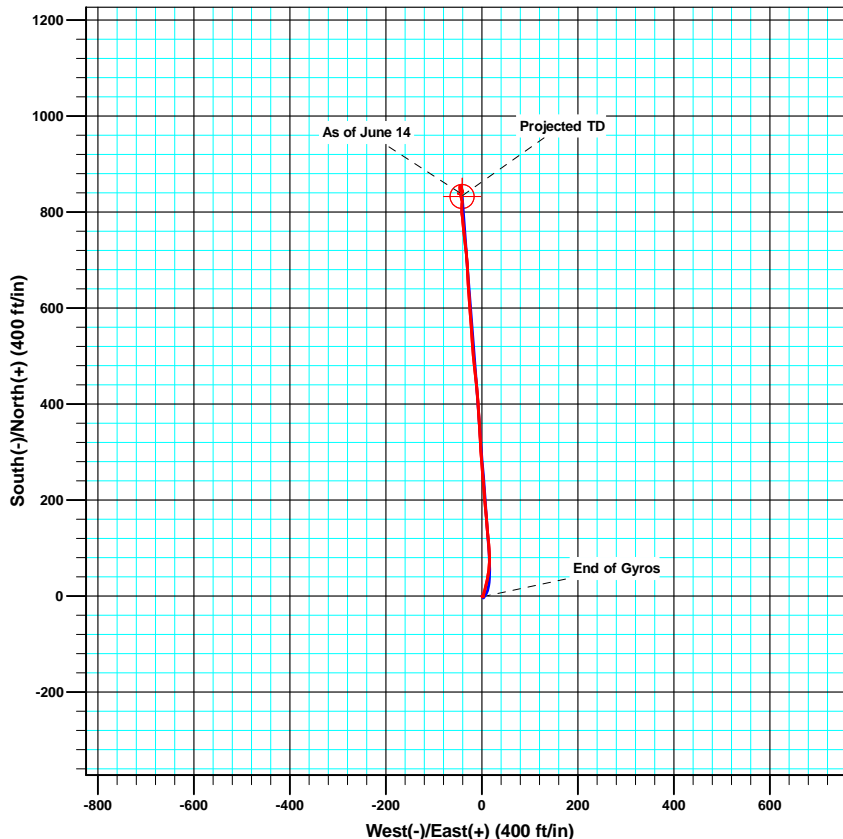
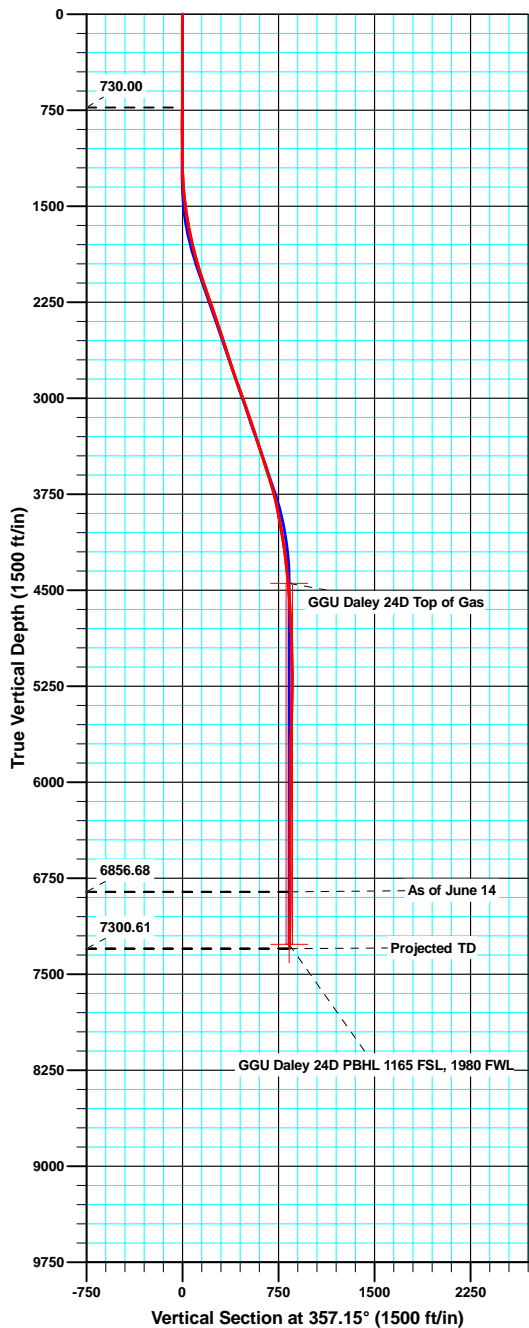
15 June, 2011

GGU Daley 24D-19-691



GGU 14-19 Pad
 +N/-S +E/-W Northing Easting Latitude Longitude
 0.00 0.00 1616271.64 2407803.62 39.506661 -107.599000

North American Datum 1983 US State Plane 1983 Colorado Central Zone



Azimuths to True North
 Magnetic North: 10.20°

Magnetic Field
 Strength: 52332.2snT
 Dip Angle: 65.83°
 Date: 3/23/2011
 Model: IGRF2010

ANNOTATIONS

TVD	MD	Inc	Azi	+N/-S	+E/-W	VSect	Departure	Annotation
6856.68	6976.00	0.60	95.00	840.26	-45.94	841.51	894.94	As of June 14
7300.61	7420.00	1.40	132.60	834.43	-40.61	835.42	903.02	Projected TD



Survey Report

Company: Bill Barrett Corp.	Local Co-ordinate Reference: Well GGU Daley 24D-19-691
Project: Garfield County, Colorado [NAD83]	TVD Reference: KB @ 5846.00ft
Site: GGU 14-19 Pad	MD Reference: KB @ 5846.00ft
Well: GGU Daley 24D-19-691	North Reference: True
Wellbore: Wellbore #1	Survey Calculation Method: Minimum Curvature
Design: Wellbore #1	Database: CompassVM

Project Garfield County, Colorado [NAD83]		
Map System: US State Plane 1983	System Datum:	Mean Sea Level
Geo Datum: North American Datum 1983		
Map Zone: Colorado Central Zone		

Site GGU 14-19 Pad					
Site Position:	Northing:	1,616,207.75 usft	Latitude:	39.506485	
From: Lat/Long	Easting:	2,407,793.69 usft	Longitude:	-107.599030	
Position Uncertainty: 0.00 ft	Slot Radius: 1.10 ft		Grid Convergence:	-1.32 °	

Well GGU Daley 24D-19-691					
Well Position	+N/-S	0.00 ft	Northing:	1,616,271.63 usft	Latitude: 39.506661
	+E/-W	0.00 ft	Easting:	2,407,803.63 usft	Longitude: -107.599000
Position Uncertainty	0.00 ft		Wellhead Elevation:	ft	Ground Level: 5,823.00 ft

Wellbore Wellbore #1					
Magnetics	Model Name	Sample Date	Declination (°)	Dip Angle (°)	Field Strength (nT)
	IGRF2010	3/23/2011	10.20	65.83	52,332

Design Wellbore #1					
Audit Notes:					
Version: 1.0	Phase: ACTUAL	Tie On Depth:	0.00		
Vertical Section:	Depth From (TVD) (ft)	+N/-S (ft)	+E/-W (ft)	Direction (°)	
	0.00	0.00	0.00	357.15	

Survey Program		Date 6/15/2011		
From (ft)	To (ft)	Survey (Wellbore)	Tool Name	Description
50.00	730.00	Gyro Surveys (Wellbore #1)	MWD	MWD - Standard
883.00	7,420.00	MWD Surveys (Wellbore #1)	MWD	MWD - Standard

Survey										
Measured Depth (ft)	Inclination (°)	Azimuth (°)	Vertical Depth (ft)	+N/-S (ft)	+E/-W (ft)	Vertical Section (ft)	Dogleg Rate (°/100ft)	Build Rate (°/100ft)	Turn Rate (°/100ft)	
730.00	0.35	160.43	730.00	-1.07	1.88	-1.16	0.00	0.00	0.00	
883.00	0.10	62.60	882.99	-1.45	2.15	-1.55	0.25	-0.16	-63.94	
975.00	0.20	24.30	974.99	-1.26	2.29	-1.37	0.15	0.11	-41.63	
1,067.00	0.30	32.20	1,066.99	-0.91	2.48	-1.03	0.11	0.11	8.59	
1,159.00	0.30	9.60	1,158.99	-0.47	2.65	-0.60	0.13	0.00	-24.57	
1,254.00	2.10	8.80	1,253.97	1.49	2.96	1.35	1.89	1.89	-0.84	
1,350.00	4.60	15.70	1,349.80	6.94	4.27	6.72	2.63	2.60	7.19	
1,445.00	6.80	13.30	1,444.32	16.08	6.59	15.73	2.33	2.32	-2.53	
1,541.00	8.60	14.40	1,539.45	28.57	9.69	28.05	1.88	1.88	1.15	
1,636.00	10.60	9.00	1,633.12	44.08	12.82	43.38	2.31	2.11	-5.68	

Survey Report

Company:	Bill Barrett Corp.	Local Co-ordinate Reference:	Well GGU Daley 24D-19-691
Project:	Garfield County, Colorado [NAD83]	TVD Reference:	KB @ 5846.00ft
Site:	GGU 14-19 Pad	MD Reference:	KB @ 5846.00ft
Well:	GGU Daley 24D-19-691	North Reference:	True
Wellbore:	Wellbore #1	Survey Calculation Method:	Minimum Curvature
Design:	Wellbore #1	Database:	CompassVM

Survey										
Measured Depth (ft)	Inclination (°)	Azimuth (°)	Vertical Depth (ft)	+N/-S (ft)	+E/-W (ft)	Vertical Section (ft)	Dogleg Rate (°/100ft)	Build Rate (°/100ft)	Turn Rate (°/100ft)	
1,732.00	12.00	4.10	1,727.26	62.75	14.92	61.93	1.77	1.46	-5.10	
1,827.00	12.90	0.20	1,820.02	83.21	15.66	82.33	1.30	0.95	-4.11	
1,922.00	15.40	353.80	1,912.14	106.36	14.33	105.51	3.10	2.63	-6.74	
2,018.00	17.40	354.10	2,004.23	133.31	11.48	132.58	2.09	2.08	0.31	
2,113.00	19.00	355.90	2,094.47	162.87	8.92	162.22	1.78	1.68	1.89	
2,209.00	19.40	355.20	2,185.13	194.34	6.46	193.78	0.48	0.42	-0.73	
2,304.00	18.50	354.50	2,274.98	225.07	3.70	224.61	0.98	-0.95	-0.74	
2,400.00	18.90	355.90	2,365.92	255.74	1.13	255.37	0.63	0.42	1.46	
2,496.00	19.30	355.00	2,456.63	287.05	-1.37	286.76	0.52	0.42	-0.94	
2,591.00	17.80	357.00	2,546.70	317.19	-3.50	316.97	1.71	-1.58	2.11	
2,686.00	17.90	357.40	2,637.12	346.28	-4.92	346.09	0.17	0.11	0.42	
2,781.00	17.80	356.00	2,727.55	375.35	-6.59	375.21	0.46	-0.11	-1.47	
2,876.00	18.90	356.00	2,817.72	405.18	-8.68	405.11	1.16	1.16	0.00	
2,972.00	20.10	354.80	2,908.21	437.12	-11.26	437.14	1.32	1.25	-1.25	
3,067.00	20.10	352.80	2,997.42	469.57	-14.78	469.73	0.72	0.00	-2.11	
3,163.00	19.30	355.30	3,087.81	501.75	-18.15	502.03	1.21	-0.83	2.60	
3,258.00	19.10	356.60	3,177.52	532.91	-20.36	533.27	0.50	-0.21	1.37	
3,354.00	18.10	355.80	3,268.51	563.47	-22.38	563.88	1.08	-1.04	-0.83	
3,449.00	18.40	355.20	3,358.73	593.12	-24.72	593.62	0.37	0.32	-0.63	
3,544.00	16.70	355.80	3,449.30	621.68	-26.97	622.25	1.80	-1.79	0.63	
3,640.00	18.00	356.80	3,540.93	650.25	-28.81	650.88	1.39	1.35	1.04	
3,735.00	17.40	357.70	3,631.44	679.10	-30.20	679.76	0.69	-0.63	0.95	
3,830.00	16.00	354.70	3,722.43	706.33	-31.98	707.04	1.73	-1.47	-3.16	
3,926.00	12.70	352.80	3,815.42	729.98	-34.53	730.79	3.47	-3.44	-1.98	
4,021.00	10.30	353.50	3,908.51	748.78	-36.80	749.68	2.53	-2.53	0.74	
4,116.00	10.10	354.40	4,002.01	765.51	-38.57	766.48	0.27	-0.21	0.95	
4,212.00	9.80	354.70	4,096.56	782.02	-40.15	783.05	0.32	-0.31	0.31	
4,307.00	7.60	353.60	4,190.46	796.32	-41.59	797.40	2.32	-2.32	-1.16	
4,402.00	6.10	1.10	4,284.78	807.61	-42.20	808.71	1.84	-1.58	7.89	
4,498.00	5.70	5.70	4,380.28	817.45	-41.63	818.51	0.64	-0.42	4.79	
4,593.00	4.70	346.50	4,474.89	825.93	-42.07	827.00	2.10	-1.05	-20.21	
4,689.00	4.10	346.80	4,570.61	833.10	-43.77	834.24	0.63	-0.63	0.31	
4,784.00	3.80	350.40	4,665.38	839.51	-45.07	840.71	0.41	-0.32	3.79	
4,879.00	3.10	358.70	4,760.21	845.18	-45.65	846.40	0.90	-0.74	8.74	
4,974.00	2.00	348.60	4,855.12	849.37	-46.04	850.61	1.25	-1.16	-10.63	
5,069.00	1.10	6.70	4,950.08	851.90	-46.26	853.15	1.07	-0.95	19.05	
5,165.00	1.30	34.00	5,046.06	853.72	-45.54	854.93	0.62	0.21	28.44	
5,260.00	1.30	32.50	5,141.04	855.52	-44.36	856.67	0.04	0.00	-1.58	
5,355.00	0.50	116.60	5,236.03	856.25	-43.41	857.35	1.41	-0.84	88.53	
5,451.00	1.00	186.70	5,332.02	855.23	-43.13	856.31	0.99	0.52	73.02	
5,546.00	1.50	175.00	5,427.00	853.16	-43.12	854.25	0.59	0.53	-12.32	
5,641.00	1.80	165.70	5,521.96	850.48	-42.65	851.55	0.42	0.32	-9.79	
5,737.00	1.90	168.80	5,617.91	847.46	-41.96	848.50	0.15	0.10	3.23	

Survey Report

Company:	Bill Barrett Corp.	Local Co-ordinate Reference:	Well GGU Daley 24D-19-691
Project:	Garfield County, Colorado [NAD83]	TVD Reference:	KB @ 5846.00ft
Site:	GGU 14-19 Pad	MD Reference:	KB @ 5846.00ft
Well:	GGU Daley 24D-19-691	North Reference:	True
Wellbore:	Wellbore #1	Survey Calculation Method:	Minimum Curvature
Design:	Wellbore #1	Database:	CompassVM

Survey										
Measured Depth (ft)	Inclination (°)	Azimuth (°)	Vertical Depth (ft)	+N/-S (ft)	+E/-W (ft)	Vertical Section (ft)	Dogleg Rate (°/100ft)	Build Rate (°/100ft)	Turn Rate (°/100ft)	
5,832.00	2.40	158.50	5,712.84	844.06	-40.93	845.05	0.66	0.53	-10.84	
5,927.00	1.00	200.60	5,807.80	841.44	-40.49	842.41	1.88	-1.47	44.32	
6,022.00	1.30	306.40	5,902.79	841.30	-41.65	842.33	1.94	0.32	111.37	
6,118.00	1.00	279.90	5,998.77	842.09	-43.35	843.20	0.63	-0.31	-27.60	
6,213.00	1.10	242.50	6,093.75	841.81	-44.98	843.01	0.72	0.11	-39.37	
6,309.00	1.10	246.20	6,189.74	841.01	-46.64	842.29	0.07	0.00	3.85	
6,404.00	0.80	213.90	6,284.72	840.09	-47.84	841.43	0.63	-0.32	-34.00	
6,499.00	0.60	241.00	6,379.72	839.30	-48.65	840.68	0.40	-0.21	28.53	
6,595.00	0.30	238.80	6,475.71	838.93	-49.30	840.34	0.31	-0.31	-2.29	
6,690.00	0.10	100.10	6,570.71	838.79	-49.43	840.21	0.40	-0.21	-146.00	
6,786.00	0.90	70.60	6,666.71	839.02	-48.64	840.40	0.85	0.83	-30.73	
6,881.00	1.10	55.30	6,761.69	839.79	-47.19	841.10	0.35	0.21	-16.11	
6,976.00	0.60	95.00	6,856.68	840.26	-45.94	841.51	0.78	-0.53	41.79	
As of June 14										
7,072.00	0.90	143.30	6,952.68	839.62	-44.99	840.81	0.70	0.31	50.31	
7,167.00	1.00	147.70	7,047.66	838.32	-44.10	839.47	0.13	0.11	4.63	
7,263.00	1.10	141.50	7,143.65	836.89	-43.08	837.99	0.16	0.10	-6.46	
7,358.00	1.30	132.60	7,238.63	835.44	-41.72	836.49	0.29	0.21	-9.37	
7,373.00	1.40	132.60	7,253.62	835.21	-41.46	836.23	0.67	0.67	0.00	
7,420.00	1.40	132.60	7,300.61	834.43	-40.61	835.42	0.00	0.00	0.00	
Projected TD										

Survey Annotations				
Measured Depth (ft)	Vertical Depth (ft)	Local Coordinates		Comment
		+N/-S (ft)	+E/-W (ft)	
6,976.00	6,856.68	840.26	-45.94	As of June 14
7,420.00	7,300.61	834.43	-40.61	Projected TD

Checked By: _____ Approved By: _____ Date: _____