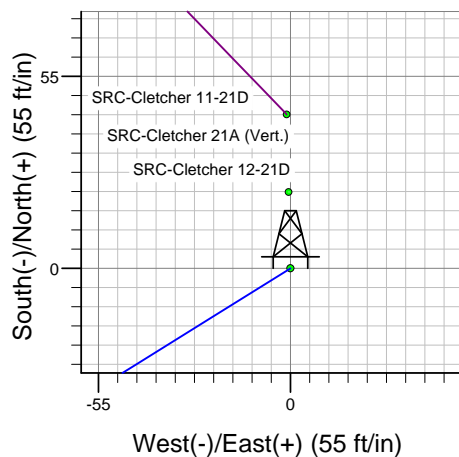
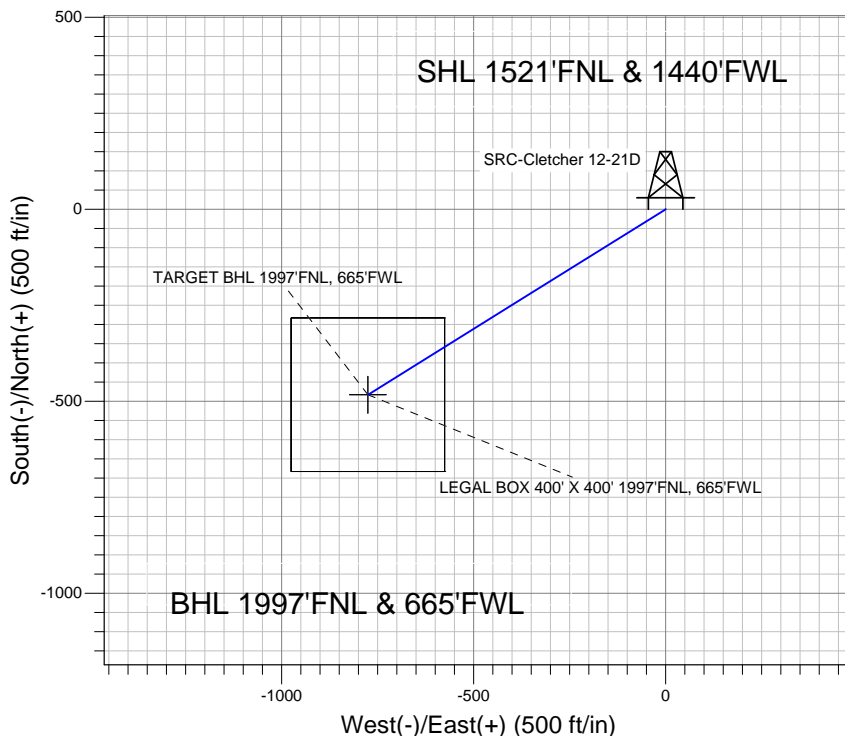
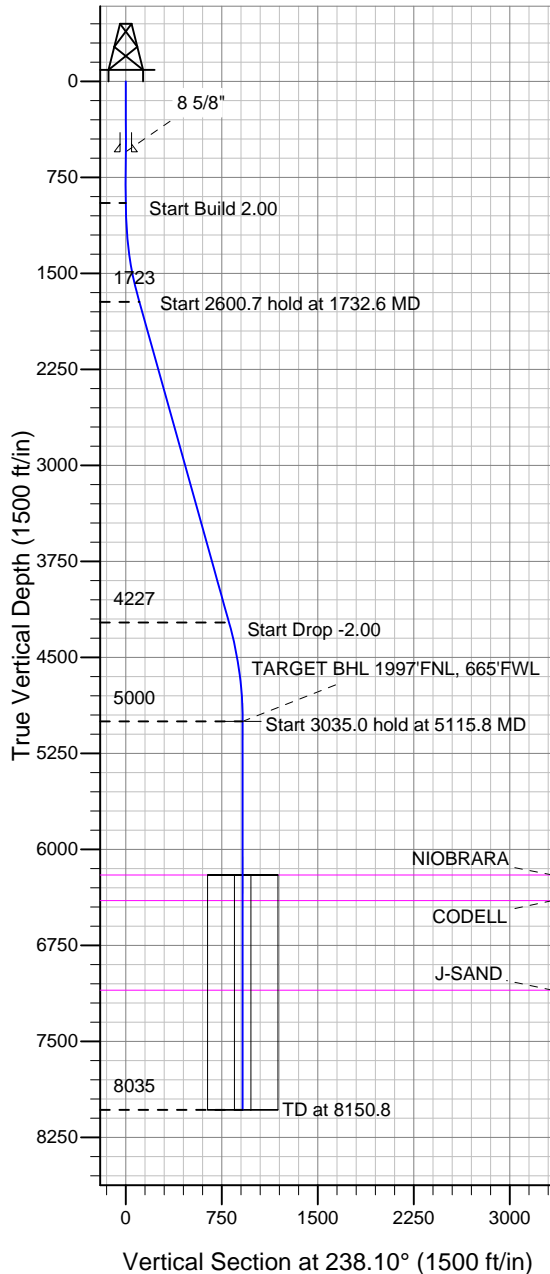


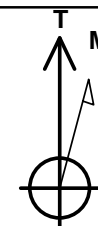
### Well Name: SRC-Cletcher 12-21D

Surface Location: SRC-Cletcher Pad Sec.21-T4N-R68W  
 North American Datum 1983, US State Plane 1983 Colorado Northern Zone  
 Ground Elevation: 4936.0  
 +N/-S 0.0 +E/-W 0.0 Northing 1353187.61 Easting 3135921.10 Latitude 40.301875 Longitude -105.012674  
 Original Well EleWELL @ 4949.0ft (Original Well Elev)

### Synergy Resources



SRC-Cletcher Pad Sec.21-T4N-R68W  
 SRC-Cletcher 12-21D  
 SRC-Cletcher 12-21D Plan #2 (8-29-11)  
 15:11, August 29 2011



Azimuths to True North  
 Magnetic North: 8.92°  
 Magnetic Field  
 Strength: 53054.0snT  
 Dip Angle: 66.93°  
 Date: 8/29/2011  
 Model: IGRF200510

#### WELLBORE TARGET DETAILS (LAT/LONG)

Name	TVD	+N/-S	+E/-W	Latitude	Longitude	Shape
TARGET BHL 1997'FNL, 665'FWL	5000.0	-483.0	-776.0	40.300549	-105.015456	Point
LEGAL BOX 400' X 400' 1997'FNL, 665'FWL	6200.0	-483.0	-776.0	40.300549	-105.015456	Rectangle (Sides: L400.0 W400.0)

#### SECTION DETAILS

Sec	MD	Inc	Azi	TVD	+N/-S	+E/-W	DLeg	TFace	VSec	Target
1	0.0	0.00	0.00	0.0	0.0	0.0	0.00	0.00	0.0	
2	950.0	0.00	0.00	950.0	0.0	0.0	0.00	0.00	0.0	
3	1732.6	15.65	238.10	1722.9	-56.1	-90.2	2.00	238.10	106.2	
4	4333.3	15.65	238.10	4227.1	-426.9	-685.8	0.00	0.00	807.8	
5	5115.8	0.00	0.00	5000.0	-483.0	-776.0	2.00	180.00	914.1	TARGET BHL 1997'FNL, 665'FWL
6	8150.8	0.00	0.00	8035.0	-483.0	-776.0	0.00	0.00	914.1	



## **Directional**

### **Synergy Resources**

**SEC.21-T4N-R68W**

**SRC-Cletcher Pad Sec.21-T4N-R68W**

**SRC-Cletcher 12-21D**

**SRC-Cletcher 12-21D**

**Plan: SRC-Cletcher 12-21D Plan #2 (8-29-11)**

### **Standard Planning Report**

**29 August, 2011**

<b>Database:</b>	Landmark	<b>Local Co-ordinate Reference:</b>	Well SRC-Cletcher 12-21D
<b>Company:</b>	Synergy Resources	<b>TVD Reference:</b>	WELL @ 4949.0ft (Original Well Elev)
<b>Project:</b>	SEC.21-T4N-R68W	<b>MD Reference:</b>	WELL @ 4949.0ft (Original Well Elev)
<b>Site:</b>	SRC-Cletcher Pad Sec.21-T4N-R68W	<b>North Reference:</b>	True
<b>Well:</b>	SRC-Cletcher 12-21D	<b>Survey Calculation Method:</b>	Minimum Curvature
<b>Wellbore:</b>	SRC-Cletcher 12-21D		
<b>Design:</b>	SRC-Cletcher 12-21D Plan #2 (8-29-11)		

<b>Project</b>	SEC.21-T4N-R68W, Weld County, Colorado		
<b>Map System:</b>	US State Plane 1983	<b>System Datum:</b>	Mean Sea Level
<b>Geo Datum:</b>	North American Datum 1983		Using Well Reference Point
<b>Map Zone:</b>	Colorado Northern Zone		Using geodetic scale factor

Site										SRC-Cletcher Pad Sec.21-T4N-R68W																			
<b>Site Position:</b>					<b>Northing:</b>					1,353,199.58 ft					<b>Latitude:</b>					40.301909									
<b>From:</b>					Lat/Long					<b>Easting:</b>					3,135,844.89 ft					<b>Longitude:</b>					-105.012947				
<b>Position Uncertainty:</b>					0.0 ft					<b>Slot Radius:</b>					"					<b>Grid Convergence:</b>					0.31 °				

Well	SRC-Cletcher 12-21D					
Well Position	+N-S	-12.4 ft	Northing:	1,353,187.61 ft	Latitude:	40.301875
	+E-W	76.1 ft	Easting:	3,135,921.10 ft	Longitude:	-105.012674
Position Uncertainty		0.0 ft	Wellhead Elevation:	ft	Ground Level:	4,936.0 ft

Wellbore	SRC-Cletcher 12-21D				
Magnetics	Model Name	Sample Date	Declination (°)	Dip Angle (°)	Field Strength (nT)
	IGRF200510	8/29/2011	8.92	66.93	53,054

Design	SRC-Cletcher 12-21D Plan #2 (8-29-11)			
Audit Notes:				
Version:	Phase:	PROTOTYPE	Tie On Depth:	0.0
Vertical Section:	Depth From (TVD) (ft)	+N/-S (ft)	+E/-W (ft)	Direction (°)
	0.0	0.0	0.0	238.10

Plan Sections										
Measured Depth (ft)	Inclination (°)	Azimuth (°)	Vertical Depth (ft)	+N/-S (ft)	+E/-W (ft)	Dogleg Rate (°/100ft)	Build Rate (°/100ft)	Turn Rate (°/100ft)	TFO (°)	Target
0.0	0.00	0.00	0.0	0.0	0.0	0.00	0.00	0.00	0.00	
950.0	0.00	0.00	950.0	0.0	0.0	0.00	0.00	0.00	0.00	
1,732.6	15.65	238.10	1,722.9	-56.1	-90.2	2.00	2.00	0.00	238.10	
4,333.3	15.65	238.10	4,227.1	-426.9	-685.8	0.00	0.00	0.00	0.00	
5,115.8	0.00	0.00	5,000.0	-483.0	-776.0	2.00	-2.00	0.00	180.00	TARGET BHL 1997
8,150.8	0.00	0.00	8,035.0	-483.0	-776.0	0.00	0.00	0.00	0.00	

**Database:** Landmark  
**Company:** Synergy Resources  
**Project:** SEC.21-T4N-R68W  
**Site:** SRC-Cletcher Pad Sec.21-T4N-R68W  
**Well:** SRC-Cletcher 12-21D  
**Wellbore:** SRC-Cletcher 12-21D  
**Design:** SRC-Cletcher 12-21D Plan #2 (8-29-11)

**Local Co-ordinate Reference:** Well SRC-Cletcher 12-21D  
**TVD Reference:** WELL @ 4949.0ft (Original Well Elev)  
**MD Reference:** WELL @ 4949.0ft (Original Well Elev)  
**North Reference:** True  
**Survey Calculation Method:** Minimum Curvature

#### Planned Survey

Measured Depth (ft)	Inclination (°)	Azimuth (°)	Vertical Depth (ft)	+N/-S (ft)	+E/-W (ft)	Vertical Section (ft)	Dogleg Rate (°/100ft)	Build Rate (°/100ft)	Turn Rate (°/100ft)
0.0	0.00	0.00	0.0	0.0	0.0	0.0	0.00	0.00	0.00
40.0	0.00	0.00	40.0	0.0	0.0	0.0	0.00	0.00	0.00
80.0	0.00	0.00	80.0	0.0	0.0	0.0	0.00	0.00	0.00
120.0	0.00	0.00	120.0	0.0	0.0	0.0	0.00	0.00	0.00
160.0	0.00	0.00	160.0	0.0	0.0	0.0	0.00	0.00	0.00
200.0	0.00	0.00	200.0	0.0	0.0	0.0	0.00	0.00	0.00
240.0	0.00	0.00	240.0	0.0	0.0	0.0	0.00	0.00	0.00
280.0	0.00	0.00	280.0	0.0	0.0	0.0	0.00	0.00	0.00
320.0	0.00	0.00	320.0	0.0	0.0	0.0	0.00	0.00	0.00
360.0	0.00	0.00	360.0	0.0	0.0	0.0	0.00	0.00	0.00
400.0	0.00	0.00	400.0	0.0	0.0	0.0	0.00	0.00	0.00
440.0	0.00	0.00	440.0	0.0	0.0	0.0	0.00	0.00	0.00
480.0	0.00	0.00	480.0	0.0	0.0	0.0	0.00	0.00	0.00
520.0	0.00	0.00	520.0	0.0	0.0	0.0	0.00	0.00	0.00
550.0	0.00	0.00	550.0	0.0	0.0	0.0	0.00	0.00	0.00
8 5/8"									
560.0	0.00	0.00	560.0	0.0	0.0	0.0	0.00	0.00	0.00
600.0	0.00	0.00	600.0	0.0	0.0	0.0	0.00	0.00	0.00
640.0	0.00	0.00	640.0	0.0	0.0	0.0	0.00	0.00	0.00
680.0	0.00	0.00	680.0	0.0	0.0	0.0	0.00	0.00	0.00
720.0	0.00	0.00	720.0	0.0	0.0	0.0	0.00	0.00	0.00
760.0	0.00	0.00	760.0	0.0	0.0	0.0	0.00	0.00	0.00
800.0	0.00	0.00	800.0	0.0	0.0	0.0	0.00	0.00	0.00
840.0	0.00	0.00	840.0	0.0	0.0	0.0	0.00	0.00	0.00
880.0	0.00	0.00	880.0	0.0	0.0	0.0	0.00	0.00	0.00
920.0	0.00	0.00	920.0	0.0	0.0	0.0	0.00	0.00	0.00
950.0	0.00	0.00	950.0	0.0	0.0	0.0	0.00	0.00	0.00
960.0	0.20	238.10	960.0	0.0	0.0	0.0	2.00	2.00	0.00
1,000.0	1.00	238.10	1,000.0	-0.2	-0.4	0.4	2.00	2.00	0.00
1,040.0	1.80	238.10	1,040.0	-0.7	-1.2	1.4	2.00	2.00	0.00
1,080.0	2.60	238.10	1,080.0	-1.6	-2.5	2.9	2.00	2.00	0.00
1,120.0	3.40	238.10	1,119.9	-2.7	-4.3	5.0	2.00	2.00	0.00
1,160.0	4.20	238.10	1,159.8	-4.1	-6.5	7.7	2.00	2.00	0.00
1,200.0	5.00	238.10	1,199.7	-5.8	-9.3	10.9	2.00	2.00	0.00
1,240.0	5.80	238.10	1,239.5	-7.8	-12.5	14.7	2.00	2.00	0.00
1,280.0	6.60	238.10	1,279.3	-10.0	-16.1	19.0	2.00	2.00	0.00
1,320.0	7.40	238.10	1,319.0	-12.6	-20.3	23.9	2.00	2.00	0.00
1,360.0	8.20	238.10	1,358.6	-15.5	-24.9	29.3	2.00	2.00	0.00
1,400.0	9.00	238.10	1,398.2	-18.6	-29.9	35.3	2.00	2.00	0.00
1,440.0	9.80	238.10	1,437.6	-22.1	-35.5	41.8	2.00	2.00	0.00
1,480.0	10.60	238.10	1,477.0	-25.8	-41.5	48.9	2.00	2.00	0.00
1,520.0	11.40	238.10	1,516.2	-29.9	-48.0	56.5	2.00	2.00	0.00
1,560.0	12.20	238.10	1,555.4	-34.2	-54.9	64.7	2.00	2.00	0.00
1,600.0	13.00	238.10	1,594.4	-38.8	-62.3	73.4	2.00	2.00	0.00
1,640.0	13.80	238.10	1,633.3	-43.7	-70.2	82.7	2.00	2.00	0.00
1,680.0	14.60	238.10	1,672.1	-48.9	-78.5	92.5	2.00	2.00	0.00
1,720.0	15.40	238.10	1,710.8	-54.4	-87.3	102.9	2.00	2.00	0.00
1,732.6	15.65	238.10	1,722.9	-56.1	-90.2	106.2	2.00	2.00	0.00
1,760.0	15.65	238.10	1,749.3	-60.0	-96.5	113.6	0.00	0.00	0.00
1,800.0	15.65	238.10	1,787.8	-65.7	-105.6	124.4	0.00	0.00	0.00
1,840.0	15.65	238.10	1,826.3	-71.5	-114.8	135.2	0.00	0.00	0.00
1,880.0	15.65	238.10	1,864.8	-77.2	-123.9	146.0	0.00	0.00	0.00
1,920.0	15.65	238.10	1,903.4	-82.9	-133.1	156.8	0.00	0.00	0.00
1,960.0	15.65	238.10	1,941.9	-88.6	-142.3	167.6	0.00	0.00	0.00

**Database:** Landmark  
**Company:** Synergy Resources  
**Project:** SEC.21-T4N-R68W  
**Site:** SRC-Cletcher Pad Sec.21-T4N-R68W  
**Well:** SRC-Cletcher 12-21D  
**Wellbore:** SRC-Cletcher 12-21D  
**Design:** SRC-Cletcher 12-21D Plan #2 (8-29-11)

**Local Co-ordinate Reference:** Well SRC-Cletcher 12-21D  
**TVD Reference:** WELL @ 4949.0ft (Original Well Elev)  
**MD Reference:** WELL @ 4949.0ft (Original Well Elev)  
**North Reference:** True  
**Survey Calculation Method:** Minimum Curvature

Planned Survey										
Measured Depth (ft)	Inclination (°)	Azimuth (°)	Vertical Depth (ft)	+N/-S (ft)	+E/-W (ft)	Vertical Section (ft)	Dogleg Rate (°/100ft)	Build Rate (°/100ft)	Turn Rate (°/100ft)	
2,000.0	15.65	238.10	1,980.4	-94.3	-151.4	178.4	0.00	0.00	0.00	
2,040.0	15.65	238.10	2,018.9	-100.0	-160.6	189.2	0.00	0.00	0.00	
2,080.0	15.65	238.10	2,057.4	-105.7	-169.8	200.0	0.00	0.00	0.00	
2,120.0	15.65	238.10	2,095.9	-111.4	-178.9	210.7	0.00	0.00	0.00	
2,160.0	15.65	238.10	2,134.5	-117.1	-188.1	221.5	0.00	0.00	0.00	
2,200.0	15.65	238.10	2,173.0	-122.8	-197.2	232.3	0.00	0.00	0.00	
2,240.0	15.65	238.10	2,211.5	-128.5	-206.4	243.1	0.00	0.00	0.00	
2,280.0	15.65	238.10	2,250.0	-134.2	-215.6	253.9	0.00	0.00	0.00	
2,320.0	15.65	238.10	2,288.5	-139.9	-224.7	264.7	0.00	0.00	0.00	
2,360.0	15.65	238.10	2,327.0	-145.6	-233.9	275.5	0.00	0.00	0.00	
2,400.0	15.65	238.10	2,365.6	-151.3	-243.0	286.3	0.00	0.00	0.00	
2,440.0	15.65	238.10	2,404.1	-157.0	-252.2	297.1	0.00	0.00	0.00	
2,480.0	15.65	238.10	2,442.6	-162.7	-261.4	307.9	0.00	0.00	0.00	
2,520.0	15.65	238.10	2,481.1	-168.4	-270.5	318.7	0.00	0.00	0.00	
2,560.0	15.65	238.10	2,519.6	-174.1	-279.7	329.4	0.00	0.00	0.00	
2,600.0	15.65	238.10	2,558.1	-179.8	-288.8	340.2	0.00	0.00	0.00	
2,640.0	15.65	238.10	2,596.7	-185.5	-298.0	351.0	0.00	0.00	0.00	
2,680.0	15.65	238.10	2,635.2	-191.2	-307.2	361.8	0.00	0.00	0.00	
2,720.0	15.65	238.10	2,673.7	-196.9	-316.3	372.6	0.00	0.00	0.00	
2,760.0	15.65	238.10	2,712.2	-202.6	-325.5	383.4	0.00	0.00	0.00	
2,800.0	15.65	238.10	2,750.7	-208.3	-334.7	394.2	0.00	0.00	0.00	
2,840.0	15.65	238.10	2,789.2	-214.0	-343.8	405.0	0.00	0.00	0.00	
2,880.0	15.65	238.10	2,827.8	-219.7	-353.0	415.8	0.00	0.00	0.00	
2,920.0	15.65	238.10	2,866.3	-225.4	-362.1	426.6	0.00	0.00	0.00	
2,960.0	15.65	238.10	2,904.8	-231.1	-371.3	437.4	0.00	0.00	0.00	
3,000.0	15.65	238.10	2,943.3	-236.8	-380.5	448.1	0.00	0.00	0.00	
3,040.0	15.65	238.10	2,981.8	-242.5	-389.6	458.9	0.00	0.00	0.00	
3,080.0	15.65	238.10	3,020.3	-248.2	-398.8	469.7	0.00	0.00	0.00	
3,120.0	15.65	238.10	3,058.9	-253.9	-407.9	480.5	0.00	0.00	0.00	
3,160.0	15.65	238.10	3,097.4	-259.6	-417.1	491.3	0.00	0.00	0.00	
3,200.0	15.65	238.10	3,135.9	-265.3	-426.3	502.1	0.00	0.00	0.00	
3,240.0	15.65	238.10	3,174.4	-271.0	-435.4	512.9	0.00	0.00	0.00	
3,280.0	15.65	238.10	3,212.9	-276.8	-444.6	523.7	0.00	0.00	0.00	
3,320.0	15.65	238.10	3,251.4	-282.5	-453.7	534.5	0.00	0.00	0.00	
3,360.0	15.65	238.10	3,290.0	-288.2	-462.9	545.3	0.00	0.00	0.00	
3,400.0	15.65	238.10	3,328.5	-293.9	-472.1	556.1	0.00	0.00	0.00	
3,440.0	15.65	238.10	3,367.0	-299.6	-481.2	566.9	0.00	0.00	0.00	
3,480.0	15.65	238.10	3,405.5	-305.3	-490.4	577.6	0.00	0.00	0.00	
3,520.0	15.65	238.10	3,444.0	-311.0	-499.6	588.4	0.00	0.00	0.00	
3,560.0	15.65	238.10	3,482.5	-316.7	-508.7	599.2	0.00	0.00	0.00	
3,600.0	15.65	238.10	3,521.1	-322.4	-517.9	610.0	0.00	0.00	0.00	
3,640.0	15.65	238.10	3,559.6	-328.1	-527.0	620.8	0.00	0.00	0.00	
3,680.0	15.65	238.10	3,598.1	-333.8	-536.2	631.6	0.00	0.00	0.00	
3,720.0	15.65	238.10	3,636.6	-339.5	-545.4	642.4	0.00	0.00	0.00	
3,760.0	15.65	238.10	3,675.1	-345.2	-554.5	653.2	0.00	0.00	0.00	
3,800.0	15.65	238.10	3,713.6	-350.9	-563.7	664.0	0.00	0.00	0.00	
3,840.0	15.65	238.10	3,752.2	-356.6	-572.8	674.8	0.00	0.00	0.00	
3,880.0	15.65	238.10	3,790.7	-362.3	-582.0	685.6	0.00	0.00	0.00	
3,920.0	15.65	238.10	3,829.2	-368.0	-591.2	696.3	0.00	0.00	0.00	
3,960.0	15.65	238.10	3,867.7	-373.7	-600.3	707.1	0.00	0.00	0.00	
4,000.0	15.65	238.10	3,906.2	-379.4	-609.5	717.9	0.00	0.00	0.00	
4,040.0	15.65	238.10	3,944.8	-385.1	-618.6	728.7	0.00	0.00	0.00	
4,080.0	15.65	238.10	3,983.3	-390.8	-627.8	739.5	0.00	0.00	0.00	
4,120.0	15.65	238.10	4,021.8	-396.5	-637.0	750.3	0.00	0.00	0.00	

**Database:** Landmark  
**Company:** Synergy Resources  
**Project:** SEC.21-T4N-R68W  
**Site:** SRC-Cletcher Pad Sec.21-T4N-R68W  
**Well:** SRC-Cletcher 12-21D  
**Wellbore:** SRC-Cletcher 12-21D  
**Design:** SRC-Cletcher 12-21D Plan #2 (8-29-11)

**Local Co-ordinate Reference:** Well SRC-Cletcher 12-21D  
**TVD Reference:** WELL @ 4949.0ft (Original Well Elev)  
**MD Reference:** WELL @ 4949.0ft (Original Well Elev)  
**North Reference:** True  
**Survey Calculation Method:** Minimum Curvature

Planned Survey									
Measured Depth (ft)	Inclination (°)	Azimuth (°)	Vertical Depth (ft)	+N/-S (ft)	+E/-W (ft)	Vertical Section (ft)	Dogleg Rate (°/100ft)	Build Rate (°/100ft)	Turn Rate (°/100ft)
4,160.0	15.65	238.10	4,060.3	-402.2	-646.1	761.1	0.00	0.00	0.00
4,200.0	15.65	238.10	4,098.8	-407.9	-655.3	771.9	0.00	0.00	0.00
4,240.0	15.65	238.10	4,137.3	-413.6	-664.5	782.7	0.00	0.00	0.00
4,280.0	15.65	238.10	4,175.9	-419.3	-673.6	793.5	0.00	0.00	0.00
4,320.0	15.65	238.10	4,214.4	-425.0	-682.8	804.3	0.00	0.00	0.00
4,333.3	15.65	238.10	4,227.1	-426.9	-685.8	807.8	0.00	0.00	0.00
4,360.0	15.12	238.10	4,252.9	-430.7	-691.8	814.9	2.00	-2.00	0.00
4,400.0	14.32	238.10	4,291.6	-436.0	-700.5	825.1	2.00	-2.00	0.00
4,440.0	13.52	238.10	4,330.4	-441.1	-708.6	834.7	2.00	-2.00	0.00
4,480.0	12.72	238.10	4,369.4	-445.9	-716.3	843.8	2.00	-2.00	0.00
4,520.0	11.92	238.10	4,408.5	-450.4	-723.6	852.3	2.00	-2.00	0.00
4,560.0	11.12	238.10	4,447.7	-454.6	-730.4	860.3	2.00	-2.00	0.00
4,600.0	10.32	238.10	4,487.0	-458.6	-736.7	867.7	2.00	-2.00	0.00
4,640.0	9.52	238.10	4,526.4	-462.2	-742.5	874.6	2.00	-2.00	0.00
4,680.0	8.72	238.10	4,565.9	-465.6	-747.9	881.0	2.00	-2.00	0.00
4,720.0	7.92	238.10	4,605.4	-468.6	-752.8	886.8	2.00	-2.00	0.00
4,760.0	7.12	238.10	4,645.1	-471.4	-757.3	892.0	2.00	-2.00	0.00
4,800.0	6.32	238.10	4,684.8	-473.9	-761.2	896.7	2.00	-2.00	0.00
4,840.0	5.52	238.10	4,724.6	-476.0	-764.7	900.8	2.00	-2.00	0.00
4,880.0	4.72	238.10	4,764.4	-477.9	-767.8	904.4	2.00	-2.00	0.00
4,920.0	3.92	238.10	4,804.3	-479.5	-770.3	907.4	2.00	-2.00	0.00
4,960.0	3.12	238.10	4,844.3	-480.8	-772.4	909.8	2.00	-2.00	0.00
5,000.0	2.32	238.10	4,884.2	-481.8	-774.0	911.7	2.00	-2.00	0.00
5,040.0	1.52	238.10	4,924.2	-482.5	-775.1	913.0	2.00	-2.00	0.00
5,080.0	0.72	238.10	4,964.2	-482.9	-775.8	913.8	2.00	-2.00	0.00
5,115.8	0.00	0.00	5,000.0	-483.0	-776.0	914.1	2.00	-2.00	0.00
TARGET BHL 1997'FNL, 665'FWL									
5,120.0	0.00	0.00	5,004.2	-483.0	-776.0	914.1	0.00	0.00	0.00
5,160.0	0.00	0.00	5,044.2	-483.0	-776.0	914.1	0.00	0.00	0.00
5,200.0	0.00	0.00	5,084.2	-483.0	-776.0	914.1	0.00	0.00	0.00
5,240.0	0.00	0.00	5,124.2	-483.0	-776.0	914.1	0.00	0.00	0.00
5,280.0	0.00	0.00	5,164.2	-483.0	-776.0	914.1	0.00	0.00	0.00
5,320.0	0.00	0.00	5,204.2	-483.0	-776.0	914.1	0.00	0.00	0.00
5,360.0	0.00	0.00	5,244.2	-483.0	-776.0	914.1	0.00	0.00	0.00
5,400.0	0.00	0.00	5,284.2	-483.0	-776.0	914.1	0.00	0.00	0.00
5,440.0	0.00	0.00	5,324.2	-483.0	-776.0	914.1	0.00	0.00	0.00
5,480.0	0.00	0.00	5,364.2	-483.0	-776.0	914.1	0.00	0.00	0.00
5,520.0	0.00	0.00	5,404.2	-483.0	-776.0	914.1	0.00	0.00	0.00
5,560.0	0.00	0.00	5,444.2	-483.0	-776.0	914.1	0.00	0.00	0.00
5,600.0	0.00	0.00	5,484.2	-483.0	-776.0	914.1	0.00	0.00	0.00
5,640.0	0.00	0.00	5,524.2	-483.0	-776.0	914.1	0.00	0.00	0.00
5,680.0	0.00	0.00	5,564.2	-483.0	-776.0	914.1	0.00	0.00	0.00
5,720.0	0.00	0.00	5,604.2	-483.0	-776.0	914.1	0.00	0.00	0.00
5,760.0	0.00	0.00	5,644.2	-483.0	-776.0	914.1	0.00	0.00	0.00
5,800.0	0.00	0.00	5,684.2	-483.0	-776.0	914.1	0.00	0.00	0.00
5,840.0	0.00	0.00	5,724.2	-483.0	-776.0	914.1	0.00	0.00	0.00
5,880.0	0.00	0.00	5,764.2	-483.0	-776.0	914.1	0.00	0.00	0.00
5,920.0	0.00	0.00	5,804.2	-483.0	-776.0	914.1	0.00	0.00	0.00
5,960.0	0.00	0.00	5,844.2	-483.0	-776.0	914.1	0.00	0.00	0.00
6,000.0	0.00	0.00	5,884.2	-483.0	-776.0	914.1	0.00	0.00	0.00
6,040.0	0.00	0.00	5,924.2	-483.0	-776.0	914.1	0.00	0.00	0.00
6,080.0	0.00	0.00	5,964.2	-483.0	-776.0	914.1	0.00	0.00	0.00
6,120.0	0.00	0.00	6,004.2	-483.0	-776.0	914.1	0.00	0.00	0.00
6,160.0	0.00	0.00	6,044.2	-483.0	-776.0	914.1	0.00	0.00	0.00

**Database:** Landmark  
**Company:** Synergy Resources  
**Project:** SEC.21-T4N-R68W  
**Site:** SRC-Cletcher Pad Sec.21-T4N-R68W  
**Well:** SRC-Cletcher 12-21D  
**Wellbore:** SRC-Cletcher 12-21D  
**Design:** SRC-Cletcher 12-21D Plan #2 (8-29-11)

**Local Co-ordinate Reference:** Well SRC-Cletcher 12-21D  
**TVD Reference:** WELL @ 4949.0ft (Original Well Elev)  
**MD Reference:** WELL @ 4949.0ft (Original Well Elev)  
**North Reference:** True  
**Survey Calculation Method:** Minimum Curvature

### Planned Survey

Measured Depth (ft)	Inclination (°)	Azimuth (°)	Vertical Depth (ft)	+N/-S (ft)	+E/-W (ft)	Vertical Section (ft)	Dogleg Rate (°/100ft)	Build Rate (°/100ft)	Turn Rate (°/100ft)
6,200.0	0.00	0.00	6,084.2	-483.0	-776.0	914.1	0.00	0.00	0.00
6,240.0	0.00	0.00	6,124.2	-483.0	-776.0	914.1	0.00	0.00	0.00
6,280.0	0.00	0.00	6,164.2	-483.0	-776.0	914.1	0.00	0.00	0.00
6,315.8	0.00	0.00	6,200.0	-483.0	-776.0	914.1	0.00	0.00	0.00
<b>NIOBRARA - LEGAL BOX 400' X 400' 1997'FNL, 665'FWL</b>									
6,320.0	0.00	0.00	6,204.2	-483.0	-776.0	914.1	0.00	0.00	0.00
6,360.0	0.00	0.00	6,244.2	-483.0	-776.0	914.1	0.00	0.00	0.00
6,400.0	0.00	0.00	6,284.2	-483.0	-776.0	914.1	0.00	0.00	0.00
6,440.0	0.00	0.00	6,324.2	-483.0	-776.0	914.1	0.00	0.00	0.00
6,480.0	0.00	0.00	6,364.2	-483.0	-776.0	914.1	0.00	0.00	0.00
6,515.8	0.00	0.00	6,400.0	-483.0	-776.0	914.1	0.00	0.00	0.00
<b>CODELL</b>									
6,520.0	0.00	0.00	6,404.2	-483.0	-776.0	914.1	0.00	0.00	0.00
6,560.0	0.00	0.00	6,444.2	-483.0	-776.0	914.1	0.00	0.00	0.00
6,600.0	0.00	0.00	6,484.2	-483.0	-776.0	914.1	0.00	0.00	0.00
6,640.0	0.00	0.00	6,524.2	-483.0	-776.0	914.1	0.00	0.00	0.00
6,680.0	0.00	0.00	6,564.2	-483.0	-776.0	914.1	0.00	0.00	0.00
6,720.0	0.00	0.00	6,604.2	-483.0	-776.0	914.1	0.00	0.00	0.00
6,760.0	0.00	0.00	6,644.2	-483.0	-776.0	914.1	0.00	0.00	0.00
6,800.0	0.00	0.00	6,684.2	-483.0	-776.0	914.1	0.00	0.00	0.00
6,840.0	0.00	0.00	6,724.2	-483.0	-776.0	914.1	0.00	0.00	0.00
6,880.0	0.00	0.00	6,764.2	-483.0	-776.0	914.1	0.00	0.00	0.00
6,920.0	0.00	0.00	6,804.2	-483.0	-776.0	914.1	0.00	0.00	0.00
6,960.0	0.00	0.00	6,844.2	-483.0	-776.0	914.1	0.00	0.00	0.00
7,000.0	0.00	0.00	6,884.2	-483.0	-776.0	914.1	0.00	0.00	0.00
7,040.0	0.00	0.00	6,924.2	-483.0	-776.0	914.1	0.00	0.00	0.00
7,080.0	0.00	0.00	6,964.2	-483.0	-776.0	914.1	0.00	0.00	0.00
7,120.0	0.00	0.00	7,004.2	-483.0	-776.0	914.1	0.00	0.00	0.00
7,160.0	0.00	0.00	7,044.2	-483.0	-776.0	914.1	0.00	0.00	0.00
7,200.0	0.00	0.00	7,084.2	-483.0	-776.0	914.1	0.00	0.00	0.00
7,215.8	0.00	0.00	7,100.0	-483.0	-776.0	914.1	0.00	0.00	0.00
<b>J-SAND</b>									
7,240.0	0.00	0.00	7,124.2	-483.0	-776.0	914.1	0.00	0.00	0.00
7,280.0	0.00	0.00	7,164.2	-483.0	-776.0	914.1	0.00	0.00	0.00
7,320.0	0.00	0.00	7,204.2	-483.0	-776.0	914.1	0.00	0.00	0.00
7,360.0	0.00	0.00	7,244.2	-483.0	-776.0	914.1	0.00	0.00	0.00
7,400.0	0.00	0.00	7,284.2	-483.0	-776.0	914.1	0.00	0.00	0.00
7,440.0	0.00	0.00	7,324.2	-483.0	-776.0	914.1	0.00	0.00	0.00
7,480.0	0.00	0.00	7,364.2	-483.0	-776.0	914.1	0.00	0.00	0.00
7,520.0	0.00	0.00	7,404.2	-483.0	-776.0	914.1	0.00	0.00	0.00
7,560.0	0.00	0.00	7,444.2	-483.0	-776.0	914.1	0.00	0.00	0.00
7,600.0	0.00	0.00	7,484.2	-483.0	-776.0	914.1	0.00	0.00	0.00
7,640.0	0.00	0.00	7,524.2	-483.0	-776.0	914.1	0.00	0.00	0.00
7,680.0	0.00	0.00	7,564.2	-483.0	-776.0	914.1	0.00	0.00	0.00
7,720.0	0.00	0.00	7,604.2	-483.0	-776.0	914.1	0.00	0.00	0.00
7,760.0	0.00	0.00	7,644.2	-483.0	-776.0	914.1	0.00	0.00	0.00
7,800.0	0.00	0.00	7,684.2	-483.0	-776.0	914.1	0.00	0.00	0.00
7,840.0	0.00	0.00	7,724.2	-483.0	-776.0	914.1	0.00	0.00	0.00
7,880.0	0.00	0.00	7,764.2	-483.0	-776.0	914.1	0.00	0.00	0.00
7,920.0	0.00	0.00	7,804.2	-483.0	-776.0	914.1	0.00	0.00	0.00
7,960.0	0.00	0.00	7,844.2	-483.0	-776.0	914.1	0.00	0.00	0.00
8,000.0	0.00	0.00	7,884.2	-483.0	-776.0	914.1	0.00	0.00	0.00
8,040.0	0.00	0.00	7,924.2	-483.0	-776.0	914.1	0.00	0.00	0.00

**Database:** Landmark  
**Company:** Synergy Resources  
**Project:** SEC.21-T4N-R68W  
**Site:** SRC-Cletcher Pad Sec.21-T4N-R68W  
**Well:** SRC-Cletcher 12-21D  
**Wellbore:** SRC-Cletcher 12-21D  
**Design:** SRC-Cletcher 12-21D Plan #2 (8-29-11)

**Local Co-ordinate Reference:** Well SRC-Cletcher 12-21D  
**TVD Reference:** WELL @ 4949.0ft (Original Well Elev)  
**MD Reference:** WELL @ 4949.0ft (Original Well Elev)  
**North Reference:** True  
**Survey Calculation Method:** Minimum Curvature

#### Planned Survey

Measured Depth (ft)	Inclination (°)	Azimuth (°)	Vertical Depth (ft)	+N/-S (ft)	+E/-W (ft)	Vertical Section (ft)	Dogleg Rate (°/100ft)	Build Rate (°/100ft)	Turn Rate (°/100ft)
8,080.0	0.00	0.00	7,964.2	-483.0	-776.0	914.1	0.00	0.00	0.00
8,120.0	0.00	0.00	8,004.2	-483.0	-776.0	914.1	0.00	0.00	0.00
8,150.8	0.00	0.00	8,035.0	-483.0	-776.0	914.1	0.00	0.00	0.00

#### Targets

##### Target Name

- hit/miss target	Dip Angle (°)	Dip Dir. (°)	TVD (ft)	+N/-S (ft)	+E/-W (ft)	Northing (ft)	Easting (ft)	Latitude	Longitude
- Shape									
TARGET BHL 1997'F	0.00	0.00	5,000.0	-483.0	-776.0	1,352,700.32	3,135,147.82	40.300549	-105.015456
- plan hits target center									
- Point									
LEGAL BOX 400' X 400'	0.00	0.00	6,200.0	-483.0	-776.0	1,352,700.37	3,135,147.80	40.300549	-105.015456
- plan misses target center by 0.1ft at 6315.8ft MD (6200.0 TVD, -483.0 N, -776.0 E)									
- Rectangle (sides W400.0 H400.0 D1,835.0)									

#### Casing Points

Measured Depth (ft)	Vertical Depth (ft)	Name	Casing Diameter (")	Hole Diameter (")
550.0	550.0	8 5/8"	8-5/8	12-1/4

#### Formations

Measured Depth (ft)	Vertical Depth (ft)	Name	Lithology	Dip (°)	Dip Direction (°)
6,315.8	6,200.0	NIOBRARA		0.00	
6,515.8	6,400.0	CODELL		0.00	
7,215.8	7,100.0	J-SAND		0.00	





## **Directional**

### **Synergy Resources**

**SEC.21-T4N-R68W**

**SRC-Cletcher Pad Sec.21-T4N-R68W**

**SRC-Cletcher 12-21D**

**SRC-Cletcher 12-21D**

**SRC-Cletcher 12-21D Plan #2 (8-29-11)**

### **Anticollision Report**

**29 August, 2011**

<b>Company:</b>	Synergy Resources	<b>Local Co-ordinate Reference:</b>	Well SRC-Cletcher 12-21D
<b>Project:</b>	SEC.21-T4N-R68W	<b>TVD Reference:</b>	WELL @ 4949.0ft (Original Well Elev)
<b>Reference Site:</b>	SRC-Cletcher Pad Sec.21-T4N-R68W	<b>MD Reference:</b>	WELL @ 4949.0ft (Original Well Elev)
<b>Site Error:</b>	0.0ft	<b>North Reference:</b>	True
<b>Reference Well:</b>	SRC-Cletcher 12-21D	<b>Survey Calculation Method:</b>	Minimum Curvature
<b>Well Error:</b>	0.0ft	<b>Output errors are at</b>	2.00 sigma
<b>Reference Wellbore</b>	SRC-Cletcher 12-21D	<b>Database:</b>	Landmark
<b>Reference Design:</b>	SRC-Cletcher 12-21D Plan #2 (8-29-11)	<b>Offset TVD Reference:</b>	Offset Datum

<b>Reference</b>	SRC-Cletcher 12-21D Plan #2 (8-29		
<b>Filter type:</b>	NO GLOBAL FILTER: Using user defined selection & filtering criteria		
<b>Interpolation Method:</b>	Stations	<b>Error Model:</b>	ISCWSA
<b>Depth Range:</b>	Unlimited	<b>Scan Method:</b>	Closest Approach 3D
<b>Results Limited by:</b>	Maximum center-center distance of 10,000.0ft	<b>Error Surface:</b>	Elliptical Conic
<b>Warning Levels Evaluated at:</b>	2.00 Sigma		

<b>Survey Tool Program</b>	<b>Date</b> 8/29/2011			
<b>From (ft)</b>	<b>To (ft)</b>	<b>Survey (Wellbore)</b>	<b>Tool Name</b>	<b>Description</b>
0.0	8,150.8	SRC-Cletcher 12-21D Plan #2 (8-29-11) (§	MWD	MWD - Standard

<b>Summary</b>						
<b>Site Name</b>	<b>Reference Measured Depth (ft)</b>	<b>Offset Measured Depth (ft)</b>	<b>Distance Between Centres (ft)</b>	<b>Distance Between Ellipses (ft)</b>	<b>Separation Factor</b>	<b>Warning</b>
<b>Offset Well - Wellbore - Design</b>						
SRC-Cletcher Pad Sec.21-T4N-R68W						
SRC-Cletcher 21A (Vert.) - Wellbore #1 - Design #1	950.0	950.0	21.9	17.8	5.405 CC, ES	
SRC-Cletcher 21A (Vert.) - Wellbore #1 - Design #1	1,100.0	1,099.9	24.1	19.4	5.158 SF	

Offset Design		SRC-Cletcher Pad Sec.21-T4N-R68W - SRC-Cletcher 21A (Vert.) - Wellbore #1 - Design #1										Offset Site Error:		0.0 ft
Survey Program: 0-MWD												Offset Well Error:		0.0 ft
Reference		Offset		Semi Major Axis			Distance							
Measured Depth	Vertical Depth	Measured Depth	Vertical Depth	Reference	Offset	Highside Toolface	Offset Wellbore Centre		Between Centres	Between Ellipses	Minimum Separation	Separation Factor	Warning	
(ft)	(ft)	(ft)	(ft)	(ft)	(ft)	(°)	+N/-S (ft)	+E/-W (ft)	(ft)	(ft)	(ft)			
0.0	0.0	0.0	0.0	0.0	0.0	-1.46	21.9	-0.6	21.9					
100.0	100.0	100.0	100.0	0.1	0.1	-1.46	21.9	-0.6	21.9	21.6	0.22	97.281		
200.0	200.0	200.0	200.0	0.3	0.3	-1.46	21.9	-0.6	21.9	21.2	0.67	32.427		
300.0	300.0	300.0	300.0	0.6	0.6	-1.46	21.9	-0.6	21.9	20.7	1.12	19.456		
400.0	400.0	400.0	400.0	0.8	0.8	-1.46	21.9	-0.6	21.9	20.3	1.57	13.897		
500.0	500.0	500.0	500.0	1.0	1.0	-1.46	21.9	-0.6	21.9	19.8	2.02	10.809		
600.0	600.0	600.0	600.0	1.2	1.2	-1.46	21.9	-0.6	21.9	19.4	2.47	8.844		
700.0	700.0	700.0	700.0	1.5	1.5	-1.46	21.9	-0.6	21.9	18.9	2.92	7.483		
800.0	800.0	800.0	800.0	1.7	1.7	-1.46	21.9	-0.6	21.9	18.5	3.37	6.485		
900.0	900.0	900.0	900.0	1.9	1.9	-1.46	21.9	-0.6	21.9	18.0	3.82	5.722		
950.0	950.0	950.0	950.0	2.0	2.0	-1.46	21.9	-0.6	21.9	17.8	4.05	5.405 CC, ES		
1,000.0	1,000.0	1,000.0	1,000.0	2.1	2.1	121.41	21.9	-0.6	22.1	17.8	4.26	5.186		
1,100.0	1,099.9	1,099.9	1,099.9	2.3	2.4	128.48	21.9	-0.6	24.1	19.4	4.67	5.158 SF		
1,200.0	1,199.7	1,199.7	1,199.7	2.5	2.6	139.27	21.9	-0.6	29.0	23.9	5.09	5.690		
1,300.0	1,299.1	1,299.1	1,299.1	2.7	2.8	149.65	21.9	-0.6	37.5	32.0	5.51	6.812		
1,400.0	1,398.2	1,398.2	1,398.2	3.0	3.0	157.62	21.9	-0.6	50.0	44.1	5.92	8.450		
1,500.0	1,496.6	1,496.6	1,496.6	3.3	3.3	163.23	21.9	-0.6	66.4	60.1	6.33	10.493		
1,600.0	1,594.4	1,594.4	1,594.4	3.6	3.5	167.10	21.9	-0.6	86.6	79.8	6.74	12.846		
1,700.0	1,691.5	1,691.5	1,691.5	4.0	3.7	169.82	21.9	-0.6	110.3	103.2	7.15	15.439		
1,732.6	1,722.9	1,722.9	1,722.9	4.2	3.8	170.52	21.9	-0.6	118.8	111.5	7.28	16.327		
1,800.0	1,787.8	1,787.8	1,787.8	4.5	3.9	171.78	21.9	-0.6	136.8	129.2	7.58	18.050		
1,900.0	1,884.1	1,884.1	1,884.1	4.9	4.1	173.13	21.9	-0.6	163.6	155.5	8.03	20.360		
2,000.0	1,980.4	1,980.4	1,980.4	5.4	4.3	174.10	21.9	-0.6	190.4	181.9	8.49	22.413		
2,100.0	2,076.7	2,076.7	2,076.7	6.0	4.6	174.83	21.9	-0.6	217.2	208.3	8.96	24.244		
2,200.0	2,173.0	2,173.0	2,173.0	6.5	4.8	175.40	21.9	-0.6	244.1	234.7	9.43	25.884		

CC - Min centre to center distance or convergent point, SF - min separation factor, ES - min ellipse separation

<b>Company:</b>	Synergy Resources	<b>Local Co-ordinate Reference:</b>	Well SRC-Cletcher 12-21D
<b>Project:</b>	SEC.21-T4N-R68W	<b>TVD Reference:</b>	WELL @ 4949.0ft (Original Well Elev)
<b>Reference Site:</b>	SRC-Cletcher Pad Sec.21-T4N-R68W	<b>MD Reference:</b>	WELL @ 4949.0ft (Original Well Elev)
<b>Site Error:</b>	0.0ft	<b>North Reference:</b>	True
<b>Reference Well:</b>	SRC-Cletcher 12-21D	<b>Survey Calculation Method:</b>	Minimum Curvature
<b>Well Error:</b>	0.0ft	<b>Output errors are at</b>	2.00 sigma
<b>Reference Wellbore</b>	SRC-Cletcher 12-21D	<b>Database:</b>	Landmark
<b>Reference Design:</b>	SRC-Cletcher 12-21D Plan #2 (8-29-11)	<b>Offset TVD Reference:</b>	Offset Datum

Offset Design													Offset Site Error:	0.0ft
Survey Program: 0-MWD													Offset Well Error:	0.0ft
Reference		Offset		Semi Major Axis			Distance							Warning
Measured Depth (ft)	Vertical Depth (ft)	Measured Depth (ft)	Vertical Depth (ft)	Reference (ft)	Offset (ft)	Highside Toolface (°)	Offset Wellbore Centre +N/-S (ft)	+E/-W (ft)	Between Centres (ft)	Between Ellipses (ft)	Minimum Separation (ft)	Separation Factor		
2,300.0	2,269.3	2,269.3	2,269.3	7.0	5.0	175.86	21.9	-0.6	271.0	261.1	9.91	27.361		
2,400.0	2,365.6	2,365.6	2,365.6	7.5	5.2	176.23	21.9	-0.6	298.0	287.6	10.38	28.694		
2,500.0	2,461.8	2,461.8	2,461.8	8.1	5.4	176.55	21.9	-0.6	324.9	314.0	10.86	29.904		
2,600.0	2,558.1	2,558.1	2,558.1	8.6	5.6	176.81	21.9	-0.6	351.8	340.5	11.35	31.005		
2,700.0	2,654.4	2,654.4	2,654.4	9.2	5.9	177.04	21.9	-0.6	378.8	366.9	11.83	32.012		
2,800.0	2,750.7	2,750.7	2,750.7	9.8	6.1	177.23	21.9	-0.6	405.7	393.4	12.32	32.934		
2,900.0	2,847.0	2,847.0	2,847.0	10.3	6.3	177.41	21.9	-0.6	432.7	419.9	12.81	33.783		
3,000.0	2,943.3	2,943.3	2,943.3	10.9	6.5	177.56	21.9	-0.6	459.6	446.3	13.30	34.566		
3,100.0	3,039.6	3,039.6	3,039.6	11.4	6.7	177.69	21.9	-0.6	486.6	472.8	13.79	35.290		
3,200.0	3,135.9	3,135.9	3,135.9	12.0	6.9	177.82	21.9	-0.6	513.5	499.2	14.28	35.962		
3,300.0	3,232.2	3,232.2	3,232.2	12.6	7.2	177.92	21.9	-0.6	540.5	525.7	14.77	36.587		
3,400.0	3,328.5	3,328.5	3,328.5	13.1	7.4	178.02	21.9	-0.6	567.5	552.2	15.27	37.169		
3,500.0	3,424.8	3,424.8	3,424.8	13.7	7.6	178.11	21.9	-0.6	594.4	578.7	15.76	37.713		
3,600.0	3,521.1	3,521.1	3,521.1	14.3	7.8	178.19	21.9	-0.6	621.4	605.1	16.26	38.222		
3,700.0	3,617.4	3,617.4	3,617.4	14.8	8.0	178.27	21.9	-0.6	648.3	631.6	16.75	38.699		
3,800.0	3,713.6	3,713.6	3,713.6	15.4	8.2	178.34	21.9	-0.6	675.3	658.1	17.25	39.148		
3,900.0	3,809.9	3,809.9	3,809.9	16.0	8.5	178.40	21.9	-0.6	702.3	684.5	17.75	39.570		
4,000.0	3,906.2	3,906.2	3,906.2	16.6	8.7	178.46	21.9	-0.6	729.2	711.0	18.25	39.968		
4,100.0	4,002.5	4,002.5	4,002.5	17.1	8.9	178.52	21.9	-0.6	756.2	737.5	18.74	40.344		
4,200.0	4,098.8	4,098.8	4,098.8	17.7	9.1	178.57	21.9	-0.6	783.2	763.9	19.24	40.699		
4,300.0	4,195.1	4,195.1	4,195.1	18.3	9.3	178.62	21.9	-0.6	810.2	790.4	19.74	41.036		
4,333.3	4,227.1	4,227.1	4,227.1	18.5	9.4	178.63	21.9	-0.6	819.1	799.2	19.91	41.144		
4,400.0	4,291.6	4,291.6	4,291.6	18.8	9.5	178.67	21.9	-0.6	836.4	816.1	20.29	41.226		
4,500.0	4,388.9	4,388.9	4,388.9	19.2	9.8	178.71	21.9	-0.6	859.4	838.6	20.82	41.287		
4,600.0	4,487.0	4,487.0	4,487.0	19.5	10.0	178.75	21.9	-0.6	879.0	857.7	21.31	41.240		
4,700.0	4,585.6	4,585.6	4,585.6	19.8	10.2	178.78	21.9	-0.6	895.2	873.4	21.78	41.097		
4,800.0	4,684.8	4,684.8	4,684.8	20.0	10.4	178.80	21.9	-0.6	907.9	885.7	22.22	40.863		
4,900.0	4,784.4	4,784.4	4,784.4	20.3	10.6	178.82	21.9	-0.6	917.2	894.6	22.62	40.545		
5,000.0	4,884.2	4,884.2	4,884.2	20.4	10.9	178.83	21.9	-0.6	923.0	900.0	22.99	40.148		
5,100.0	4,984.2	4,984.2	4,984.2	20.5	11.1	178.83	21.9	-0.6	925.3	902.0	23.32	39.673		
5,115.8	5,000.0	5,000.0	5,000.0	20.6	11.1	56.93	21.9	-0.6	925.3	901.9	23.37	39.589		
5,200.0	5,084.2	5,084.2	5,084.2	20.6	11.3	56.93	21.9	-0.6	925.3	901.6	23.71	39.029		
5,300.0	5,184.2	5,184.2	5,184.2	20.8	11.5	56.93	21.9	-0.6	925.3	901.2	24.11	38.384		
5,400.0	5,284.2	5,284.2	5,284.2	20.9	11.8	56.93	21.9	-0.6	925.3	900.8	24.51	37.759		
5,500.0	5,384.2	5,384.2	5,384.2	21.0	12.0	56.93	21.9	-0.6	925.3	900.4	24.91	37.151		
5,600.0	5,484.2	5,484.2	5,484.2	21.1	12.2	56.93	21.9	-0.6	925.3	900.0	25.31	36.560		
5,700.0	5,584.2	5,584.2	5,584.2	21.2	12.4	56.93	21.9	-0.6	925.3	899.6	25.71	35.985		
5,800.0	5,684.2	5,684.2	5,684.2	21.3	12.7	56.93	21.9	-0.6	925.3	899.2	26.12	35.427		
5,900.0	5,784.2	5,784.2	5,784.2	21.4	12.9	56.93	21.9	-0.6	925.3	898.8	26.53	34.884		
6,000.0	5,884.2	5,884.2	5,884.2	21.6	13.1	56.93	21.9	-0.6	925.3	898.4	26.93	34.355		
6,100.0	5,984.2	5,984.2	5,984.2	21.7	13.3	56.93	21.9	-0.6	925.3	898.0	27.34	33.841		
6,200.0	6,084.2	6,084.2	6,084.2	21.8	13.6	56.93	21.9	-0.6	925.3	897.6	27.75	33.341		
6,300.0	6,184.2	6,184.2	6,184.2	21.9	13.8	56.93	21.9	-0.6	925.3	897.2	28.16	32.854		
6,400.0	6,284.2	6,284.2	6,284.2	22.1	14.0	56.93	21.9	-0.6	925.3	896.7	28.58	32.379		
6,500.0	6,384.2	6,384.2	6,384.2	22.2	14.2	56.93	21.9	-0.6	925.3	896.3	28.99	31.918		
6,600.0	6,484.2	6,484.2	6,484.2	22.3	14.5	56.93	21.9	-0.6	925.3	895.9	29.41	31.468		
6,700.0	6,584.2	6,584.2	6,584.2	22.4	14.7	56.93	21.9	-0.6	925.3	895.5	29.82	31.029		
6,800.0	6,684.2	6,684.2	6,684.2	22.6	14.9	56.93	21.9	-0.6	925.3	895.1	30.24	30.602		
6,900.0	6,784.2	6,784.2	6,784.2	22.7	15.1	56.93	21.9	-0.6	925.3	894.7	30.65	30.185		
7,000.0	6,884.2	6,884.2	6,884.2	22.9	15.4	56.93	21.9	-0.6	925.3	894.2	31.07	29.779		
7,100.0	6,984.2	6,984.2	6,984.2	23.0	15.6	56.93	21.9	-0.6	925.3	893.8	31.49	29.383		
7,200.0	7,084.2	7,084.2	7,084.2	23.1	15.8	56.93	21.9	-0.6	925.3	893.4	31.91	28.996		

CC - Min centre to center distance or convergent point, SF - min separation factor, ES - min ellipse separation

<b>Company:</b>	Synergy Resources	<b>Local Co-ordinate Reference:</b>	Well SRC-Cletcher 12-21D
<b>Project:</b>	SEC.21-T4N-R68W	<b>TVD Reference:</b>	WELL @ 4949.0ft (Original Well Elev)
<b>Reference Site:</b>	SRC-Cletcher Pad Sec.21-T4N-R68W	<b>MD Reference:</b>	WELL @ 4949.0ft (Original Well Elev)
<b>Site Error:</b>	0.0ft	<b>North Reference:</b>	True
<b>Reference Well:</b>	SRC-Cletcher 12-21D	<b>Survey Calculation Method:</b>	Minimum Curvature
<b>Well Error:</b>	0.0ft	<b>Output errors are at</b>	2.00 sigma
<b>Reference Wellbore</b>	SRC-Cletcher 12-21D	<b>Database:</b>	Landmark
<b>Reference Design:</b>	SRC-Cletcher 12-21D Plan #2 (8-29-11)	<b>Offset TVD Reference:</b>	Offset Datum

Offset Design      SRC-Cletcher Pad Sec.21-T4N-R68W - SRC-Cletcher 21A (Vert.) - Wellbore #1 - Design #1													Offset Site Error:	0.0 ft
Survey Program: 0-MWD													Offset Well Error:	0.0 ft
Reference		Offset		Semi Major Axis			Distance						Warning	
Measured Depth	Vertical Depth	Measured Depth	Vertical Depth	Reference	Offset	Highside Toolface	Offset Wellbore Centre		Between Centres	Between Ellipses	Minimum Separation	Separation Factor		
(ft)	(ft)	(ft)	(ft)	(ft)	(ft)	(°)	+N-S (ft)	+E-W (ft)	(ft)	(ft)	(ft)			
7,300.0	7,184.2	7,184.2	7,184.2	23.3	16.0	56.93	21.9	-0.6	925.3	893.0	32.33	28.619		
7,400.0	7,284.2	7,284.2	7,284.2	23.4	16.3	56.93	21.9	-0.6	925.3	892.6	32.75	28.251		
7,500.0	7,384.2	7,384.2	7,384.2	23.5	16.5	56.93	21.9	-0.6	925.3	892.1	33.18	27.892		
7,600.0	7,484.2	7,484.2	7,484.2	23.7	16.7	56.93	21.9	-0.6	925.3	891.7	33.60	27.541		
7,700.0	7,584.2	7,584.2	7,584.2	23.8	16.9	56.93	21.9	-0.6	925.3	891.3	34.02	27.198		
7,800.0	7,684.2	7,684.2	7,684.2	24.0	17.2	56.93	21.9	-0.6	925.3	890.9	34.45	26.863		
7,900.0	7,784.2	7,784.2	7,784.2	24.1	17.4	56.93	21.9	-0.6	925.3	890.5	34.87	26.536		
8,000.0	7,884.2	7,884.2	7,884.2	24.3	17.6	56.93	21.9	-0.6	925.3	890.0	35.30	26.216		
8,100.0	7,984.2	7,984.2	7,984.2	24.4	17.8	56.93	21.9	-0.6	925.3	889.6	35.72	25.904		
8,150.8	8,035.0	8,035.0	8,035.0	24.5	17.9	56.93	21.9	-0.6	925.3	889.4	35.94	25.748		

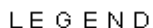
**Company:** Synergy Resources  
**Project:** SEC.21-T4N-R68W  
**Reference Site:** SRC-Cletcher Pad Sec.21-T4N-R68W  
**Site Error:** 0.0ft  
**Reference Well:** SRC-Cletcher 12-21D  
**Well Error:** 0.0ft  
**Reference Wellbore:** SRC-Cletcher 12-21D  
**Reference Design:** SRC-Cletcher 12-21D Plan #2 (8-29-11)

**Local Co-ordinate Reference:** Well SRC-Cletcher 12-21D  
**TVD Reference:** WELL @ 4949.0ft (Original Well Elev)  
**MD Reference:** WELL @ 4949.0ft (Original Well Elev)  
**North Reference:** True  
**Survey Calculation Method:** Minimum Curvature  
**Output errors are at** 2.00 sigma  
**Database:** Landmark  
**Offset TVD Reference:** Offset Datum

Reference Depths are relative to WELL @ 4949.0ft (Original Well Elev) Coordinates are relative to: SRC-Cletcher 12-21D  
 Offset Depths are relative to Offset Datum  
 Central Meridian is -105.500000 °  
 Coordinate System is US State Plane 1983, Colorado Northern Zone  
 Grid Convergence at Surface is: 0.31°



Reference Depths are relative to WELL @ 4949.0ft (Original Well Elev) Coordinates are relative to: SRC-Cletcher 12-21D  
Offset Depths are relative to Offset Datum Coordinate System is US State Plane 1983, Colorado Northern Zone  
Central Meridian is -105.500000 ° Grid Convergence at Surface is: 0.31°



— SRC-Cletcher 21A (Vert.), Wellbore #1, Design #1 V0