

PETROLEUM DEVELOPMENT CORP Weld County CO

Well Name: **Stille 12-6H**

Surface Location: Stille NW-6 Pad Sec.6-T6N-R64W
North American Datum 1983 , US State Plane 1983 , Colorado Northern Zone

Ground Elevation: 4780.0

+N/-S	+E/-W	Northing	Easting	Latitude	Longitude	Slot
0.0	0.0	1432774.71	3250280.33	40.517880	-104.599780	

RKB Ensign 32 - 15' WELL @ 4795.0ft (RKB Ensign 32 - 15')

WELLBORE TARGET DETAILS

Name	TVD	+N/-S	+E/-W	Shape
BHL HARDLINE 460'FEL	1.0	710.9	4027.9	Polygon
SHL HARDLINE 460'FWL	1.0	400.0	-40.0	Polygon
BHL 1321'FNL 500'FEL	6894.0	310.9	3987.9	Point



Azimuths to True North
Magnetic North: 8.77°

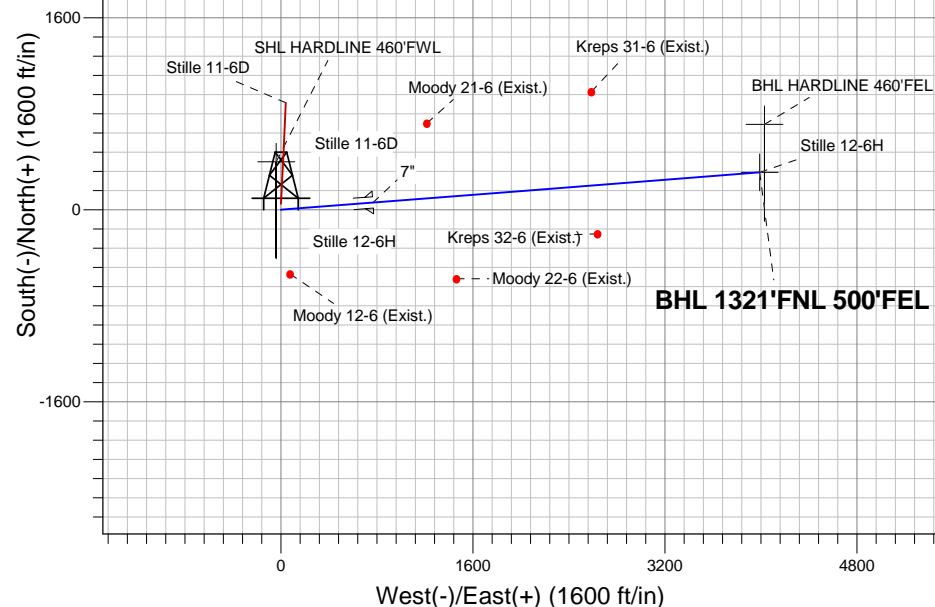
Magnetic Field
Strength: 53196.5snT
Dip Angle: 67.17°
Date: 8/5/2011
Model: IGRF2010

ANNOTATIONS

TVD	MD	Annotation
6149.8	6149.8	KOP
6913.7	7354.5	End of Build

Stille NW-6 Pad Sec.6-T6N-R64W
Stille 12-6H
Plan #1 (8-5-11)
11:35, August 26 2011

SHL 1550'FNL, 500'FWL



ENSIGN
Directional

SECTION DETAILS

Sec	MD	Inc	Azi	TVD	+N/-S	+E/-W	DLeg	TFace	VSec	Target
1	0.0	0.00	0.00	0.0	0.0	0.0	0.00	0.00	0.0	
2	6149.8	0.00	0.00	6149.8	0.0	0.0	0.00	0.00	0.0	
3	7354.5	90.35	85.54	6913.7	59.7	766.3	7.50	85.54	768.6	
4	10585.9	90.35	85.54	6894.0	310.9	3987.9	0.00	0.00	4000.0	BHL 1321'FNL 500'FEL

