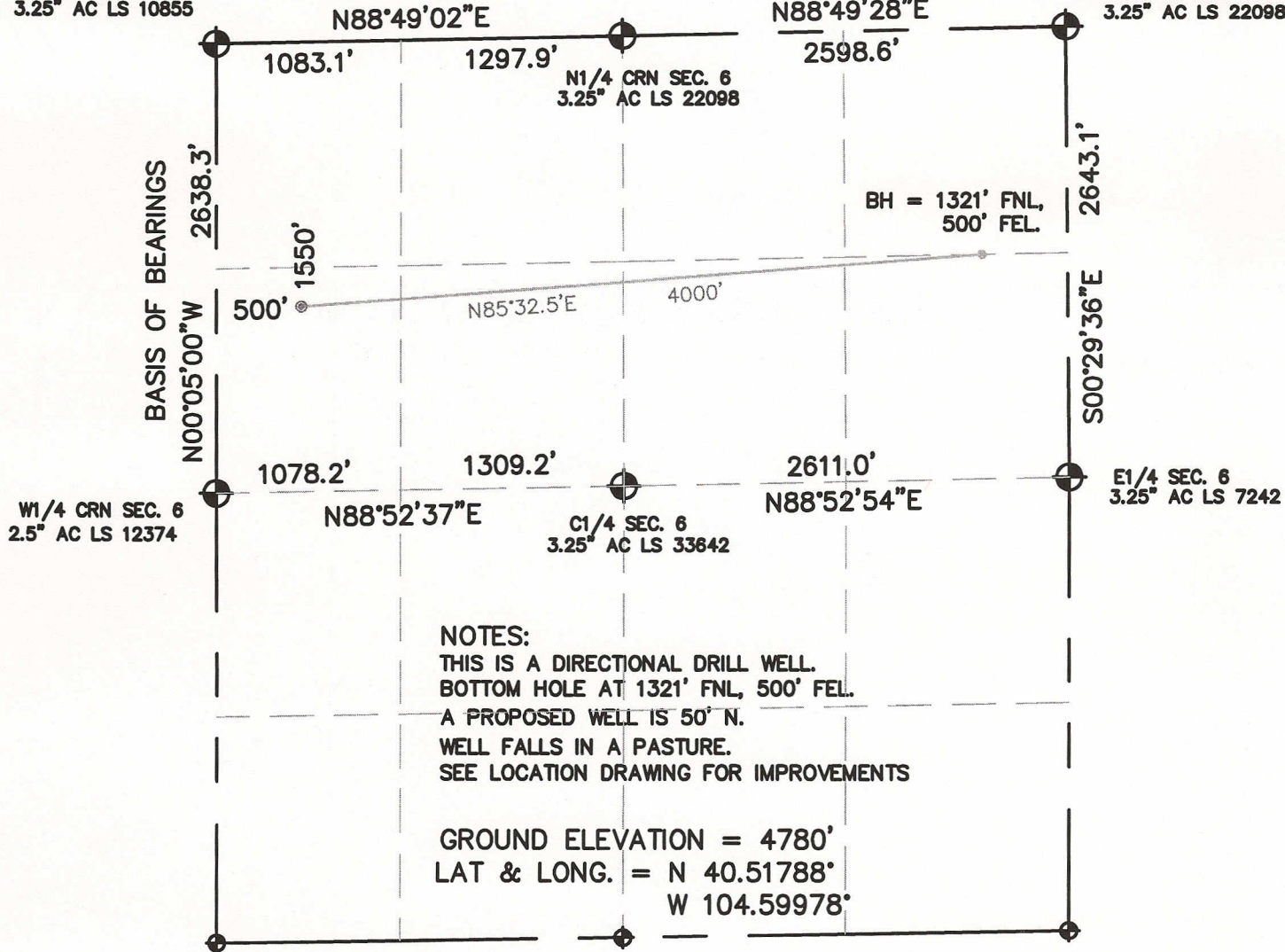


WELL LOCATION CERTIFICATE

SECTION 6, TOWNSHIP 6 NORTH, RANGE 64 WEST, 6TH P.M.

NW CRN SEC. 6
3.25" AC LS 10855

NE CRN SEC. 6
3.25" AC LS 22098



NOTES:

THIS IS A DIRECTIONAL DRILL WELL.
BOTTOM HOLE AT 1321' FNL, 500' FEL.
A PROPOSED WELL IS 50' N.
WELL FALLS IN A PASTURE.
SEE LOCATION DRAWING FOR IMPROVEMENTS

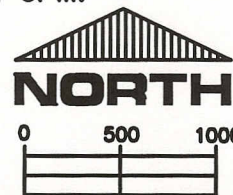
GROUND ELEVATION = 4780'
LAT & LONG. = N 40.51788°
W 104.59978°

I HEREBY STATE TO PETROLEUM DEV. CORP. THAT THE SURFACE LOCATION FOR THE WELL STILLE 12-6H IS LOCATED 1550' FNL & 500' FWL, SEC. 6, T6N, R64W, 6PM.



LEGEND

- = FOUND MONUMENT
- = PROPOSED WELL
- = BOTTOM HOLE



SCALE 1" = 1000'

ELEVATION SOURCE = USGS 7.5' QUAD.MAP CONTOURS
NGVD 1929 DATUM.

LAT. & LONG. ARE DIFFERENTIALLY CORRECTED (NAD'83)
USING (DGPS) WITH (PDOP) VALUE OF 2.6.

SHOWN DISTANCES ARE FIELD MEASURED - EXTERIOR SECTION LINES
ARE DRAWN TO SCALE (BEST APPROX. OR FOUND MONUMENT).

DISTANCES TO WELL SHOWN PERPENDICULAR
TO SECTION LINES.

THOMAS G. CARLSON, PLS 24657
HORSESHOE SURVEYING, LLC

THIS IS NOT A MONUMENTED BOUNDARY SURVEY, IT IS ONLY A
DRAWING INTENDED TO DEPICT THE WELL LOCATION TO SECTION LINES.

PREPARED BY:		HORSESHOE SURVEYING, LLC PO BOX 150458 LAKEWOOD, CO 80215 (720)872-0196		WELL NAME: STILLE 12-6H	
DRAWING DATE: 8-2-11				LOCATION: WELD COUNTY, CO NW1/4, SEC. 6, T6N, R64W, 6TH P.M.	
FIELD DATE: 7-30-11	BY: TGC	CHKD:		JOB NO.	SHEET NO. 1 OF 1