

Schlumberger

PERFORM - Drilling Mechanics

2 in / hr Time Based

Real Time Log

Company: ExxonMobil Oil Corporation

Well: Freedom Unit 197 33B10

Field: Piceance Creek

County: Rio Blanco

State: Colorado

Country: U.S.A

APIN: 051031142300

Rig Name: H & P 321

Rig Type: Flex 4

Section: 33

Township: 1S

Range: 97W

FL: NAD 27 Colorado State Planes, Northern Zone

FL1: X: 1219843.996 ft Latitude: 39° 55' 16.72" N

FL2: Y: 226431.423 ft Longitude: 108° 16' 54.96" W

Log Measured From - Drill Floor: 6476.0 ft

Ground Level: 6446.0 ft

Permanent Datum - Mean Sea Level

Acquisition Dates: 13 Apr 10 to 07 Aug 10

Print Interval: 4/13/2010 6:16:51 AM to 8/7/2010 1:13:05 PM

Index Types: Time

Index Scales: 2" / 3600 secs

Depth Source: Driller's Depth

Depth Sensor: 3rd Party Depth

Conveyance: Drill Pipe

Print Type: Final

Spud Date: 4/13/2010

Other Services:

Directional Drilling



Disclaimer

THE USE OF AND RELIANCE UPON THIS RECORDED-DATA BY THE HEREIN NAMED COMPANY (AND ANY OF ITS AFFILIATES, PARTNERS, REPRESENTATIVES, AGENTS, CONSULTANTS AND EMPLOYEES) IS SUBJECT TO THE TERMS AND CONDITIONS AGREED UPON BETWEEN SCHLUMBERGER AND THE COMPANY, INCLUDING: (a) RESTRICTIONS ON USE OF THE RECORDED-DATA; (b) DISCLAIMERS AND WAIVERS OF WARRANTIES AND REPRESENTATIONS REGARDING COMPANY'S USE AND RELIANCE UPON THE RECORDED-DATA; AND (c) CUSTOMER'S FULL AND SOLE RESPONSIBILITY FOR ANY INFERENCE DRAWN OR DECISION MADE IN CONNECTION WITH THE USE OF THIS RECORDED-DATA.

Contents

- 1. Header
- 2. Disclaimer
- 3. Contents
- 4. Run001 PERFORM - Drilling Mechanics
 - 4.1 Software Version
 - 4.2 Pass Summary
 - 4.3 Log (PERFORM - Drilling Mechanics)
- 5. Run 2 PERFORM - Drilling Mechanics
 - 5.1 Software Version
 - 5.2 Pass Summary
 - 5.3 Log (PERFORM - Drilling Mechanics)
- 6. Tail

--	--

Run001

PERFORM - Drilling Mechanics

Software Version

Acquisition System		Version	
MaxWell		1.2.8706.0	
Framework Patch		FWK-BGC-20091125-1.2.8706.1057	
Application Patch		APL-SRPC-DnM-1.2.8706.1045	
Tool Elements	Description	Software Version	Firmware Version
DRILLING_SURFACE	DRILLING_SURFACE	1.1.8606.0	

Pass Summary

Run Name	Pass Objective	Direction	Top	Bottom	Acquisition Start Date	Acquisition Start Time
Run001	Drilling	Down	148.33 ft	4123.42 ft	13-Apr-2010	06:16:51

All depths are referenced to toolstring zero

Log

Description: TeleScope + ARC Drilling Mechanics Time RT Format: Log (PERFORM - Drilling Mechanics) Index Scale: 2 in per 3600 s Index Type: Time
Creation Date: 07-Aug-2010 15:07:02

AJAM	TELE825:TELE825	ACQ - RT
BLKP	DRILLING_SURFACE	ACQ - RT
CRPM	TELE825:TELE825	ACQ - RT
DEPTH	DnMWorkflow	ACQ - RT
GENERIC_01	DRILLING_SURFACE	ACQ - RT
HKLA	DRILLING_SURFACE	ACQ - RT
OBTM	DnMWorkflow	ACQ - RT
ROP	DRILLING_SURFACE	ACQ - RT
SHKPK	TELE825:TELE825	ACQ - RT
SHKRSK	TELE825:TELE825	ACQ - RT
SPPA	DRILLING_SURFACE	ACQ - RT
STICK	TELE825:TELE825	ACQ - RT
STOR	DRILLING_SURFACE	ACQ - RT
SWOB	DRILLING_SURFACE	ACQ - RT
TEMP_DNI	TELE825:TELE825	ACQ - RT
TFLO	DRILLING_SURFACE	ACQ - RT
TRPM	TELE825:TELE825	ACQ - RT
VIB_LAT	TELE825:TELE825	ACQ - RT
VIB_X	TELE825:TELE825	ACQ - RT



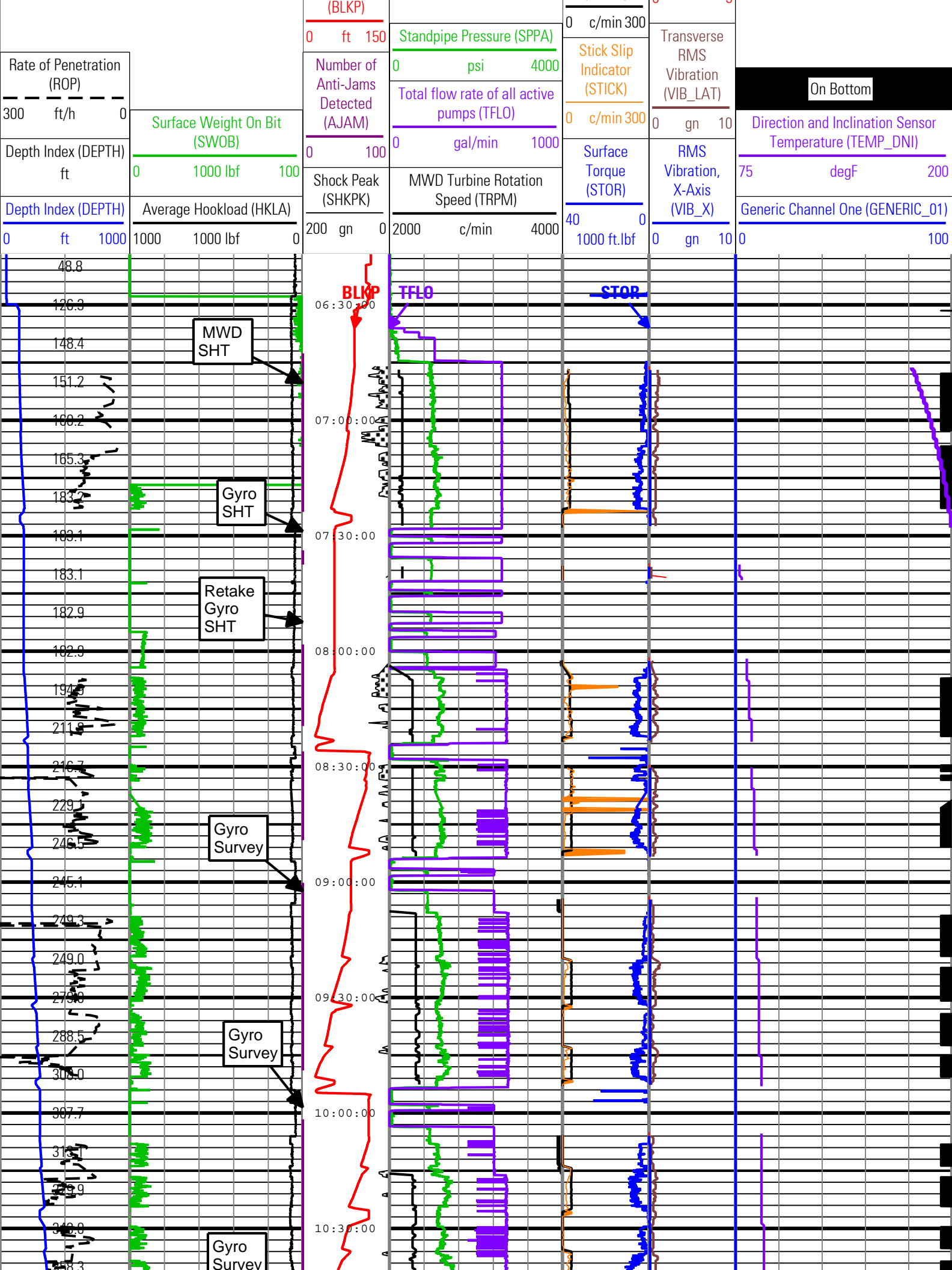
Height of
block above
rig floor

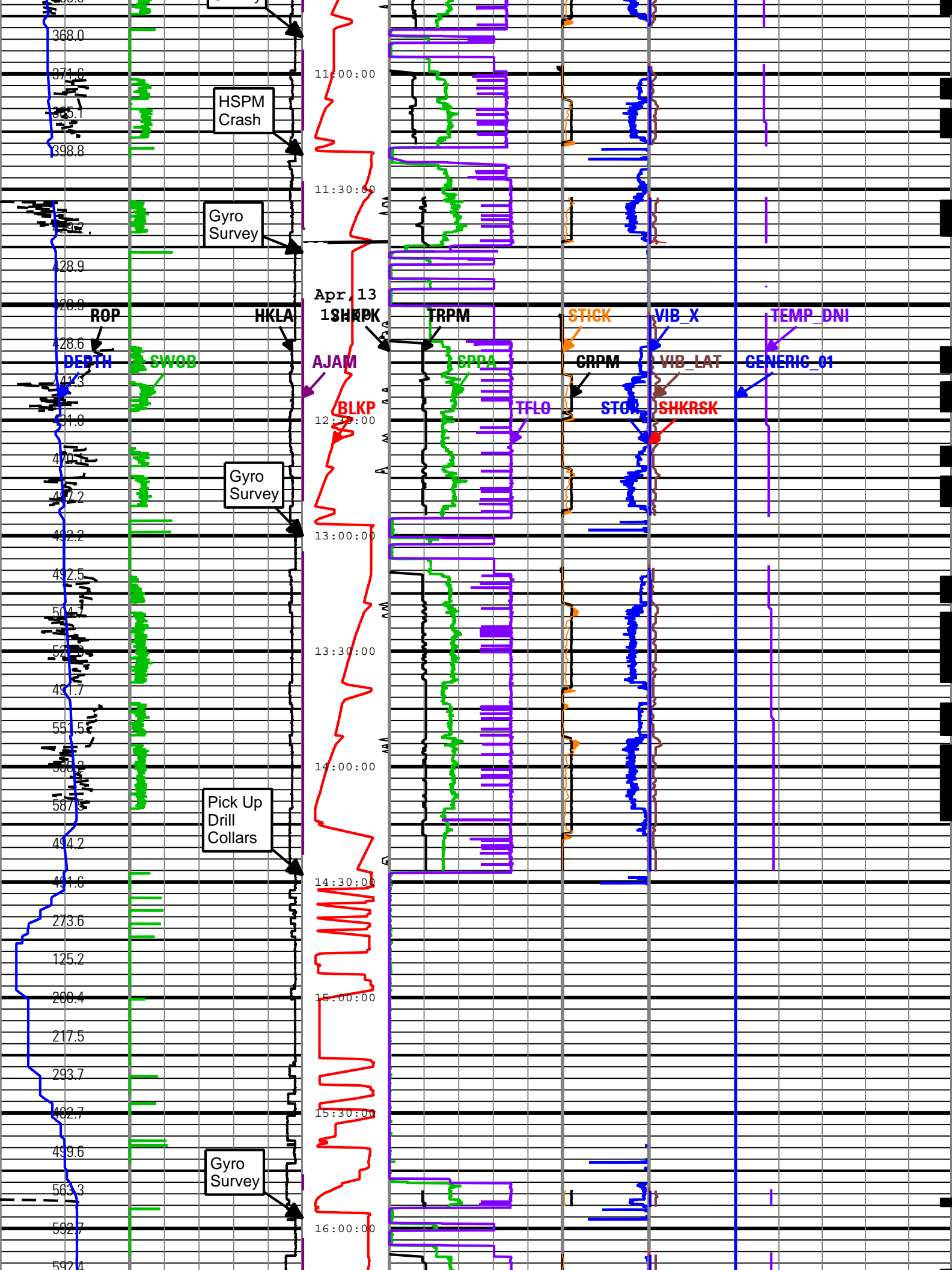


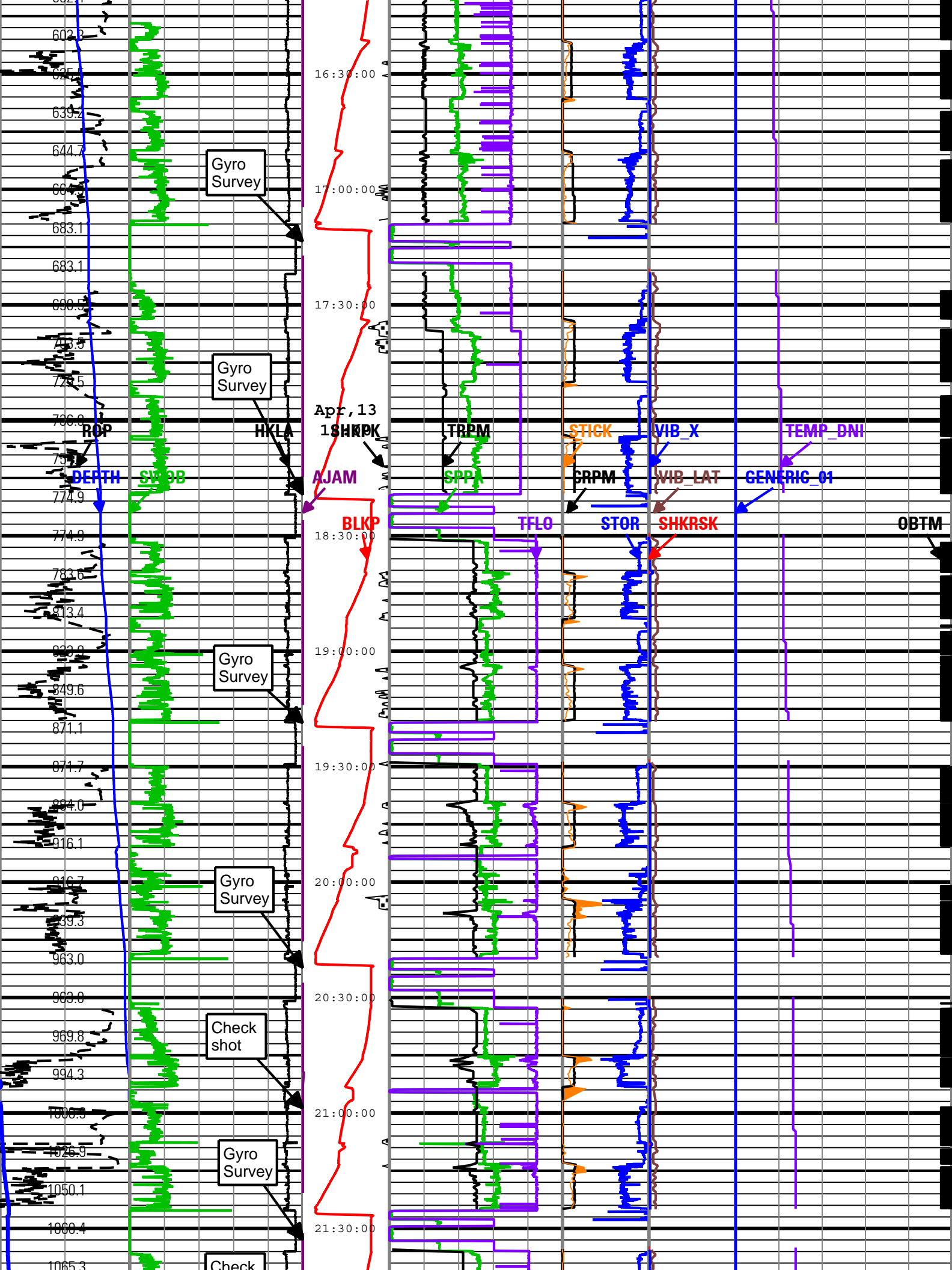
Collar
Rotational
Speed
(CRPM)

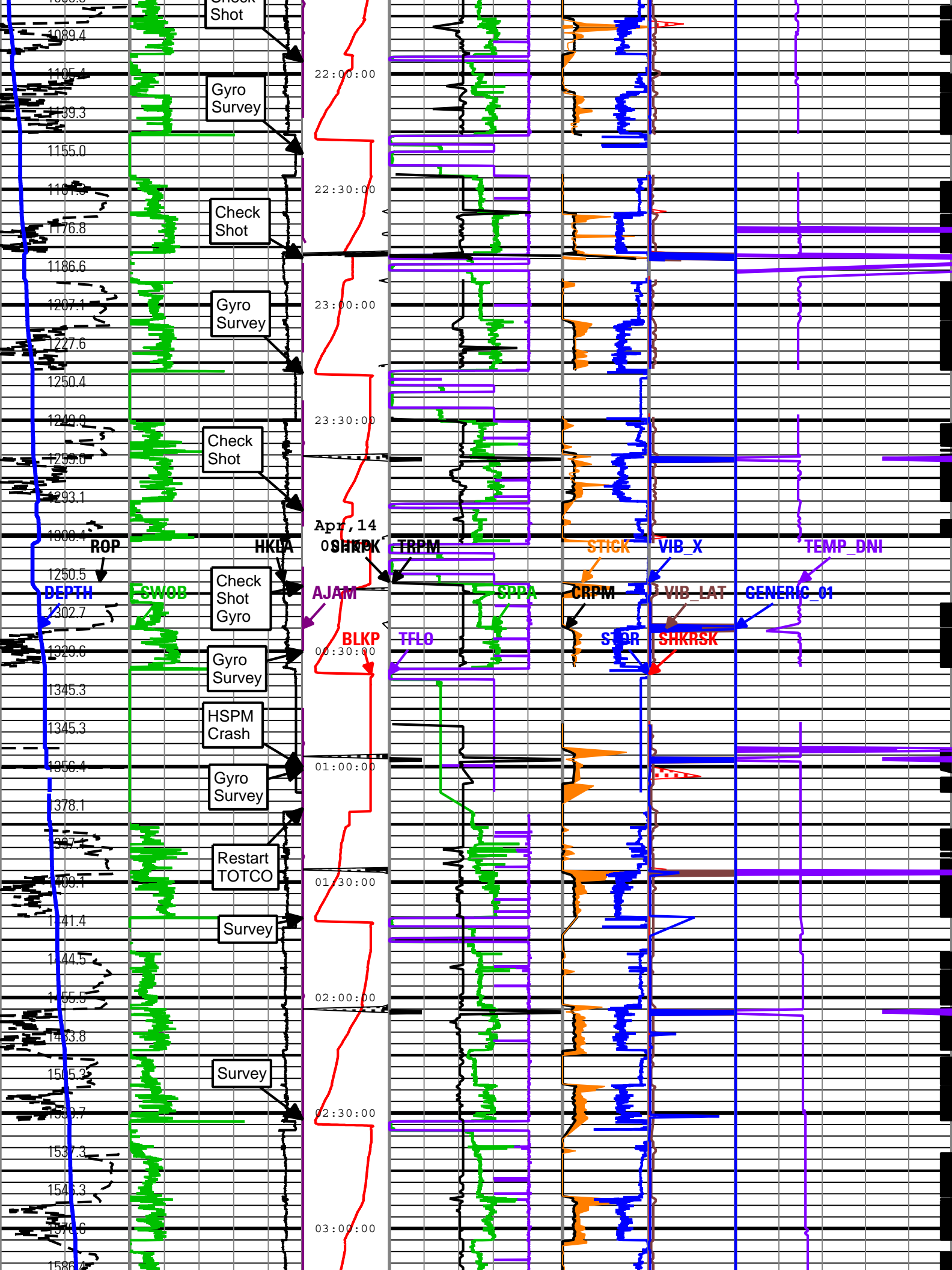


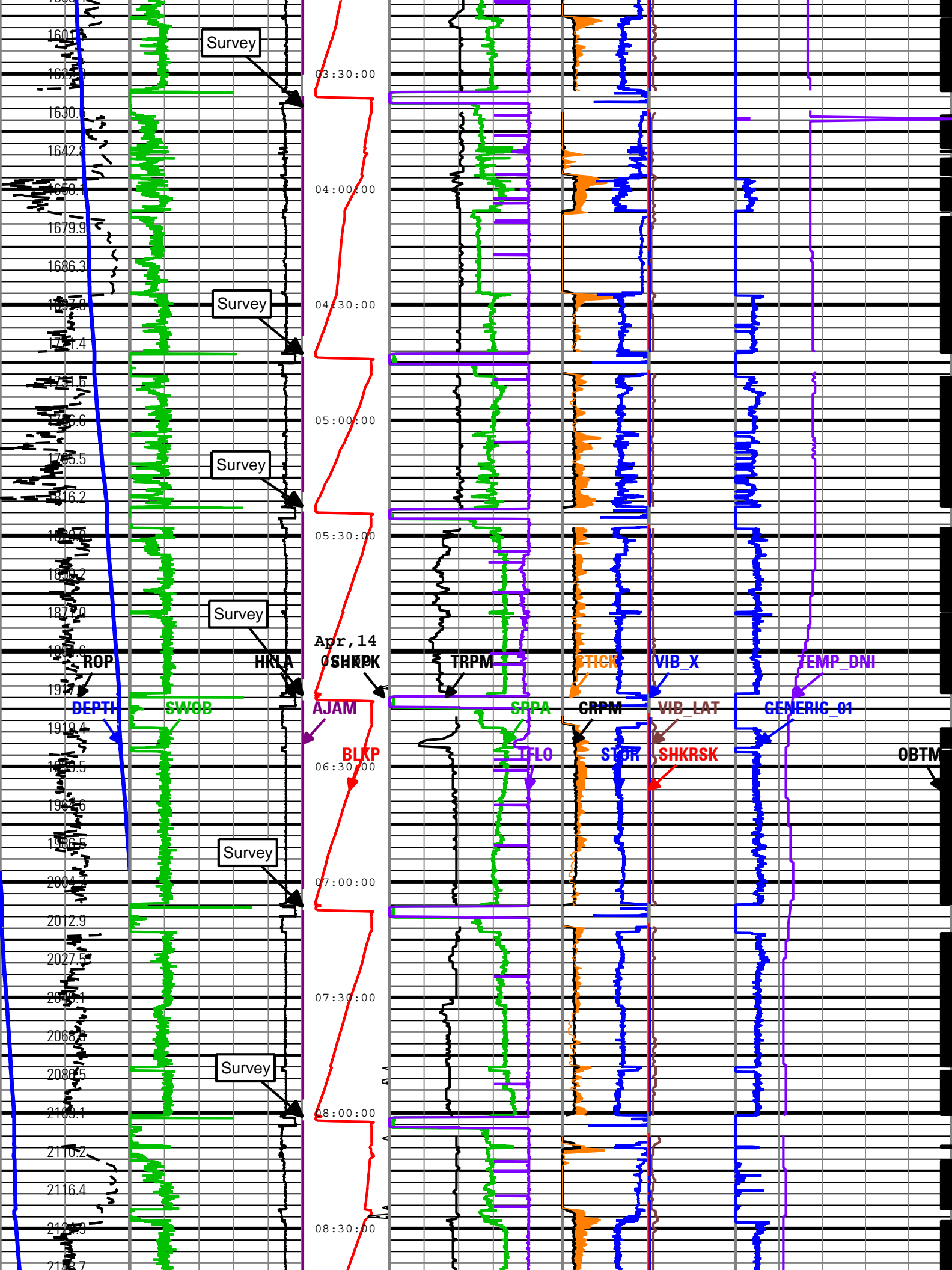
Shock Risk
(SHKRSK)
0 5

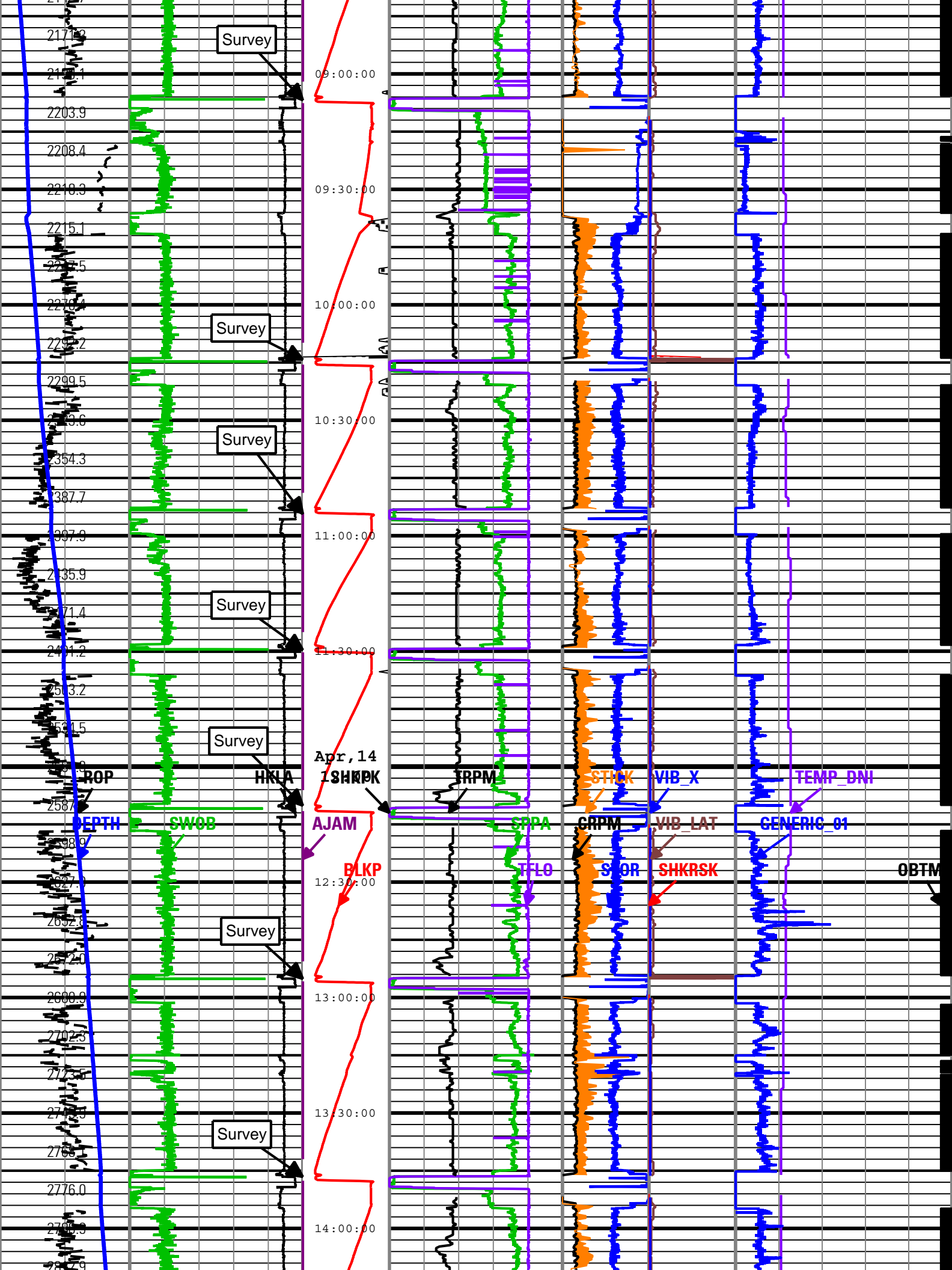


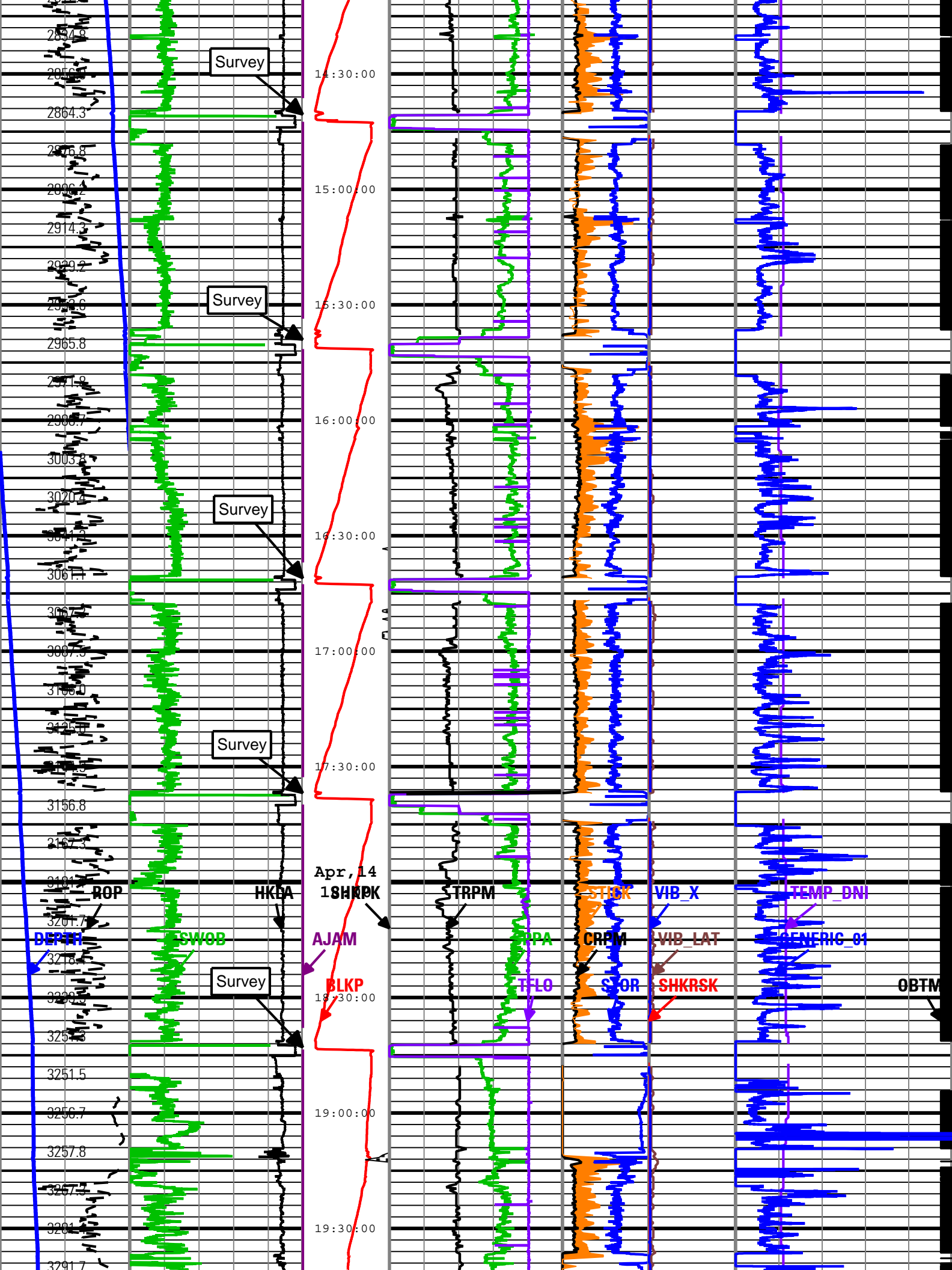


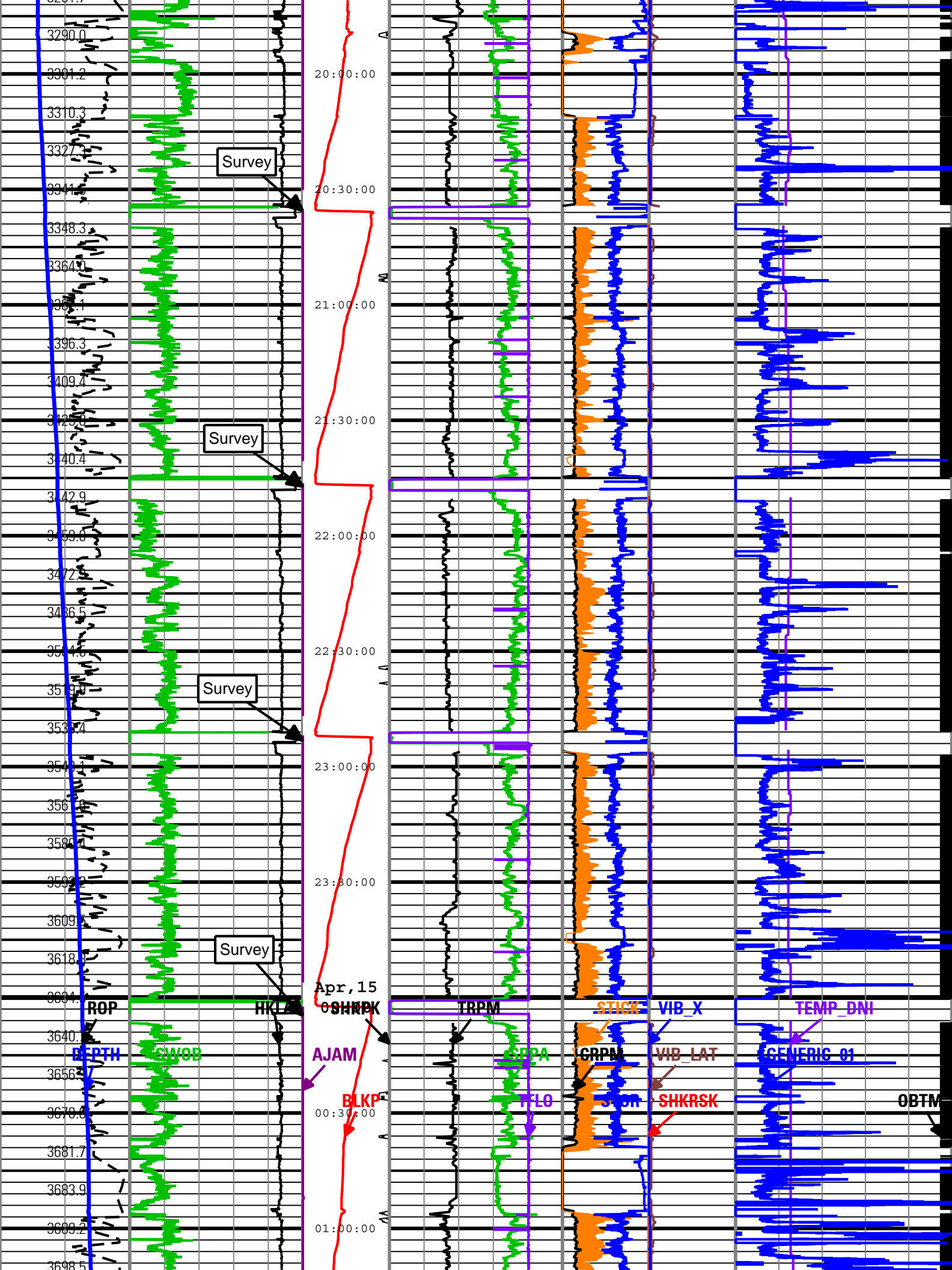


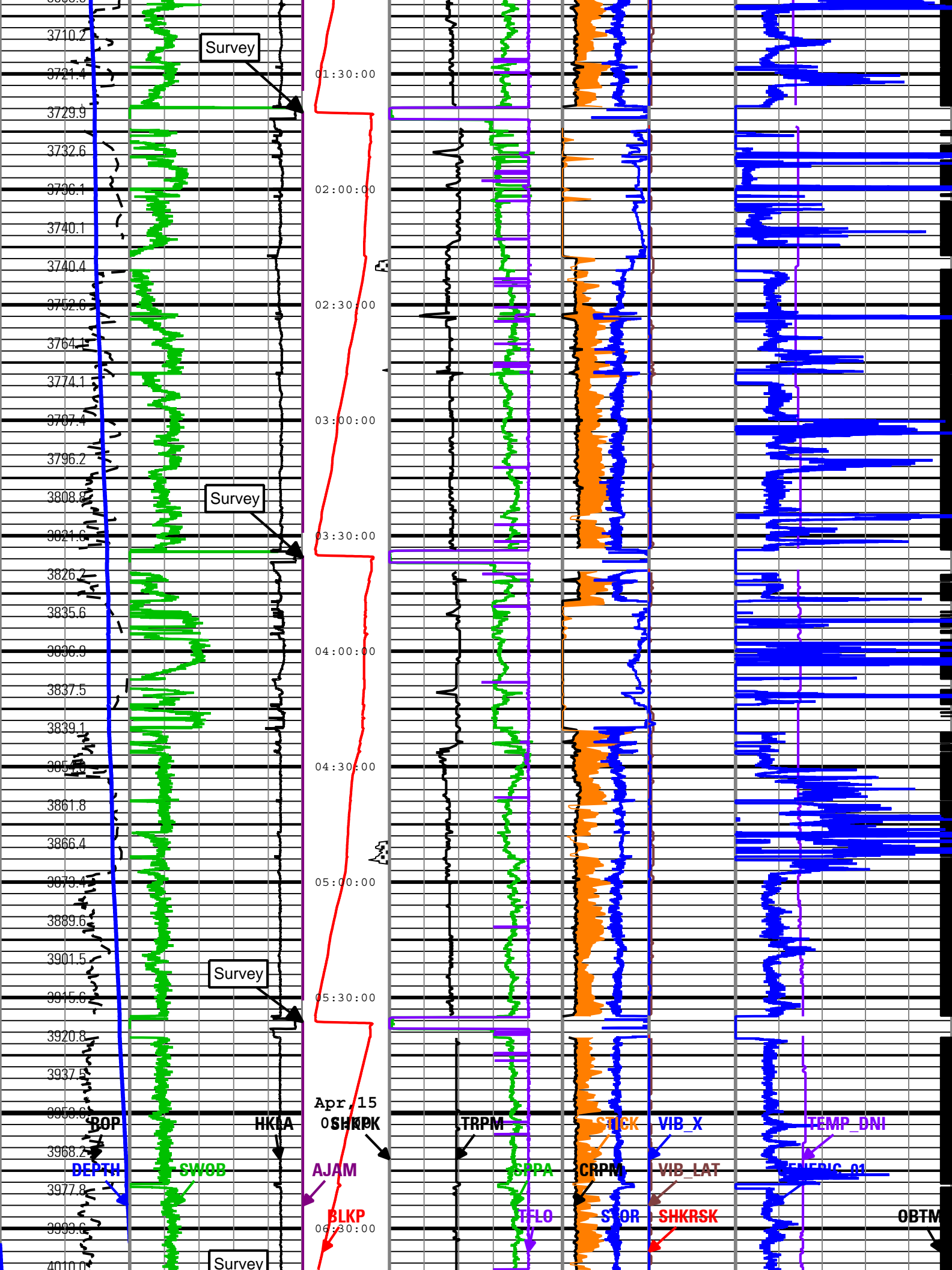


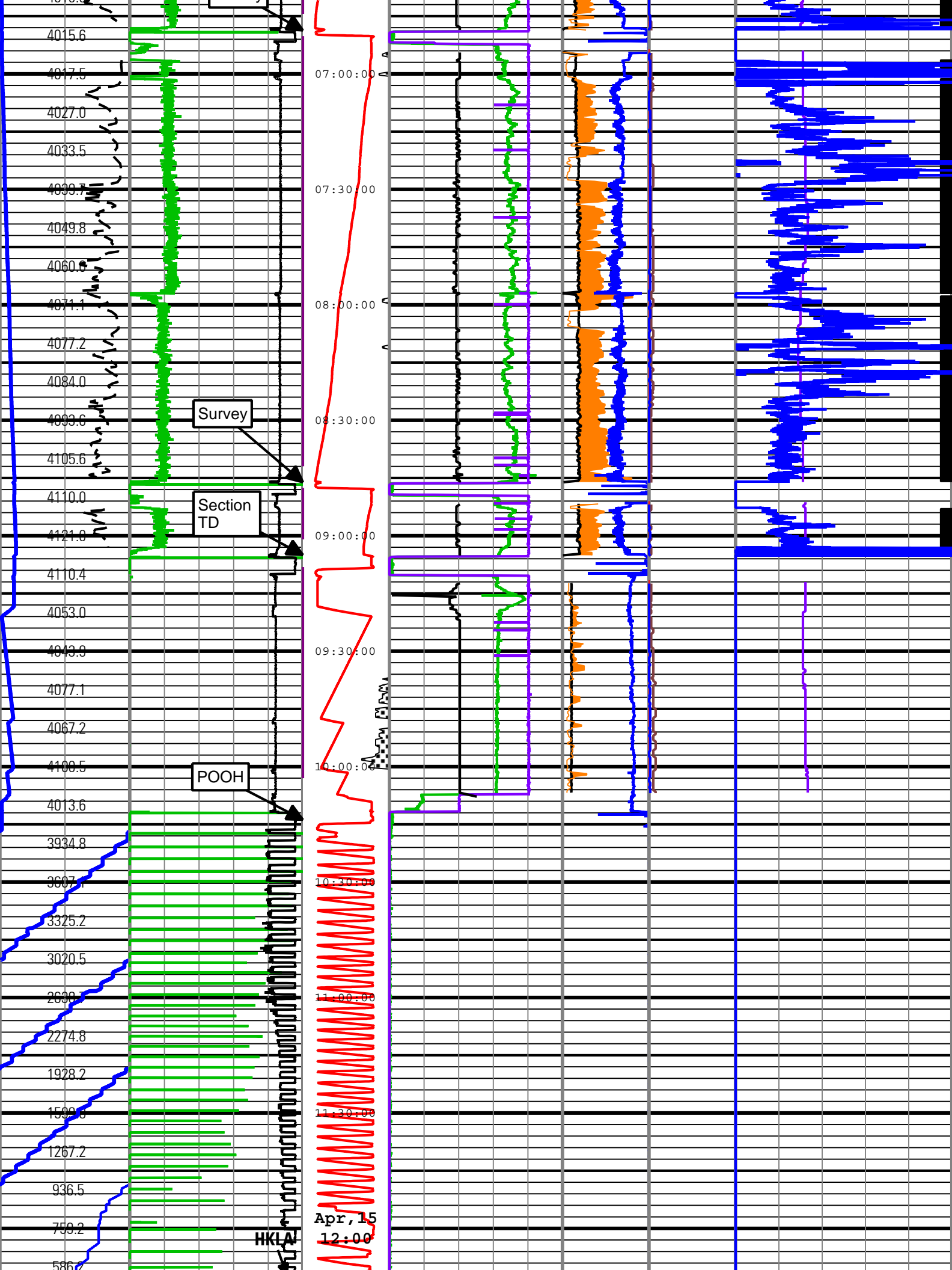


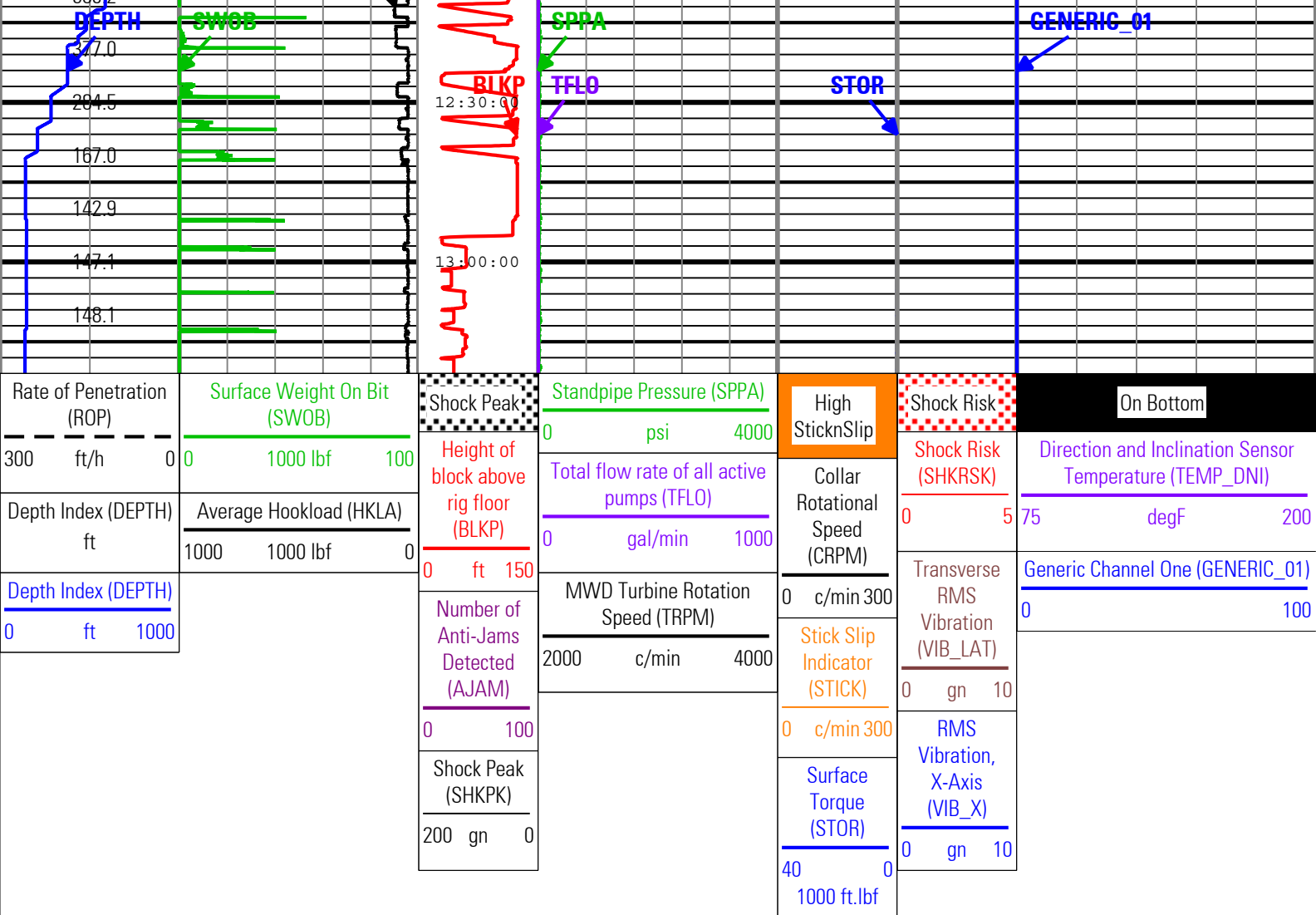












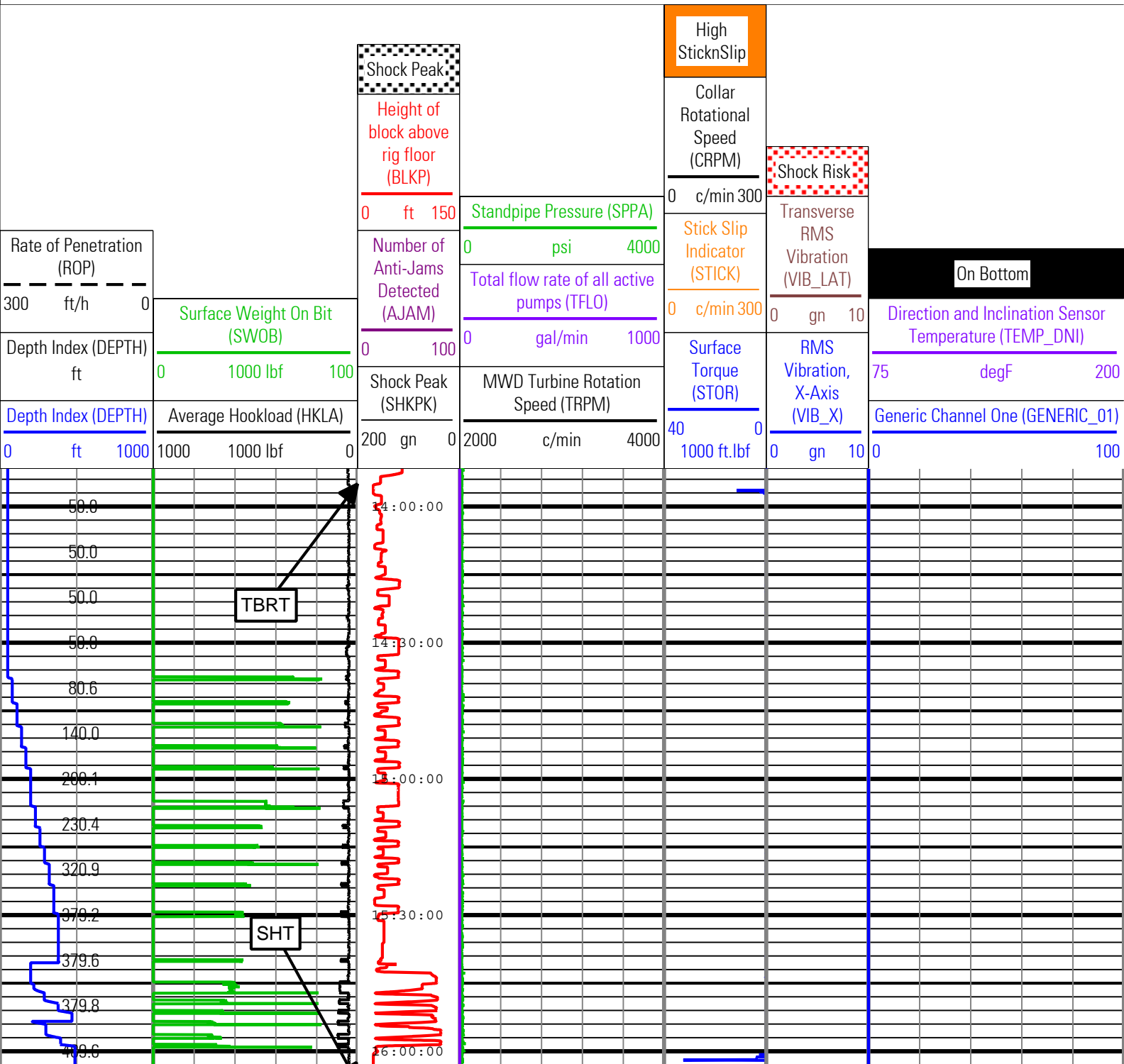
Description: TeleScope + ARC Drilling Mechanics Time RT Format: Log (PERFORM - Drilling Mechanics) Index Scale: 2 in per 3600 s Index Type: Time
Creation Date: 07-Aug-2010 15:07:02

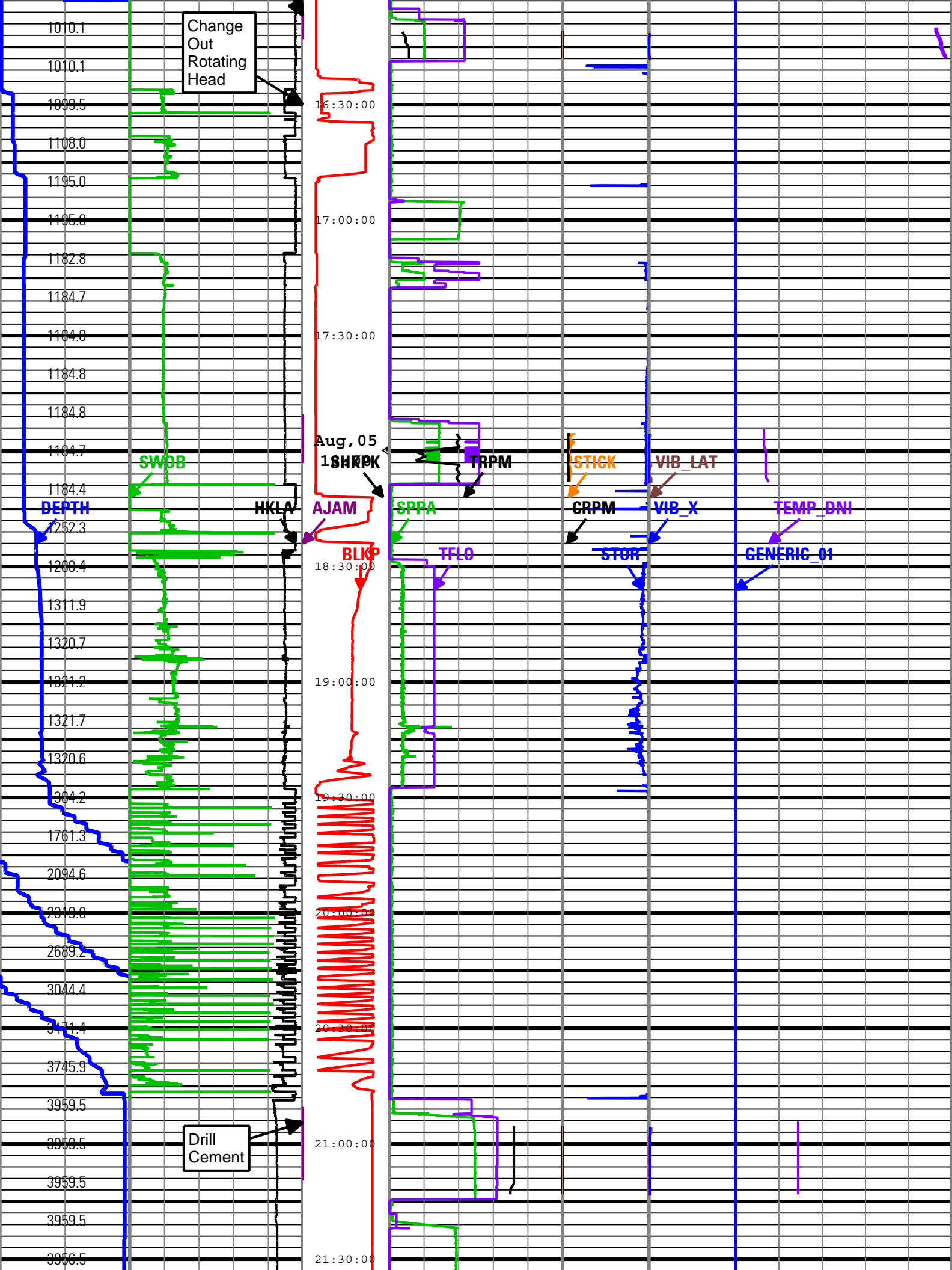
Run 2						
PERFORM - Drilling Mechanics						
Software Version						
Acquisition System				Version		
MaxWell				1.2.8706.0		
Framework Patch				FWK-BGC-20091125-1.2.8706.1057		
Application Patch				APL-SRPC-DnM-1.2.8706.1045		
Tool Elements		Description		Software Version		Firmware Version
DRILLING_SURFACE		DRILLING_SURFACE		1.2.8706.1057		
Pass Summary						
Run Name	Pass Objective	Direction	Top	Bottom	Acquisition Start Date	Acquisition Start Time
Run 2	Drilling	Down	4123.17 ft	6340.83 ft	05-Aug-2010	13:51:41
All depths are referenced to toolstring zero						
Log		Run 2: Drilling 6F98923B-7729-4017-A1B7-863E9EA6371D				

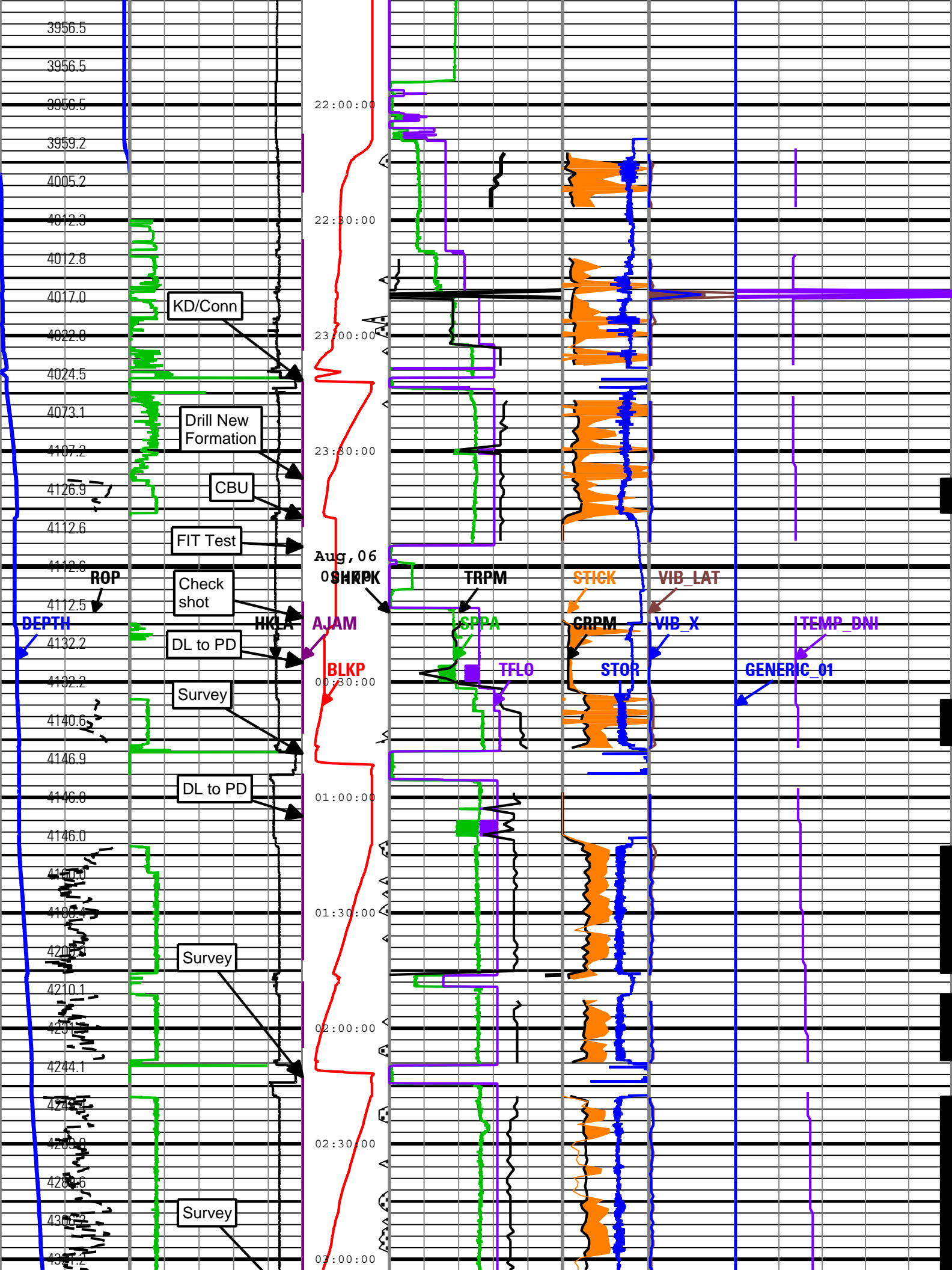
Description: TeleScope + ARC Drilling Mechanics Time RT Format: Log (PERFORM - Drilling Mechanics) Index Scale: 2 in per 3600 s Index Type: Time
Creation Date: 07-Aug-2010 15:07:11

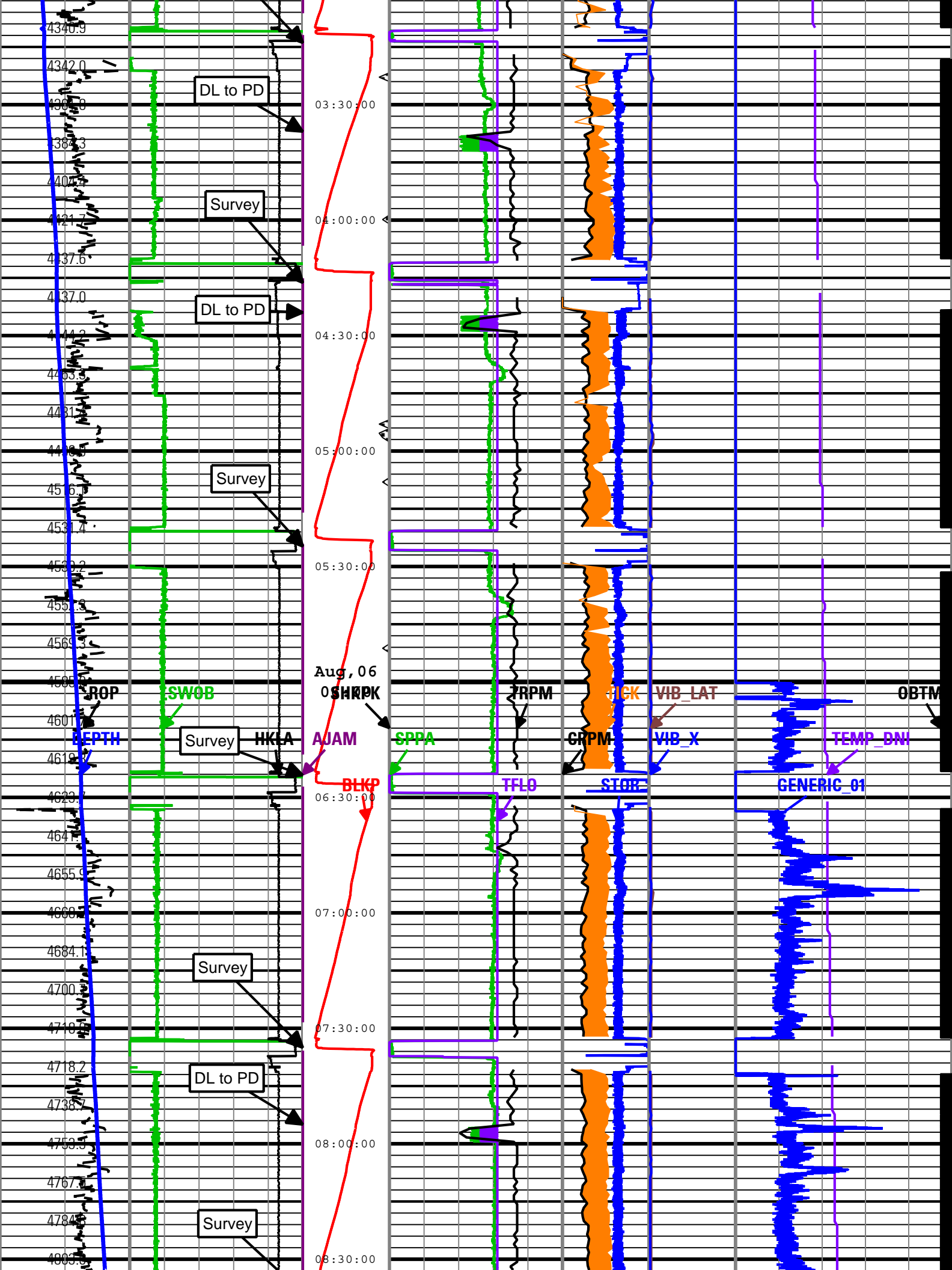
AJAM TELE675:TELE675 ACQ - RT
BLKP DRILLING_SURFACE ACQ - RT
CRPM TELE675:TELE675 ACQ - RT
DEPTH DnMWorkflow ACQ - RT

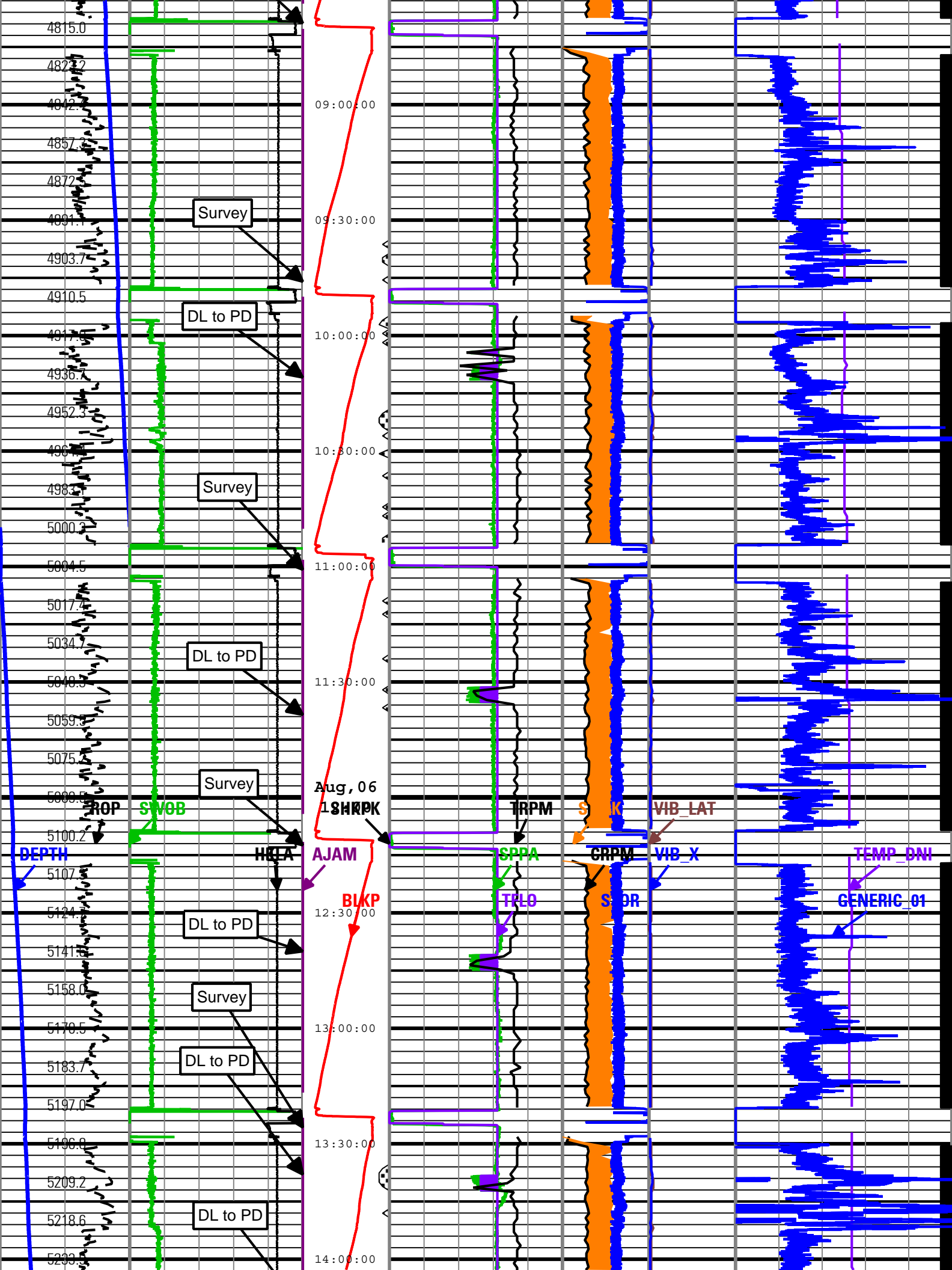
DRILLING_SURFACE	ACQ - RT
DRILLING_SURFACE	ACQ - RT
DnMWorkflow	ACQ - RT
DRILLING_SURFACE	ACQ - RT
TELE675:TELE675	ACQ - RT
DRILLING_SURFACE	ACQ - RT
TELE675:TELE675	ACQ - RT
DRILLING_SURFACE	ACQ - RT
DRILLING_SURFACE	ACQ - RT
TELE675:TELE675	ACQ - RT
DRILLING_SURFACE	ACQ - RT
TELE675:TELE675	ACQ - RT
TELE675:TELE675	ACQ - RT
TELE675:TELE675	ACQ - RT

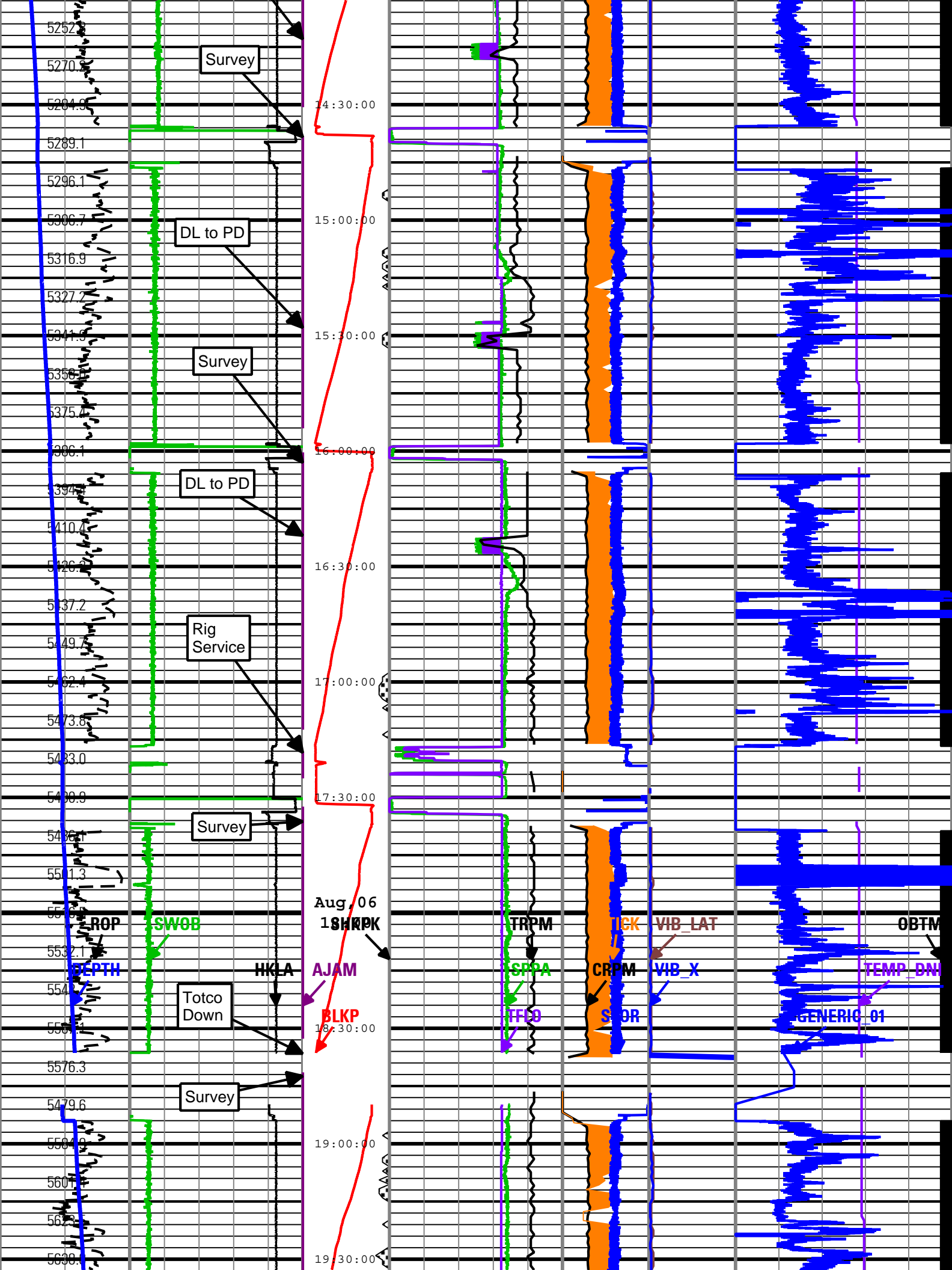


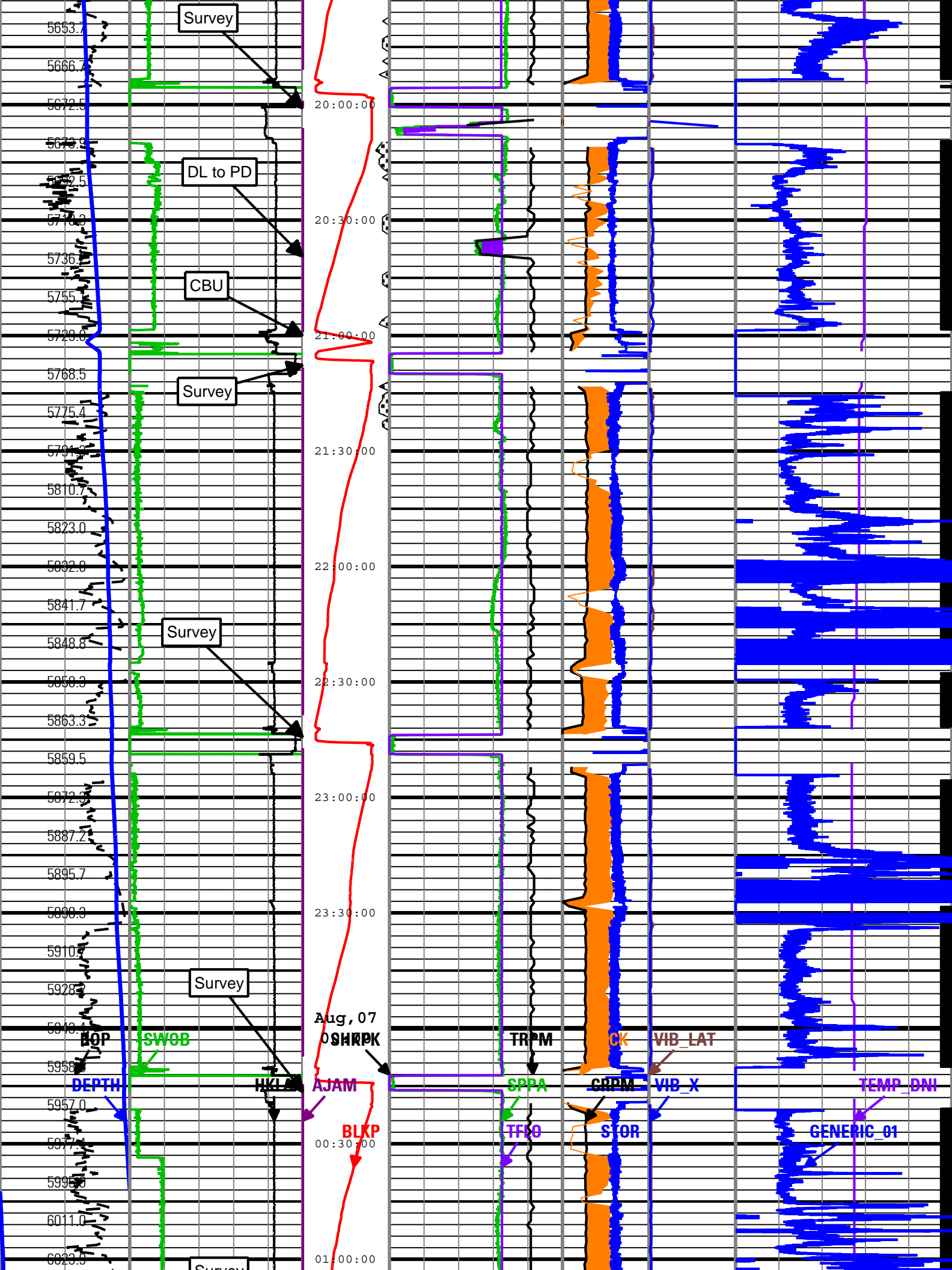


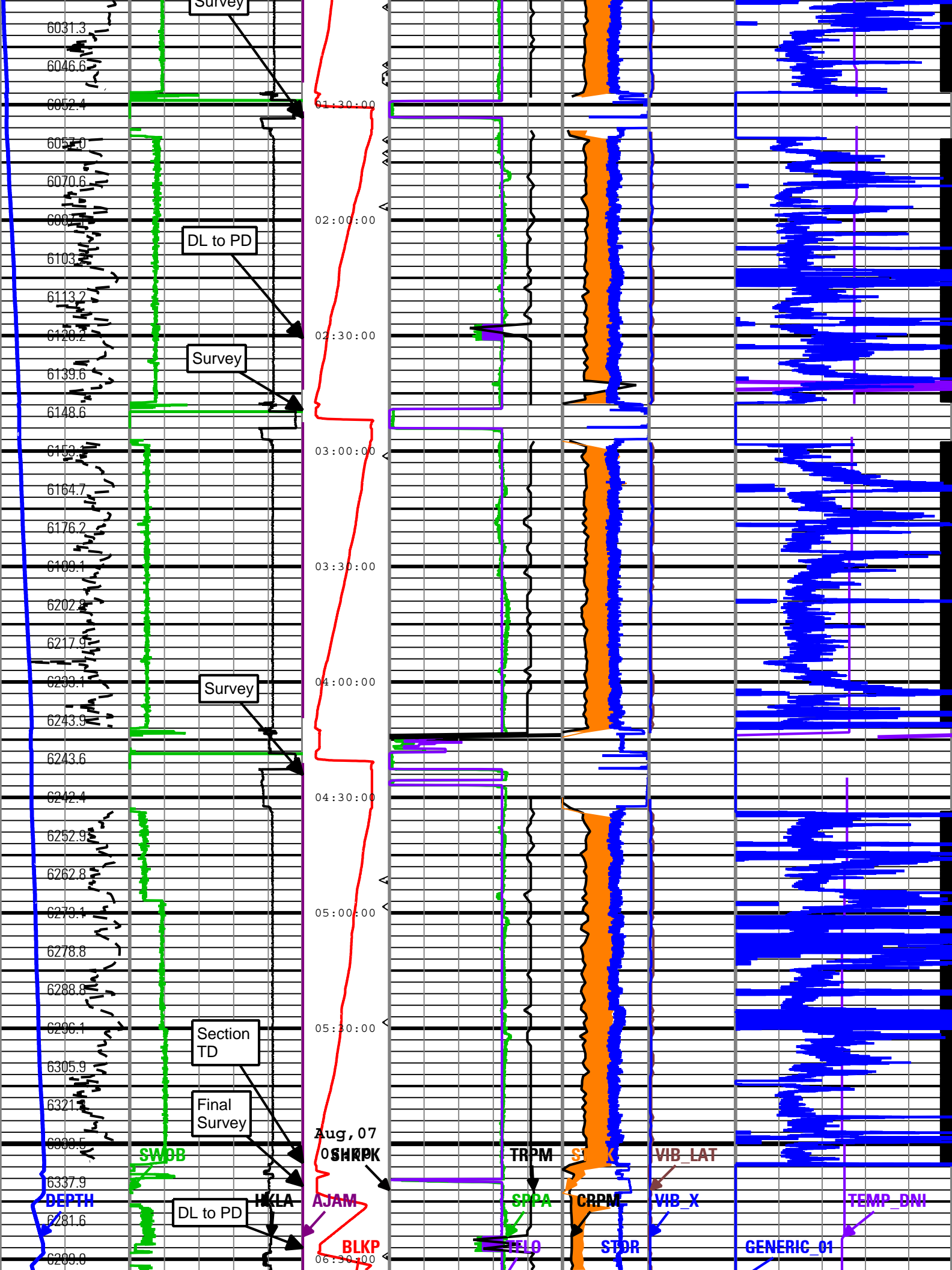


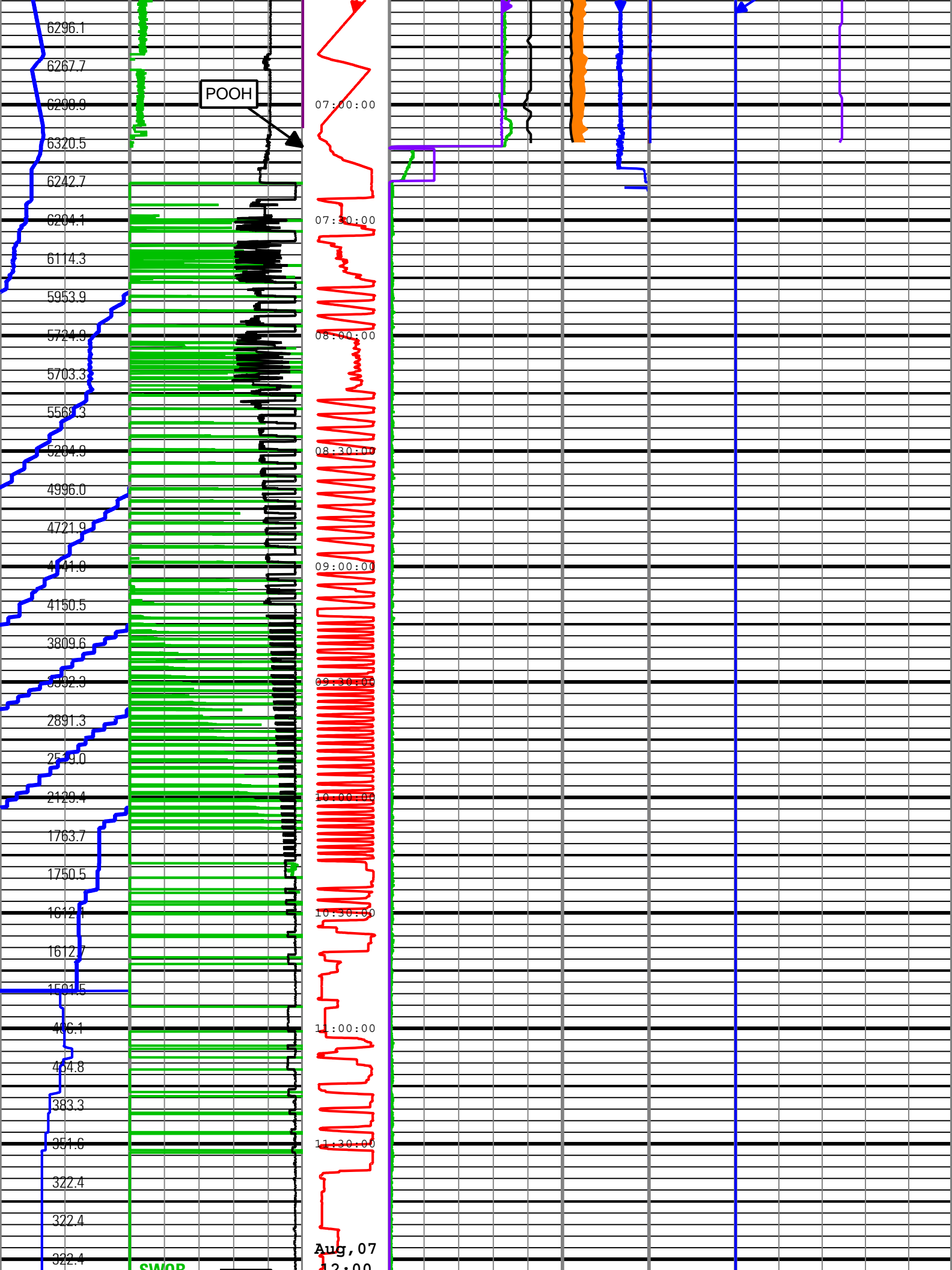


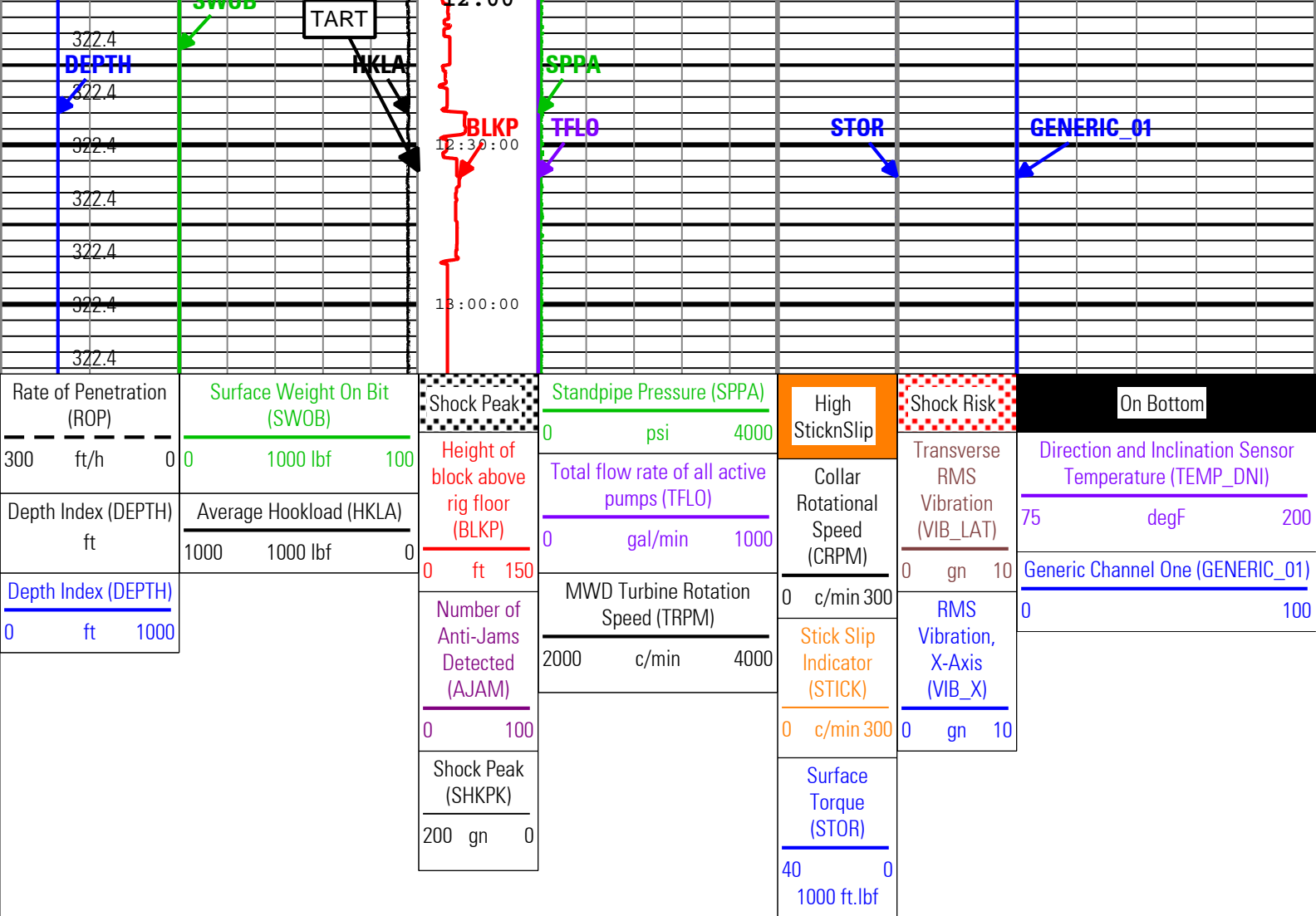












Description: TeleScope + ARC Drilling Mechanics Time RT Format: Log (PERFORM - Drilling Mechanics) Index Scale: 2 in per 3600 s Index Type: Time
 Creation Date: 07-Aug-2010 15:07:11

Company: ExxonMobil Oil Corporation

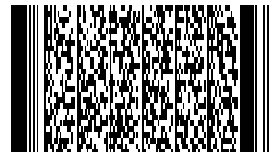
Well: Freedom Unit 197 33B10

Field: Piceance Creek

County: Rio Blanco

State: Colorado

Country: U.S.A



Schlumberger

PERFORM - Drilling Mechanics

2 in / hr Time Based

Real Time Log