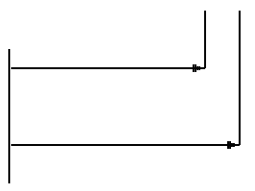



Company: ExxonMobil Oil Corporation		Well: PCU 296 5A5		Field: Piceance Creek		Country: Rio Blanco		State: Colorado		Country: United States	
PERFORM - Drilling Mechanics											
2 in / hr Time Based											
Real Time Log											
Company:		ExxonMobil Oil Corporation									
Well:		PCU 296 5A5									
Field:		Piceance Creek									
County:		Rio Blanco									
State:		Colorado									
Country:		United States									
Section:		5		UWID:		0510311244					
Township:		2S		Rig Name:		H&P 321					
Range:		96W		Rig Type:		Land Rig Flex 4					
FL:		NAD 27 Colorado State Planes, Northern Zone									
FL1:		Latitude: 39° 54' 42.907" Y: 222270.00 ft									
FL2:		Longitude: 108° 11' 52.663" X: 1243277.00 ft									
<div>Log Measured From - Drill Floor: 7326.0 ft</div> <div>Ground Level: 7296.0 ft</div> <div></div> <div>Permanent Datum - Mean Sea Level</div>											
Acquisition Dates:		10 Nov 10 to 12 Nov 10		Other Services:							
Print Interval:		11/10/2010 12:34:41 PM to 11/12/2010 10:12:58 AM		Directional Drilling							
Index Types:		Time									
Index Scales:		2" / 3600 secs									
Depth Source:		Driller's Depth									
Depth Sensor:		3rd Party Depth									
Conveyance:		Drill Pipe									
Print Type:		Field									
Spud Date:		14-NOV-2009									

Disclaimer

THE USE OF AND RELIANCE UPON THIS RECORDED-DATA BY THE HEREIN NAMED COMPANY (AND ANY OF ITS AFFILIATES, PARTNERS, REPRESENTATIVES, AGENTS, CONSULTANTS AND EMPLOYEES) IS SUBJECT TO THE TERMS AND CONDITIONS AGREED UPON BETWEEN SCHLUMBERGER AND THE COMPANY, INCLUDING: (a) RESTRICTIONS ON USE OF THE RECORDED-DATA; (b) DISCLAIMERS AND WAIVERS OF WARRANTIES AND REPRESENTATIONS REGARDING COMPANY'S USE AND RELIANCE UPON THE RECORDED-DATA; AND (c) CUSTOMER'S FULL AND SOLE RESPONSIBILITY FOR ANY INFERENCE DRAWN OR DECISION MADE IN CONNECTION WITH THE USE OF THIS RECORDED-DATA.

Content

1. Header	
2. Disclaimer	
3. Contents	
4. Run001	
4.1 Integration Summary	
4.2 Software Version	
4.3 Composite Summary	
4.4 Log (PERFORM - Drilling Mechanics)	
4.5 Parameter Listing	
5. Tail	

<https://www.pearsoncmg.com/api/v1/print/healthcare/9780134478204>

Run001

Integration Summary

Output Channel(s)	Output Description	Input Parameter	Output Value	Unit
-------------------	--------------------	-----------------	--------------	------

Software Version

Acquisition System	Version
MaxWell	2.0.6803.0
Application Patch	SP-20100818-2.0.6803.1108

Tool Elements	Description	Software Version	Firmware Version
DRILLING_SURFACE	DRILLING_SURFACE	2.0.6803.0	

Pass Summary

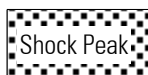
Run Name	Pass Objective	Direction	Start	Stop	Acquisition Start Date	Acquisition Start Time
Run001	TimeLogicalAcq	Down	10-Nov-2010 12:34:41	12-Nov-2010 10:12:58	10-Nov-2010	12:34:41

Log

Run001: TimeLogicalAcq 91899EA1-0923-4C39-A59F-1171A90375AB

Description: TeleScope Drilling Mechanics Time RT Format: Log (PERFORM - Drilling Mechanics) Index Scale: 2 in per 3600 s Index Type: Time Creation Date: 12-Nov-2010 12:19:15

AJAM	TELE675:TELE675	ACQ - RT
BLKP	DRILLING_SURFACE	ACQ - RT
CRPM	TELE675:TELE675	ACQ - RT
DEPTH	DnMWorkflow	ACQ - RT
GENERIC_01	DRILLING_SURFACE	ACQ - RT
HKLA	DRILLING_SURFACE	ACQ - RT
OBTM	DnMWorkflow	ACQ
ROP	DRILLING_SURFACE	ACQ - RT
SHKPK	TELE675:TELE675	ACQ - RT
SPPA	DRILLING_SURFACE	ACQ - RT
STICK	TELE675:TELE675	ACQ - RT
STOR	DRILLING_SURFACE	ACQ - RT
SWOB	DRILLING_SURFACE	ACQ - RT
TEMP_DNI	TELE675:TELE675	ACQ - RT
TFLO	DRILLING_SURFACE	ACQ - RT
TRPM	TELE675:TELE675	ACQ - RT
VIB_LAT	TELE675:TELE675	ACQ - RT
VIB_X	TELE675:TELE675	ACQ - RT

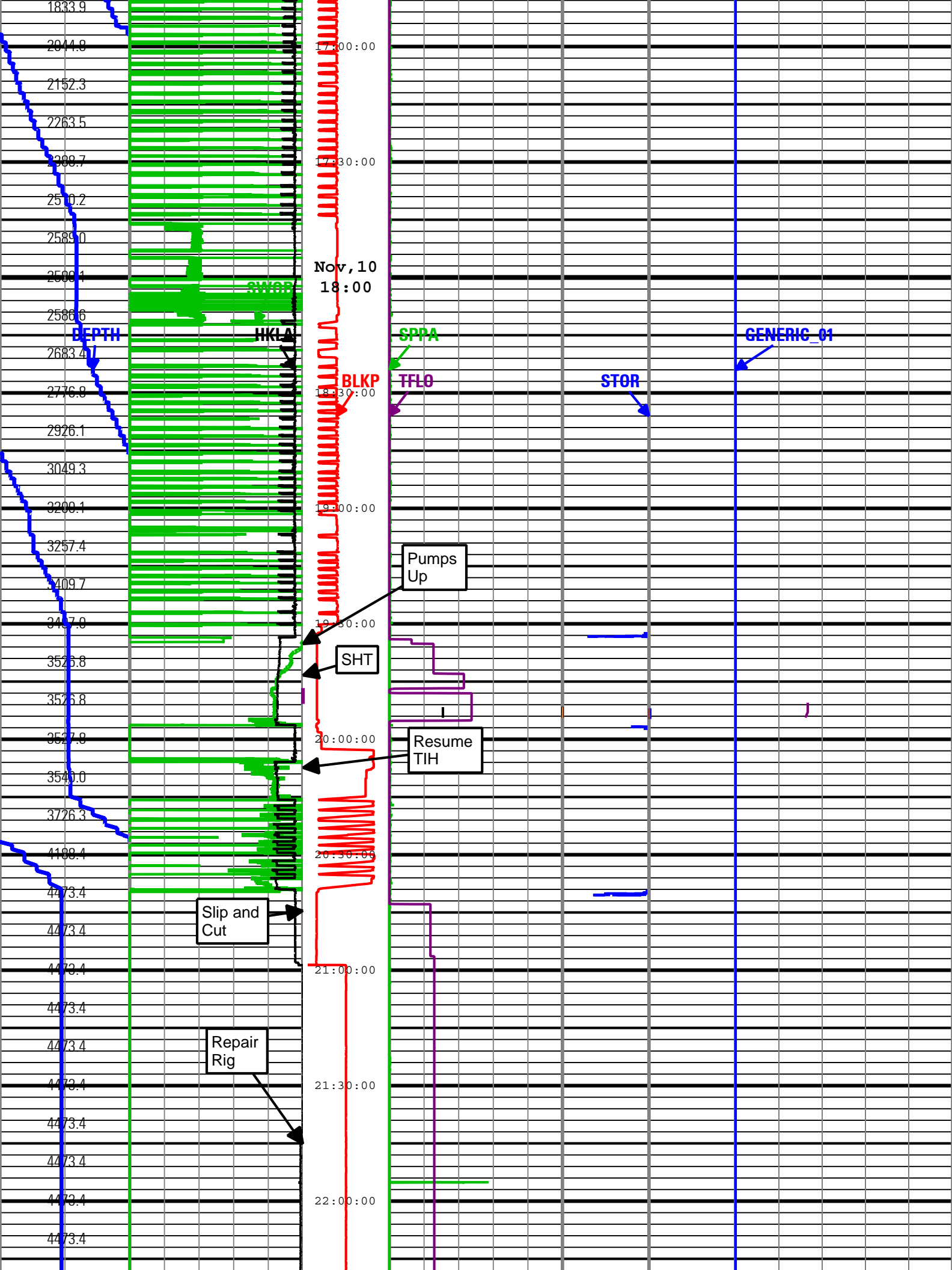


Shock Peak
(SHKPK)
TELE675 RT

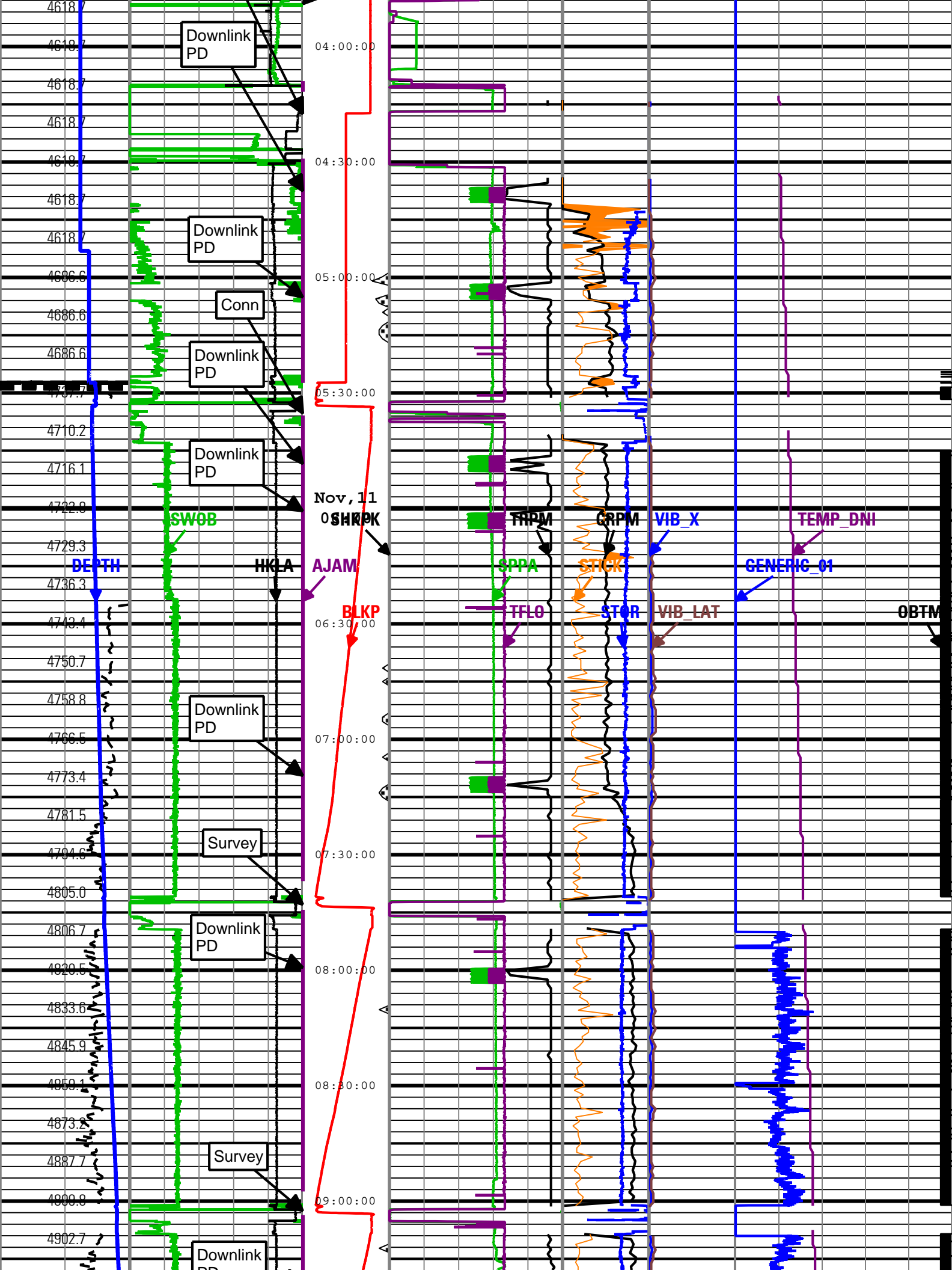
High
SticknSlipCollar
Rotational
Speed
(CRPM)

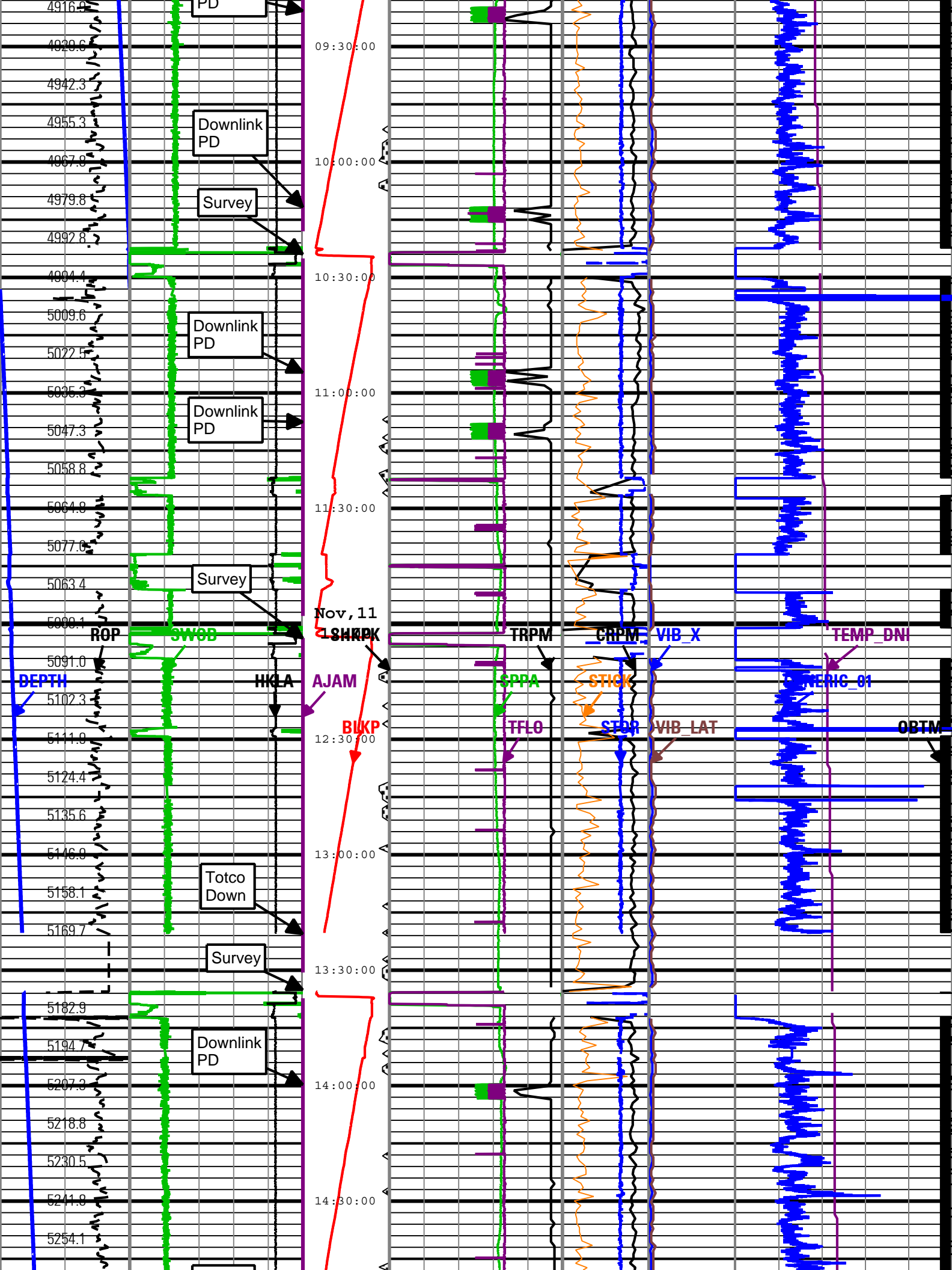
Shock Risk

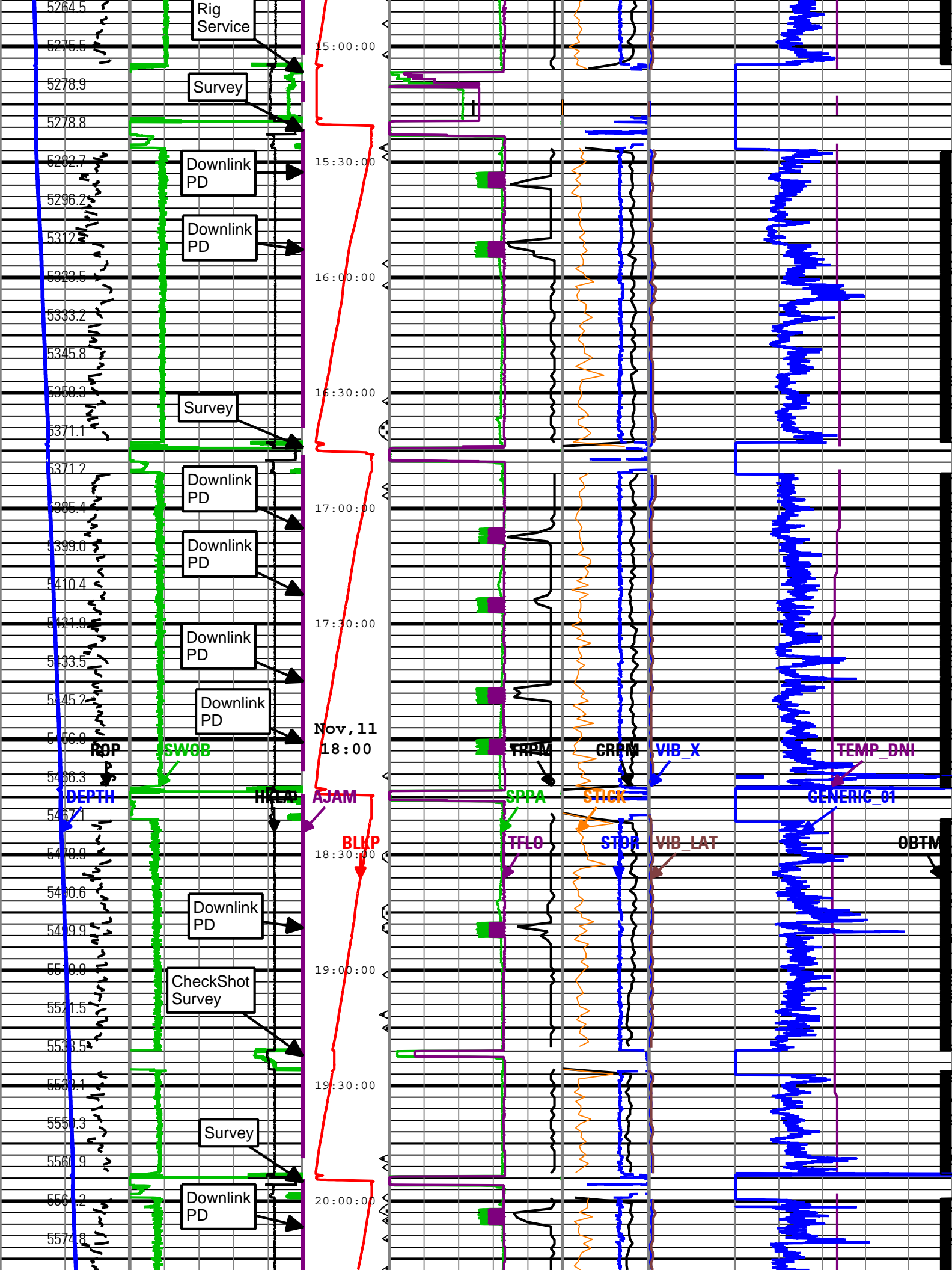
[illegible]

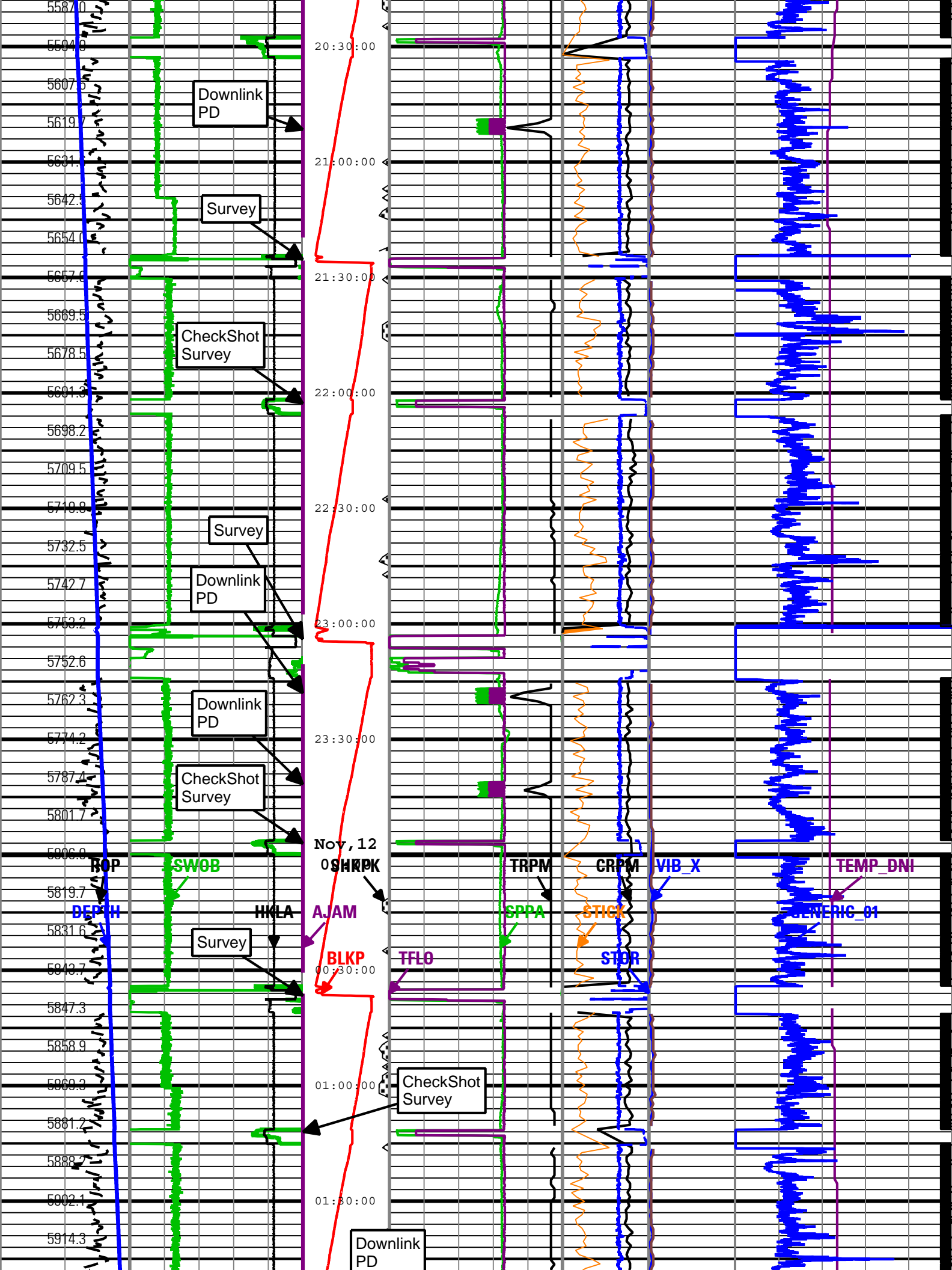


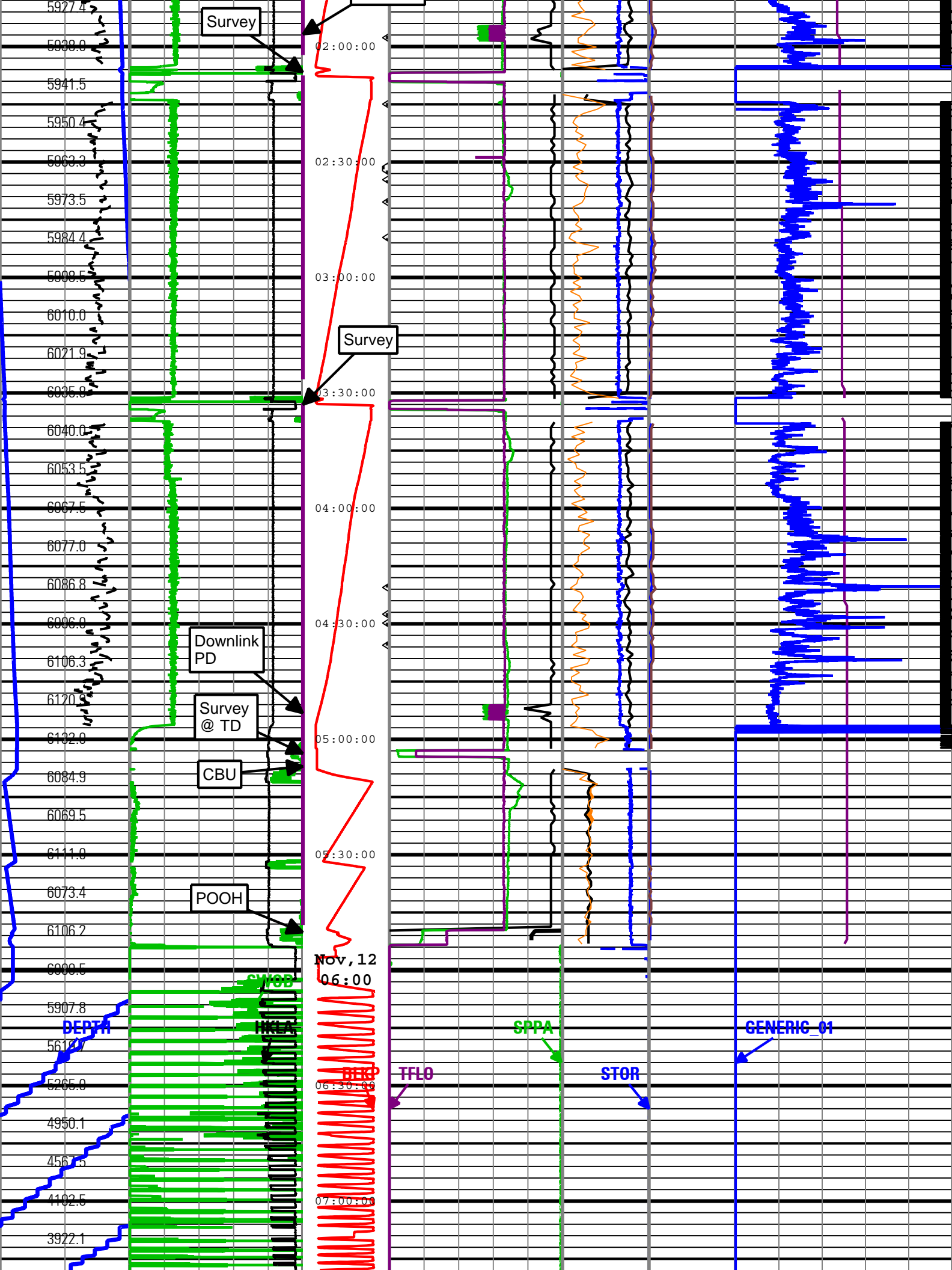


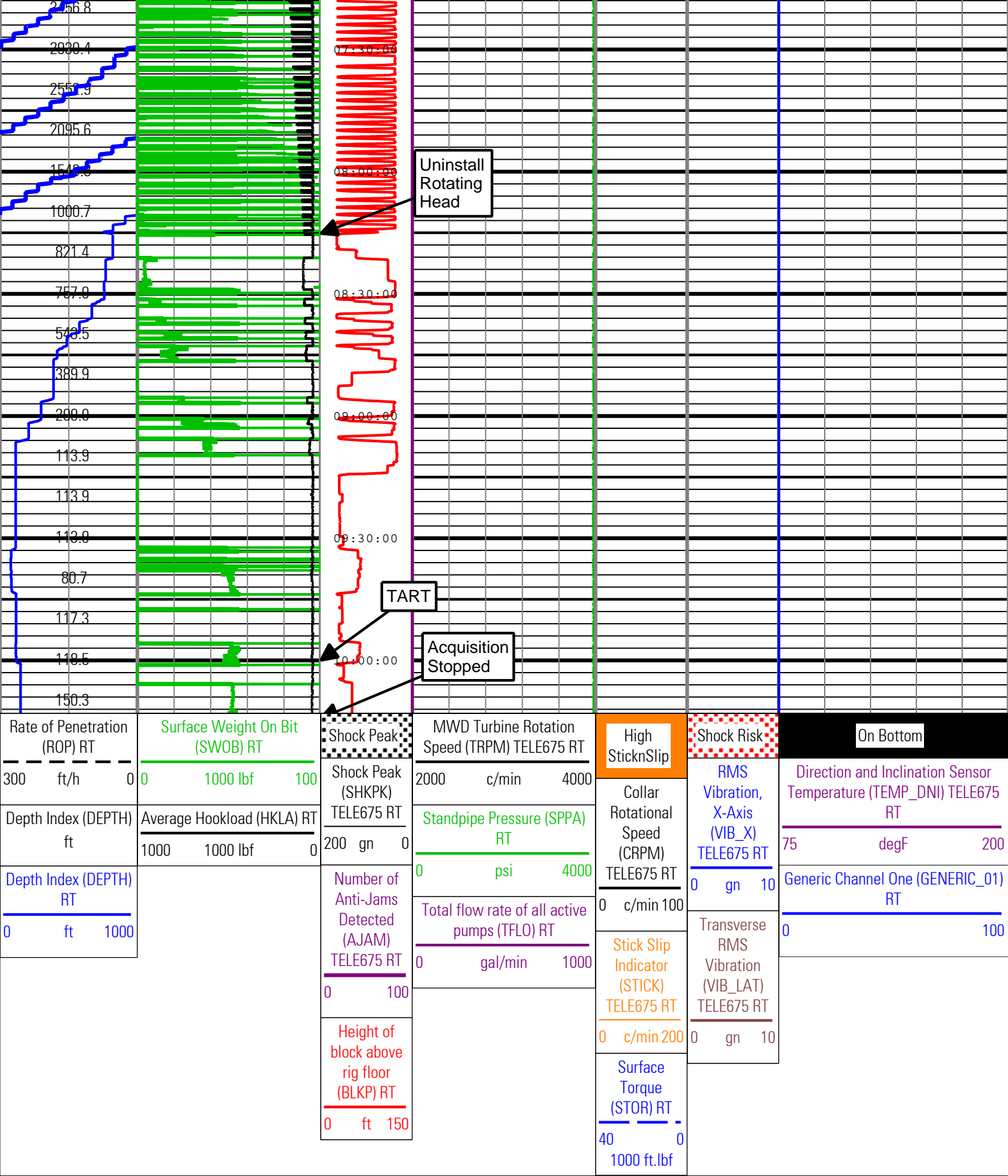












Description: TeleScope Drilling Mechanics Time RT Format: Log (PERFORM - Drilling Mechanics) Index Scale: 2 in per 3600 s Index Type: Time Creation Date: 12-Nov-2010 12:19:15

Channel Processing Parameters				
Parameter	Description	ToolPath	Value	Unit
DEPTH_SEL	Depth Selection Parameter	DNMSESSION	Driller's Depth	

Tool Control Parameters

Company: ExxonMobil Oil Corporation

Well: PCU 296 5A5

Field: Piceance Creek

County: Rio Blanco

State: Colorado

Country: United States



Schlumberger

PERFORM - Drilling Mechanics

2 in / hr Time Based

Real Time Log