

Downhole Schematic for S Parachute Fed 30-14 (PA30)



Project :South Piceance

API # :05045098130000

Surface Location : NENE Sec 30 T7S - R95W 6th PM

Area : Parachute

County : GARFIELD

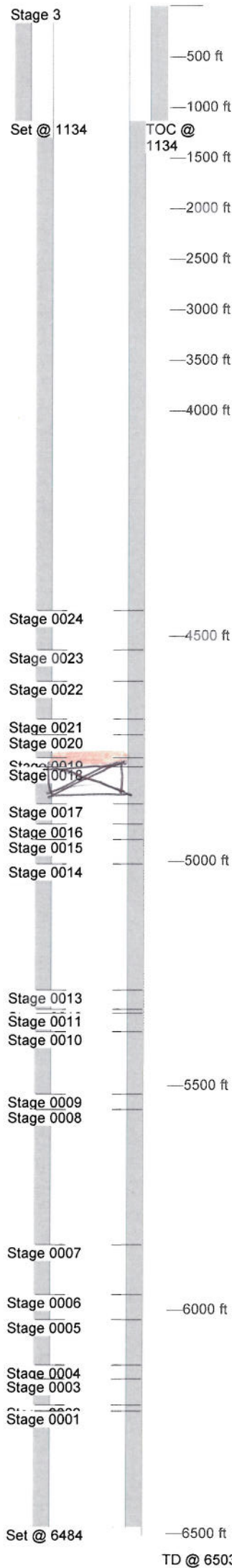
BHL : NENE-30-7S-9S W 6th PM

As Of : 08/24/2011

GL : 5809.0 ft

KB to GL : 0.0 ft

KB : 0.0 ft



Casing Details		Hole	Casing	Mass	Set At	Length	Thread	Grade	Description
Section	Surface	11.000	8.625	32	1,134	1,089	STC	J-55	Casing
			8.625	32	45	1	STC	J-55	Float Collar
			8.625	32	43	42	STC	J-55	Casing
			8.625	32	1	1	STC	J-55	Guide Shoe
Production		7.875	5.5	17	6,484	6,439	LTC	N-80	Casing
			5.5	17	45	2	LTC	N-80	Float Collar
			5.5	17	43	43	LTC	N-80	Casing
			5.5	17	0	1	LTC	N-80	Guide Shoe

Cement Details		Sequence	Top	Density	Blend / Additives			
Section	Surface	Lead	0	12.5	Class G / 50/50 POZ			
		Tail	0	15.8	Class G /			
Production		Lead	1,134	10.5	Lightweight / TXI Lightweight			
		Tail	1,134	10.5	Lightweight / LiteCrete 38.5(D961)/61.5(D124			

Perforations		Stage	Date	From	To	Shots	Stage	Date	From	To	Shots
Stage 0001		0001	05/03/2004	6,225	6,228	2	0018	05/04/2004	4,872	4,876	2
Stage 0002		0002	05/03/2004	6,212	6,214	2	0019	05/04/2004	4,790	4,792	2
Stage 0003		0003	05/03/2004	6,154	6,156	2	0020	05/04/2004	4,770	4,773	2
Stage 0004		0004	05/03/2004	6,123	6,126	2	0021	05/04/2004	4,719	4,722	2
Stage 0005		0005	05/04/2004	6,022	6,027	2	0022	05/04/2004	4,684	4,687	2
Stage 0006		0006	05/04/2004	5,966	5,970	2	0023	05/04/2004	4,600	4,603	2
Stage 0007		0007	05/04/2004	5,854	5,860	2	0024	05/04/2004	4,530	4,534	2
Stage 0008		0008	05/04/2004	5,552	5,559	2	0025	05/04/2004	4,442	4,446	2
Stage 0009		0009	05/04/2004	5,518	5,521	2	0026	05/04/2004	4,442	4,446	2
Stage 0010		0010	05/04/2004	5,379	5,382	2	0027	05/04/2004	4,442	4,446	2
Stage 0011		0011	05/04/2004	5,338	5,340	2	0028	05/04/2004	4,442	4,446	2
Stage 0012		0012	05/04/2004	5,329	5,332	2	0029	05/04/2004	4,442	4,446	2
Stage 0013		0013	05/04/2004	5,329	5,332	2	0030	05/04/2004	4,442	4,446	2
Stage 0014		0014	05/04/2004	5,286	5,289	2	0031	05/04/2004	4,442	4,446	2
Stage 0015		0015	05/04/2004	5,006	5,008	2	0032	05/04/2004	4,442	4,446	2
Stage 0016		0016	05/04/2004	4,951	4,953	2	0033	05/04/2004	4,442	4,446	2
Stage 0017		0017	05/04/2004	4,917	4,920	2	0034	05/04/2004	4,442	4,446	2
Stage 0018		0018	05/04/2004	4,917	4,920	2	0035	05/04/2004	4,442	4,446	2
Stage 0019		0019	05/04/2004	4,917	4,920	2	0036	05/04/2004	4,442	4,446	2
Stage 0020		0020	05/04/2004	4,917	4,920	2	0037	05/04/2004	4,442	4,446	2
Stage 0021		0021	05/04/2004	4,917	4,920	2	0038	05/04/2004	4,442	4,446	2
Stage 0022		0022	05/04/2004	4,917	4,920	2	0039	05/04/2004	4,442	4,446	2
Stage 0023		0023	05/04/2004	4,917	4,920	2	0040	05/04/2004	4,442	4,446	2
Stage 0024		0024	05/04/2004	4,917	4,920	2	0041	05/04/2004	4,442	4,446	2

Frac Summary		Stage	Date	From	To	Shots
Stage 2 : No Frac		0001	05/03/2004	6,225	6,228	2
Stage 0001 : No Frac		0002	05/03/2004	6,212	6,214	2
Stage 0002 : No Frac		0003	05/03/2004	6,154	6,156	2
Stage 0003 : No Frac		0004	05/03/2004	6,123	6,126	2
Stage 0004 : No Frac		0005	05/04/2004	6,022	6,027	2
Stage 1 : No Frac		0006	05/04/2004	5,966	5,970	2
Stage 0005 : No Frac		0007	05/04/2004	5,854	5,860	2
Stage 0006 : No Frac		0008	05/04/2004	5,552	5,559	2
Stage 0007 : No Frac		0009	05/04/2004	5,518	5,521	2
Stage 0008 : No Frac		0010	05/04/2004	5,379	5,382	2
Stage 0009 : No Frac		0011	05/04/2004	5,338	5,340	2
Stage 0010 : No Frac		0012	05/04/2004	5,329	5,332	2
Stage 0011 : No Frac		0013	05/04/2004	5,329	5,332	2
Stage 0012 : No Frac		0014	05/04/2004	5,286	5,289	2
Stage 0013 : No Frac		0015	05/04/2004	5,006	5,008	2
Stage 0014 : No Frac		0016	05/04/2004	4,951	4,953	2
Stage 0015 : No Frac		0017	05/04/2004	4,917	4,920	2
Stage 0016 : No Frac		0018	05/04/2004	4,917	4,920	2
Stage 0017 : No Frac		0019	05/04/2004	4,917	4,920	2
Stage 0018 : No Frac		0020	05/04/2004	4,917	4,920	2
Stage 0019 : No Frac		0021	05/04/2004	4,917	4,920	2
Stage 0020 : No Frac		0022	05/04/2004	4,917	4,920	2
Stage 0021 : No Frac		0023	05/04/2004	4,917	4,920	2
Stage 0022 : No Frac		0024	05/04/2004	4,917	4,920	2

Bridge Plug Details		Depth	Date Set	Plug Type	Sacks Cement
Surface		4,385.0	08/24/2011	CBP	2

Comments	
SIBHP 0 psi 8/24/11	
Well TA'd	