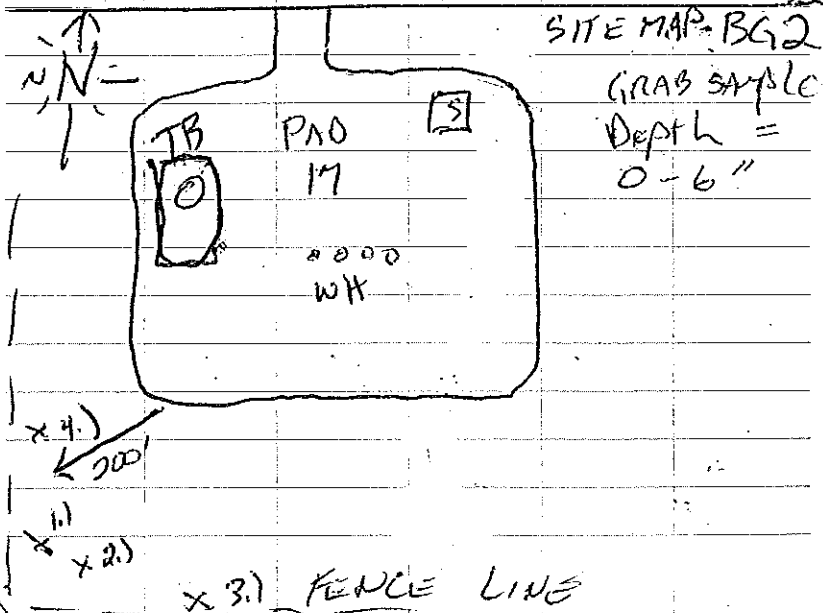
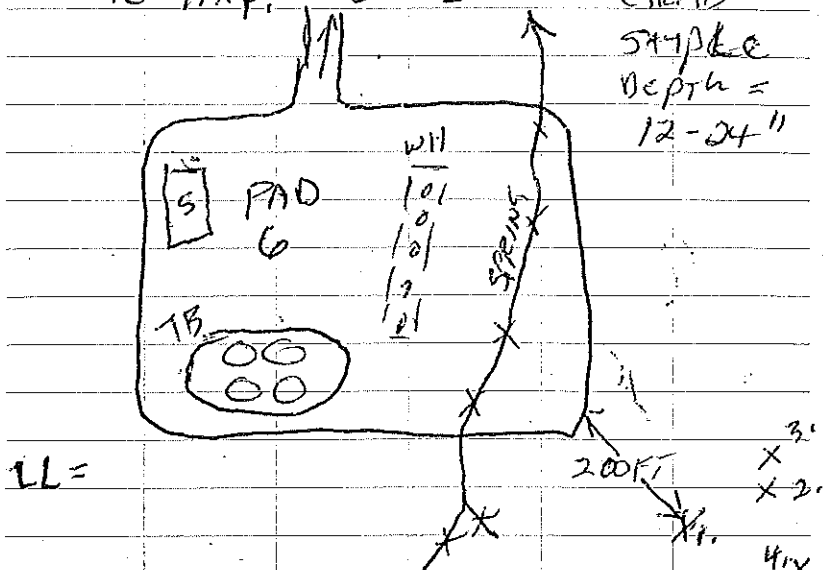


06-03-10 JOB # 010-1237

SITE MAP - BG1

GRAB
SAMPLE
Depth =
12-24"



JPL (cont)

06-03-10 JOB # 010-1237

DELTA PETRO - BACKGROUND SOIL
SAMPLING. 1.) VEGA UNITS.

ARRIVED AT PAD #6 AT THE VEGA UNIT
AT 0900HRS. Prepared to collect
SOIL SAMPLE. 4 GRAB SAMPLES WERE
COLLECTED AND MIXED TOGETHER FOR
1 COMPOSITE SAMPLE (SEE SITE MAP)
SOIL WAS SLIGHTLY MOIST, EARTHY
SMELL, LOOSY IN NATURE. - PAD 6
BG1 COLLECTED @ 0920 HRS.

LL = 39.20044, 107.75257, 8409' ELE.

SOUTH WEST OF PAD 17 (SEE SITE MAP)

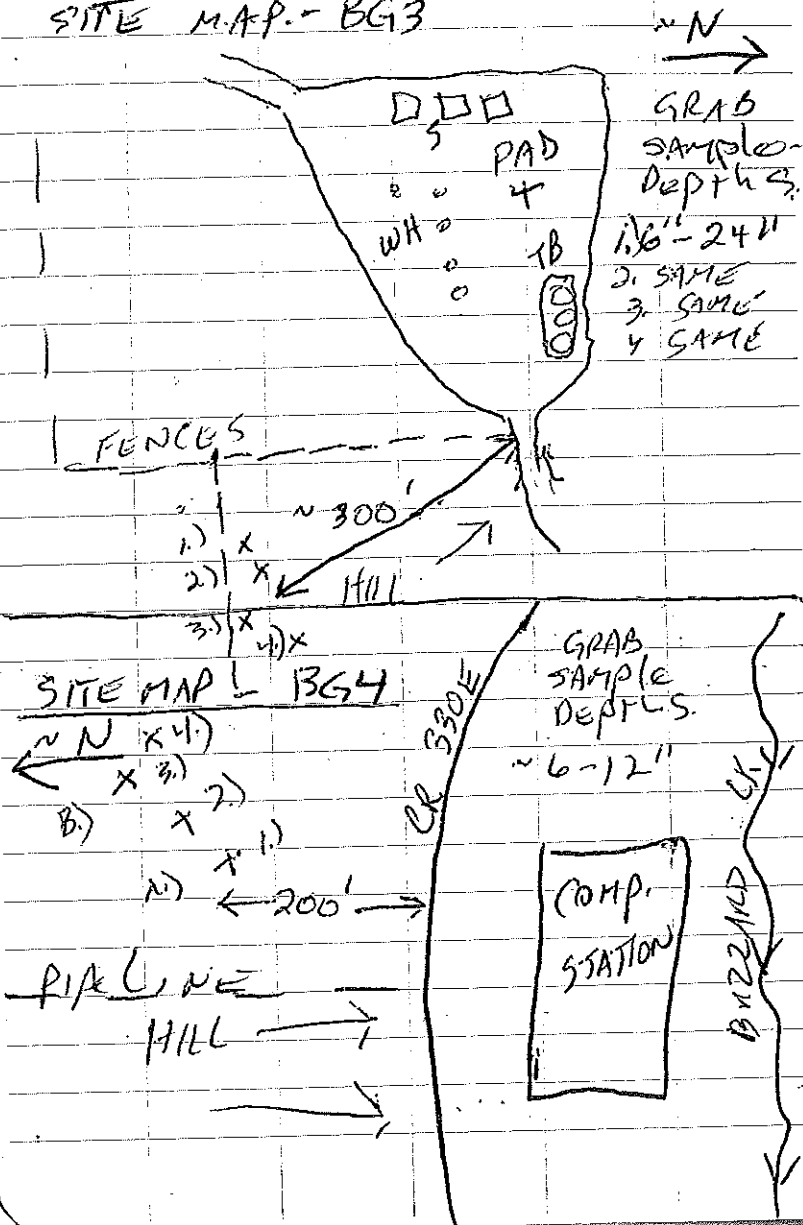
COLLECTED 4 GRAB SAMPLES AND MIXED
THEM TOGETHER FOR 1 COMPOSITE SAMPLE
BG2 @ 1045 HRS. SOIL WAS
MOSTLY DRY AND ROCKY, ODOR
WAS NEUTRAL.

LL = 39.21197, 107.77711, 807.7 ELE.

B) LL = 39.21619, 107.74252 JPL

(cont) Alt in the line

06-03-10 JOB # 010-1237
 SITE MAP - BG3



(CON'T)

06-03-10 JOB # 010-1237

PA HARRISON CR UNIT, PAD # 4.
 BACKGROUND SAMPLING - COLLECTED 4
 GRAB SAMPLES AND MIXED THEM
 TOGETHER TO MAKE 1 COMPOSITE
 SAMPLE BG3 @ 1300 hrs.
 LL = 39.23029, 107.74039, 8148' ELE.
 SOIL WAS SLIGHTLY MOIST, EARTHY
 SOME SAND, NEUTRAL ODOR.

BUZZARD CR UNIT. GREEN ACRE
 COMPRESSOR STATION - BACKGROUND
 SAMPLING ON NORTH SIDE OF CR
 (SEE SITE MAP).
 COLLECTED 4 GRAB SAMPLES AND MIXED
 TOGETHER TO MAKE 1 COMPOSITE SAMPLE
BG4 @ 1440 hrs.
 A) LL = 39.27604, 107.74266, 7369' ELE.
 SOIL SLIGHTLY MOIST - SANDY CLAY
 NEUTRAL ODOR.
 B) LL = 39.27619, 107.74252, 7348' ELE.

Return the Rain

