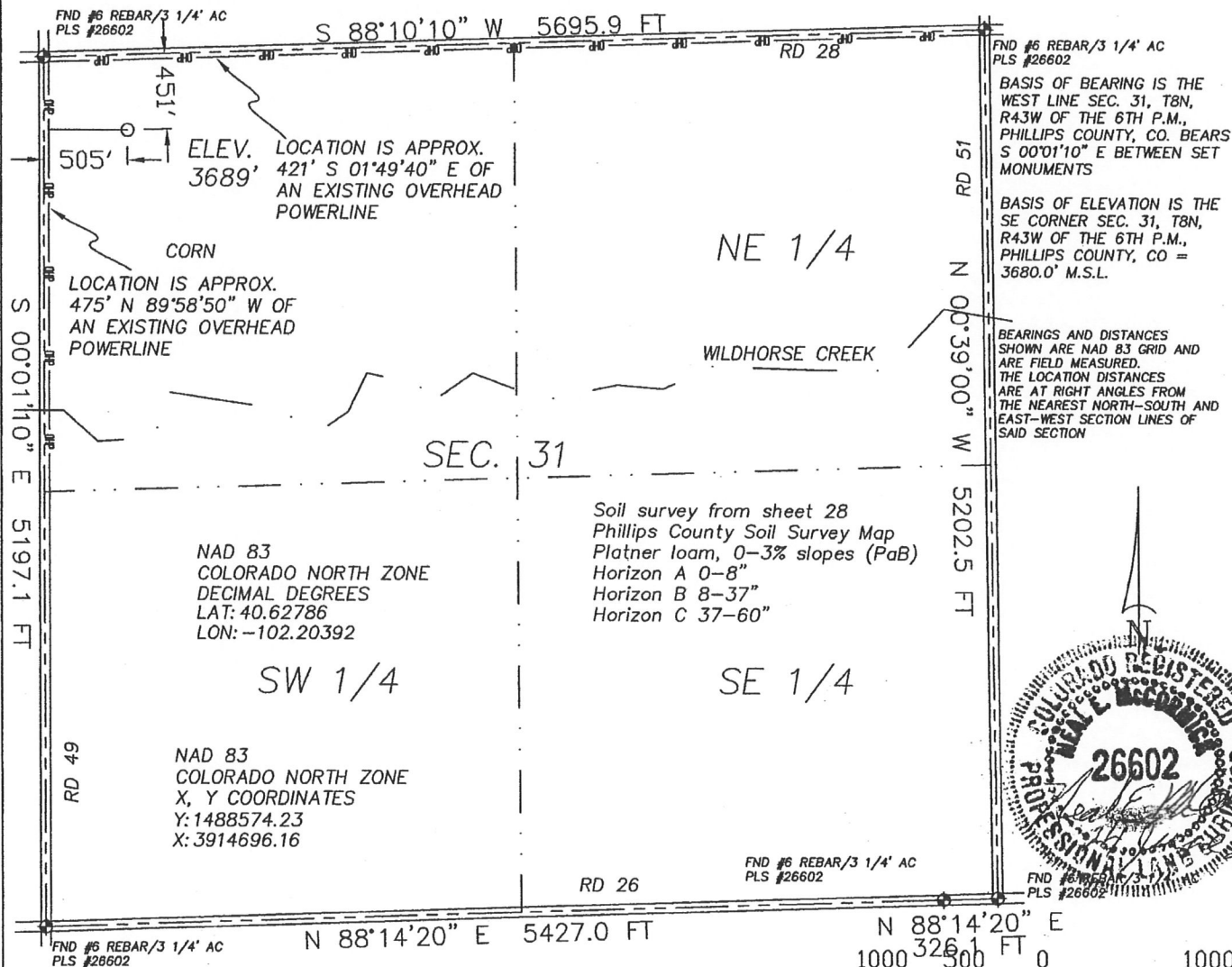


[illegible]

There are no visible improvements within 400 feet of the location, except
 a county road and overhead powerlines..



1.763 PDOP

☀ *Dual Producer*

- Oil well

 Gas Well

 Dry Hole

GPS OPERATOR: KEVIN MCCORMICK

- Location

- x - Fence Line

— Half-Sec. Line

— — — — Section Line

== Road

== Trail

⊕ Survey Monument

DATE OF DRAWING:

24 JUNE 2011

DATE OF FIELD WORK:

10 JUNE 2011

SAGEHORN 843-31-11

NW 1/4 NW 1/4 SEC. 31, T8N, R43W

BLACK RAVEN ENERGY, INC.

PHILLIPS COUNTY, COLORADO

GREAT PLAINS
SURVEYING, INC.



20575 C.R. 21
Haxtun, CO 80731

Phone 970-774-3602
Fax 970-774-3601

W318N43GPS

9402-202