



SUPERIOR
Hays,
Kansas

SONIC
LOG

Company	MULL DRILLING CO., INC.	Company	MULL DRILLING COMPANY, INC.
Well	APC-TENNEL #1-33	Well	APC-TENNEL #1-33
Field		Field	
County	KIOWA	County	KIOWA
State	COLORADO	State	COLORADO
Location:	API # : 05-061-06853-00 1204' FNL & 1798' FWL	Other Services CDL/CNL/PE DIL/MEL	
Permanent Datum Log Measured From Drilling Measured From	GROUND LEVEL KELLY BUSHING 11' A.G.L. KELLY BUSHING	Elevation K.B. 4009 D.F. G.L. 3998	
Date	8-5-11		
Run Number	TWO		
Depth Driller	5213		
Depth Logger	5214		
Bottom Logged Interval	5207		
Top Log Interval	300		
Casing Driller	336		
Casing Logger	336		
Bit Size	7.875		
Type Fluid in Hole	CHEMICAL MUD		
Density / Viscosity	9.3 / 54		
pH / Fluid Loss	9.5 / 8.8		
Source of Sample	FLOWLINE		
Rim @ Meas. Temp	0.80 @ 85F		
Rmf @ Meas. Temp	0.60 @ 85F		
Rmc @ Meas. Temp	0.96 @ 85F		
Source of Rmf / Rmc	MEASURED		
Rim @ BHT	.540 @ 127F		
Time Circulation Stopped	3 HOURS		
Time Logger on Bottom	12:15 A.M.		
Maximum Recorded Temperature	127F		
Equipment Number	860		
Location	HAYS, KS.		
Recorded By	RUPP		
Witnessed By	PHIL ASKEY		

<<< Fold Here >>>

All interpretations are opinions based on inferences from electrical or other measurements and we cannot and do not guarantee the accuracy or correctness of any interpretation, and we shall not, except in the case of gross or willful negligence on our part, be liable or responsible for any loss, costs, damages, or expenses incurred or sustained by anyone resulting from any interpretation made by any of our officers, agents or employees. These interpretations are also subject to our general terms and conditions set out in our current Price Schedule.

Comments

SUPERIOR WELL SERVICES
785-628-6395
THANK YOU FOR YOUR BUSINESS
DIRECTIONS: BRANDON, CO., W EGDE TO RD. #58, 6N, E INTO.

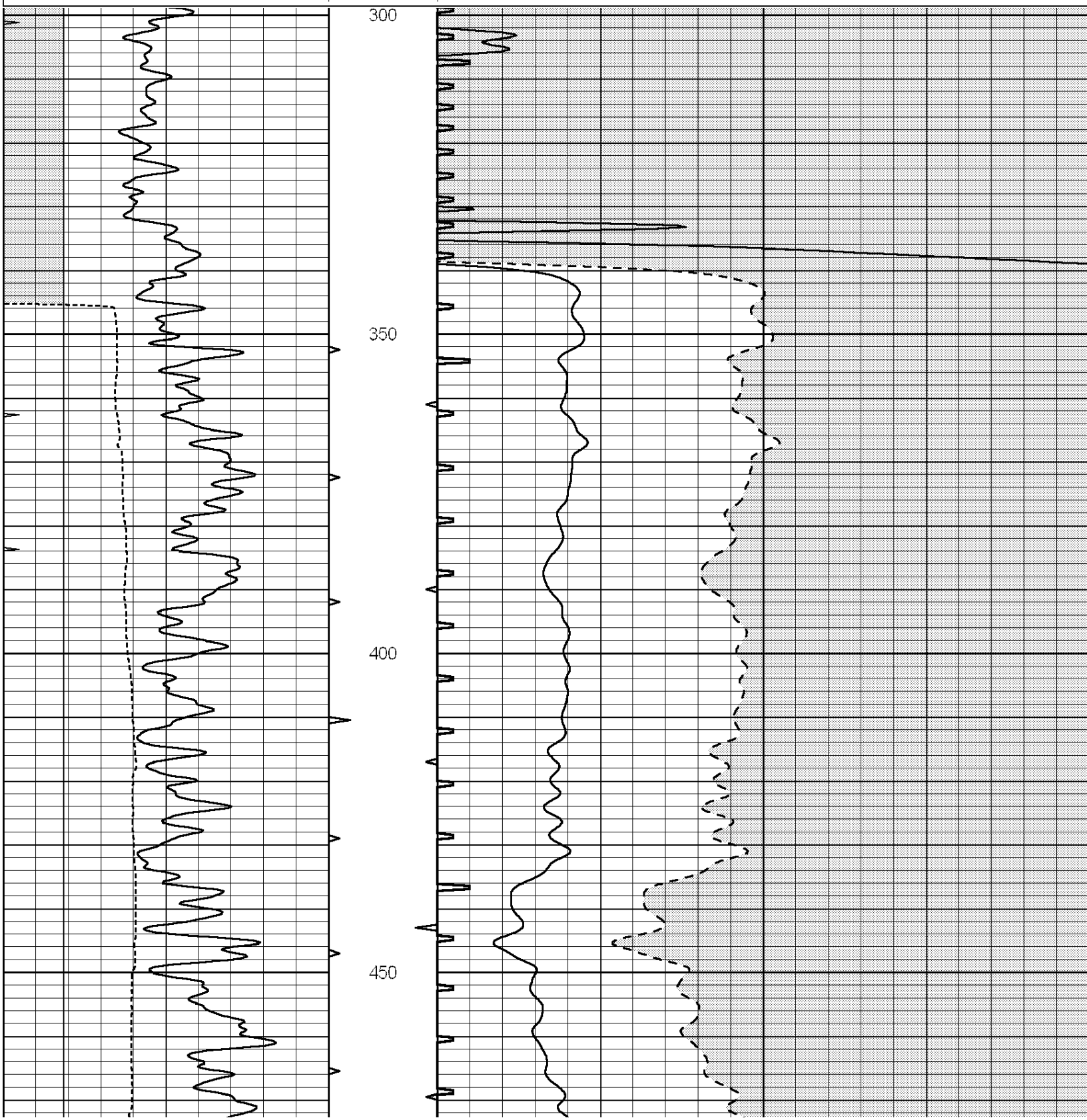


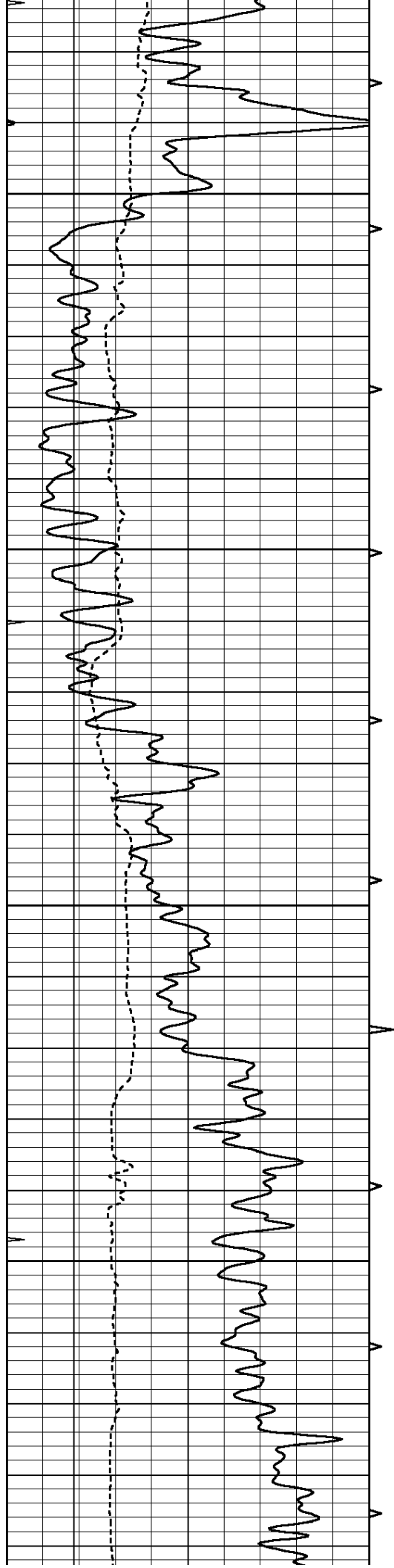
SUPERIOR
Hays,
Kansas

MAIN SECTION

Database File: 007342pdn.db
 Dataset Pathname: pass5.1
 Presentation Format: slt
 Dataset Creation: Fri Aug 05 07:42:44 2011
 Charted by: Depth in Feet scaled 1:240

0	GAMMA RAY (GAPI)	150	ABHV	140	DELTA TIME (usec/ft)		40
6	MELCAL (in)	16	10 (ft3)	0	30	SONIC POROSITY (pu)	
-----			-----				
0	MINMK	20	TBHV	0	ITT (msec)	20	
			0 (ft3)	10			



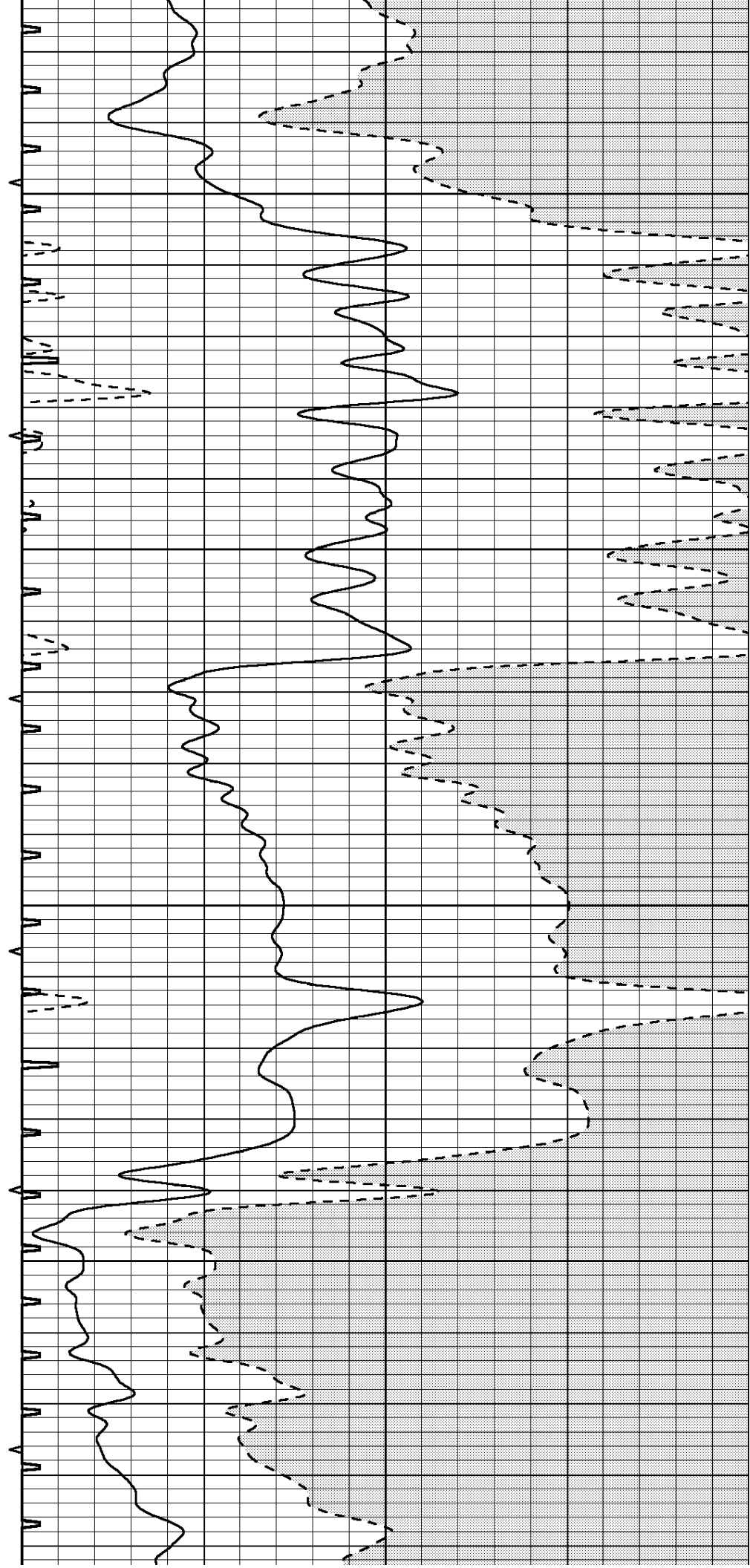


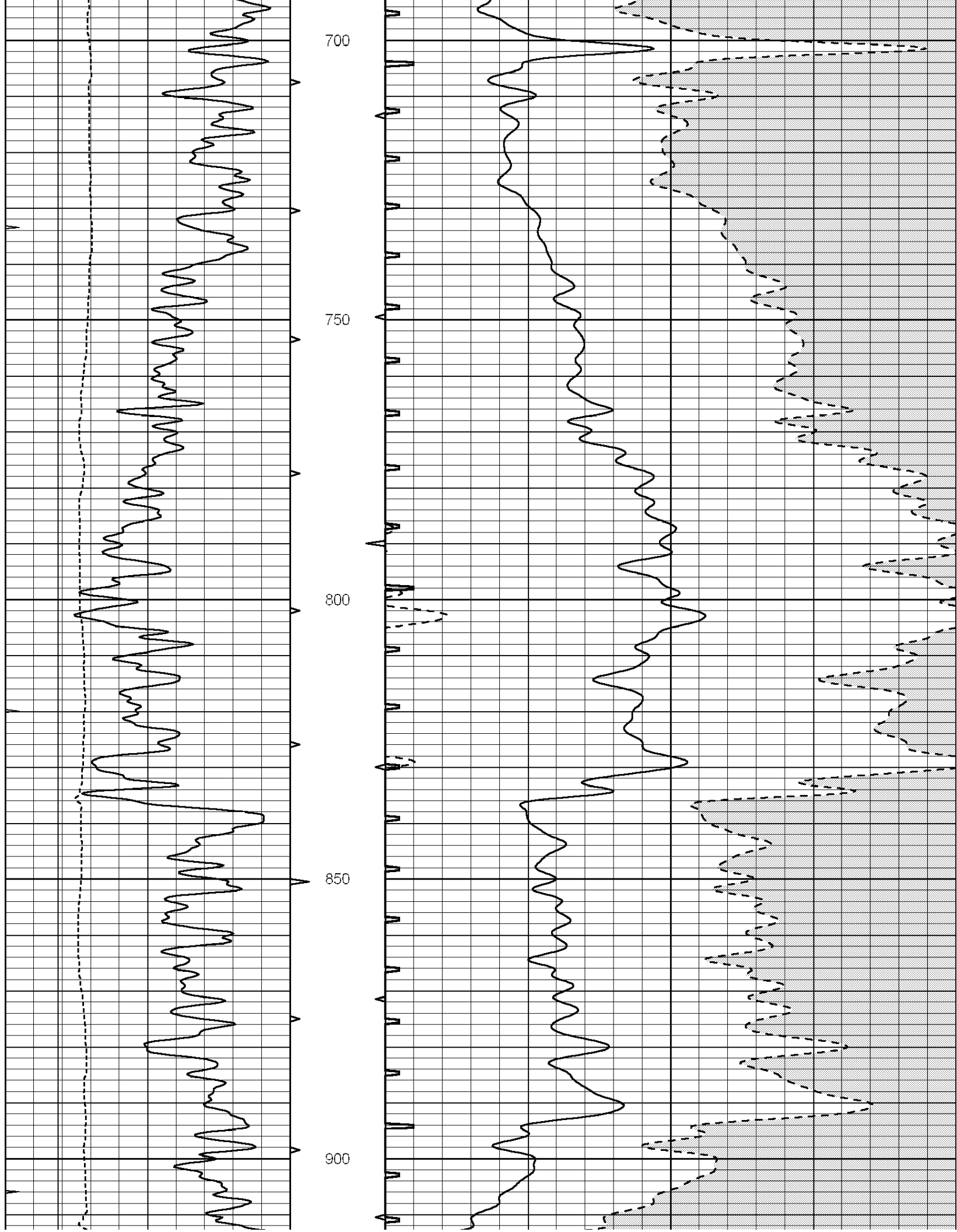
500

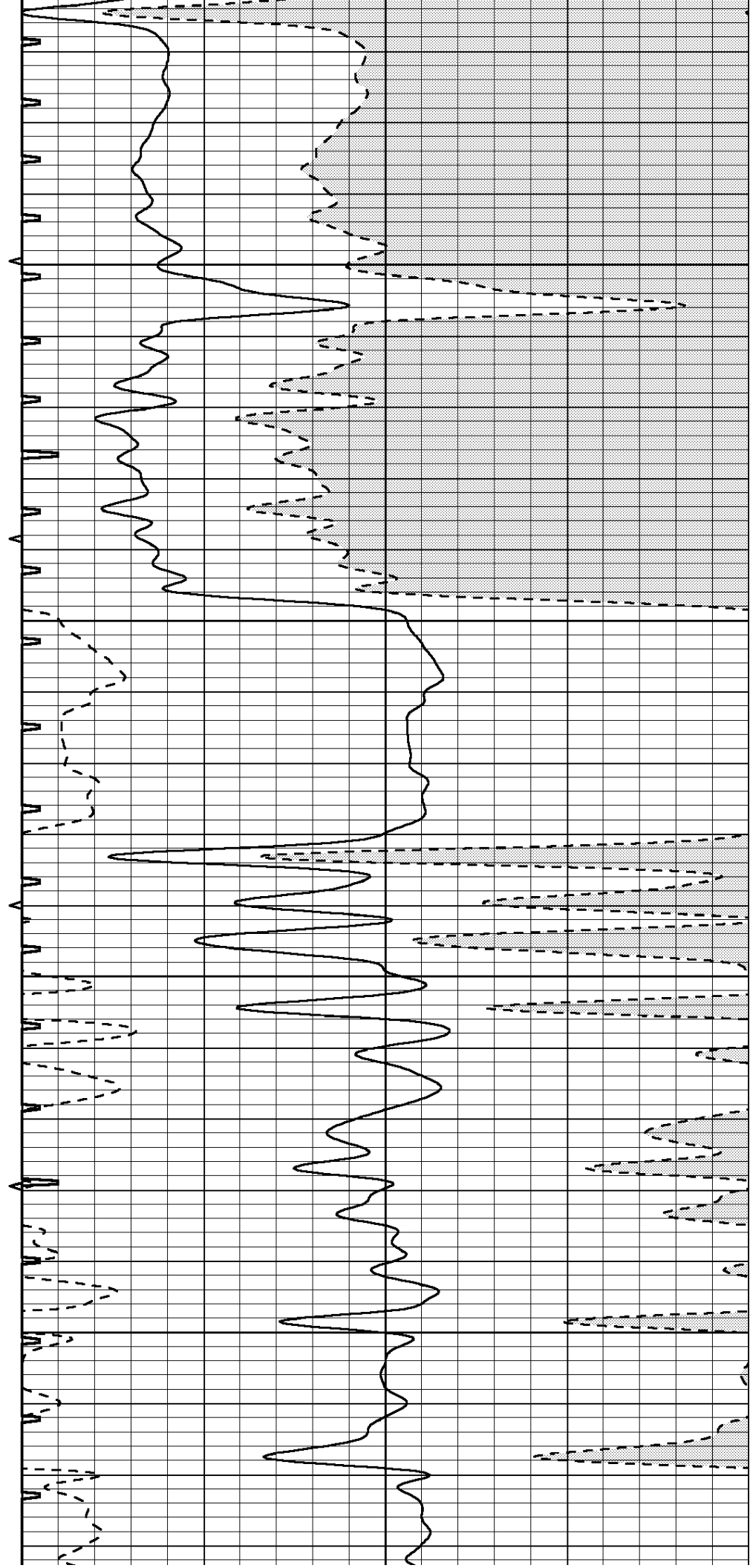
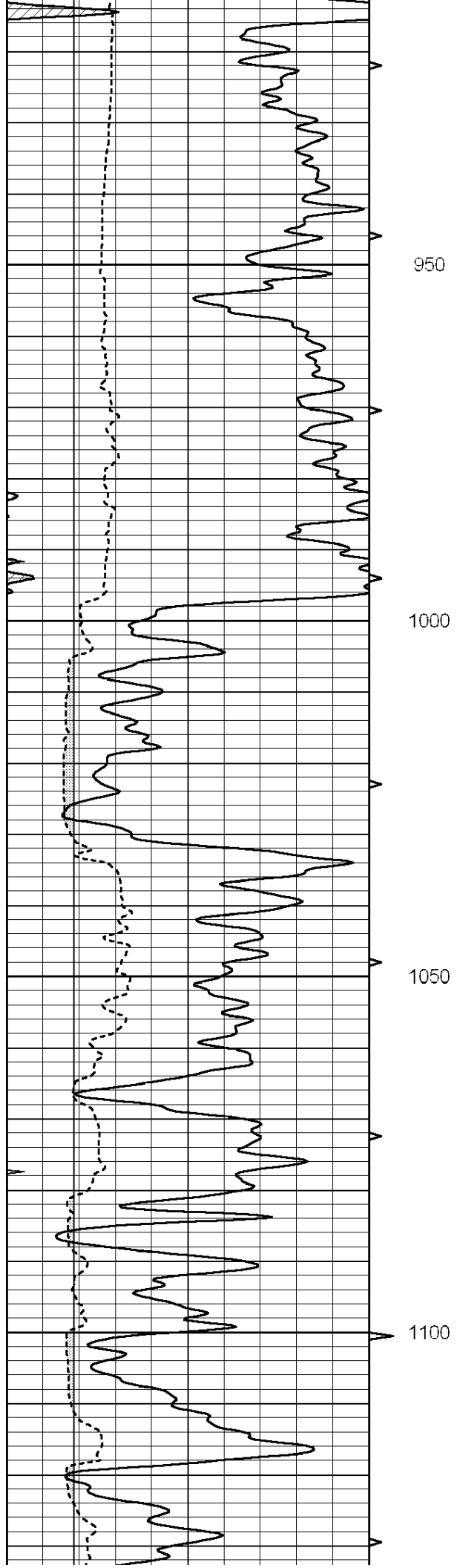
550

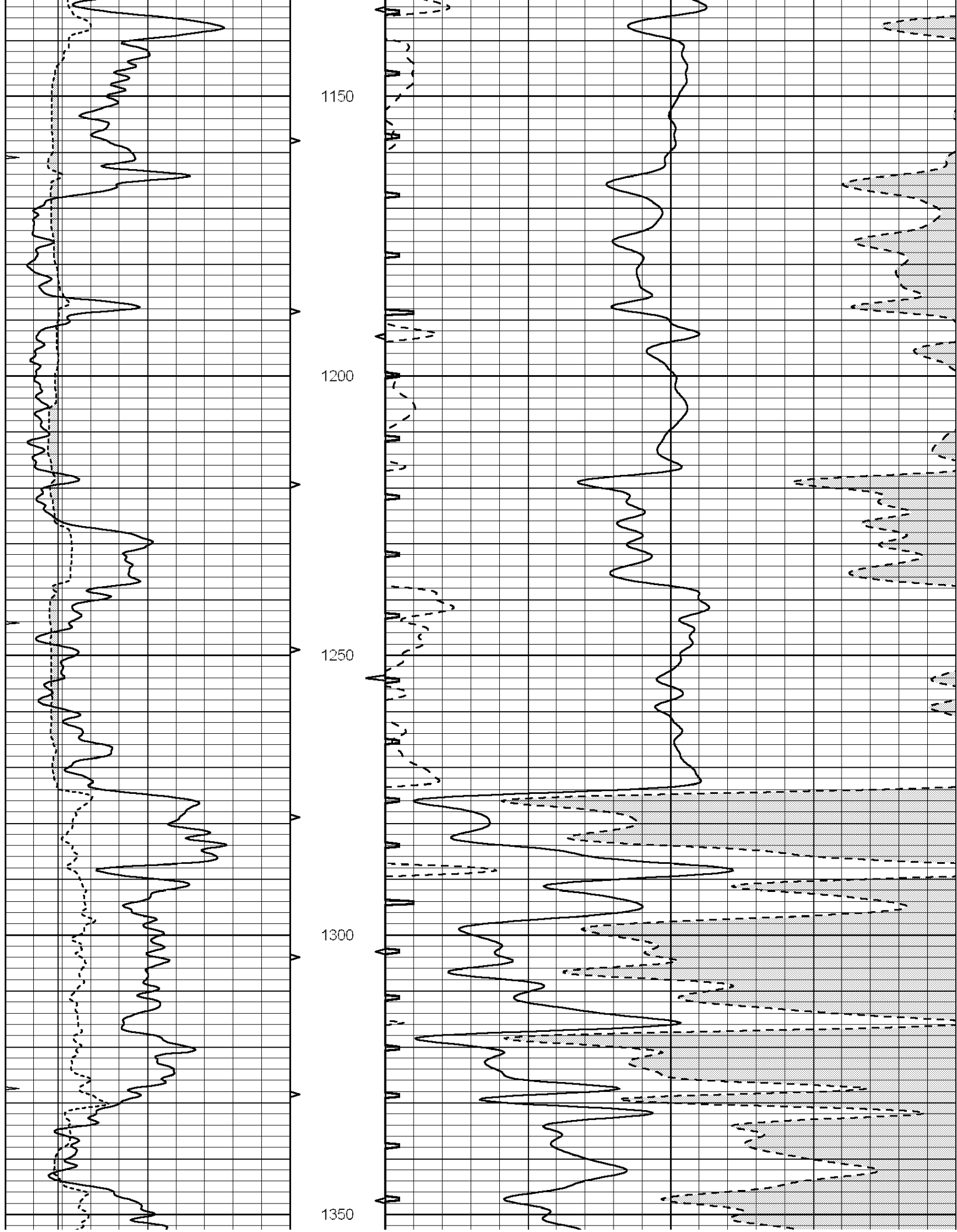
600

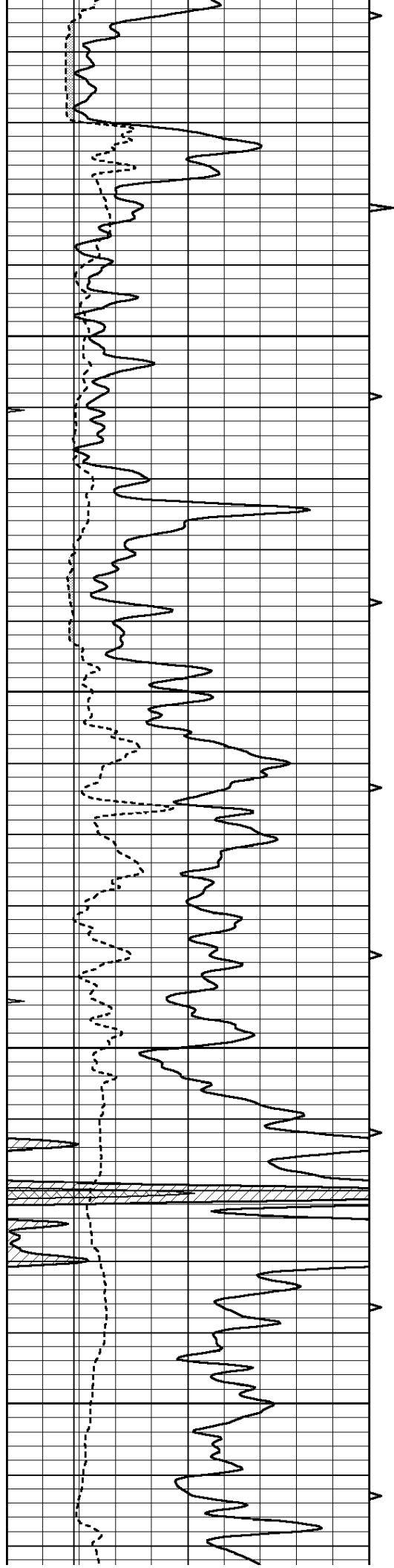
650









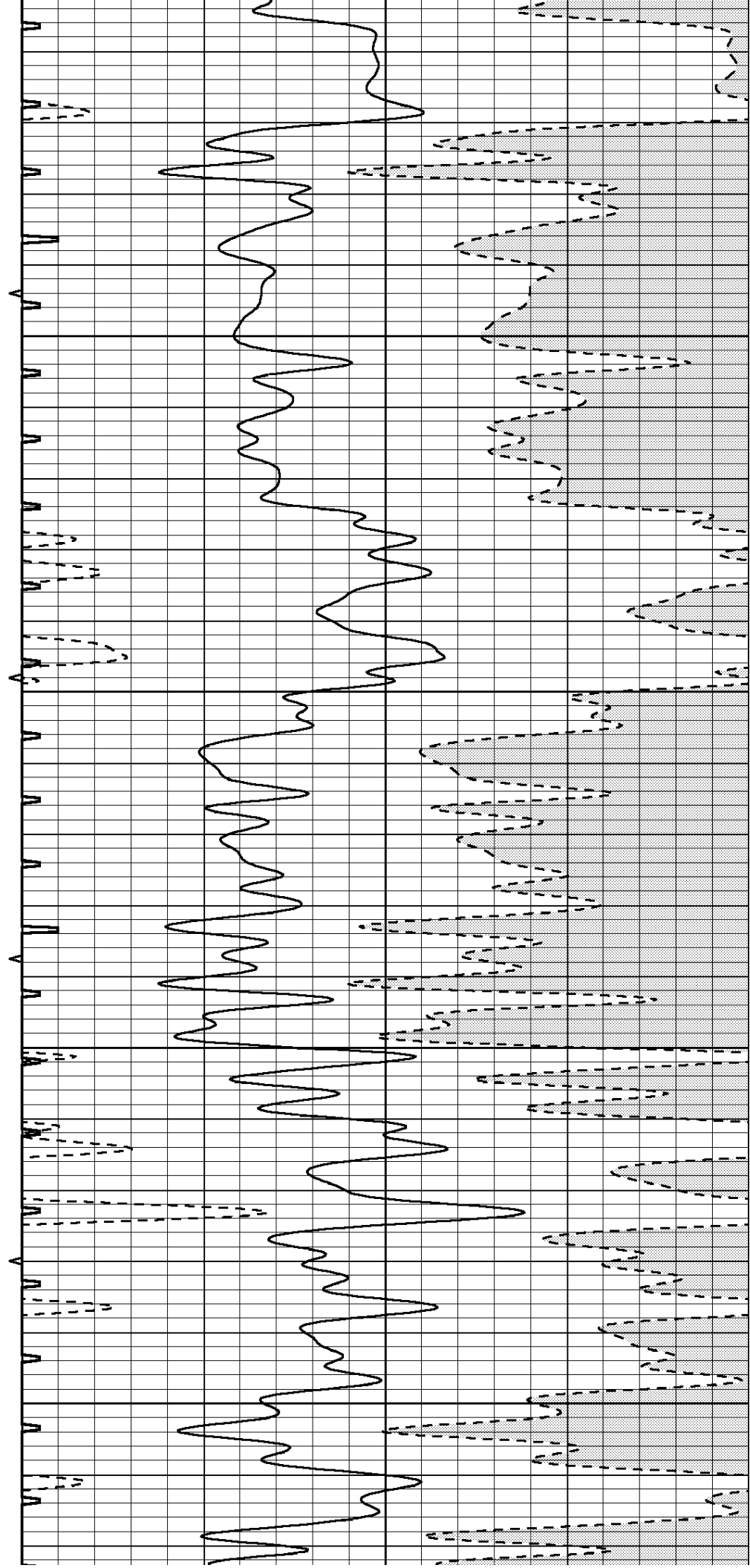


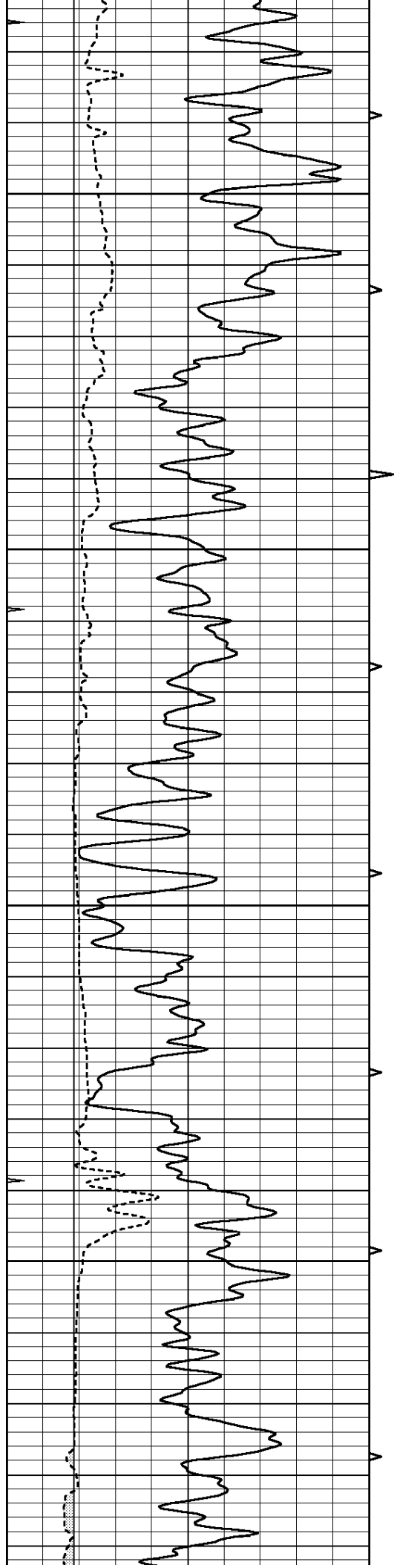
1400

1450

1500

1550



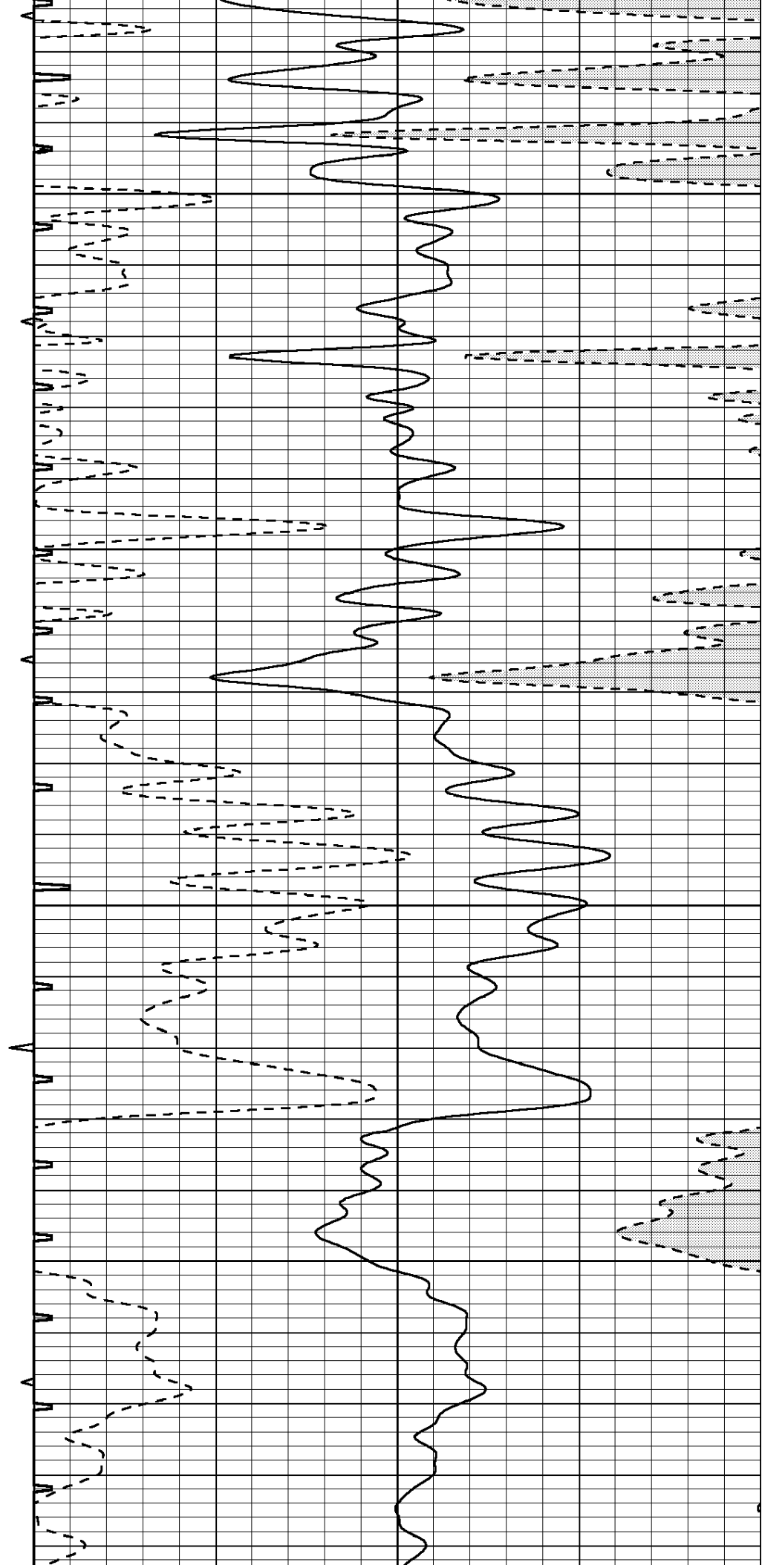


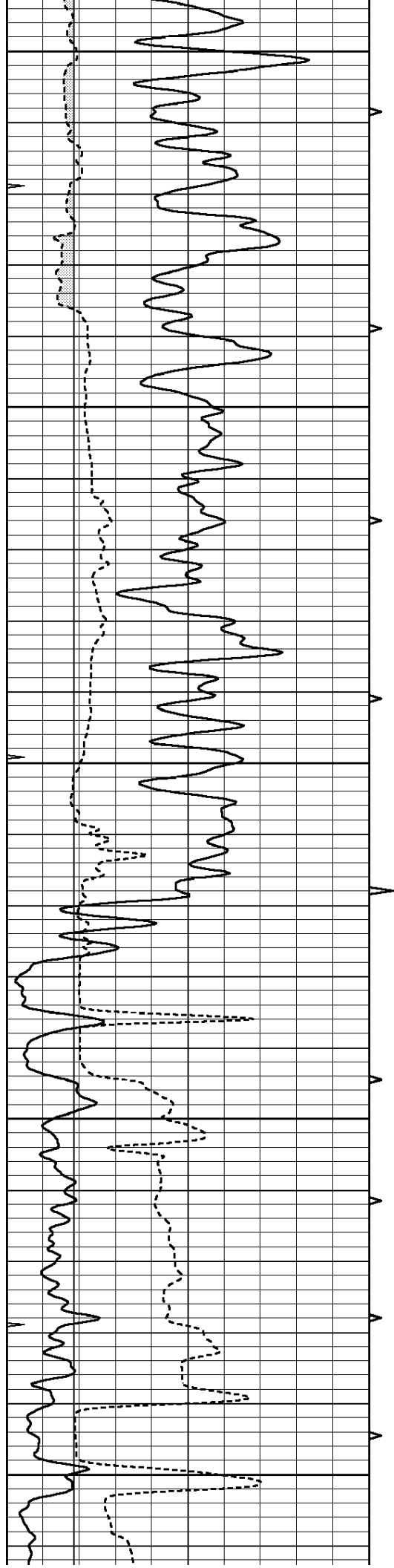
1600

1650

1700

1750





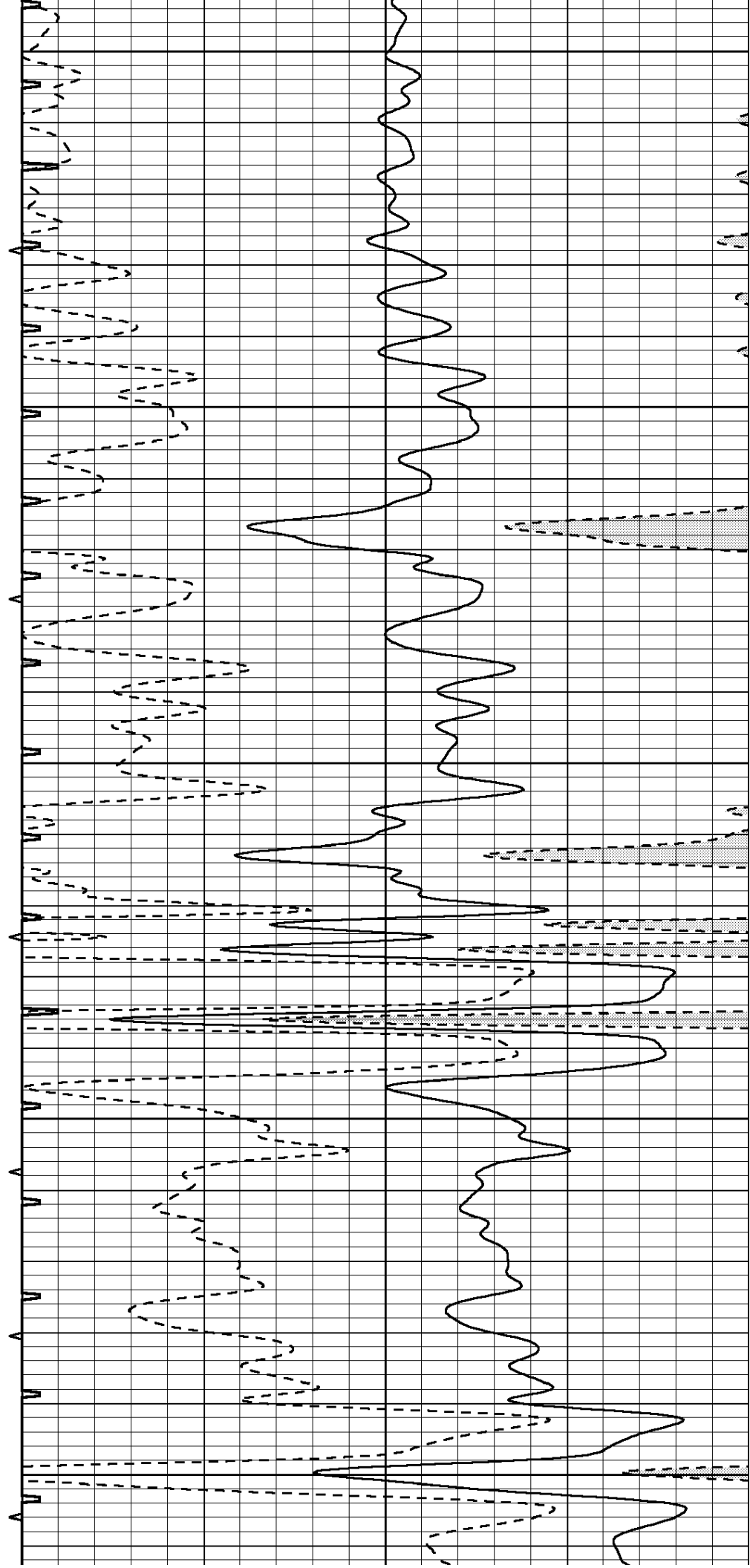
1800

1850

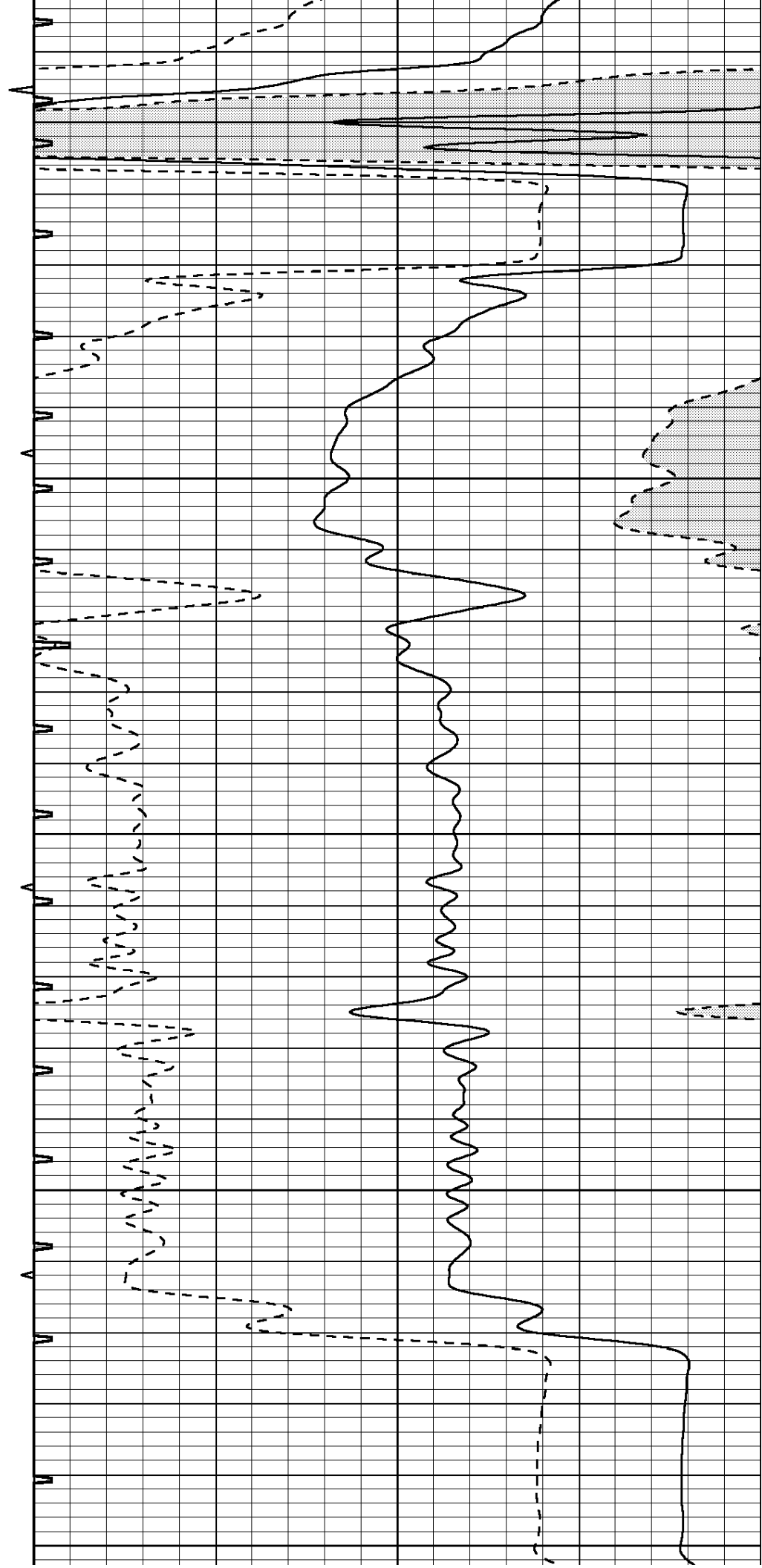
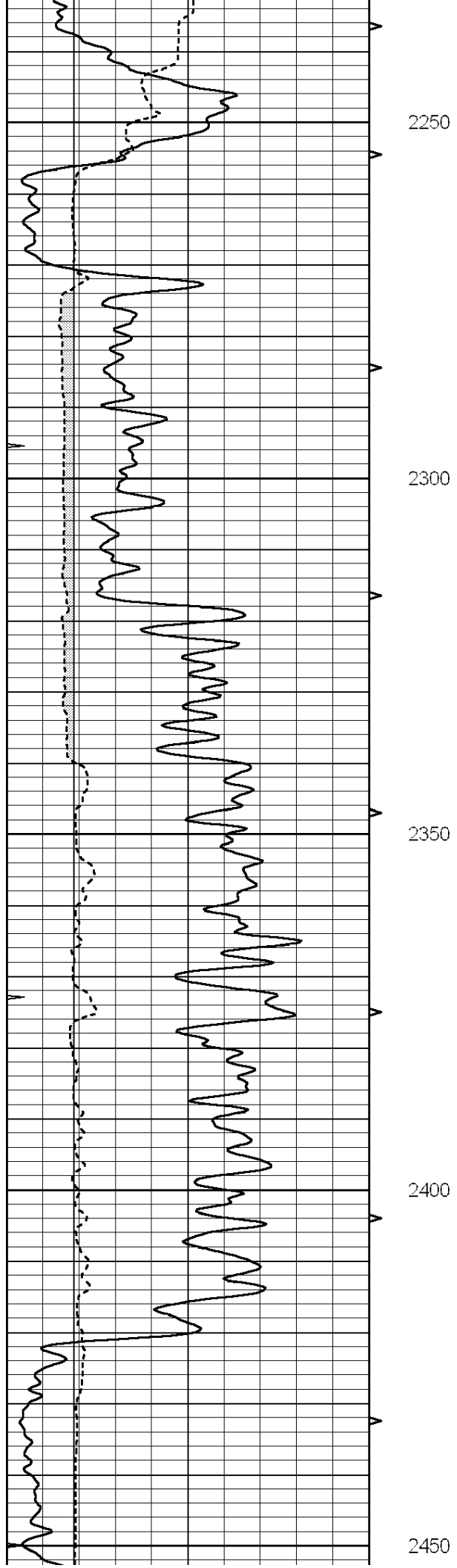
1900

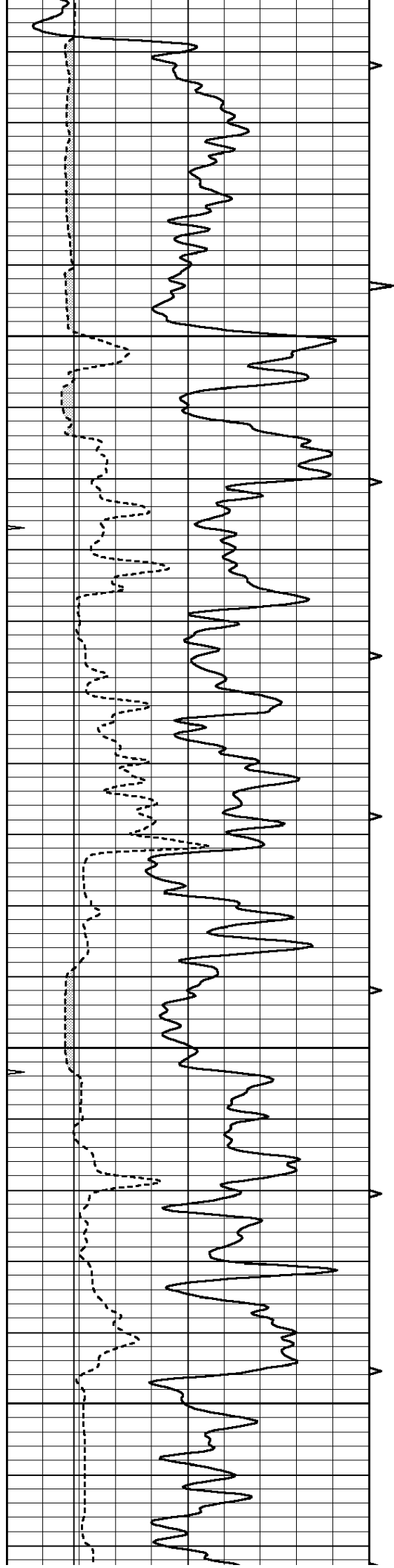
1950

2000







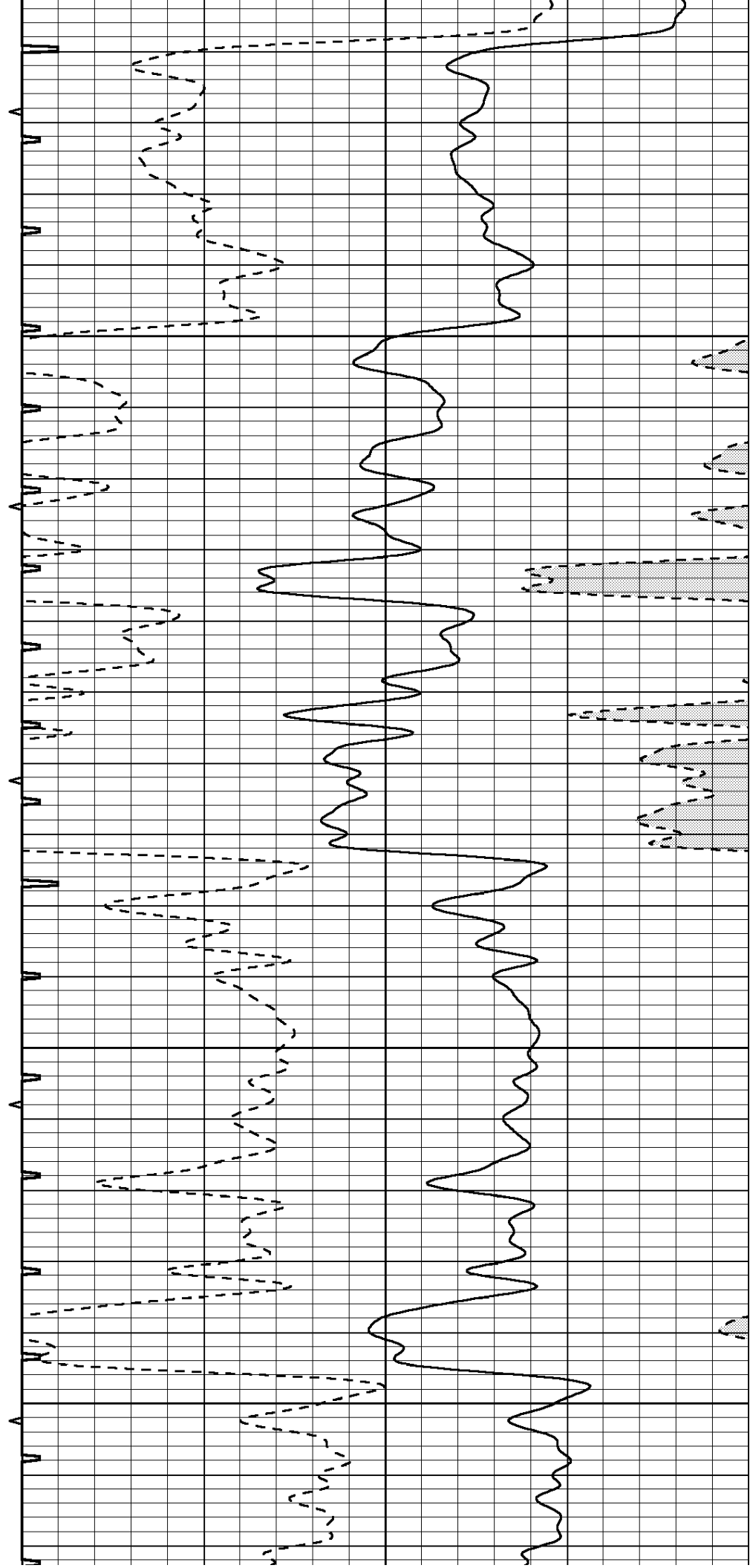


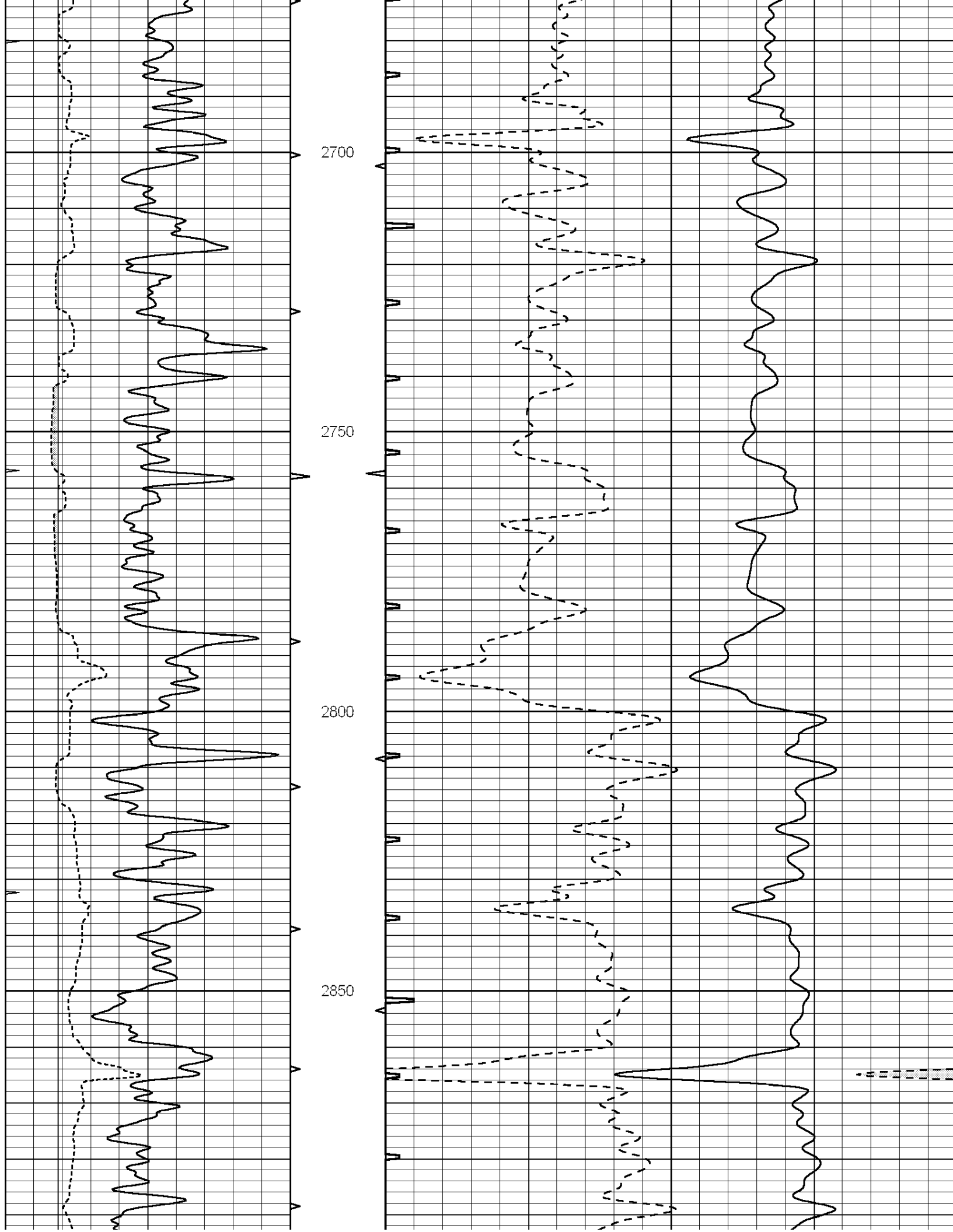
2500

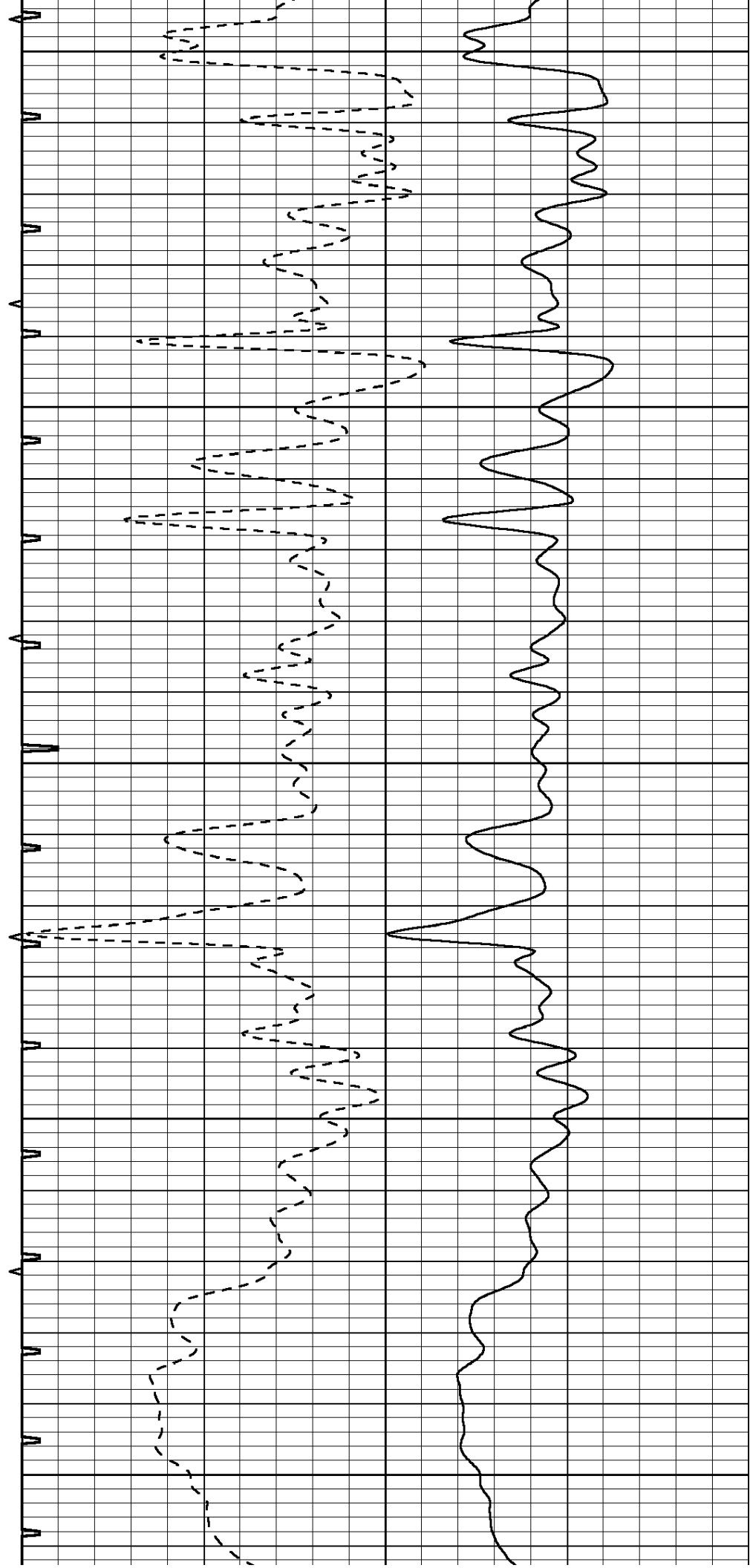
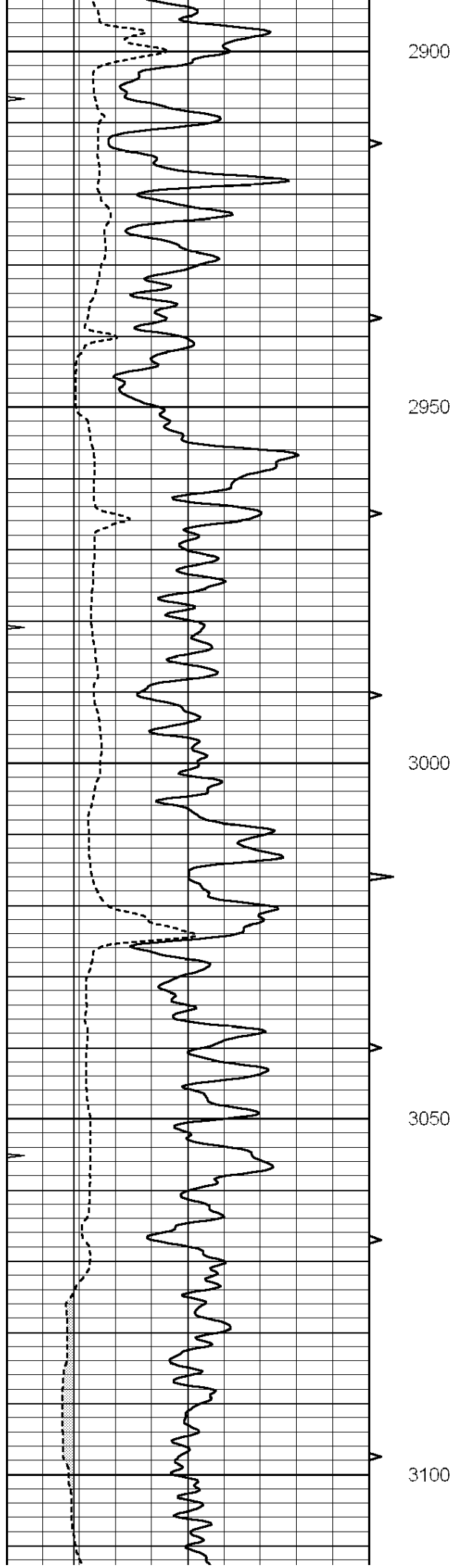
2550

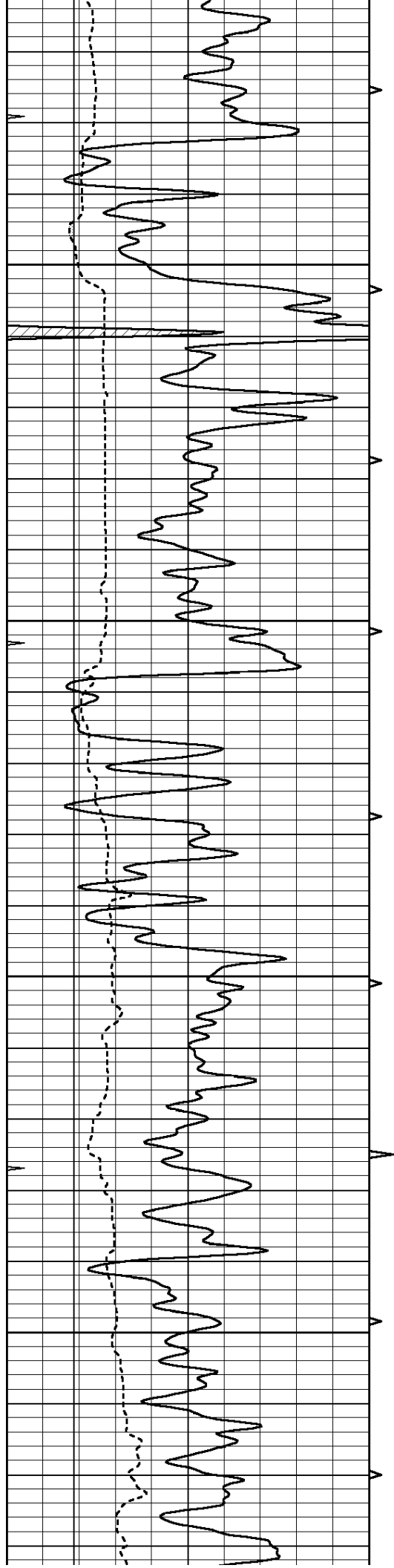
2600

2650







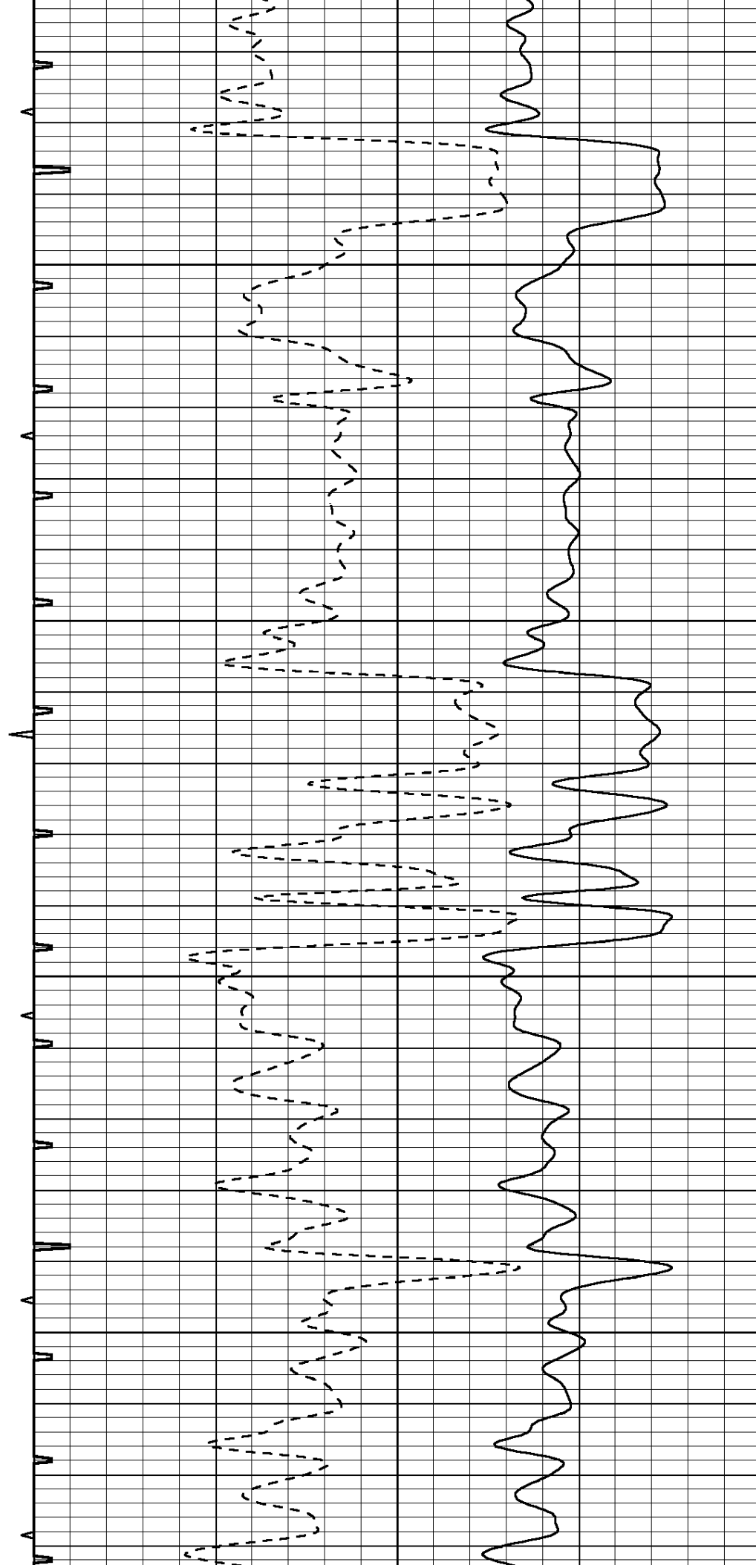


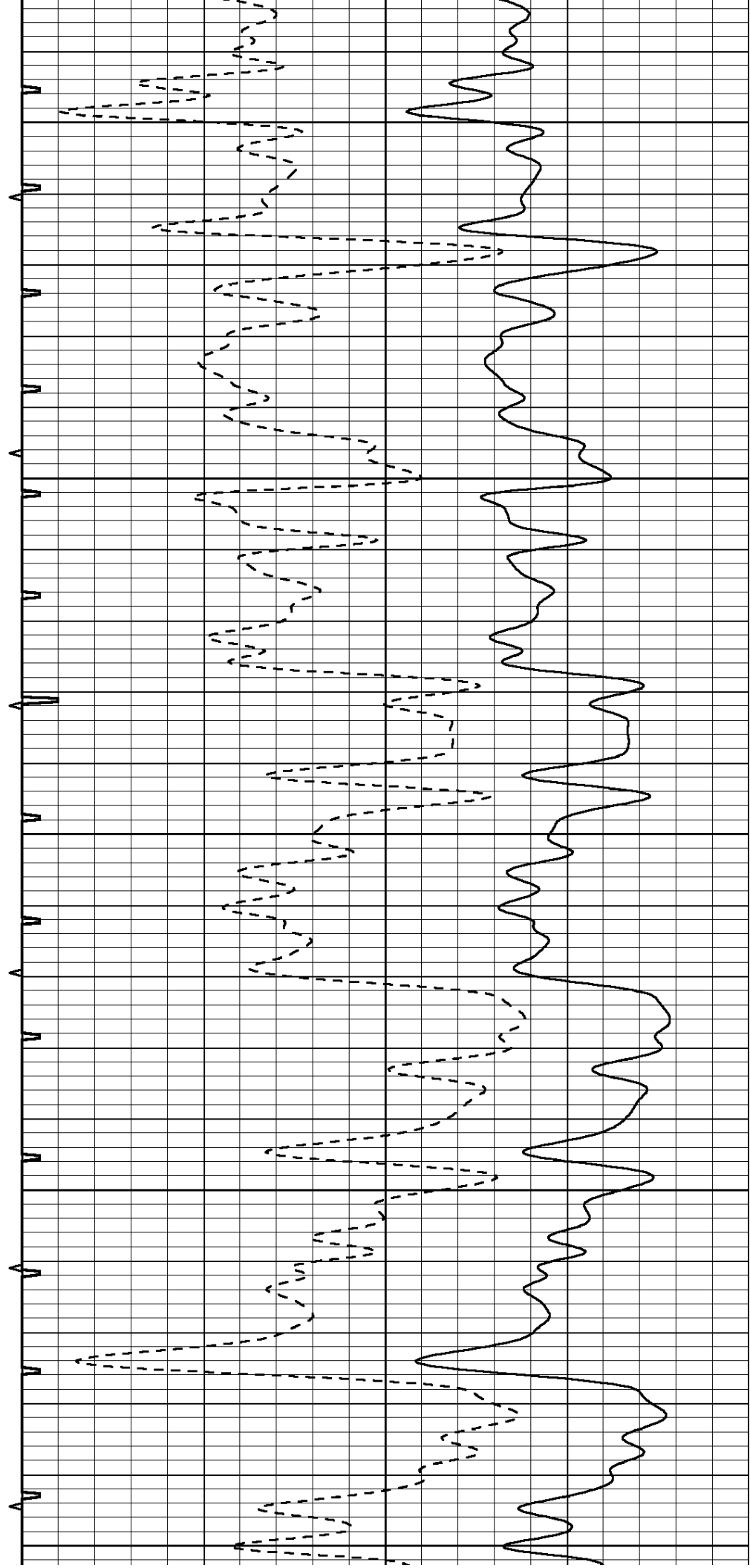
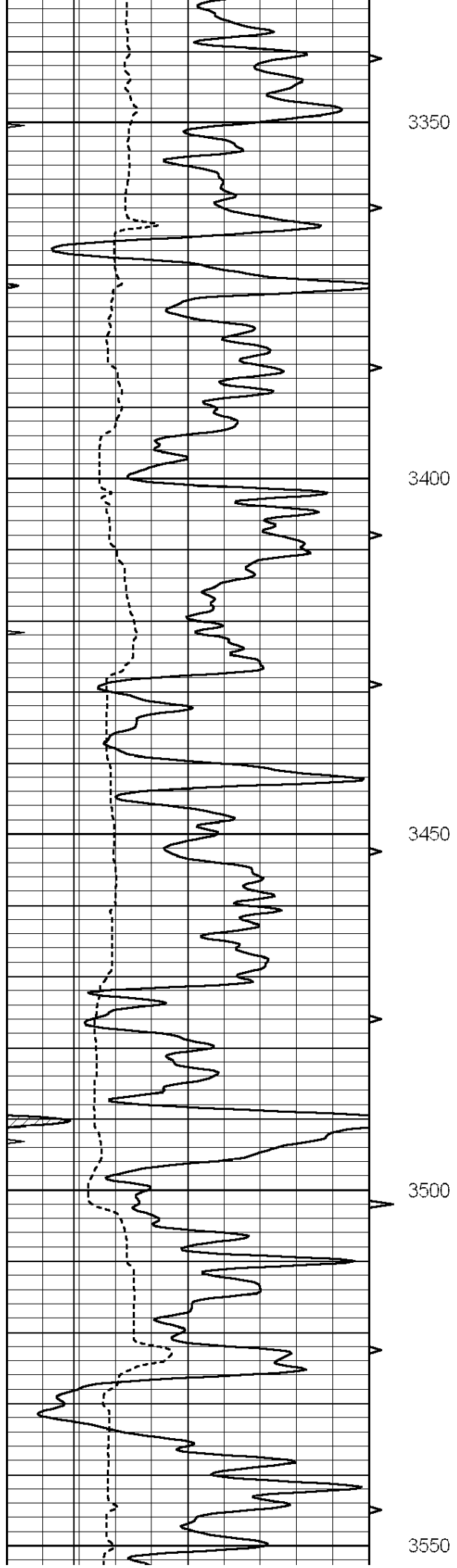
3150

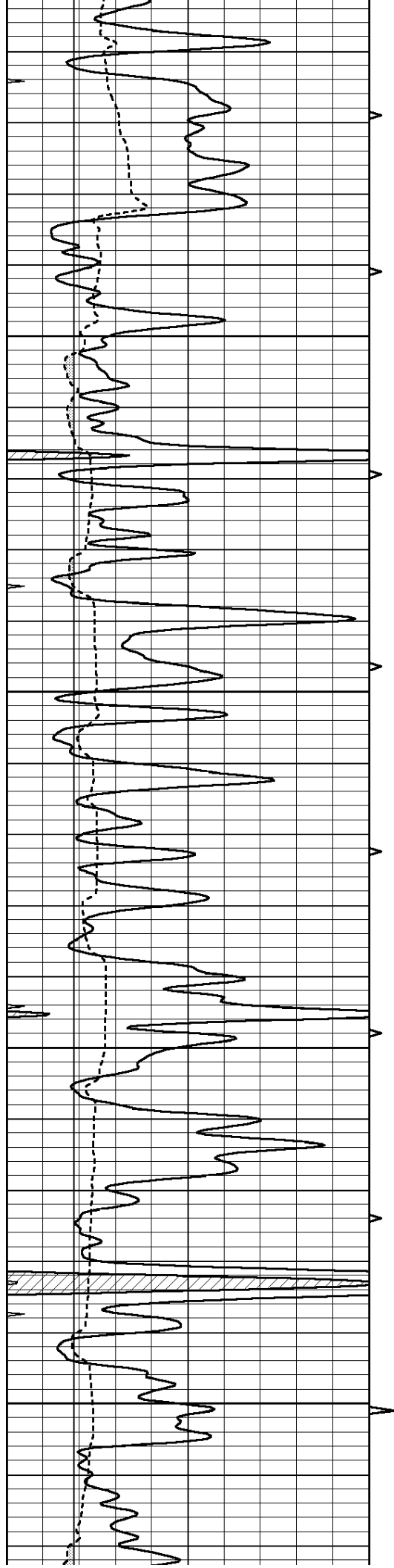
3200

3250

3300





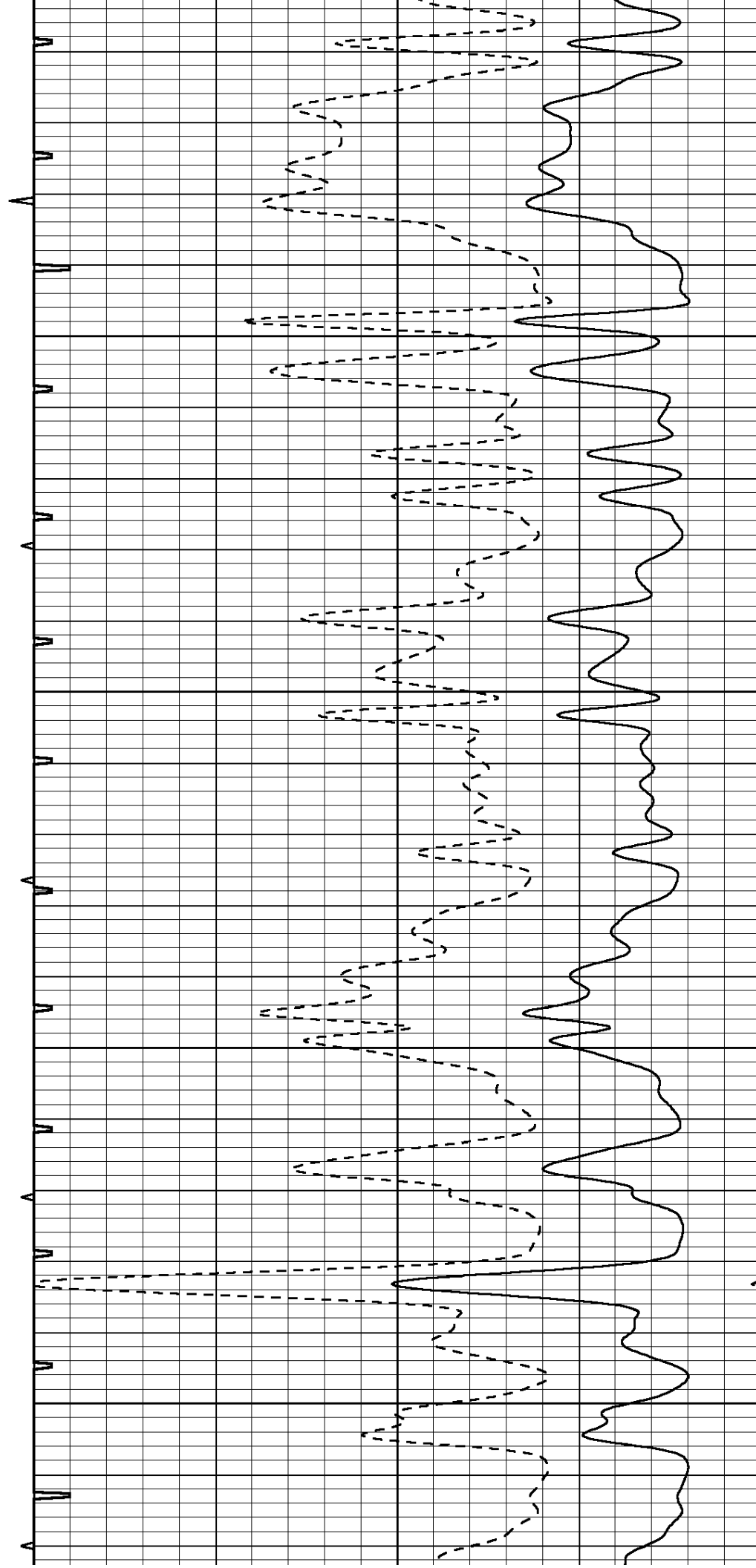


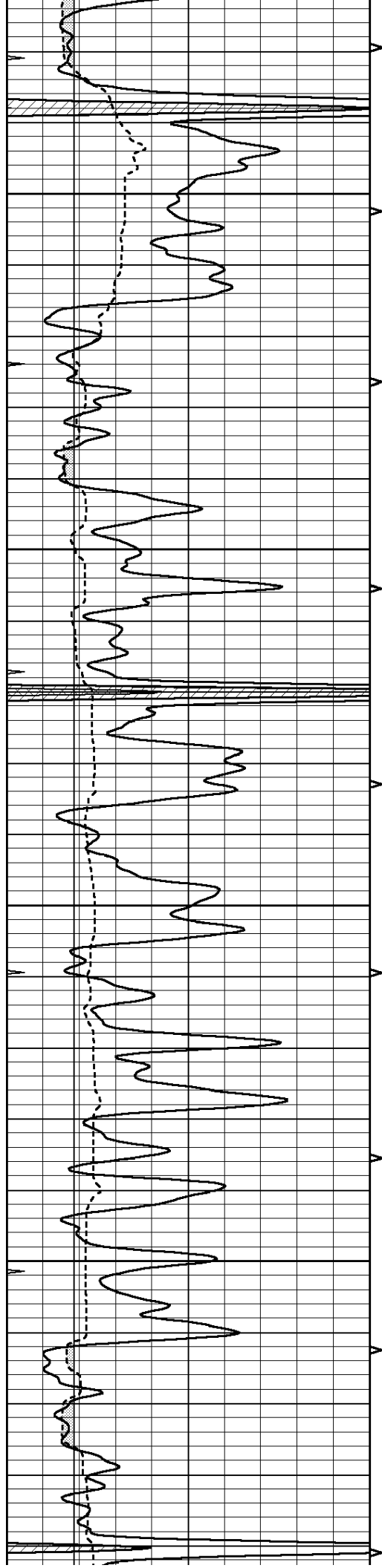
3600

3650

3700

3750



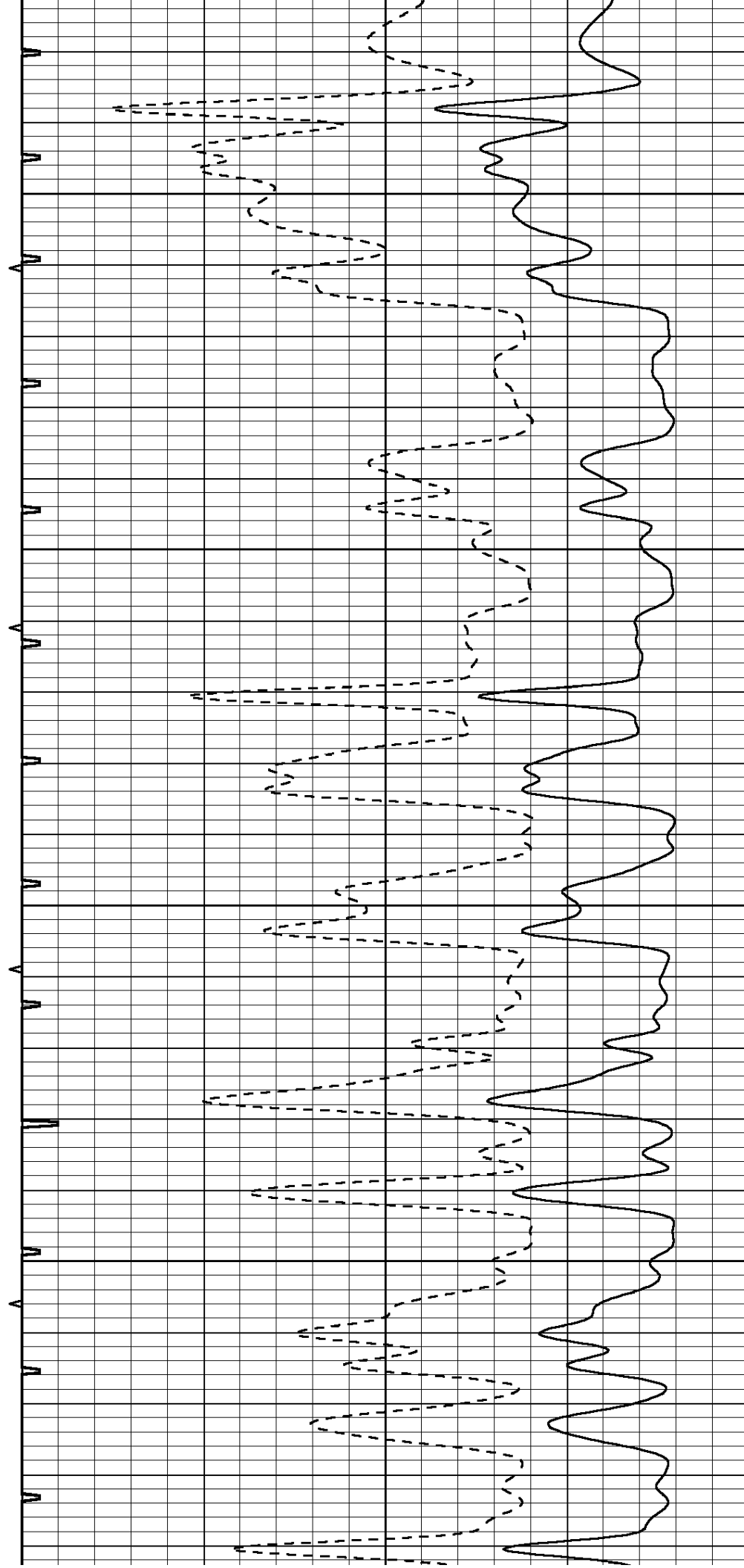


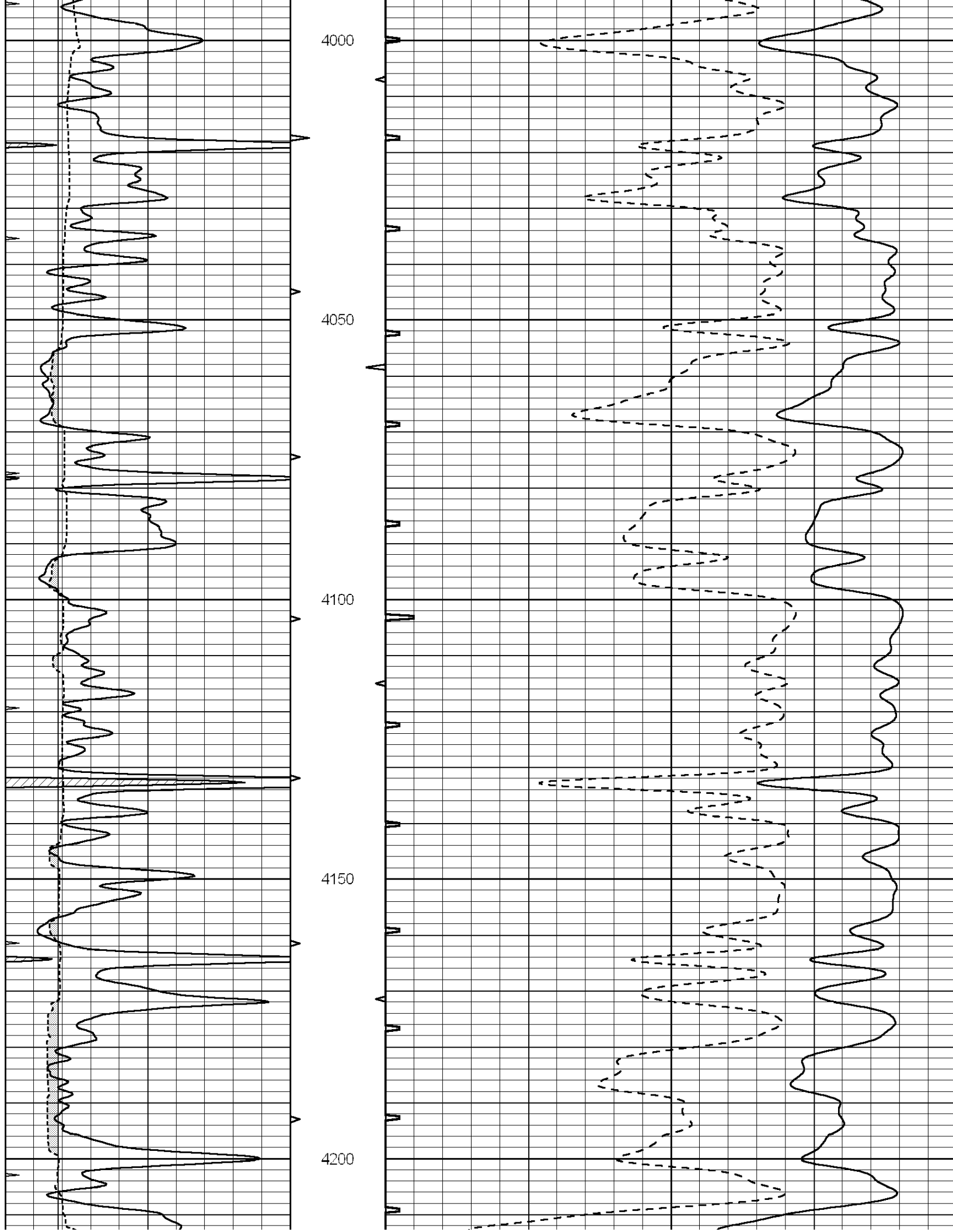
3800

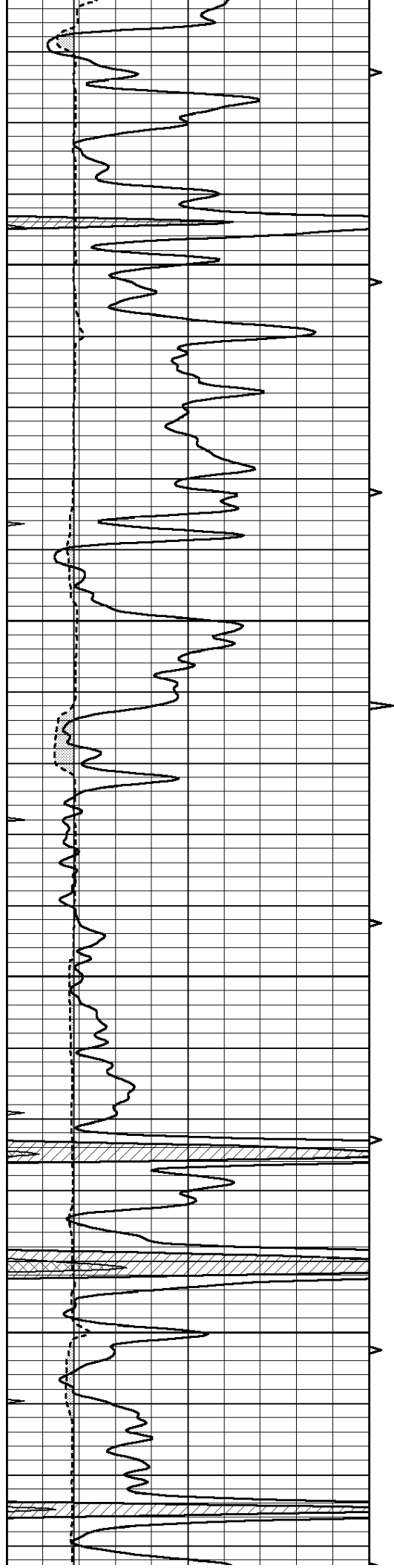
3850

3900

3950





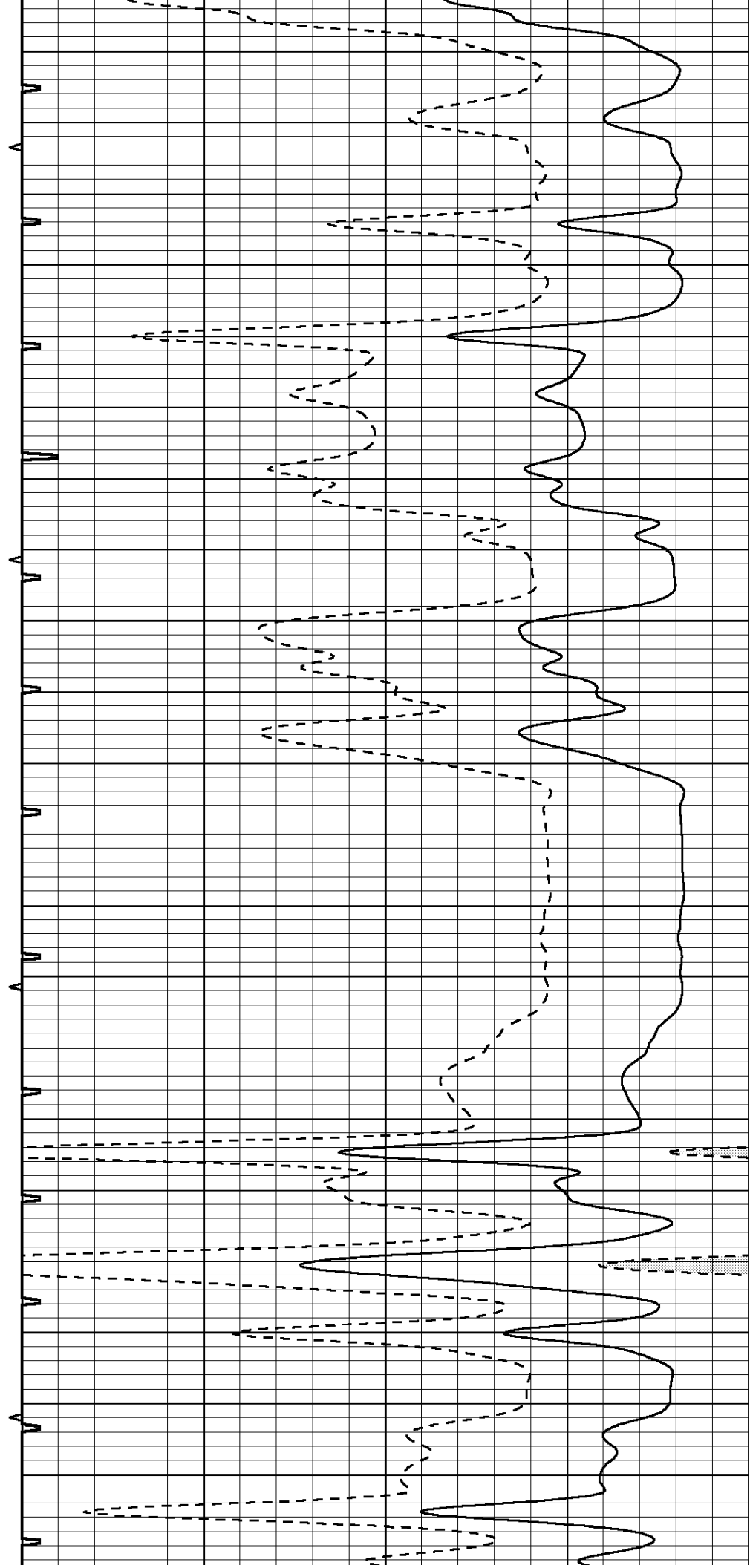


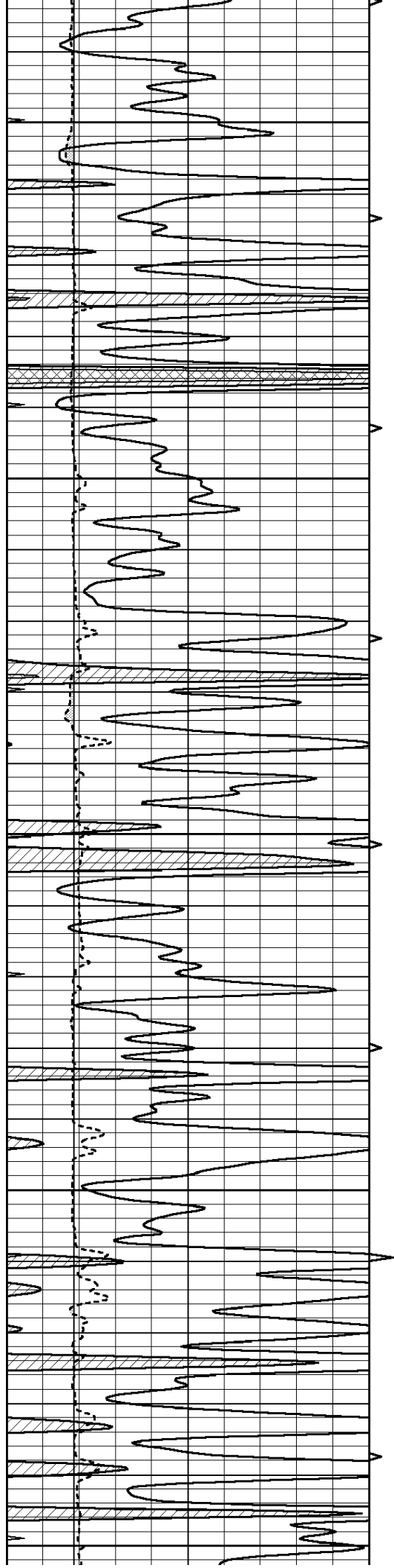
4250

4300

4350

4400





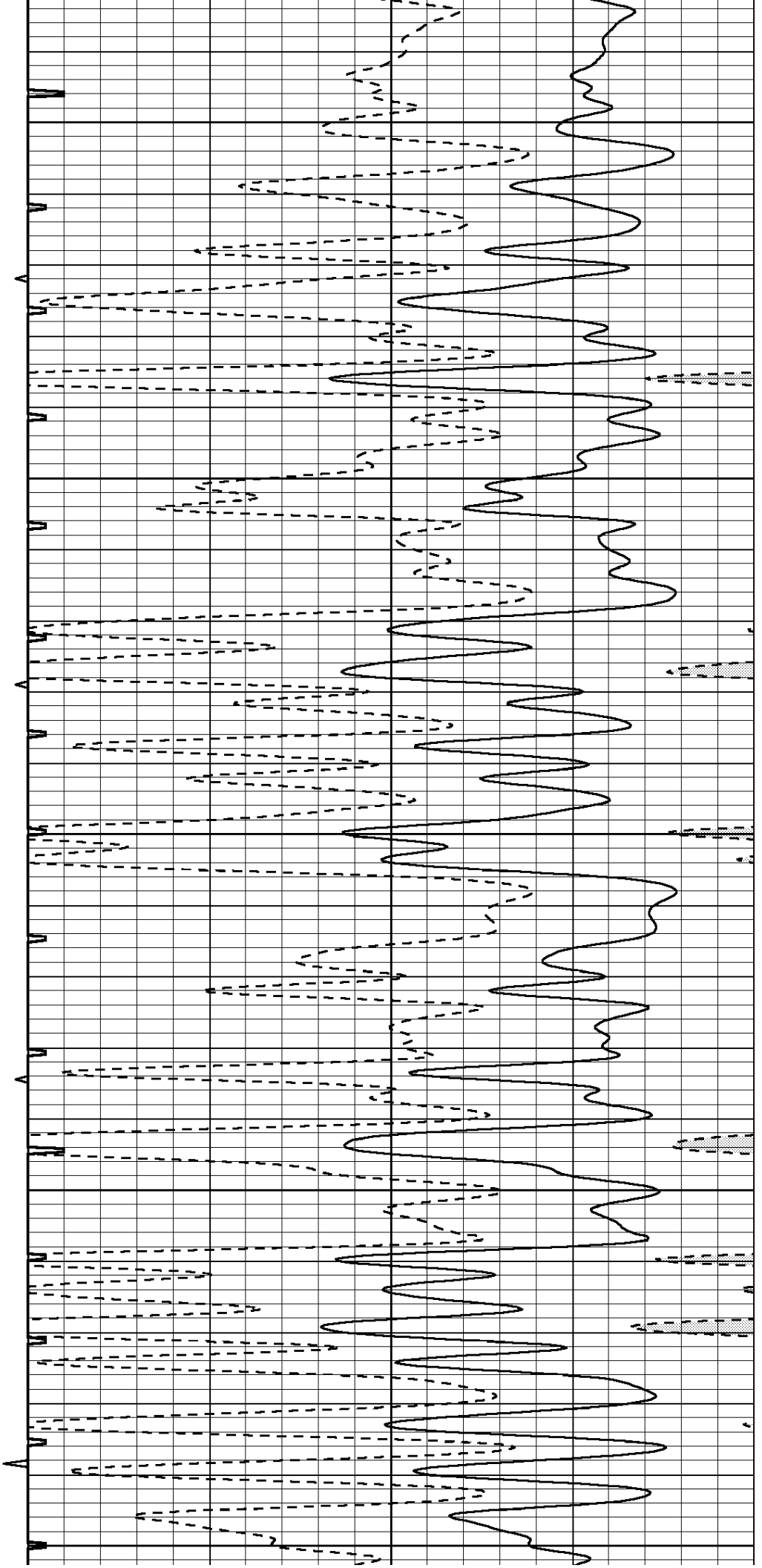
4450

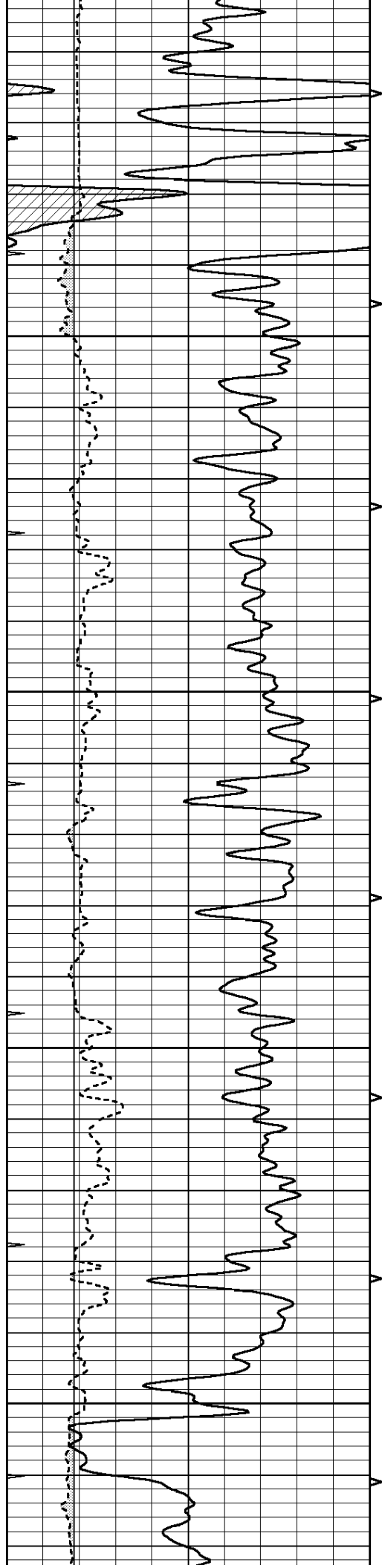
4500

4550

4600

4650



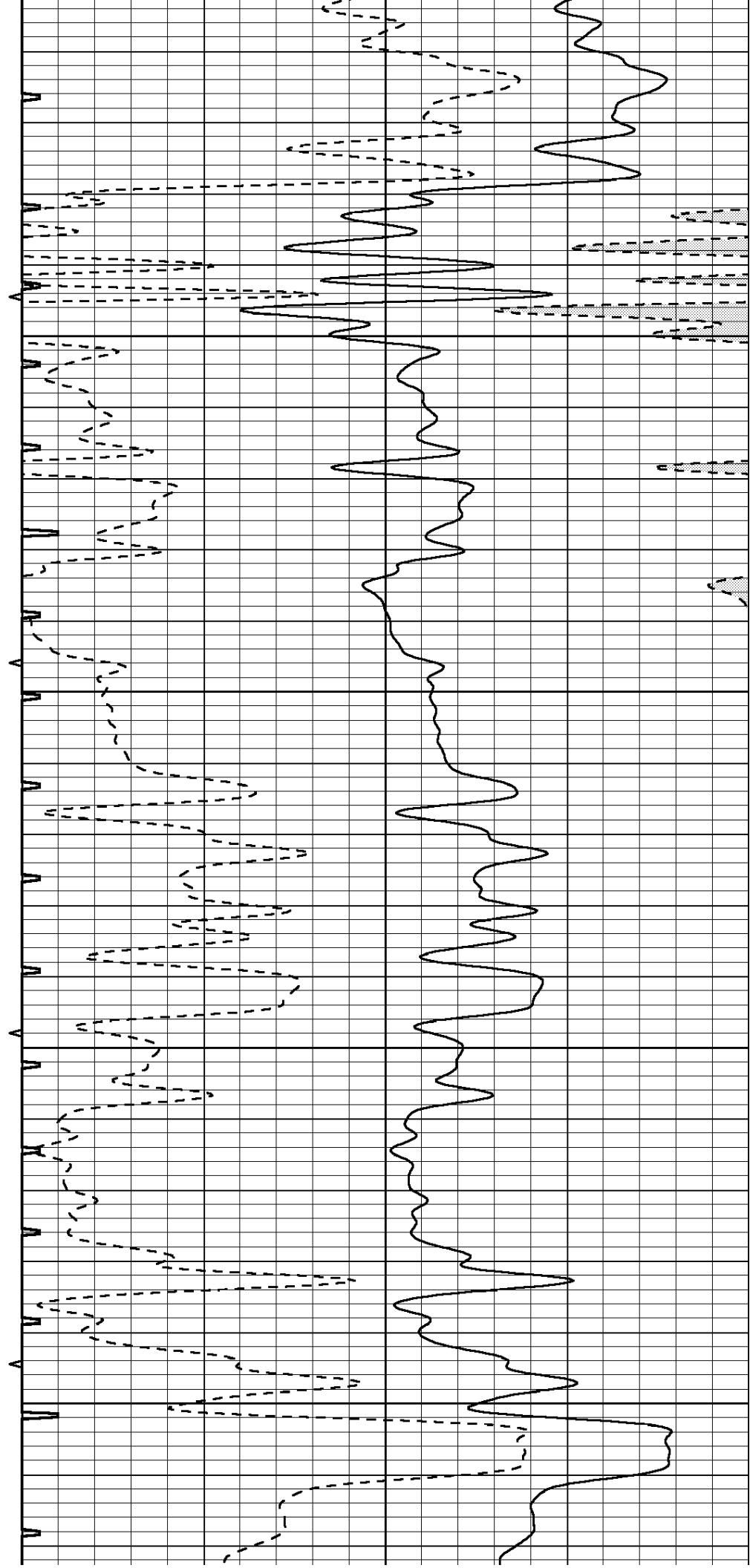


4700

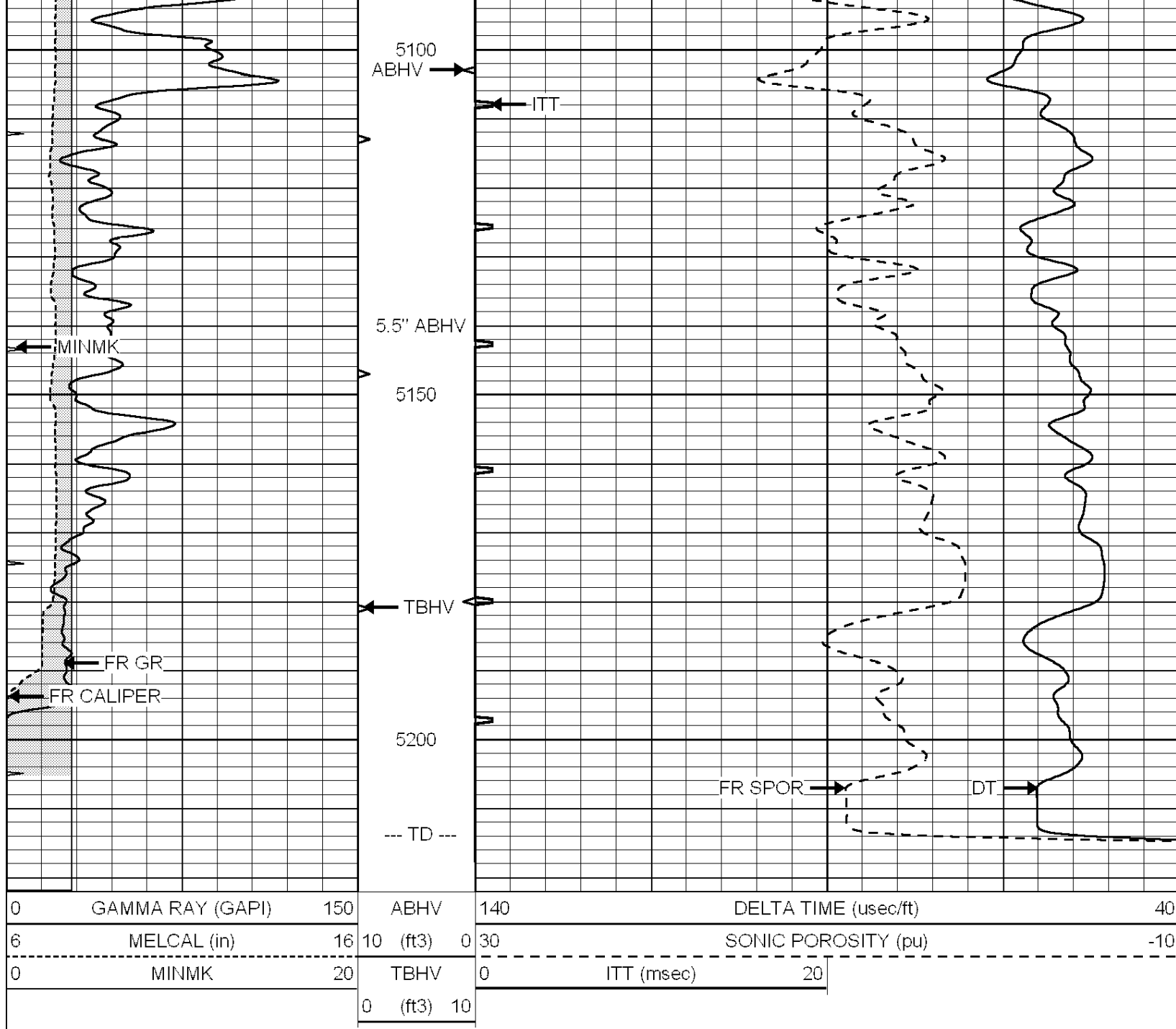
4750

4800

4850



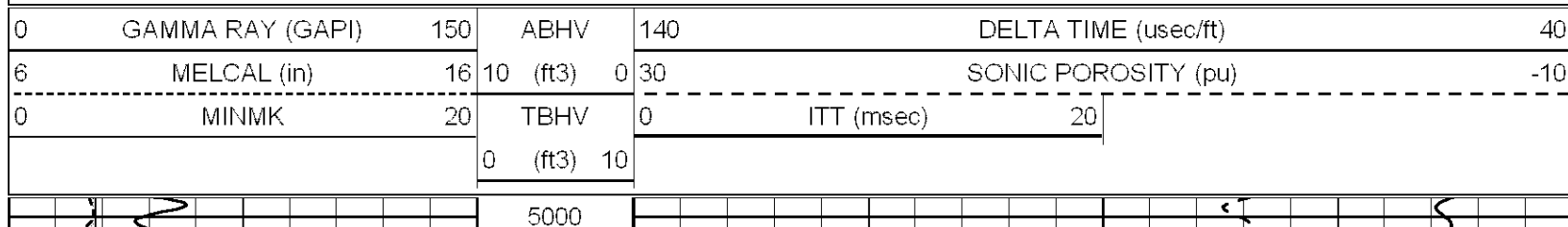


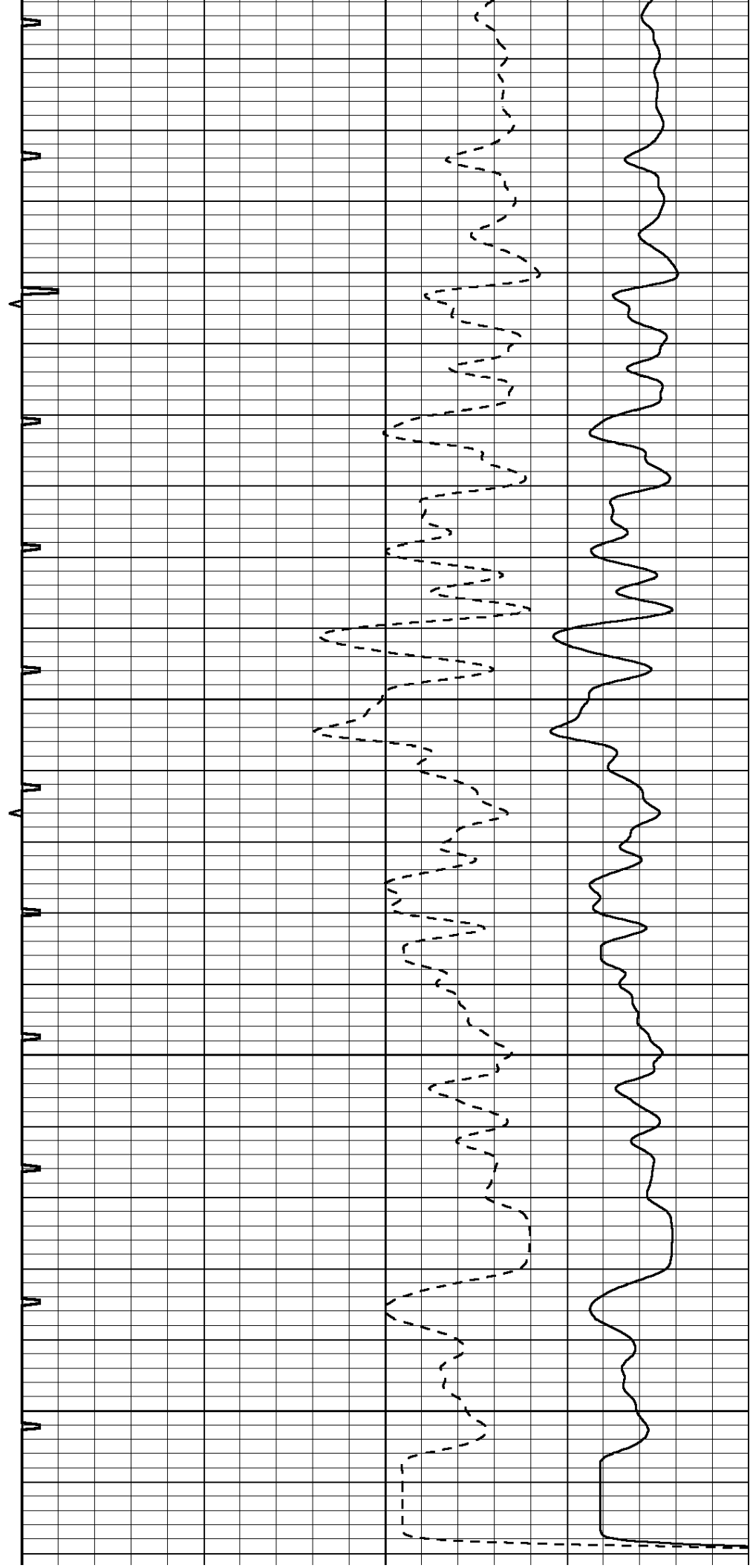
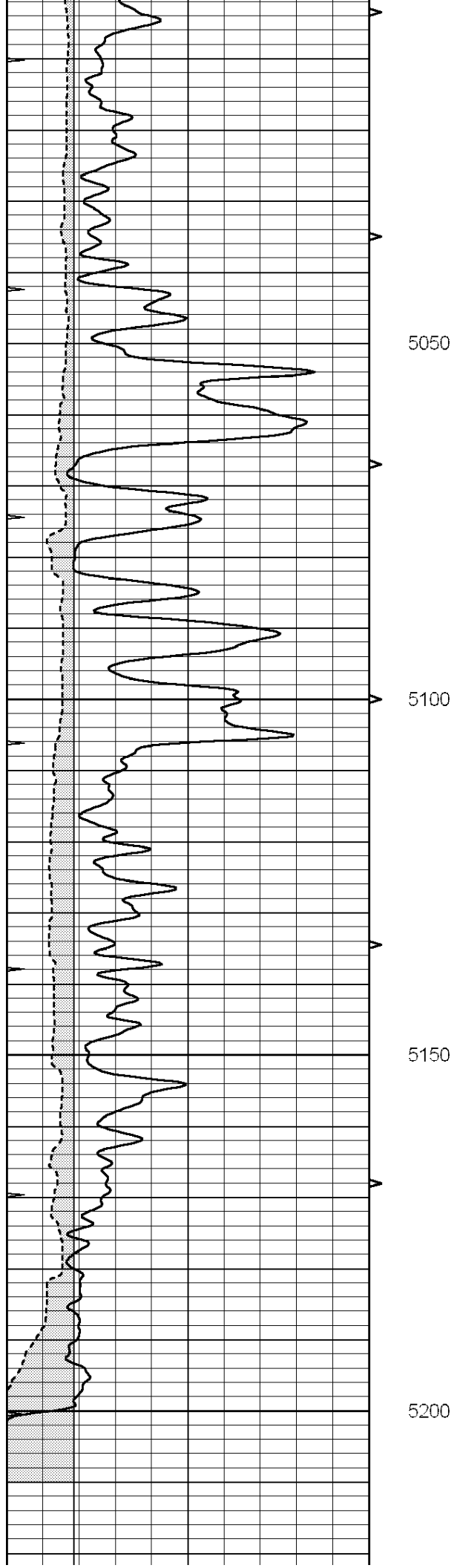


SUPERIOR
Hays,
Kansas

REPEAT SECTION

Database File: 007342pdn.db
 Dataset Pathname: pass4
 Presentation Format: slt
 Dataset Creation: Fri Aug 05 06:00:08 2011 by Log Open-Cased 090629
 Charted by: Depth in Feet scaled 1:240





0	GAMMA RAY (GAPI)	150	ABHV	140	DELTA TIME (usec/ft)	40
6	MELCAL (in)	16	10 (ft3) 0	30	SONIC POROSITY (pu)	-10
0	MINMK	20	TBHV	0	ITT (msec)	20
			0 (ft3) 10			