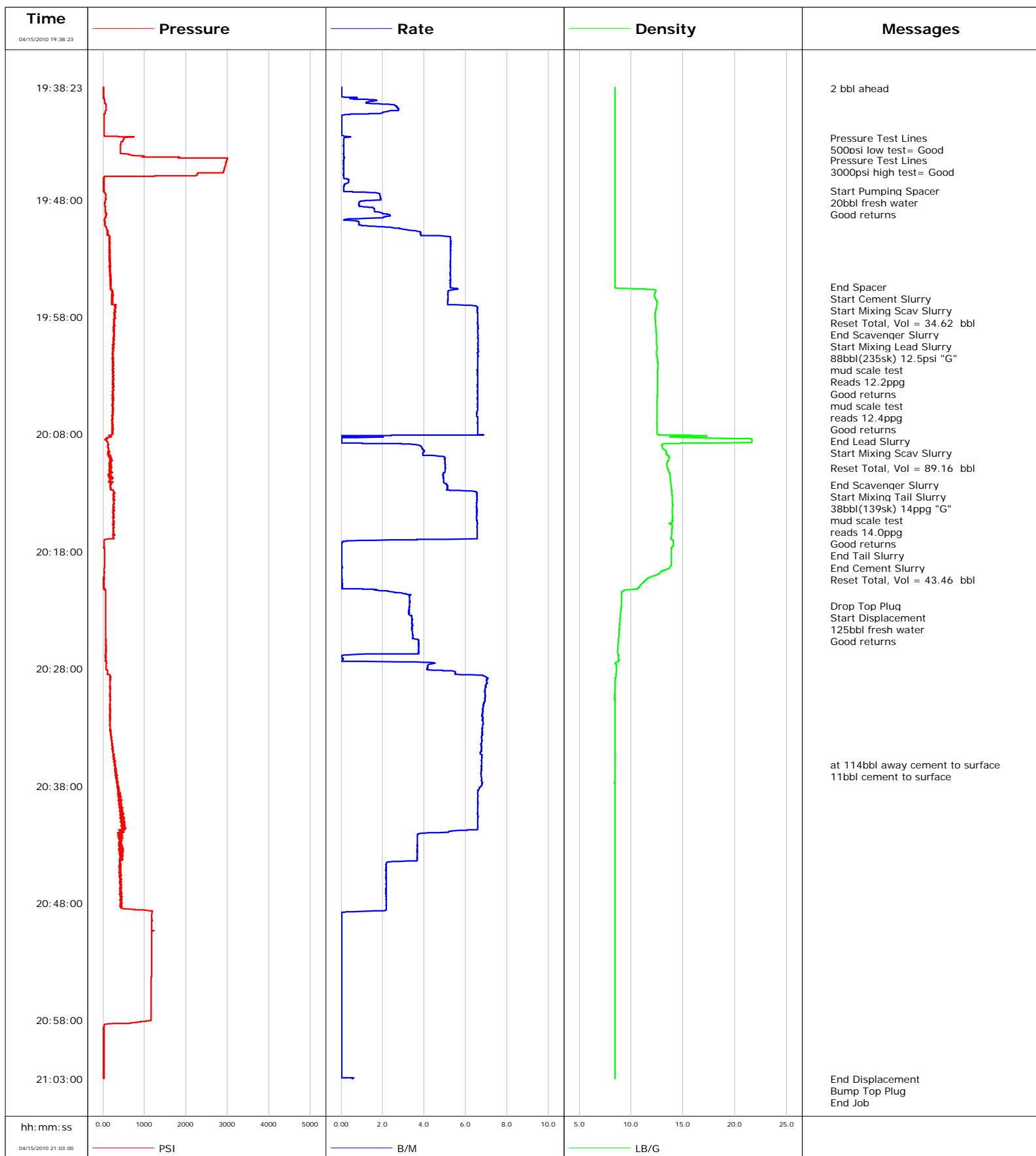


**Well** WF13B-22 K22 596  
**Field** N. PARACHUTE  
**Engineer** Dustin Krueger  
**Country** United States

**Client** ENCANA OIL GAS  
**SIR No.** 000347420  
**Job Type** 9 5/8 SURFACE  
**Job Date** 03-30-2010



Page 1 of 3

Well WF12B-22 K22 596 WF12B-22			Field N. PARACHUTE		Job Start Apr/15/2010		Customer ENCANA OIL & GAS		Job Number 000347420	
Date	Time 24-hr clock	Treating Pressure PSI	Flow Rate B/M	Density LB/G	Volume BBL	Message				
04/15/2010	19:50:00	37	0.9	8.46	7.4					
04/15/2010	19:55:00	194	5.3	8.46	31.1					
04/15/2010	19:55:27					End Spacer				
04/15/2010	19:55:27	190	5.3	8.46	33.4					
04/15/2010	19:55:29					Start Cement Slurry				
04/15/2010	19:55:29	183	5.3	8.46	33.6					
04/15/2010	19:55:31					Start Mixing Scav Slurry				
04/15/2010	19:55:31	186	5.3	8.46	33.8					
04/15/2010	19:55:40					Reset Total, Vol = 34.62 bbl				
04/15/2010	19:55:40	208	5.4	12.15	34.6					
04/15/2010	19:56:34					End Scavenger Slurry				
04/15/2010	19:56:34	216	5.1	12.44	39.3					
04/15/2010	19:56:35					Start Mixing Lead Slurry				
04/15/2010	19:56:35	223	5.1	12.44	39.4					
04/15/2010	19:56:37					88bbl(235sk) 12.5psi "G"				
04/15/2010	19:56:37					mud scale test				
04/15/2010	19:56:37					Reads 12.2ppg				
04/15/2010	19:56:37	211	5.1	12.46	39.5					
04/15/2010	19:56:39					Good returns				
04/15/2010	19:56:39	214	5.1	12.48	39.7					
04/15/2010	20:00:00	254	6.6	12.47	61.3					
04/15/2010	20:04:40					mud scale test				
04/15/2010	20:04:40	225	6.6	12.52	92.0					
04/15/2010	20:04:44					reads 12.4ppg				
04/15/2010	20:04:44	227	6.6	12.53	92.4					
04/15/2010	20:05:00	234	6.6	12.52	94.2					
04/15/2010	20:05:07					Good returns				
04/15/2010	20:05:07	237	6.6	12.51	94.9					
04/15/2010	20:08:35					End Lead Slurry				
04/15/2010	20:08:35	91	0.0	21.63	114.7					
04/15/2010	20:08:36					Start Mixing Scav Slurry				
04/15/2010	20:08:36	104	0.0	21.63	114.7					
04/15/2010	20:10:00	144	5.0	13.66	119.5					
04/15/2010	20:10:51					Reset Total, Vol = 89.16 bbl				
04/15/2010	20:10:51	214	5.0	13.50	123.8					
04/15/2010	20:12:19					End Scavenger Slurry				
04/15/2010	20:12:19	177	5.1	13.85	131.1					
04/15/2010	20:12:21					Start Mixing Tail Slurry				
04/15/2010	20:12:21	192	5.1	13.85	131.2					
04/15/2010	20:12:24					38bbl(139sk) 14ppg "G"				
04/15/2010	20:12:24					mud scale test				
04/15/2010	20:12:24	188	5.1	13.85	131.5					
04/15/2010	20:12:25					reads 14.0ppg				
04/15/2010	20:12:25					Good returns				
04/15/2010	20:12:25	189	5.1	13.86	131.6					
04/15/2010	20:15:00	239	6.5	14.00	147.9					
04/15/2010	20:17:15					End Tail Slurry				
04/15/2010	20:17:15	27	0.0	14.07	161.1					
04/15/2010	20:17:18					End Cement Slurry				
04/15/2010	20:17:18	27	0.0	14.07	161.1					
04/15/2010	20:18:11					Reset Total, Vol = 43.46 bbl				
04/15/2010	20:18:11	45	0.0	13.87	161.1					
04/15/2010	20:20:00	31	0.0	12.50	161.2					
04/15/2010	20:22:38					Drop Top Plug				

Well			Field		Job Start		Customer		Job Number	
WF12B-22 K22 596 WF12B-22			N. PARACHUTE		Apr/15/2010		ENCANA OIL & GAS		000347420	
Date	Time 24-hr clock	Treating Pressure PSI		Flow Rate B/M	Density LB/G		Volume BBL	Message		
04/15/2010	20:22:42							Start Displacement		
04/15/2010	20:22:42	67		3.3	9.06		165.7			
04/15/2010	20:22:46							125bbl fresh water		
04/15/2010	20:22:46	68		3.3	9.05		165.9			
04/15/2010	20:22:47							Good returns		
04/15/2010	20:22:47	68		3.3	9.05		165.9			
04/15/2010	20:25:00	67		3.4	8.84		173.4			
04/15/2010	20:30:00	173		6.9	8.45		195.4			
04/15/2010	20:35:00	233		6.7	8.44		229.5			
04/15/2010	20:36:12							at 114bbl away cement to surface		
04/15/2010	20:36:12	306		6.8	8.45		237.6			
04/15/2010	20:36:13							11bbl cement to surface		
04/15/2010	20:36:13	306		6.8	8.45		237.7			
04/15/2010	20:40:00	445		6.6	8.46		263.0			
04/15/2010	20:45:00	430		2.2	8.45		286.2			
04/15/2010	20:50:00	1175		0.0	8.46		294.3			
04/15/2010	20:55:00	1166		0.0	8.46		294.3			
04/15/2010	21:00:00	18		0.0	8.46		294.3			
04/15/2010	21:03:00	19		0.5	8.47		294.3			
04/15/2010	21:03:00							End Displacement		
04/15/2010	21:03:00							Bump Top Plug		
04/15/2010	21:03:00							End Job		

Post Job Summary

Average Pump Rates,					Volume of Fluid Injected, bbl			
Slurry	N2	Mud	Maximum Rate		Total Slurry 1260.0	Mud	Spacer 20.0	N2
Treating Pressure Summary, psi					Breakdown Fluid			
Maximum 3000	Final 1100	Average 250	Bump Plug to 1100	Breakdown 200	Type FreshWater	Volume 299.0 bbl		Density 8.34 lb/gal
Avg. N2 Percent		Designed Slurry Volume 126.0 bbl	Displacement 125.3 bbl	Mix Water Temp 60 degF	Cement Circulated to Surface? <input checked="" type="checkbox"/>		Volume 11.0 bbl	
					Washed Thru Perfs <input type="checkbox"/>		To	
Customer or Authorized Representative ED ASCHUAK			Schlumberger Supervisor Dustin Krueger			Circulation Lost <input type="checkbox"/>		Job Completed <input checked="" type="checkbox"/>
						-		-