

US ROCKIES REGION PLANNING

COLORADO NORTHERN ZONE - 83

WELD_CAMP PAD

CAMP 29N-25HZ

CAMP 29N-25HZ

Plan: CAMP 29N-25HZ (wp01)

Standard Planning Report

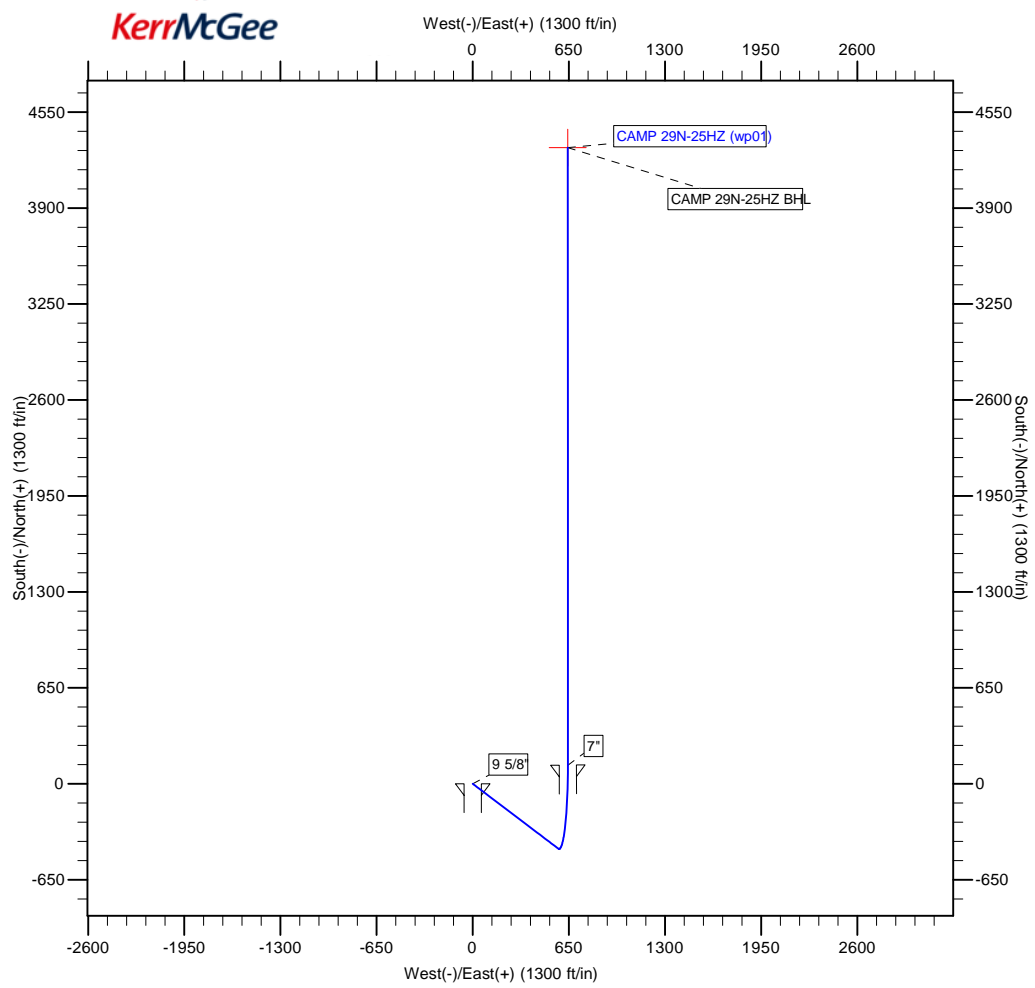
16 August, 2011





Azimuths to True North
 Magnetic North: 8.62°
 Magnetic Field
 Strength: 53013.3nT
 Dip Angle: 66.88°
 Date: 7/18/2011
 Model: IGRF2010

Project: COLORADO NORTHERN ZONE - 83
Site: WELD_CAMP PAD
Well: CAMP 29N-25HZ
Wellbore: CAMP 29N-25HZ
Section: SHL:
Design: CAMP 29N-25HZ (wp01)
Latitude: 40.190392
Longitude: -104.733114
GL: 5043.00
KB: 17' RKB + 5043' GL @ 5060.00ft



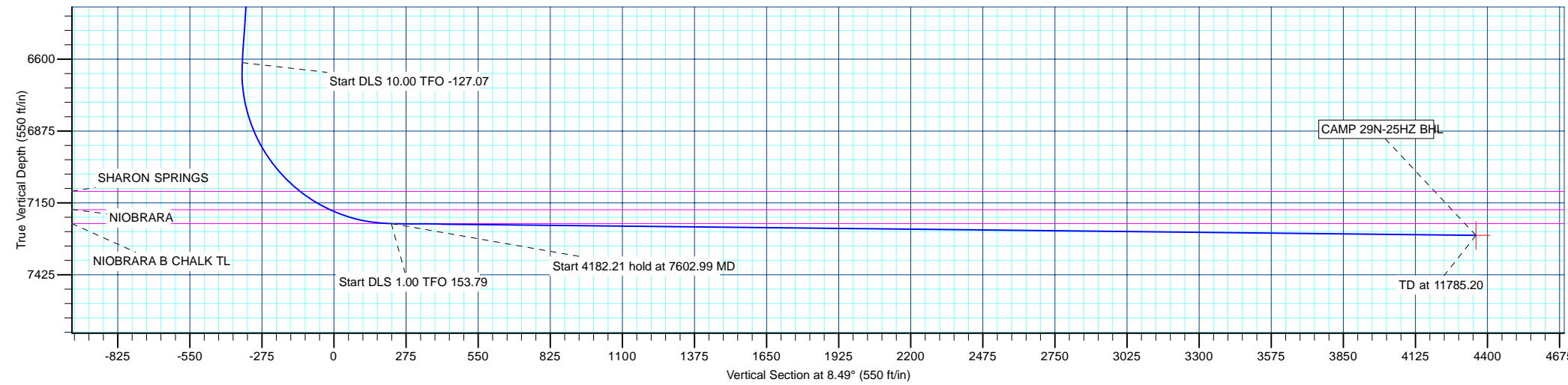
WELL DETAILS: CAMP 29N-25HZ						
+N/-S	+E/-W	Northing	Ground Level: Easting	5043.00 Latitude	Longitude	Slot
0.00	0.00	1313128.84	3214243.39	40.190392	-104.733114	

WELLBORE TARGET DETAILS (MAP CO-ORDINATES AND LAT/LONG)						
Name	TVD	+N/-S	+E/-W	Latitude	Longitude	Shape
CAMP 29N-25HZ BHL	7274.00	4308.40	643.00	40.202219	-104.730812	Point

SECTION DETAILS									
MD	Inc	Azi	TVD	+N/-S	+E/-W	Dleg	TFace	Vsect	Target
0.00	0.00	0.00	0.00	0.00	0.00	0.00	0.00	0.00	
1000.00	0.00	0.00	1000.00	0.00	0.00	0.00	0.00	0.00	
1382.05	7.64	127.23	1380.92	-15.39	20.25	2.00	127.23	-12.23	
6661.39	7.64	127.23	6613.38	-440.12	579.15	0.00	0.00	-349.81	
7601.56	89.40	359.98	7229.00	125.00	644.00	10.00	-127.07	218.69	
7602.99	89.38	359.99	7229.02	126.43	644.00	1.00	153.79	220.11	
11785.20	89.38	359.99	7274.00	4308.40	643.00	0.00	0.00	4356.12	CAMP 29N-25HZ BHL

FORMATION TOP DETAILS		
TVDPath	MDPath	Formation
3340.00	3358.68	PARKMAN
4476.00	4504.86	SUSSEX
5257.00	5292.86	SHANNON
7106.00	7223.96	SHARON SPRINGS
7176.00	7358.45	NIOBRARA
7229.00	7601.56	NIOBRARA B CHALK TL

CASING DETAILS			
TVD	MD	Name	Size
850.00	850.00	9 5/8"	9-5/8
7229.00	7601.56	7"	7



Database:	edm5000p	Local Co-ordinate Reference:	Well CAMP 29N-25HZ
Company:	US ROCKIES REGION PLANNING	TVD Reference:	17' RKB + 5043' GL @ 5060.00ft
Project:	COLORADO NORTHERN ZONE - 83	MD Reference:	17' RKB + 5043' GL @ 5060.00ft
Site:	WELD_CAMP PAD	North Reference:	True
Well:	CAMP 29N-25HZ	Survey Calculation Method:	Minimum Curvature
Wellbore:	CAMP 29N-25HZ		
Design:	CAMP 29N-25HZ (wp01)		

Project	COLORADO NORTHERN ZONE - 83		
Map System:	US State Plane 1983	System Datum:	Mean Sea Level
Geo Datum:	North American Datum 1983		
Map Zone:	Colorado Northern Zone		

Site		WELD_CAMP PAD			
Site Position:		Northing:	1,313,189.35 ft	Latitude:	40.190458
From:	Lat/Long	Easting:	3,218,417.67 ft	Longitude:	-104.718171
Position Uncertainty:	0.00 ft	Slot Radius:	0 "	Grid Convergence:	0.51 °

Well	CAMP 29N-25HZ					
Well Position	+N/-S	-23.71 ft	Northing:	1,313,128.84 ft	Latitude:	40.190392
	+E/-W	-4,174.65 ft	Easting:	3,214,243.39 ft	Longitude:	-104.733114
Position Uncertainty		0.00 ft	Wellhead Elevation:		Ground Level:	5,043.00 ft

Wellbore	CAMP 29N-25HZ				
Magnetics	Model Name	Sample Date	Declination (°)	Dip Angle (°)	Field Strength (nT)
	IGRF2010	7/18/2011	8.82	66.88	53,013

Design	CAMP 29N-25HZ (wp01)			
Audit Notes:				
Version:	Phase:	PLAN	Tie On Depth:	0.00
Vertical Section:	Depth From (TVD)	+N/-S (ft)	+E/-W (ft)	Direction (°)
	0.00	0.00	0.00	8.49

Plan Sections										
Measured Depth (ft)	Inclination (°)	Azimuth (°)	Vertical Depth (ft)	+N/-S (ft)	+E/-W (ft)	Dogleg Rate (°/100ft)	Build Rate (°/100ft)	Turn Rate (°/100ft)	TFO (°)	Target
0.00	0.00	0.00	0.00	0.00	0.00	0.00	0.00	0.00	0.00	
1,000.00	0.00	0.00	1,000.00	0.00	0.00	0.00	0.00	0.00	0.00	
1,382.05	7.64	127.23	1,380.92	-15.39	20.25	2.00	2.00	0.00	127.23	
6,661.39	7.64	127.23	6,613.38	-440.12	579.15	0.00	0.00	0.00	0.00	
7,601.56	89.40	359.98	7,229.00	125.00	644.00	10.00	8.70	-13.54	-127.07	
7,602.99	89.38	359.99	7,229.02	126.43	644.00	1.00	-0.90	0.44	153.79	
11,785.20	89.38	359.99	7,274.00	4,308.40	643.00	0.00	0.00	0.00	0.00	CAMP 29N-25HZ BHI

Database:	edm5000p	Local Co-ordinate Reference:	Well CAMP 29N-25HZ
Company:	US ROCKIES REGION PLANNING	TVD Reference:	17' RKB + 5043' GL @ 5060.00ft
Project:	COLORADO NORTHERN ZONE - 83	MD Reference:	17' RKB + 5043' GL @ 5060.00ft
Site:	WELD_CAMP PAD	North Reference:	True
Well:	CAMP 29N-25HZ	Survey Calculation Method:	Minimum Curvature
Wellbore:	CAMP 29N-25HZ		
Design:	CAMP 29N-25HZ (wp01)		

Planned Survey									
Measured Depth (ft)	Inclination (°)	Azimuth (°)	Vertical Depth (ft)	+N/-S (ft)	+E/-W (ft)	Vertical Section (ft)	Dogleg Rate (°/100ft)	Build Rate (°/100ft)	Turn Rate (°/100ft)
0.00	0.00	0.00	0.00	0.00	0.00	0.00	0.00	0.00	0.00
100.00	0.00	0.00	100.00	0.00	0.00	0.00	0.00	0.00	0.00
200.00	0.00	0.00	200.00	0.00	0.00	0.00	0.00	0.00	0.00
300.00	0.00	0.00	300.00	0.00	0.00	0.00	0.00	0.00	0.00
400.00	0.00	0.00	400.00	0.00	0.00	0.00	0.00	0.00	0.00
500.00	0.00	0.00	500.00	0.00	0.00	0.00	0.00	0.00	0.00
600.00	0.00	0.00	600.00	0.00	0.00	0.00	0.00	0.00	0.00
700.00	0.00	0.00	700.00	0.00	0.00	0.00	0.00	0.00	0.00
800.00	0.00	0.00	800.00	0.00	0.00	0.00	0.00	0.00	0.00
850.00	0.00	0.00	850.00	0.00	0.00	0.00	0.00	0.00	0.00
9 5/8"									
900.00	0.00	0.00	900.00	0.00	0.00	0.00	0.00	0.00	0.00
1,000.00	0.00	0.00	1,000.00	0.00	0.00	0.00	0.00	0.00	0.00
Start Build 2.00									
1,100.00	2.00	127.23	1,099.98	-1.06	1.39	-0.84	2.00	2.00	0.00
1,200.00	4.00	127.23	1,199.84	-4.22	5.56	-3.36	2.00	2.00	0.00
1,300.00	6.00	127.23	1,299.45	-9.50	12.50	-7.55	2.00	2.00	0.00
1,382.05	7.64	127.23	1,380.92	-15.39	20.25	-12.23	2.00	2.00	0.00
Start 5279.34 hold at 1382.05 MD									
1,400.00	7.64	127.23	1,398.71	-16.84	22.15	-13.38	0.00	0.00	0.00
1,500.00	7.64	127.23	1,497.82	-24.88	32.74	-19.78	0.00	0.00	0.00
1,600.00	7.64	127.23	1,596.93	-32.93	43.33	-26.17	0.00	0.00	0.00
1,700.00	7.64	127.23	1,696.05	-40.97	53.91	-32.56	0.00	0.00	0.00
1,800.00	7.64	127.23	1,795.16	-49.02	64.50	-38.96	0.00	0.00	0.00
1,900.00	7.64	127.23	1,894.27	-57.06	75.09	-45.35	0.00	0.00	0.00
2,000.00	7.64	127.23	1,993.38	-65.11	85.67	-51.75	0.00	0.00	0.00
2,100.00	7.64	127.23	2,092.49	-73.15	96.26	-58.14	0.00	0.00	0.00
2,200.00	7.64	127.23	2,191.61	-81.20	106.85	-64.54	0.00	0.00	0.00
2,300.00	7.64	127.23	2,290.72	-89.24	117.43	-70.93	0.00	0.00	0.00
2,400.00	7.64	127.23	2,389.83	-97.29	128.02	-77.32	0.00	0.00	0.00
2,500.00	7.64	127.23	2,488.94	-105.33	138.60	-83.72	0.00	0.00	0.00
2,600.00	7.64	127.23	2,588.05	-113.38	149.19	-90.11	0.00	0.00	0.00
2,700.00	7.64	127.23	2,687.17	-121.42	159.78	-96.51	0.00	0.00	0.00
2,800.00	7.64	127.23	2,786.28	-129.47	170.36	-102.90	0.00	0.00	0.00
2,900.00	7.64	127.23	2,885.39	-137.51	180.95	-109.30	0.00	0.00	0.00
3,000.00	7.64	127.23	2,984.50	-145.56	191.54	-115.69	0.00	0.00	0.00
3,100.00	7.64	127.23	3,083.61	-153.60	202.12	-122.08	0.00	0.00	0.00
3,200.00	7.64	127.23	3,182.73	-161.65	212.71	-128.48	0.00	0.00	0.00
3,300.00	7.64	127.23	3,281.84	-169.69	223.30	-134.87	0.00	0.00	0.00
3,358.68	7.64	127.23	3,340.00	-174.41	229.51	-138.63	0.00	0.00	0.00
PARKMAN									
3,400.00	7.64	127.23	3,380.95	-177.74	233.88	-141.27	0.00	0.00	0.00
3,500.00	7.64	127.23	3,480.06	-185.78	244.47	-147.66	0.00	0.00	0.00
3,600.00	7.64	127.23	3,579.17	-193.83	255.06	-154.06	0.00	0.00	0.00
3,700.00	7.64	127.23	3,678.29	-201.87	265.64	-160.45	0.00	0.00	0.00
3,800.00	7.64	127.23	3,777.40	-209.92	276.23	-166.84	0.00	0.00	0.00
3,900.00	7.64	127.23	3,876.51	-217.96	286.82	-173.24	0.00	0.00	0.00
4,000.00	7.64	127.23	3,975.62	-226.01	297.40	-179.63	0.00	0.00	0.00
4,100.00	7.64	127.23	4,074.74	-234.05	307.99	-186.03	0.00	0.00	0.00
4,200.00	7.64	127.23	4,173.85	-242.10	318.57	-192.42	0.00	0.00	0.00
4,300.00	7.64	127.23	4,272.96	-250.14	329.16	-198.82	0.00	0.00	0.00
4,400.00	7.64	127.23	4,372.07	-258.19	339.75	-205.21	0.00	0.00	0.00
4,500.00	7.64	127.23	4,471.18	-266.23	350.33	-211.61	0.00	0.00	0.00
4,504.86	7.64	127.23	4,476.00	-266.63	350.85	-211.92	0.00	0.00	0.00

Database:	edm5000p	Local Co-ordinate Reference:	Well CAMP 29N-25HZ
Company:	US ROCKIES REGION PLANNING	TVD Reference:	17' RKB + 5043' GL @ 5060.00ft
Project:	COLORADO NORTHERN ZONE - 83	MD Reference:	17' RKB + 5043' GL @ 5060.00ft
Site:	WELD_CAMP PAD	North Reference:	True
Well:	CAMP 29N-25HZ	Survey Calculation Method:	Minimum Curvature
Wellbore:	CAMP 29N-25HZ		
Design:	CAMP 29N-25HZ (wp01)		

Planned Survey									
Measured Depth (ft)	Inclination (°)	Azimuth (°)	Vertical Depth (ft)	+N/-S (ft)	+E/-W (ft)	Vertical Section (ft)	Dogleg Rate (°/100ft)	Build Rate (°/100ft)	Turn Rate (°/100ft)
SUSSEX									
4,600.00	7.64	127.23	4,570.30	-274.28	360.92	-218.00	0.00	0.00	0.00
4,700.00	7.64	127.23	4,669.41	-282.32	371.51	-224.39	0.00	0.00	0.00
4,800.00	7.64	127.23	4,768.52	-290.37	382.09	-230.79	0.00	0.00	0.00
4,900.00	7.64	127.23	4,867.63	-298.41	392.68	-237.18	0.00	0.00	0.00
5,000.00	7.64	127.23	4,966.74	-306.46	403.27	-243.58	0.00	0.00	0.00
5,100.00	7.64	127.23	5,065.86	-314.50	413.85	-249.97	0.00	0.00	0.00
5,200.00	7.64	127.23	5,164.97	-322.55	424.44	-256.37	0.00	0.00	0.00
5,292.86	7.64	127.23	5,257.00	-330.02	434.27	-262.30	0.00	0.00	0.00
SHANNON									
5,300.00	7.64	127.23	5,264.08	-330.60	435.03	-262.76	0.00	0.00	0.00
5,400.00	7.64	127.23	5,363.19	-338.64	445.61	-269.15	0.00	0.00	0.00
5,500.00	7.64	127.23	5,462.30	-346.69	456.20	-275.55	0.00	0.00	0.00
5,600.00	7.64	127.23	5,561.42	-354.73	466.79	-281.94	0.00	0.00	0.00
5,700.00	7.64	127.23	5,660.53	-362.78	477.37	-288.34	0.00	0.00	0.00
5,800.00	7.64	127.23	5,759.64	-370.82	487.96	-294.73	0.00	0.00	0.00
5,900.00	7.64	127.23	5,858.75	-378.87	498.55	-301.13	0.00	0.00	0.00
6,000.00	7.64	127.23	5,957.86	-386.91	509.13	-307.52	0.00	0.00	0.00
6,100.00	7.64	127.23	6,056.98	-394.96	519.72	-313.91	0.00	0.00	0.00
6,200.00	7.64	127.23	6,156.09	-403.00	530.30	-320.31	0.00	0.00	0.00
6,300.00	7.64	127.23	6,255.20	-411.05	540.89	-326.70	0.00	0.00	0.00
6,400.00	7.64	127.23	6,354.31	-419.09	551.48	-333.10	0.00	0.00	0.00
6,500.00	7.64	127.23	6,453.42	-427.14	562.06	-339.49	0.00	0.00	0.00
6,600.00	7.64	127.23	6,552.54	-435.18	572.65	-345.89	0.00	0.00	0.00
6,661.39	7.64	127.23	6,613.38	-440.12	579.15	-349.81	0.00	0.00	0.00
Start DLS 10.00 TFO -127.07									
6,700.00	6.14	97.07	6,651.72	-441.93	583.24	-351.00	10.00	-3.89	-78.13
6,800.00	11.05	33.03	6,750.76	-434.53	593.80	-342.12	10.00	4.91	-64.03
6,900.00	20.14	16.83	6,847.02	-409.96	604.03	-316.30	10.00	9.09	-16.21
7,000.00	29.81	10.65	6,937.58	-368.94	613.63	-274.32	10.00	9.67	-6.18
7,100.00	39.63	7.32	7,019.68	-312.74	622.31	-217.45	10.00	9.82	-3.33
7,200.00	49.52	5.14	7,090.83	-243.05	629.80	-147.43	10.00	9.88	-2.18
7,223.96	51.89	4.72	7,106.00	-224.58	631.39	-128.92	10.00	9.91	-1.77
SHARON SPRINGS									
7,300.00	59.43	3.53	7,148.87	-162.00	635.87	-66.37	10.00	9.92	-1.56
7,358.45	65.23	2.74	7,176.00	-110.33	638.69	-14.85	10.00	9.93	-1.35
NIOBRARA									
7,400.00	69.36	2.22	7,192.03	-72.05	640.35	23.26	10.00	9.93	-1.25
7,500.00	79.30	1.07	7,219.01	24.07	643.08	118.73	10.00	9.94	-1.15
7,600.00	89.24	360.00	7,228.98	123.44	644.00	217.15	10.00	9.94	-1.07
7,601.56	89.40	359.98	7,229.00	125.00	644.00	218.69	10.00	9.94	-1.06
Start DLS 1.00 TFO 153.79 - NIOBRARA B CHALK TL - 7"									
7,602.99	89.38	359.99	7,229.02	126.43	644.00	220.11	1.00	-0.90	0.44
Start 4182.21 hold at 7602.99 MD									
7,700.00	89.38	359.99	7,230.06	223.44	643.98	316.05	0.00	0.00	0.00
7,800.00	89.38	359.99	7,231.13	323.43	643.95	414.94	0.00	0.00	0.00
7,900.00	89.38	359.99	7,232.21	423.42	643.93	513.84	0.00	0.00	0.00
8,000.00	89.38	359.99	7,233.29	523.42	643.90	612.73	0.00	0.00	0.00
8,100.00	89.38	359.99	7,234.36	623.41	643.88	711.63	0.00	0.00	0.00
8,200.00	89.38	359.99	7,235.44	723.41	643.86	810.52	0.00	0.00	0.00
8,300.00	89.38	359.99	7,236.51	823.40	643.83	909.42	0.00	0.00	0.00
8,400.00	89.38	359.99	7,237.59	923.40	643.81	1,008.31	0.00	0.00	0.00
8,500.00	89.38	359.99	7,238.66	1,023.39	643.79	1,107.21	0.00	0.00	0.00

Database:	edm5000p	Local Co-ordinate Reference:	Well CAMP 29N-25HZ
Company:	US ROCKIES REGION PLANNING	TVD Reference:	17' RKB + 5043' GL @ 5060.00ft
Project:	COLORADO NORTHERN ZONE - 83	MD Reference:	17' RKB + 5043' GL @ 5060.00ft
Site:	WELD_CAMP PAD	North Reference:	True
Well:	CAMP 29N-25HZ	Survey Calculation Method:	Minimum Curvature
Wellbore:	CAMP 29N-25HZ		
Design:	CAMP 29N-25HZ (wp01)		

Planned Survey									
Measured Depth (ft)	Inclination (°)	Azimuth (°)	Vertical Depth (ft)	+N/-S (ft)	+E/-W (ft)	Vertical Section (ft)	Dogleg Rate (°/100ft)	Build Rate (°/100ft)	Turn Rate (°/100ft)
8,600.00	89.38	359.99	7,239.74	1,123.38	643.76	1,206.10	0.00	0.00	0.00
8,700.00	89.38	359.99	7,240.82	1,223.38	643.74	1,305.00	0.00	0.00	0.00
8,800.00	89.38	359.99	7,241.89	1,323.37	643.71	1,403.89	0.00	0.00	0.00
8,900.00	89.38	359.99	7,242.97	1,423.37	643.69	1,502.79	0.00	0.00	0.00
9,000.00	89.38	359.99	7,244.04	1,523.36	643.67	1,601.68	0.00	0.00	0.00
9,100.00	89.38	359.99	7,245.12	1,623.36	643.64	1,700.58	0.00	0.00	0.00
9,200.00	89.38	359.99	7,246.19	1,723.35	643.62	1,799.48	0.00	0.00	0.00
9,300.00	89.38	359.99	7,247.27	1,823.34	643.59	1,898.37	0.00	0.00	0.00
9,400.00	89.38	359.99	7,248.34	1,923.34	643.57	1,997.27	0.00	0.00	0.00
9,500.00	89.38	359.99	7,249.42	2,023.33	643.55	2,096.16	0.00	0.00	0.00
9,600.00	89.38	359.99	7,250.50	2,123.33	643.52	2,195.06	0.00	0.00	0.00
9,700.00	89.38	359.99	7,251.57	2,223.32	643.50	2,293.95	0.00	0.00	0.00
9,800.00	89.38	359.99	7,252.65	2,323.31	643.48	2,392.85	0.00	0.00	0.00
9,900.00	89.38	359.99	7,253.72	2,423.31	643.45	2,491.74	0.00	0.00	0.00
10,000.00	89.38	359.99	7,254.80	2,523.30	643.43	2,590.64	0.00	0.00	0.00
10,100.00	89.38	359.99	7,255.87	2,623.30	643.40	2,689.53	0.00	0.00	0.00
10,200.00	89.38	359.99	7,256.95	2,723.29	643.38	2,788.43	0.00	0.00	0.00
10,300.00	89.38	359.99	7,258.03	2,823.29	643.36	2,887.32	0.00	0.00	0.00
10,400.00	89.38	359.99	7,259.10	2,923.28	643.33	2,986.22	0.00	0.00	0.00
10,500.00	89.38	359.99	7,260.18	3,023.27	643.31	3,085.11	0.00	0.00	0.00
10,600.00	89.38	359.99	7,261.25	3,123.27	643.28	3,184.01	0.00	0.00	0.00
10,700.00	89.38	359.99	7,262.33	3,223.26	643.26	3,282.91	0.00	0.00	0.00
10,800.00	89.38	359.99	7,263.40	3,323.26	643.24	3,381.80	0.00	0.00	0.00
10,900.00	89.38	359.99	7,264.48	3,423.25	643.21	3,480.70	0.00	0.00	0.00
11,000.00	89.38	359.99	7,265.55	3,523.25	643.19	3,579.59	0.00	0.00	0.00
11,100.00	89.38	359.99	7,266.63	3,623.24	643.16	3,678.49	0.00	0.00	0.00
11,200.00	89.38	359.99	7,267.71	3,723.23	643.14	3,777.38	0.00	0.00	0.00
11,300.00	89.38	359.99	7,268.78	3,823.23	643.12	3,876.28	0.00	0.00	0.00
11,400.00	89.38	359.99	7,269.86	3,923.22	643.09	3,975.17	0.00	0.00	0.00
11,500.00	89.38	359.99	7,270.93	4,023.22	643.07	4,074.07	0.00	0.00	0.00
11,600.00	89.38	359.99	7,272.01	4,123.21	643.05	4,172.96	0.00	0.00	0.00
11,700.00	89.38	359.99	7,273.08	4,223.20	643.02	4,271.86	0.00	0.00	0.00
11,785.20	89.38	359.99	7,274.00	4,308.40	643.00	4,356.12	0.00	0.00	0.00
TD at 11785.20 - CAMP 29N-25HZ BHL									

Design Targets									
Target Name	Dip Angle (°)	Dip Dir. (°)	TVD (ft)	+N/-S (ft)	+E/-W (ft)	Northing (ft)	Easting (ft)	Latitude	Longitude
- hit/miss target									
- Shape									
CAMP 29N-25HZ BHL	0.00	0.00	7,274.00	4,308.40	643.00	1,317,442.64	3,214,849.11	40.202219	-104.730812
- plan hits target center									
- Point									

Casing Points					
Measured Depth (ft)	Vertical Depth (ft)	Name	Casing Diameter (")	Hole Diameter (")	
850.00	850.00	9 5/8"	9-5/8	12-1/4	
7,601.56	7,229.00	7"	7	8-3/4	

Database:	edm5000p	Local Co-ordinate Reference:	Well CAMP 29N-25HZ
Company:	US ROCKIES REGION PLANNING	TVD Reference:	17' RKB + 5043' GL @ 5060.00ft
Project:	COLORADO NORTHERN ZONE - 83	MD Reference:	17' RKB + 5043' GL @ 5060.00ft
Site:	WELD_CAMP PAD	North Reference:	True
Well:	CAMP 29N-25HZ	Survey Calculation Method:	Minimum Curvature
Wellbore:	CAMP 29N-25HZ		
Design:	CAMP 29N-25HZ (wp01)		

Formations					
Measured Depth (ft)	Vertical Depth (ft)	Name	Lithology	Dip (°)	Dip Direction (°)
3,358.68	3,340.00	PARKMAN		0.00	
4,504.86	4,476.00	SUSSEX		0.00	
5,292.86	5,257.00	SHANNON		0.00	
7,223.96	7,106.00	SHARON SPRINGS		0.00	
7,358.45	7,176.00	NIOBRARA		0.00	
7,601.56	7,229.00	NIOBRARA B CHALK TL		0.00	

Plan Annotations					
Measured Depth (ft)	Vertical Depth (ft)	Local Coordinates			
		+N/-S (ft)	+E/-W (ft)	Comment	
1,000.00	1,000.00	0.00	0.00	Start Build 2.00	
1,382.05	1,380.92	-15.39	20.25	Start 5279.34 hold at 1382.05 MD	
6,661.39	6,613.38	-440.12	579.15	Start DLS 10.00 TFO -127.07	
7,601.56	7,229.00	125.00	644.00	Start DLS 1.00 TFO 153.79	
7,602.99	7,229.02	126.43	644.00	Start 4182.21 hold at 7602.99 MD	
11,785.20	7,274.00	4,308.40	643.00	TD at 11785.20	