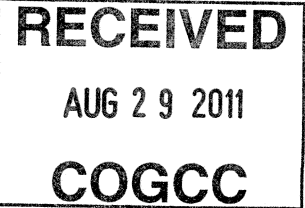




August 19, 2011

Director
Colorado Oil and Gas Conservation Commission
1120 Lincoln Street, Suite 801
Denver, CO 80203



Re: 20 Day Certification Letter – Rule 318 A(e)
SRC GCC 10VD
Township 5 North, Range 66 West
Section 10
Weld County, Colorado

Dear Director,

Synergy Resources Corporation (SRC) hereby certifies to the Director that SRC owns 100% interest in the proposed well bore spacing unit for the above said well. SRC hereby requests the Director to approve the Boundary well.

If you have any questions or issues regarding this permit, please contact Craig Rasmuson at (970) 737-1073.

Sincerely,

Craig Rasmuson

Craig Rasmuson
Synergy Resources Corporation

SRC GCC 10VD Sec. 10, T5N, R66W

DUKE US-5-16 • DUKE J 4-33
DUKE US-5-17 • DUKE US-5-18

• HEWLETHPACKARD 1

UPRC 3-12M • UPRC 3-11H6
UPRC 3-14H6 • UPRC 3-13H6
HERTZKE 1 • HERTZKE 2 • HERTZKE 3

• MCCLOSKEY 11-9 • MCCLOSKEY 9-3H6

AUSTIN J 8-4 • AUSTIN J 8-3
MCCLOSKEY 11-10 • MCCLOSKEY 11-10

MOEN J 8-4 • MOEN 8-4H6

• PEREZ 8-4H6 • MCCLOSKEY 8-4H6
PEREZ 8-5H6 • MCCLOSKEY 9-3H6

• MOEN J 8-4

• MOEN 8-4H6 • ELLIOTT 13-9 • ELLS 8-11H6

• DRAKE 8-2

• ELLIOTT 8-13H6

• ELLS 8-14H6

• EAST GREELEY LAND CO UNIT 1

• AIMS 2

• AIMS 1

• EISENHART 1

• HOUTCHENS-JOHNSON 1-17
PEPI STATE J 16-4

• FRANCIS STATE J 16-4

16

• PEPI STATE J 16-5

15

UPRC 15-2H6 • UPRC 15-1H6
UPRC 15-3H6 • UPRC 15-4H6

• UPRR-ZIMMERMAN 1

14

13

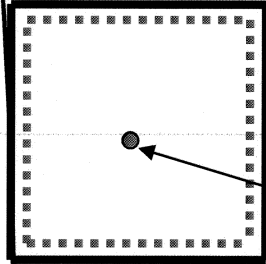
11

12

2

1

Hwy 34



Bottom Hole

LEGEND

— Synergy Resources Corporation Lease (Solid Line)

Proposed 160 Spacing Unit
Bottom Hole Located 1306' FNL & 75' FEL, Sec. 10, T5N, R66W

RECEIVED
AUG 29 2011
COGCC

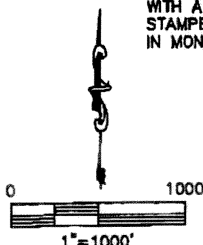
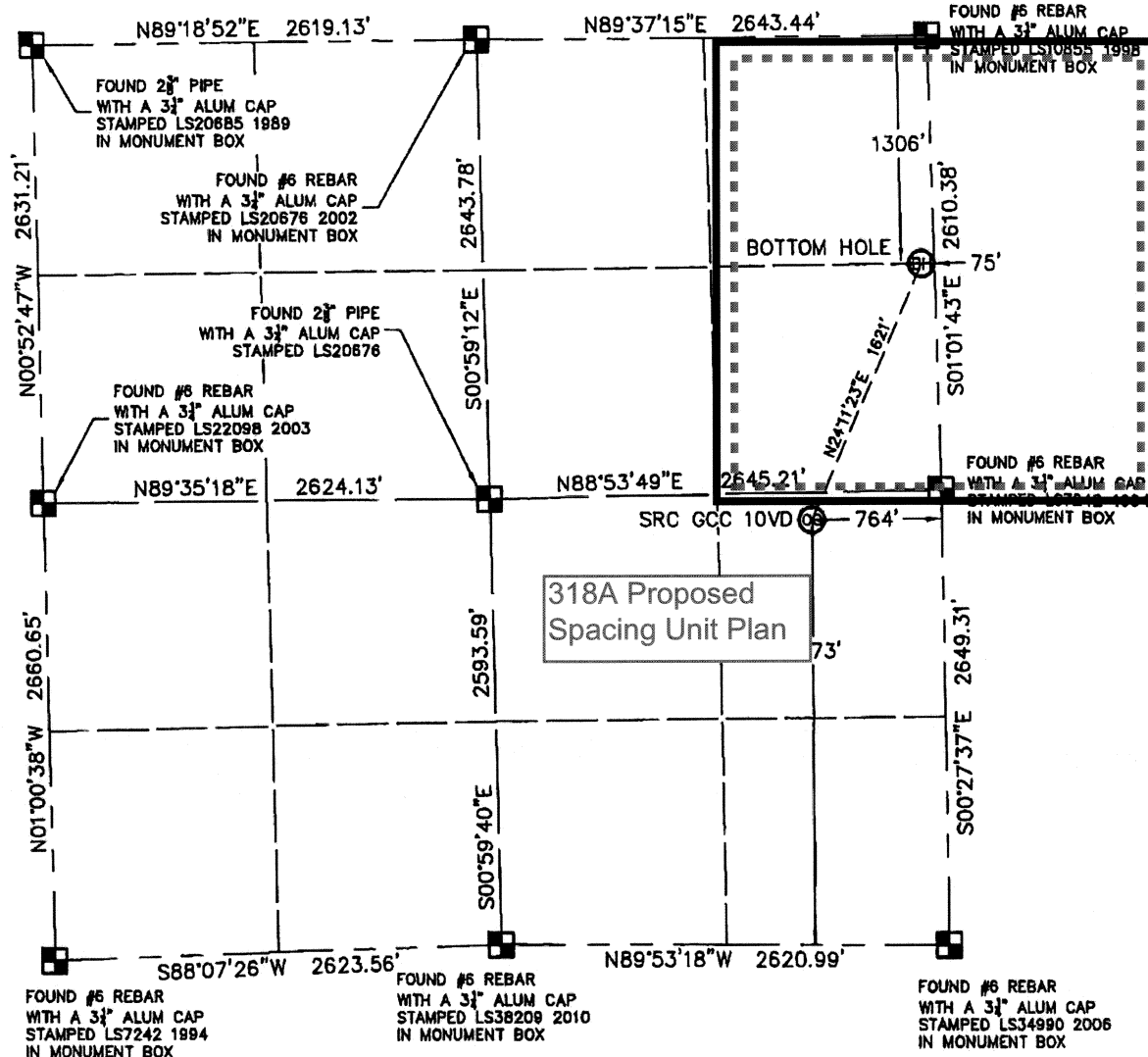
RECEIVED

AUG 29 2011

KING SURVEYORS, INC. 650 E. GARDEN DR. WINDSOR, CO 80550

WELL LOCATION CERTIFICATE**SRC GCC 10VD**

THIS MAP DOES NOT REPRESENT A BOUNDARY SURVEY

COGCCSECTION: 10
TOWNSHIP: 5N
RANGE: 66WIn accordance with a request from CRAIG RASMUSON with SYNERGY RESOURCES CORPORATIONKing Surveyors Inc. has determined the surface location of SRC GCC 10VD to be 2473' from the SOUTH line and 764' from the EAST line and the bottom hole to be 1306' from the NORTH line and 75' from the EAST line, as measured at right angles, from the section lines of Section 10, Township 5 North, Range 66 West of the Sixth Principal Meridian, County of Weld, State of Colorado.I hereby state that this Well Location Certificate was prepared by me, or under my direct supervision, that the fieldwork was completed on 8-15-2011, for and on behalf of SYNERGY RESOURCES CORPORATION. That this is not a Land Survey Plat or an Improvement Survey Plat, and that it is not to be relied upon for establishment of fence, building, or other future improvement lines.**NOTE:**

- 1) Bearings shown are Grid Bearings of the Colorado State Plane Coordinate System, North Zone, North American Datum 1983/2007. The lineal dimensions as contained herein are based upon the "U.S. Survey Foot."
- 2) Ground elevations are based on an observed GPS elevation (NAVD 1988 DATUM).
- 3) NEAREST EXISTING WELL: NO EXISTING WELLS IN THIS SECTION
- 4) IMPROVEMENTS: See LOCATION DRAWING exhibit for all visible improvements within 400' of disturbed area.
- 5) SURFACE USE: OPEN FIELD
- 6) FIELD OPERATOR: CHAD DILKA

NOTE

According to Colorado law, you must commence any legal action based upon any defect in this W.L.C. within three years after you discover such defect. In no event, may any action based upon any defect in this survey be commenced more than ten years after the date of the certificate shown hereon. (13-80-105 C.R.S.)

LEGEND

- = FOUND ALIQUOT MONUMENT AS DESCRIBED
- = CALCULATED POSITION
- = SET ALIQUOT MONUMENT AS DESCRIBED

SURFACE LOCATION
LATITUDE: 40.41368°N
LONGITUDE: 104.75903°W
PDOP: 1.7
ELEV: 4858'
1/4, 1/4: NE 1/4 SE 1/4
NEAREST PROPERTY LINE: 160' NORTHBOTTOM HOLE
LATITUDE: 40.41772°N
LONGITUDE: 104.75660°W

Michael Chad Dilka 8/17/2011
Michael Chad Dilka - On Behalf Of King Surveyors, Inc.
Colorado Licensed Professional Land Surveyor #38106

PROJECT#: 2011174