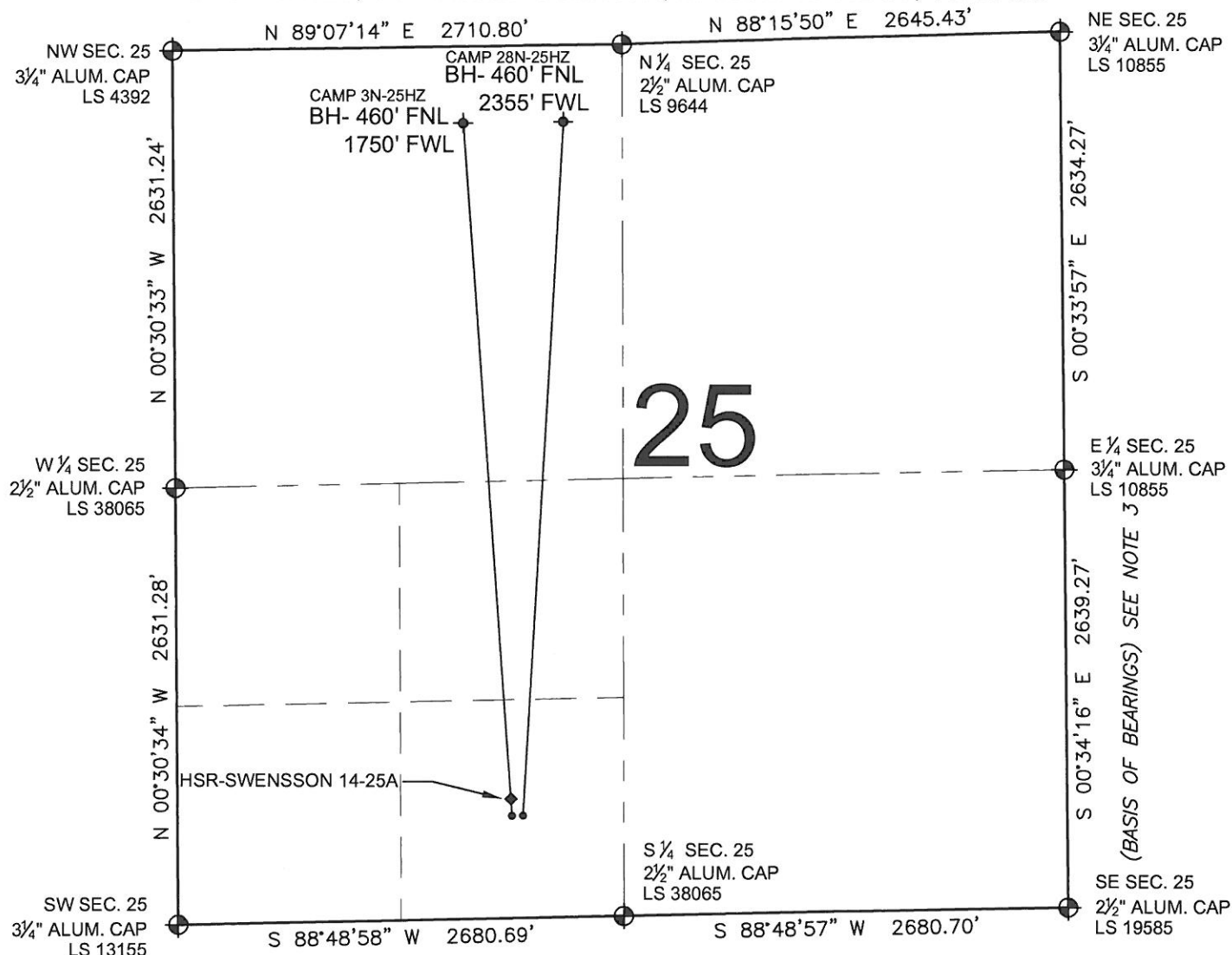


PAD DRAWING: CAMP 2 PAD

SECTION 25, TOWNSHIP 3 NORTH, RANGE 66 WEST, 6TH P.M.



LEGEND

- = EXISTING MONUMENT
 = BOTTOM HOLE
 BH= BOTTOM HOLE
 = PROPOSED WELL
 = EXISTING WELL

NOTES:

- THIS FIELD SURVEY CONFORMS TO THE MINIMUM STANDARDS SET BY THE C.O.G.C.C., RULE NO. 215
- HORIZONTAL POSITIONS AND ORTHOMETRIC ELEVATIONS SHOWN AT THE WELL HEAD, ARE BASED ON GPS-RTK POSITIONS DERIVED FROM MINIMUM 2-HOUR STATIC OBSERVATIONS CORRECTED BY THE NATIONAL GEODETIC SURVEY ONLINE POSITIONING USER SERVICE, O.P.U.S. DATUM: HORIZONTAL = NAD83/2007, VERTICAL = NAVD88
- THE BASIS OF BEARINGS ARE STATE PLANE COORDINATE SYSTEM GRID BEARINGS SHOWN HEREON BETWEEN THE DESCRIBED THE MONUMENTS SHOWN HEREON.
- GRID DISTANCES ARE SHOWN, AS MEASURED IN THE FIELD, WITH TIES TO WELLS MEASURED PERPENDICULAR TO SECTION LINES.

NOTES:

- CAMP 3N-25HZ TO BE AT 618' FSL, 2035' FWL.
 BOTTOM HOLE AT 460' FNL & 1750' FWL.
 CAMP 28N-25HZ TO BE AT 618' FSL, 2051' FWL.
 BOTTOM HOLE AT 460' FNL & 2355' FWL.
 HSR-SWENSSON 14-25A IS AT 665' FSL, 2035' FWL.

PREPARED BY:



KERR-MCGEE OIL & GAS ONSHORE LP

FIELD DATE: 06-29-11	PAD NAME: CAMP 2 PAD
DRAWING DATE: 07-05-11	SURFACE LOCATION:
BY: EFW	WELD COUNTY, COLORADO SE 1/4 SW 1/4, SEC. 25, T3N, R66W

