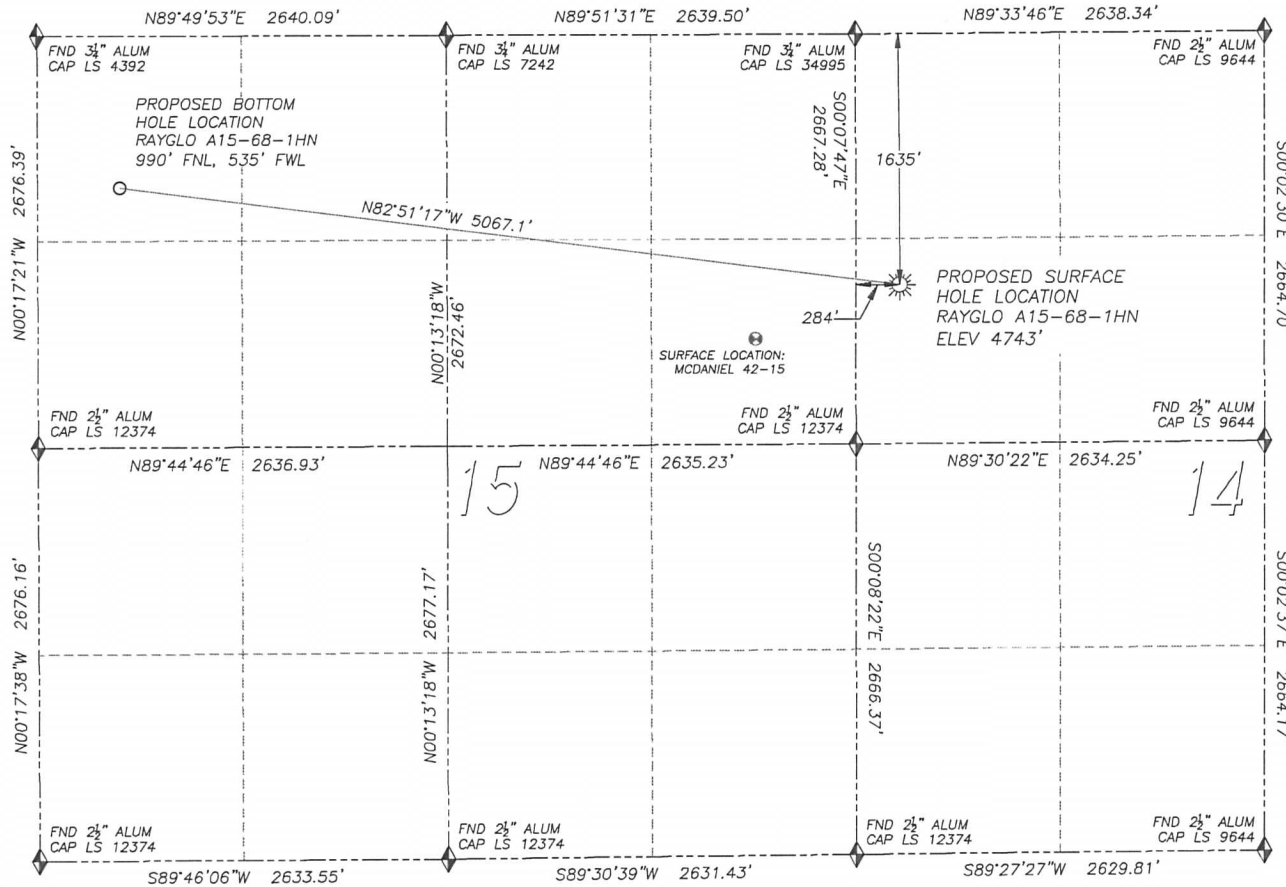


DALEY LAND SURVEYING, INC. PARKER, CO. 80134 303 953 9841
WELL LOCATION CERTIFICATE – RAYGLO A15-68-1HN
 SECTION 14, TOWNSHIP 6 NORTH, RANGE 64 WEST OF THE 6TH PRINCIPAL MERIDIAN



NAD 83 LATITUDE AND LONGITUDE

RAYGLO A15-68-1HN SURFACE HOLE:

LATITUDE: N40.48895°

LONGITUDE: W104.52577°

ELEVATION: 4743'

FOOTAGE: 1635' FNL, 284' FWL

PDOP: 1.8

QTR/QTR: SW4/NW4

PROP LINE: 254'± WEST

BOTTOM HOLE:

LATITUDE: N40.49068°

LONGITUDE: W104.54384°

FOOTAGE: 990' FNL, 535' FWL
 OF SECTION 15

NEAREST EXISTING WELL:

MCDANIEL 42-15 SURFACE HOLE

LATITUDE: N40.48798°

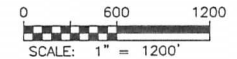
LONGITUDE: W104.52910°

ELEVATION: 4753'

992' SOUTHWEST

LEGEND

- ◆ FOUND MONUMENT AS DESCRIBED
- ☼ PROPOSED WELL
- EXISTING WELL
- BOTTOM HOLE
- ⌘ ABANDONED WELL



IN ACCORDANCE WITH A REQUEST FROM SCOTT LEWIS OF NOBLE ENERGY INC., DALEY LAND SURVEYING, INC. HAS DETERMINED THE SURFACE LOCATION OF THE RAYGLO A15-68-1HN WELL TO BE 1635' FNL, 284' FWL, AS MEASURED AT NINETY (90) DEGREES FROM THE SECTION LINES OF SECTION 14, TOWNSHIP 6 NORTH, RANGE 64 WEST OF THE 6TH PRINCIPAL MERIDIAN, WELD COUNTY, COLORADO. THE BOTTOM HOLE LOCATION, PROVIDED BY THE CLIENT, IS TO BE 990' FNL, 535' FWL OF SECTION 15, T.6N., R.64W.

I HEREBY CERTIFY THAT THIS WELL LOCATION CERTIFICATE WAS PREPARED BY ME OR UNDER MY DIRECT SUPERVISION, THAT THE WORK WAS COMPLETED ON 6/20/2011 FOR AND ON BEHALF OF NOBLE ENERGY, INC., AND THAT THIS MAP DOES NOT REPRESENT A BOUNDARY SURVEY, IT IS NOT A LAND SURVEY PLAT OR AN IMPROVEMENT SURVEY PLAT AND IT IS NOT TO BE RELIED UPON FOR THE ESTABLISHMENT OF FENCE, BUILDING OR OTHER FUTURE IMPROVEMENT LINES.

NOTES:

- 1) BEARINGS FOR THIS MAP ARE ASSUMED AND BASED UPON GPS OBSERVATIONS MADE BETWEEN MONUMENTS LOCATED AT THE NORTHWEST CORNER AND WEST QUARTER CORNER OF SECTION 14, T.6N., R.64W.
- 2) HORIZONTAL DATUM IS NAD83.
- 3) VERTICAL DATUM IS NAVD88. ELEVATIONS ARE DERIVED FROM GPS OBSERVATIONS PROCESSED THROUGH OPUS, UTILIZING THE GEOID03 MODEL.
- 4) SEE LOCATION DRAWING FOR VISIBLE IMPROVEMENTS WITHIN 600' OF PROPOSED SURFACE HOLE LOCATION.
- 5) SURFACE USE: PASTURE.

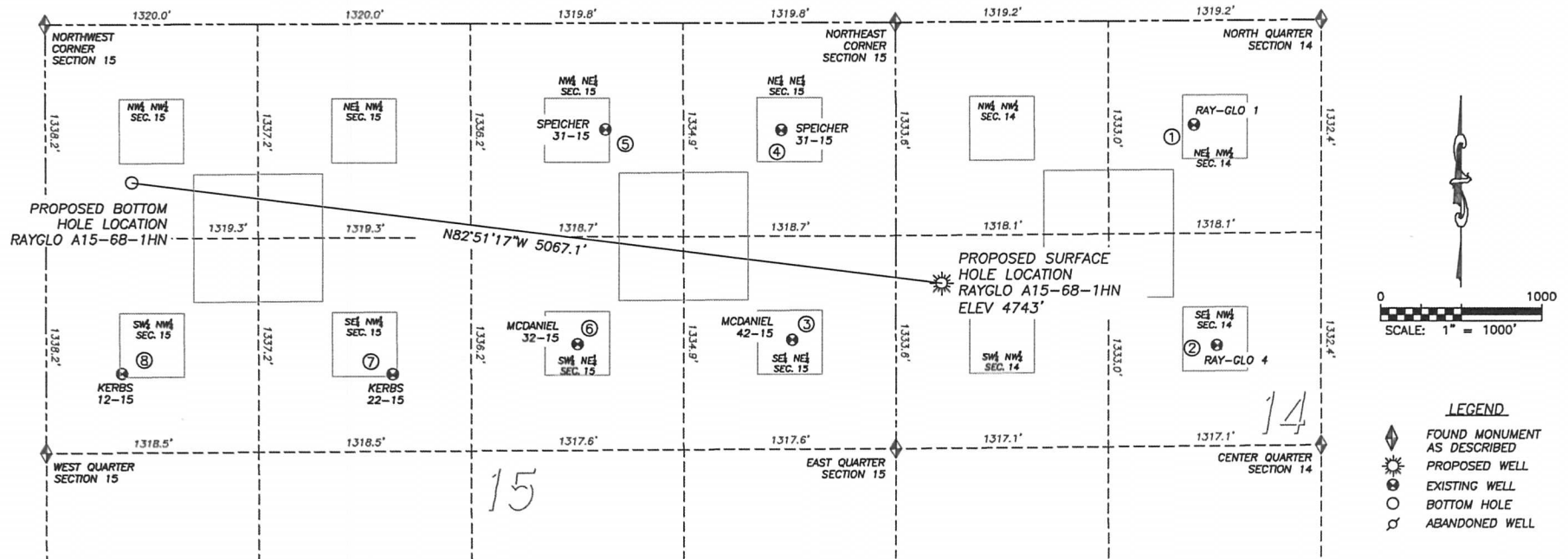


FOR AND ON BEHALF OF
 DALEY LAND SURVEYING INC.,
 Robert Daley, PLS 35597

DALEY LAND SURVEYING, INC. PARKER, CO. 80134 303 953 9841

SITE SKETCH - RAYGLO A15-68-1HN

SECTION 14, TOWNSHIP 6 NORTH, RANGE 64 WEST OF THE 6TH PRINCIPAL MERIDIAN



0 1000
SCALE: 1" = 1000'

LEGEND

- ◆ FOUND MONUMENT AS DESCRIBED
- ★ PROPOSED WELL
- EXISTING WELL
- BOTTOM HOLE
- ⊗ ABANDONED WELL

① RAY-GLO 1
NE/NW SEC. 14
655' FNL, 1850' FWL
LAT. N40.49167°
LONG. W104.52015°
EL: 4711'
PDOP 1.6

② RAY-GLO 4
SE/NW SEC. 14
2037' FNL, 1991' FWL
LAT. N40.48788°
LONG. W104.51963°
EL: 4710'
PDOP 1.4

③ MCDANIEL 42-15
SE/NE SEC. 15
1985' FNL, 643' FEL
LAT. N40.48798°
LONG. W104.52910°
EL: 4753'
PDOP 1.3

④ SPIECHER 41-15
NE/NE SEC. 15
672' FNL, 709' FEL
LAT. N40.49158°
LONG. W104.52934°
EL: 4760'
PDOP 2.0

⑤ SPIECHER 31-15
NW/NE SEC. 15
665' FNL, 1801' FEL
LAT. N40.49159°
LONG. W104.53327°
EL: 4782'
PDOP 1.8

⑥ MCDANIEL 32-15
SW/NE SEC. 15
2009' FNL, 1975' FEL
LAT. N40.48790°
LONG. W104.53388°
EL: 4784'
PDOP 1.3

⑦ KERBS 22-15
SE/NW SEC. 15
2193' FNL, 2151' FWL
LAT. N40.48739°
LONG. W104.53801°
EL: 4806'
PDOP 1.9

⑧ KERBS 12-15
SW/NW SEC. 15
2184' FNL, 472' FWL
LAT. N40.48740°
LONG. W104.54404°
EL: 4812'
PDOP 1.3

NOTES:
1) THIS DOES NOT REPRESENT A BOUNDARY SURVEY
2) THE LATITUDES AND LONGITUDES SHOWN ARE REFERENCED TO NAD83
3) DATUM FOR ELEVATION IS NAVD88. ELEVATIONS ARE DERIVED FROM GPS-RTK OBSERVATIONS PROCESSED THROUGH OPUS, UTILIZING THE GEOID03 MODEL

