

DALEY LAND SURVEYING, INC.

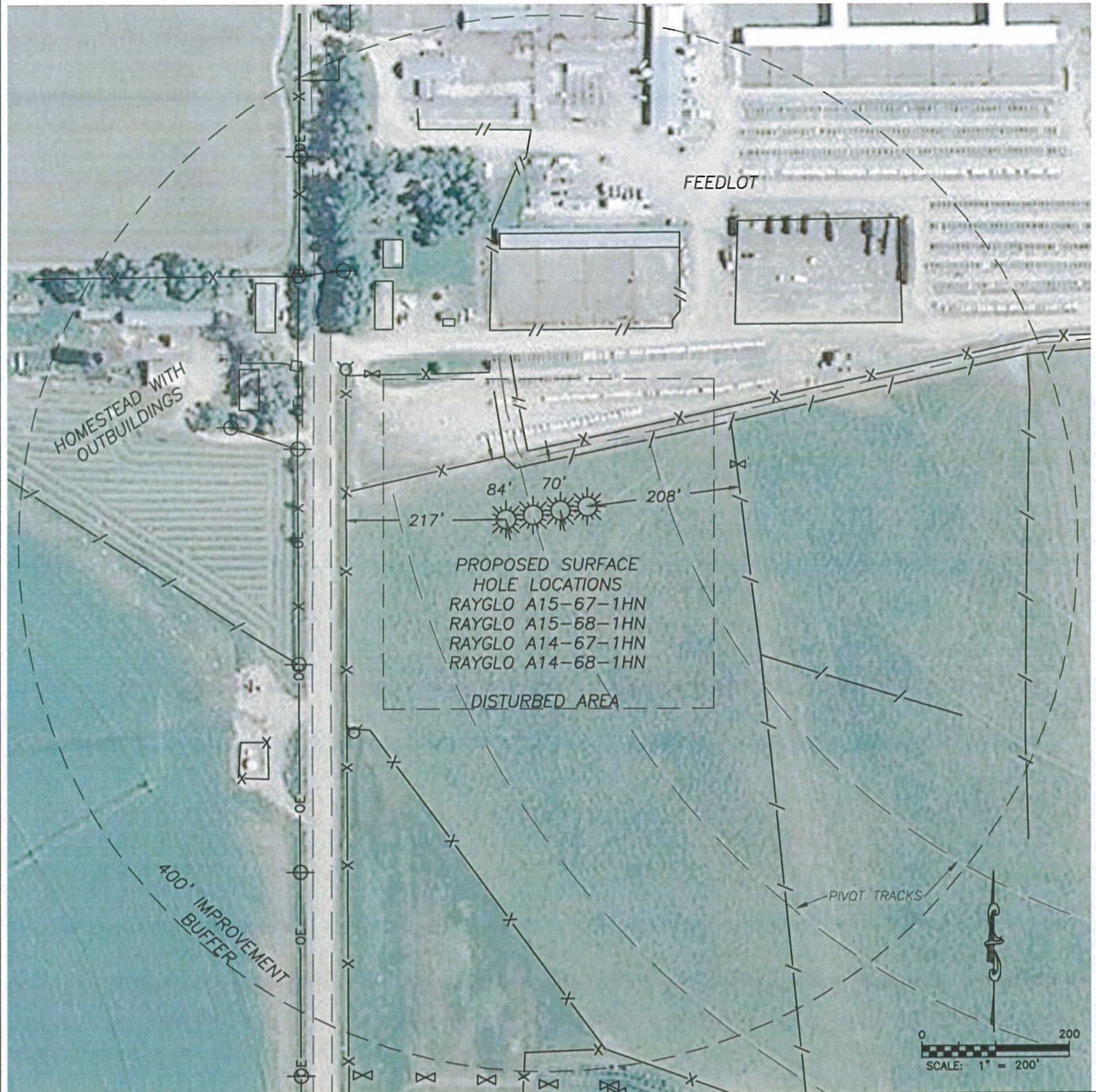
PARKER, CO. 80134

303 953 9841

MULTI WELL PAD LOCATION DRAWING

RAYGLO A15-67-1HN, A15-68-1HN, A14-67-1HN, A14-68-1HN

SECTION 14, TOWNSHIP 6 NORTH, RANGE 64 WEST OF THE 6TH PRINCIPAL MERIDIAN

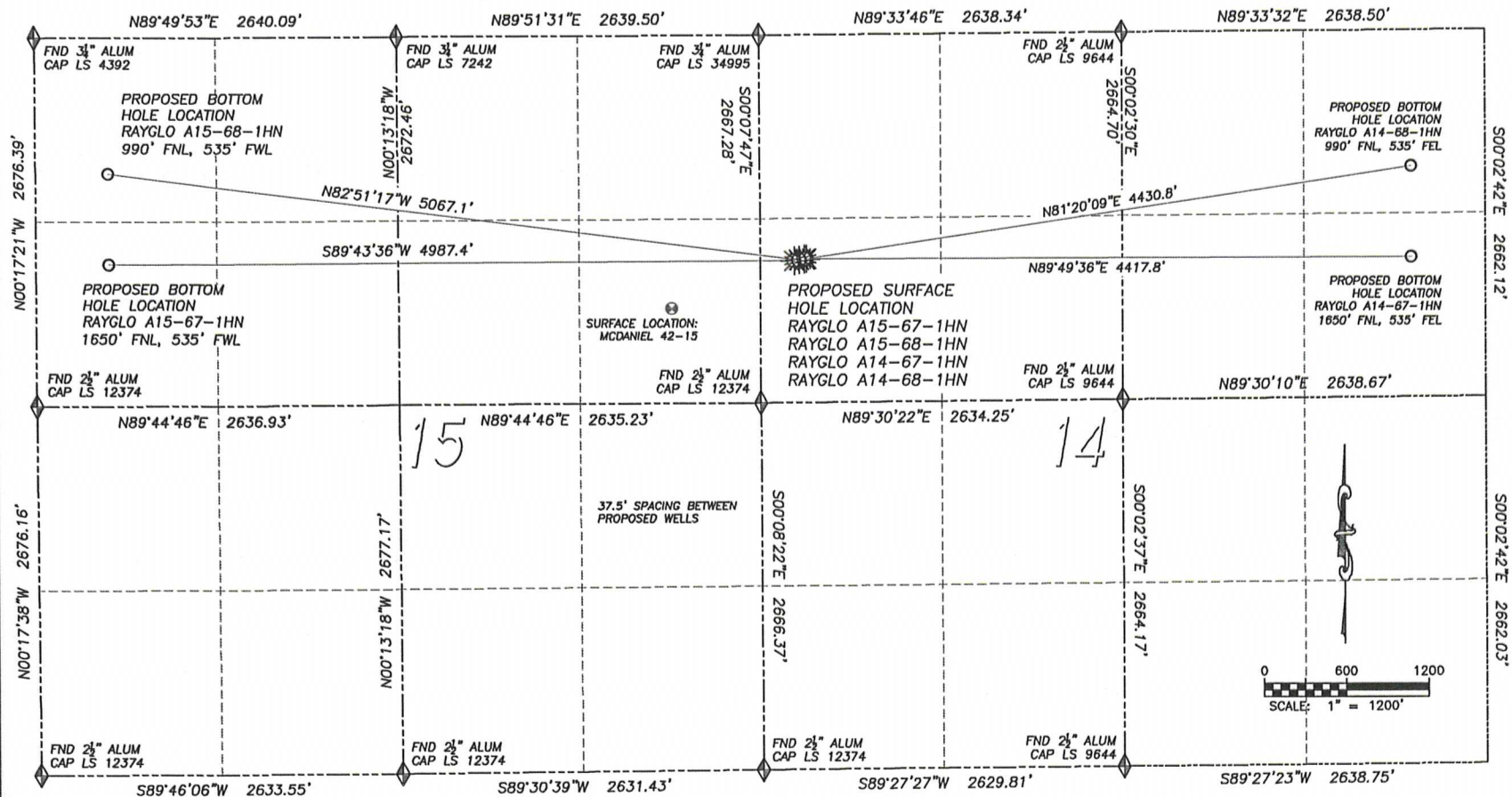


DALEY LAND SURVEYING, INC. PARKER, CO. 80134 303 953 9841

MULTI WELL PAD DIRECTIONAL LAYOUT

RAYGLO A15-67-1HN, A15-68-1HN, A14-67-1HN, A14-68-1HN

SECTION 14, TOWNSHIP 6 NORTH, RANGE 64 WEST OF THE 6TH PRINCIPAL MERIDIAN



NAD 83 LATITUDE AND LONGITUDE

RAYGLO A15-67-1HN SURFACE HOLE:
 LATITUDE: N40.48893°
 LONGITUDE: W104.52590°
 ELEVATION: 4744'
 FOOTAGE: 1641' FNL, 247' FWL

BOTTOM HOLE:
 LATITUDE: N40.48887°
 LONGITUDE: W104.54383°
 FOOTAGE: 1650' FNL, 535' FWL
 OF SECTION 15

RAYGLO A15-68-1HN SURFACE HOLE:
 LATITUDE: N40.48895°
 LONGITUDE: W104.52577°
 ELEVATION: 4743'
 FOOTAGE: 1635' FNL, 284' FWL

BOTTOM HOLE:
 LATITUDE: N40.49068°
 LONGITUDE: W104.54384°
 FOOTAGE: 990' FNL, 535' FWL
 OF SECTION 15

RAYGLO A14-67-1HN SURFACE HOLE:
 LATITUDE: N40.48896°
 LONGITUDE: W104.52563°
 ELEVATION: 4742'
 FOOTAGE: 1630' FNL, 322' FWL

BOTTOM HOLE:
 LATITUDE: N40.48900°
 LONGITUDE: W104.50975°
 FOOTAGE: 1650' FNL, 535' FEL

RAYGLO A14-68-1HN SURFACE HOLE:
 LATITUDE: N40.48898°
 LONGITUDE: W104.52550°
 ELEVATION: 4741'
 FOOTAGE: 1624' FNL, 359' FWL

BOTTOM HOLE:
 LATITUDE: N40.49081°
 LONGITUDE: W104.50976°
 FOOTAGE: 990' FNL, 535' FEL