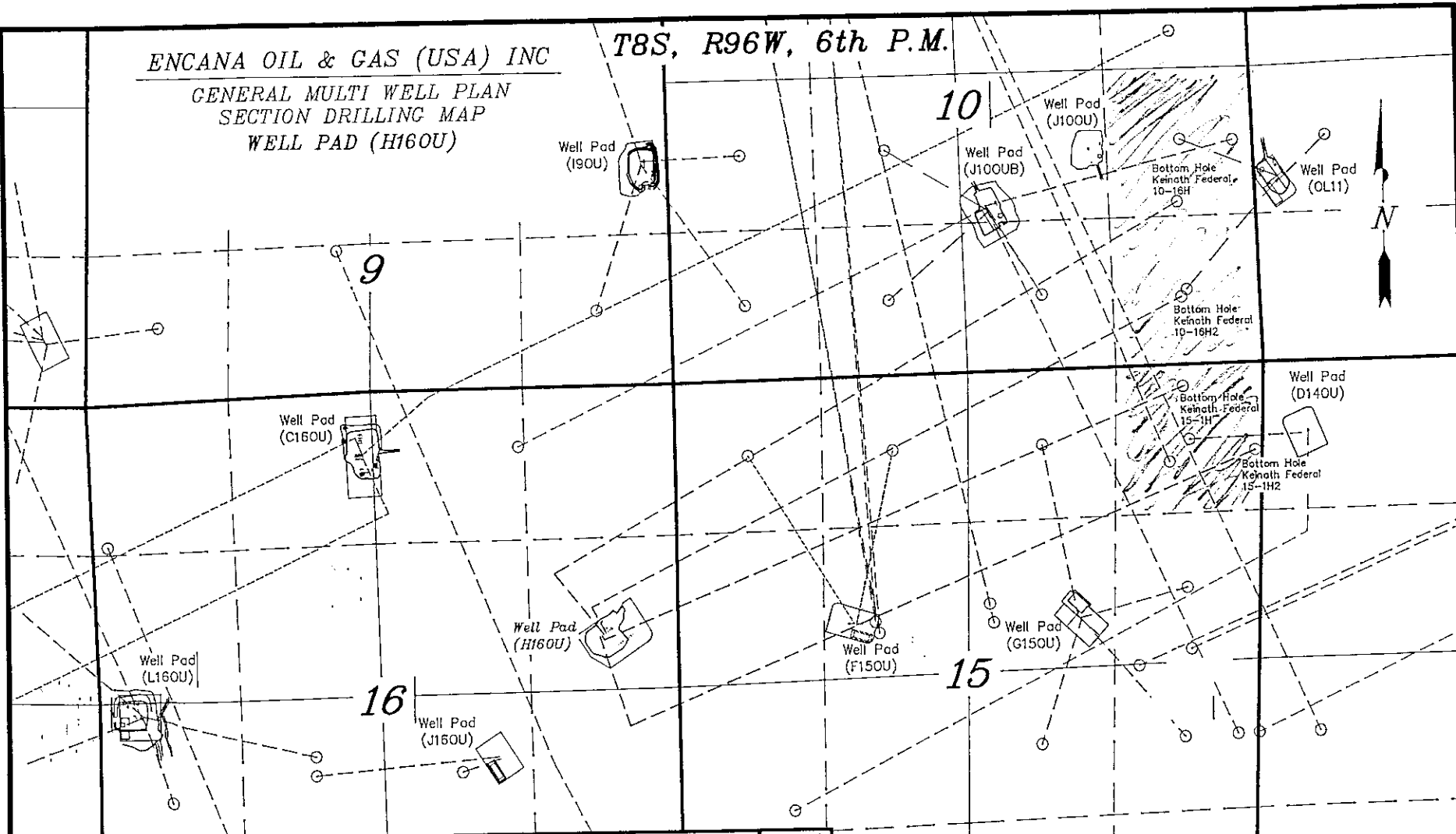


ENCANA OIL & GAS (USA) INC

GENERAL MULTI WELL PLAN
SECTION DRILLING MAP

WELL PAD (H160U)

T8S, R96W, 6th P.M.



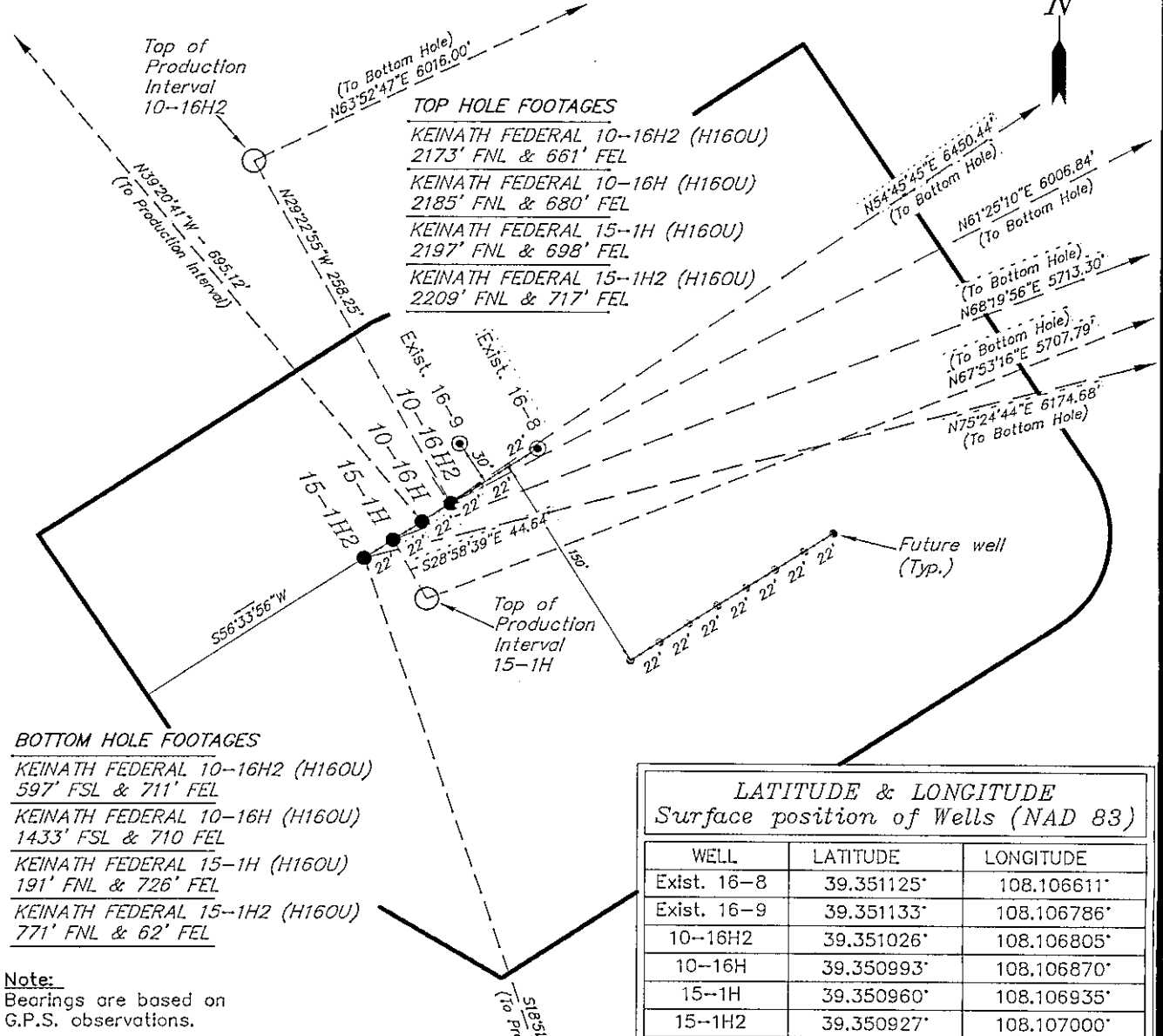
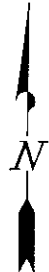
SURVEYED BY:	C.D.S.	DATE SURVEYED:	07-14-10
DRAWN BY:	R.V.C.	DATE DRAWN:	06-30-11
SCALE:	1" = 1000'	REVISED:	

Tri State
Land Surveying, Inc.
180 NORTH VERNAL AVE. VERNAL, UTAH 84078
(435) 781-2501

SHEET
1
OF 11

ENCANA OIL & GAS (USA) INC

DETAILED MULTI WELL PLAN WELL PAD INTERFERENCE PLAT WELL PAD (H160U) Section 16, T8S, R96W, 6th P.M.



TOP HOLE FOOTAGES
 KEINATH FEDERAL 10-16H2 (H160U)
 2173' FNL & 661' FEL
 KEINATH FEDERAL 10-16H (H160U)
 2185' FNL & 680' FEL
 KEINATH FEDERAL 15-1H (H160U)
 2197' FNL & 698' FEL
 KEINATH FEDERAL 15-1H2 (H160U)
 2209' FNL & 717' FEL

BOTTOM HOLE FOOTAGES
 KEINATH FEDERAL 10-16H2 (H160U)
 597' FSL & 711' FEL
 KEINATH FEDERAL 10-16H (H160U)
 1433' FSL & 710' FEL
 KEINATH FEDERAL 15-1H (H160U)
 191' FNL & 726' FEL
 KEINATH FEDERAL 15-1H2 (H160U)
 771' FNL & 62' FEL

Note:
 Bearings are based on
 G.P.S. observations.

LATITUDE & LONGITUDE
 Surface position of Wells (NAD 83)

WELL	LATITUDE	LONGITUDE
Exist. 16-8	39.351125°	108.106611°
Exist. 16-9	39.351133°	108.106786°
10-16H2	39.351026°	108.106805°
10-16H	39.350993°	108.106870°
15-1H	39.350960°	108.106935°
15-1H2	39.350927°	108.107000°

LATITUDE & LONGITUDE
 Bottom hole position of Wells (NAD 83)

WELL	LATITUDE	LONGITUDE
10-16H2	39.358891°	108.088156°
10-16H	39.361186°	108.088242°
15-1H	39.356727°	108.088165°
15-1H2	39.355171°	108.085875°

RELATIVE COORDINATES
 From top hole to bottom hole

WELL	NORTH	EAST
10-16H2	2874'	5275'
10-16H	3722'	5269'
15-1H	2109'	5310'
15-1H2	1555'	5976'

SURVEYED BY: C.D.S. DATE SURVEYED: 07-14-10
 DRAWN BY: R.V.C. DATE DRAWN: 06-30-11
 SCALE: 1" = 100' REVISED:

Tri State (435) 781-2501
 Land Surveying, Inc.
 180 NORTH VERNAL AVE. VERNAL, UTAH 84078

SHEET
 3
 OF 11