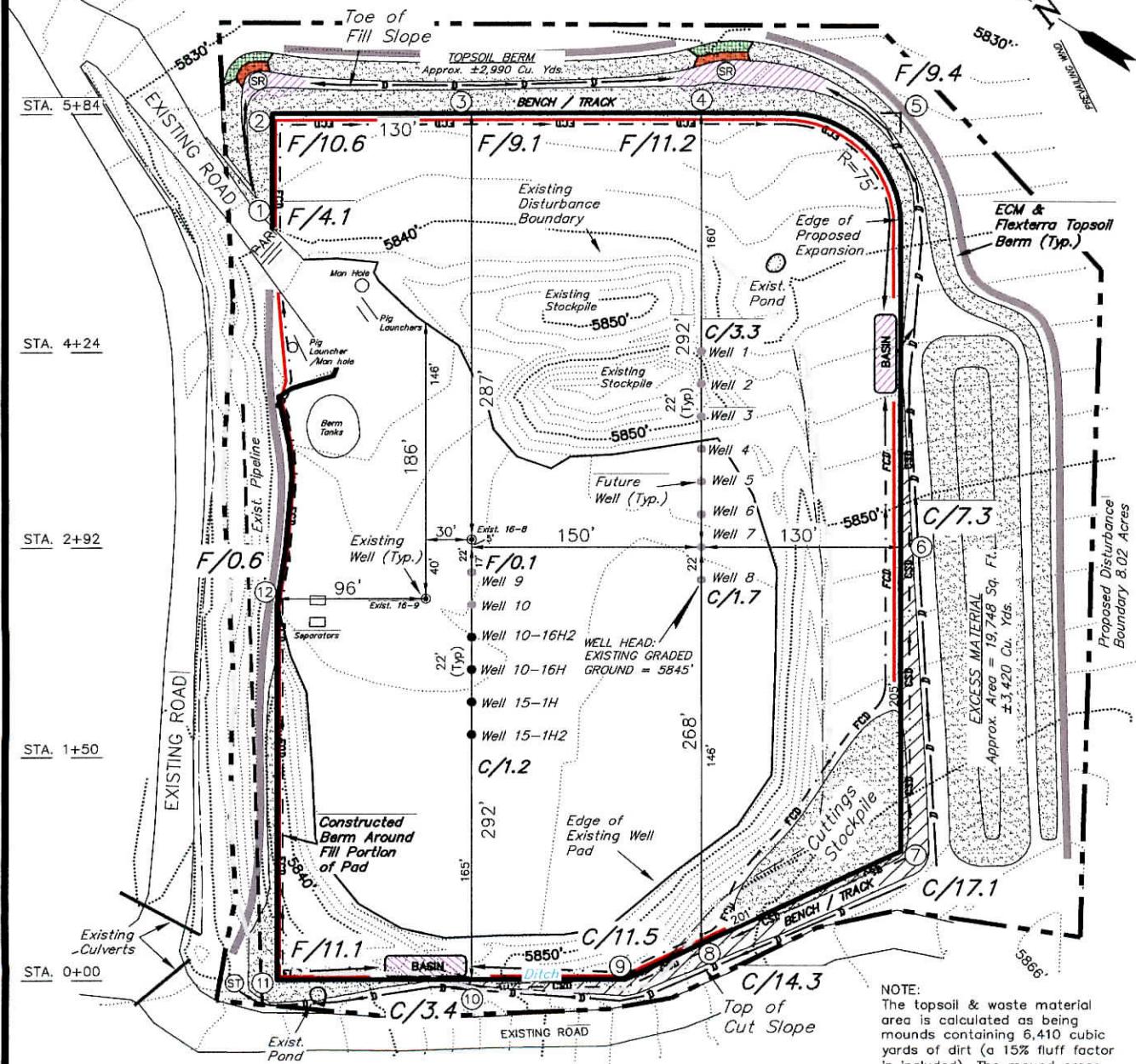
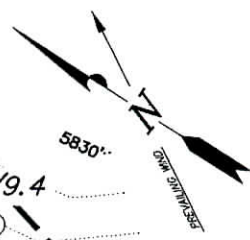


ENCANA OIL & GAS (USA) INC

LAYOUT DRAWING CUT SHEET WELL PAD (H16OU) EXPANSION Section 16, T8S, R96W, 6th P.M.



NOTES:

- (1) Slope Track and/or Terrace All Slopes and Piles
- (2) Erosion Control & Seed Topsoil Stockpile
- (3) Erosion Control & Seed Outside Slopes of Stockpiles
- (4) Slope away from Substructure Areas 1% to 3% to Flow Control Ditch on Entire Pad
- (5) When Possible the Cut and Fill Slopes Directly Behind the Proposed Production Equipment Should be Reclaimed with 3:1 Slopes and Topsoil Spread During Pad Construction.
- (6) BMP Selection and Position may Change Depending on Actual Conditions Encountered During the Construction Process.
- (7) All CMP's Shall have Inlet and Outlet Protection.
- (8) All BMP's to be constructed to Encana Oil & Gas (USA) Inc. BMP Manual's Specifications

NOTE:
The topsoil & waste material area is calculated as being mounds containing 6,410 cubic yards of dirt (a 15% fluff factor is included). The mound areas are calculated with push slopes of 2.5:1 & fall slopes of 2.5:1.

LEGEND:

- PARI = PAD/ACCESS ROAD INTERFACE
- SR = SEDIMENT RESERVOIR
- ST = SEDIMENT TRAP
- R.O.P. = RUN-ON PROTECTION
- = PERIMETER CONTROL (WATTLES)
- CSD = CUT SLOPE DIVERSION (BERM TOE OF CUT SLOPE)
- D = FILL DIVERSION TO SEDIMENT TRAP
- VGB = VEGETATION BUFFER (UNDISTURBED LAND INSIDE PC)
- CDM = CHECK DAM
- FCD = FLOW CONTROL DITCH

SURVEYED BY: C.D.S.	DATE SURVEYED: 07-14-10
DRAWN BY: R.V.C.	DATE DRAWN: 07-01-11
SCALE: 1" = 100'	REVISED:

Tri State
Land Surveying, Inc.
180 NORTH VERNAL AVE. VERNAL, UTAH 84078

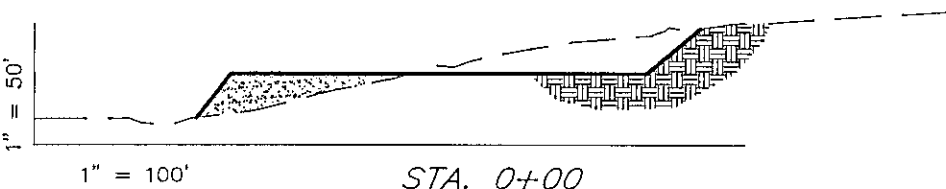
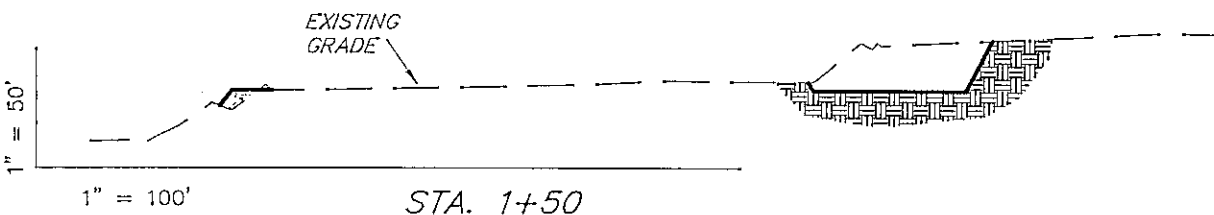
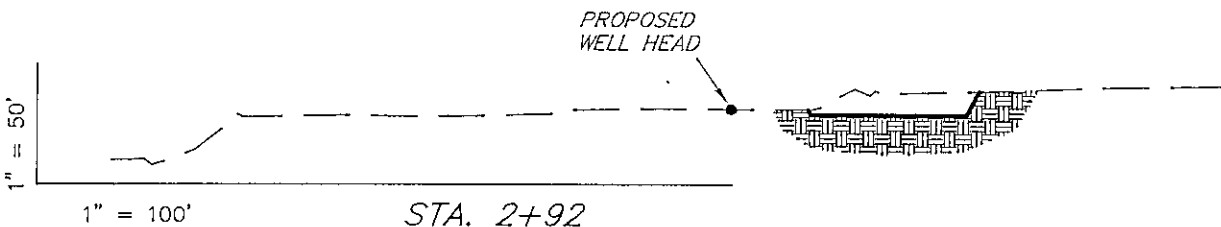
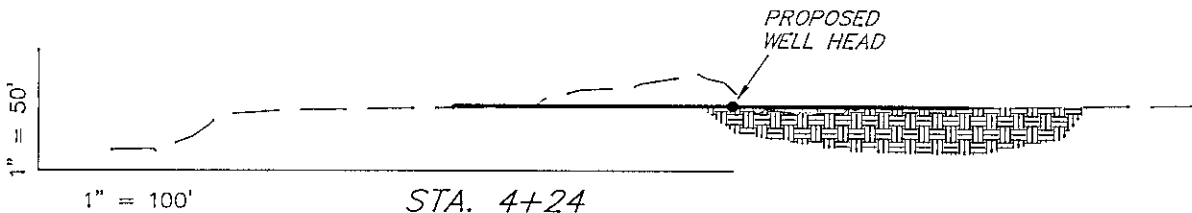
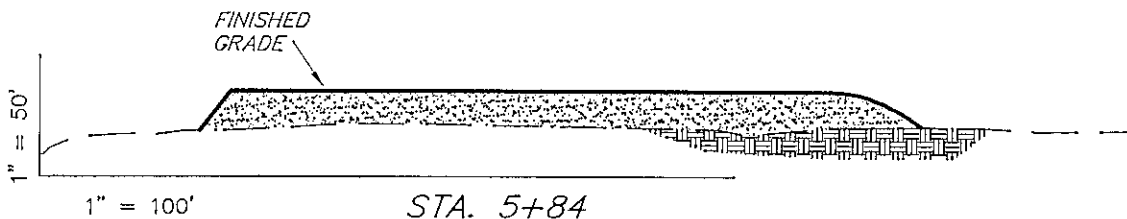
(435) 781-2501

SHEET
4
OF 11

ENCANA OIL & GAS (USA) INC

CROSS SECTIONS

WELL PAD (H160U) EXPANSION Section 16, T8S, R96W, 6th P.M.



NOTE:
UNLESS OTHERWISE NOTED
CUT SLOPES ARE AT 1:1
FILL SLOPES ARE AT 1.5:1

ESTIMATED EARTHWORK QUANTITIES (No Shrink or swell adjustments have been used) (Expressed in Cubic Yards)				
ITEM	CUT	FILL	EXCESS	6" TOPSOIL
PAD	16,730	14,450	2,970	Topsail is not included in Pad Cut
TOTALS	17,420	14,450	2,970	2,600

SURVEYED BY: C.D.S.	DATE SURVEYED: 07-14-10
DRAWN BY: R.V.C.	DATE DRAWN: 07-01-11
SCALE: 1" = 100'	REVISED:

Tri State (435) 781-2501
Land Surveying, Inc.
180 NORTH VERNAL AVE. VERNAL, UTAH 84078

SHEET
5
OF 11

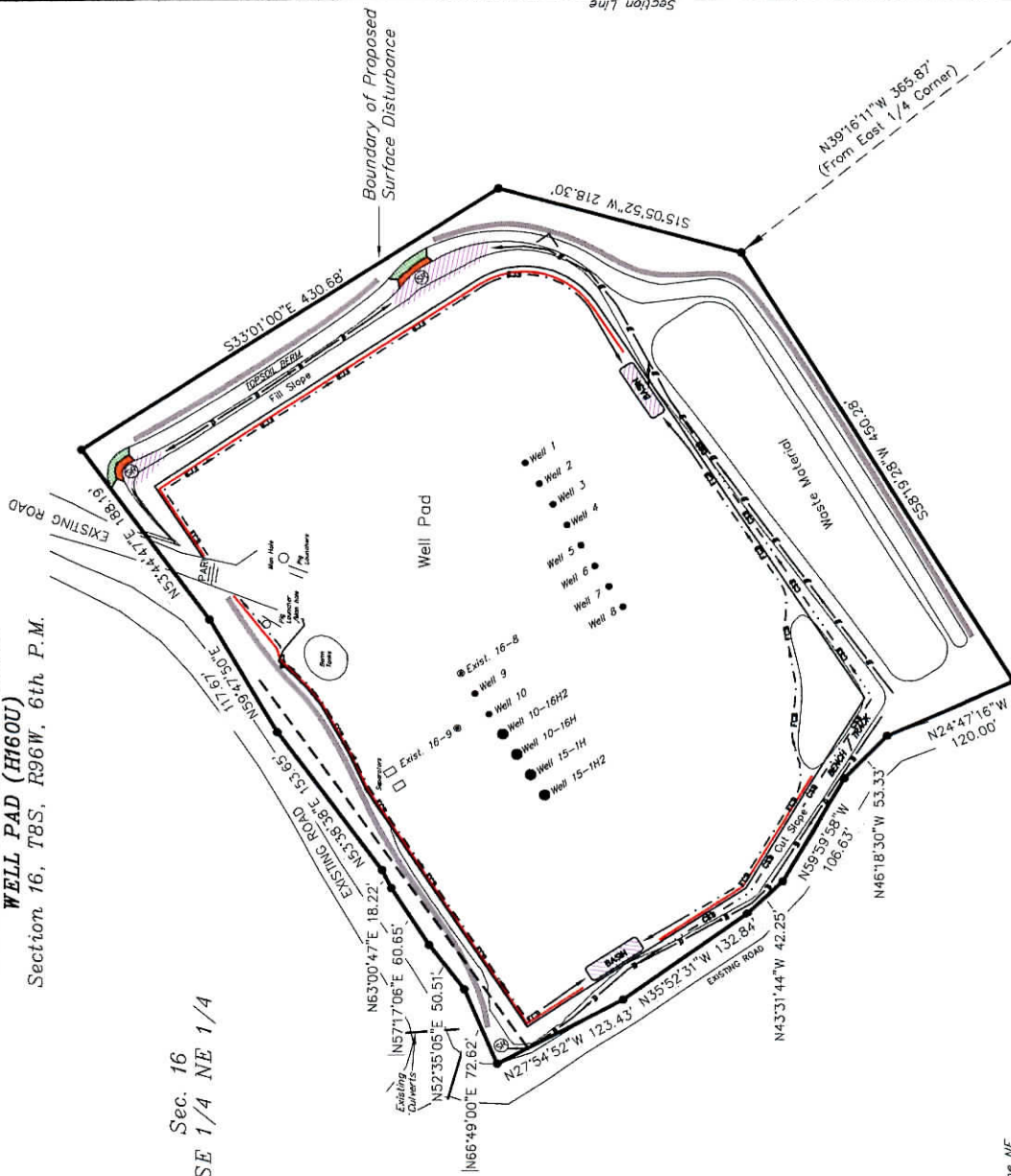
ENCANA OIL & GAS (USA) INC

SURFACE DISTURBANCE AREA

WELL PAD (H1600)

Section 16, T8S, R96W, 6th P.M.

Sec. 16
SE 1/4 NE 1/4



Area of Proposed Surface Disturbance is 8.02 Acres

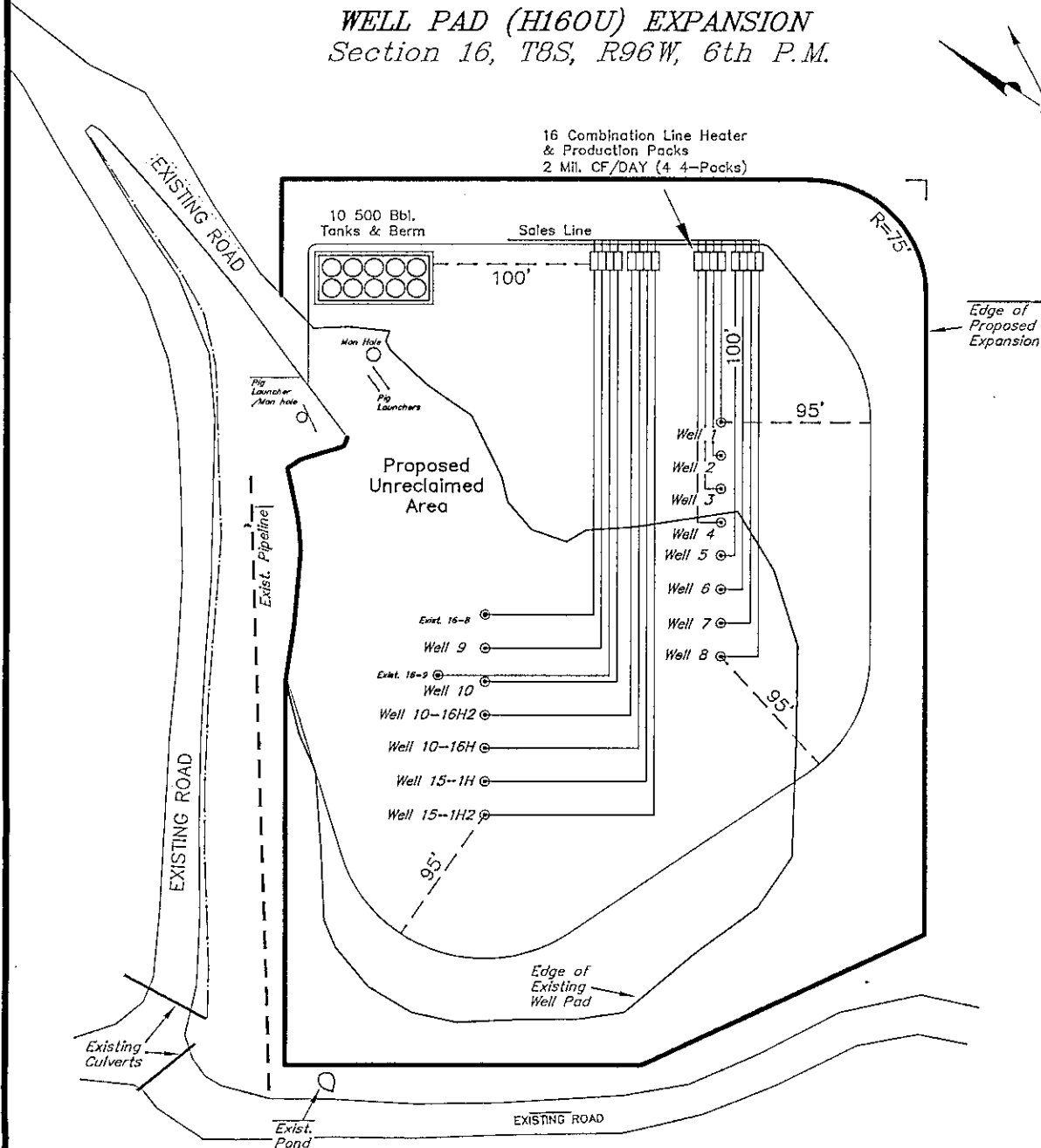
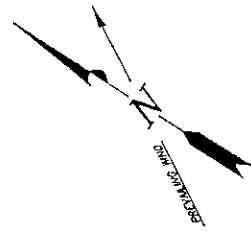
BASIS OF BEARINGS NOTE:
Basis of Bearings is the East Line of the NE 1/4 of Section 16 which is taken from Global Positioning Satellite observations to bear N00°20'56\"/>

SURVEYED BY:	C.D.S.	DATE SURVEYED:	07-14-10
DRAWN BY:	R.V.C.	DATE DRAWN:	07-01-11
SCALE:	1" = 100'	Date Latest Revision:	

Tri State Land Surveying, Inc.
180 NORTH VERNAL AVE. VERNAL, UTAH 84078
(435) 781-2501
SHEET 8 OF 11

ENCANA OIL & GAS (USA) INC

PRODUCTION SCHEMATIC WELL PAD (H160U) EXPANSION Section 16, T8S, R96W, 6th P.M.



Notes:

1. Reclaimed area to include seeding of approved vegetation and sufficient storm water management system.
2. Reclaimed Pad to have storm water Management BMP's Per Encana Oil & Gas (USA) Inc. BMP Manual.
3. Actual Equipment Layout and Reclaimed Pad Surface Area May Change do to Production Requirements or Site Conditions.

DISTURBED AREA:

TOTAL DISTURBED AREA = 8.02 ACRES
 TOTAL RECLAIMED AREA = 4.67 ACRES
 UNRECLAIMED AREA = 3.35 ACRES

SURVEYED BY: C.D.S.	DATE SURVEYED: 07-14-10
DRAWN BY: R.V.C.	DATE DRAWN: 07-01-11
SCALE: 1" = 100'	REVISED:

Tri State (435) 781-2501
 Land Surveying, Inc.
 180 NORTH VERNAL AVE. VERNAL, UTAH 84078

SHEET
 7
 OF 11