

Downhole Schematic for Federal 28-14 (PL28)



Project :South Piceance

API # :05045108740000

Surface Location :NWSW Sec 28 T7S - R9SW 6th F

Area :Parachute

County :GARFIELD

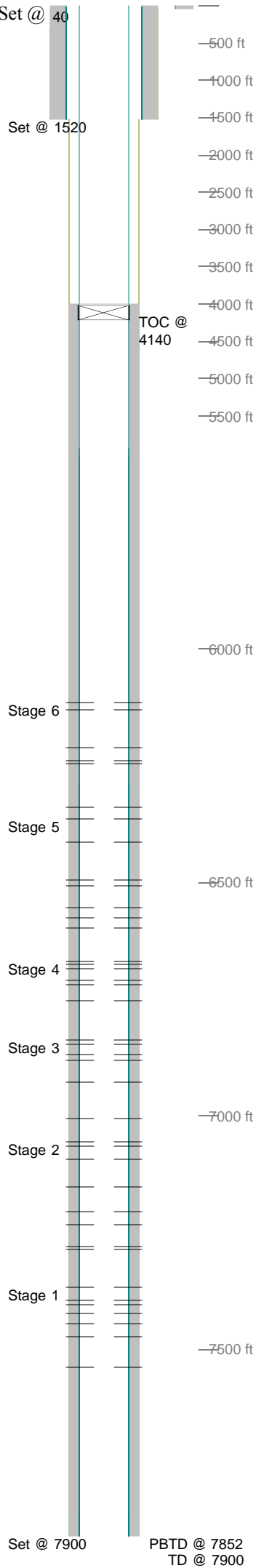
BHL :SESW-28-7S-9S W 6th PM

As Of :08/26/2011

GL : 7163.0 ft

KB to GL : 18.0 ft

KB : 7181.0 ft



Casing Details								
Section	Hole	Casing	Mass	Set At	Length	Thread	Grade	Description
Conductor	20.000	16	42	40	40		Line	Cond
Surface	12.250	8.625	0	1,520	2	ST&C	K-55	Shoe
		8.625	32	1,519	41	ST&C	J-55	Shoe Joint
		8.625	0	1,477	2	ST&C	K-55	Float Collar
		8.625	32	1,476	1,452	ST&C	J-55	Joints
		8.625	32	24	4	ST&C	J-55	Pup Joint
		5K	0	20	2			Well Head
		8.625	32	18	18	ST&C	J-55	Land Jt.
Production	7.875		0	7,900	2	LT&C		Shoe
		5.5	17	7,899	43	LT&C		Shoe Jt.
			0	7,855	2	LT&C		Float
		5.5	17	7,854	1,531	LT&C		Casing
		5.5	17	6,323	33	LT&C		Marker Jt.
		5.5	17	6,290	702	LT&C		Casing
		5.5	17	5,588	21	LT&C		Marker Jt.
		5.5	17	5,567	5,572	LT&C		Casing
Cement Details								
Section	Sequence	Top	Density	Blend / Additives				
Conductor	Lead	0	0.0	4 Yard's Batch Mix / 4 Yard's Batch Mix				
Surface	Lead	0	13.5	D049 / D049+3%S001+0.2%D046+0.25#/skD029				
	Tail	720	15.8	G / G+2%S1+0.2%D046+0.25#/skD029				
Production	Tail	4,000	9.6	9.6ppg LiteCrete / 9.6ppg LiteCrete+0.8%BWOB				
				D065+0.2%D046+0.3%D167+0.2%D013				
Perforations								
Stage 1							6,837	6,838 2
Date	From	To	Shots	Stage 4	Date	From	To	Shots
12/17/2005	7,539	7,541	4		12/19/2005	6,754	6,756	4
	7,472	7,473	2			6,719	6,720	2
	7,446	7,448	4			6,710	6,712	4
	7,424	7,425	2			6,683	6,684	2
	7,404	7,405	2			6,676	6,678	4
	7,396	7,397	2			6,668	6,669	2
	7,366	7,367	2					
Stage 2				Stage 5				
Date	From	To	Shots	Date	From	To	Shots	
12/17/2005	7,287	7,289	4	12/19/2005	6,597	6,598	2	
	7,279	7,280	2		6,575	6,577	4	
	7,234	7,235	2		6,553	6,555	4	
	7,205	7,207	4		6,507	6,508	2	
	7,152	7,153	2		6,494	6,496	4	
	7,093	7,094	2		6,413	6,414	2	
	7,065	7,066	2		6,364	6,365	2	
	7,055	7,056	2	Stage 6				
Stage 3				Date	From	To	Shots	
Date	From	To	Shots	12/20/2005	6,338	6,340	4	
12/19/2005	7,004	7,006	4		6,246	6,248	4	
	6,927	6,929	4		6,238	6,239	2	
	6,880	6,882	4		6,212	6,214	4	
	6,867	6,868	2		6,129	6,130	2	
	6,845	6,846	2		6,115	6,116	2	
Frac Summary								
Stage 1 : 7,366 - 7,541, 18 - 0.340" shots, 2482 bbls of Slickwater, 100000 lbs of 20-40 Sand Report Date: 12/17/2005								
Stage 2 : 7,055 - 7,289, 20 - 0.340" shots, 3861 bbls of Slickwater, 156000 lbs of 20-40 Sand Report Date: 12/17/2005								
Stage 3 : 6,837 - 7,006, 18 - 0.340" shots, 3569 bbls of Slickwater, 144000 lbs of 20-40 Sand Report Date: 12/19/2005								
Stage 4 : 6,668 - 6,756, 18 - 0.340" shots, 2995 bbls of Slickwater, 120000 lbs of 20-40 Sand Report Date: 12/19/2005								
Stage 5 : 6,364 - 6,598, 20 - 0.340" shots, 3914 bbls of Slickwater, 164000 lbs of 20-40 Sand Report Date: 12/19/2005								
Stage 6 : 6,115 - 6,340, 18 - 0.340" shots, 2536 bbls of Slickwater, 106000 lbs of 20-40 Sand Report Date: 12/20/2005								
Bridge Plug Details								
Depth	Date Set	Plug Type	Sacks Cement					
4,020.0	08/26/2011	CBP	2					
Comments								
Bradenhead pressures: Frac stage 1: 0-0 psi; stage 2: 0-0 psi; stage 3: 0-0 psi; stage 4: 0-0 psi; stage 5: 0-0 psi; stage 6: 0-0 psi. SIBH 0 psi 1-28-10								