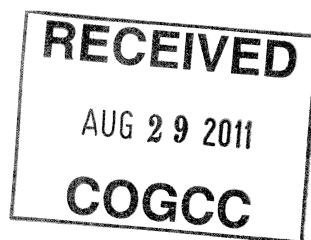


HALLIBURTON



Cementing Job Summary

The Road to Excellence Starts with Safety

Sold To #: 300721	Ship To #: 2640044	Quote #:	Sales Order #: 6251139
Customer: WILLIAMS PRODUCTION RMT INC EBUSINE	Customer Rep: Scharf, Allan		
Well Name: AP	Well #: 41-23-696	API/UWI #: 05-045-14778	
Field: PARACHUTE	City (SAP): PARACHUTE	County/Parish: Garfield	State: Colorado
Lat: N 39.516 deg. OR N 39 deg. 30 min. 58.075 secs.	Long: W 108.074 deg. OR W -109 deg. 55 min. 34.878 secs.		
Contractor: CYCLONE 17	Rig/Platform Name/Num: CYCLONE17		
Job Purpose: Cement Surface Casing			
Well Type: Development Well	Job Type: Cement Surface Casing		
Sales Person: KOHL, KYLE	Srv Supervisor: HAYES, DIRK	MBU ID Emp #: 336768	

Job Personnel

HES Emp Name	Exp Hrs	Emp #	HES Emp Name	Exp Hrs	Emp #	HES Emp Name	Exp Hrs	Emp #
COLLINS, JOSH	4	452648	GREGORY, JON D	4	439067	HANSON, MARK	4	350530
HAYES, DIRK A	4	336768	ROSS, CHUCK	4	453128	STILLSON, ERIC W	4	393789

Equipment

HES Unit #	Distance-1 way	HES Unit #	Distance-1 way	HES Unit #	Distance-1 way	HES Unit #	Distance-1 way
10533645	60 mile	10592964	60 mile	10623677	60 mile	10624108	60 mile
10719775	60 mile	10822535	60 mile	10871245	60 mile		

Job Hours

Date	On Location Hours	Operating Hours	Date	On Location Hours	Operating Hours	Date	On Location Hours	Operating Hours
10-19-08	4	1						

TOTAL Total is the sum of each column separately

Job				Job Times			
Formation Name	Formation Depth (MD)	Top	Bottom	Date	Time	Time Zone	
Form Type			BHST	Called Out	19 - Oct - 2008	05:00	MST
Job depth MD	2492. ft		Job Depth TVD	On Location	19 - Oct - 2008	09:30	MST
Water Depth			Wk Ht Above Floor	Job Started	19 - Oct - 2008	12:41	MST
Perforation Depth (MD)	From		To	Job Completed	19 - Oct - 2008	13:55	MST
				Departed Loc	19 - Oct - 2008	15:30	MST

Well Data

Description	New / Used	Max pressure psig	Size in	ID in	Weight lbm/ft	Thread	Grade	Top MD ft	Bottom MD ft	Top TVD ft	Bottom TVD ft
-------------	------------	-------------------	---------	-------	---------------	--------	-------	-----------	--------------	------------	---------------

Sales/Rental/3rd Party (HES)

Description	Qty	Qty uom	Depth	Supplier
PLUG,CMTG,TOP,9 5/8,HWE,8.16 MIN/9.06 MA	1	EA		

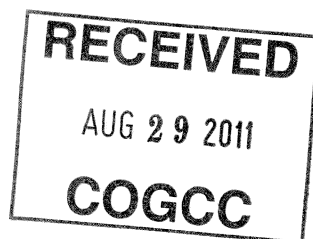
Tools and Accessories

Type	Size	Qty	Make	Depth	Type	Size	Qty	Make	Depth	Type	Size	Qty	Make
Guide Shoe					Packer					Top Plug		1	
Float Shoe					Bridge Plug					Bottom Plug			
Float Collar					Retainer					SSR plug set			
Insert Float										Plug Container		1	
Stage Tool										Centralizers			

Miscellaneous Materials

Gelling Agt	Conc	Surfactant	Conc	Acid Type	Qty	Conc	%
Treatment Fld	Conc	Inhibitor	Conc	Sand Type	Size		Qty

Fluid Data									
Stage/Plug #: 1									
Fluid #	Stage Type	Fluid Name	Qty	Qty uom	Mixing Density lbm/gal	Yield ft ³ /sk	Mix Fluid Gal/sk	Rate bbl/min	Total Mix Fluid Gal/sk
1	WATER SPACER		20.0	bbl	.	.0	.0	.0	
2	Lead Cement	VERSACEM (TM) SYSTEM (452010)	390.0	sacks	12.3	2.38	13.75		
		CAL-SEAL 60, 50 LB BAG (101217146)							
		ECONOLITE (100001580)							
		VERSASET, 55 LB SK (101376573)							
		SALT, 100 LB BAG (100003652)							
		POLY-E-FLAKE (101216940)							
		D-AIR 3000 (101007446)							
		FRESH WATER							
3	Tail Cement	VERSACEM (TM) SYSTEM (452010)	140.0	sacks	12.8	2.11	11.75		
		CAL-SEAL 60, 50 LB BAG (101217146)							
		ECONOLITE (100001580)							
		VERSASET, 55 LB SK (101376573)							
		SALT, 100 LB BAG (100003652)							
		FRESH WATER							
4	DISPLACEMENT		189.7	bbl	.	.0	.0	.0	
Calculated Values		Pressures		Volumes					
Displacement	189.7	Shut In: Instant		Lost Returns	NO	Cement Slurry	217	Pad	
Top Of Cement	SURFACE	5 Min		Cement Returns	85	Actual Displacement	189.7	Treatment	
Frac Gradient		15 Min		Spacers	20	Load and Breakdown		Total Job	
Rates									
Circulating		Mixing	8	Displacement	8	Avg. Job	8		
Cement Left In Pipe	Amount	0 ft	Reason	Shoe Joint					
Frac Ring # 1 @	ID	Frac ring # 2 @	ID	Frac Ring # 3 @	ID	Frac Ring # 4 @	ID		
The Information Stated Herein Is Correct				Customer Representative Signature					

HALLIBURTON**Cementing Job Log****The Road to Excellence Starts with Safety**

Sold To #: 300721	Ship To #: 2640044	Quote #:	Sales Order #: 6251139
Customer: WILLIAMS PRODUCTION RMT INC EBUSINE		Customer Rep: Scharf, Allan	
Well Name: AP	Well #: 41-23-696	API/UWI #: 05-045-14778	
Field: PARACHUTE	City (SAP): PARACHUTE	County/Parish: Garfield	State: Colorado
Legal Description:			
Lat: N 39.516 deg. OR N 39 deg. 30 min. 58.075 secs.		Long: W 108.074 deg. OR W -109 deg. 55 min. 34.878 secs.	
Contractor: CYCLONE 17		Rig/Platform Name/Num: CYCLONE17	
Job Purpose: Cement Surface Casing			Ticket Amount:
Well Type: Development Well		Job Type: Cement Surface Casing	
Sales Person: KOHL, KYLE		Srvs Supervisor: HAYES, DIRK	MBU ID Emp #: 336768

Activity Description	Date/Time	Cht #	Rate bbl/ min	Volume bbl		Pressure psig		Comments
				Stage	Total	Tubing	Casing	
Call Out	10/19/2008 05:00							
Crew Leave Yard	10/19/2008 07:45							
Arrive at Location from Service Center	10/19/2008 09:30							
Assessment Of Location Safety Meeting	10/19/2008 09:45							
Other	10/19/2008 09:46							ARRIVE ON LOCATION OCT 19, 2008, RIG CREW STILL HAD TO RUN 16 JOINTS OF 9 5/8" SURFACE CASING
Safety Meeting - Pre Rig-Up	10/19/2008 12:00							
Safety Meeting - Pre Job	10/19/2008 12:30							
Start Job	10/19/2008 12:41							TD 2492, TP 2486, SHOE 37.62, MUD 10.3
Prime Pumps	10/19/2008 12:42		2		2		113.0	PUMP 2 BBLS AHEAD TO PRIME LINES
Test Lines	10/19/2008 12:45		0.5		0.5		3000.0	
Pump Spacer 1	10/19/2008 12:46		8		20		328.0	PUMP 20 BBLS OF FRESH H2O AHEAD OF LEAD CEMENT
Pump Lead Cement	10/19/2008 12:51		8		165.3		500.0	390 SKS @ 12.3 YIELD 2.38 W/R 13.75
Pump Tail Cement	10/19/2008 13:10		8		52.6		455.0	140 SKS @ 12.8 YIELD 2.11 W/R 11.75
Shutdown	10/19/2008 13:18							
Drop Top Plug	10/19/2008 13:18							

Sold To # : 300721

Ship To # :2640044

Quote # :

Sales Order # : 6251139

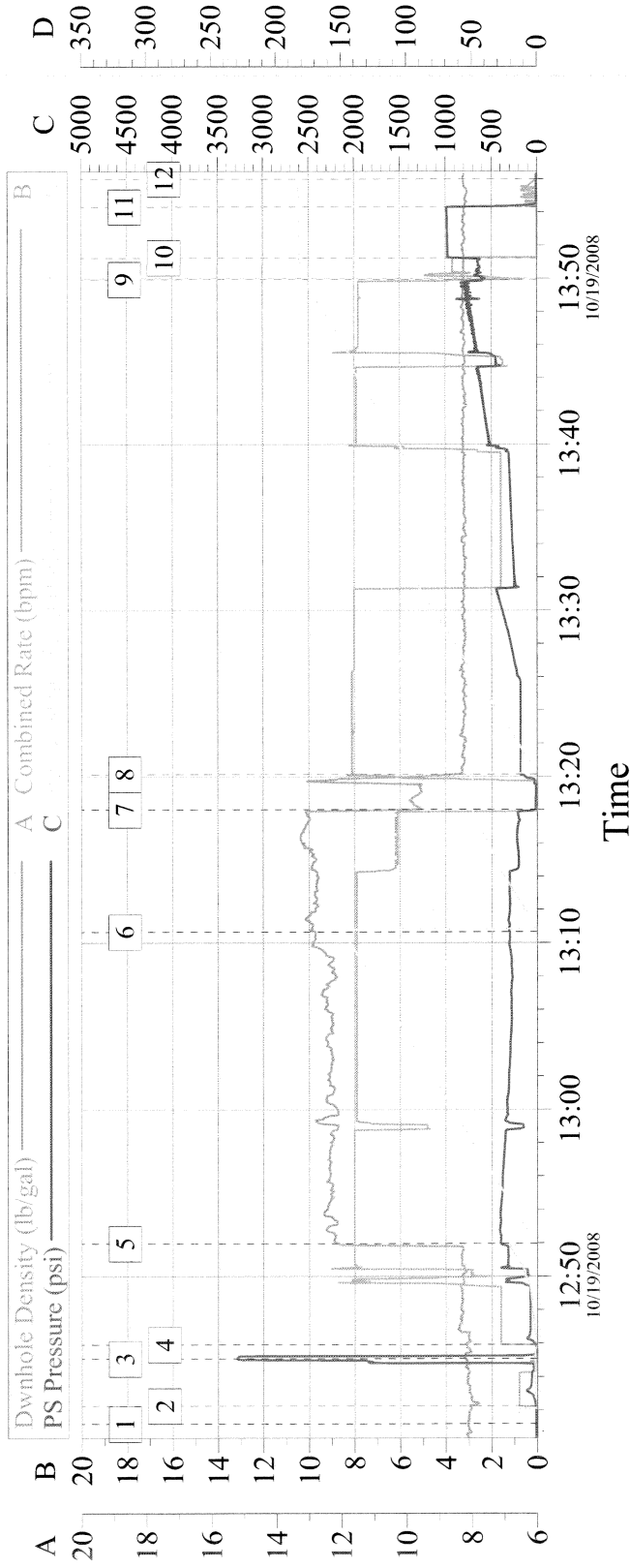
SUMMIT Version: 7.20.130

Sunday, October 19, 2008 02:36:00

Cementing Job Log

Activity Description	Date/Time	Cht #	Rate bbl/ min	Volume bbl		Pressure psig		Comments
				Stage	Total	Tubing	Casing	
Pump Displacement	10/19/2008 13:20		8		189.7		680.0	PUMP FRESH H2O FOR DISPLACEMENT PER COMPANY MAN SLOWED RATE WHEN CEMENT CAME TO SURFACE SO THEY COULD SWAP TO PIT
Slow Rate	10/19/2008 13:49		4		180		410.0	SLOW RATE LAST 10 BBLs PER MIN TO 4 BBLs PER MIN PER COMPANY MAN
Bump Plug	10/19/2008 13:51		4		189.7		1018. 0	HOLD PRESSURE FOR 3 MIN PER COMPANY MAN
Check Floats	10/19/2008 13:54							FLOATS HELD
End Job	10/19/2008 13:55							
Other	10/19/2008 13:56							GOOD RETURNS DURING JOB, DID NOT MOVE PIPE DURING JOB
Other	10/19/2008 13:57							85 BBLs OF CEMENT TO PIT, CHAIN HEAD DOWN
Other	10/19/2008 13:58							THANK YOU FROM HALLIBURTON DIRK HAYES AND CREW

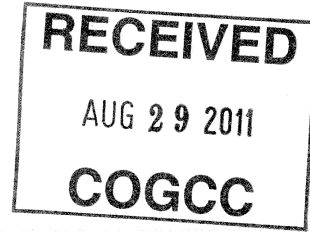
9 5/8 SURFACE



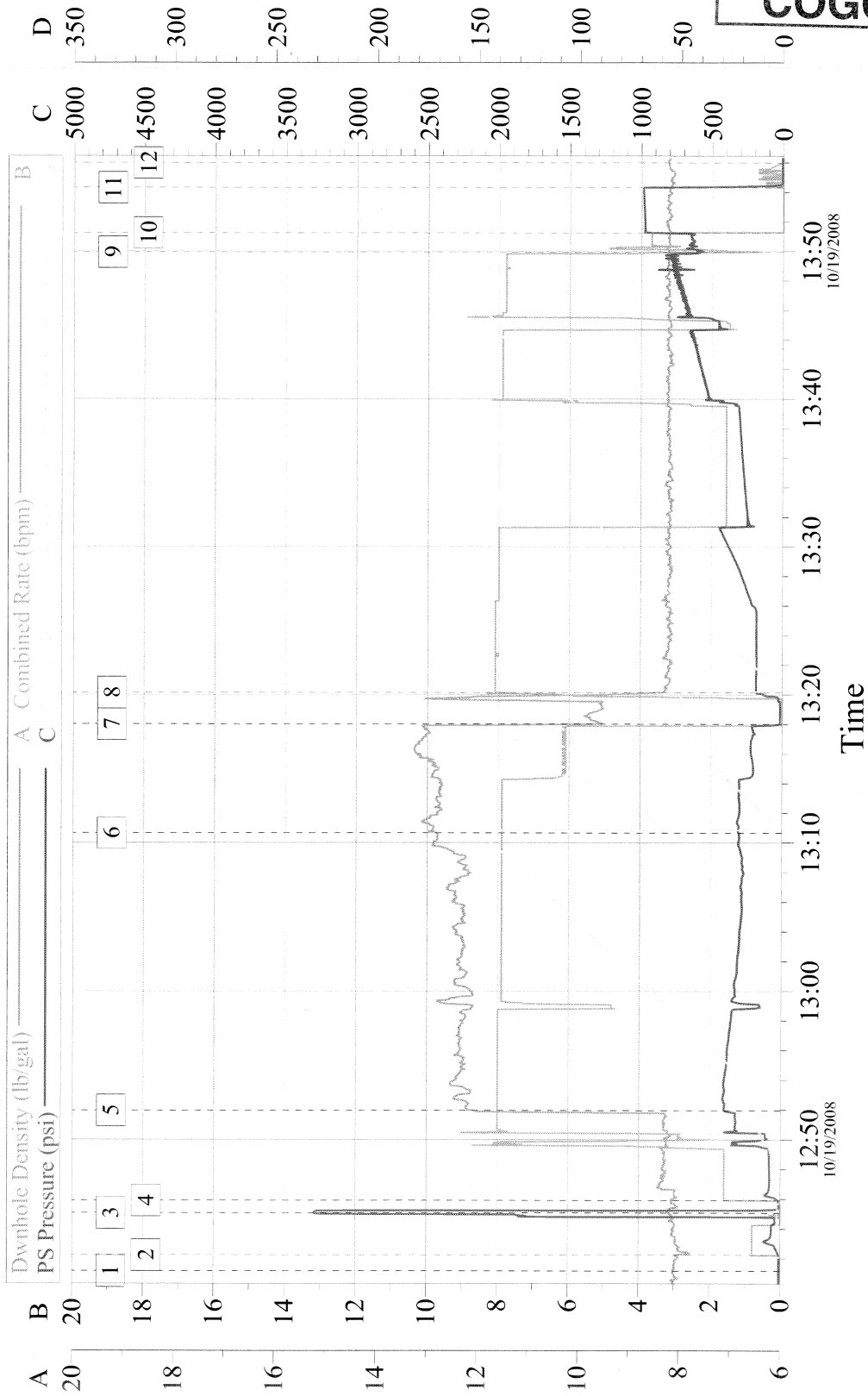
Event Log			
1	START JOB	12:41:10	2
3	TEST LINES	12:45:04	4
5	PUMP LEAD CEMENT	12:51:58	6
7	SHUTDOWN/ DROP TOP PLUG	13:18:00	8
9	SLOW RATE	13:49:56	10
11	CHECK FLOATS	13:54:18	12
		12:42:14	
		12:45:55	
		13:10:39	
		13:20:09	
		13:51:14	
		13:55:59	

Customer:	WILLIAMS PRODUCTION	Job Date:	10-19-08	Ticket #:	6251139
TRUCK #	ELITE 8	OPERATOR	JON GREGORY	ADC USED	YES
CEMENTER	DIRK HAYES	CO REP	DERRYL GLEIM	LEASE	AP 41-23-696

TG Version G3.4.1
 13-Apr-09 15:34



9 5/8 SURFACE



RECEIVED
AUG 29 2011
COGCC

TG Version G34.1
13-Apr-09 15:34

Customer: WILLIAMS PRODUCTION TRUCK # ELITE 8 CEMENTER DIRK HAYES	Job Date: 10-19-08 OPERATOR JON GREGORY CO REP DERRYL GLEIM	Ticket #: 6251139 ADC USED YES LEASE AP 41-23-696
--	--	--