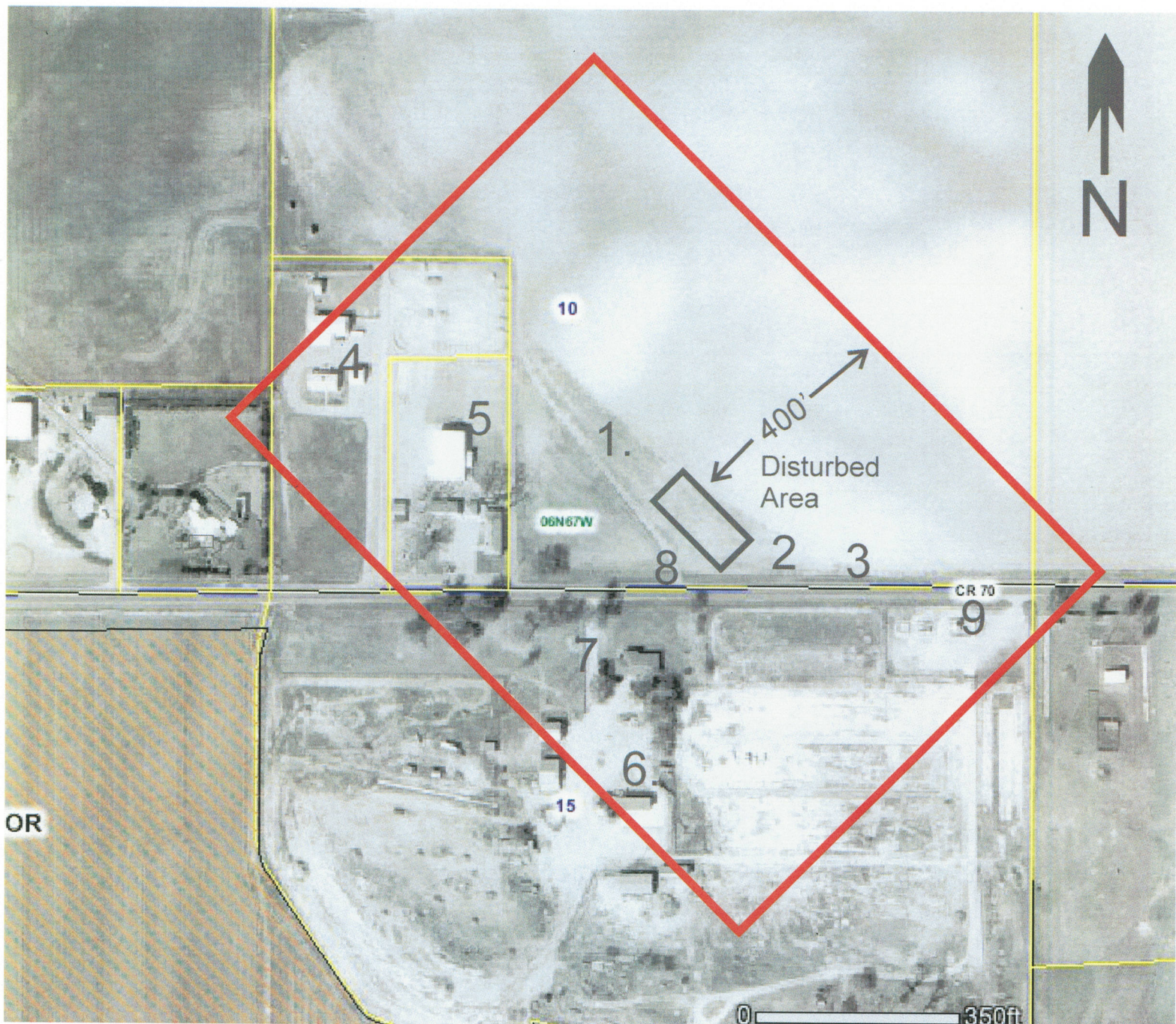


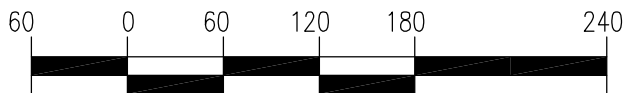
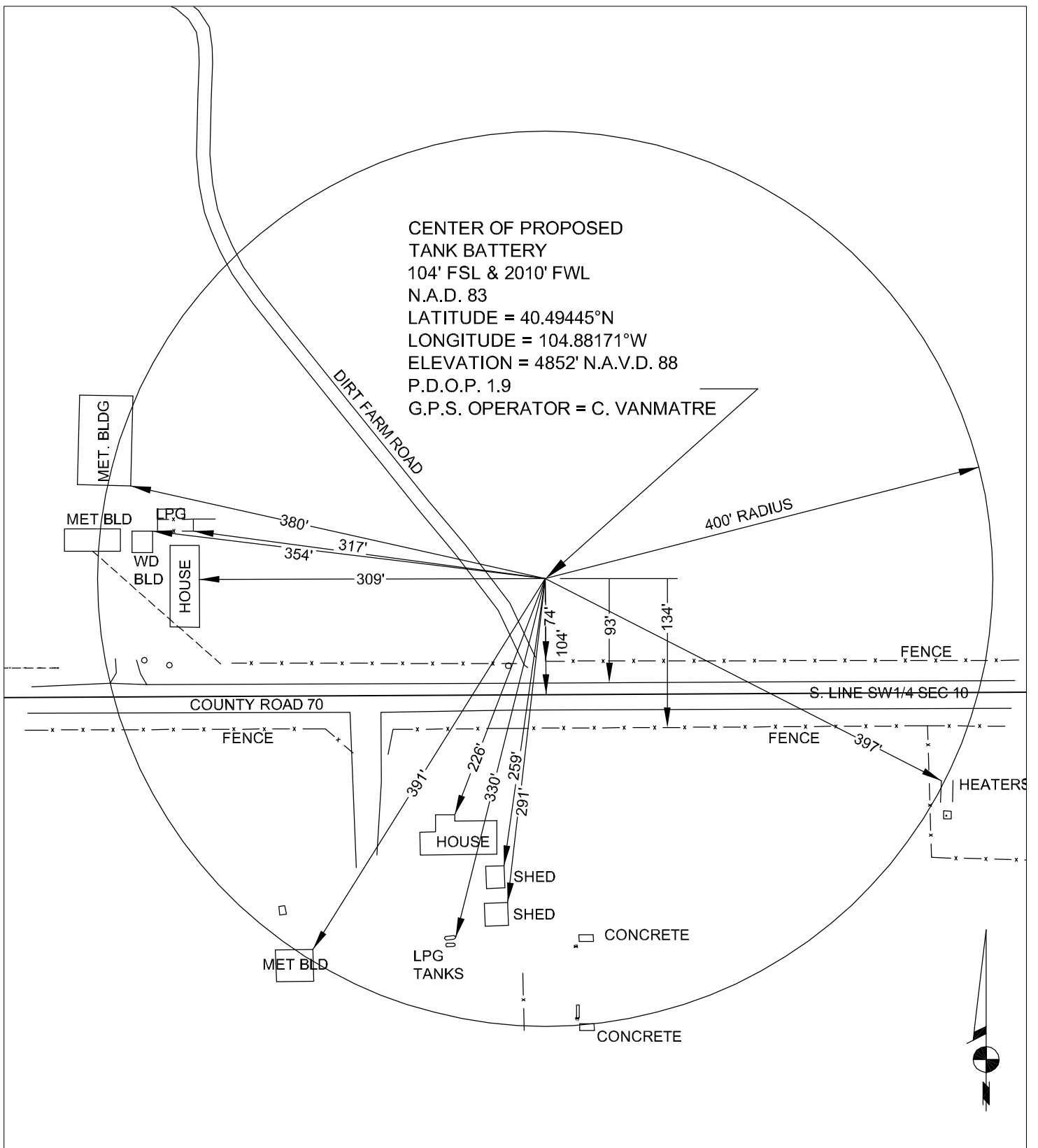
BOWER TANK BATTERY LOCATION MAP

Township 6 North, Range 67 West., 6th P.M.
Section 10: SE/4SW/4



- | | |
|---|---|
| 1. Farm road 25' west of disturbed area, | 6. Metal Bldg. 380' SW of disturbed area, |
| 2. Fence 15' south of disturbed area, | 7. House 200' SW of disturbed area, |
| 3. CR 70 45' South of disturbed area, | 8. Fence 75' south of disturbed area, |
| 4. Metal Bldg. 270' west of disturbed area, | 9. Tank Battery Heater 380' SE of disturbed area. |
| 5. House 270' west of disturbed area, | |

CENTER OF PROPOSED
TANK BATTERY
104' FSL & 2010' FWL
N.A.D. 83
LATITUDE = 40.49445°N
LONGITUDE = 104.88171°W
ELEVATION = 4852' N.A.V.D. 88
P.D.O.P. 1.9
G.P.S. OPERATOR = C. VANMATRE



SCALE 1"=120'

PROPOSED BOWER TANK BATTERY

SECTION 10, T 6 N, R 67 W



POWER™
Surveying Company, Inc.
Established 1948

120 W. 84TH AVENUE
THORNTON, COLORADO 80260

PH. 303-702-1817
FAX. 303-702-1488
WWW.POWERSURVEYING.COM

501-11-107B