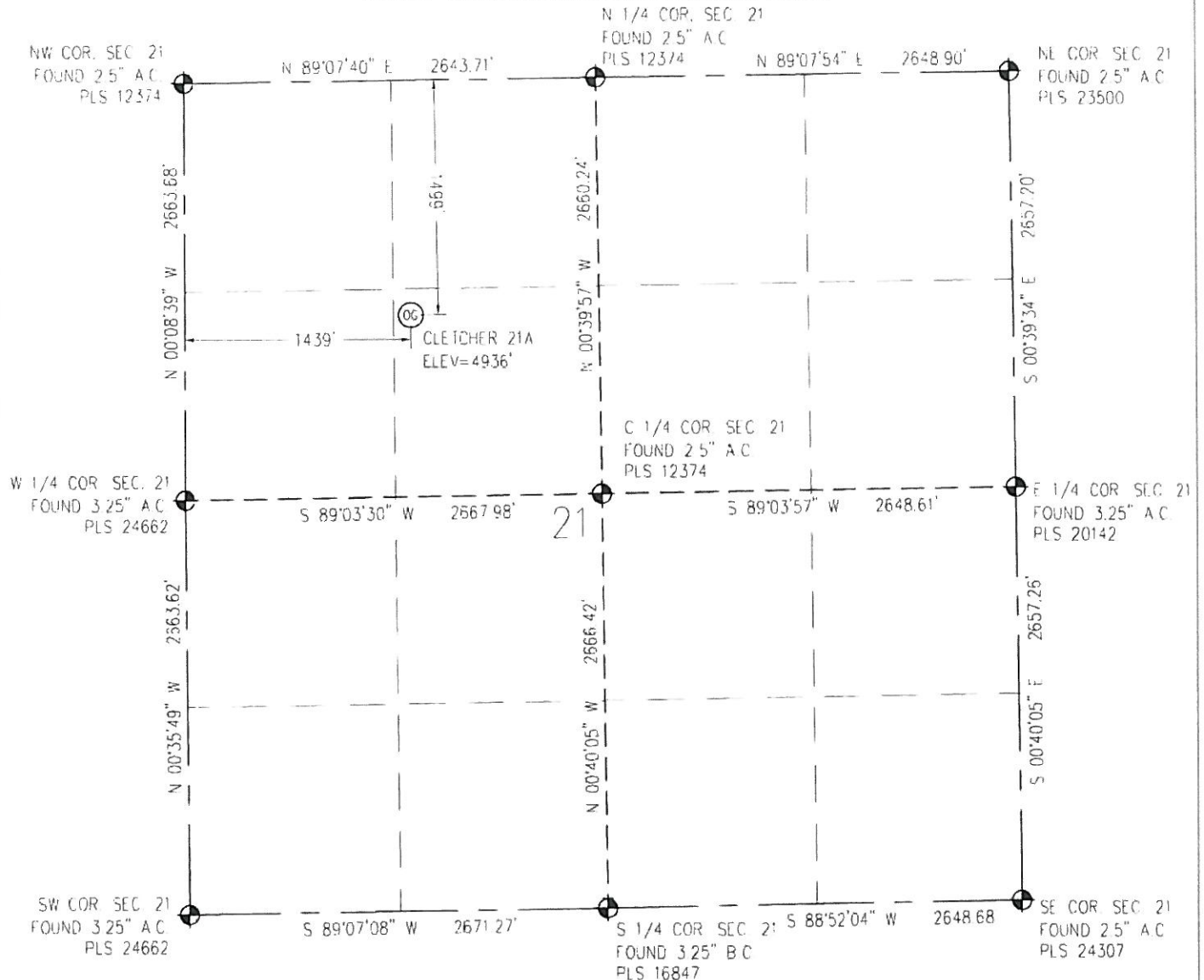


# WELL LOCATION CERTIFICATE

THIS MAP DOES NOT REPRESENT A BOUNDARY SURVEY

SECTION 21  
TOWNSHIP 4 NORTH  
RANGE 68 WEST



Scale 1" = 1000 ft

IN ACCORDANCE WITH A REQUEST FROM CRAIG RASMUSON - SYNERGY RESOURCES, BASELINE ENGINEERING CORP. HAS DETERMINED THE LOCATION OF THE CLETCHER 21A TO BE 1,499' FNL AND 1,432' FWL, AS MEASURED AT NINETY (90) DEGREES FROM THE SECTION LINE OF SECTION 21, TOWNSHIP 4 NORTH, RANGE 68 WEST, 6TH PRINCIPAL MERIDIAN, WELD COUNTY, COLORADO

I HEREBY CERTIFY THAT THIS WELL LOCATION CERTIFICATE WAS PREPARED BY ME, OR UNDER MY DIRECT SUPERVISION, THAT THE FIELD WORK WAS COMPLETED ON 8/19/2011, THAT IT IS NOT A LAND SURVEY PLAT OR AN IMPROVEMENT SURVEY PLAT, AND THAT IT IS NOT TO BE RELIED UPON FOR ESTABLISHMENT OF FENCE, BUILDING, OR OTHER FUTURE IMPROVEMENT LINES

## Notes

- 1) LAT/LONG SHOWN ARE BASED ON A GPS OBSERVATION (NAD83)
- 2) BEARINGS SHOWN ARE GRID BEARINGS OF THE COLORADO STATE PLANE COORDINATE SYSTEM, NORTH ZONE, NORTH AMERICAN DATUM 1983/2007
- 3) GROUND ELEVATIONS ARE BASED ON A GPS OBSERVATION (NAVD 88 DATUM)
- 4) ALL DISTANCES SHOWN ARE FIELD MEASURED UNLESS OTHERWISE NOTED
- 5) THE NEAREST EXISTING WELL IS: NONE IN QUARTER SECTION
- 6) IMPROVEMENTS: SEE LOCATION DRAWING EXHIBIT FOR ALL VISIBLE IMPROVEMENTS WITHIN 600' OF WELL HEAD
- 7) SURFACE USE: WHEAT FIELD

SURFACE HOLE  
LATITUDE: 40.301935° N  
LONGITUDE: 105.012676° W  
PDOP: 1.3  
1/4, 1/4 SE1/4NW1/4  
NEAREST PROPERTY LINE: 1,247' SE

## LEGEND

- - FOUND/SET SURVEY MONUMENT PER MONUMENT RECORD EXCEPTIONS NOTED
- - CALCULATED SURVEY MONUMENT POSITION
- (C) - CALCULATED DIMENSION

*Steven A. Lund*  
August 25, 2011

Steven A. Lund  
Professional Land Surveyor Registration No. 34995  
State of Colorado  
FOR AND ON BEHALF OF BASELINE ENGINEERING CORP.

Completed  
8/25/2011

NOTICE: According to Colorado law you MUST commence any legal action based upon any defect in this WLC within three years after you first discover such defect. In no event may any action based upon any defect in this WLC be commenced more than ten years from this said date of the certification shown hereon.

JOB # SYN04N68W21-01