
OXY GRAND JUNCTION EBUSINESS

**CC 697-09-56A
GRAND VALLEY
Garfield County , Colorado**

Cement Surface Casing
25-Dec-2010

Post Job Summary

The Road to Excellence Starts with Safety

Sold To #: 344034	Ship To #: 2825512	Quote #:	Sales Order #: 7840224
Customer: OXY GRAND JUNCTION EBUSINESS	Customer Rep: Silva, Marco		
Well Name: CC	Well #: 697-09-56A	API/UWI #: 05-045-18135	
Field: GRAND VALLEY	City (SAP): PARACHUTE	County/Parish: Garfield	State: Colorado
Lat: N 39.535 deg. OR N 39 deg. 32 min. 6.119 secs.	Long: W 108.222 deg. OR W -109 deg. 46 min. 40.379 secs.		
Contractor:	Rig/Platform Name/Num: WHITE MOUNTAIN 272		
Job Purpose: Cement Surface Casing			
Well Type: Development Well	Job Type: Cement Surface Casing		
Sales Person: DUNNING, DUSTIN	Srvc Supervisor: DANIEL, EVERETT	MBU ID Emp #: 337325	

Job Personnel

HES Emp Name	Exp Hrs	Emp #	HES Emp Name	Exp Hrs	Emp #	HES Emp Name	Exp Hrs	Emp #
BANKS, BRENT A	40	371353	COSTELDIA, BROCK James	40	476115	DANIEL, EVERETT Dean	40	337325
WEAVER, CARLTON Russell	40	457698						

Equipment

HES Unit #	Distance-1 way	HES Unit #	Distance-1 way	HES Unit #	Distance-1 way	HES Unit #	Distance-1 way
10001431	120 mile	10025062	120 mile	10592964	120 mile	10616651C	120 mile
10744549	120 mile	10804567	120 mile	10804579	120 mile	10938658	120 mile
10951248	120 mile	10995025	120 mile				

Job Hours

Date	On Location Hours	Operating Hours	Date	On Location Hours	Operating Hours	Date	On Location Hours	Operating Hours
12/24/10	21	9	12/25/10	19	5			
TOTAL	40	14	Total is the sum of each column separately					

Job

Formation Name					Date				Time		Time Zone		
Formation Depth (MD)		Top			Bottom				Called Out	23 - Dec - 2010	15:00	MST	
Form Type			BHST						On Location	24 - Dec - 2010	03:30	MST	
Job depth MD		2690. m		Job Depth TVD			2690. m		Job Started	24 - Dec - 2010	10:47	MST	
Water Depth			Wk Ht Above Floor			3. m			Job Completed	25 - Dec - 2010	17:14	MST	
Perforation Depth (MD)		From			To				Departed Loc	25 - Dec - 2010	19:30	MST	

Well Data

Description	New / Used	Max pressure MPa	Size mm	ID mm	Weight kg/m	Thread	Grade	Top MD m	Bottom MD m	Top TVD m	Bottom TVD m
-------------	------------	------------------	---------	-------	-------------	--------	-------	----------	-------------	-----------	--------------

Sales/Rental/3rd Party (HES)

Description	Qty	Qty uom	Depth	Supplier
PLUG,CMTG,TOP,9 5/8,HWE,8.16 MIN/9.06 MA	1	EA		
R/A DENSOMETER W/CHART RECORDER,/JOB,ZI	1	JOB		
PORT. DATA ACQUIS. W/OPTICEM RT W/HES	1	EA		
ADC (AUTO DENSITY CTRL) SYS, /JOB,ZI	1	JOB		

Tools and Accessories

Type	Size	Qty	Make	Depth	Type	Size	Qty	Make	Depth	Type	Size	Qty	Make
Guide Shoe					Packer					Top Plug			
Float Shoe					Bridge Plug					Bottom Plug			
Float Collar					Retainer					SSR plug set			
Insert Float										Plug Container			
Stage Tool										Centralizers			

Miscellaneous Materials

Gelling Agt	Conc	Surfactant	Conc	Acid Type	Qty	Conc	%
Treatment Fld	Conc	Inhibitor	Conc	Sand Type	Size	Qty	

Fluid Data									
Stage/Plug #: 1									
Fluid #	Stage Type	Fluid Name	Qty	Qty uom	Mixing Density kg/m3	Yield m3/sk	Mix Fluid m3/tonne	Rate m3/min	Total Mix Fluid m3/tonne
1	Water Spacer		20	bbl	8.33	.0	.0	.0	
2	GEL WATER		20	bbl	.	.0	.0	.0	
3	Water Spacer		20	bbl	.	.0	.0	.0	
4	Lead Cement	VERSACEM (TM) SYSTEM (452010)	1050	sacks	12.3	2.33	12.62		12.62
12.62 Gal		FRESH WATER							
5	Tail Cement	VERSACEM (TM) SYSTEM (452010)	160	sacks	12.8	2.07	10.67		10.67
10.67 Gal		FRESH WATER							
6	Displacement		191.3	bbl	.	.0	.0	.0	
7	Topout Cement	HALCEM (TM) SYSTEM (452986)	345	sacks	12.5	1.97	10.96		10.96
10.96 Gal		FRESH WATER							
Calculated Values		Pressures		Volumes					
Displacement	191.3	Shut In: Instant		Lost Returns		Cement Slurry	494.7	Pad	
Top Of Cement	121	5 Min		Cement Returns		Actual Displacement	191.3	Treatment	
Frac Gradient		15 Min		Spacers	60	Load and Breakdown		Total Job	
Rates									
Circulating	5	Mixing		5	Displacement	5	Avg. Job		5
Cement Left In Pipe	Amount	43 ft	Reason	Shoe Joint					
Frac Ring # 1 @	ID		Frac ring # 2 @	ID		Frac Ring # 3 @	ID		Frac Ring # 4 @
The Information Stated Herein Is Correct				Customer Representative Signature					

The Road to Excellence Starts with Safety

Sold To #: 344034	Ship To #: 2825512	Quote #:	Sales Order #: 7840224
Customer: OXY GRAND JUNCTION EBUSINESS		Customer Rep: Silva, Marco	
Well Name: CC	Well #: 697-09-56A	API/UWI #: 05-045-18135	
Field: GRAND VALLEY	City (SAP): PARACHUTE	County/Parish: Garfield	State: Colorado
Legal Description:			
Lat: N 39.535 deg. OR N 39 deg. 32 min. 6.119 secs.		Long: W 108.222 deg. OR W -109 deg. 46 min. 40.379 secs.	
Contractor:		Rig/Platform Name/Num: WHITE MOUNTAIN 272	
Job Purpose: Cement Surface Casing			Ticket Amount:
Well Type: Development Well		Job Type: Cement Surface Casing	
Sales Person: DUNNING, DUSTIN		Srvc Supervisor: DANIEL, EVERETT	MBU ID Emp #: 337325

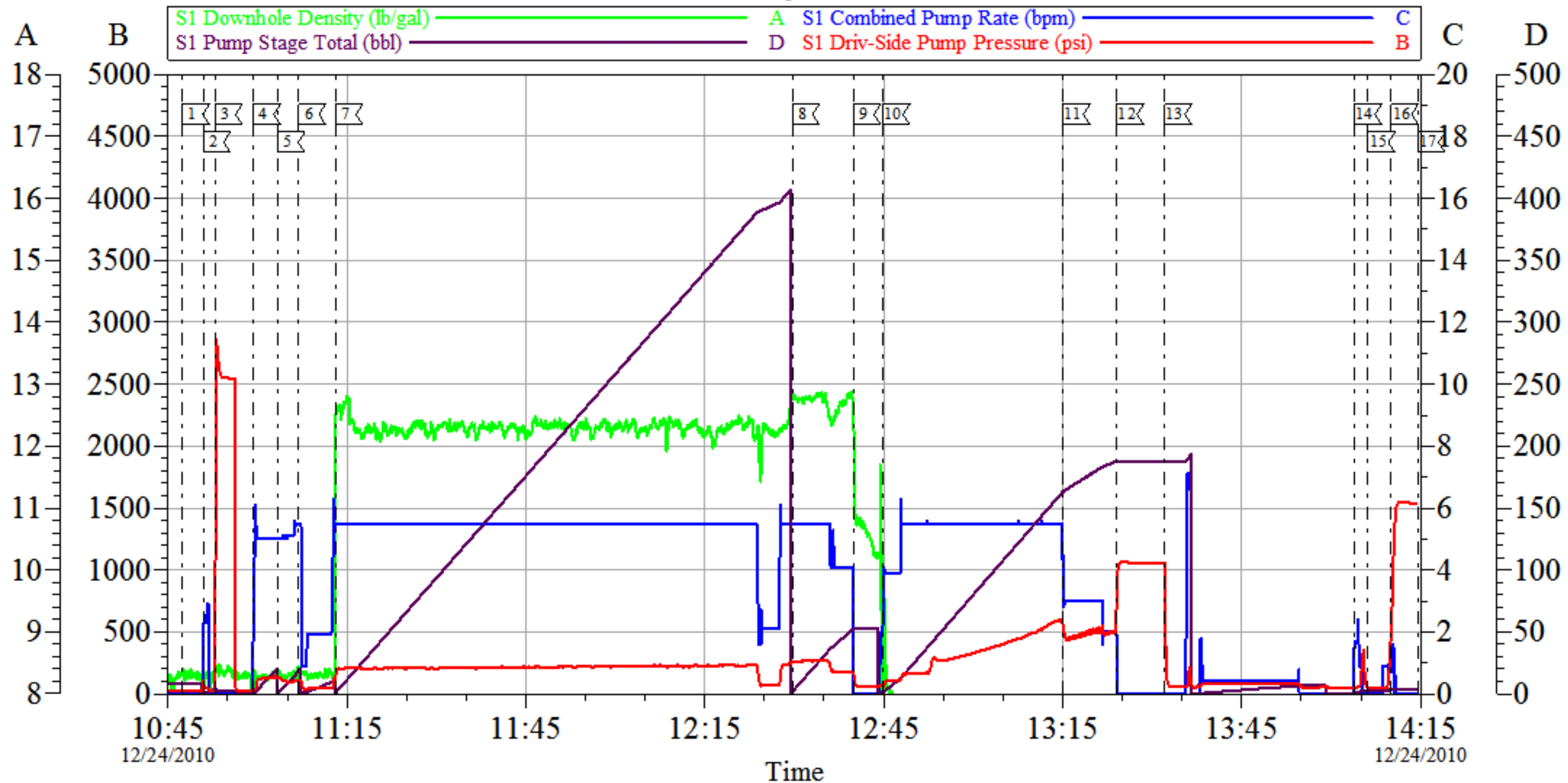
Activity Description	Date/Time	Cht #	Rate m3/min	Volume m3		Pressure MPa		Comments
				Stage	Total	Tubing	Casing	
Call Out	12/23/2010 15:00							
Depart Yard Safety Meeting	12/23/2010 19:45							
Depart from Service Center or Other Site	12/23/2010 20:00							Waiting on cement to be loaded until 2000 hrs.
Arrive at Location from Service Center	12/24/2010 03:30							Arrive 5.5 hrs. late. Winter conditions, slick, steep roads and waiting on blades to escort trucks contributing factors.
Assessment Of Location Safety Meeting	12/24/2010 03:45							
Consult with Co. Rep.	12/24/2010 04:00							Consult with Co. Rep. Verify materials and equipment on location including cement & H2O totals
Safety Meeting - Pre Rig-Up	12/24/2010 06:00							
Rig-Up Equipment	12/24/2010 06:30							Went to H&P 330 to retrieve pump, Elite#4, Spotted Bin, Loaded two freuhaufs and rig up two 660s. Iron to rig, Iron to pit, Two water hoses
Rig-Up Completed	12/24/2010 10:00							
Safety Meeting - Pre Job	12/24/2010 10:30							
Start Job	12/24/2010 10:47							
Prime Pumps	12/24/2010 10:50		2	2			39.0	Fresh Water

Activity Description	Date/Time	Cht #	Rate m3/min	Volume m3		Pressure MPa		Comments
				Stage	Total	Tubing	Casing	
Test Lines	12/24/2010 10:52		0.5	0.1			2500.0	Fresh Water
Pump Spacer 1	12/24/2010 10:59		5.5	20			130.0	Fresh Water
Pump Spacer 2	12/24/2010 11:03		5.5	20			164.0	LGC 36 Gel Spacer
Pump Spacer 1	12/24/2010 11:06		5.5	20			200.0	Fresh Water
Pump Lead Cement	12/24/2010 11:13		5.5	435.7			227.0	1050 sks. VERSACEM@ 12.3#, 2.33 Yield, 12.62 H2O req.
Pump Tail Cement	12/24/2010 12:29		5.5	59			245.0	160 sks. VERSACEM@ 12.8#, 2.07 Yield, 10.67 H2O req.
Shutdown	12/24/2010 12:39							
Drop Top Plug	12/24/2010 12:39							
Pump Displacement	12/24/2010 12:44		5.5	191.3			645.0	Clay Fix Displacement
Slow Rate	12/24/2010 13:15		2	181			495.0	
Bump Plug	12/24/2010 13:29		2	191.3			1035.0	Bumped plug @ calculated displacement and 500 psi over
Check Floats	12/24/2010 13:32							Floats Held
Comment	12/24/2010 14:03		0.5	10.5			45.0	Sugar Water
Pressure Up Well	12/24/2010 14:10		0.5	1			1500.0	Pressure test casing
Release Casing Pressure	12/24/2010 14:44							Chart quit working 5 min. into casing pressure test. Casing held 1500 psi for 30 min
Post-Job Safety Meeting (Pre Rig-Down)	12/24/2010 15:09							
Safety Meeting - Departing Location	12/24/2010 15:09							
Depart Location for Service Center or Other Site	12/24/2010 15:09							Traveled to H&P 353 to get top out truck
Pre-Job Safety Meeting	12/24/2010 22:00							
Start Job	12/24/2010 22:15							

Activity Description	Date/Time	Cht #	Rate m3/ min	Volume m3		Pressure MPa		Comments
				Stage	Total	Tubing	Casing	
Prime Pumps	12/24/2010 22:16		1.5	2			38.0	Fresh Water
Pump Cement	12/24/2010 22:21		2	28			92.0	80 sks. Top Out Cement @ 12.5#, 1.97 Yeild, 10.96 H2O Req.
Shutdown	12/24/2010 22:39							No Returns to Surface
End Job	12/24/2010 22:39							
Pre-Job Safety Meeting	12/25/2010 01:10							
Start Job	12/25/2010 01:16							
Prime Pumps	12/25/2010 01:16		0.8	2			54.0	Fresh Water
Pump Cement	12/25/2010 01:21		2	28			94.0	80 sks. Top Out Cement @ 12.5#, 1.97 Yeild, 10.96 H2O Req.
Shutdown	12/25/2010 01:36							No Returns to Surface
End Job	12/25/2010 01:36							
Pre-Job Safety Meeting	12/25/2010 13:10							
Start Job	12/25/2010 13:15							
Prime Pumps	12/25/2010 13:15		1.5	2			48.0	Fresh Water
Pump Cement	12/25/2010 13:20		2.5	35			130.0	100 sks. Top Out Cement @ 12.5#, 1.97 Yeild, 10.96 H2O Req.
Shutdown	12/25/2010 13:36							No Returns To Surface
End Job	12/25/2010 13:37							
Pre-Job Safety Meeting	12/25/2010 16:00							
Start Job	12/25/2010 16:12							
Prime Pumps	12/25/2010 16:13		1.5	2			50.0	Fresh Water
Pump Cement	12/25/2010 16:20		2	30			115.0	85 sks. Top Out Cement @ 12.5#, 1.97 Yeild, 10.96 H2O Req.
Shutdown	12/25/2010 17:13							Cement returned to surface

Activity Description	Date/Time	Cht #	Rate m3/ min	Volume m3		Pressure MPa		Comments
				Stage	Total	Tubing	Casing	
End Job	12/25/2010 17:14							
Pre-Rig Down Safety Meeting	12/25/2010 17:30							
Rig-Down Equipment	12/25/2010 17:45							
Rig-Down Completed	12/25/2010 19:00							
Pre-Convoy Safety Meeting	12/25/2010 19:15							
Depart Location for Service Center or Other Site	12/25/2010 19:30							

OXY Surface



Local Event Log			
1 Start Job	10:47:25	2 Prime Lines	10:50:54
3 Test Lines	10:52:56	4 Pump H2O Spacer	10:59:18
5 Pump Gel Spacer	11:03:25	6 Pump H2O Spacer	11:06:54
7 Pump Lead Cement	11:13:04	8 Pump Tail Cement	12:29:41
9 Shut Down/Drop Top Plug	12:39:56	10 Pump H2O Displacement	12:44:51
11 Slow Rate	13:15:03	12 Bump Plug	13:24:05
13 Check Floats	13:32:06	14 Pump Down Parasite String	14:03:57
15 Shut Down	14:06:12	16 Pressure Test Casing	14:10:06
17 End Job	14:14:36		

Customer: Oxy
Well Description: CC-697-09-56A
Company Rep: Andy Goddeyne

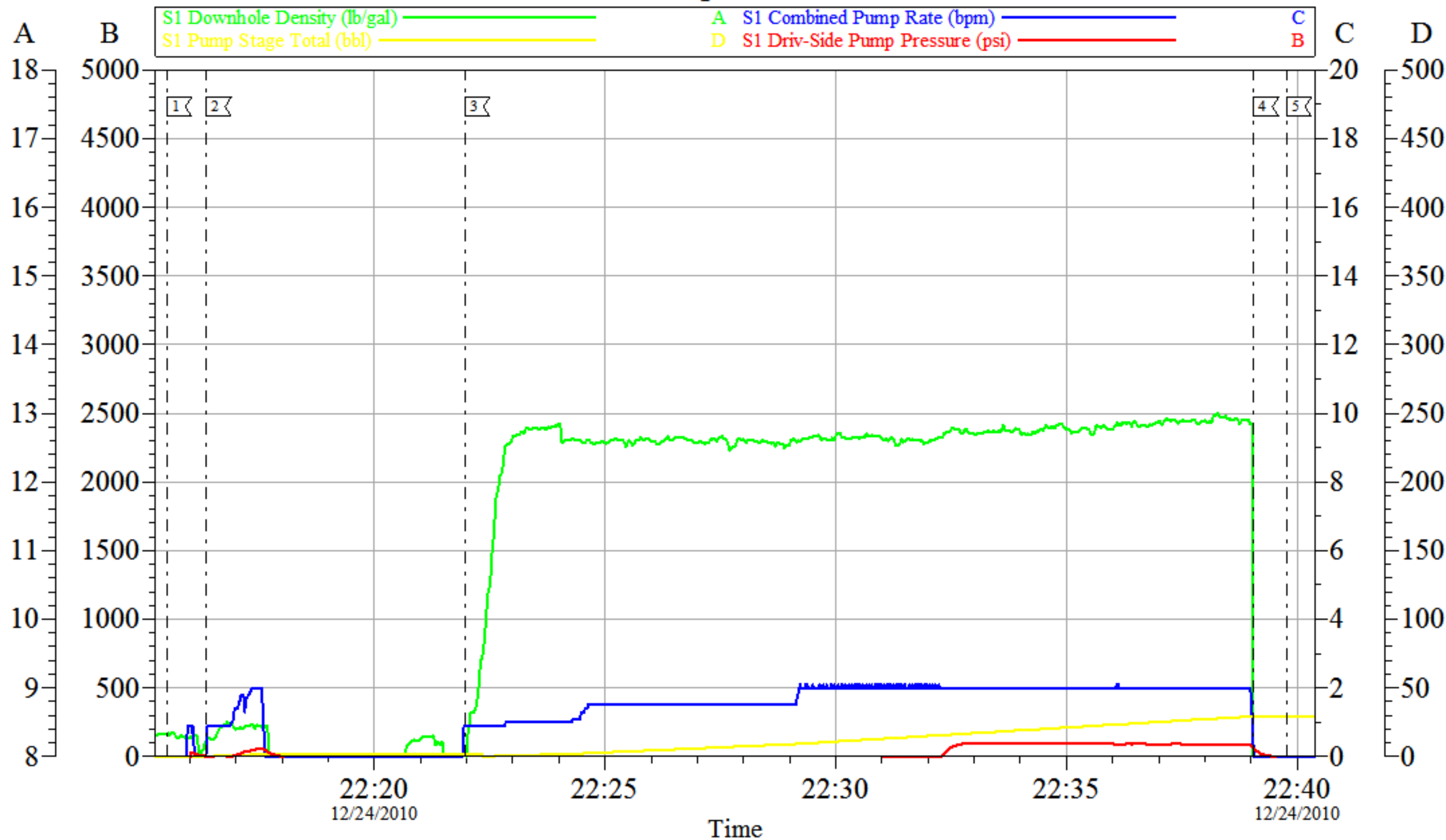
Job Date: 24-Dec-2010
Job Type: Surface
Cement Supervisor: Dean Daniel

Sales Order #: 7840224
ADC Used: Yes
Elite #/Operator: 4/Brent Banks

OptiCem v6.4.4
24-Dec-10 14:52

OXY

Top Out I

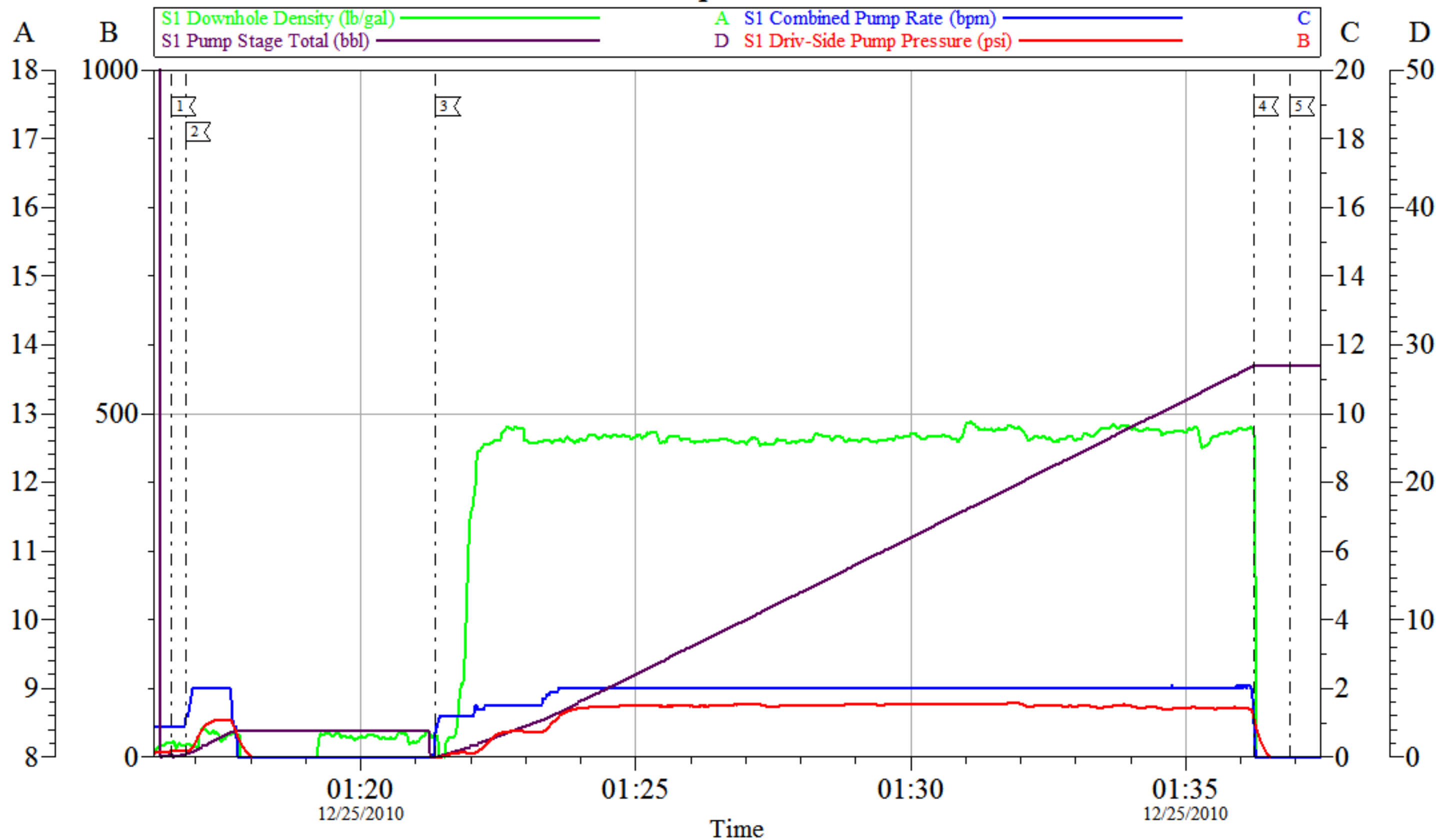


Local Event Log					
1	Start Job	22:15:30	2	Prime Lines	22:16:21
			3	Pump Top Out Cement	22:21:57
4	Shut Down	22:39:03	5	End Job	22:39:46

Customer: Oxy	Job Date: 24-Dec-2010	Sales Order #: 7840224
Well Description: CC-697-09-56A	Job Type: Surface Top Out	ADC Used: Yes
Company Rep: Andy Goddeyne	Cement Supervisor: Dean Daniel	Elite #/Operator: 4/Brent Banks

OXY

Top Out II



Local Event Log					
1	Start Job	01:16:33	2	Prime Lines	01:16:49
3	Pump Top Out Cement	01:21:21			
4	Shut Down	01:36:14	5	End Job	01:36:53

Customer: Oxy
Well Description: CC-697-09-56A
Company Rep: Andy Goddyne

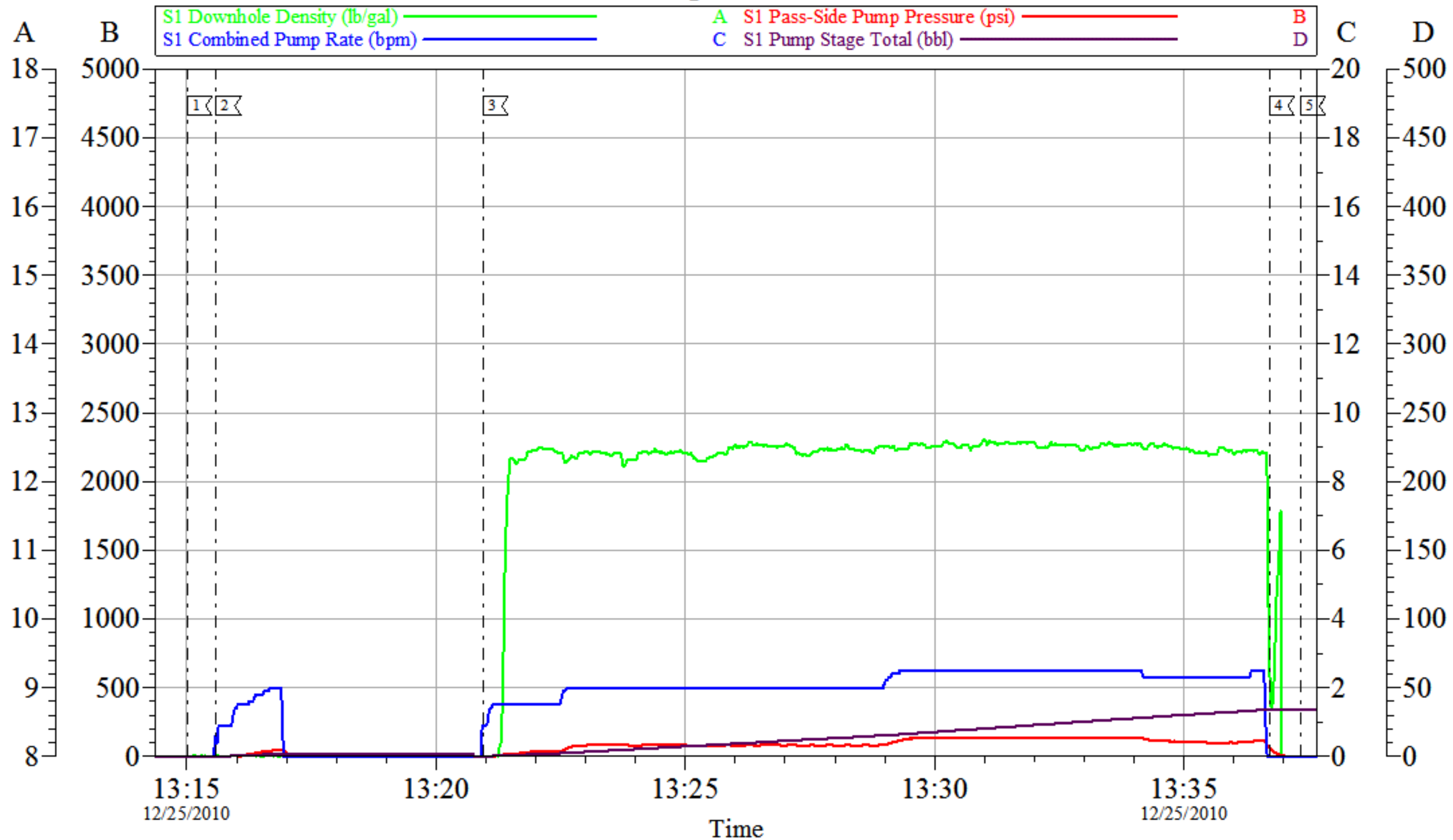
Job Date: 25-Dec-2010
Job Type: Surface Top Out
Cement Supervisor: Dean Daniel

Sales Order #: 7840224
ADC Used: Yes
Elite #/Operator: 4/Brent Banks

OptiCem v6.4.4
25-Dec-10 01:47

OXY

Top Out III



Local Event Log					
1	Start Job	13:15:00	2	Prime Lines	13:15:35
3	Pump Top Out Cement	13:20:57	4	Shut Down	13:36:43
5	End Job	13:37:20			

Customer: OXY
 Well Description: CC-697-09-56A
 Company Rep: Andy Goddeyne

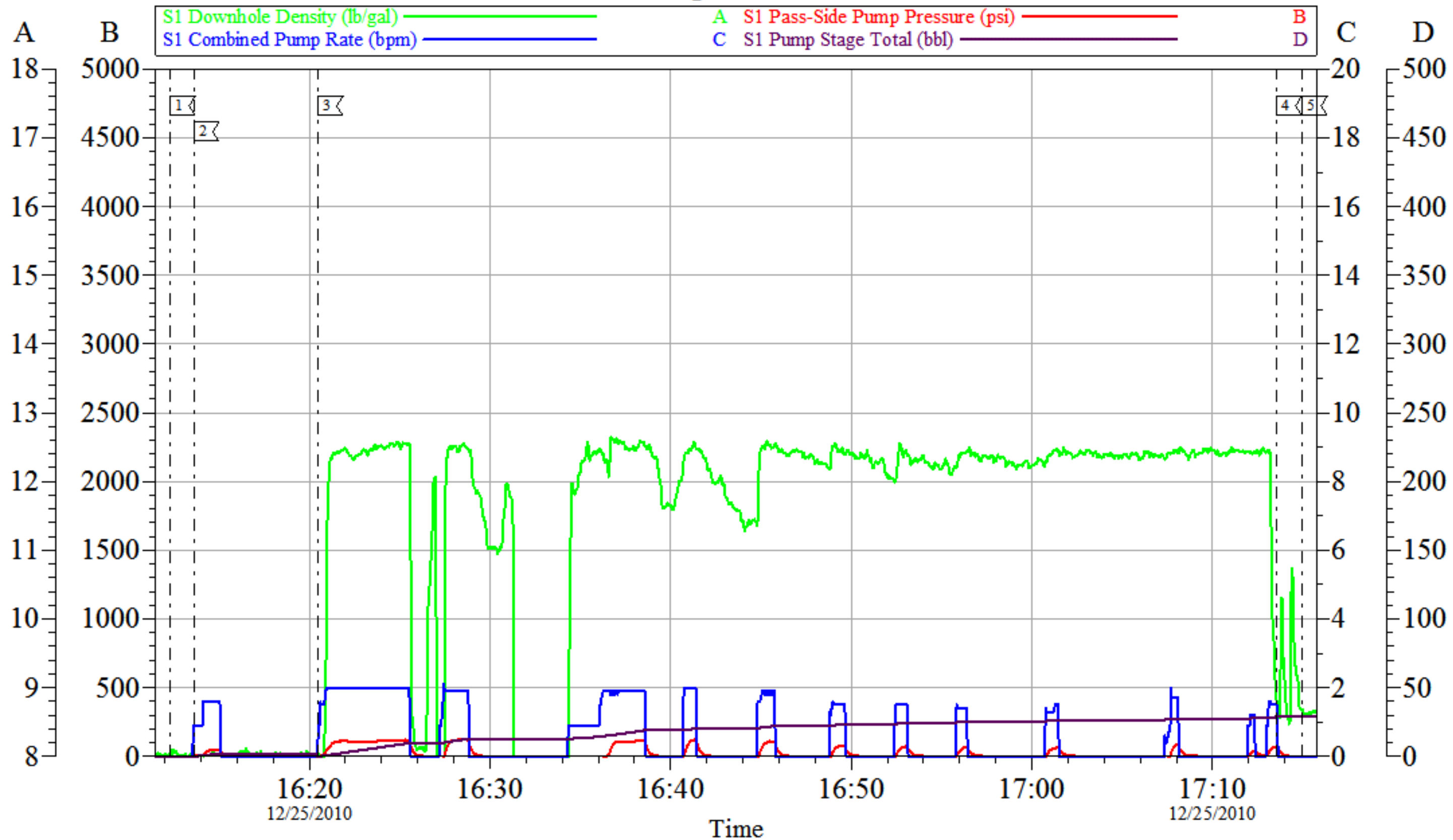
Job Date: 25-Dec-2010
 Job Type: Surface Top Out
 Cement Supervisor: Dean Daniel

Sales Order #: 7840224
 ADC Used: Yes
 Elite #/Operator: 4/Rusty Weaver

OptiCem v6.4.4
 25-Dec-10 13:48

OXY

Top Out IV



Local Event Log					
1	Start Job	16:12:18	2	Prime Lines	16:13:37
3	Pump Top Out Cement	16:20:29	4	Shut Down	17:13:33
5	End Job	17:14:58			

Customer: OXY
 Well Description: CC-697-09-56A
 Company Rep: Andy Goddeyne

Job Date: 25-Dec-2010
 Job Type: Surface Top Out
 Cement Supervisor: Dean Daniel

Sales Order #: 7840224
 ADC Used: Yes
 Elite #/Operator: 4/Rusty Weaver

OptiCem v6.4.4
 25-Dec-10 17:31