

# FOUNDATION ENERGY MANAGEMENT

FIGURE #6

## BOTTOM HOLE DRAWING FOR

BANTA RIDGE FEDERAL #4A-18-1-103,

#5-18-1-103 & #6-18-1-103

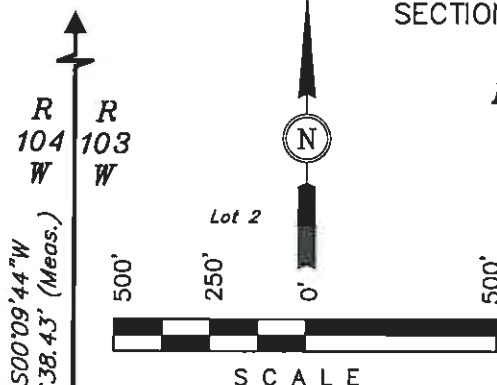
SECTION 18, T1S, R103W, 6th P.M.

LOT 4

NW 1/4

NE 1/4

NW Cor. Sec. 18  
1936 Brass Cap,  
1.0' High, Pile of Stones  
Lat: 39.968467°  
Long: 109.007658°



DATE: 07-19-11  
DRAWN BY: M.D.



R 104 W  
R 103 W  
500°09'44"W  
2638.43' (Meas.)

1936 Brass Cap,  
2.0' High, Pile of Stones  
Lat: 39.961227°  
Long: 109.007683°

500°01'08"E - 2650.45' (Meas.)

BOTTOM HOLE  
Banta Ridge Federal  
#5-18-1-103

BOTTOM HOLE  
Banta Ridge Federal  
#6-18-1-103

Existing  
Banta Ridge  
Federal  
#4-18-1-103

SW 1/4

SE 1/4

BOTTOM HOLE  
Banta Ridge Federal  
#4A-18-1-103

1936 Brass Cap,  
0.5' High, Pile of Stones,  
Lat: 39.953947°  
Long: 108.998864°

True  
Position

1936 Brass Cap,  
2.0' High, Pile of Stones  
Lat: 39.953952°  
Long: 109.007675°

589°56'03"E - 2471.01' (Meas.)

589°58'02"E  
2649.57' (Meas.)

# FOUNDATION ENERGY MANAGEMENT

## PRODUCTION FACILITY LAYOUT FOR

BANTA RIDGE FEDERAL #4A-18-1-103,

#5-18-1-103 & #6-18-1-103

SECTION 18, T1S, R103W, 6th P.M.

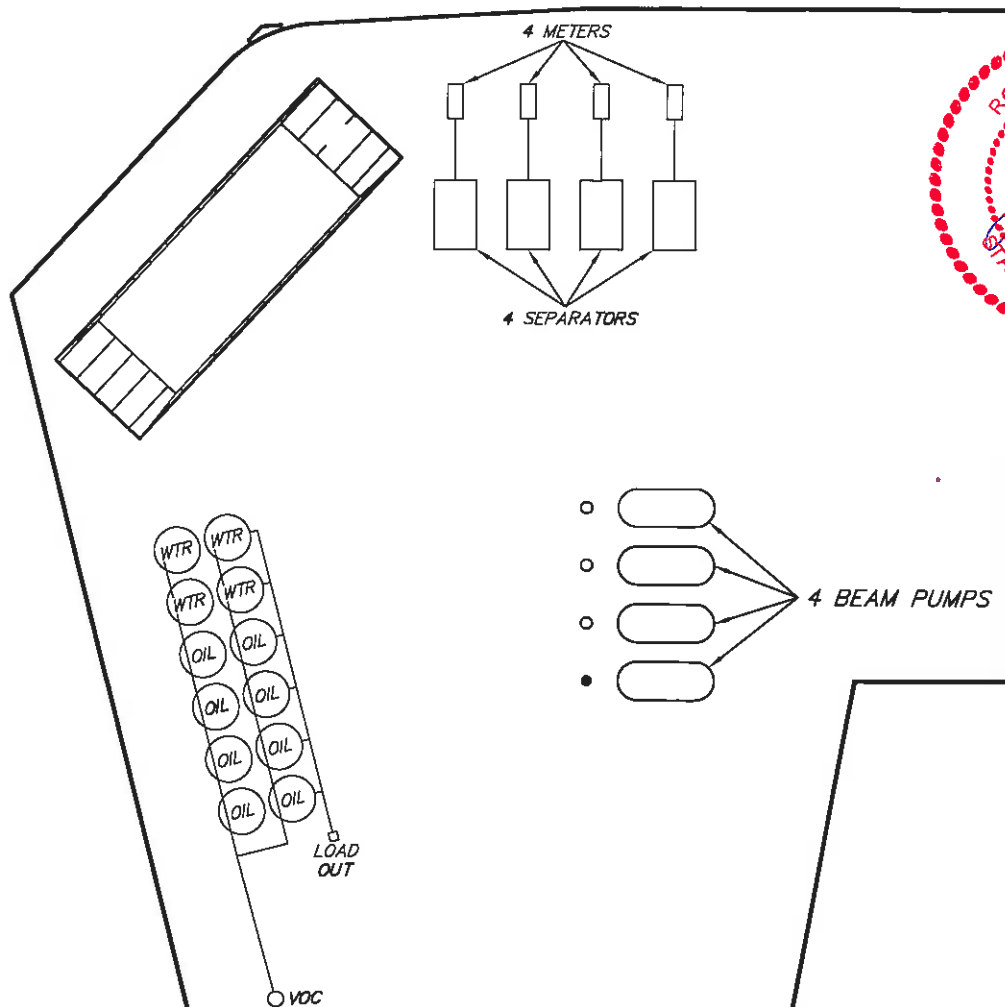
LOT 4

FIGURE #3

SCALE: 1" = 50'

DATE: 07-19-11

DRAWN BY: M.D.



Proposed Road  
Re-Route

Existing Road  
(Use as Access)

UINTAH ENGINEERING & LAND SURVEYING  
85 So. 200 East • Vernal, Utah 84078 • (435) 789-1017