

---

# **OXY GRAND JUNCTION EBUSINESS**

---

**CC 697-09-48A  
GRAND VALLEY  
Garfield County , Colorado**

**Cement Surface Casing  
30-Dec-2010**

**Post Job Summary**

### The Road to Excellence Starts with Safety

Sold To #: 344034		Ship To #: 2825559		Quote #:		Sales Order #: 7840233	
Customer: OXY GRAND JUNCTION EBUSINESS				Customer Rep: Silva, Marco			
Well Name: CC			Well #: 697-09-48A			API/UWI #: 05-045-18134	
Field: GRAND VALLEY		City (SAP): PARACHUTE		County/Parish: Garfield		State: Colorado	
Lat: N 39.535 deg. OR N 39 deg. 32 min. 6.191 secs.				Long: W 108.222 deg. OR W -109 deg. 46 min. 40.22 secs.			
Contractor: OXY			Rig/Platform Name/Num: WHITE MOUNTAIN 272				
Job Purpose: Cement Surface Casing							
Well Type: Development Well			Job Type: Cement Surface Casing				
Sales Person: DUNNING, DUSTIN			Srvc Supervisor: ERIC CARTER		MBU ID Emp #: 345598		

### Job Personnel

HES Emp Name	Exp Hrs	Emp #	HES Emp Name	Exp Hrs	Emp #	HES Emp Name	Exp Hrs	Emp #
CARTER, ERIC Earl	10.5	345598	FITZPATRICK, KEVIN Allen	10.5	487085	PONDER, THOMAS Lynn	10.5	427112
SIMINEO, JEROD M	10.5	479954	WYCKOFF, RYAN Scott	10.5	476117	YUTZY, BRIAN Matthew	10.5	478510

### Equipment

HES Unit #	Distance-1 way	HES Unit #	Distance-1 way	HES Unit #	Distance-1 way	HES Unit #	Distance-1 way
10867322	120 mile	10951251	120 mile	10998512	120 mile	11560046	120 mile
11562538	120 mile						

### Job Hours

Date	On Location Hours	Operating Hours	Date	On Location Hours	Operating Hours	Date	On Location Hours	Operating Hours
12/30/10	10.5	7.5						

<b>TOTAL</b>	Total is the sum of each column separately							
--------------	--	--	--	--	--	--	--	--

### Job

Formation Name	Top	Bottom	Called Out	Date	Time	Time Zone
<b>Formation Depth (MD)</b>				N/A		
<b>Form Type</b>	BHST		<b>On Location</b>	30 - Dec - 2010	01:00	MST
<b>Job depth MD</b>	2606.7 ft	<b>Job Depth TVD</b>	2606.7 ft	<b>Job Started</b>	30 - Dec - 2010	12:09 MST
<b>Water Depth</b>		<b>Wk Ht Above Floor</b>	5. ft	<b>Job Completed</b>	30 - Dec - 2010	18:16 MST
<b>Perforation Depth (MD)</b>	<b>From</b>	<b>To</b>	<b>Departed Loc</b>	30 - Dec - 2010	20:10	MST

### Well Data

Description	New / Used	Max pressure psig	Size in	ID in	Weight lbm/ft	Thread	Grade	Top MD ft	Bottom MD ft	Top TVD ft	Bottom TVD ft
OPEN HOLE				14.75				.	2604.		
SURFACE CASING	Unknown		9.625	8.921	36.		J-55	.	2606.7		

### Sales/Rental/3<sup>rd</sup> Party (HES)

Description	Qty	Qty uom	Depth	Supplier
PLUG,CMTG,TOP,9 5/8,HWE,8.16 MIN/9.06 MA	1	EA		
R/A DENSOMETER W/CHART RECORDER,/JOB,ZI	1	JOB		
PORT. DATA ACQUIS. W/OPTICEM RT W/HES	1	EA		
ADC (AUTO DENSITY CTRL) SYS, /JOB,ZI	1	JOB		

### Tools and Accessories

Type	Size	Qty	Make	Depth	Type	Size	Qty	Make	Depth	Type	Size	Qty	Make
Guide Shoe					Packer					Top Plug	9.625"	1	
Float Shoe					Bridge Plug					Bottom Plug			
Float Collar					Retainer					SSR plug set			
Insert Float										Plug Container	9.625"	1	
Stage Tool										Centralizers			

Miscellaneous Materials													
Gelling Agt		Conc		Surfactant		Conc		Acid Type		Qty		Conc	%
Treatment Fld		Conc		Inhibitor		Conc		Sand Type		Size		Qty	
Fluid Data													
Stage/Plug #: 1													
Fluid #	Stage Type	Fluid Name			Qty	Qty uom	Mixing Density lbm/gal	Yield ft <sup>3</sup> /sk	Mix Fluid Gal/sk	Rate bbl/min	Total Mix Fluid Gal/sk		
1	Water Spacer				60	bbl	8.33	.0	.0	5			
2	Gel Water				20.00	bbl	.	.0	.0	6.5			
3	Water Spacer				20.00	bbl	.	.0	.0	6.5			
4	Lead Cement	VERSACEM (TM) SYSTEM (452010)			1050.0	sacks	12.3	2.33	12.62	6.5	12.62		
12.62 Gal		FRESH WATER											
5	Tail Cement	VERSACEM (TM) SYSTEM (452010)			160.0	sacks	12.8	2.07	10.67	6.5	10.67		
10.67 Gal		FRESH WATER											
6	Displacement				198.2	bbl	.	.0	.0	6.5			
Calculated Values		Pressures			Volumes								
Displacement	198.2	Shut In: Instant			Lost Returns	YES	Cement Slurry		494.7	Pad			
Top Of Cement		5 Min			Cement Returns	0	Actual Displacement		198.2	Treatment			
Frac Gradient		15 Min			Spacers	100	Load and Breakdown			Total Job	772.9		
Rates													
Circulating	N/A	Mixing		6.5	Displacement	6.5	Avg. Job		6.5				
Cement Left In Pipe	Amount	43.2 ft	Reason	Shoe Joint									
Frac Ring # 1 @	ID	Frac ring # 2 @	ID	Frac Ring # 3 @	ID	Frac Ring # 4 @	ID						
The Information Stated Herein Is Correct					Customer Representative Signature								

*The Road to Excellence Starts with Safety*

<b>Sold To #:</b> 344034		<b>Ship To #:</b> 2825559		<b>Quote #:</b>		<b>Sales Order #:</b> 7840233	
<b>Customer:</b> OXY GRAND JUNCTION EBUSINESS				<b>Customer Rep:</b> Silva, Marco			
<b>Well Name:</b> CC			<b>Well #:</b> 697-09-48A			<b>API/UWI #:</b> 05-045-18134	
<b>Field:</b> GRAND VALLEY		<b>City (SAP):</b> PARACHUTE		<b>County/Parish:</b> Garfield		<b>State:</b> Colorado	
<b>Legal Description:</b>							
<b>Lat:</b> N 39.535 deg. OR N 39 deg. 32 min. 6.191 secs.				<b>Long:</b> W 108.222 deg. OR W -109 deg. 46 min. 40.22 secs.			
<b>Contractor:</b> OXY			<b>Rig/Platform Name/Num:</b> WHITE MOUNTAIN 272				
<b>Job Purpose:</b> Cement Surface Casing						<b>Ticket Amount:</b>	
<b>Well Type:</b> Development Well			<b>Job Type:</b> Cement Surface Casing				
<b>Sales Person:</b> DUNNING, DUSTIN			<b>Srvc Supervisor:</b> ERIC CARTER			<b>MBU ID Emp #:</b> 345598	

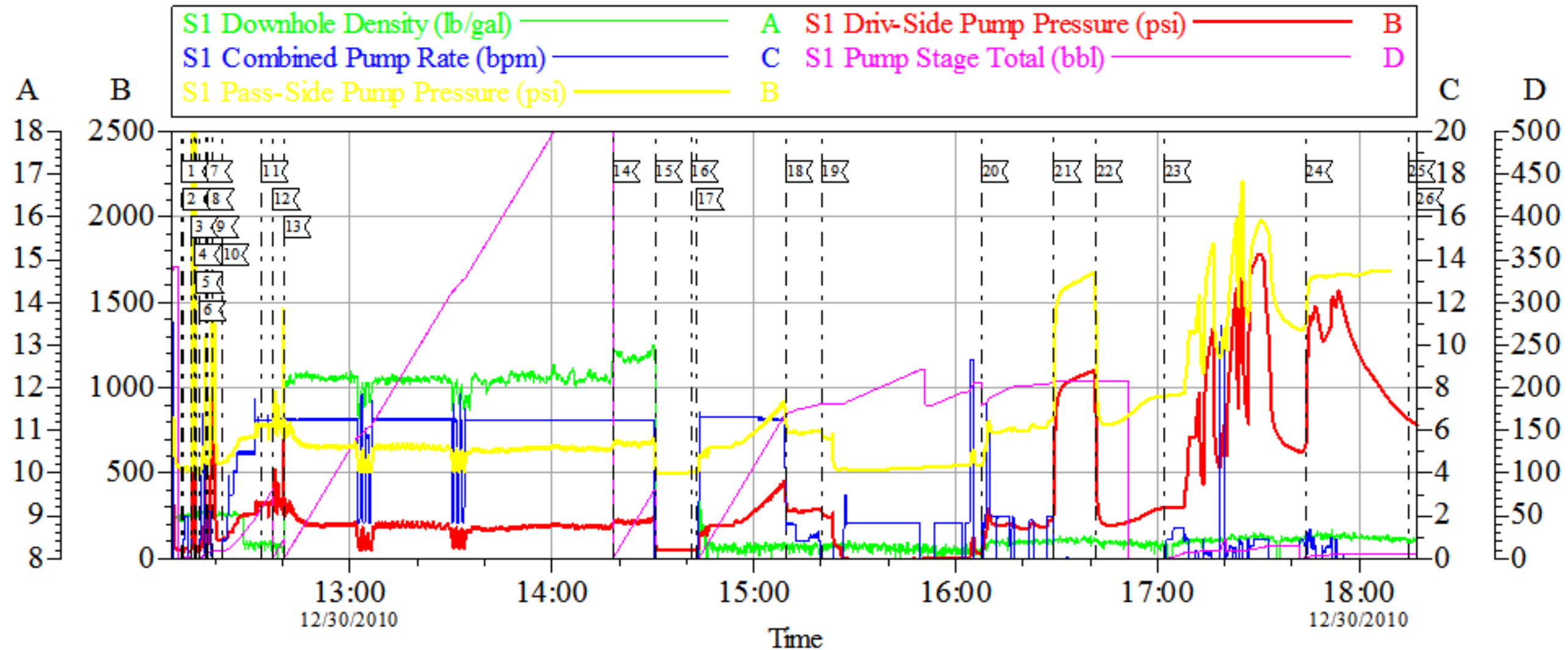
Activity Description	Date/Time	Cht #	Rate bbl/min	Volume bbl		Pressure psig		Comments
				Stage	Total	Tubing	Casing	
Arrive at Location from Other Job or Site	12/30/2010 01:00							RIG RUNNING CASING
Assessment Of Location Safety Meeting	12/30/2010 09:40							ATTENDED BY ALL HES CREW
Other	12/30/2010 09:50							SPOT EQUIPMENT
Pre-Rig Up Safety Meeting	12/30/2010 10:00							ATTENDED BY ALL HES CREW
Rig-Up Equipment	12/30/2010 10:30							
Pre-Job Safety Meeting	12/30/2010 11:30							ATTENDED BY ALL HES CREW, RIG CREW AND COMPANY REP
Start Job	12/30/2010 12:09							TP 2606.7', TD 2604', SJ 43.2', FC 2563.5', MW 8.6 PPG, CASING 9.625", 36#, J-55, HOLE 14.75", RIG COULD NOT CIRCULATE WELL
Prime Pumps	12/30/2010 12:10		1	2				
Test Lines	12/30/2010 12:12							PRESSURED UP TO 2200 PSI, PRESSURE HELD
Pump Spacer 1	12/30/2010 12:13		5	60			240.0	FRESH WATER, ADDED 40 BBLS AT COMPANY REP'S REQUEST
Comment	12/30/2010 12:14							SHUTDOWN DUE TO PRESSURE INCREASES
Pump Spacer 2	12/30/2010 12:33		6.5	20			320.0	LGC SPACER
Pump Spacer 1	12/30/2010 12:37		6.5	20			310.0	FRESH WATER

Activity Description	Date/Time	Cht #	Rate bbl/min	Volume bbl		Pressure psig		Comments
				Stage	Total	Tubing	Casing	
Pump Lead Cement	12/30/2010 12:40		6.5	435.7			200.0	1050 SKS MIXED AT 12.3 PPG, 2.33 YIELD, 12.62 GL/SK
Pump Tail Cement	12/30/2010 14:18		6.5	59			230.0	160 SKS MIXED AT 12.8 PPG, 2.07 YIELD, 10.67 GL/SK
Shutdown	12/30/2010 14:30							
Drop Top Plug	12/30/2010 14:41							PLUG LUANCHED
Pump Displacement	12/30/2010 14:42		6.5	188.2			440.0	FRESH WATER
Slow Rate	12/30/2010 15:09		2	10			300.0	
Comment	12/30/2010 15:20							DUE TO COLD TEMPERATURE HES COULD NOT PULL WATER FROM UPRIGHTS, WATER TRUCK WAS CALLED
Bump Plug	12/30/2010 16:29						780.0	PLUG LANDED
Check Floats	12/30/2010 16:41							FLOATS HELD
Other	12/30/2010 17:01		1.5	15		2440.0		PUMP THROUGH PARASITE
Other	12/30/2010 17:44						1550.0	TEST CASING, PRESSURE HELD, ELECTRONIC GAUGES WERE MALFUNCTIONING, HES USED MARTIN DECKER TO MONITOR PRESSURE
Release Casing Pressure	12/30/2010 18:14							
End Job	12/30/2010 18:16							NO CIRCULATION THROUGH OUT JOB, 0 BBLS CEMENT TO SURFACE, PIPE WAS NOT MOVED DURING JOB.
Post-Job Safety Meeting (Pre Rig-Down)	12/30/2010 18:20							ATTENDED BY ALL HES CREW
Rig-Down Equipment	12/30/2010 18:30							
Depart Location Safety Meeting	12/30/2010 20:00							ATTENDED BY ALL HES CREW

Activity Description	Date/Time	Cht #	Rate bbl/ min	Volume bbl		Pressure psig		Comments
				Stage	Total	Tubing	Casing	
Crew Leave Location	12/30/2010 20:10							THANK YOU FOR USING HALLIBURTON CEMENT, ERIC CARTER AND CREW.

# OXY

## 9.625" SURFACE/C.C. 697-09-48A



### Local Event Log

1 STARTJOB	12:09:57	2 FILL LINES	12:10:17	3 TESTLINES	12:12:42
4 PUMP H2O SPACER	12:13:33	5 SHUTDOWN	12:14:18	6 RESUME	12:15:07
7 SHUTDOWN	12:16:56	8 RESUME	12:17:23	9 SHUTDOWN	12:18:48
10 RESUME	12:21:51	11 PUMP LGC SPACER	12:33:39	12 PUMP H2O SPACER	12:37:00
13 PUMP LEAD CEMENT	12:40:21	14 PUMP TAIL CEMENT	14:18:01	15 SHUTDOWN	14:30:38
16 DROP TOP PLUG	14:41:17	17 PUMP H2O DISPLACEMENT	14:42:58	18 SLOWRATE	15:09:35
19 SHUTDOWN	15:20:07	20 RESUME	16:07:42	21 BUMP PLUG	16:29:13
22 CHECK FLOATS	16:41:35	23 PUMP ON PARASITE	17:01:55	24 TEST CASING	17:44:01
25 RELEASE PRESSURE	18:14:25	26 END JOB	18:16:57		

Customer: OXY GRAND JUNCTION EBUSINESS  
 Well Description: CC 697-09-48A  
 Company Rep: CODY LONG

Job Date: 30-Dec-2010  
 Job Type: 05-045-18134  
 Cement Supervisor: ERIC CARTER

Sales Order #: 7840233  
 ADC Used: YES  
 Elite #/Operator: 5/THOMAS PONDER

OptiCem v6.4.0  
 30-Dec-10 18:49