

# EOG RESOURCES, INC.

## CONSTRUCTION LAYOUT FOR

PETERSON RIDGE #01-20H

SECTION 20, T8N, R80W, 6th P.M.

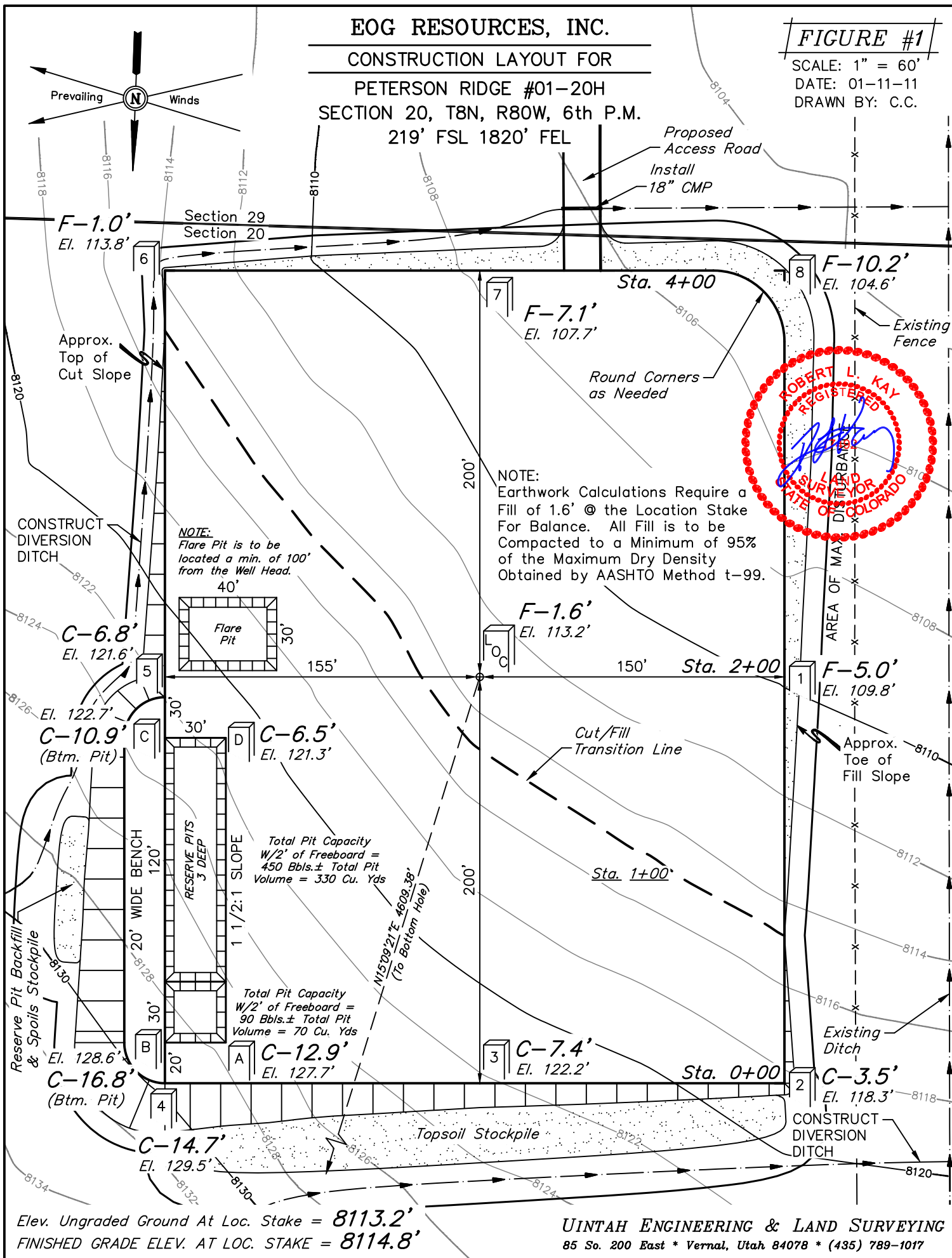
219' FSL 1820' FEL

FIGURE #1

SCALE: 1" = 60'

DATE: 01-11-11

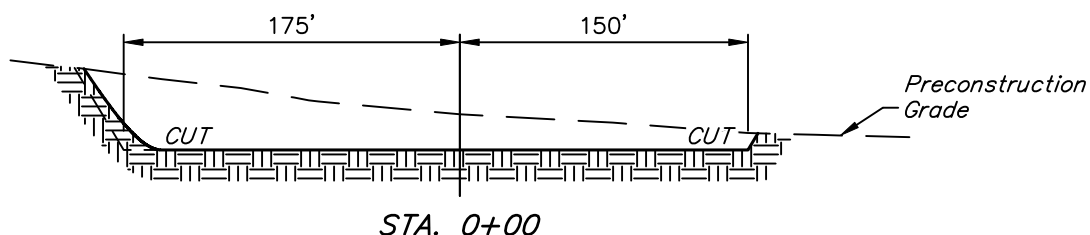
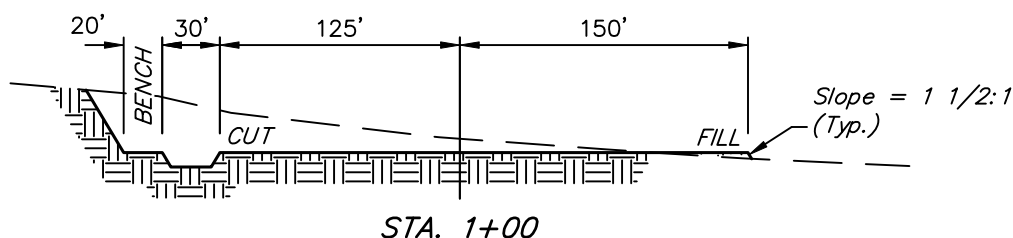
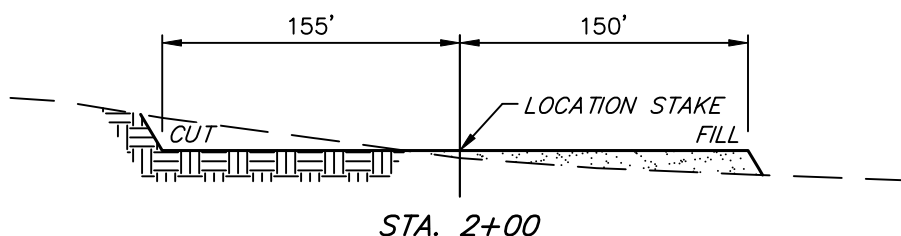
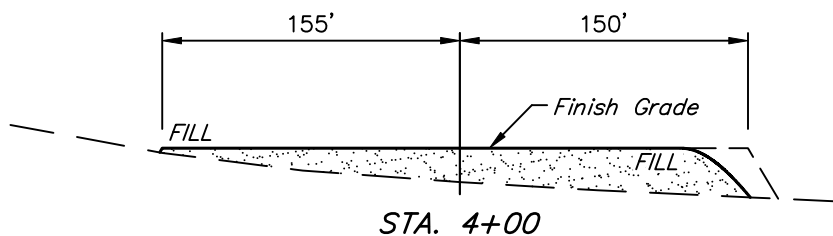
DRAWN BY: C.C.



1" = 40'  
 X-Section  
 Scale  
 1" = 100'  
 DATE: 01-11-11  
 DRAWN BY: C.C.

EOG RESOURCES, INC.  
 CONSTRUCTION LAYOUT CROSS SECTIONS FOR  
 PETERSON RIDGE #01-20H  
 SECTION 20, T8N, R80W, 6th P.M.  
 219' FSL 1820' FEL

FIGURE #2



APPROXIMATE ACREAGES  
 WELL SITE DISTURBANCE = ± 3.906 ACRES  
 ACCESS ROAD DISTURBANCE = ± 0.377 ACRES  
 TOTAL = ± 4.283 ACRES

\* NOTE:  
 FILL QUANTITY INCLUDES  
 5% FOR COMPACTION

APPROXIMATE YARDAGES

(6") Topsoil Stripping = 2,670 Cu. Yds.  
 Remaining Location = 12,920 Cu. Yds.  
 TOTAL CUT = 15,590 CU.YDS.  
 FILL = 12,720 CU.YDS.

EXCESS MATERIAL = 2,870 Cu. Yds.  
 Topsoil & Pit Backfill = 2,870 Cu. Yds.  
 (1/2 Pit Vol.)  
 EXCESS UNBALANCE = 0 Cu. Yds.  
 (After Interim Rehabilitation)

UINTAH ENGINEERING & LAND SURVEYING  
 85 So. 200 East \* Vernal, Utah 84078 \* (435) 789-1017

# EOG RESOURCES, INC.

## TYPICAL RIG LAYOUT FOR

PETERSON RIDGE #01-20H  
SECTION 20, T8N, R80W, 6th P.M.  
219' FSL 1820' FEL

FIGURE #3

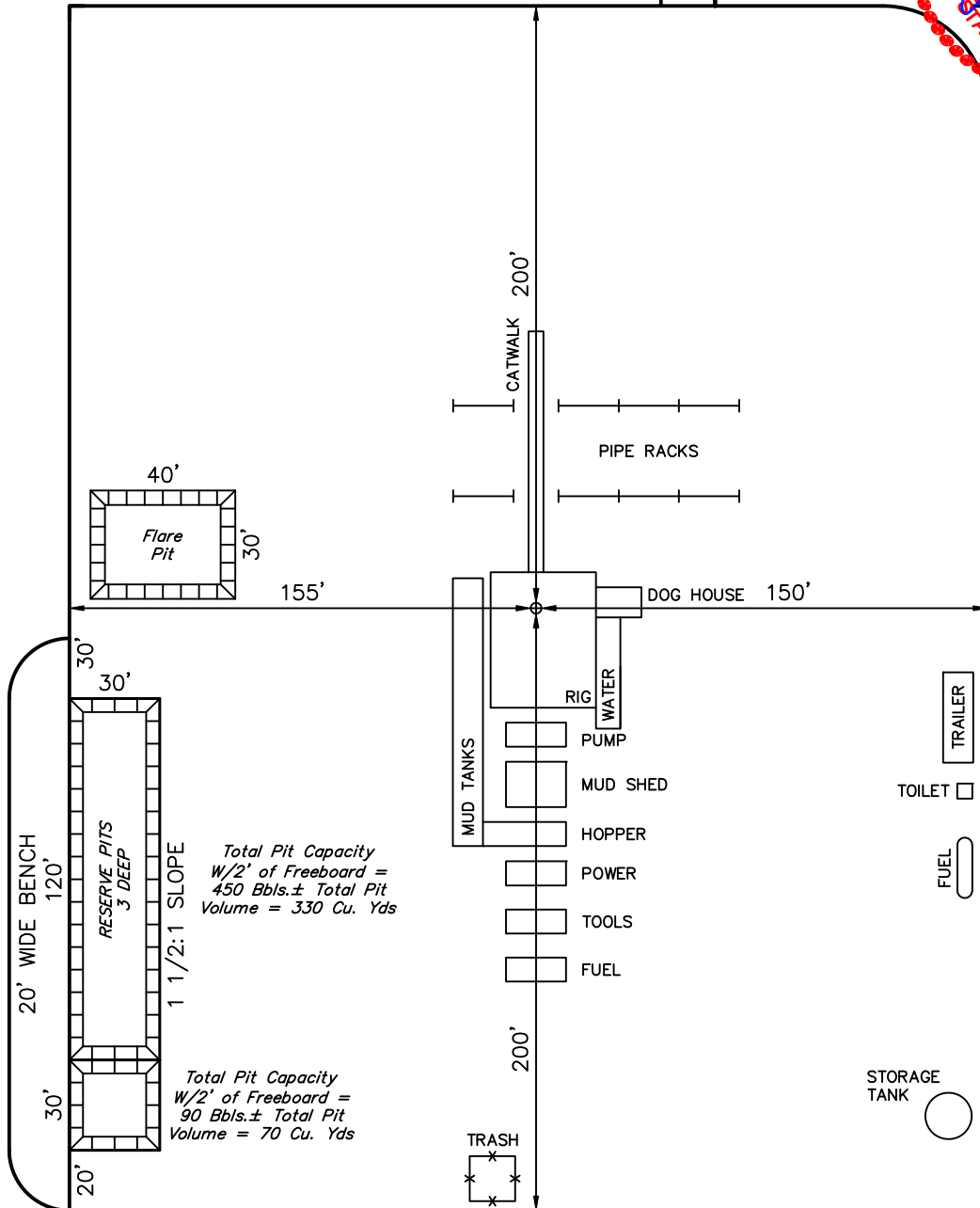
SCALE: 1" = 60'

DATE: 01-11-11

DRAWN BY: C.C.



Proposed  
Access Road





EOG RESOURCES, INC.  
RECLAMATION DIAGRAM FOR  
PETERSON RIDGE #01-20H  
SECTION 20, T8N, R80W, 6th P.M.  
219' FSL 1820' FEL

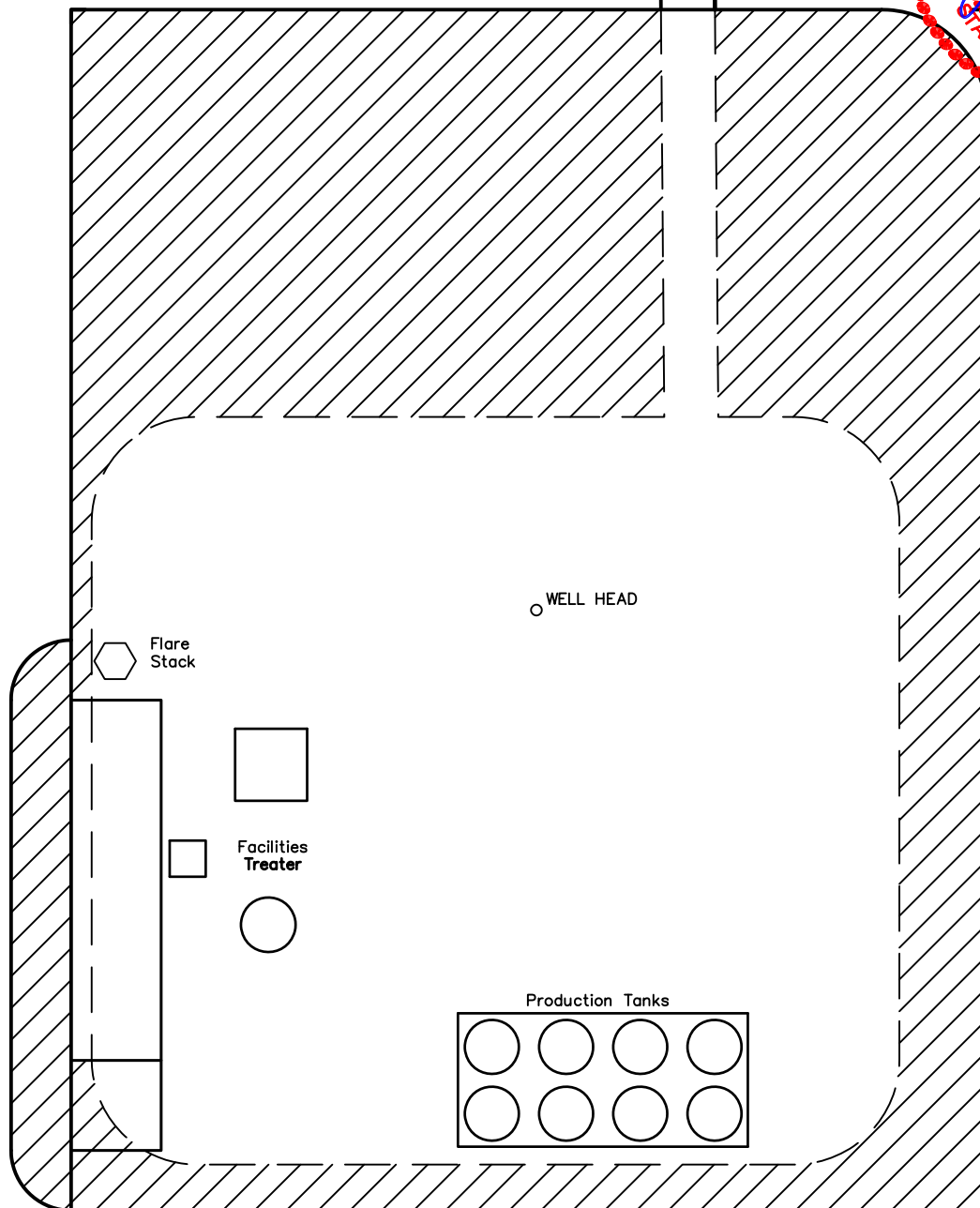
FIGURE #4

SCALE: 1" = 60'

DATE: 01-11-11

DRAWN BY: C.C.

Access Road



APPROXIMATE ACREAGES

UN-RECLAIMED =  $\pm 1.570$  ACRES



RECLAIMED AREA

# EOG RESOURCES, INC.

## LOCATION DRAWING FOR

PETERSON RIDGE #01-20H

20 - SECTION 20, T8N, R80W, 6th P.M.  
219' FSL 1820' FEL

FIGURE #5

DATE: 01-11-11  
DRAWN BY: C.C.

LINE TABLE			
LINE	BEARING	LENGTH	FEATURE
L1	S87°54'44"W	260.58'	State Highway 14
L2	S81°55'15"W	636.16'	Power Line
L3	S05°55'46"E	2693.10'	House



1938 Brass Cap,  
0.5' Tall Pile of  
Stones  
Lat: 40.651225°  
Long: 106.387956°



SCALE

SE 1/4

1/16 Section Line

1/4 Section Line

1/16 Section Line

Section Line  
N00°16'37"W - 2628.11' (Meas.)

B.L.M.  
LANDS

Highway #14

1938 Brass Cap,  
0.7' Tall Pile of  
Stones  
Lat: 40.643972°  
Long: 106.397419°

1938 Brass Cap,  
0.5' Tall Pile of  
Stones  
Lat: 40.644014°  
Long: 106.387911°

S89°41'W - 2614.26' (G.L.O.)

S89°39'52"W - 2639.88' (Meas.)

S63°07'12"W 25.55 Mi.  
(To Railroad)

Proposed  
Access Road

S06°18'59"E 2502.14'  
(To Water Well)  
S00°22'04"E 1525.33'  
(To Property Line)  
L3

### PLANT COMMUNITY

- ☐ DISTURBED GRASSLAND
- ☐ NATIVE GRASSLAND
- ☐ SHRUB LAND
- ☐ PLAINS RIPARIAN
- ☐ MOUNTAIN RIPARIAN
- ☐ FOREST LAND
- ☐ WETLANDS AQUATIC
- ☐ ALPINE
- ☐ OTHER (Describe): \_\_\_\_\_

### CURRENT LAND USE

- CROP LAND: ☐ IRRIGATED ☐ DRY LAND ☐ IMPROVED PASTURE ☐ HAY MEADOW ☐ CRP
- NON-CROP LAND: ☐ RANGELAND ☐ TIMBER ☐ RECREATIONAL ☐ OTHER (Describe) \_\_\_\_\_
- SUBDIVIDED: ☐ INDUSTRIAL ☐ COMMERCIAL ☐ RESIDENTIAL \_\_\_\_\_

### FUTURE LAND USE

- CROP LAND: ☐ IRRIGATED ☐ DRY LAND ☐ IMPROVED PASTURE ☐ HAY MEADOW ☐ CRP
- NON-CROP LAND: ☐ RANGELAND ☐ TIMBER ☐ RECREATIONAL ☐ OTHER (Describe) \_\_\_\_\_
- SUBDIVIDED: ☐ INDUSTRIAL ☐ COMMERCIAL ☐ RESIDENTIAL \_\_\_\_\_

UINTAH ENGINEERING & LAND SURVEYING

85 So. 200 East \* Vernal, Utah 84078 \* (435) 789-1017