

T10N, R57W, 6th P.M.

WHITTING OIL & GAS CORP.

1917 2 1/2" BLM  
Brass Cap, Fence  
Lat: 40.836147  
Long: 103.803839

N89°45'18"E  
5183.09' (Meas.)

1917 2 1/2" BLM  
Brass Cap,  
0.4 High,  
Lat: 40.846200  
Long: 103.785111

NOTE:  
THE PROPOSED BOTTOM HOLE FOR THIS WELL  
IS LOCATED IN THE NW 1/4 SE 1/4 OF SECTION  
7, T10N, R57W, 6th P.M. AT A DISTANCE OF  
1995' FSL 1945' FEL. IT BEARS N00°46'08"W  
6976.04' FROM THE PROPOSED WELL HEAD.

Lot 1

Lot 2

Lot 3

NOTE:  
SEE ADDENDUM TO LEGAL PLAT FOR  
EXISTING IMPROVEMENTS WITHIN 400'  
OF THE PROPOSED DISTURBANCE.

18

N00°46'08"W - 6976.04'  
(To Bottom Hole)

N00°42'39"W - 2657.16' (Meas.)

2011 UELS Alum. Cap.  
0.4' Below Ground  
Lat: 40.835908  
Long: 103.784997

R  
58  
57  
W  
R  
57  
W

Lot 4

HORSETAIL #18-0733H

Elev. Ungraded Ground = 4802'

N00°44'35"W - 2659.11' (Meas.)

2011 2 1/2" UELS  
Alum. Cap. RLS #17492  
Lat: 40.831603  
Long: 103.803653

2011 2 1/2" UELS  
Alum. Cap. Flush  
W/Ground RLS #17492  
Lot: 40.831606  
Long: 103.794478

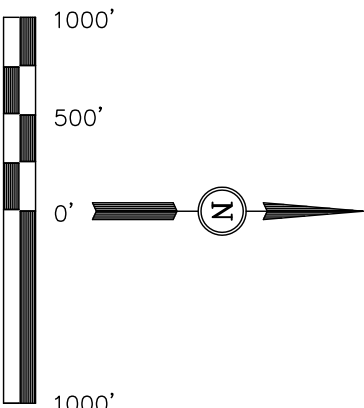
S89°55'14"W  
2657.22' (Meas.)

1917 BLM Brass  
Cap, 0.5' Above Ground  
Lat: 40.831611  
Long: 103.784878

SPOT ELEVATION LOCATED AT THE NORTHEAST CORNER OF  
SECTION 15, T9N, R58W, 6th P.M. TAKEN FROM THE RIVER  
BEND, QUADRANGLE, COLORADO, WELD COUNTY, 7.5 MINUTE  
QUAD (TOPOGRAPHIC MAP) PUBLISHED BY THE UNITED STATES  
DEPARTMENT OF THE INTERIOR, GEOLOGICAL SURVEY. SAID  
ELEVATION IS MARKED AS BEING 4679 FEET.

BASIS OF BEARINGS

BASIS OF BEARINGS IS A G.P.S. OBSERVATION.



CERTIFICATE

THIS IS TO CERTIFY THAT THE ABOVE PLAT WAS PREPARED FROM  
FIELD NOTES OF ACTUAL SURVEYS MADE BY ME OR UNDER MY  
SUPERVISION AND THAT THE SAME ARE TRUE AND CORRECT TO THE  
BEST OF MY KNOWLEDGE AND BELIEF.

REGISTERED LAND SURVEYOR  
REGISTRATION NO. 17492  
STATE OF COLORADO  
07-27-11

REVISED: 07-27-11

UINTAH ENGINEERING & LAND SURVEYING  
85 SOUTH 200 EAST - VERNAL, UTAH 84078  
(435) 789-1017

LEGEND:

└ = 90° SYMBOL

● = PROPOSED WELL HEAD.

▲ = SECTION CORNERS LOCATED.

PDOP=2.8

NAD 83 (SURFACE LOCATION)	
LATITUDE =	40°49'57.05" (40.832514)
LONGITUDE =	103°47'31.01" (103.791947)
NAD 27 (SURFACE LOCATION)	
LATITUDE =	40°49'57.10" (40.832528)
LONGITUDE =	103°47'29.20" (103.791444)

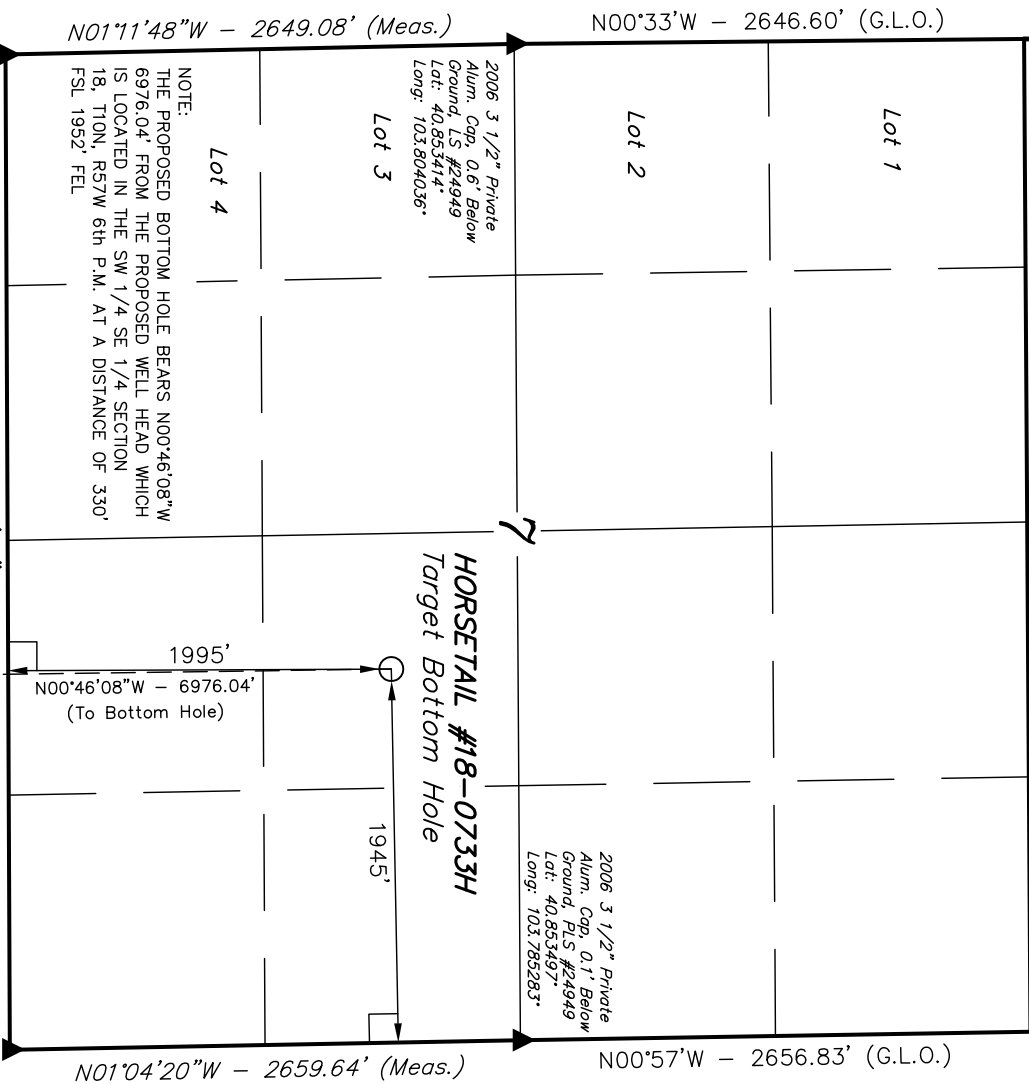
SCALE		DATE SURVEYED:	DATE DRAWN:
1" = 1000'		06-23-11	07-11-11
PARTY	REFERENCES		
J.H. C.M. Z.L.	G.L.O. PLAT		
WEATHER	FILE		
WARM	WHITTING OIL & GAS CORP.		

T10N, R57W, 6th P.M.

WHITTING OIL & GAS CORP.

R  
58  
W

S89°38'W - 5175.06' (G.L.O.)



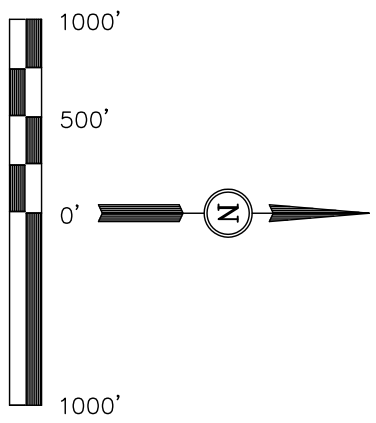
Well location, HORSETAIL #18-0733H, (BOTTOM HOLE) located as shown in the NW 1/4 SE 1/4 of Section 7, T10N, R57W, 6th P.M., Weld County, Colorado.

BASIS OF ELEVATION

SPOT ELEVATION LOCATED AT THE NORTHEAST CORNER OF SECTION 15, T9N, R58W, 6th P.M. TAKEN FROM THE RIVER BEND, QUADRANGLE, COLORADO, WELD COUNTY, 7.5 MINUTE QUAD (TOPOGRAPHIC MAP) PUBLISHED BY THE UNITED STATES DEPARTMENT OF THE INTERIOR, GEOLOGICAL SURVEY. SAID ELEVATION IS MARKED AS BEING 4679 FEET.

BASIS OF BEARINGS

BASIS OF BEARINGS IS A G.P.S. OBSERVATION.



THIS IS TO CERTIFY THAT THE ABOVE PLAT WAS PREPARED FROM FIELD NOTES OF ACTUAL SURVEYS MADE BY ME OR UNDER MY SUPERVISION AND THAT THE SAME ARE TRUE AND CORRECT TO THE BEST OF MY KNOWLEDGE AND BELIEF.

REVISED: 07-27-11

REGISTERED LAND SURVEYOR  
REGISTRATION NO. 1492  
STATE OF COLORADO  
07-27-11

UNTAN ENGINEERING & LAND SURVEYING  
85 SOUTH 200 EAST - VERNAL, UTAH 84078  
(435) 789-1017

SCALE	DATE SURVEYED:	DATE DRAWN:
1" = 1000'	06-23-11	07-11-11
PARTY	REFERENCES	FILE
J.H. C.M. Z.L.	G.L.O. PLAT	WHITTING OIL & GAS CORP.
WEATHER		
WARM		

LEGEND:

- = 90° SYMBOL
- = PROPOSED WELL HEAD.
- = SECTION CORNERS LOCATED.

1917 2 1/2" BLM  
Brass Cap, Fence  
Lat: 40.846147  
Long: 103.803839

N89°45'18"E  
5183.09' (Meas.)

1917 2 1/2" BLM  
Brass Cap,  
0.4 High  
Lat: 40.846200  
Long: 103.785117

NAD 83 (TARGET BOTTOM HOLE)
LATITUDE = 40°51'05.96" (40.851656)
LONGITUDE = 103°47'32.17" (103.792269)
NAD 27 (TARGET BOTTOM HOLE)
LATITUDE = 40°51'06.01" (40.851669)
LONGITUDE = 103°47'30.36" (103.791767)