

BURLINGTON RESOURCES OIL & GAS COMPANY LP

UTE MOUNTAIN UTE 111 - 1064' FNL, 2006' FEL

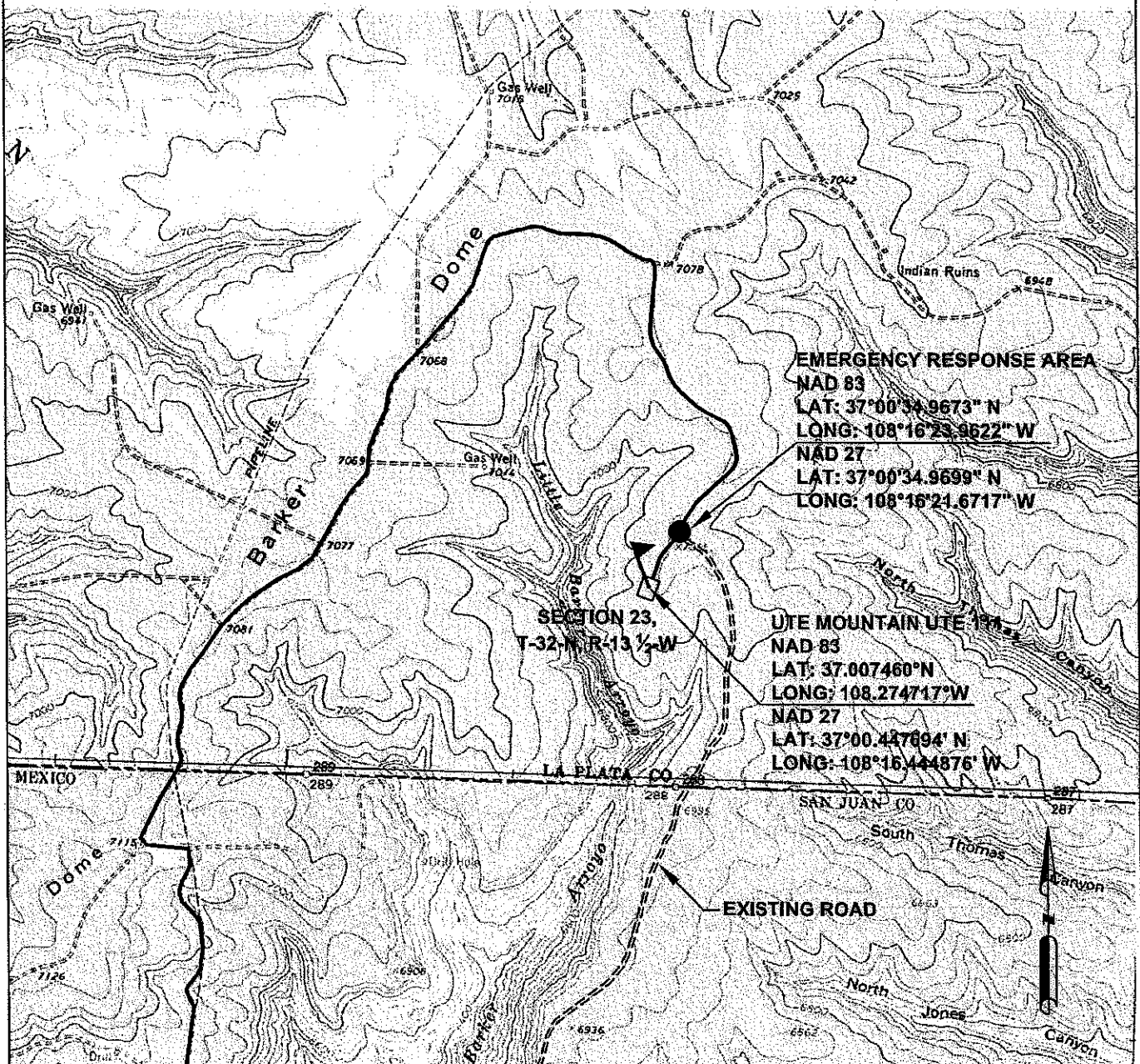
SECTION 23, T-32-N, R-13 1/2-W, N.M.P.M.,

LA PLATA COUNTY, COLORADO

ELEV.: 7039 NAVD88

NO NEW ACCESS

TOPOGRAPHY



NOTE:

REVISIONS			
NO.	DESCRIPTION	REVISED BY	DATE
1	ISSUED FOR REVIEW	TJR	4/20/11

CCI

P.O. BOX 328
BLOOMFIELD, NM, 87413
PHONE: (505) 325-7707

CHENAULT CONSULTING INC.