

# BURLINGTON RESOURCES OIL & GAS COMPANY LP

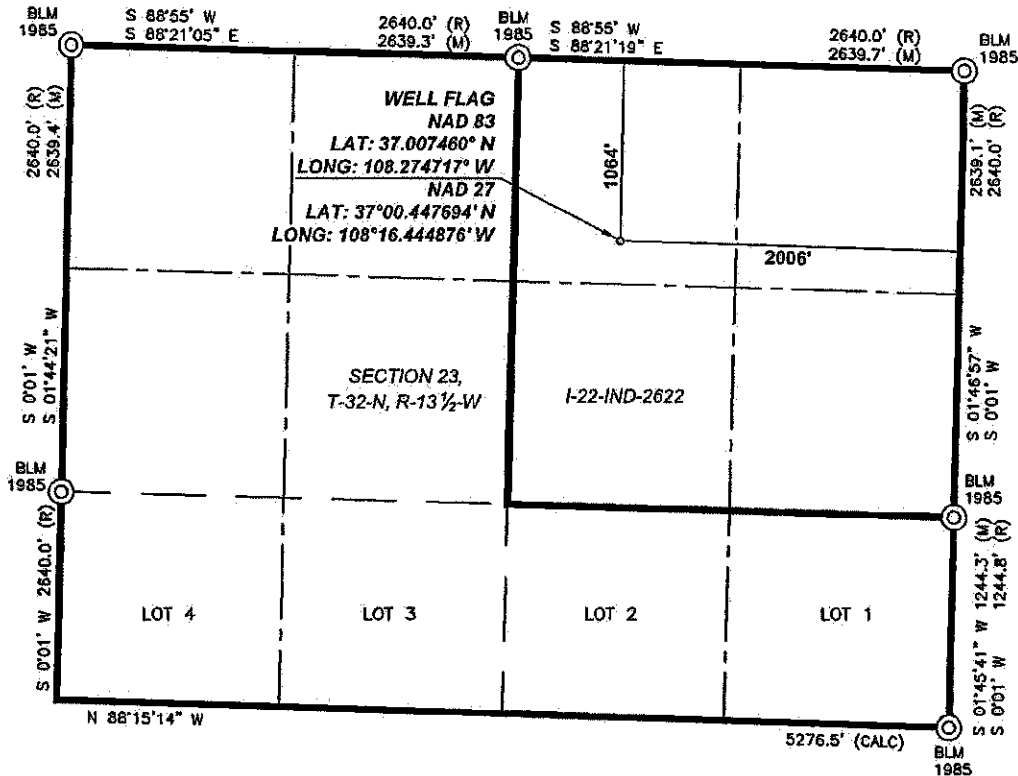
UTE MOUNTAIN UTE 111

1064' FNL, 2006' FEL

SECTION 23, T-32-N, R-13½-W, N.M.P.M.,

LA PLATA COUNTY, COLORADO

GROUND LEVEL ELEVATION: 7039



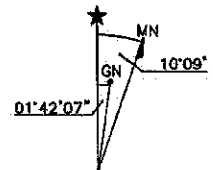
## NOTES:

1. BASIS OF BEARING IS GRID NORTH, COLORADO STATE PLANE COORDINATE SYSTEM, SOUTH ZONE, NAD83, DERIVED BY GPS OBSERVATION AND NGS/OPUS SOLUTION WITH ALL LINEWORK DEPICTED HEREIN RELATIVE THERETO.
2. BASIS OF ELEVATION IS 7039' AT THE WELL FLAG, NAVD83, DERIVED BY GPS OBSERVATION AND NGS/OPUS SOLUTION.
3. COMBINED FACTOR AT THE WELL FLAG IS 0.999715243
4. THE BLM DEPENDENT RESURVEY AND SURVEY OF T-32-N, R-13½-W, NMPM APPROVED APRIL 7, 1987 WAS RELIED UPON FOR RECORD INFORMATION.
5. FIELD SURVEYING COMMENCED APRIL 20, 2011.
6. GPS FIELD SURVEYING MEETS THE REQUIREMENTS OF RULE 215, ITEMS "A" THROUGH "H" AS SET FORTH IN THE AMENDED RULES AND REGULATIONS OF THE COLORADO OIL AND GAS CONSERVATION COMMISSION, EFFECTIVE MAY 1 2009.
7. SEE ORDER 515-1



HENRY P. BROADHURST, JR.  
COLORADO P.L.S. No. 18974

I, HENRY P. BROADHURST, JR., A DULY LICENSED LAND SURVEYOR IN THE STATE OF COLORADO, DO HEREBY CERTIFY THAT THE WELL LOCATION SHOWN ON THIS PLAT WAS PLOTTED FROM FIELD NOTES OF ACTUAL SURVEYS MADE BY ME OR UNDER MY SUPERVISION, AND THAT THE SAME IS TRUE AND CORRECT TO THE BEST OF MY BELIEF.



SCALE: 1" = 1000'

PREPARED FOR:  
**BURLINGTON RESOURCES  
OIL & GAS COMPANY LP**

**CCI**

**CHENAULT CONSULTING INC.**

PO BOX 328  
BLOOMFIELD, NM 87413  
(505) 325-7707

DRAWN BY: TJR, 5/05/2011 CHECKED BY: TRS, 5/10/2011 FILE NO. 3213.5W-U111-01