

# BURLINGTON RESOURCES OIL & GAS COMPANY LP

UTE MOUNTAIN UTE 111

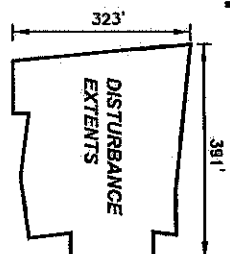
1064' FNL, 2006' FEL

SECTION 23, T-32-N, R-13 1/2-W, N.M.P.M., LA PLATA COUNTY, COLORADO

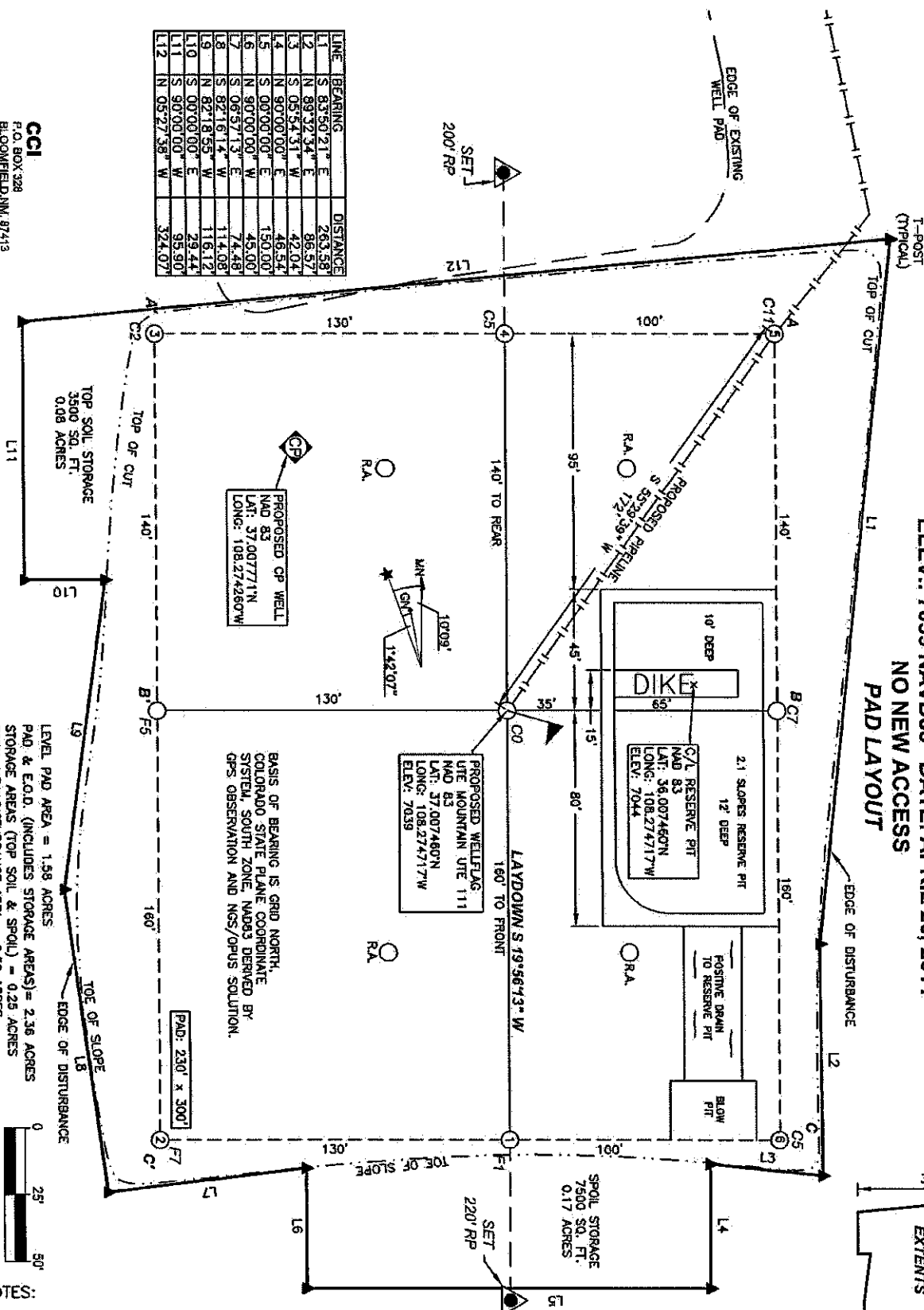
ELEV.: 7039 NAVD88 DATE: APRIL 20, 2011

NO NEW ACCESS

PAD LAYOUT



LINE	BEARING	DISTANCE
L1	S 83°50'21" E	263.58'
L2	N 89°32'34" E	86.57'
L3	S 05°54'31" W	42.04'
L4	N 90°00'00" E	46.94'
L5	S 00°00'00" E	150.00'
L6	N 90°00'00" W	45.00'
L7	S 06°57'13" E	74.48'
L8	S 82°16'14" W	114.08'
L9	N 82°18'55" W	116.12'
L10	S 00°00'00" E	29.44'
L11	S 90°00'00" W	95.90'
L12	N 05°27'38" W	324.07'



PROPOSED CP WELL  
NAD 83  
LAT: 37.007771°N  
LONG: 108.274260°W

PROPOSED WELFLAG  
UTE MOUNTAIN UTE 111  
NAD 83  
LAT: 37.007746°N  
LONG: 108.274217°W  
ELEV: 7039

PAD: 230' x 300'

LEVEL PAD AREA = 1.38 ACRES  
PAD & E.O.D. (INCLUDES STORAGE AREAS) = 2.36 ACRES  
STORAGE AREAS (TOP SOIL & SPOIL) = 0.28 ACRES  
TOTAL NEW DISTURBANCE AREA = 2.36 ACRES  
▲ = SET T-POST

## NOTES:

1. RESERVE PIT DIKE TO BE 8' ABOVE DEEP SIDE (OVERFLOW-3' WIDE AND 1' ABOVE SHALLOW SIDE).
2. THE TO OF SLOPE AND TOP OF CUT DEPICTED HEREIN ARE PROJECTED.
3. C.C.I. SURVEYS IS NOT LIABLE FOR UNDERGROUND UTILITIES OR PIPELINES. CONTRACTOR SHOULD CALL ONE-CALL FOR LOCATION OF ANY MARKED OR UNMARKED BURIED PIPELINES OR CABLES ON WELL PAD AND OR ACCESS ROAD AT LEAST TWO (2) WORKING DAYS PRIOR TO CONSTRUCTION.

**CCI**  
P.O. BOX 328  
BLOOMFIELD, NM, 87413  
PHONE: (505) 255-7107  
**CHEMULUT CONSULTING INC.**

# BURLINGTON RESOURCES OIL & GAS COMPANY LP

1064' FNL, 2006' FEL

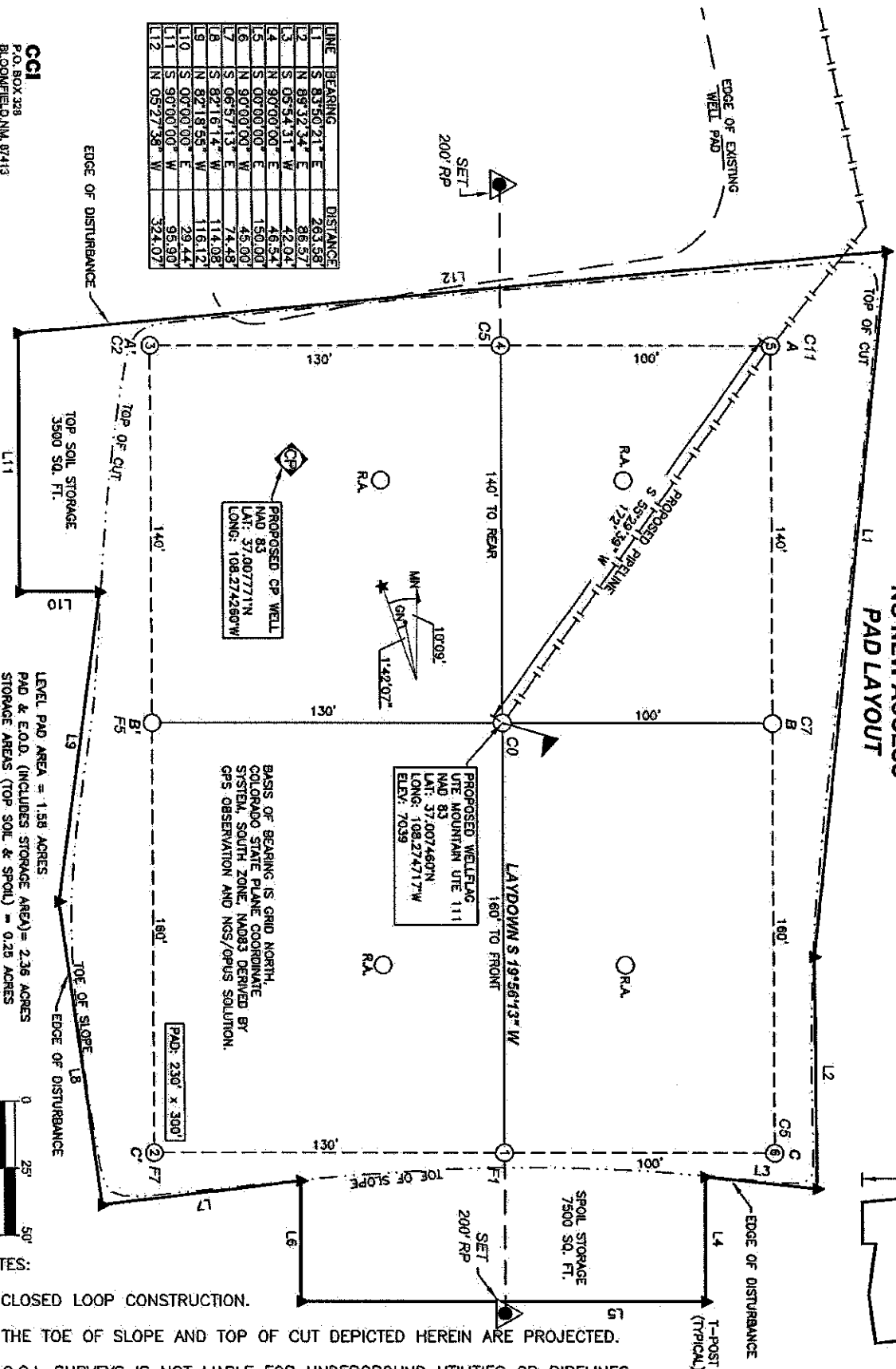
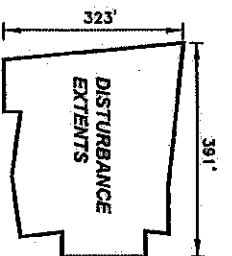
UTE MOUNTAIN UTE 111

SECTION 23, T-32-N, R-13 1/2-W, N.M.P.M., LA PLATA COUNTY, COLORADO

ELEV.: 7039 NAVD88 DATE: APRIL 20, 2011

NO NEW ACCESS

PAD LAYOUT



LINE	BEARING	DISTANCE
L1	S 85°50'21\"	263.58'
L2	N 89°32'34\"	86.57'
L3	S 05°54'31\"	42.04'
L4	N 90°00'00\"	46.54'
L5	S 00°00'00\"	150.00'
L6	N 90°00'00\"	45.00'
L7	S 06°57'13\"	74.48'
L8	S 82°16'14\"	114.08'
L9	N 82°18'55\"	116.12'
L10	S 00°00'00\"	29.44'
L11	S 90°00'00\"	95.90'
L12	N 05°27'38\"	324.07'

LEVEL PAD AREA = 1.58 ACRES.  
PAD & E.O.D. (INCLUDES STORAGE AREA) = 2.36 ACRES  
STORAGE AREAS (TOP SOIL & SPOIL) = 0.23 ACRES  
TOTAL NEW DISTURBANCE AREA = 2.36 ACRES



NOTES:

1. CLOSED LOOP CONSTRUCTION.
2. THE TOE OF SLOPE AND TOP OF CUT DEPICTED HEREIN ARE PROJECTED.
3. C.C.I. SURVEYS IS NOT LIABLE FOR UNDERGROUND UTILITIES OR PIPELINES. CONTRACTOR SHOULD CALL ONE-CALL FOR LOCATION OF ANY MARKED OR UNMARKED BURIED PIPELINES OR CABLES ON WELL PAD AND OR ACCESS ROAD AT LEAST TWO (2) WORKING DAYS PRIOR TO CONSTRUCTION.