



eog resources

600 Seventeenth Street
Suite 1000N
Denver, CO 80202
(303) 572-9000

Scale 1:240 (5"=100') Imperial
Measured Depth Log

Well Name: Elsie #7-34H
Location: Hereford Ranch Prospect - SE/SE Sec 34 T12N R63W Weld County, Colorado
License Number: API: 05-123-30749
Spud Date: September 9, 2010
Drilling Completed: September 29, 2010
Surface Coordinates: 400' FSL, 400' FEL SE/SE Section 34 T12N R63W
Latitude 40.959778 Longitude 104.410972
Bottom Hole Coordinates: 600' FNL & 1100' FWL Section 34 T12N R63W
Latitude 40.971489 Longitude 104.426553
Ground Elevation (ft): 5373' K.B. Elevation (ft): 5395'
Logged Interval (ft): 1456' To: 13,030' MDTotal Depth (ft): 13,030' MD, 74
Formation: Niobrara 'B' Chalk
Type of Drilling Fluid: Water
Printed by WellSight Log Viewer from WellSight Systems 1-800-447-1534 www.WellSight.com

OPERATOR

Company: EOG Resources, Inc.
Address: 600 Seventeenth Street, Suite 1000N
Denver, Colorado, 80202
Company Geologist: John Melby

GEOLOGIST

Name: Mike Dodge, Robert Nordeck
Company: Goolsby Brothers & Assoc. (GBA), Inc. (www.goolsbybrothers.com)
Address: 575 Union Blvd., Suite 208
Lakewood CO. 80228

E-Logs

MWD GR from Surface Casing to TD.

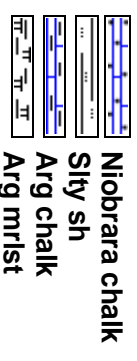
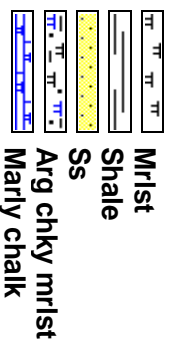
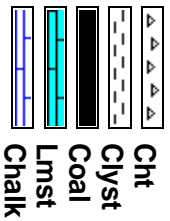
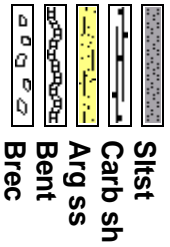
Casing

9 5/8" 36# J55 STC set @ 1456'.
7" 23# HC-P110 LTC set @ 7675'.
4.5" 11.6# P110 LTC Liner to TD.

Comments

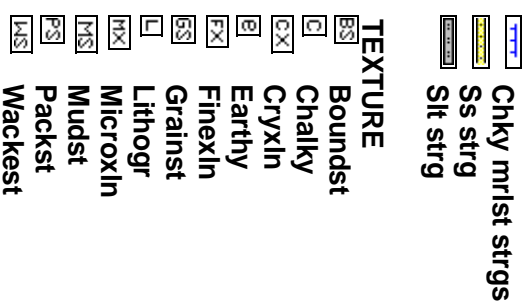
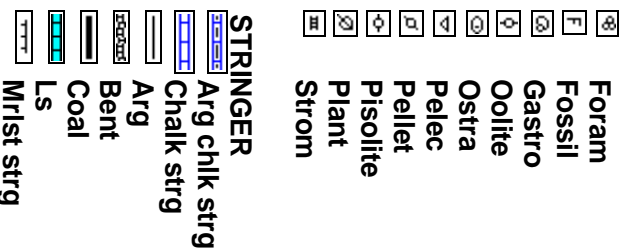
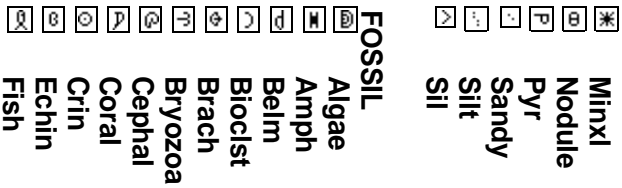
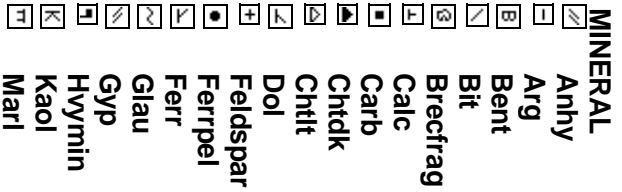
*This well was spudded @ 14:30 on 9/9/10. A 13 1/2" Hole was drilled to 1456', and 9 5/8" S.C. was set. The well was Drilled Vertically to KOP of 6938', at which point angle was built to 88° by 7687'. 7" Casing was set and the well was then Drilled Horizontally to a TD of 13,030' MD. A Vertical Strip Log covers the Interval from S.C. to 7" Intermediate Casing. This Horizontal Strip Log was made covering the interval from 6938' (KOP) to TD.

- 1) Drilling Contractor: DHS Drilling Co., Rig #8
Tool Pusher: Scott Putnam, Robert Roman, Terry Flores, Dwayne Pitt.
Pumps: #1 & #2 PZ-9 5.5" x 9" (.0628 bbl/stk)
- 2) Company Men: Tim Storey, Bill Laird.
- 3) Directional Services / MWD GR: Nevis Energy Services: Ken Jones, Mike Bryant, Brian Heath, Jack Miller.
- 4) Mud Company: Baker Hughes Drilling Fluids
Mud Engineer: Blake Mihalic, Michael Proust.
Solids Control: National Oilwell Varco / Brandt's Solids Control.
- 5) Contained/Under Balanced Drilling System: Weatherford.
- 6) Gas Detection Equipment: Mudlogging Systems Inc.
by Terra Services
Redbox TGC (Total Gas/Chromatograph).
#ML-085 6938-7687'
#ML-073 7687' to TD.



ROCK TYPES

ACCESSORIES



POROSITY
 E Earthy
 B Fenest
 F Fracture
 I Inter
 M Moldic
 O Organic
 P Pinpoint
 V Vuggy

SORTING
 M Well
 N Moderate
 P Poor

ROUNDING
 R Rounded
 S Subrnd
 A Subang
 Angular

OIL SHOW
 ● Even
 ○ Spotty
 ◐ Patchy
 ◑ Ques
 ◒ Dead
 ◓ Very spotty

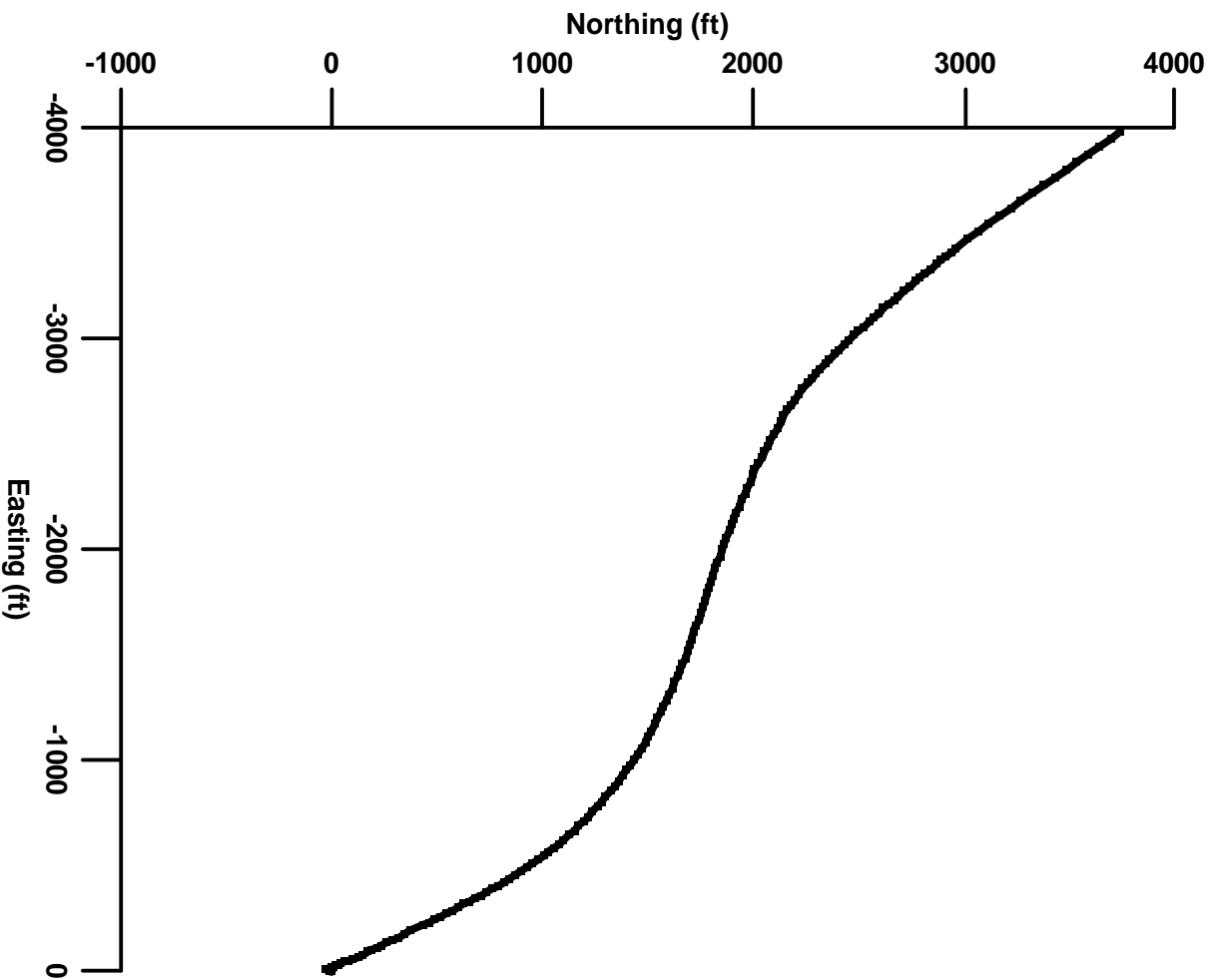
INTERVAL
 ■ Core

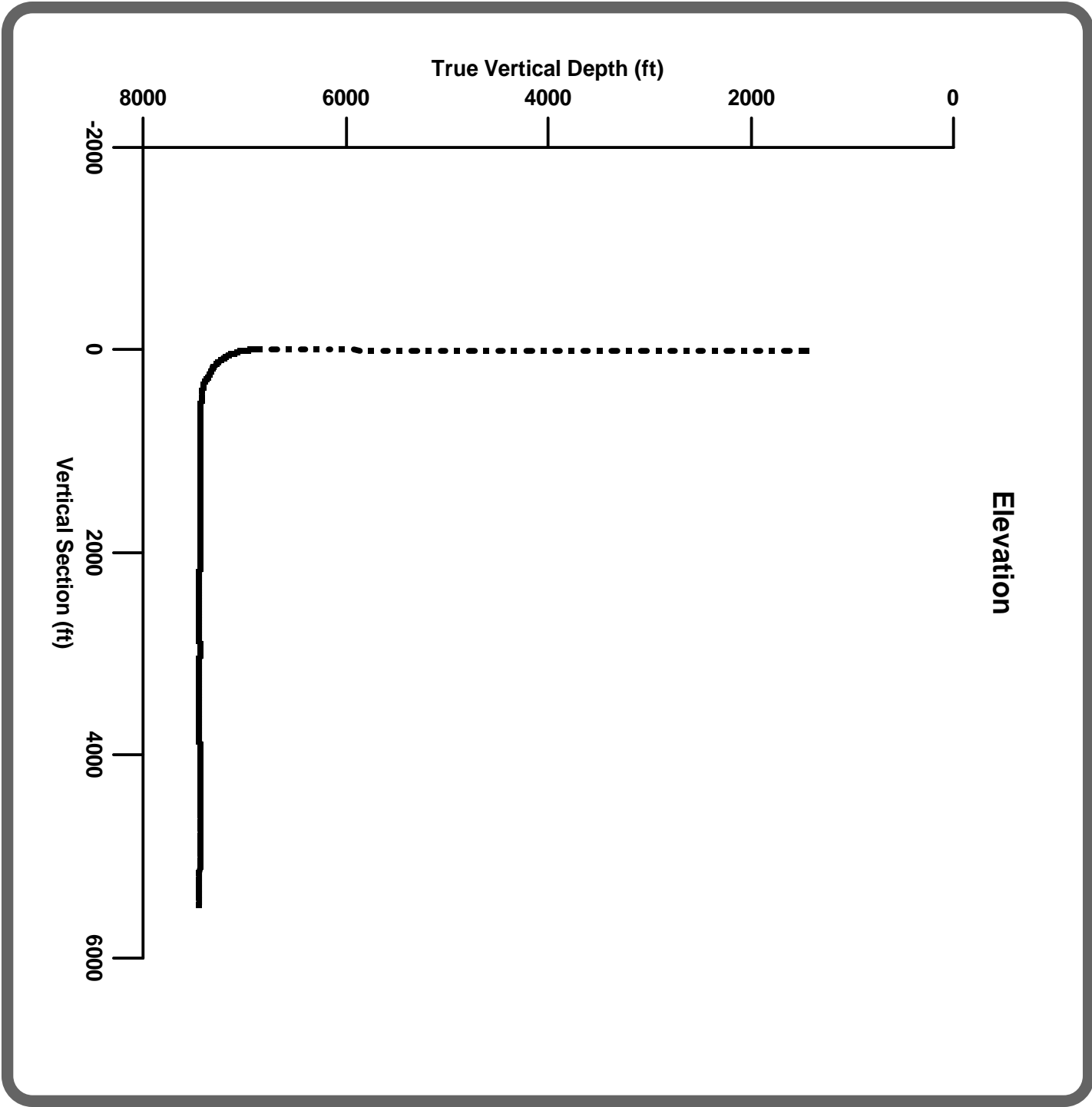
OTHER SYMBOLS

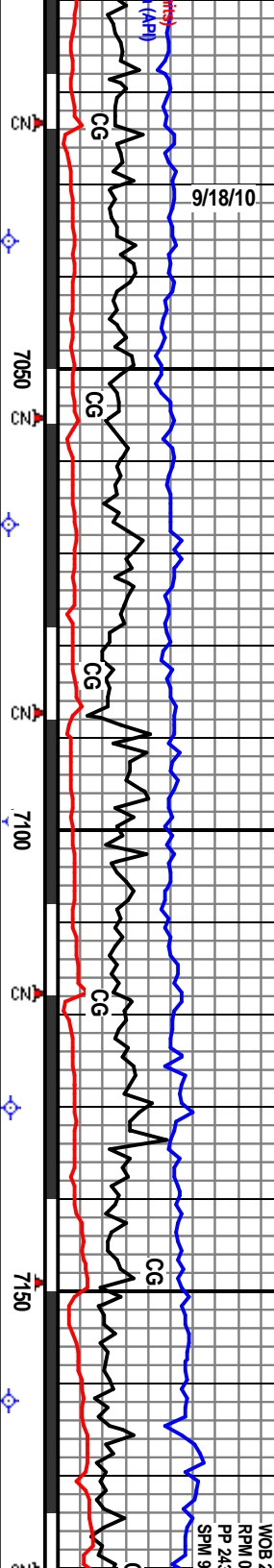
□ Dst

EVENT
 ▲ Conn
 ◆ Survey (mwd)
 ▼ Off bottom
 ▲ New bit
 ▲ Casing shoe
 ▲ Trip point

Plan







MD	Incl	Az	TVD	Description
7036'	MD Incl	13.8° Az	332.4' TVD	7034.67'
7067'	MD Incl	17.3° Az	333.4' TVD	7064.53' VS
7099'	MD Incl	20.4° Az	336.7' TVD	7094.81'
7100'	TVD			
7130'	MD Incl	23.5° Az	338.9' TVD	7123.56'
7162'	MD Incl	27.3° Az	340.4' TVD	7152.46'

Scale Change
7200

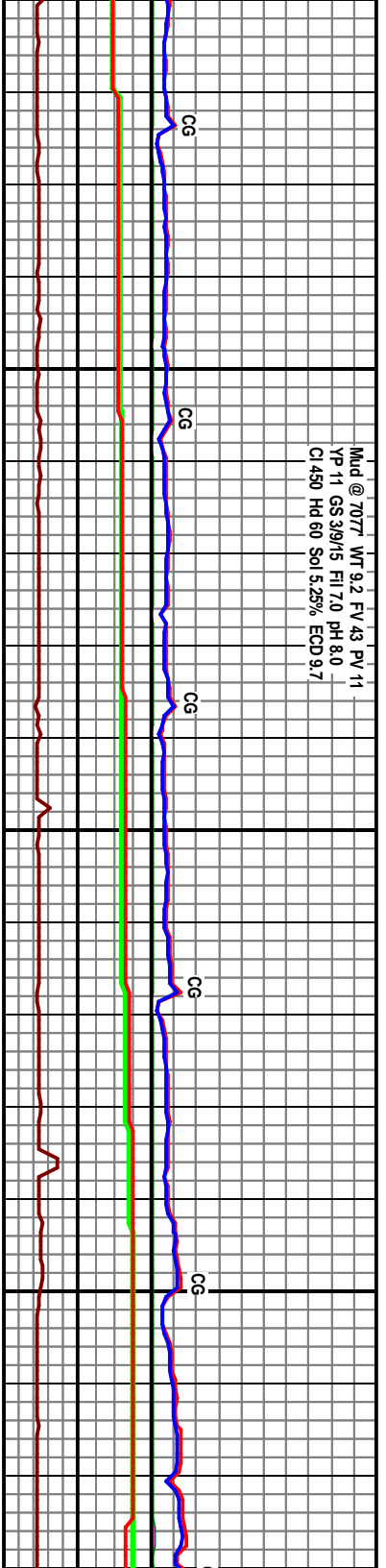
SH (85%) m-dk gy, ssply-sply, silty-thy-sm, sl-tr-mod calc, scat mica & mic carb matr, occ pint remn, occ Slit & vf gr Ss strgs, frm.
SLTST (15%) m-lk gy, s&p, frm, sdy grd-g-sily vf gr Ss, calc-sil calc, arg, clay fld, svcat mica & blk mmf/carb gns, occ Sh pgs, NSOFC.

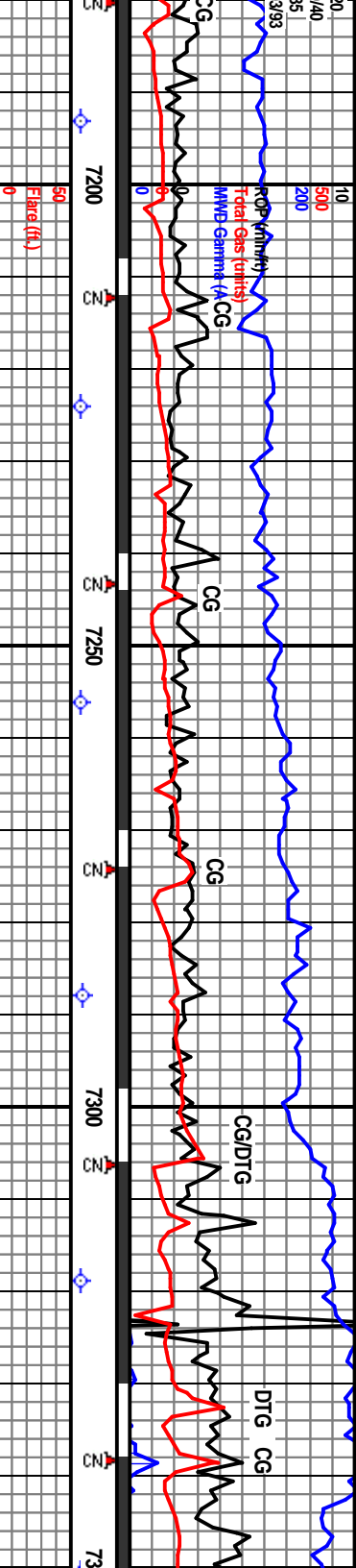
SH (90%) dk-m gy, ssply-ply-sply, silty-sm txt, sbchly lp, tr-si-non calc, mic mica, occ scat mic carb matr / tr pint remn, tr-occ Slit & silty arg vf gr Ss strgs, frm.
SLTST/SS (10%) as above, tr glau/gn clay mmf's.

SH (90%) dk-m gy, ssply-ply-sply, silty-sm txt, sbchly lp, tr-si-non calc, mic mica, occ scat mic carb matr / tr pint remn, tr-occ Slit & silty arg vf gr Ss strgs, frm.
SLTST/SS (10%) as above, tr glau/gn clay mmf's.

% m brn gy, frm, sb ply-sply, fss, dk min spks, sl calc, gen silty gddg: (20%) m brngy-glybrn, frm, blk, rhy, min/kr frag gns & musc mica, thin crco varved, abnt sdy micro lams, l vg & argil, dns/it, sl-mod calc.

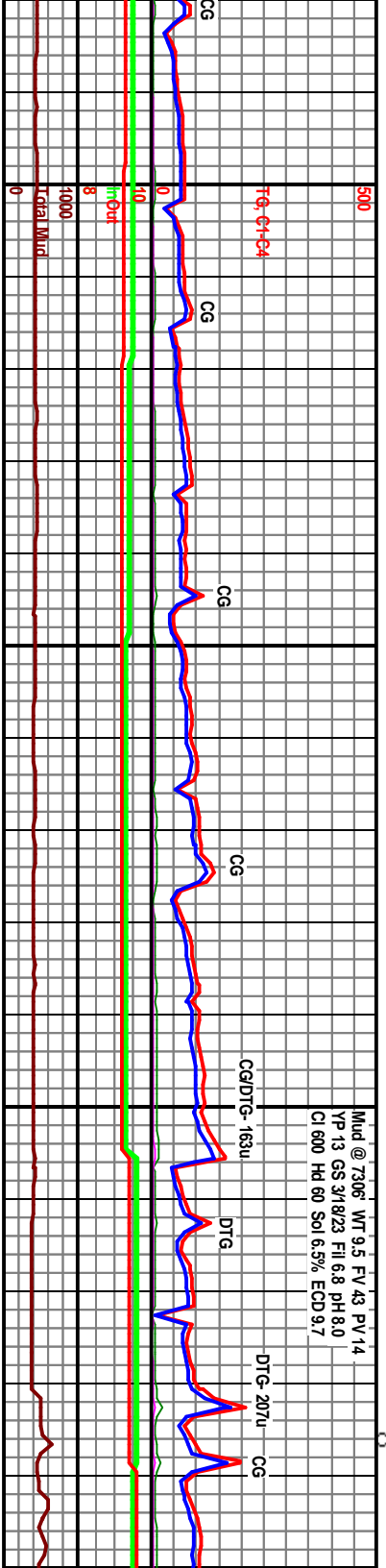
Mud @ 7077' WT 9.2 FV 43 PV 11
YP 11 GS 39/15 FI 7.0 pH 8.0
CI 450 Hd 60 Sol 5.25% ECD 9.7



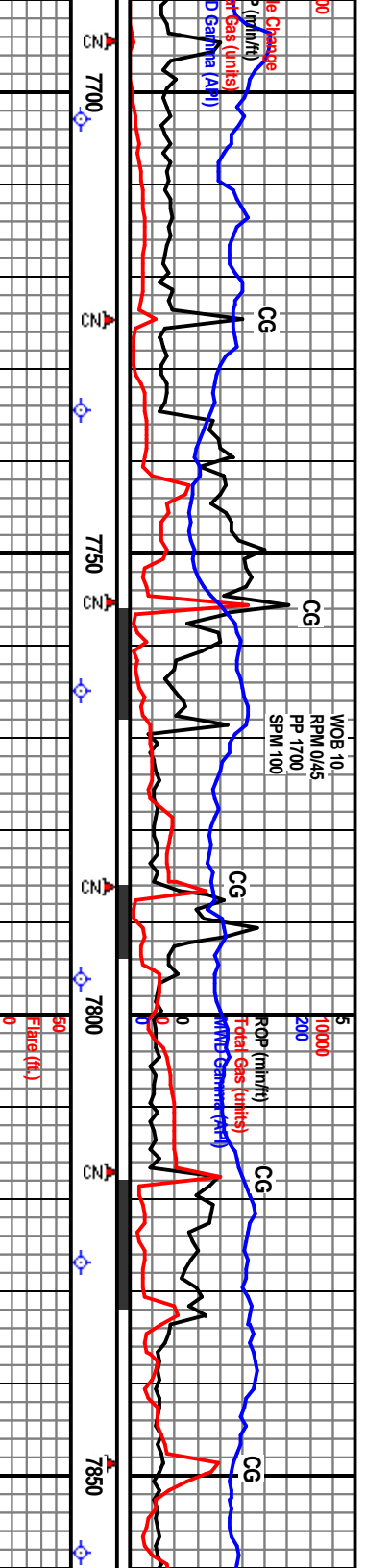


7193' MD Incl 31.4° Az 340.4° TVD 7179.48'	7224' MD Incl 36.1° Az 339.6° TVD 7205.25'	7256' MD Incl 40.7° Az 338.6° TVD 7230.32' VS 92.45'	7288' MD Incl 45.2° Az 336.7° TVD 7253.73'	7319' MD Incl 48.9° Az 335.3° TVD 7274.85'	7351' 51.9° Az 334.6° TVD 7295.85' 156.88'
SH (90%) md-k gy, gybrn, sply-sply-pty-sbbly, sly-rthy, tr sm, sbbly lp, non-tr calc, mic mica lp, occ scat mic carb mat & mic Pyr, occ Sil strgs, r sily vt gr Ss strgs, frm. SLTST (10%) m-t gy, fr-frm, sl calc, arg, cly fld, scat mica & blk mmf/carb grs, occ Sh ptgs.	SH (90%) as before, pred sply-pty-sply, non-tr-sil calc, mic mica, occ mic Pyr. SLTST (10%) pred strgs / Sh ptgs.	SH (90%) dk-m gy, gybrn, sply-sply, sbbly sl sily txt, rthy lp, tr-si-non calc, mic mica, occ mic carb mat, tr pint remn, r dism & mic Pyr, frm. SLTST (10%) m-ty s&p, calc lp, sdy lp, tr gybrn marly.	SH (90%) dk-m gy, tr gybrn, sply-sbbly-pty, sbbly sl sily txt, rthy lp, tr-si-non calc, mic mica, occ mic carb mat & pint remn, r dism & mic Pyr, frm. SLTST (10%) m-ty s&p, frm, sdy lp, calc lp, tr gybrn brn sbbly & marly.	SH (100%) m gybrn-brn gy, frm, sb pty, lp sply/fiss, sily w/sily txt, few acces mins, tr vt dism pyr, sl-rn calc. Tr gds Silst. SH (20%) v dk gy, frm-hd, sply/fiss, tr sl sily, tr blk carb spks, non-v sl calc. (Sharon Springs lth).	SH (70%) v dk gy, frm sply/fiss sl sily txt, tr spks & vt dism pyr, nc calc. SH (30%) gybrn-brn gy, frm, sb sply/fiss, sily w/sily tr acces mins, tr vt dism calc, Tr Bent v lt pl gy pyr & mica inclusions, brt fluor.

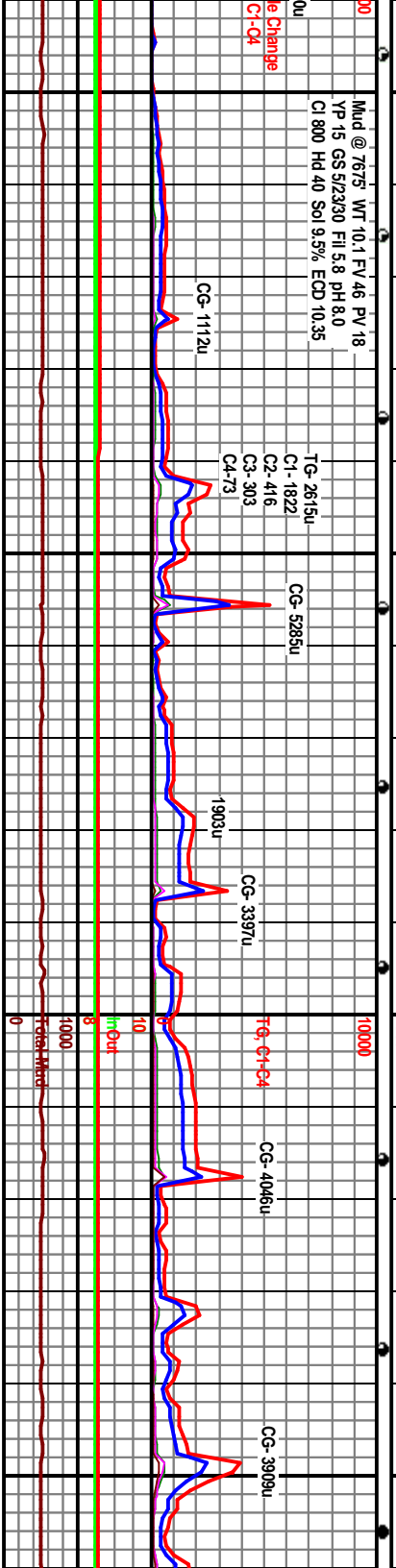
**Sharon Springs - 7308' MD,
7268' TVD (-1873)**



Mud @ 7306' WT 9.5 FV 43 PV 14
YP 13 GS 3/1823 Fil 6.8 pH 8.0
Cl 600 Hd 60 Sol 6.5% ECD 9.7



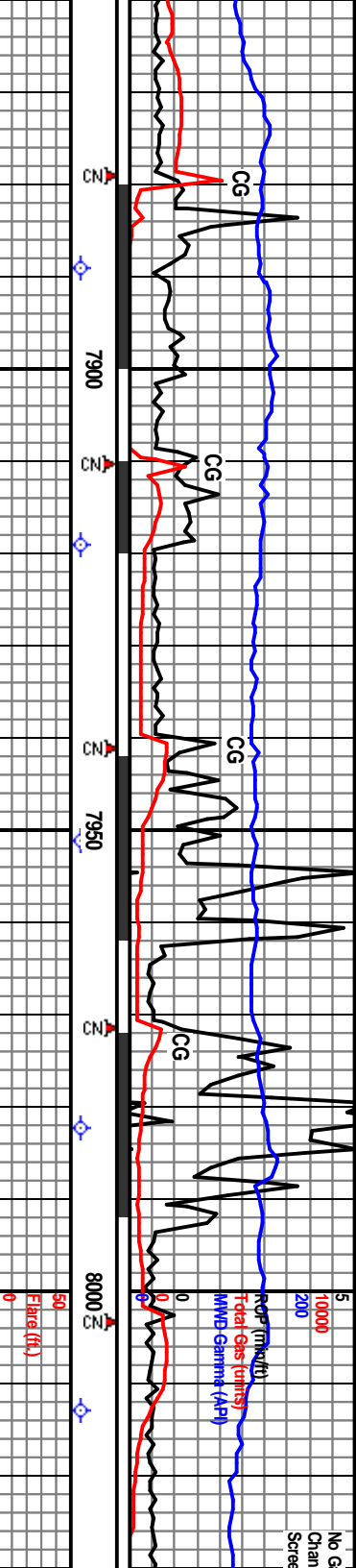
7703' MD Incl 85.5° Az 334.1° TVD 7422.87'	7734' MD Incl 85.6° Az 333.6° TVD 7425.28' VS 489.26'	7765' MD Incl 86.2° Az 334.4° TVD 7427.49'	7796' MD Incl 86.9° Az 333.8° TVD 7429.36' VS 547.66'	7300' TVD	7827' MD Incl 87.6° Az 333.2° TVD 7430.85'	7858' MD Incl 88.8° Az 332.2° TVD 7432.66' VS 606.66'
ARG MARLY CHK (80%) mot brn gylom m-h-dkgy. frm. blk-y-splly, rhy-grny, tr mod-v chly grny-mc sucr, occ lgy wh tan chly incl, tr xin Calc fld mic frac, tr carb Sh pigs, no vis stn, sply frt-mod yelgid flr, fast strng yelwh cut, hvy resd ring. SH (10%), CMT (10%).	ARG CHK (70%) m-lgy, gybn, mot ip, frm, blk-y-splly, rhy-grny, 20-40% clay mtx, fr-occ lse xin Calc, tr Calc fld frags, sl marly ip, sl carb ip, occ carb Sh pigs, no odor or vis stn, sply-patchy frt-mod yelgid flr, fast-strng strng yelwh cut, hvy brt yel resd ring. SH (20%) blk, v dkgy, frm-brt, splly-splly-frag, grny ip, NSOF, slow-fast strng cus. CMT (10%).	ARG CHK (80%) m-h-dk gy, gybn, mot, brt, bly, rhy-grny, 10-40% clay mtx, marly ip, occ carb Sh pigs, tr xin Calc, tr oil skin on Shpls, fr petro odor, no vis stn, patchy yel flr, slow-fast strng yelwh cut, mod-hvy resd ring. SH (20%), CMT (10%).	Poor ARG grd-g odor, patch strng dkgy			
<p>Cement (90%) ARG MRL Y CHLK (10%) m-dk gy-brn gy, mod frm, bly, rhy, ip mtd w/ tr gy brn chk inclus, v calc, no flr, slw mly-sl strng cut, fr brt yel resd ring flr</p> <p>Target</p> <p>Maypoint #: at 1000' VS (~ 8265' MD) Top of Window- 7427' TVD, Target- 7430' TVD, Bottom of Window- 7433' TVD, Anticipated Dip: 89.5°</p> <p>Borehole</p>						



Mud @ 7675' WT 10.1 EV 46 PV 18
YP 15 GS 52330 Fil 5.8 pH 8.0
Cl 800 Hd 40 Sol 8.5% ECD 10.35

Change
C1-C4

Trace Mud



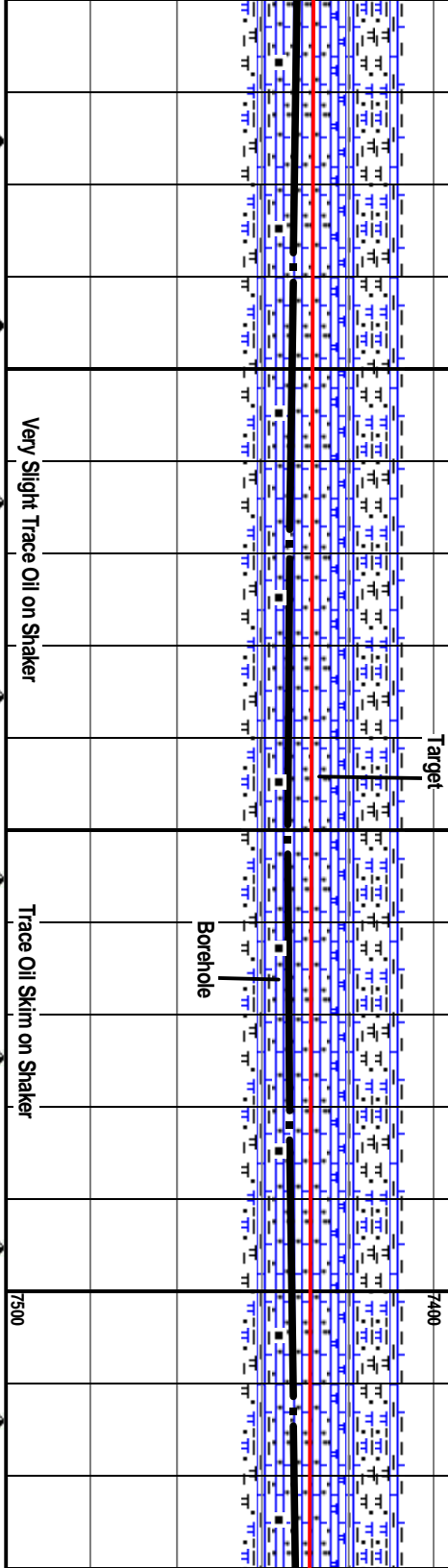
D 7900'	Incl 88.6° Az 333.0° TVD 7432.95'	7889' MD	Incl 88.9° Az 333.5° TVD 7433.61'	7919' MD	Incl 89.9° Az 332.8° TVD 7433.94'	7951' MD	Incl 91.2° Az 331.9° TVD 7433.65'	7982' MD	Incl 91.4° Az 331.4° TVD 7432.94'	8013' MD
---------	---	----------	---	----------	---	----------	---	----------	---	----------

Sample: CMT (25%), CSG SCALE (15%),
CHK (30%) as before, carb ip, v nearly ip
shly Mrist w/ CARB CHK (10%), fnt petro
fair oil skim in Sample, occ dkgy dkbrn
flash cut, nvv brt yel read ring, SH (20%)
blk carb.

ARG CHK (40%) m-dk-lt gy, gybrn, mot ip, frm,
blk y, pired 10-40% clay mix, tr cin, occ blk carb siks
& lams, tr xln Calc, no odor or vis str, patchy
fnt-mod yelgid flr, slow string yelwh cut. CARB
CHK (10%) dkgy, dk brngy, frm, blk y, sl arg, no vis
sm, Snow as above. CMT (40%), SH (10%).

ARG CHK (75%) m-dk-lt gy, gybrn, mot ip, brt,
blk y-sply, rthy-gm y, tr mic surc, 10-30% clay mix,
sl carb ip, many ip, occ dkgy blk siks & lams, tr
lse xln Calc, v fnt petro odor, tr patchy brn sm,
scat sply fnt yel flr, slow-fast string yelwh cuts,
mod yel read ring. SH (25%) v dkgy, blk, brt-frm,
sply-sply-lieg, v calc, carb, many ip, occ wh
chly incl, NSOF, slow string yelwh cut. Very Fine
Cuttings.

ARG CHK (80%) m-dk-lt gy, gybrn, mot ip, brt,
blk y-sply, rthy-gm y, tr mic surc, 10-30% clay mix,
sl carb ip, many ip, occ dkgy blk siks & lams, tr
lse xln Calc, v fnt petro odor, tr patchy brn sm,
scat sply fnt yel flr, slow-fast string yelwh cuts,
mod yel read ring. SH (20%) v dkgy, blk, brt-frm,
sply-sply-lieg, v calc, carb, many ip, occ wh
chly incl, NSOF, slow string yelwh cut. Very Fine
Cuttings.



D 7500'	Incl 88.6° Az 333.0° TVD 7432.95'	7889' MD	Incl 88.9° Az 333.5° TVD 7433.61'	7919' MD	Incl 89.9° Az 332.8° TVD 7433.94'	7951' MD	Incl 91.2° Az 331.9° TVD 7433.65'	7982' MD	Incl 91.4° Az 331.4° TVD 7432.94'	8013' MD
---------	---	----------	---	----------	---	----------	---	----------	---	----------

Sample: CMT (25%), CSG SCALE (15%),
CHK (30%) as before, carb ip, v nearly ip
shly Mrist w/ CARB CHK (10%), fnt petro
fair oil skim in Sample, occ dkgy dkbrn
flash cut, nvv brt yel read ring, SH (20%)
blk carb.

ARG CHK (40%) m-dk-lt gy, gybrn, mot ip, frm,
blk y, pired 10-40% clay mix, tr cin, occ blk carb siks
& lams, tr xln Calc, no odor or vis str, patchy
fnt-mod yelgid flr, slow string yelwh cut. CARB
CHK (10%) dkgy, dk brngy, frm, blk y, sl arg, no vis
sm, Snow as above. CMT (40%), SH (10%).

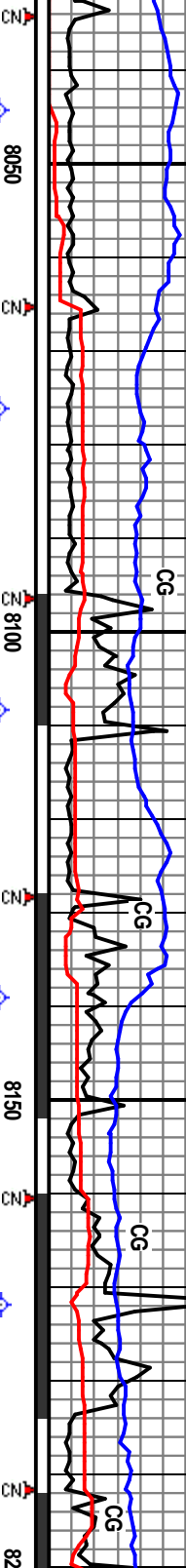
ARG CHK (75%) m-dk-lt gy, gybrn, mot ip, brt,
blk y-sply, rthy-gm y, tr mic surc, 10-30% clay mix,
sl carb ip, many ip, occ dkgy blk siks & lams, tr
lse xln Calc, v fnt petro odor, tr patchy brn sm,
scat sply fnt yel flr, slow-fast string yelwh cuts,
mod yel read ring. SH (25%) v dkgy, blk, brt-frm,
sply-sply-lieg, v calc, carb, many ip, occ wh
chly incl, NSOF, slow string yelwh cut. Very Fine
Cuttings.

ARG CHK (80%) m-dk-lt gy, gybrn, mot ip, brt,
blk y-sply, rthy-gm y, tr mic surc, 10-30% clay mix,
sl carb ip, many ip, occ dkgy blk siks & lams, tr
lse xln Calc, v fnt petro odor, tr patchy brn sm,
scat sply fnt yel flr, slow-fast string yelwh cuts,
mod yel read ring. SH (20%) v dkgy, blk, brt-frm,
sply-sply-lieg, v calc, carb, many ip, occ wh
chly incl, NSOF, slow string yelwh cut. Very Fine
Cuttings.



Readings-
gling Shaker
ens

WOB 10
RPM 0/45
PP 1800
SPM 100



8044' MD
Incl 91.7°
Az 331.7°
TVD 7432.11'
VS 783.54'

rm, mott ip, brt,
cr, 10-30% clay mtx,
k stks & lams, tr
kary brn sh,
patchy brn sh,
strmg yealh cuts,
dk gyl, blk, brt-frn,
manly ip, occ wh
lwh cut. Very Fine

8076' MD
Incl 92.0°
Az 331.0°
TVD 7431.07'

ARG CHK (80%) m-dk-lt gy, gy/brn, mott ip, brt,
biky-sply, rthy-grny, tr mic sucr, 10-30% clay mtx,
sl carb ip, many ip, occ dkgy blk stks & lams, tr
lse xin Calc, v frnt petro odor, tr patchy brn sh,
scat sply fin yeal flr, slow-fast strmg yealh cuts,
mod yeal resd ring, SH (20%) v dkgy, blk, brt-frn,
sply-sply-lrge, v calc, carb, many ip, occ wh
chly incl, NSOF, slow strmg yealh cut. Very Fine
Cuttings.

8108' MD
Incl 92.7°
Az 330.5°
TVD 7429.76'
VS 844.93'

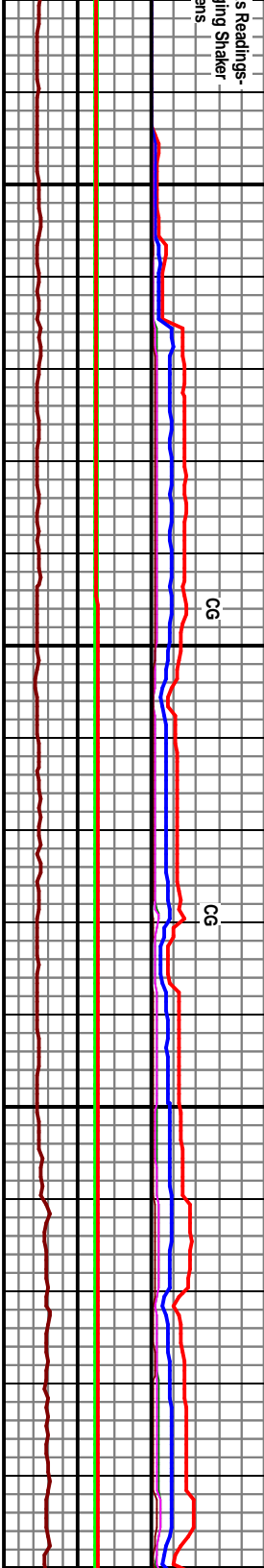
ARG CHK (90%) m gy brn, com mtd w/in
Inclust/m lams, m frm, pred biky-ip sb pily, rthy,
m lam/varved, v calc: sply- even dl yl flr, gd
lined string cut, brt yeal resid ring flr. Fnt Oil
Odor, SH (10%) dk gy, frm, biky-sb pily, m
granstly txt, m calc, no flr, slw mlky-sl string
cut, wk yl resid ring flr. Vy fine Cigs.

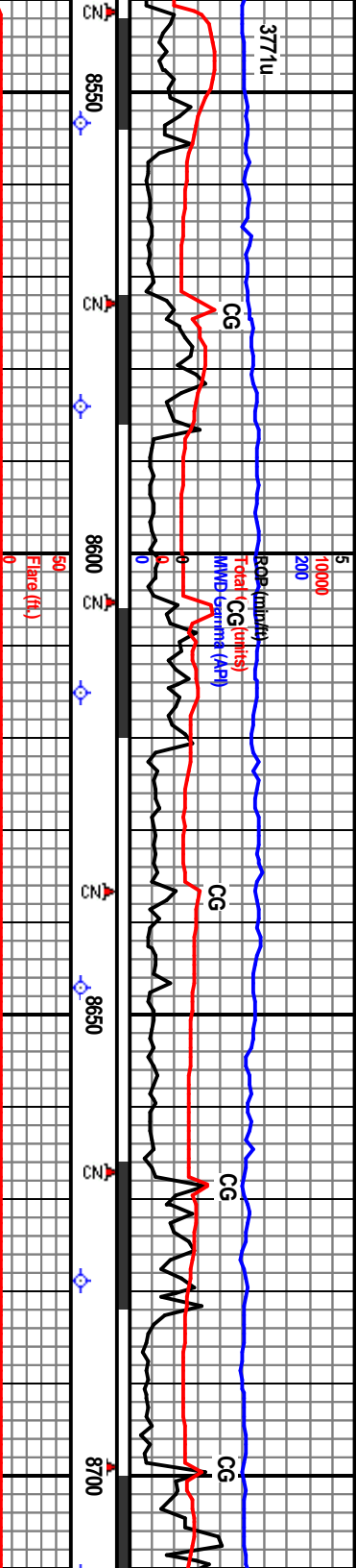
8139' MD
Incl 91.8°
Az 330.3°
TVD 7428.54'

ARG CHK (95%) m gy brn, com mtd w/in inclust/m
lams, m frm, pred biky-ip sb pily, rthy, m
lam/varved, v calc: sply- even dl yl flr, gd lined
string cut, brt yeal resid ring flr. Fnt Oil Odor. Abnt
Frac fill Calc, wh, amorp & c xin.
SH (5%) dk gy, frm, biky-sb pily, m granstly
txt, m calc, no flr, slw mlky-sl string cut, wk yl
resid ring flr.
Vy fine Cigs (0.25-1.0mm).

Trace Oil Skin on Shakers

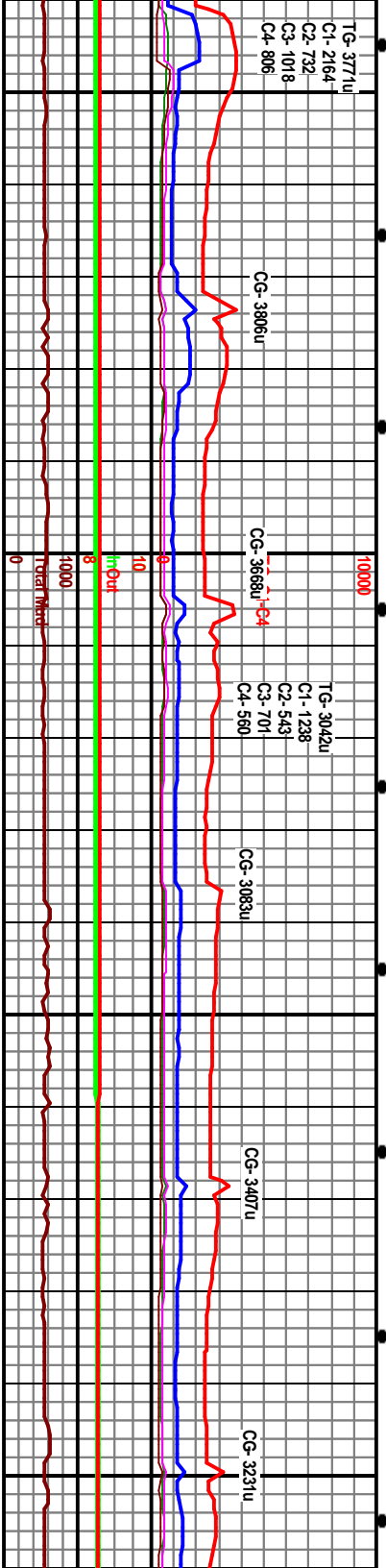
Mud @ 8138' WT 8.5 FV 28 PV 2
YP 1 GS 1/1/1 FIL 40 DH 8.0
CI 900 Hd 200 Sol 1.0% ECD 8.4

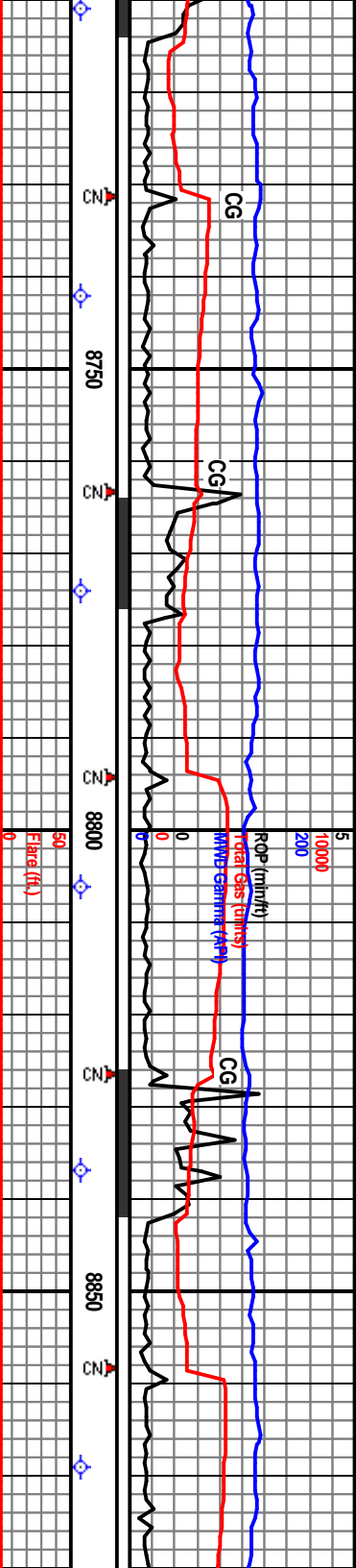




8553' MD Incl 90.1° Az 317.4° TVD 7434.73' VS 1283.25'	SIP 118#	8584' MD Incl 90.0° Az 315.5° TVD 7434.7'	7300 TVD	8615' MD Incl 89.7° Az 314.0° TVD 7434.79' VS 1345.23	8647' MD Incl 89.3° Az 313.4° TVD 7435.06'	8679' MD Incl 89.5° Az 312.7° TVD 7435.40' VS 1409.21'	8711' Incl 90° Az 312° TVD 7435.40'
ARG CHK (95%) mott m-l-dk gy. gybrn. brit. blkly, pred rthy, occ shwxy-grny, tr mic suc, occ dkgy blk brn siks & lams, 10-30% clay mx, tr-occ xin Calc fld mic frac, sl carb lp, tr Sh pgs, fr petro odor, patchy blk brn sn, frt yeild flr, imed flash-fast string cut, brt yel resd ring. SH (5%). Very Fine Cuttings.		ARG CHK (90%) mott m-l-dk gy. gybrn. brit. blkly, pred rthy, occ shwxy-grny, tr mic suc, occ dkgy blk brn siks & lams, 10-30% clay mx, tr-occ xin Calc fld mic frac, sl carb lp, occ Sh pgs, fr petro odor, patchy blk brn sn, frt yeild flr, imed flash-fast string cut, brt yel resd ring. SH (10%) dkgy blk, st-brt-frn, sply-sply-reg, grny, v calc. carb, occ xin Calc incl. slow-fast string yelwh cuts. Very Fine Cuttings.	7400	ARG CHK (95%) gybrn, m-dk-lt gy, mott lp, brit, blkly-sply, pred rthy, grny-mic suc, lp, 10-25% clay mx, medly lp, occ dkgy brn siks & lams, tr carb, scat xin Calc / occ Calc fld mic frac, tr Sh pgs, fr odor, scat patchy-even brn o sin, even mod yel flr, imed flash yelwh cut, brt yel resd ring. SH (5%). Very Fine Cuttings.		ARG CHK (95%) gybrn, m-dk-lt gy, mott lp, brit, blkly-sply, pred rthy, grny-mic suc, lp, 10-25% clay mx, medly lp, occ dkgy brn siks & lams, tr carb, scat xin Calc / occ Calc fld mic frac, tr Sh pgs, fr odor, scat patchy-even brn o sin, even mod yel flr, imed flash yelwh cut, brt yel resd ring. SH (5%). Very Fine Cuttings.	

Heavy Oil Skin on Shakers

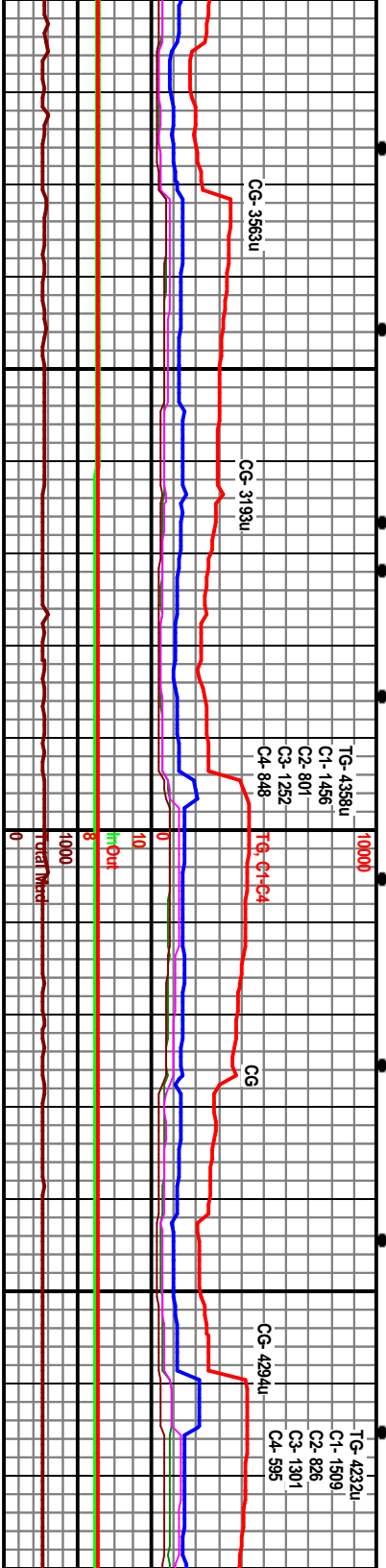


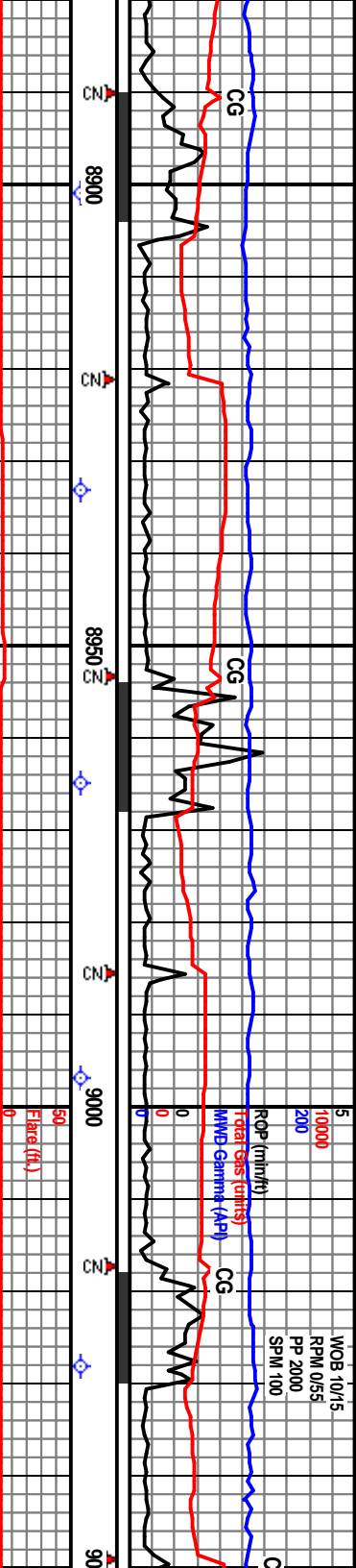


MD 12° 23'	8742' MD Incl 89.8° Az 311.6° TVD 7435.48' VS 1472.15'	8774' MD Incl 89.4° Az 310.7° TVD 7435.71'	7300 TVD 8806' MD Incl 89.3° Az 310.0° TVD 7436.07' VS 1535.98'	8837' MD Incl 90.2° Az 308.6° TVD 7436.21'	8869' MD Incl 89.5° Az 308.1° TVD 7436.29' VS 1598.64'
CHK (95%) gybm, m-dk-lt gy, mott ip, brt, asphly, pred thly, gry-mic sucr ip, 10-25% rx, many ip, occ dkgy brn siks & lams, tr seat xln Calc / occ Calc fld mic frags, tr Sh fr odor, seat patchy-even brn o sfn, even yel flr, l med flash yelwn cut, brt yel resd SH (5%), Very Fine Cuttings.	ARG CHK (80%) gybm brn l-m-dkgy, mott ip, gen as before, incr gry-mic sucr, incr xln Calc, occ Sh pgs & blk bit, brn sfn com, mod-ht yeild flr, l med flash cuts. SH (20%) blk, brt, carb-petroff / blk bit incl, occ xln Calc fld mic frags, fast strng yelwn cuts. Very Fine Cuttings.	No Sample.	Poor Sample- Extremely Fine Cuttings (90%) l-m gy, gybrn-brn, dk gy, mc gry-mic sucr, pred 5-25% clay 20-40% clay, abnt xln Calc, sl carb ip strong petro odor, brn sfn com, mc flash yelwn cut, brt resd ring. SH dkgy blk carb, occ silv sl silty.		

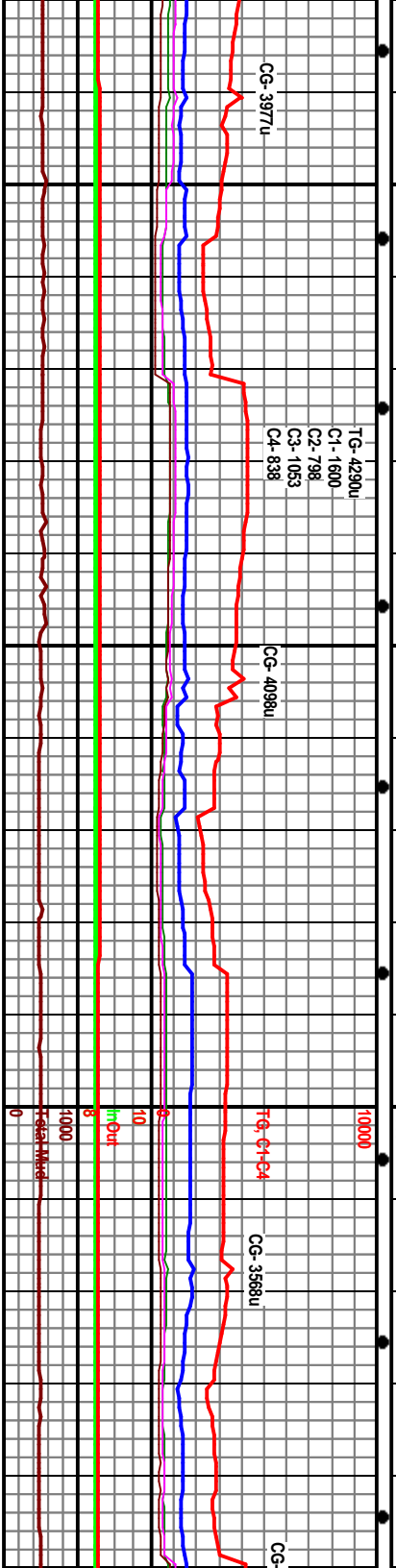
Waypoint #2: at 2000' VS (~ 9283' MD) Top of Window-7434' TVD,
Target- 7437' TVD, Bottom of Window- 7440' TVD,
Apparent Dip: 89.6°

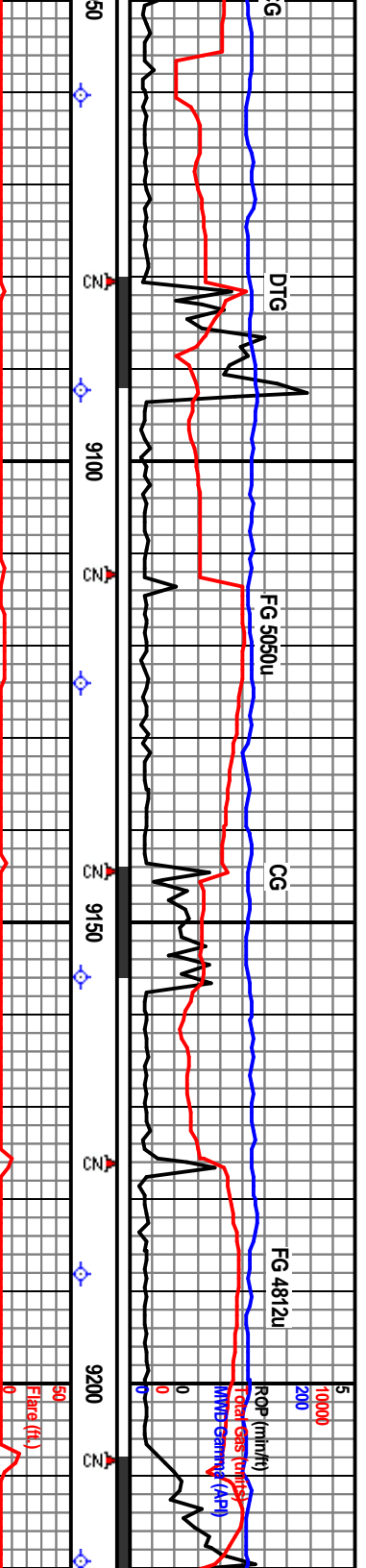
Heavy Oil Skim on Shakers





MD	Incl	Az	TVD	VS	Description
8901' MD	Incl 89.6°	Az 306.3°	TVD 7436.54'		Poor Sample- Extremely Fine Cuttings. CHALK (90%) lcn gy, gybrn-brn, dk gy, mott lp, brt, blk, gny-rhy-mic suc, pred 5-25% cly mx, arg lp / 20-40% cly, abnt xin Calc, sl carb lp / shv plgs, strong petro odor, brn sm con, mod yel flor, imed flash yelwh cut, brt resd ring. SH (10%) pred dkyg blk carb, occ silv sl stly.
8933' MD	Incl 89.7°	Az 306.3°	TVD 7436.74'	VS 1662.01'	
8965' MD	Incl 89.5°	Az 304.6°	TVD 7436.96'		ARG CHK (95%) mott m-l-dk gy, gybrn, brn, brt, blk, rhy-grny, tr mic suc, 5-25% cly mx, occ xin Calc, occ dkyg brn stks & lams, occ dkyg blk Sh plgs & bit, strong petro odor, brn sm, mod yelgid flor, imed flash cut, brt yel resd ring. SH (5%), Very Fine Cuttings.
8997' MD	Incl 89.7°	Az 303.3°	TVD 7437.18'	VS 1725.01'	
9028' MD	Incl 89.7°	Az 302.1°	TVD 7437.34'		Poor Sample- Poor Cuttings Return at Shaker- Extremely Fine Cuttings. ARG CHK (95%), SH (5%), Gen as before:





9060' MD
Incl 89.6°
Az 301.2°
TVD 7437.62'
VS 1786.49

9092' MD
Incl 89.6°
Az 299.9°
TVD 7437.76'

9124' MD
Incl 89.5°
Az 298.8°
TVD 7438.01'
VS 1848.35

9156' MD Incl
89.9° Az
297.9° TVD
7438.18'

9188' MD Incl
89.5° Az
296.8° TVD
7438.35' VS
1909.58

9219'
Incl 89.5°
Az 299.9°
TVD 7437.76'

ARG CHK (100%) most m-l-dk gy. gybrn. brt. pred blkly, sply ip, rthy-gmry, 10-40% clay mtx, occ dkgy silks & lamn, sl marly ip, occ shly pygs, it-occ xln Calc. fr petro odor, patchy brn snn, mod-fnt yieldld floor, lined flash-v fast strimg yelwh cut, brt yel resd ring.

ARG CHK (100%) most m-l-dk gy. gybrn. brt. pred blkly, sply ip, rthy-gmry, 10-40% clay mtx, occ dkgy silks & lamn, sl marly ip, occ shly pygs, it-occ xln Calc. fr petro odor, patchy brn snn, mod-fnt yieldld floor, lined flash-v fast strimg yelwh cut, brt yel resd ring.

ARG CHK (100%) md-dk gybrn/brngy, mttd w/lt rnbrn, frm, blkly, ip slvy txt, rthy, micro lam/varved, v argill/h clay, v calc; sply brn oil snn, even dl-brt y/l, gd lined strimg cut, brt y/l resid ring ft. Strong Oil odor. Vy fine Cigs (0.2-0.5mm)

ARG CHK (100%) gybrn/brngy, mte blkly, rthy, micro lam, sply brn oil snn, cut, brt y/l resid ring. Vy fine Cigs

Heavy Oil Skim on Shakers

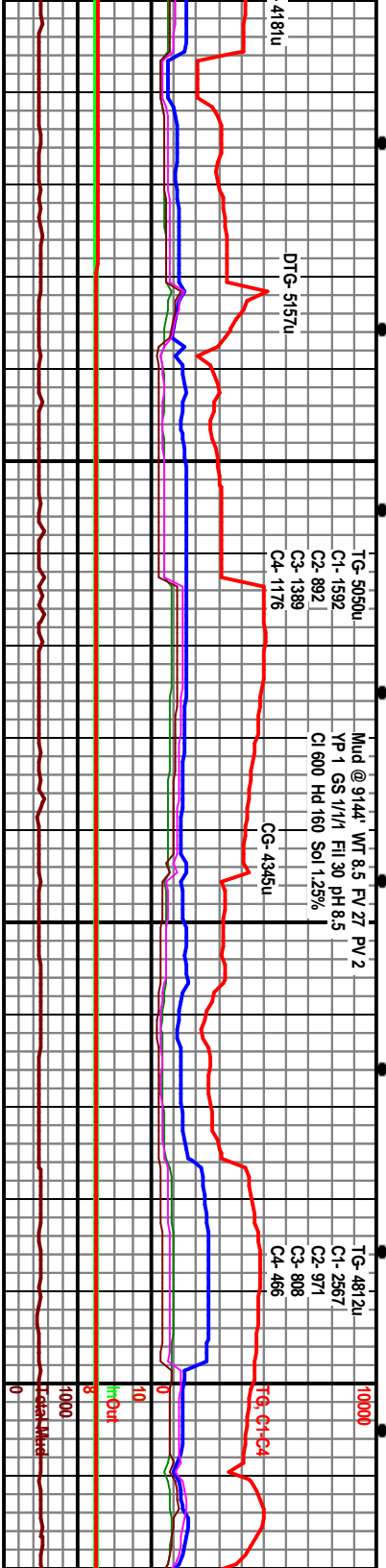
TG-5050u
C1-1592
C2-892
C3-1389
C4-1176

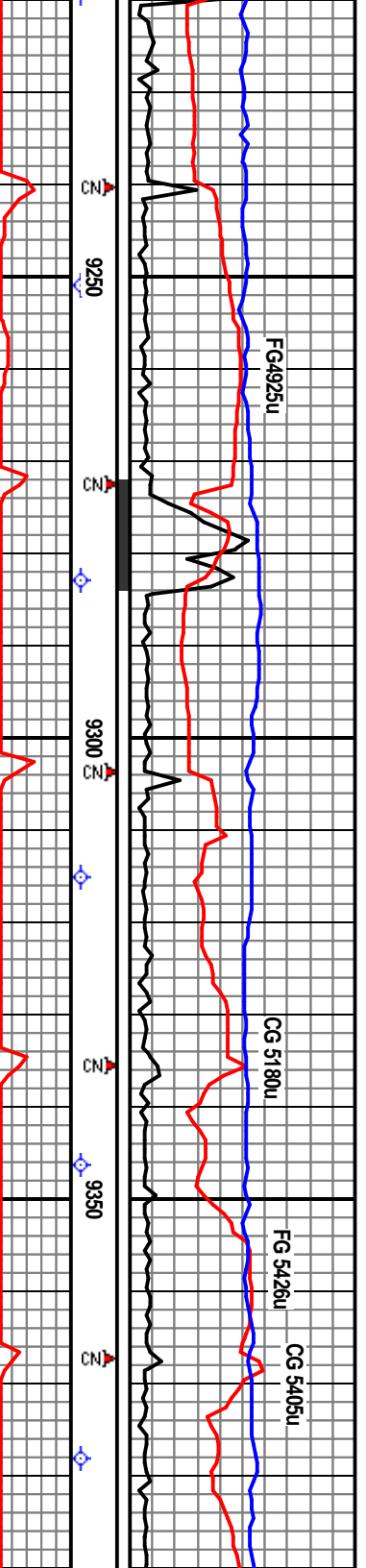
Mud @ 9144'
YP 1 GS 1/1/1 Fil 30 BH 8.5
Cl 800 Hd 160 Sol 1.25%

TG-4812u
C1-2567
C2-971
C3-808
C4-466

Waypoint #2: at 2000
Target- 7437' TVD, B
Apparent Dip: 89.6

Heavy Oil





MD 9.4° 5.7° 438.65'	9251' MD Incl 90.0° Az 295.4° TVD 7438.82' VS 1989.19	9283' MD Incl 89.7° Az 296.2° TVD 7438.90' VS 1999.45	9315' MD Incl 89.4° Az 295.5° TVD 7439.56' VS 2029.72	9346' MD Incl 89.8° Az 295.4° TVD 7439.78'	9378' MD Incl 90.0° Az 294.9° TVD 7439.83' VS 2089.11
-------------------------------	---	---	---	---	---

No vis change: md-dk
 md w/lt tr/brn, frm, blk, ip slty
 tan/warved, v argilh cty, v calc:
 even dl-brt vl fl, gd lined string
 fl. Strong Oil odor.

ARG CHK (100%) No vis change: md-dk
 gybrn/brngy, mtld w/lt tr/brn, frm, blk, ip slty
 tx, rthy, micro lam/warved, v argilh cty, v calc:
 sply brn oil sin, even dl-brt vl fl, gd lined string
 cut, brt vl resid ring fl. Strong Oil odor.
 Vy fine Cigs (0.2-0.5mm)

ARG CHK (100%) No vis change: md-dk
 gybrn/brngy, mtld w/lt tr/brn, frm, blk, ip slty
 tx, rthy, micro lam/warved, v argilh cty, v calc:
 sply brn oil sin, even dl-brt vl fl, gd lined string
 cut, brt vl resid ring fl. Strong Oil odor.
 Vy fine Cigs (0.2-0.5mm)

ARG CHK (100%) No vis change: md-dk
 gybrn/brngy, mtld w/lt tr/brn, frm, blk, ip slty
 tx, rthy, micro lam/warved, v argilh cty, v calc:
 v calc: sply brn oil sin, even dl-brt vl fl, gd lined
 string cut, brt vl resid ring fl. Strong Oil odor.
 wh amorp frac fill calc:
 fine Cigs (0.2-0.5mm)

Bottom of Window- 7440' TVD.

Waypoint #3: at 3000 VS (~ 10360 MD) Top of Window-7438' TVD,
 Target- 7441' TVD, Bottom of Window- 7444' TVD,
 Apparent Dip: 89.7°

Skim on Shakers

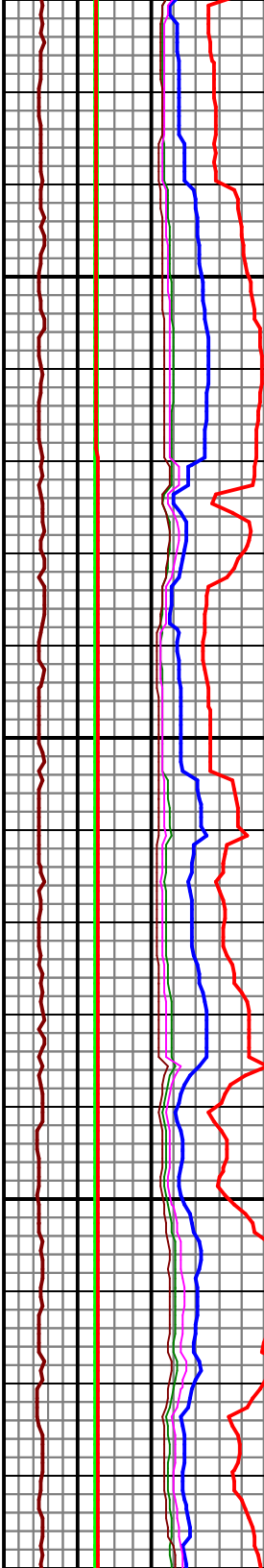
Heavy Oil on Shakers: Strong
 Hydrocarb. Odor

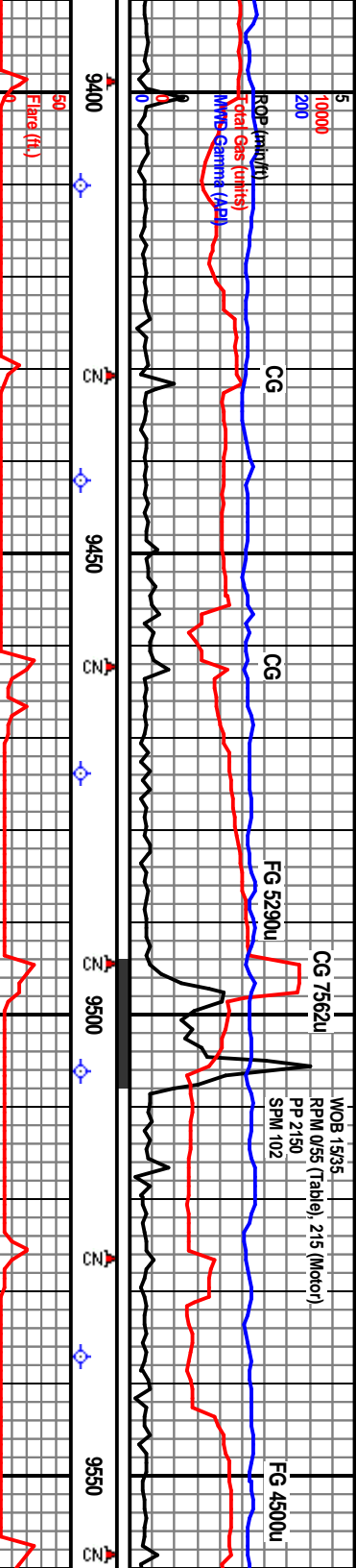
TG- 4925u
 C1- 2537
 C2- 970
 C3- 850
 C4- 570

CG- 5181u

TG- 5426u
 C1- 2050 C2- 1090
 C3- 1450 C4- 840

CG- 5887u





MOB 1535
RPM 0/55 (Tshel) 215 (Motor)
PP 2150
SPM 102

7300 TVD
9410' MID Incl
89.4° Az
294.3° TVD
7439.59'

9442' MID Incl
89.6° Az
293.8° TVD
7439.87' VS
2149.08

9474' MID Incl
89.8° Az
293.3° TVD
7440.04'

9506' MID Incl
89.6° Az
292.1° TVD
7440.20'
VS 2208.56

9537' MID Incl
89.8° Az
290.7° TVD
7440.37'

ARG CHK (100%) md-dk gy brn & brngy mtld w/ ltr tnlbrn inclus & mic lam, m sft, blkly, rthy, mic gran txt, com mic lam/varvd, hi ~40% arg/cly cont, v calc: sply dk brn oil sn, dl-brt y/ fi, gd lmmed strng y/ cut, hvy brt y/ resid ring fi, Strong Oil Odor.

ARG CHK (100%) md-dk gy brn & brngy mtld w/ ltr tnlbrn inclus & mic lam, m sft, blkly, rthy, mic gran txt, com mic lam/varvd, hi ~40% arg/cly cont, v calc: sply dk brn oil sn, dl-brt y/ fi, gd lmmed strng y/ cut, hvy brt y/ resid ring fi, Strong Oil Odor.

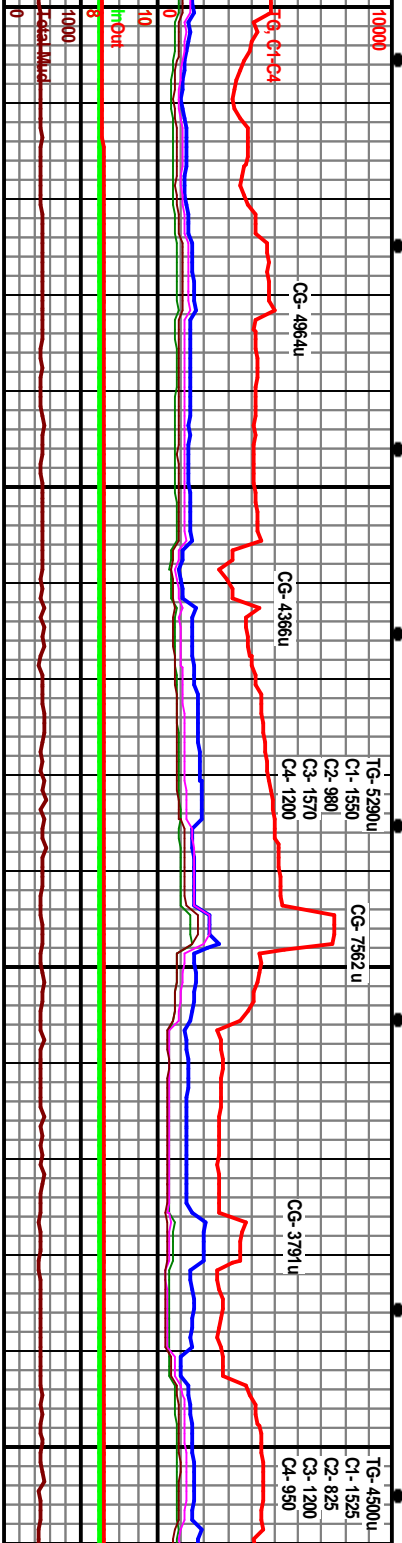
ARG CHK (100%) no vis lith change: md-dk gy brn & brngy mtld w/ ltr tnlbrn inclus & mic lam, m sft, blkly, rthy, mic gran txt, com mic lam/varvd, hi ~40% arg/cly cont, v calc: sply dk brn oil sn, dl-brt y/ fi, gd lmmed strng y/ cut, hvy brt y/ resid ring fi, Strong Oil Odor.

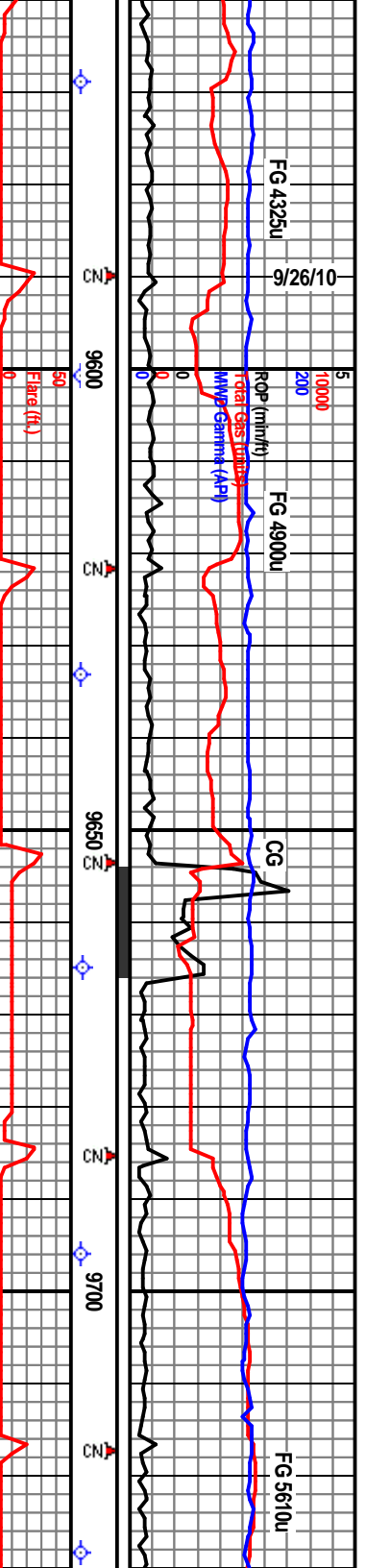
ARG & br dk gy lam/varvd, hi dk br y/ cu

Target

Heavy Oil on Shakers;
Strong Hydrocarb. Odor

Heavy Oil on Shakers;
Strong Hydrocarb. Odor





9569' MD Incl 89.6° Az 290.0° TVD 7440.53' VS 2266.15	7300 TVD 9601' MD Incl 89.6° Az 289.0° TVD 7440.76'	9633' MD Incl 89.9° Az 288.9° TVD 7440.90' VS 2323.89	9664' MD Incl 89.5° Az 289.2° TVD 7441.06'	9696' MD Incl 89.7° Az 288.9° TVD 7441.28' VS 2380.65	9728' M 89.8° 288.1° 7441.42'
---	---	---	---	---	--

CHK (100%) no vis lith change: md-dk gy brn
brngy mtdld w/ lr trdbm inclus & mic lam, ip v
/ frn-m sft, blkly, rthy, mic gran txt, comm mic
lam/vernd, hi ~40% arg/clcy cont, v calc; sply-even
m oil sn, even dl-brt y/ flr, gd immed string
1, hvy brt y/ resid ring flr, Strong Oil Odor.

ARG CHK (100%) no vis change: md-dk gy brn &
brngy mtdld w/ lr trdbm inclus & mic lam, ip v dk gy,
frn-m sft, blkly, rthy, mic gran txt, com mic
lam/vernd, hi ~40% arg/clcy cont, v calc; sply-even dk
brn oil sn, even dl-brt y/ flr, gd immed string y/
cut, hvy brt y/ resid ring flr, Strong Oil Odor.

ARG CHK (100%) no change: md-dk gy brn & brngy
mtdld w/ lr trdbm inclus & mic lam, ip v dk gy, frn-m
sft, blkly, rthy, mic gran txt, com mic lam/vernd, hi
~40% arg/clcy cont, v calc; sply-even dk brn oil sn,
even dl-brt y/ flr, gd immed string y/ cut, hvy brt y/
resid ring flr, Strong Oil Odor.

ARG CHK (100%) no change: md-dk
mtdld w/ lr trdbm inclus & mic lam
frn-m sft, blkly, rthy, mic gran txt
lam/vernd, hi ~40% arg/clcy cont, v
brn oil sn, even dl-brt y/ flr, gd
cut, hvy brt y/ resid ring flr, Stro

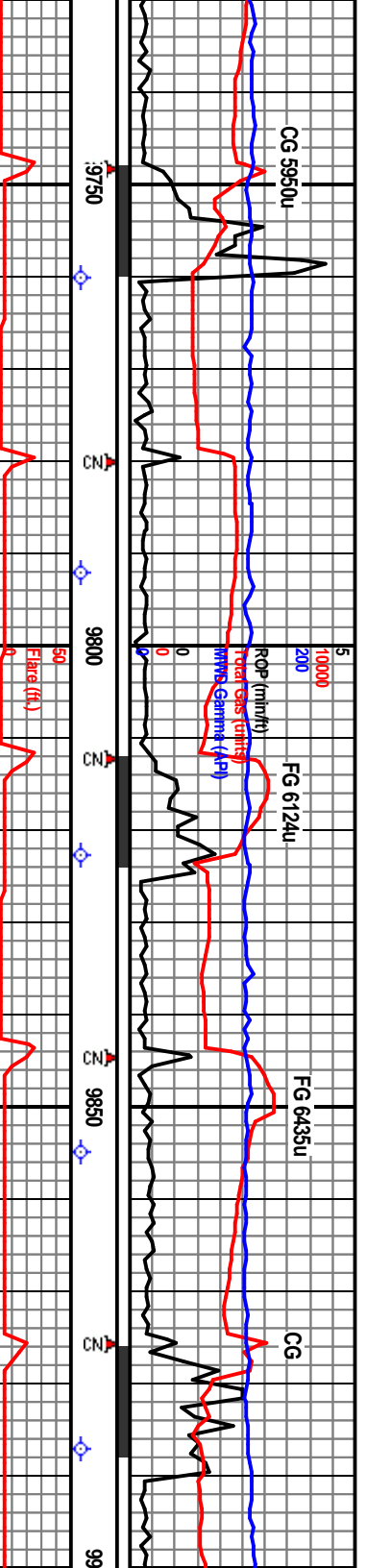
Heavy Oil on Shakers;
Smells Like Money

Heavy Oil on Sh
Strong Hydrocar

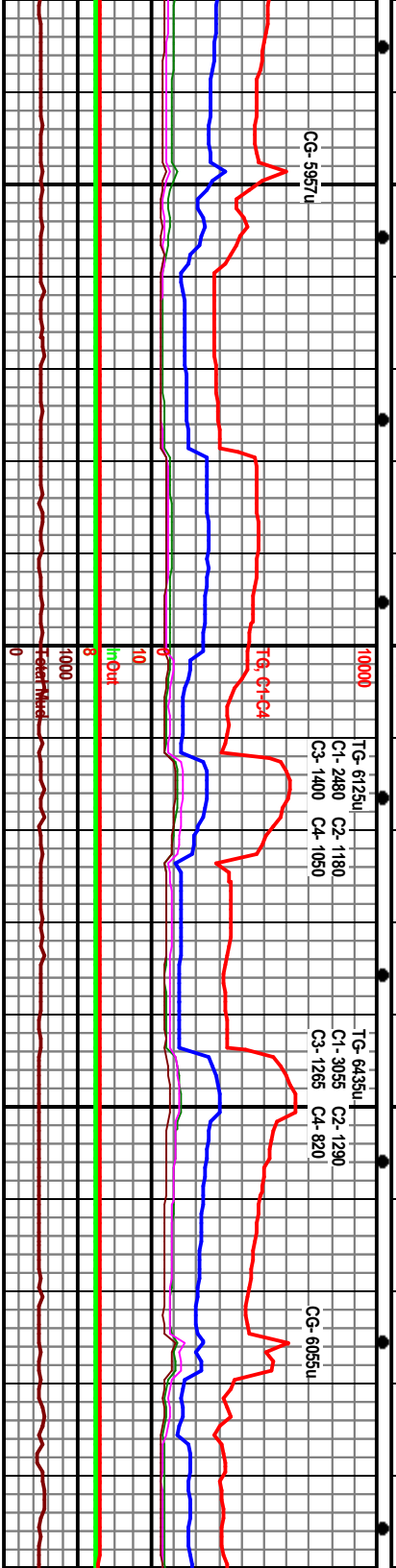
TG- 4900u
C1- 1580 C2- 910
C3- 1370 C4- 1060

TG- 5610u
C1- 3125 C2- 1100
C3- 780 C4- 600





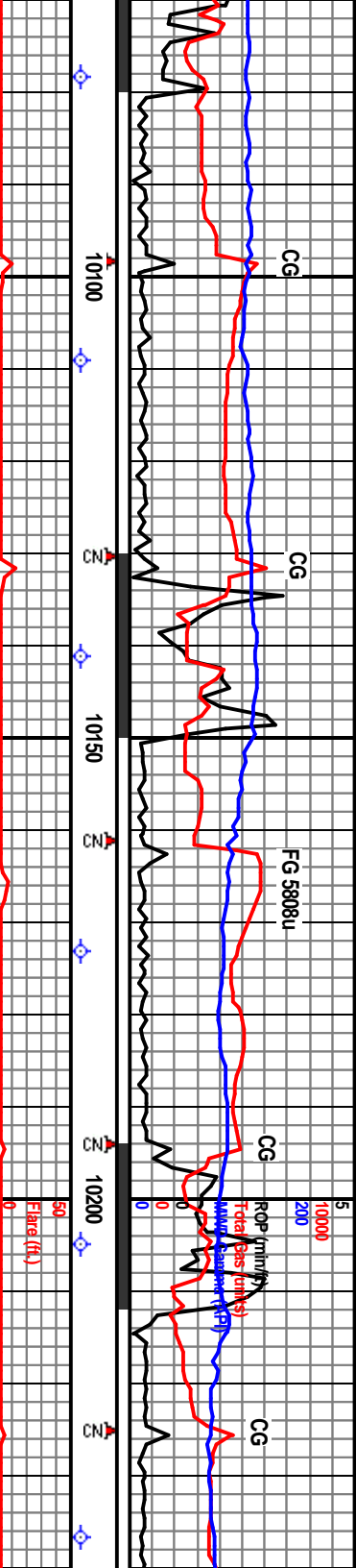
Incl	MD	Az	TVD	Remarks
9760'	MD	Incl 89.5° Az 288.2°	7441.62' VS 2437.95	ARG CHK (100%) no change: md-dk gy brn & brngy mttld w/ tr tubrn inelus & mic lam, ip v dk gy, frm-m sft, blkly, rthy, mic gran txt, com mic lam; varvd, hi >40%? arg/cly cont, v calc: sply-even dk brn oil sn, even d-brt y/ flr, gd immed string y/ cut, hvy brt y/ resid ring flr, Strong Oil Odor.
9792'	MD	Incl 89.7° Az 287.5°	7441.94' TVD	ARG CHK (100%) no change: md-dk gy brn & brngy mttld w/ tr tubrn inelus & mic lam, ip v dk gy, frm-m sft, blkly, rthy, mic gran txt, com mic lam; varvd, hi >40%? arg/cly cont, v calc: sply-even dk brn oil sn, even d-brt y/ flr, gd immed string y/ cut, hvy brt y/ resid ring flr, Strong Oil Odor.
9823'	MD	Incl 89.6° Az 288.1°	7442.03' VS 2494.11'	ARG CHK (100%) no change: md-dk gy brn & brngy mttld w/ tr tubrn inelus & mic lam, ip v dk gy, frm-m sft, blkly, rthy, mic gran txt, com mic lam; varvd, hi >40%? arg/cly cont, v calc: sply-even dk brn oil sn, even d-brt y/ flr, gd immed string y/ cut, hvy brt y/ resid ring flr, Strong Oil Odor.
9855'	MD	Incl 89.9° Az 287.8°	7442.17' TVD	ARG CHK (100%) no change: md-dk gy brn & brngy mttld w/ tr tubrn inelus & mic lam, ip v dk gy, frm-m sft, blkly, rthy, mic gran txt, com mic lam; varvd, hi >40%? arg/cly cont, v calc: sply-even dk brn oil sn, even d-brt y/ flr, gd immed string y/ cut, hvy brt y/ resid ring flr, Strong Oil Odor.
9887'	MD	Incl 90.3° Az 288.8°	7442.11' VS 2551.31'	ARG CHK (100%) no change: md-dk gy brn & brngy mttld w/ tr tubrn inelus & mic lam, ip v dk gy, frm-m sft, blkly, rthy, mic gran txt, com mic lam; varvd, hi >40%? arg/cly cont, v calc: sply-even dk brn oil sn, even d-brt y/ flr, gd immed string y/ cut, hvy brt y/ resid ring flr, Strong Oil Odor.



Waypoint #3: at 3000' VS (~ 10360' MD) Top of Window-7438' TVD,
 get- 7441' TVD, Bottom of Window- 7444' TVD.
 Apparent Dip: 89.7°

Heavy Oil on Shakers: Strong
 Hydrocarb. Odor

Target



10078' MD Incl 89.3° Az 289.9° TVD 7442.89' VS 2723.15'	10109' MD Incl 90.3° Az 291.0° TVD 7443.0'	10109' MD Incl 90.7° Az 291.1° TVD 7442.72' VS 2751.4'	10173' MD Incl 91.1° Az 291.4° TVD 7442.22'	7300 TVD 10205' MD Incl 91.6° Az 292.4° TVD 7441.46' VS 2839.48'	10237' MD Incl 91.7° Az 292.2° TVD 7440.54'
---	---	--	--	---	--

gybrn, m-t gy, mt, brt.
 20% clay mtx, abnt xin Calc,
 rigid flr, lined fast string yelwh
 ring. CARB ARG CHK (40%)
 m, blk-y-pty-sply, gmy-nic
 suc-rthy tx, v carb, petrofl ip w/ brn o sin & bit, occ

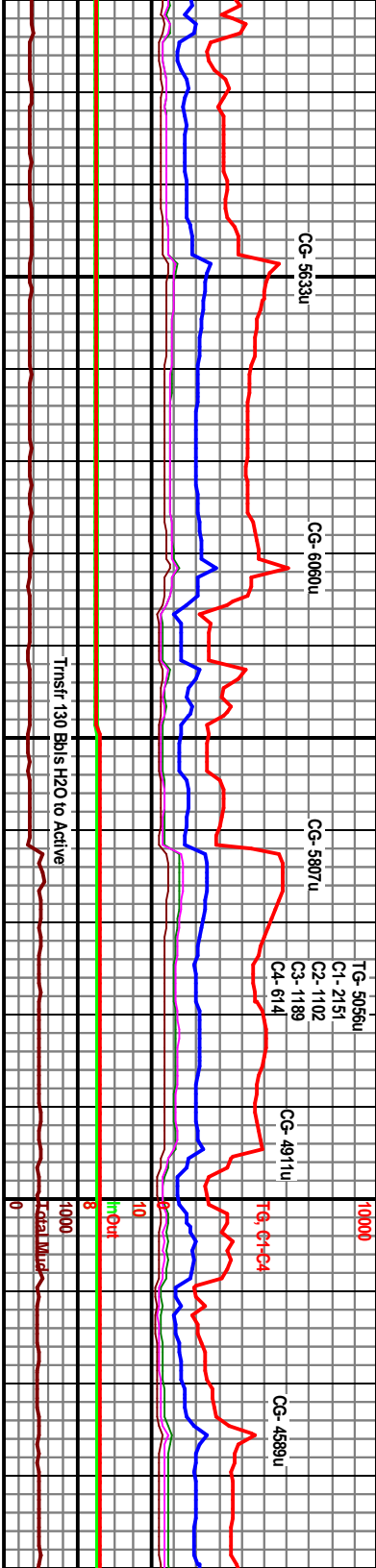
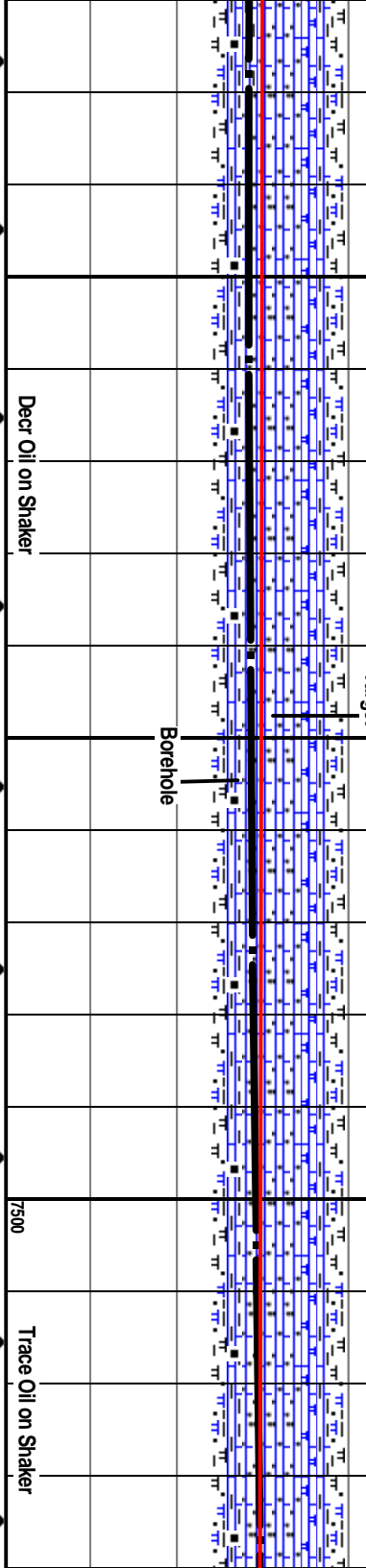
ARG CHK (40%) brn gybrn, m-t gy, mt, brt,
 gmy-rhythmic suc, 5-20% clay mtx, abnt xin Calc,
 patchy brn sin, fat yelgid flr, lined fast string yelwh
 cut, mod-brt yel resd ring. CARB ARG CHK (40%)
 dkgy blk dkbrn, st-frm, blk-y-pty-sply, gmy-nic
 suc-rthy tx, v carb, petrofl ip w/ brn o sin & bit, occ
 xin

Calc, fat spty yel flr, lined fast string yelwh cut,
 mod-brt yel resd ring. SH (20%) blk, v dkgy, frm,
 ply-sply, gmy-rthy-slowxy, v calc, v carb, fast-si string
 yelwh cuts.

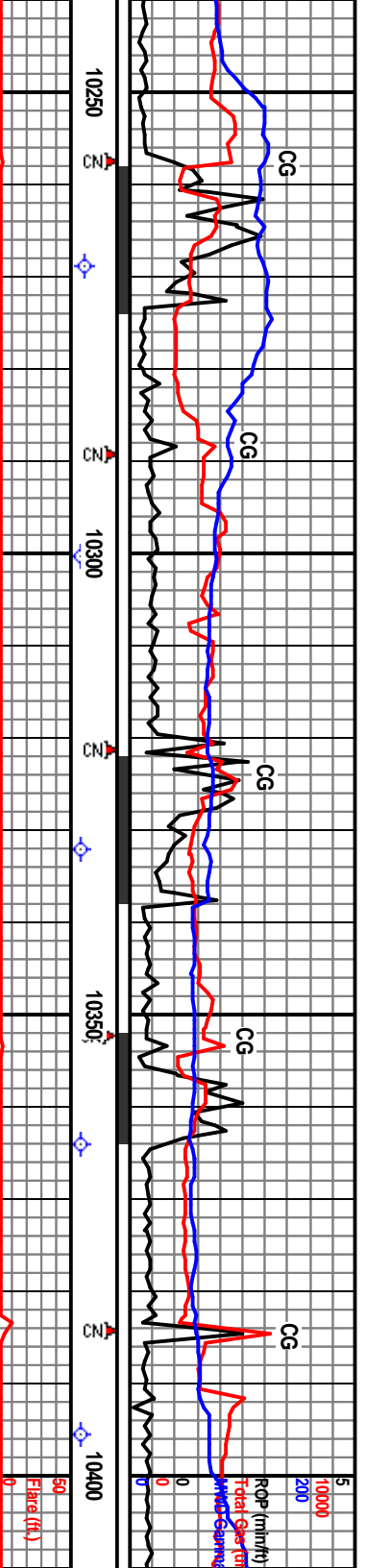
ARG CHK (40%) brn gybrn, m-t gy, mt, brt,
 gmy-rhythmic suc, 5-20% clay mtx, abnt xin Calc,
 patchy brn sin, fat yelgid flr, lined fast string yelwh
 cut, mod-brt yel resd ring. CARB ARG CHK (40%)
 dkgy blk dkbrn, st-frm, blk-y-pty-sply, gmy-nic
 suc-rthy tx, v carb, petrofl ip w/ brn o sin & bit, occ
 xin

Calc, fat spty yel flr, lined fast string yelwh cut,
 mod-brt yel resd ring. SH (20%) blk, v dkgy, frm,
 ply-sply, gmy-rthy-slowxy, v calc, v carb, fast-si string
 yelwh cuts.

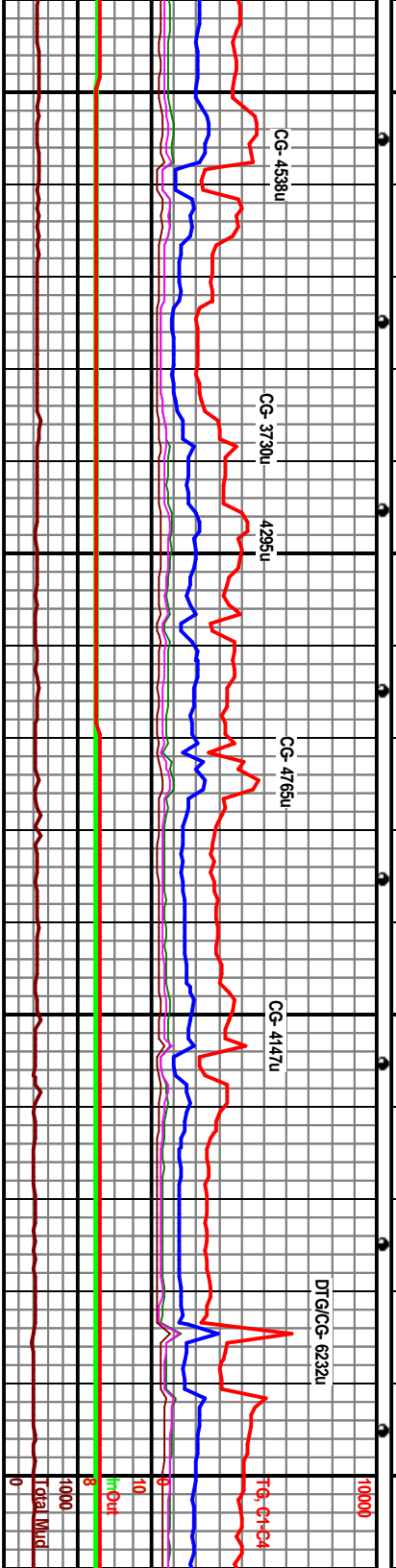
ARG CHK (80%) gybrn, m-lygy, mott ip, b
 rthy-gmy tx, tr mic suc, gran ip, 5-20%
 occ dkgy slts & lams, tr xin Calc, r inooc
 pigs, sl marly ip, faint petro odor, occ pe
 blk sin, fat yelgid flr, lined string yelwh
 brt yel resd ring. SH (20%) v calc & carb
 grdg-Carb Chk ip. Very Fine Cuttings.



Trnsfr 130 Bbis H2O to Active

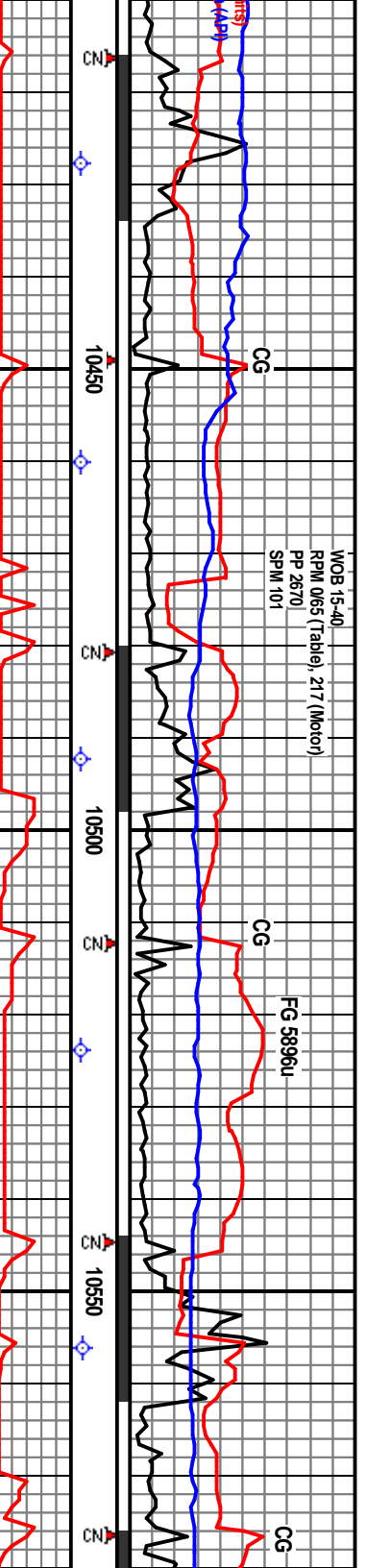


MD	Incl	Az	TVD	VS	Description
10269'	MD	Incl 91.3° Az 293.2°	TVD 7439.70'	VS 2898.65'	ARG CHK (80%) gybrn, m-lgy, mott ip, brlt, rthy-grny txt, tr mic sucr, gran ip, 5-20% clay mx, occ dkyg sites & lams, tr xin Calc, r' linc, tr-occ shy, p'gs, sl many ip, faint petro odor, occ patchy brn blk sh, fnt yeild floor, lined strmg yelwh cut, hvy brt yel resd ring, (20%) v calc & carb, grdg-Carb Chk ip. Very Fine Cuttings.
10300'	MD	Incl 91.2° Az 293.2°	TVD 7439.03'	VS 2957.32'	ARG CHK (90%) brn, gybrn, m-t gy, mott ip, brlt, gryy-rhy-mic sucr, gran ip, 5-15% clay mx, xin Calc com, occ Calc fld mic traces, occ shy p'gs / dkyg sites & lams, fnt petro odor, patchy brn sh, occ fnt yeild floor, lined fast strmg yelwh cut, br-mod yel resd ring, SH (10%), Very Fine Cuttings.
10332'	MD	Incl 90.2° Az 293.9°	TVD 7438.63'	VS 2957.32'	ARG CHK (95%) m gybrn-m brngy mtdl w/ tr inlk brn spks & mic lam, frm, blk-sb p'ly, gen rhy-sl sb wxy, com micro lam/varved, v calc, tr sply brn oil sh, sply-ewn dl vl floor, gd lined strmg cut, gd brt vl resd ring floor.
10364'	MD	Incl 88.9° Az 293.8°	TVD 7438.89'	VS 3017.06'	CHK (5%) v dk gy, frm, blk, gran txt, m calc, no floor, fr lined strmg vl cut, gd resd ring floor.
10396'	MD	Incl 88.8° Az 293.6°	TVD 7439.53'	VS 3017.06'	ARG CHK (5%) v dk gy, frm, blk, gran txt, m calc, no floor, fr lined strmg vl cut, gd resd ring floor.



Waypoint #3: at 3000' VS (~ 10360' MD) Top of Window-7438' TVD,
Target- 7441' TVD, Bottom of Window- 7444' TVD,
Apparent Dip: 89.7°

Waypoint
Target
Appa



10428' MD
Incl 89.3°
Az 294.6°
TVD 7440.06'

ARG CHK (85%) m gybrn-m brngv mtld w/ tr tvlt/ brn spks & mic lam, frm, blkys-sb ply, gen rthy-sl wxy, com micro lam/varved, v calc, tr spy brn oil sin, spy-evn dl vl floor, gd lined strng cut, gd resid ring flor.
SH/CARB
fr med strng vl cut, gd resid ring flor.

10460' MD
Incl 89.6°
Az 294.7°
VS 7440.37'
VS 3077.04'

Going Through
Weatherford Gas
Buster

ARG CHK (100%) m gybrn-m brngv mtld w/ tr tvlt brn spks & mic lam, frm, blkys-sb ply, gen rthy-sl sb wxy, com micro lam/varved, v calc, tr spy brn oil sin, spy-evn dl vl floor, gd lined strng cut, gd brt vl resid ring flor.
SH/CARB CHK (Tr) v dk gy, frm, blkys, gran txt, m calc, no flor, fr med strng vl cut, gd resid ring flor.
Very Fine Cgs (0.5-1.0 mm)

10492' MD
Incl 89.8°
Az 295.4°
TVD 7440.53'

ARG CHK (85%) m gybrn-m brngv mtld w/ tr tvlt brn spks & mic lam, frm, blkys-sb ply, gen rthy-sl sb wxy, com micro lam/varved, v calc, tr spy brn oil sin, spy-evn dl vl floor, gd lined strng cut, gd brt vl resid ring flor.
SH/CARB
CHK (15%) v dk gy, frm, blkys, gran txt, m calc, no flor, fr med strng vl cut, gd resid ring flor.

10524' MD
Incl 89.8°
Az 295.8°
TVD 7440.65'
VS 3137.39'

ARG CHK (100%) m gybrn-m brngv mtld w/ tr tvlt brn spks & mic lam, frm, blkys-sb ply, gen rthy-sl sb wxy, com micro lam/varved, v calc, wh, c xin, prob frae fill, tr spy-evn dl vl floor, gd lined strng cut, gd resid ring flor.
SH/CARB
v dk gy, frm, blkys, gran txt, m calc, no strng vl cut, gd resid ring flor.

10556' MD
Incl 90.2°
Az 296.1°
TVD 7440.65'

Borehole

Int #: at 4000' VS (~ 11400' MID) Top of Window-7434' TVD,
7437' TVD, Bottom of Window-7440' TVD,
arent Dip: 90.2°

Target

Trace Oil on Shakers

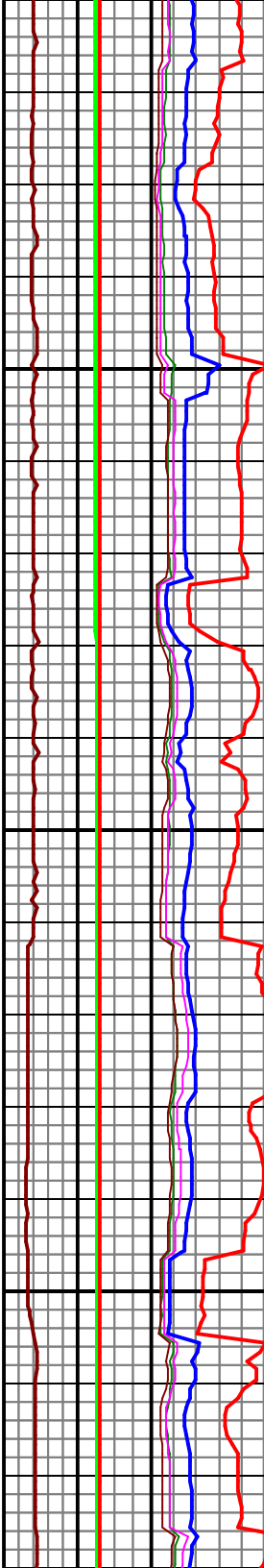
Trace Oil on Shakers

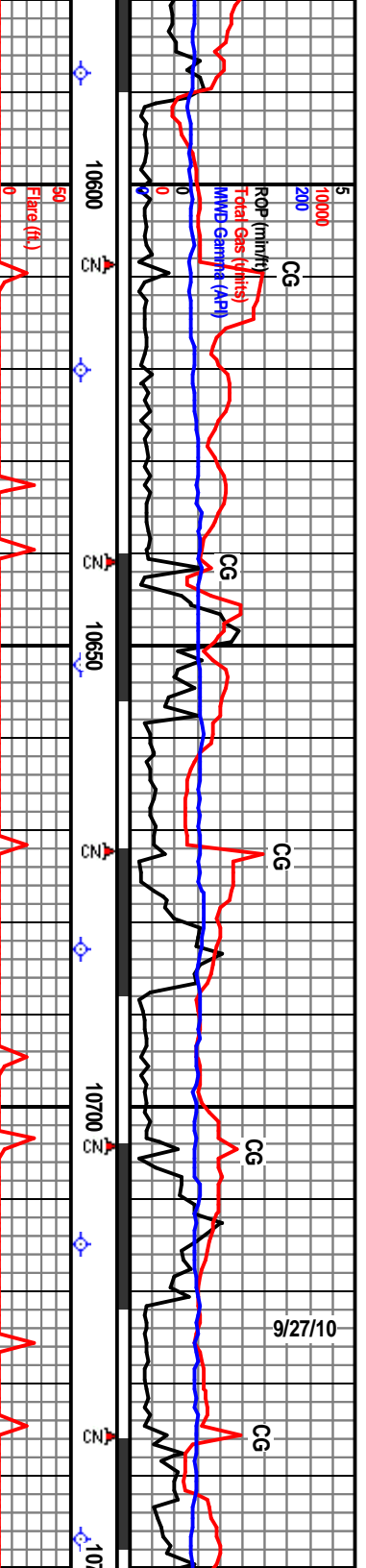
Mid @ 10425' WT 8.6, FV 28 PV 1
YP 2 GS 1/1/1, FI 30 OH 8.0
CI 600 Hd 80 Sol 1.75%

CG-5215u

TG-5896u
C1- 1950 C2- 1140
C3- 1650 C4- 1150

CG-5935u





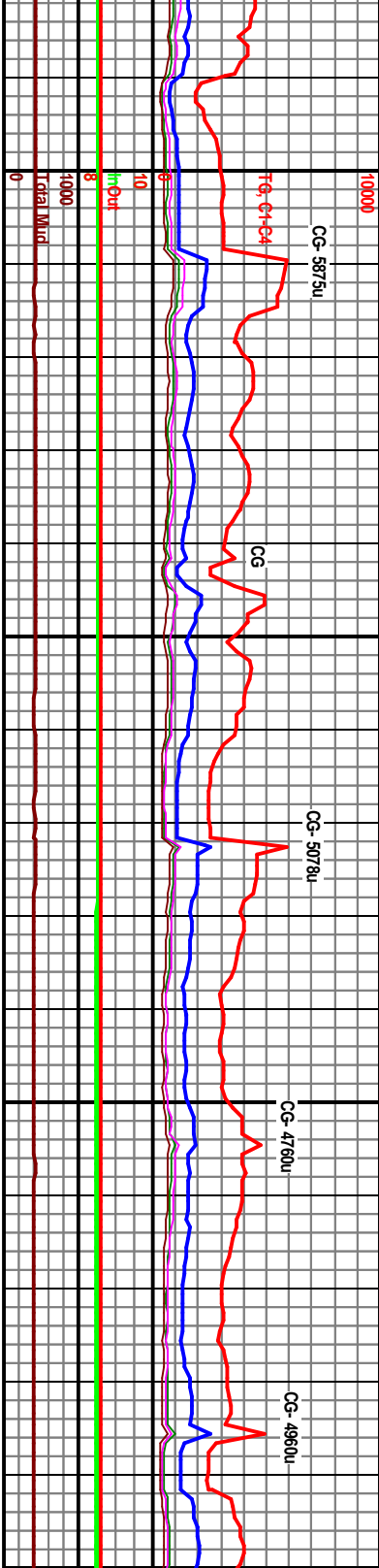
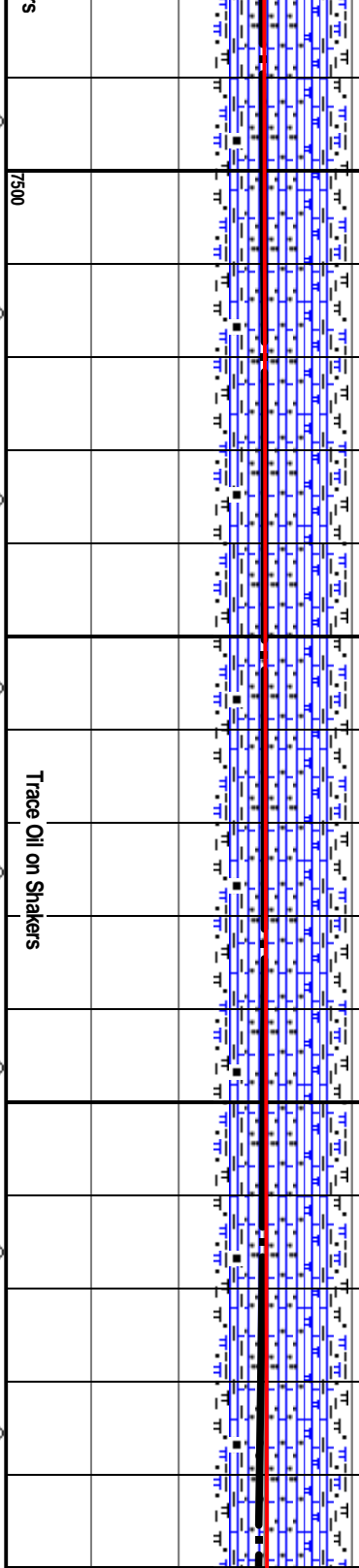
10588' MD Incl 90.4° Az 297.5° TVD 7440.48' VS 3198.12'	7300 TVD	10620' MD Incl 90.6° Az 297.7° TVD 7440.20'	10652' MD Incl 90.0° Az 298.3° TVD 7440.03' VS 3259.33'	10683' MD Incl 89.2° Az 299.2° TVD 7440.25'	10715' MD Incl 89.2° Az 299.9° TVD 7440.69' VS 3320.00'	10747' MD Incl 88.2° Az 300.8° TVD 7441'
---	----------	--	---	--	---	---

nkly-sb ply; gen varved, v calc, tr sply brn oil sn, amorp & c xin, prob frac fill, tr 2 spty brn oil sn, sply-evn dl vl flwr, gd lined strng cut, gd brt vl resid ring flwr. SH/CARB CHK (TR) v dk gy, frm, blkly, gran txt, m calc, no flwr, fr imed strng yl cut; gd resid ring flwr.

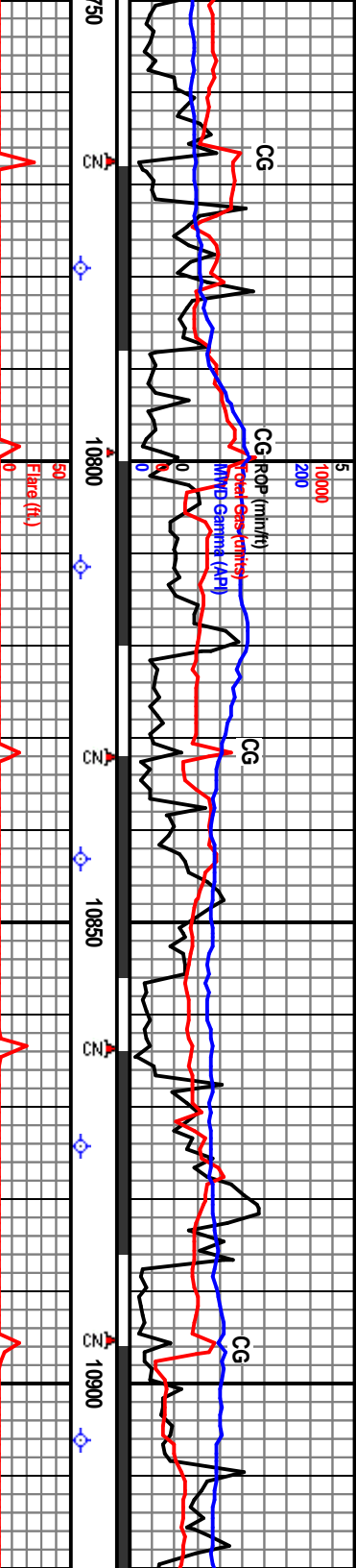
ARG CHK (100%) l-m gy/brn mtld w/ tr twt/lt bm spks & mic lam, frm, blkly-sb ply, pred sb wxy-ip rthy, com micro lam/varved, v calc, tr Calc, wh, amorp & c xin, prob frac fill, tr 2 spty brn oil sn, sply-evn dl vl flwr, gd lined strng cut, gd brt vl resid ring flwr. SH/CARB CHK (TR) v dk gy, frm, blkly, gran txt, m calc, no flwr, fr imed strng yl cut; gd resid ring flwr.

ARG CHK (80%) l-m gy/brn-bmgy mtld w/ tr twt/lt bm spks & mic lam, frm, blkly-sb ply, gen rthy-sb wxy, com micro lam/varved, v calc, tr Calc, wh, c xin, prob frac fill, 2 spty brn oil sn, sply-evn dl vl flwr, gd lined strng cut, gd brt vl resid ring flwr. CARB SH (20%) v dk gy, frm, blkly, mic gran txt, v carb, sl calc, no flwr; fr strng yl cut; gd resid ring flwr.

ARG CHK (95%) l-m gy/brn-bmgy mtld w/ tr twt/lt bm spks & mic lam, frm, blkly-sb ply, gen rthy-sb wxy, com micro lam/varved, v calc, tr Calc, wh, amorp & c xin, prob frac fill, 2 spty brn oil sn, sply-evn dl vl flwr, gd lined strng cut, gd brt vl resid ring flwr. CARB SH (15%) v dk gy, m sft-frm, blkly, mic gran txt, v carb, sl calc, no flwr, fr mlly-sl-strng yl cut; gd resid ring flwr.



Trace Oil on Shakers



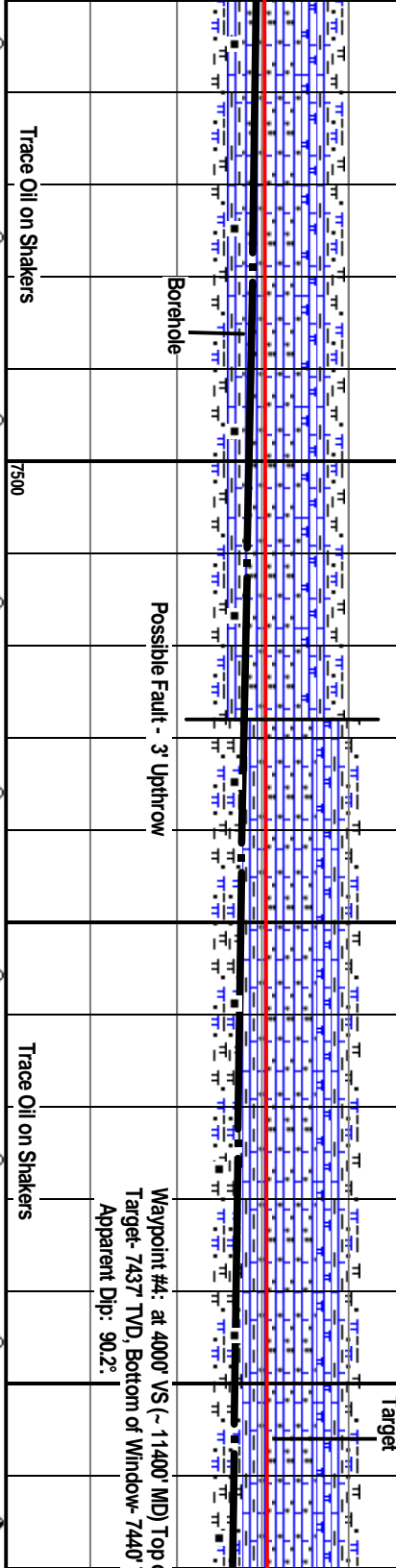
42'	10779' MD Incl 88.2° Az 301.3° TVD 7442.43' VS 3382.05'	7300 TVD	10811' MD Incl 87.7° Az 302.6° TVD 7443.57'	10843' MD Incl 87.8° Az 304.0° TVD 7444.83' VS 3444.57'	10874' MD Incl 88.5° Az 305.5° TVD 7445.83'	10906' MD Incl 88.4° Az 306.8° TVD 7446.69' VS 3506.7'
-----	---	----------	--	---	--	--

ARG CHK (100%) It-m gybrn-m brngy mtld w/ tr
tnlt brn spks & mic lam, frm, blk-y-sb ply, gen
rthy-sl sb wvy, com micro lam/varved, v calc, tr
Calc, wh, amorp & c xln, prob frac fill, ? sply brn
oil sh, sply-ewn dl y/ flr, gd lined string cut, gd
brt y/ resid ring flr.
CARB SH (Tr) v
dk gy, m sft-frm, blk/y, mic gran txt, v carb, sl calc,
no flr, fr mlky-sl string y/ cut, gd resid ring flr.

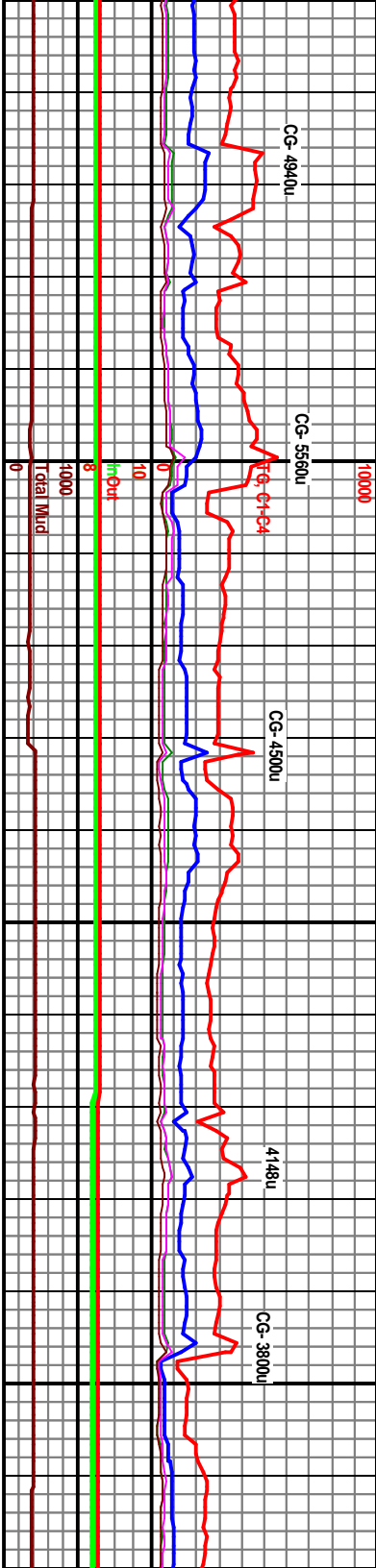
ARG CHK (85%) It-m gybrn-m brngy mtld w/ tr tnlt
brn spks & mic lam, frm, blk-y-sb ply, gen rthy-sl sb
wvy, com micro lam/varved, v calc, tr Calc, wh,
amorp & c xln, prob frac fill, ? sply brn oil sh,
sply-ewn dl y/ flr, gd lined string cut, gd brt y/
resid ring flr.
CARB SH (15%) v
dk gy, m sft-frm, blk/y, mic gran txt, v carb, marly,
sl-m calc, no flr, fr mlky-sl string y/ cut, gd resid
ring flr.

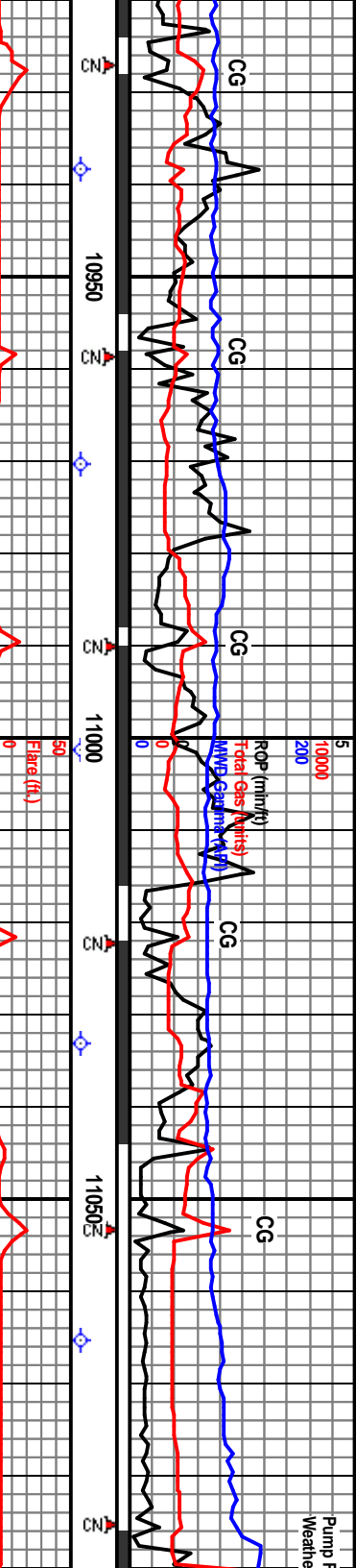
ARG CHK (90%) It-m gybrn-m brngy mtld w/ tr
tnlt brn spks & mic lam, frm, blk-y-sb ply, gen
rthy-sl sb wvy, com micro lam/varved, v calc, tr
Calc, wh, amorp & c xln, prob frac fill, ? sply brn
oil sh, sply-ewn dl y/ flr, gd lined string cut, gd
brt y/ resid ring flr.
CARB SH
(10%) v dk gy, m sft-frm, blk/y, mic gran txt, v carb,
marly, sl-m calc, no flr, fr mlky-sl string y/ cut, gd
resid ring flr.

ARG CHK (80%)
rthy-sbuxy-grny,
mtx, tr-occ dkgy
dkgy stn, sply frm
cut, brt yel read
Fine Cuttings.



Waypoint #4: at 4000' VS (~ 11400' MD) Top
Target- 7437' TVD, Bottom of Window- 7440'
Apparent Dip: 90.2°





10938' MD Incl 89.2° Az 307.9° TVD 7447.36'	10970' MD Incl 89.6° Az 309.5° TVD 7447.7'	7300' TVD 11001' MD Incl 89.9° Az 310.9° TVD 7447.83'	11033' MD Incl 90.3° Az 312.9° TVD 7447.78'	11065' MD Incl 90.6° Az 313.5° TVD 7447.53'	11005' Incl Az 3 TVD VS 3
--	---	---	--	--	---------------------------------------

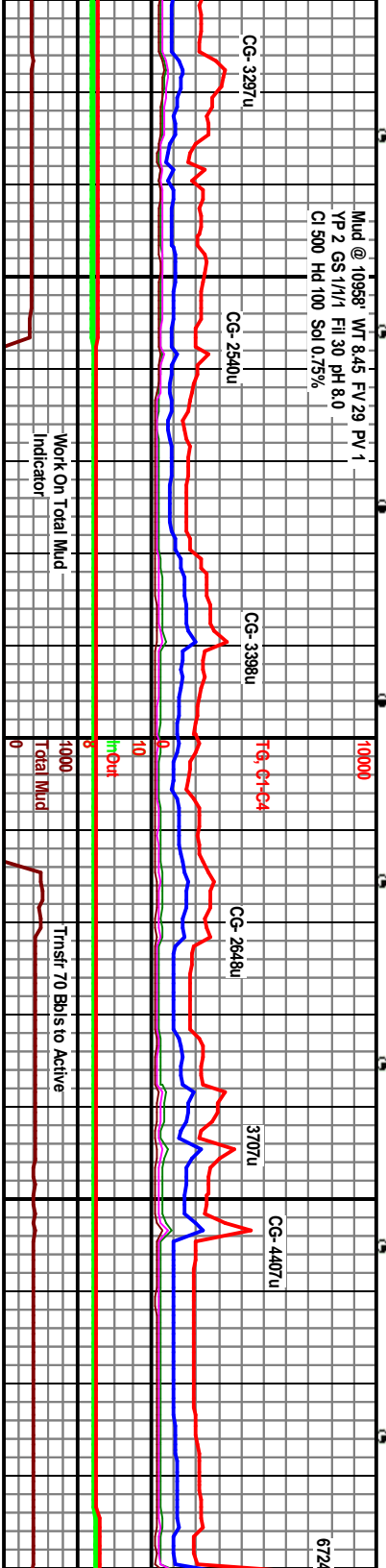
10926-
psi

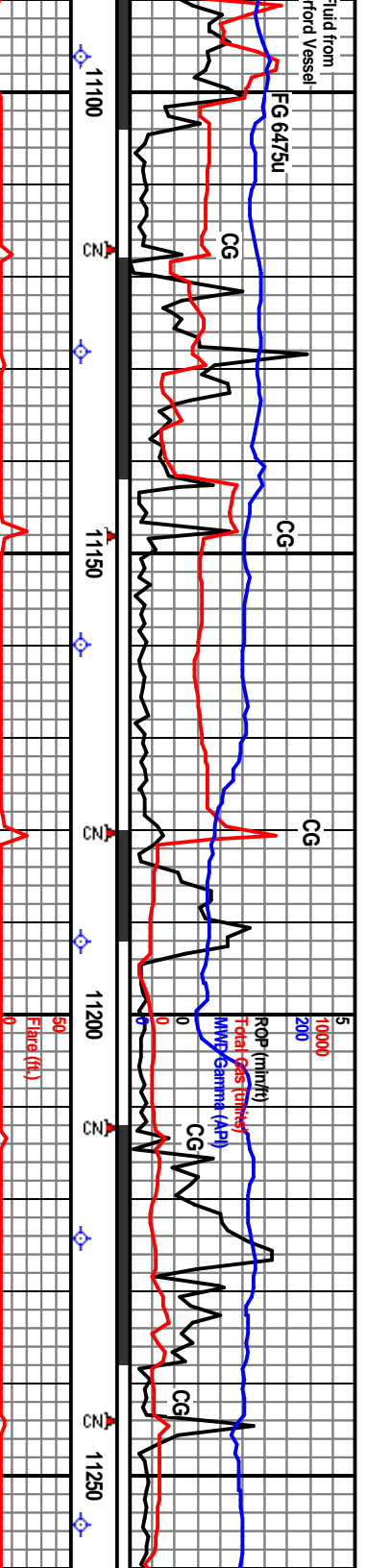
ARG CHK (80%) gylbrn m-tlgy, frm, blkly, rhy-sbwxy-grny gran ip, occ xin Calc, 5-25% cly mtx, r-occ dkgy stks & lams, shy ip, occ patchy dkbrn dkgy sin, spy frt yeild flr, ined strng yeilwh cut brt yeal resd ring. SH (20%) v dk gy, st-frm, blkly-sply, mic gran tk, v carb, sl mny ip, calc, no flr, fr mlky-slow strng yeal cut, gd resd ring. Very Fine Cuttings.

ARG CHK (80%) gylbrn, brn, m-h-dk-gy, tr blk, frm-bric, blkly-sply, rhy-sbwxy-grny tkt, 5-40% cly mtx, shy ip, mny ip, carb ip, occ xin Calc, occ patchy-sply brn sin, frt spy yeild flr, ined strng yeilwh cut, brt-mod yeal resd ring. SH (20%). Very Fine Cuttings.

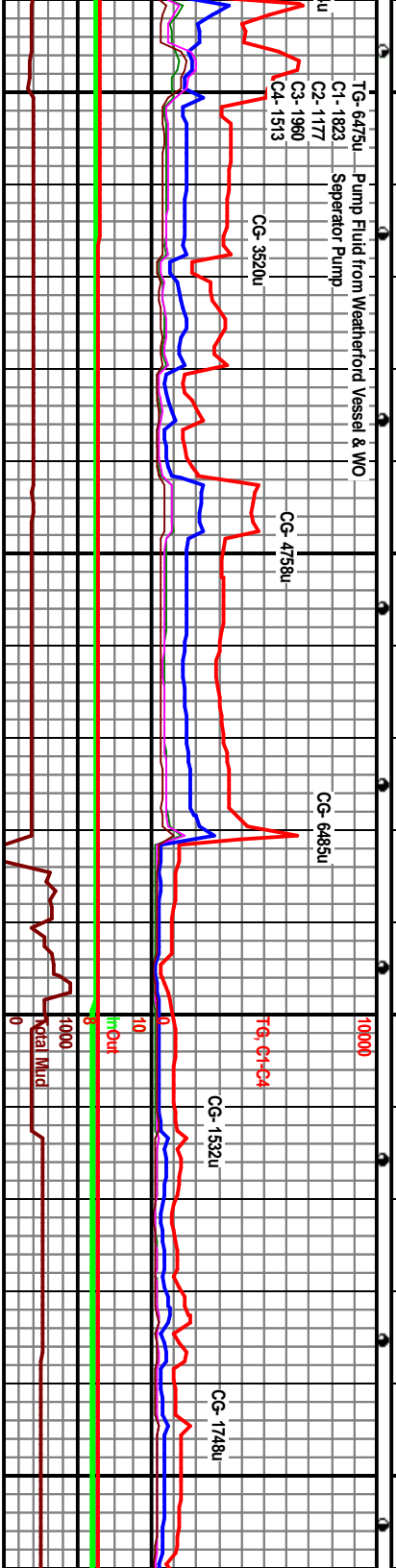
ARG CHK (30%) as before. ARG CHKY MRLL gylbrn tan crm l-mngy, mot, frm, rhy, carb ip, cly mtx, occ xin Calc, frt yeild flr, ined str yeilwh cut, mod-brt yeal resd ring. SH (30%) dk frn-bric, sbblkly-frag, v calc, occ spckly grdy ARG CHK (10%). Very Fine Cuttings.

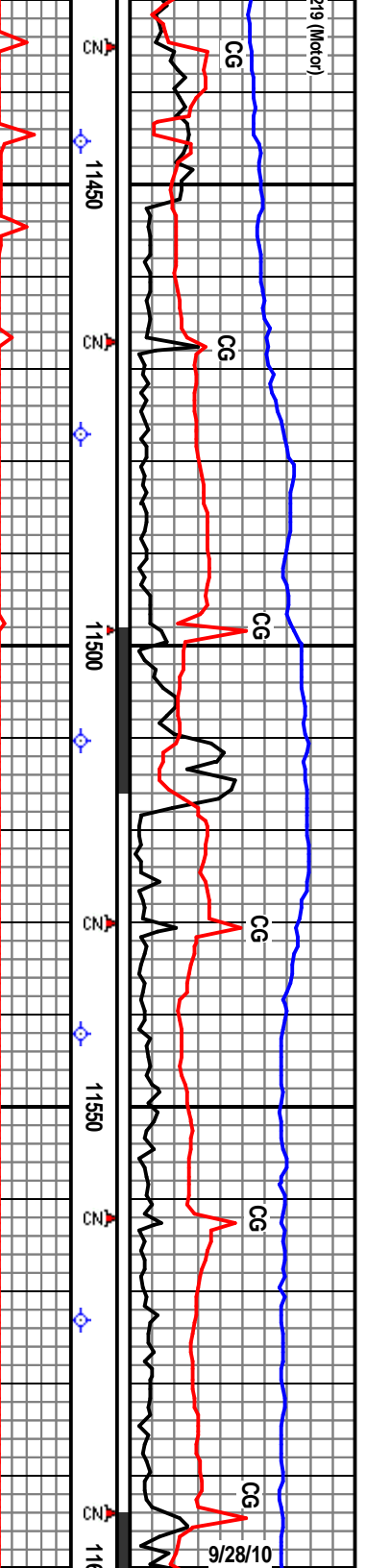
of Window-7434' TVD, TVD.	Trace Oil on Shakers	Trace Oil on Shakers	Trace Oil on Shakers	Trace Oil on Shakers
------------------------------	----------------------	----------------------	----------------------	----------------------





MD	Incl	Az	TVD	VS	SIP	MD	Incl	Az	TVD	VS	MD	Incl	Az	TVD	VS	MD	Incl	Az	TVD	VS	
96' MD	11128'	91.9°	7446.06'	VS 7446.06'	370	11192'	92.2°	315.5°	7443.86'	3823.98	11224'	92.1°	317.2°	7442.66'	3823.98	11255'	92.5°	316.8°	7441.1'		
91.4°	113.6°																				
ST (30%) 20-50% mng key blk. CARB	ARG CHK/ARG CHK Y MRLST (60%) dk-em brn, tan, mlt-dkly, cm, mott ip, frm-brt, blkly, rhy-sbwwy-grny txt, gran ip, 10-40% cly mix, abnt xln Calc. tr Calc fld fracs, shy ip, patchy brn sin, frm-mod yel flor, lined flash-fast string yelwh cuts, brt yel resd ring, CARB CHK (20%) blk, brt, blkly-sbply, grny-mic suc, scat xln calc, arg ip, occ v spry gld flor, slow-fast string yelwh cut, mod-brt yel resd ring, grdg-Carb SH (20%).	ARG CHK/ARG CHK Y MRLST (60%) dk-m brn, tan, mlt-dkly, cm, mott ip, frm-brt, blkly, rhy-sbwwy-grny txt, gran ip, 10-40% cly mix, abnt xln Calc. tr Calc fld fracs, shy ip, patchy brn sin, frm-mod yel flor, lined flash-fast string yelwh cuts, brt yel resd ring, CARB CHK (20%) blk, brt, blkly-sbply, grny-sbwwy-mic suc, scat xln calc, arg ip, occ v spry gld flor, slow-fast string yelwh cut, mod-brt yel resd ring, grdg-Carb SH (20%).	ARG CHK/ARG CHK Y MRLST (60%) gen as before, slight incr in Arg Chk, CARB CHK (20%) . Carb SH (20%).	ARG CHK/ARG CHK Y MRLST (60%) gen as before, slight incr in Arg Chk, CARB CHK (20%) . Carb SH (20%).	ARG CHK/ARG CHK Y MRLST (60%) gen as before, slight incr in Arg Chk, CARB CHK (20%) . Carb SH (20%).	ARG CHK/ARG CHK Y MRLST (60%) gen as before, slight incr in Arg Chk, CARB CHK (20%) . Carb SH (20%).	ARG CHK/ARG CHK Y MRLST (60%) gen as before, slight incr in Arg Chk, CARB CHK (20%) . Carb SH (20%).	ARG CHK/ARG CHK Y MRLST (60%) gen as before, slight incr in Arg Chk, CARB CHK (20%) . Carb SH (20%).	ARG CHK/ARG CHK Y MRLST (60%) gen as before, slight incr in Arg Chk, CARB CHK (20%) . Carb SH (20%).	ARG CHK/ARG CHK Y MRLST (60%) gen as before, slight incr in Arg Chk, CARB CHK (20%) . Carb SH (20%).	ARG CHK/ARG CHK Y MRLST (60%) gen as before, slight incr in Arg Chk, CARB CHK (20%) . Carb SH (20%).	ARG CHK/ARG CHK Y MRLST (60%) gen as before, slight incr in Arg Chk, CARB CHK (20%) . Carb SH (20%).	ARG CHK/ARG CHK Y MRLST (60%) gen as before, slight incr in Arg Chk, CARB CHK (20%) . Carb SH (20%).	ARG CHK/ARG CHK Y MRLST (60%) gen as before, slight incr in Arg Chk, CARB CHK (20%) . Carb SH (20%).	ARG CHK/ARG CHK Y MRLST (60%) gen as before, slight incr in Arg Chk, CARB CHK (20%) . Carb SH (20%).	ARG CHK/ARG CHK Y MRLST (60%) gen as before, slight incr in Arg Chk, CARB CHK (20%) . Carb SH (20%).	ARG CHK/ARG CHK Y MRLST (60%) gen as before, slight incr in Arg Chk, CARB CHK (20%) . Carb SH (20%).	ARG CHK/ARG CHK Y MRLST (60%) gen as before, slight incr in Arg Chk, CARB CHK (20%) . Carb SH (20%).	ARG CHK/ARG CHK Y MRLST (60%) gen as before, slight incr in Arg Chk, CARB CHK (20%) . Carb SH (20%).	ARG CHK/ARG CHK Y MRLST (60%) gen as before, slight incr in Arg Chk, CARB CHK (20%) . Carb SH (20%).	ARG CHK/ARG CHK Y MRLST (60%) gen as before, slight incr in Arg Chk, CARB CHK (20%) . Carb SH (20%).





11450 11500 11550 11600

11446' MD
Incl 91.5°
Az 318.0°
TVD 7431.92'

11477' MD
Incl 91.6°
Az 317.9°
TVD 7431.09'
VS 4076.35

11510' MD
Incl 90.6°
Az 319.2°
TVD 7430.45'

Going Through
Weatherford Gas
Buster

11542' MD
Incl 90.9°
Az 318.9°
TVD 7430.03'
VS 4141.18

11573' MD Incl
90.2° Az
318.4° TVD
7429.74'

mdtd w/ tr tubrn
biky- rthy-sb wxy,
wh, amorp & c xin
sn, fint spy di yl
tr v dky carb Sh pgs, no vis
stin, spy fnt dl yel flor, imed gd string yel cut, brt
yl resid ring.

ARG MARLY CHK (100%) m-dk & bmgv, lp mtld
w/ tr brn mic lamsvares, frm, biky-sply, rhy-
lp sb wxy, lp w/m gran/sucr txt, lp mod-v chky,
occ tan chky incl, tr wh amorp & m xin Calc frac
fill, tr v dk gy carb Sh pgs, no vis sn, spy fnt dl
yel flor, imed gd string yel cut, brt yl resid ring.
Very fine cigs (0.25-0.5mm)

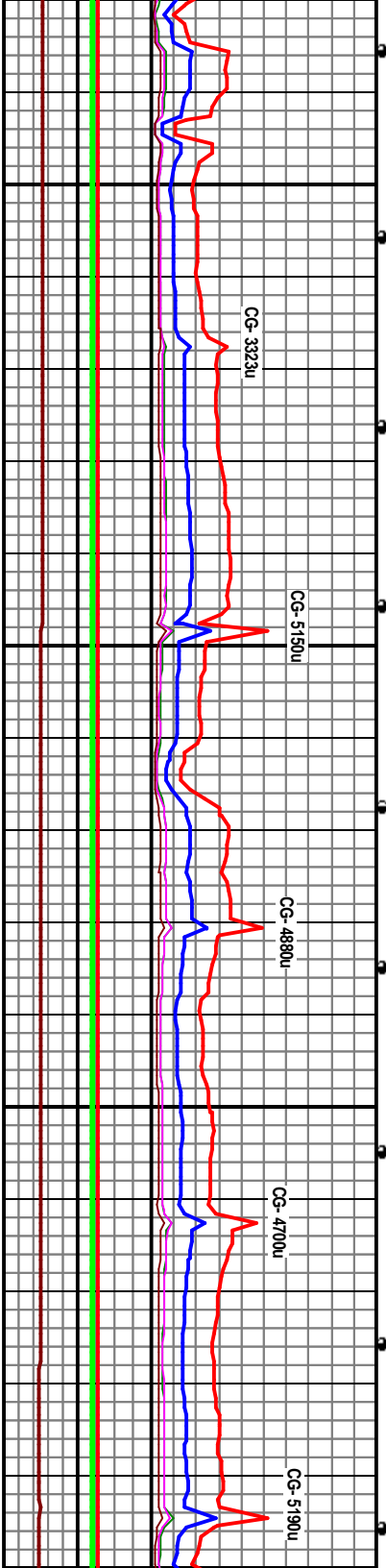
ARG MARLY CHK (100%) pred dk bmgv, sim m
gybm mtld w/ tr brn micro lamsvares, frm,
biky-sply, rhy- lp sb wxy, lp w/m gran/sucr txt,
lp gds to ARG CHKY MRL ST, tr wh amorp & m
xin Calc frac fill, tr v dk gy carb Sh pgs, no vis
stin, spy fnt dl yel flor, imed gd string yel cut, brt
yl resid ring.
Very fine
cigs (0.25-0.5mm)

ARG MARLY CHK (100%) pred dk bmgv, sim m
gybm mtld w/ tr brn micro lamsvares, frm,
biky-sb ply, rhy- lp sb wxy, lp w/ micro gran/suc
txt, lp gds to ARG CHKY MRL ST, tr wh amorp & c
xin Calc frac fill, tr v dk gy carb Sh pgs, no vis
stin, spy fnt dl yel flor, imed gd string yel cut, brt
yl resid ring.
Very fine cigs
(0.25-0.5mm)

Int #: at 5000' VS (~12400' MD) Top of Window- 7436' TVD,
7439' TVD, Bottom of Window- 7442' TVD,
arent Dip: ~89.8°

Slight Trace Oil on Shakers

Slight Trace Oil on Shakers



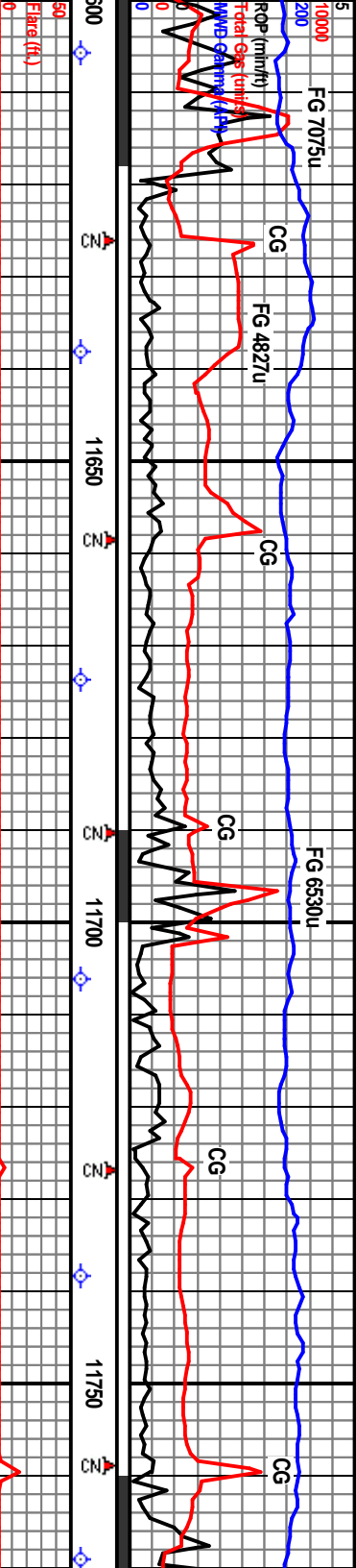
CG-3323u

CG-5150u

CG-4880u

CG-4700u

CG-5190u



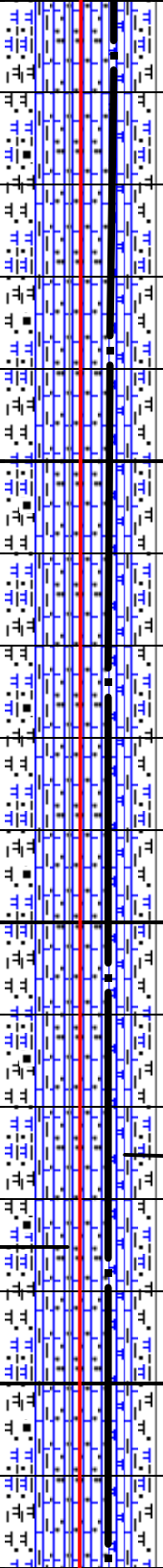
7300 TVD	11638' MID	11674' MID	11706' MID	11738' MID	11766'
Incl 89.2°	Incl 88.8°	Incl 89.5°	Incl 90.4°	Incl 90.1°	Incl 8
Az 318.9°	Az 319.8°	Az 320.1°	Az 320.0°	Az 320.8°	Az 32
TVD 7429.91'	TVD 7430.47'	TVD 7431.0' VS	TVD 7431.03'	TVD 7430.89'	TVD
VS 4205.03'		4272.77'		VS 4336.48'	
SIP- 330 psi			@ 11701' Well Flowed 50 Bbl Gain; SI & Circ Out thru Weatherford		SIP- 360 psi

ARG MARLY CHK (100%) pred dk brngy, sim m gybrn mtld w/ tr brn micro lamst/ varves, frm, bily-sb ply, rthy- ip sb wxy, ip w/ micro gran/sucr txt, ip gds to ARG CHKY MRLST; tr wh amorp & c xin Calc frac fill, tr v dk gy carb Sh pigs, no vis sin, spy brt yel flor, lined gd string yel cul, brt yi resd ring.

ARG MARLY CHK (100%) no vis lith change: pred dk brngy, sim m gybrn mtld w/ tr brn micro lamst/ varves, frm, bily-sb ply, rthy- ip sb wxy, ip w/ micro gran/sucr txt, ip gds to ARG CHKY MRLST; tr wh amorp & c xin Calc frac fill, tr v dk gy carb Sh pigs, no vis sin, spy brt yel flor, lined gd string yel cul, brt yi resd ring.
Very fine cngs (0.25-0.5mm)

ARG MRLST (70%) m-dk gy, dk gybrn, coc lgy, tan, frm, bily, rthy-gmry, sbckly ip, shy ip / dkgy Sh pigs, rr xin Calc & mic Pyr, NSO, even-sdy int yeloid flor, lined string-flash yelwh cut, brt yel resd ring. SH (30%) dkgy blk, frm, bily-sply-sply-reg, rthy-gmry, v-mod calc, mod-v carb, petrolif ip, slow string yelwh cut, wk-mod resd ring. Extremely Fine Cuttings.

ARG MRLST (70%) tan, frm, bily, rthy-dkgy Sh pigs, rr xin odor, no vis sin, , string-flash yelwh dkgy blk, frm, bily-v-mod calc, mod-v yelwh cut, wk-mod Cuttings.

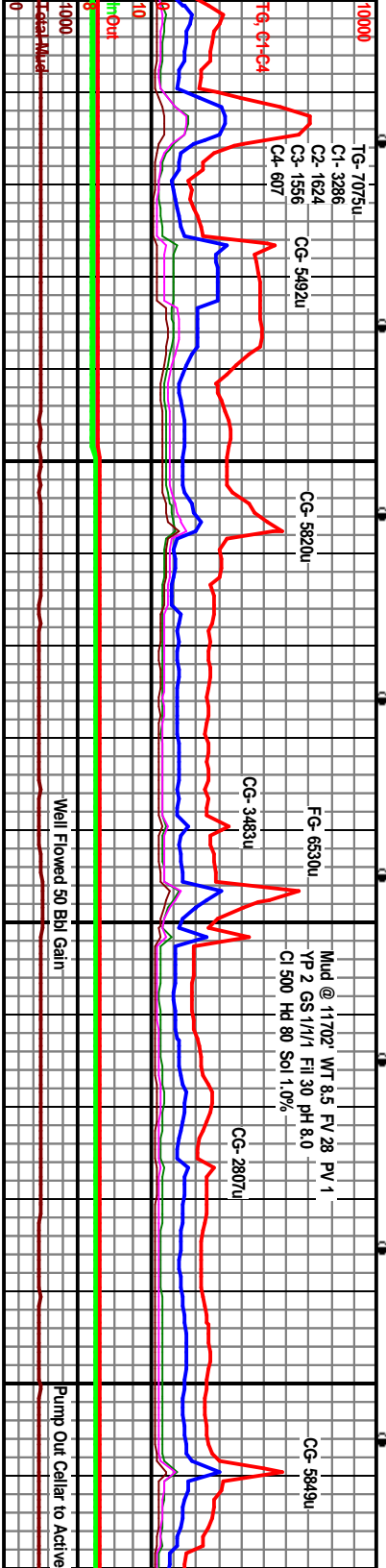


Trace Oil on Shakers

Borehole

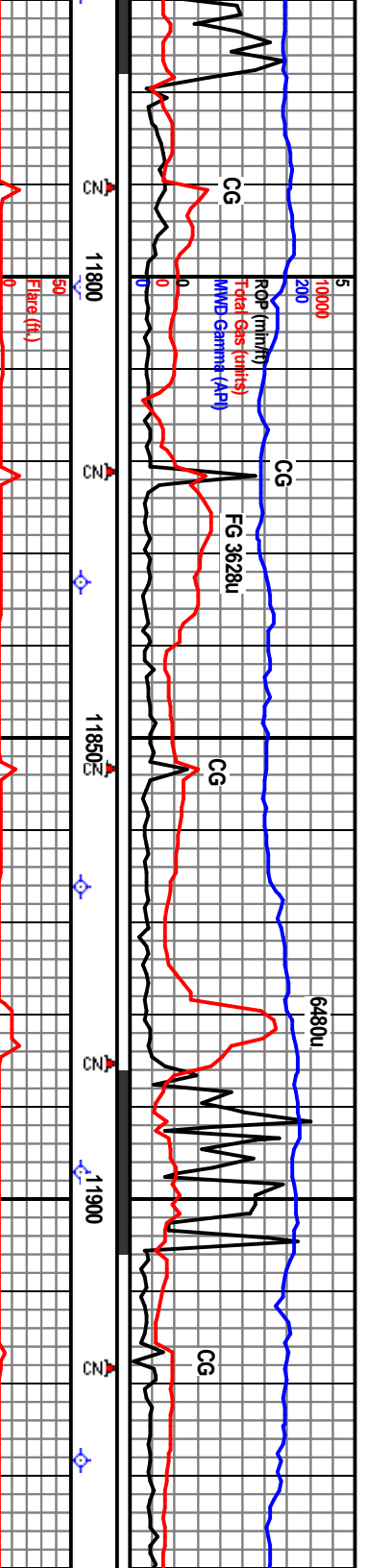
Target

Trace Oil



Well Flowed 50 Bbl Gain

Pump Out Callar to Active



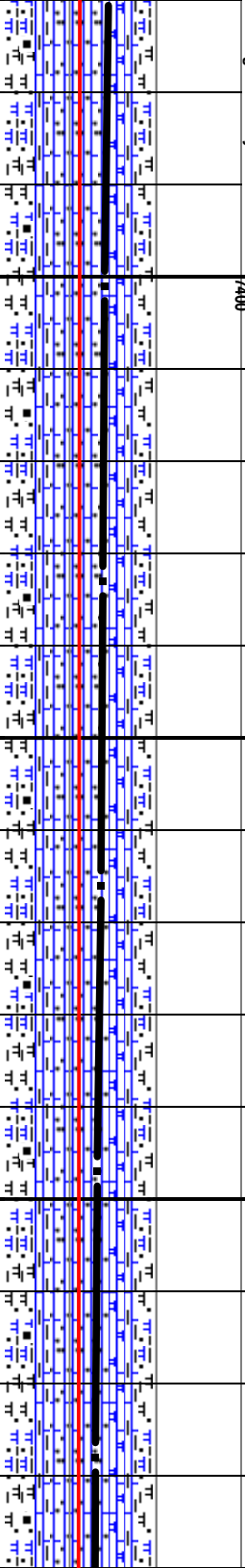
7300 TVD 11801' MD Incl 88.9° Az 320.6° TVD 7431.72' VS 4399.13'	11833' MD Incl 89.0° Az 319.9° TVD 7432.31' SIP- 400 psi	11866' MD Incl 89.0° Az 320.1° TVD 7432.88' VS 4463.83'	11897' MD Incl 89.0° Az 320.9° TVD 7433.42'	11928' MD Incl 89.2° Az 321.5° TVD 7433.91' VS 4525.47'
---	--	---	--	---

mdk gy, dk gybrn, occ lgy, grny, stochly- chly ip, shy ip / n Calc & mic Pyr, fnt petro even-spy fnt, yeild flr, med cut, brt yel read ring, SH (30%) spily- sply- (reg, rthy-grny, carb, petrolif ip, slow string read ring. Extremely Fine

ARG MRLST (60%) gen as before, 30-50% cly mx, occ brn gy siks, tr patchy brn sn. ARG CHK (20%) m-lgy, gy/brn brn, frm, blkly, grny-rthy, occ xln Calc, scat brn sn, spy yeild flr, med string cut, brt yel read ring, SH (20%), Very Fine Cuttings.

ARG MRLST (70%) m-dkgy, mot m-lk-dk gy, dk gybrn, frm, blkly-sply, scat carb specs, 30-50% cly mx, tr patchy brn sn, tr v fnt spy yeild flr, med flash-fast string yelwh cut, brt yel read ring. ARG CHK (10%) as above, 10-25% cly, SH (20%) dk-v-dkgy, frm, spily-sply, grny-rthy, mod-v-calc, carb ip, NSOF, slow string cut. Very Fine Cuttings.

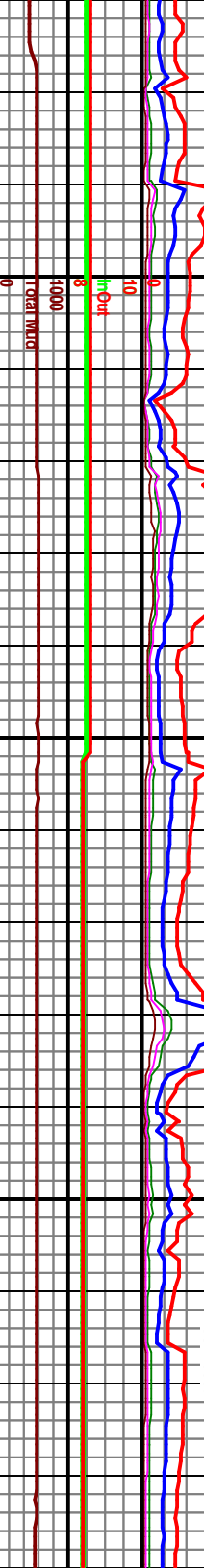
ARG MRLST (60%) as before, ARG CHK (30%) gy, gybrn brn, mot ip, frm-brt, rthy-slowxy-g dkgy brn siks & lams, 5-25% cly mx, scat lss fnt petro odor, occ fnt spy yeild flr, fast s cut, mod read ring, SH (10%) as before. Ver Cuttings.



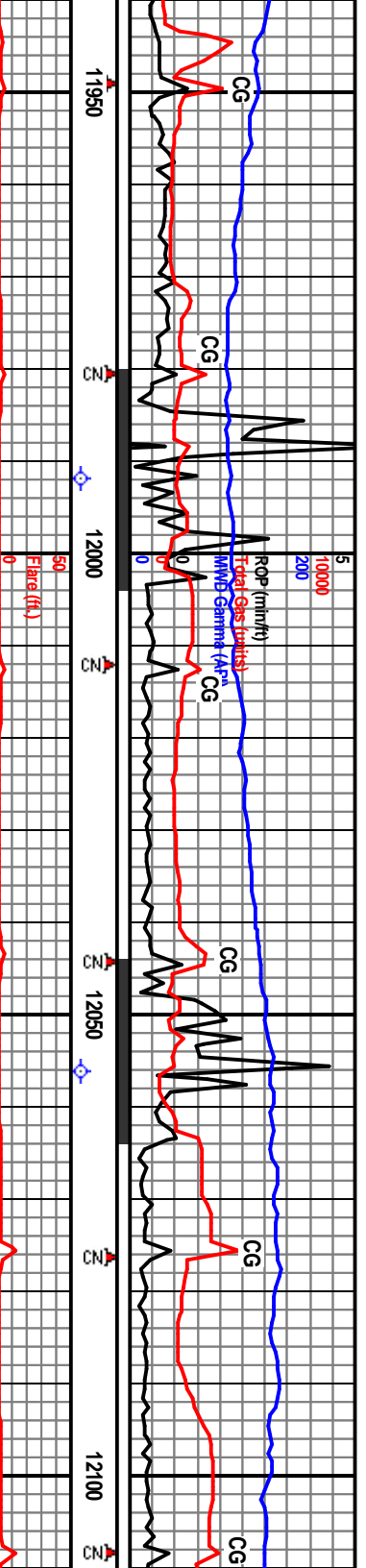
l on Shakers

Trace Oil on Shakers

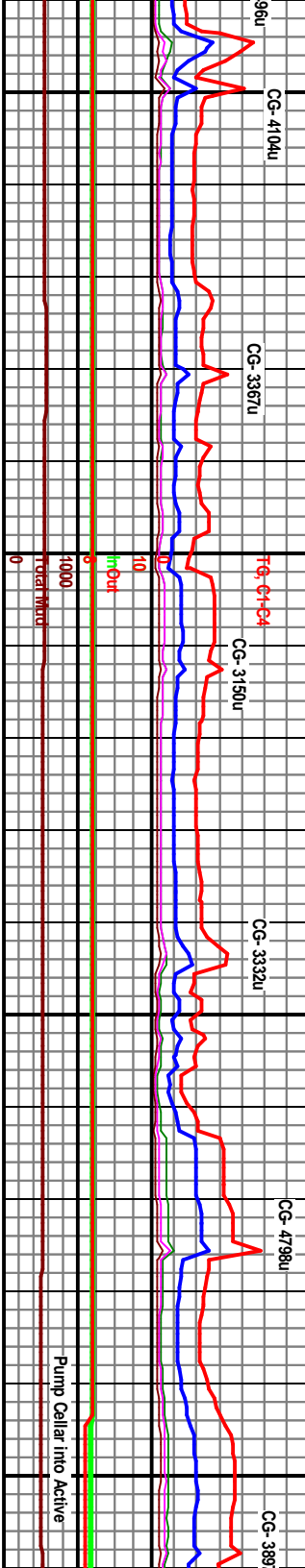
CG-3444u	CG-3378u	CG-3008u	CG-1905u
----------	----------	----------	----------



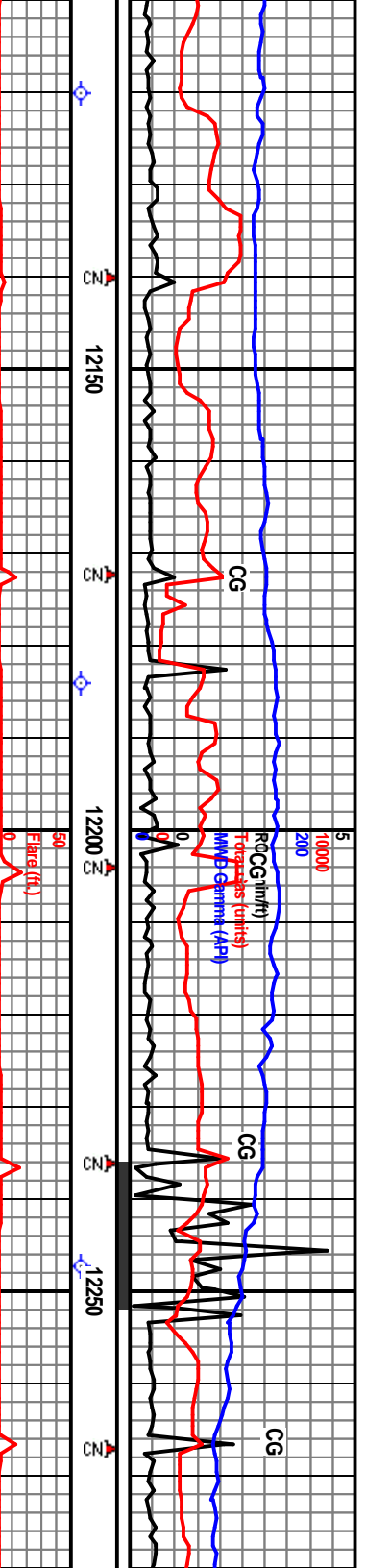
Waypoint #: at 5000' VS
Target- 7439' TVD, Bottom
Apparent Dip: ~89.8°



SIP-340 psi	Start 60' Surveys	11992' MD Incl 90.0° Az 322.8° TVD 7434.36' VS 4588.94'	7300 TVD	
	ARG CHK (70%) m-h-dk gy, gybrn, brn, motf ip, brt, blk, rthy-gmly-sbwxy tx, dkgy slks & lams com, 5-25% clay mtk, occ xln Calc, tr shy pfgs, fr petro odor, patchy brn o sin, even fat-mod yelgid flr, lined fast string yelwh cut, brt yel resd ring. ARG MRLST (30%).		7400	
	ARG CHK (70%) m-h-dk gy, gybrn, brn, motf ip, brt, blk, rthy-gmly-sbwxy tx, dkgy slks & lams com, 5-25% clay mtk, occ xln Calc, tr shy pfgs, fr petro odor, patchy brn o sin, even fat-mod yelgid flr, lined fast string yelwh cut, brt yel resd ring. ARG MRLST (30%).		7500	
	ARG CHK (50%) m-h-dk gy, gybrn, brn, motf ip, brt, blk, rthy-gmly-sbwxy tx, dkgy slks & lams com, 5-25% clay mtk, occ xln Calc, tr shy pfgs, fr petro odor, patchy brn o sin, even fat-mod yelgid flr, lined fast string yelwh cut, brt yel resd ring. ARG MRLST/ARG MARLY CHK (30%).		7500	
	Trace Oil on Shakers		7500	
	Trace Oil on Shakers		7500	
	Pump Cellar into Active		10000	



SIP-340 psi	Start 60' Surveys	11992' MD Incl 90.0° Az 322.8° TVD 7434.36' VS 4588.94'	7300 TVD	
	ARG CHK (70%) m-h-dk gy, gybrn, brn, motf ip, brt, blk, rthy-gmly-sbwxy tx, dkgy slks & lams com, 5-25% clay mtk, occ xln Calc, tr shy pfgs, fr petro odor, patchy brn o sin, even fat-mod yelgid flr, lined fast string yelwh cut, brt yel resd ring. ARG MRLST (30%).		7400	
	ARG CHK (70%) m-h-dk gy, gybrn, brn, motf ip, brt, blk, rthy-gmly-sbwxy tx, dkgy slks & lams com, 5-25% clay mtk, occ xln Calc, tr shy pfgs, fr petro odor, patchy brn o sin, even fat-mod yelgid flr, lined fast string yelwh cut, brt yel resd ring. ARG MRLST (30%).		7500	
	ARG CHK (50%) m-h-dk gy, gybrn, brn, motf ip, brt, blk, rthy-gmly-sbwxy tx, dkgy slks & lams com, 5-25% clay mtk, occ xln Calc, tr shy pfgs, fr petro odor, patchy brn o sin, even fat-mod yelgid flr, lined fast string yelwh cut, brt yel resd ring. ARG MRLST/ARG MARLY CHK (30%).		7500	
	Trace Oil on Shakers		7500	
	Trace Oil on Shakers		7500	
	Pump Cellar into Active		10000	



12120' MD
Incl 89.7°
Az 325.1°
TVD 7434.52'
VS 4715.26'

12184' MD
Incl 90.1°
Az 324.7°
TVD 7434.64'
VS 4778.26'

12247' MD
Incl 89.0°
Az 325.1°
TVD 7435.13'
VS 4840.28'

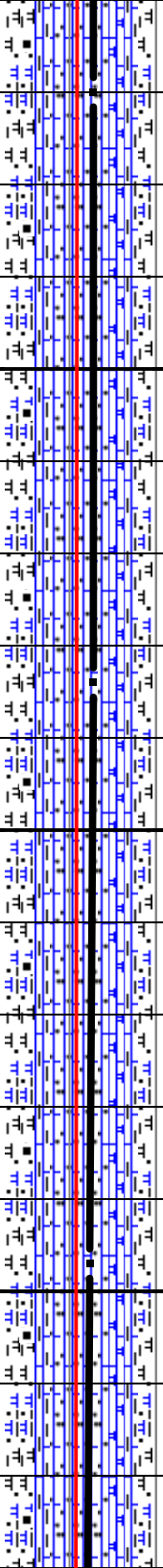
SIP- 370 psi

CHK (70%) mott m-tgy, gybrn, brt, blk, rhy-sbwxy txt, tr mic suc, gran ip, 5-30% cly dckorn dkgy stks & lams, xln Calc com m m xls), occ frac fld, frt petro odor, brn sn, sply yeild flr, imed flash cut, brt ring. ARG MARLY CHK (30%) gybrn, y, frm, bily, 30-60% cly, patchy brn blk sn, tr vel flr, imed fst string cut. Very Fine gss.

ARG CHK (60%) gybrn, m-dk-tgy, frm-brt, blk, gmy-rhy-sbwxy-mic suc txt, gran ip, 5-30% cly rmx, occ dckorn dkgy stks & lams, occ xln Calc, tr frac fld, frt petro odor, patchy brn sn, sply yeild flr, imed flash cut, brt vel read ring. ARG MARLY CHK (40%) gybrn, m-dkgy, frm, bily, 30-60% cly, patchy brn blk sn, sply frt vel flr, imed fst string cut. Very Fine Cuttings.

ARG CHK (60%) m-dk-t-gy, dkgy/brn, brn, mott ip, brt-frm, rhy-sbwxy-gmy txt, tr mic suc, 10-40% cly mx, occ dkgy brn stks & lams, occ lee xln Calc, tr Calc fld mic frags, frt petro odor, tr sply blk dckorn sn, sply yeild flr, imed string yelwh cut, brt read ring. ARG MARLY CHK (40%) m-dkgy, dckorn, brn, frm, bily-sply, rhy-sbwxy, 30-60% cly, tr xln Calc, no vis sn, sply gld flr, fast string yelwh cut. Very Fine Cuttings.

ARG CHK (70%) gybrn, m-l-dk rhy-sbwxy-gmy-mic suc txt, 5-dkgy brn stks & lams, inor lee xln mic frags, frt petro odor, tr sply sply yeild flr, imed string yelwh ring. ARG MARLY CHK (40%) frm, bily-sply, rhy-sbwxy, 30-60% cly, no vis sn, sply gld flr, fast string yelwh cut. Very Fine Cuttings.



Trace Oil on Shakers

Trace Oil on Shaker

TG-4938u
C1-2683
C2-977
C3-789
C4-488

CG-4158u

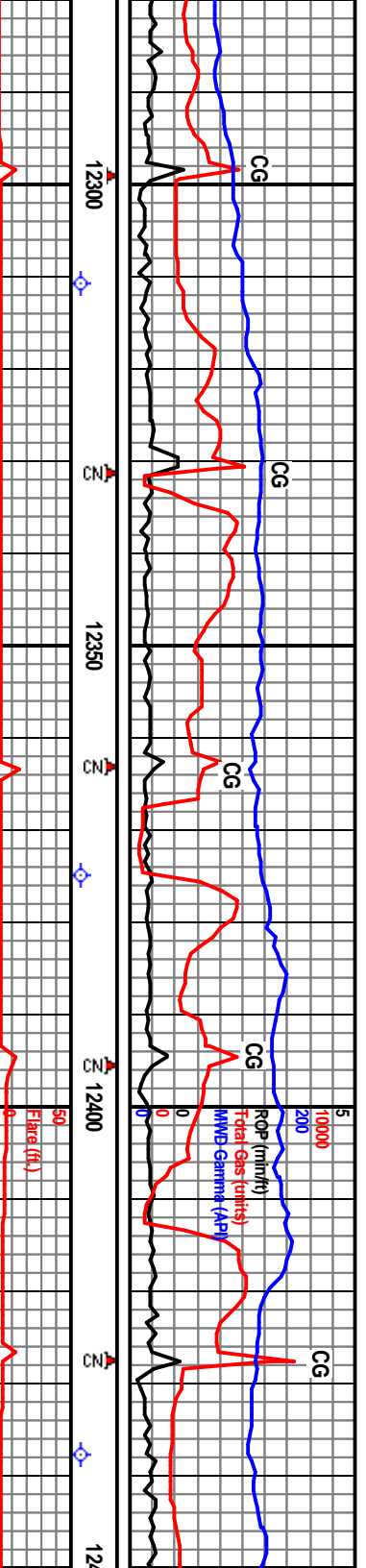
CG-4752u

CG-4371u

CG-3188u

CG-4454

Trnsfr 80 Bls to Active



12311' MD
Incl 88.7°
Az 325.8°
TVD 7436.42'
VS 4903.16'

12375' MD
Incl 88.9° Az
325.7° TVD
7437.81' VS
4965.97'

12438' MD
Incl 89.1°
Az 325.7°
TVD 7438.97'
VS 5027.82'

ARG CHK (75%) pred m gy/brn- sm dk brn gy, frm, blk-ys pty, rthy & sb wxy, com mtld w/ir brn Incls & micro lamn/ varves, no vis oil sn, frt spy dl y/ flor, gd lined string cut, gd brt y/ resid ring flor.

ARG MRL Y CHK (25%) v dk gy, m frm, blk-ys pty, gran/sucr txt, blk oil sn, no flor, gd lined brt y/ cut & gd brt y/ resid ring flor.

ARG CHK (75%) pred m gy/brn- sm dkr brn gy, frm, blk-ys pty, rthy & sb wxy, com mtld w/ir brn Incls & micro lamn/ varves, no vis oil sn, frt spy dl y/ flor, gd lined string cut, gd brt y/ resid ring flor.

ARG MRL Y CHK (25%) v dk gy, m frm, blk-ys pty, gran/sucr txt, blk oil sn, no flor, gd lined brt y/ cut & gd brt y/ resid ring flor. Very fine cigs (0.2-0.75 mm)

ARG CHK (95%) l-m gy/brn, frm, blk-ys pty, rthy & sb wxy, com mtld w/ir brn Incls & micro lamn/ varves, tr Calc, wh, amorp & c xln trac fill; tr spy lt brn oil sn, frt spy-even dl y/ flor, gd lined string cut, gd brt y/ resid ring flor.

ARG MRL Y CHK (5%) v dk gy, m frm, blk-ys pty, gran/sucr txt, blk oil sn, no flor, gd lined brt y/ cut & gd brt y/ resid ring flor. Very fine cigs (0.2-0.75 mm)

Waypoint #5: at 5000' VS (~ 12400' MD) Top of Window- 7436' TVD,
Target- 7439' TVD, Bottom of Window- 7442' TVD,
Apparent Dip: ~89.8°

Trace Oil on Shakers

CG- 4851u

CG- 5064u

CG- 4006u

CG- 4782u

CG- 5124u

CG- 7285u

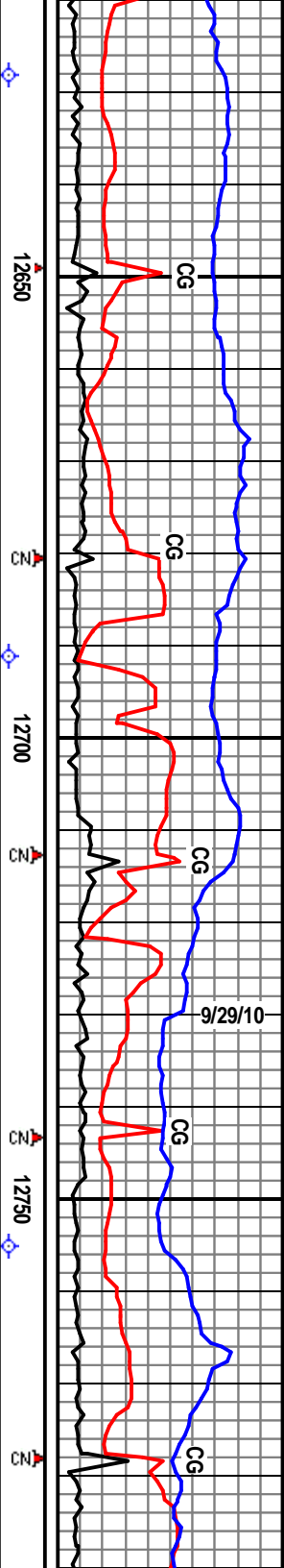
Mud @ 12395' WT 8.4+ FV 28 PV 1
YP 2 GS 1/1/1 Fl 30 pH 7.7
Cl 450 Hd 80 Sol 0.75%

TG- 4722u
C1- 2556 C2- 930
C3- 740 C4- 495

TG- 5124u
C1- 2593 C2- 986
C3- 898 C4- 645

Pump Out Cellar

7500
10000
10000
10000



12628' MID
Incl 89.6°
Az 325.8°
TVD 7441.68'
VS 5214.54'

75% v dk gy, m frm, sb pily-ip
bly, ip pelletal, hi cly/arg cont, blk
inmed brt yi string cut & gd brt
ARG CHK (25%) It-m gybrn, frm,
& sb wxy, com mtld w/ tr brn
oil
res, micro varved, tr spy It brn oil
or. dl yi flor, gd imed string cut, gd

12691' MID
Incl 89.8°
Az 325.1°
TVD 7442.01'
VS 5276.45'

ARG MRL Y CHK (75%) v dk gy, m frm, sb pily-ip
bly, micro gran/suc txt, ip pelletal, hi cly/arg
cont, blk oil sn, no flor, gd inmed brt yi string cut
& gd brt yi resid ring flor.
ARG CHK (25%) It-m gybrn, frm, bly-sb pily, rthy
& sb wxy, com mtld w/ tr brn inclus & micro
lams, micro varved, tr spy It brn oil sn, fnt
spty-ewan dl yi flor, gd imed string cut, gd brt yi
resid ring flor.

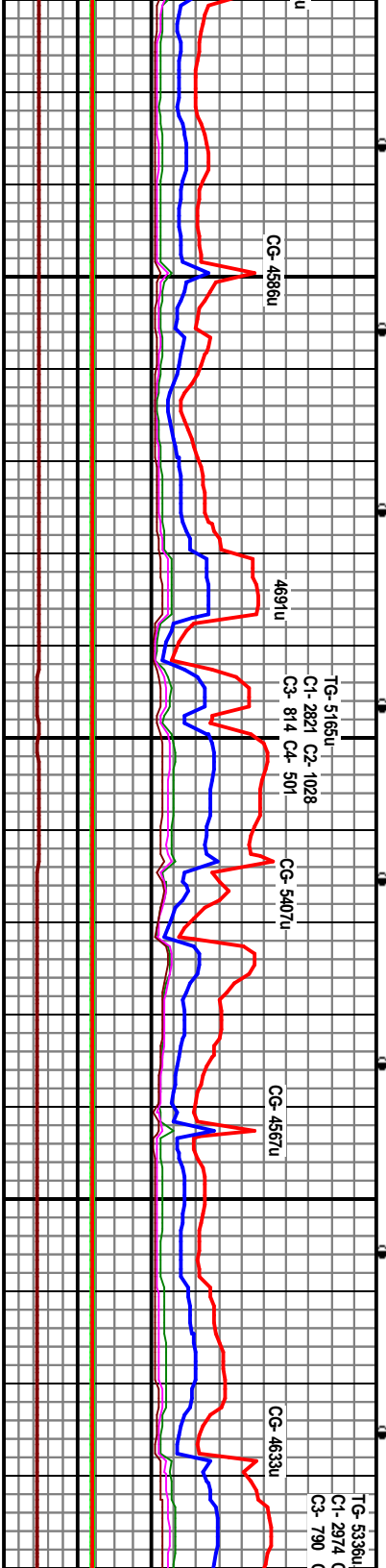
12755' MID
Incl 89.7°
Az 325.7°
TVD 7442.29'
VS 5339.35'

ARG MRL Y CHK (60%) v dk gy, m frm, sb pily-ip
bly, micro gran/suc txt, ip pelletal, hi cly/arg
cont, blk oil sn, no flor, gd inmed brt yi string cut
& gd brt yi resid ring flor.
ARG CHK (20%) It-m gybrn, frm, bly-sb pily, rthy
& sb wxy, com mtld w/ tr brn inclus & micro lams,
micro varved, tr spy It brn oil sn, fnt spty-ewan dl
yi flor, gd imed string cut, gd brt yi resid ring flor.

ARG MRL Y CHK (60%) v dk gy, m frm, sb pily-ip
bly, micro gran/suc txt, ip pelletal, hi cly/arg
cont, blk oil sn, no flor, gd inmed brt yi string
& gd brt yi resid ring flor.
ARG CHK (40%) It-m gybrn, frm, bly-sb pily, rth
sb wxy, com mtld w/ tr brn inclus & micro lams
micro varved, tr spy It brn oil sn, fnt spty-ewan
yi flor, gd imed string cut, gd brt yi resid ring flr
Very fine cigs (0.2-0.4 mm)

Trace Oil on Shakers

Trace Oil on Shakers



CG-4586u

4691u

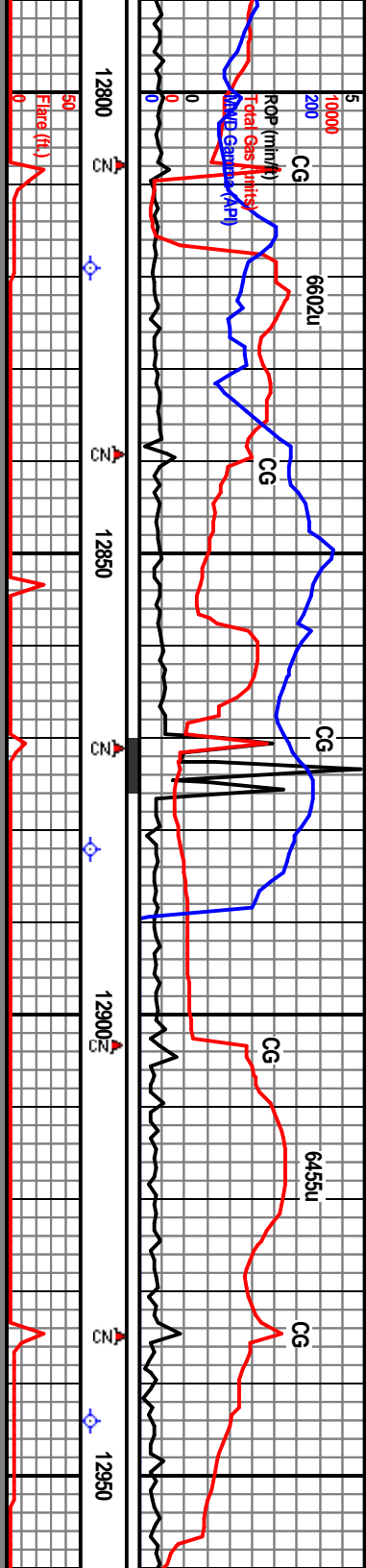
TG-5165u
C1-2821 C2-1028
C3- 814 C4- 501

CG-5407u

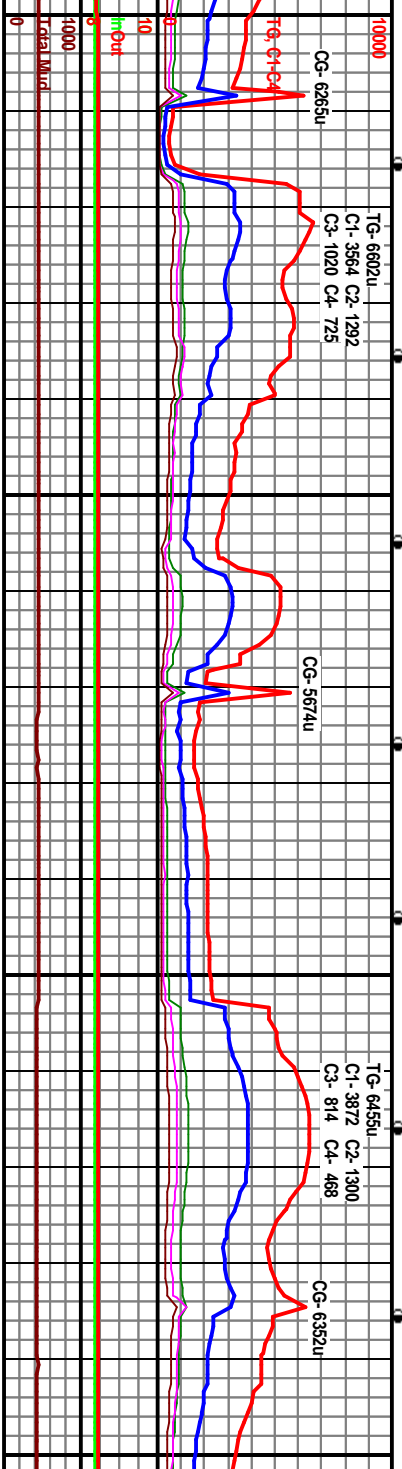
CG-4567u

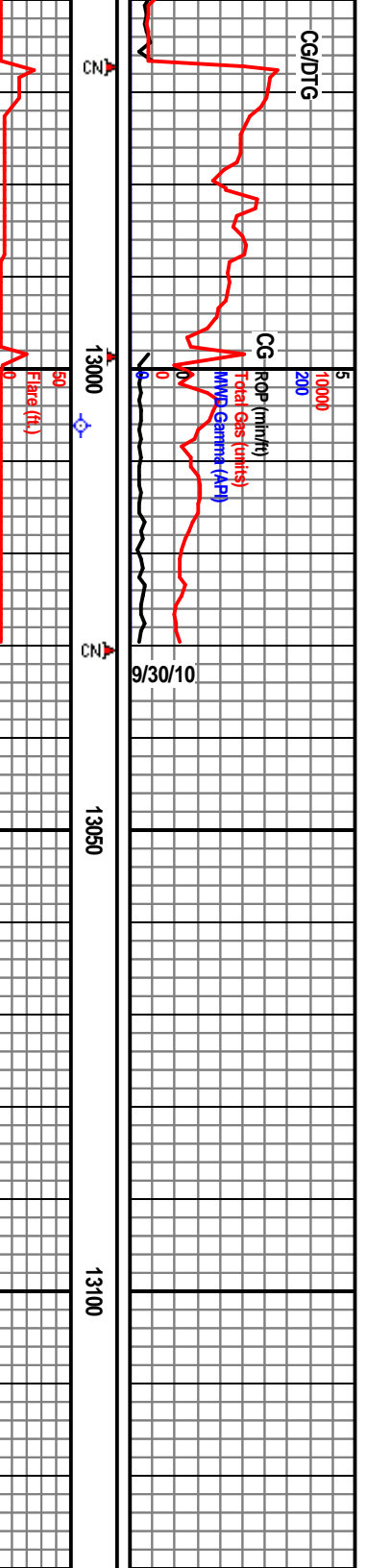
CG-4633u

TG-5336u
C1- 2974 C
C3- 790 C



7300 TVD	12819' MD Incl 89.3° Az 325.6° TVD 7442.84' VS 5402.20'					
SIP- 324 psi	ARG MRL Y CHK (75%) v dk gy, m frm, sb ply-ip biky, micro gran/suc txt, ip pelletal, hi cly/ang cont, blk oil sn, no flor, gd linned brt yf string cut & gd brt yf resid ring flor. ARG CHK (25%) l-km gybrn, frm, biky-sb ply, rthy & sb wxy, com mttd w/ tr brn inclus & micro lams, micro varved, tr sply lt brn oil sn, fr sply-even dl yf flor, gd lmed string cut, gd brt yf resid ring flor.					
	12862' MD Incl 88.8° Az 324.6° TVD 7443.89' VS 5464.17'					
SIP- 300 psi	ARG MRL Y CHK (60%) v dk gy, m frm, sb ply-ip biky, micro gran/suc txt, ip pelletal, hi cly/ang cont, blk oil sn, no flor, gd linned brt yf string cut & gd brt yf resid ring flor. ARG CHK (40%) l-km gybrn, frm, biky-sb ply, rthy & sb wxy, com mttd w/ tr brn inclus & micro lams, micro varved, sply lt brn oil sn, fr sply-even dl-brt yf flor, gd lmed string yf cut, gd brt yf resid ring flor. Very fine cigs (0.2-0.4 mm)					
	12882' MD Incl 88.8° Az 324.6° TVD 7443.89' VS					
Mud @ 12990' WT 8.45 FV 28 PV 1 YP 2 GS 1/1/1 Fil 30 PH 7.5 Cl 500 Hd 80 Sol 0.77%	ARG CHK (60%) l-km gybrn, frm, biky-sb ply, rthy & sb wxy, com mttd w/ tr brn inclus & micro lams, micro varved, sply lt brn oil sn, gd sply-even dl-brt yf flor, gd lmed string yf cut, gd brt yf resid ring flor. ARG MRL Y CHK (40%) v dk gy, m frm, sb ply-ip biky, micro gran/suc txt, tr pelletal txt, hi cly/ang cont, blk oil sn/sat, no flor, gd linned brt yf string cut & gd hvy brt yf resid ring flor.					





Lay Down 3 Jts D.P. & Replace Rotating Head @ 12,967'. Inadvertently Drilled to 12,998' while washing to Bottom, No ROP Record, Gas Approximated. MWD Tools not Functioning (Switch).

7300 TVD	AR G CHK (80%) v gypm, bm, m-lt-dk gy, fm-brit, blk, slow-rthy-grny, tr mic, sucr, 5-25% dy mix, occ dkgy brn sils & lamr, tr-occ lse xin Calc & Calc fld fracs, fnt petro odor, patchy brn str, fnt yeild fld, imed fast strmg yelwn cut, brt yel resd ring.	Reached TD of 13,030' MD at 13:30 9/29/10.	
7400	CARB CHK (10%) v dkgy, blk, brit, mic sucr, tr xin Calc, v carb, hvy blk dkwm str, occ spy fnt yeild fld, imed fast strmg yelwn cut, brt yel resd ring. SH (10%) dk-v dkgy, blk, fm, sbply-sply-pty-irg, rthy-grny, mod-v calc, v carb lp, slow strmg yelwn cut. Very Fine Cuttings.	Bit #5 Cut 5343' in 71 Hrs., Circ. & Spot 50 Bbls 12.2# Kill Mud, TOH & LD Directional/MWD Tools, PU Reamer, TH	
7500		Mud @ 13030' WT 8.5 FV 32 PV 2 YP 4 GS 1/1/1 Fil 30 pH 7.5 CI 500 Hd 80 Sol 1.22%	

Thank You!
 Mike Dodge at
 Robert No
 Goolsby Brothers
 Associate

