



**CEMENT BOND  
GAMMA RAY  
CCL LOG**

**Company EOG RESOURCES**

Well: ELSIE 7-34H  
Field: HEREFORD  
County: WELD  
State: CO

Company: **EOG RESOURCES**  
Well: **ELSIE 7-34H**  
Field: **HEREFORD**  
County: **WELD**  
State: **CO**

Location: \_\_\_\_\_ API #: \_\_\_\_\_  
SEC: \_\_\_\_\_ TWP: \_\_\_\_\_ RGE: \_\_\_\_\_  
Permanent Datum: GROUND LEVEL Elevation  
Log Measured From: K.B. OF 22'  
Drilling Measured From: KELLY BUSHING  
Elevation: K.B. \_\_\_\_\_  
D.F. \_\_\_\_\_  
G.L. \_\_\_\_\_

Date of Service	07-OCTOBER-10
Run Number	ONE
Depth Driller or PBTD	6807'
Depth Logger	6776'
Bottom Log Interval	6775'
Top Log Interval	1300'
Open Hole Size	NA
Type Fluid	WATER
Fluid Level	SURFACE
Fluid Density	NA
Max. Recorded Temperature	193.4 DEG. F.
Max. Wellhead Pressure	0 PSI
Wellhead Connection	7 1/16" 5K FLANGE
Estimated Cement Top	SEE LOG
Unit Number	P-57
Wireline Size	7/32"
Location	ROCK SPRINGS
Recorded By	N. ROSS
Witnessed By	MR. RICH FLORES
Tubing Record	Size: NA W/Ft: _____ Top: _____ Bottom: _____
Surface Casing	9.625" 36# SURFACE
Production Casing	7" 23# SURFACE
Liner Record	NA

<<< Fold Here >>>

All interpretations are opinions based on inferences from electrical or other measurements and Perf-O-Log cannot and does not guarantee the accuracy or correctness of any interpretation, and Perf-O-Log will not, except in the case of gross or willful negligence on our part, be liable or responsible for any loss, costs, damages, or expenses incurred or sustained by anyone resulting from any interpretation made by any of our officers, agents or employees. These interpretations are also subject to Perf-O-Log's general terms and conditions set out in our current Price Schedule.

**Comments**

**LOG DEPTHS BASED ON WIRELINE MEASUREMENTS.**

**THANK YOU FOR USING PERF-O-LOG**

<b>Your Perf-O-Log Crew</b>	<b>Tool Data - Services</b>	<b>Serial Number</b>
Engineer: NICK ROSS Operator: SEAN RAUERT Operator: RON GRANT Operator: CHUCK BRYAN	CCL SCBL GR	

Company	Offset (ft)	Depth (ft)	Description	Log (#)	CD (in)	Wt (lb)
---------	-------------	------------	-------------	---------	---------	---------

Sensor	Offset (ft)	Schematic	Description	Len (ft)	OD (In)	Wt (lb)
CCL	19.38		CCL-MTEKCOHT (2.75HT) 2 3/4 TEKCO HI TEMP LOGGING CCL	1.83	2.75	15.00
			comp 2 3/4" COMPUTALOG BOW SPRING	2.64	2.75	10.00
TEMP	13.37					
WVFS1	11.95					
WVFS2	11.95					
WVFS3	11.95					
WVFS4	11.95					
WVFS5	11.95					
WVFS6	11.95					
WVFS7	11.95					
WVFS8	11.95					
WVF3FT	11.20					
WVF5FT	10.20					
WVFCAL	6.91					
WVFTEMP	6.91					
			comp 2 3/4" COMPUTALOG BOW SPRING	2.64	2.75	10.00
			GR-MTEKCOHT (2.75HT) 2 3/4 TEKCO HI TEMP GAMMA RAY	4.27	2.75	40.00
GR	1.08					

Dataset: elsie7-34h.db: field/well/run1/pass6  
 Total Length: 20.42 ft  
 Total Weight: 165.00 lb  
 O.D.: 2.75 in



# MAIN PASS

## UPPER SECTION

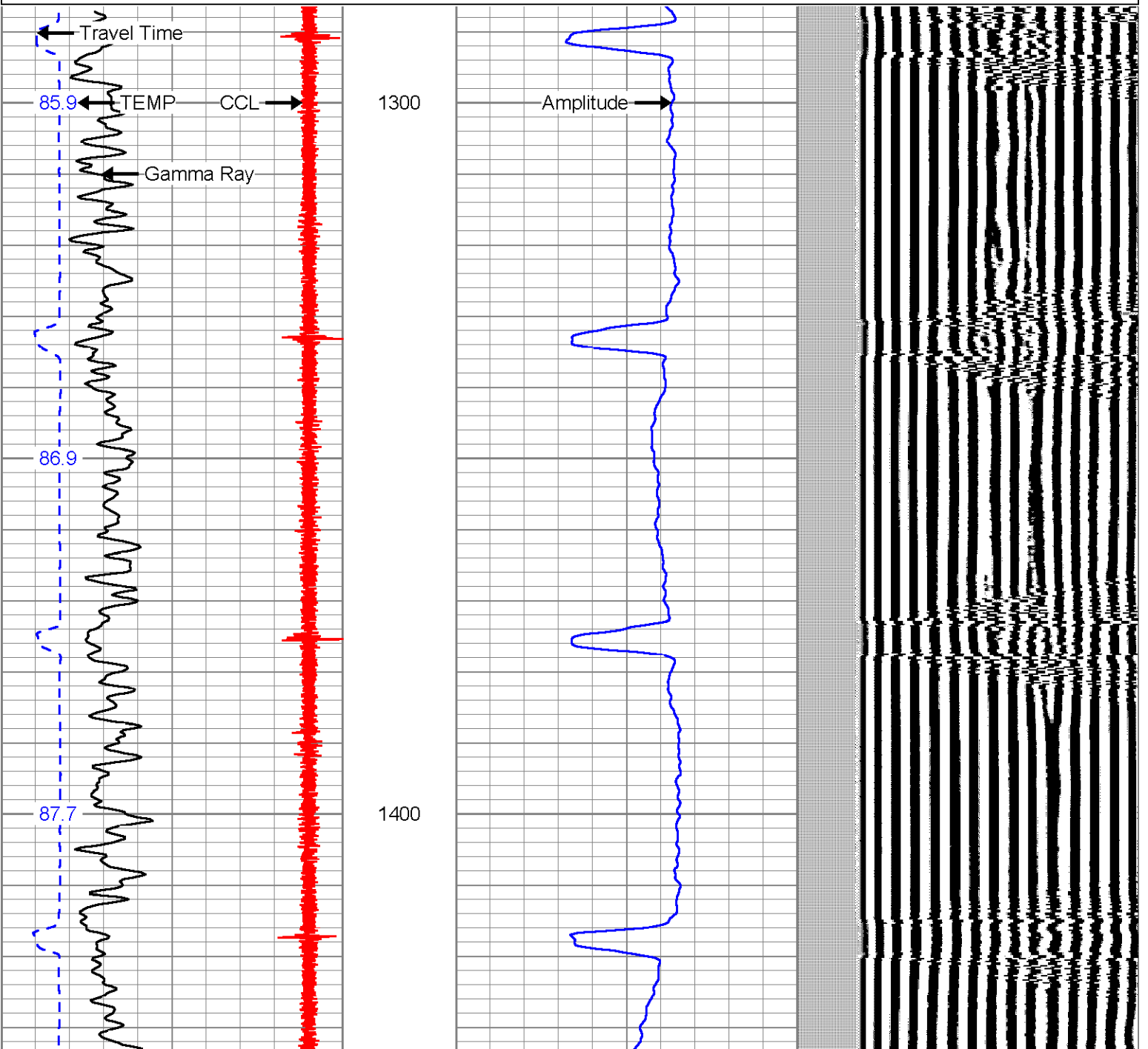
Database File: elsie7-34h.db  
 Dataset Pathname: pass6  
 Presentation Format: sec2cbl  
 Dataset Creation: Wed Jan 01 02:12:47 2003 by Log Std Casedhole 07122  
 Charted by: Depth in Feet scaled 1:240

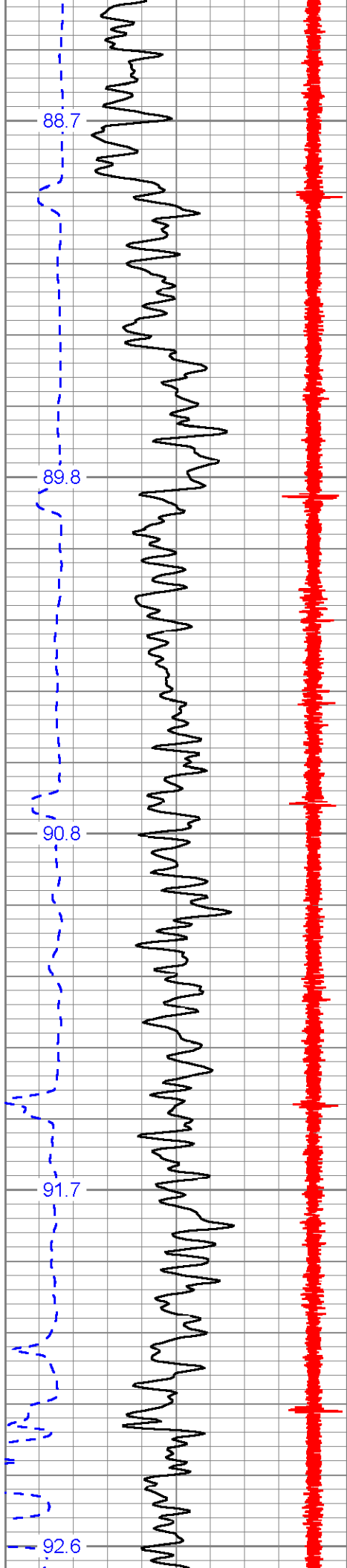
285	Travel Time (usec)	185
-9	CCL	1
0	Gamma Ray (cps)	150

0	Amplitude (mV)	100
0	Amplified Amplitude (mV)	20

200 Variable Density 1200

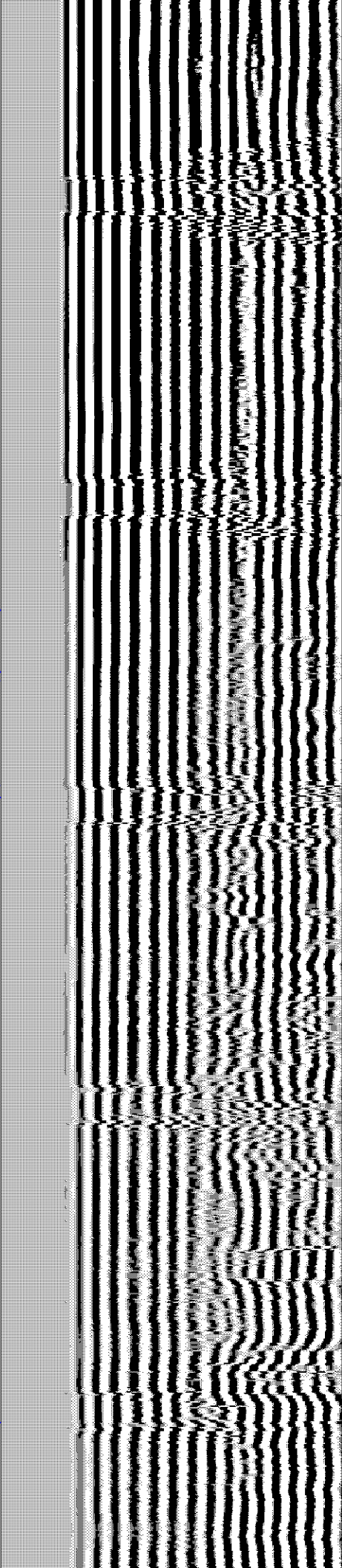
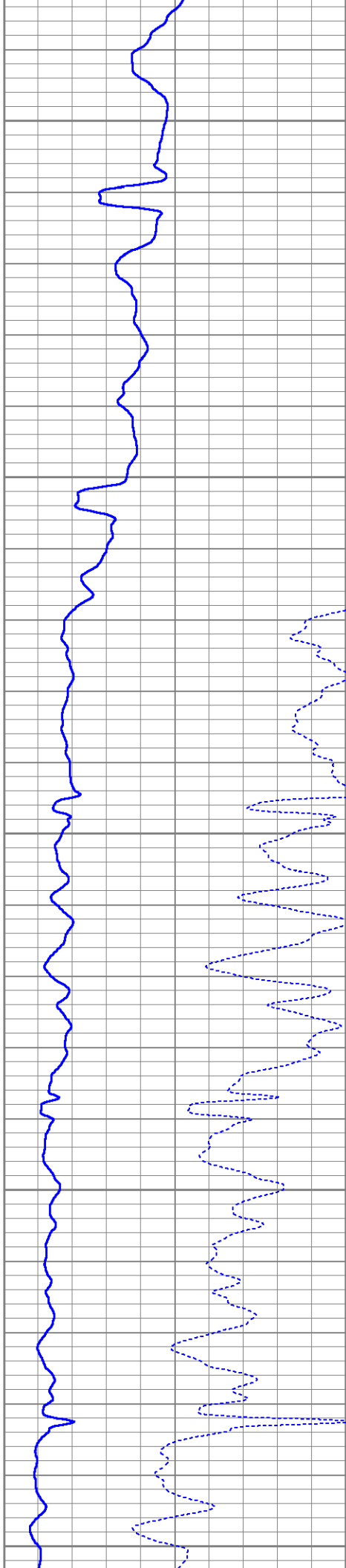
TEMP  
(degF)

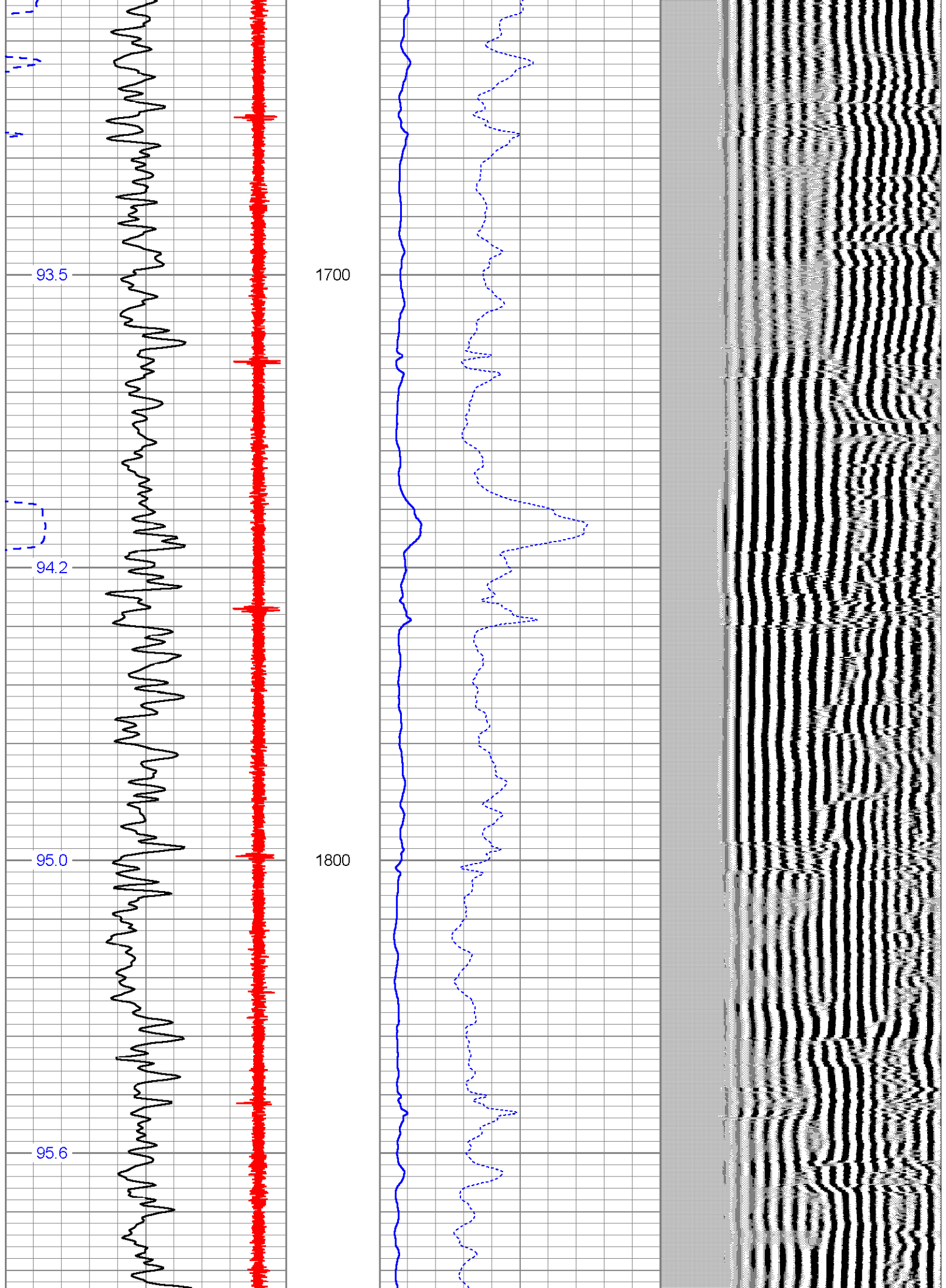


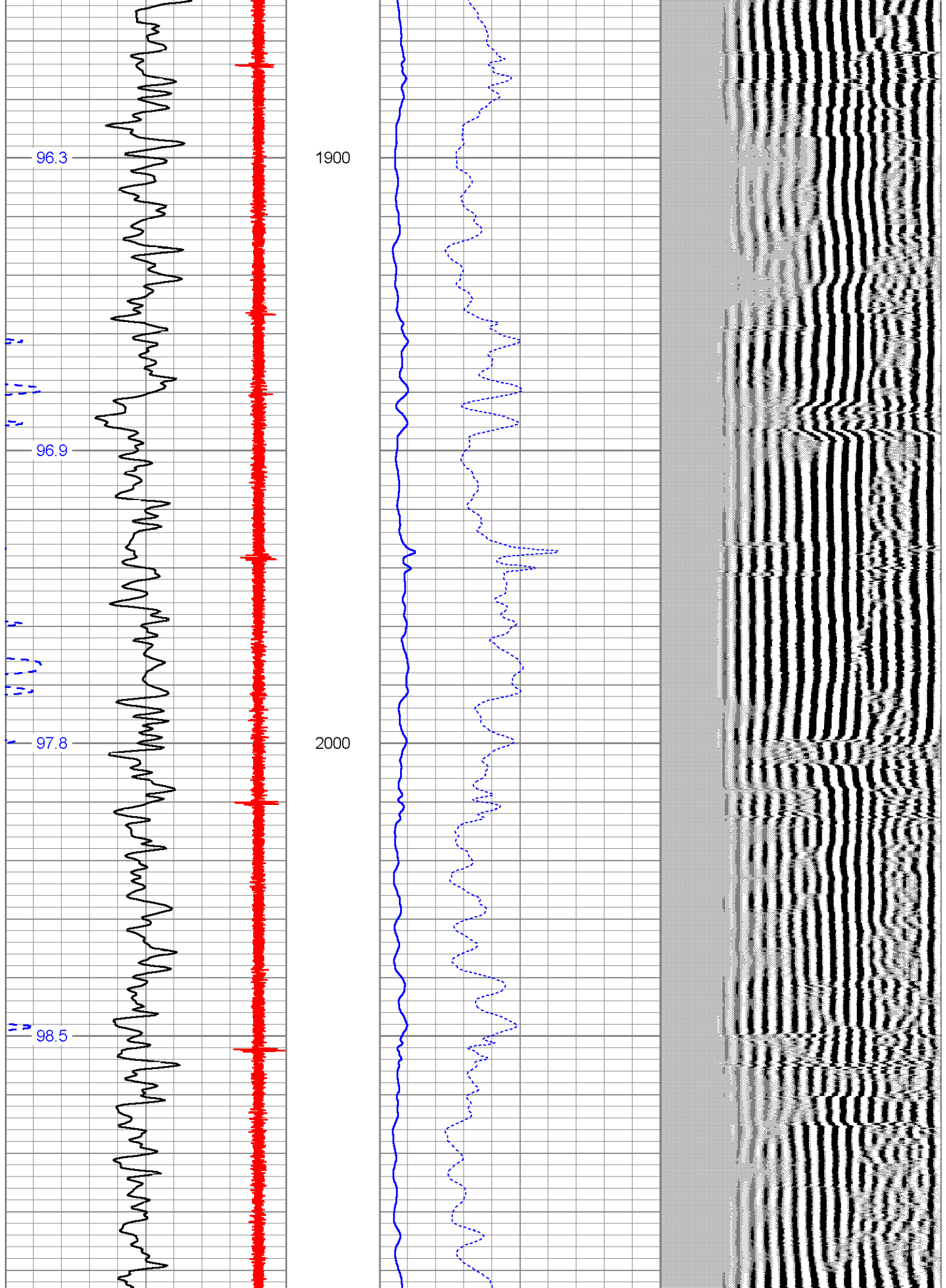


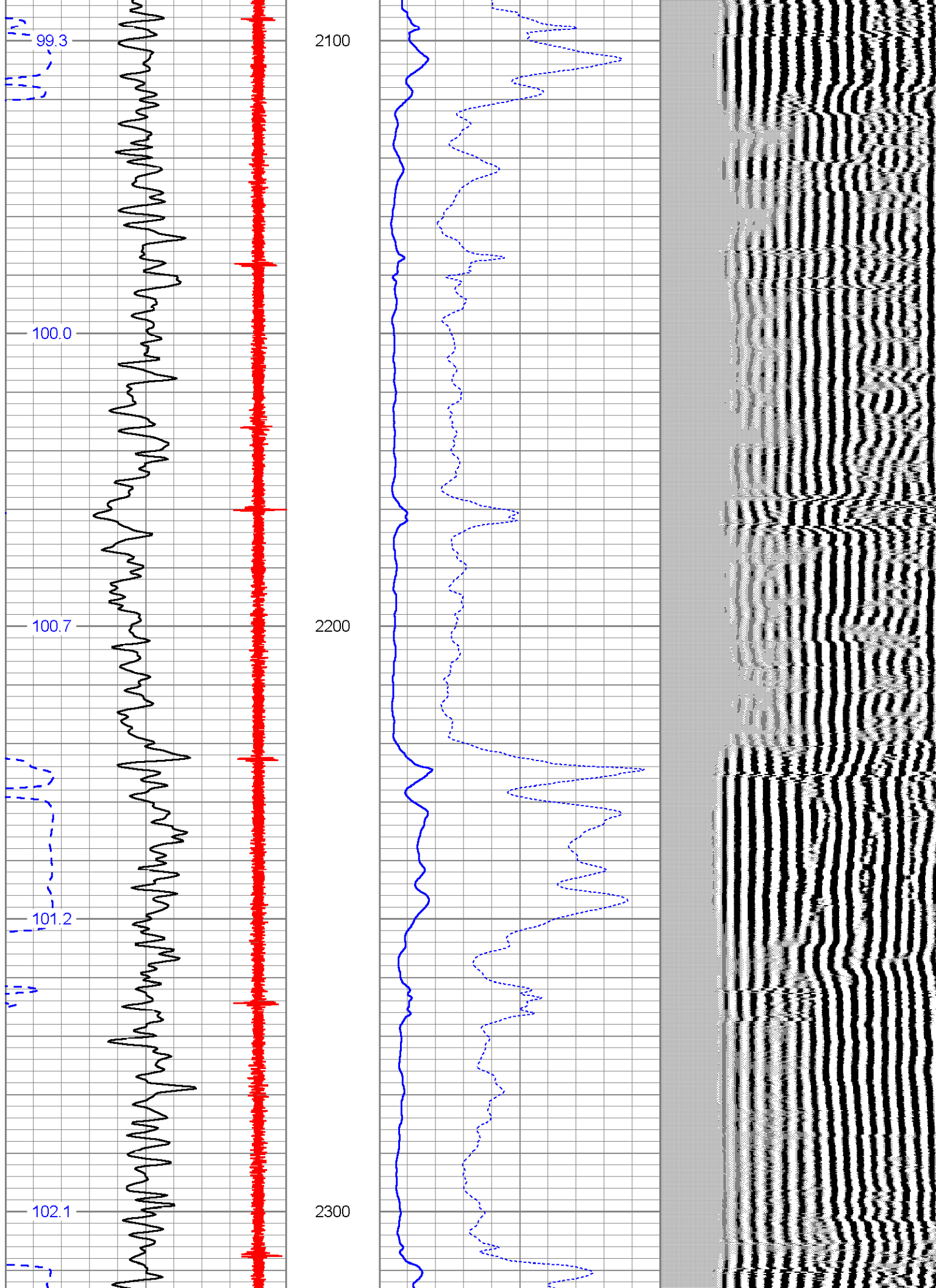
1500

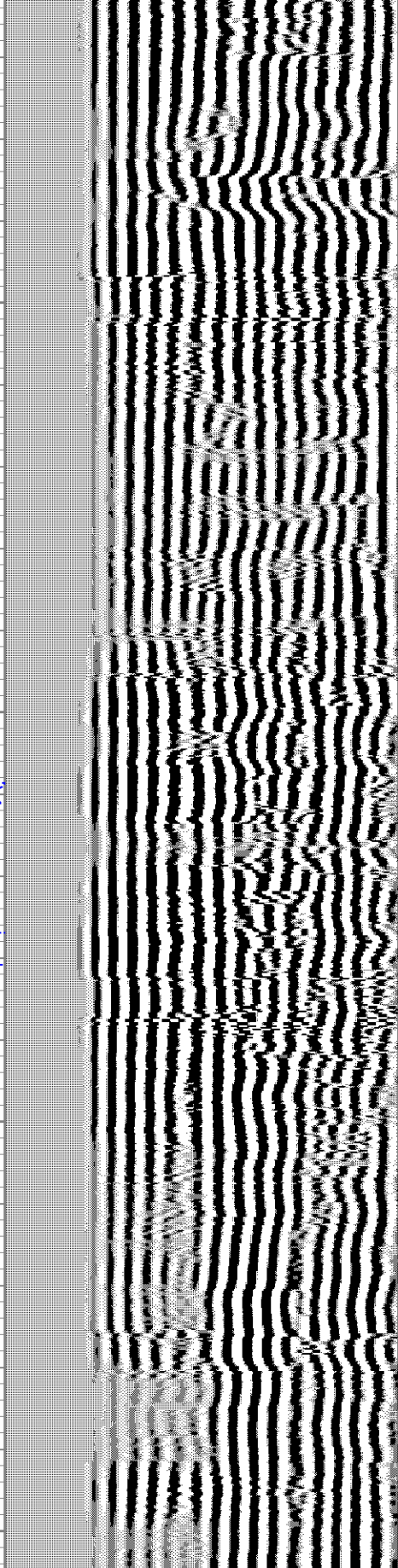
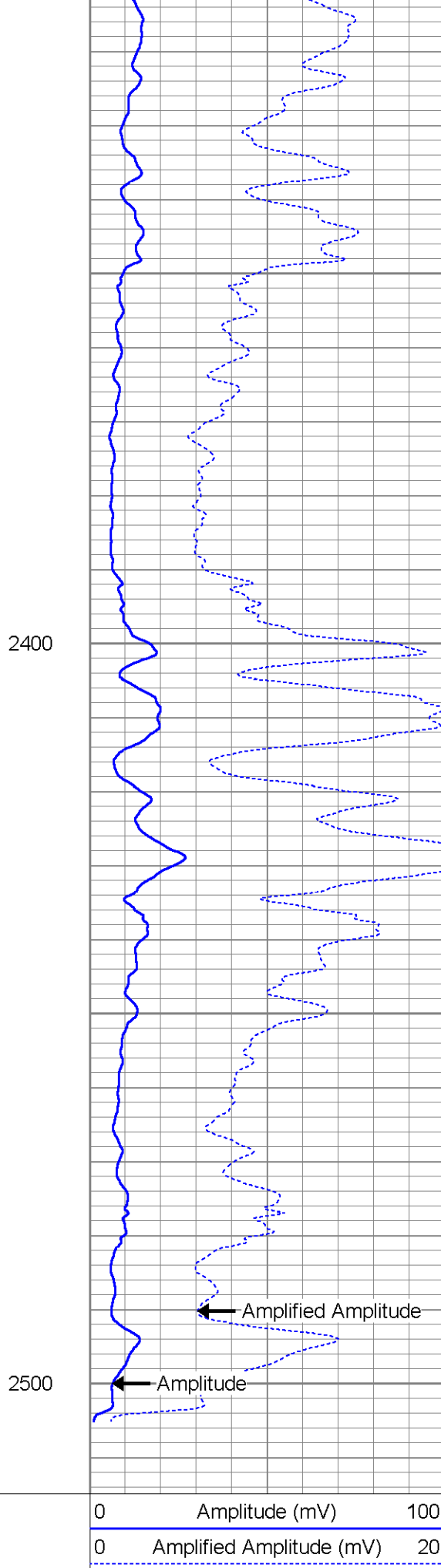
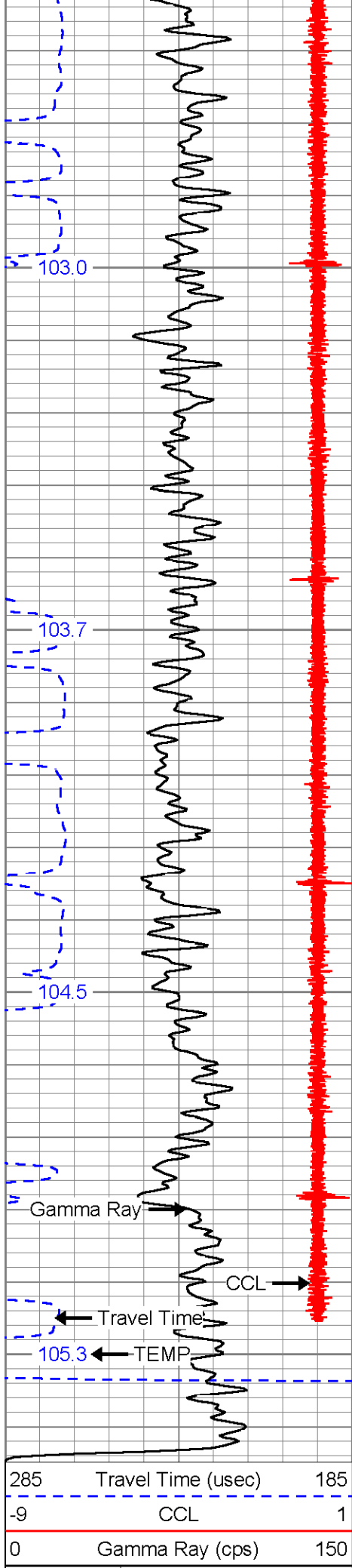
1600











200 1200

(degF)



# MAIN PASS

## UPPER SECTION



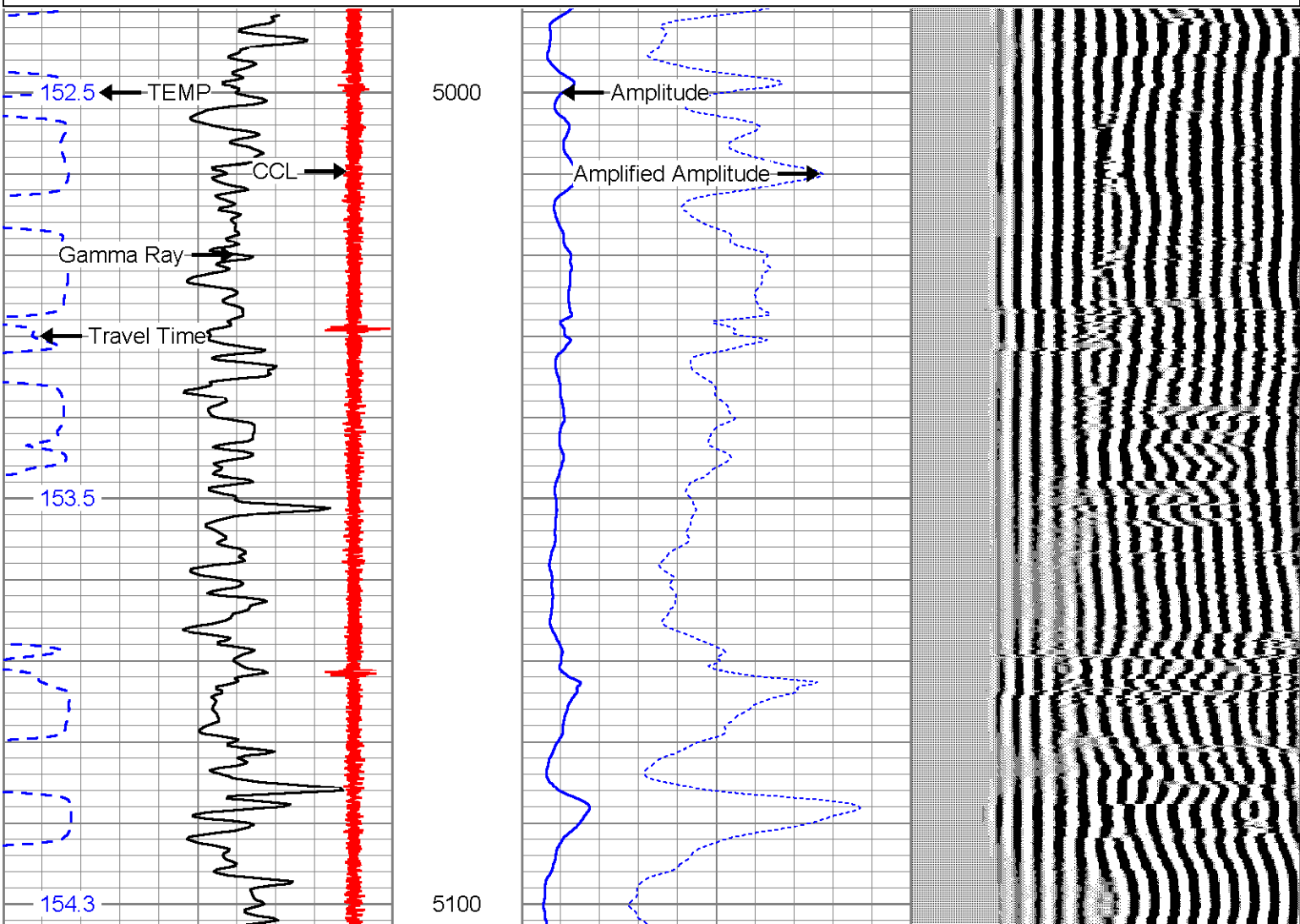
# MAIN PASS

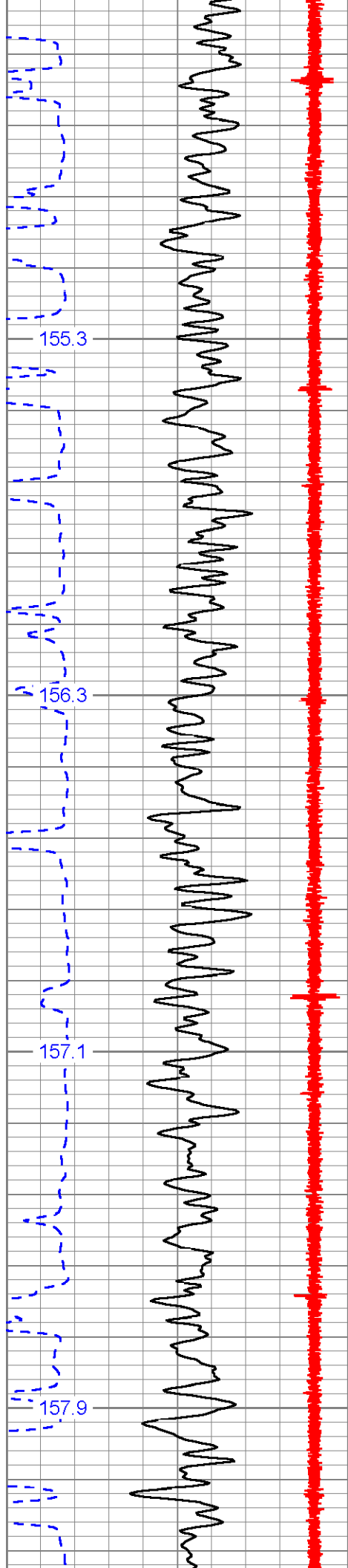
## LOWER SECTION

Database File: elsie7-34h.db  
 Dataset Pathname: pass4  
 Presentation Format: sec2cbl  
 Dataset Creation: Wed Jan 01 01:26:38 2003 by Log Std Casedhole 07122  
 Charted by: Depth in Feet scaled 1:240

285	Travel Time (usec)	185	0	Amplitude (mV)	100	200	Variable Density	1200
-9	CCL	1	0	Amplified Amplitude (mV)	20			
0	Gamma Ray (cps)	150						

TEMP  
(degF)





155.3

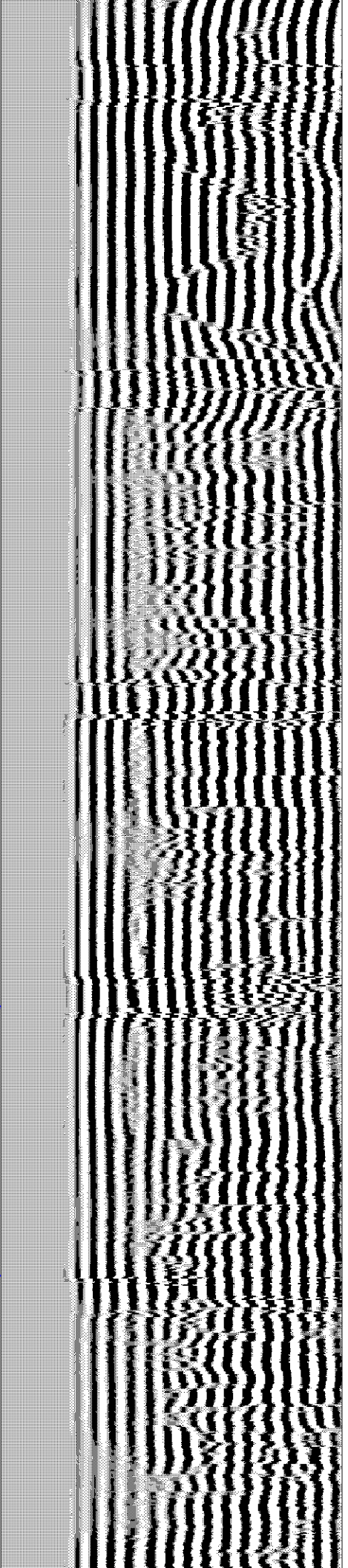
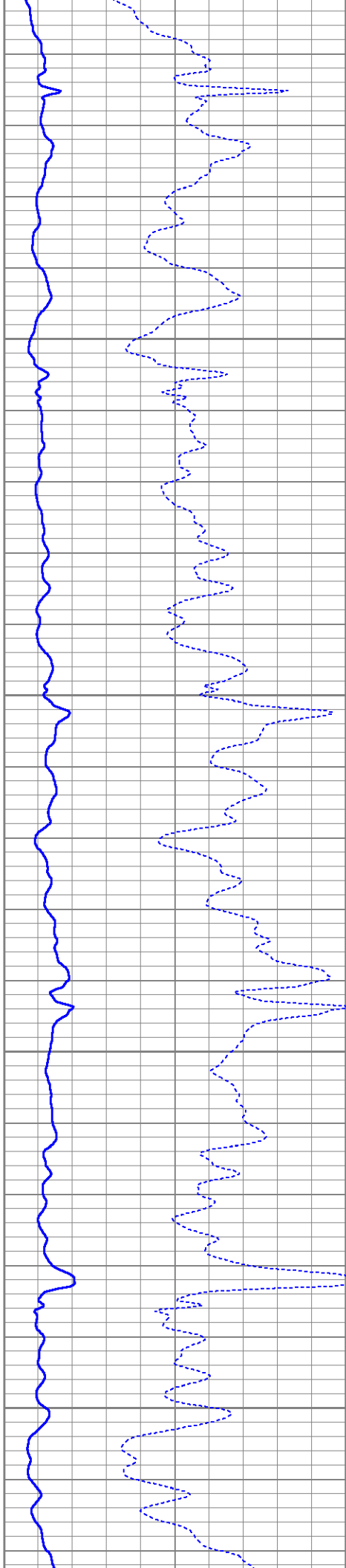
156.3

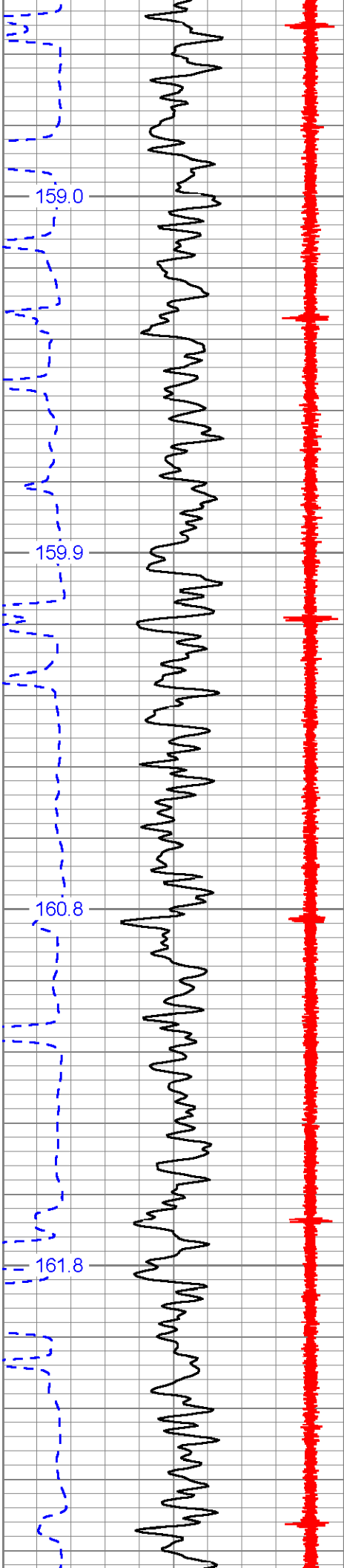
157.1

157.9

5200

5300





159.0

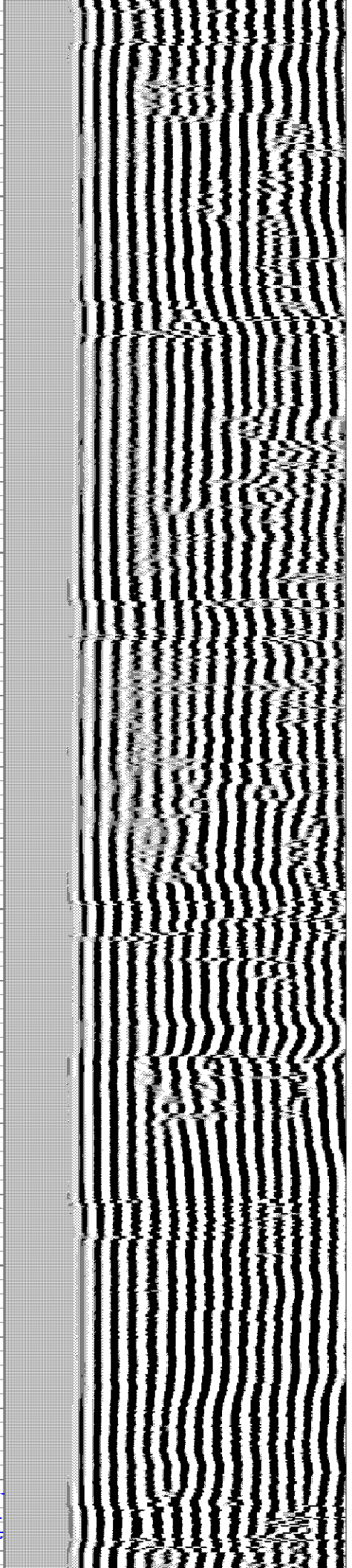
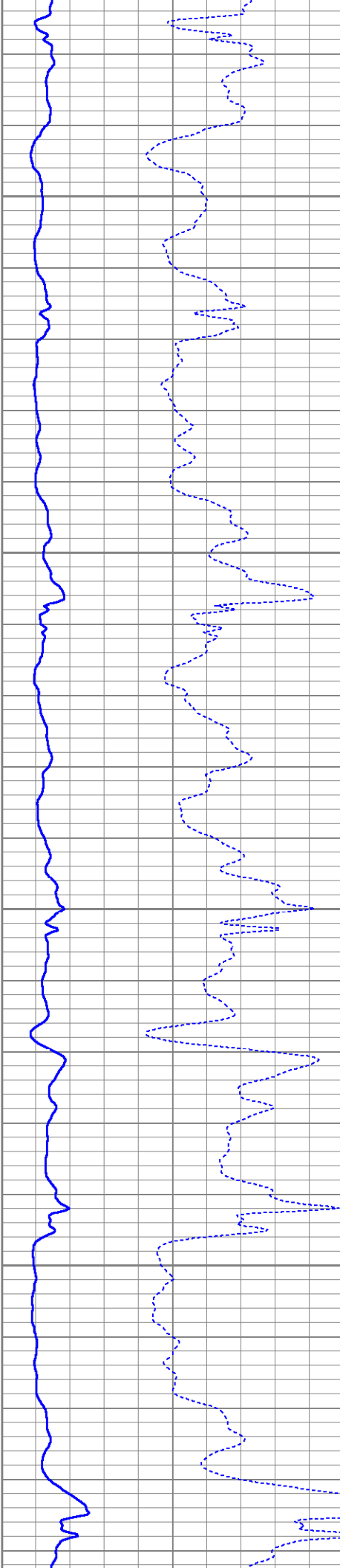
159.9

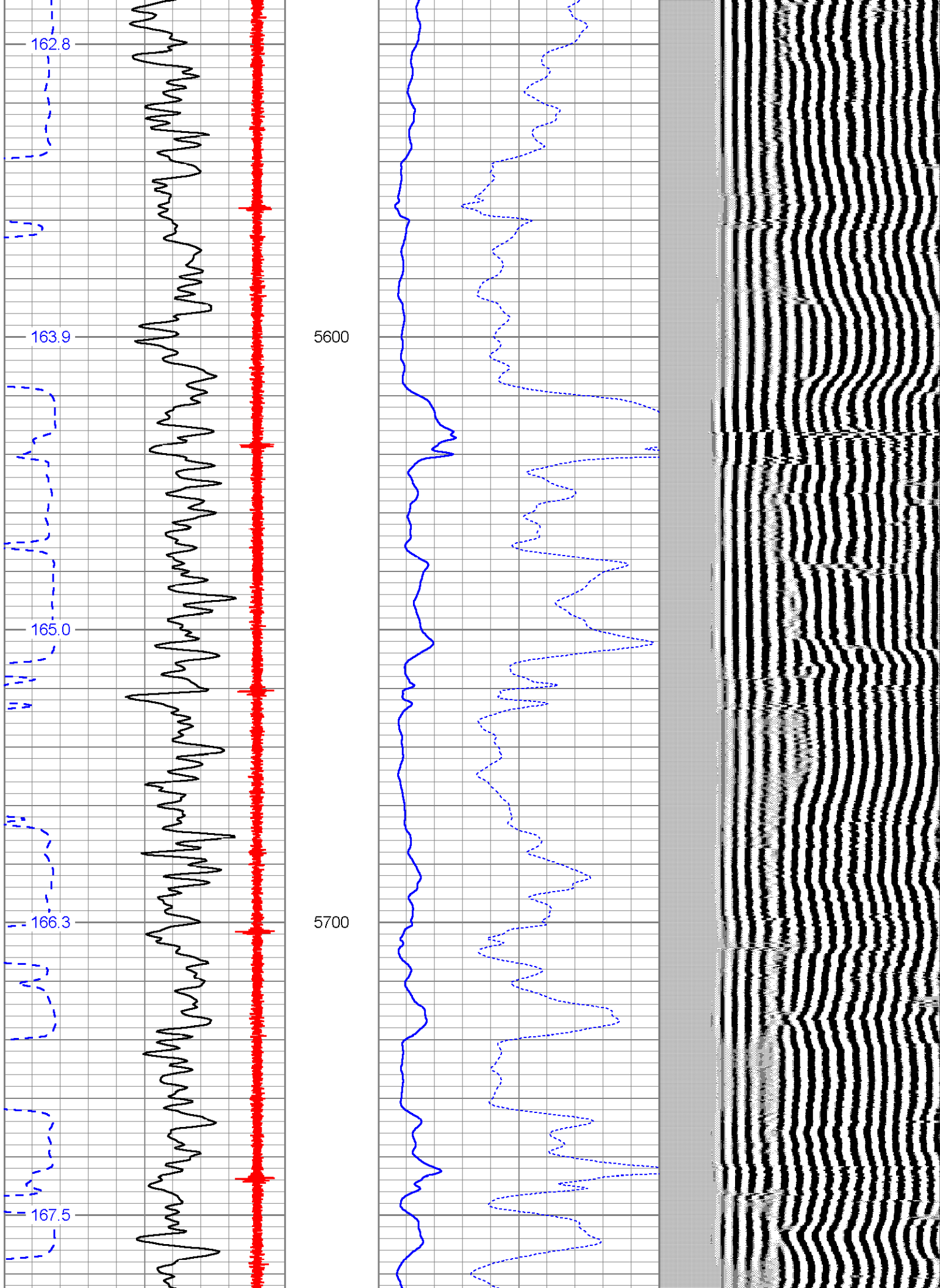
160.8

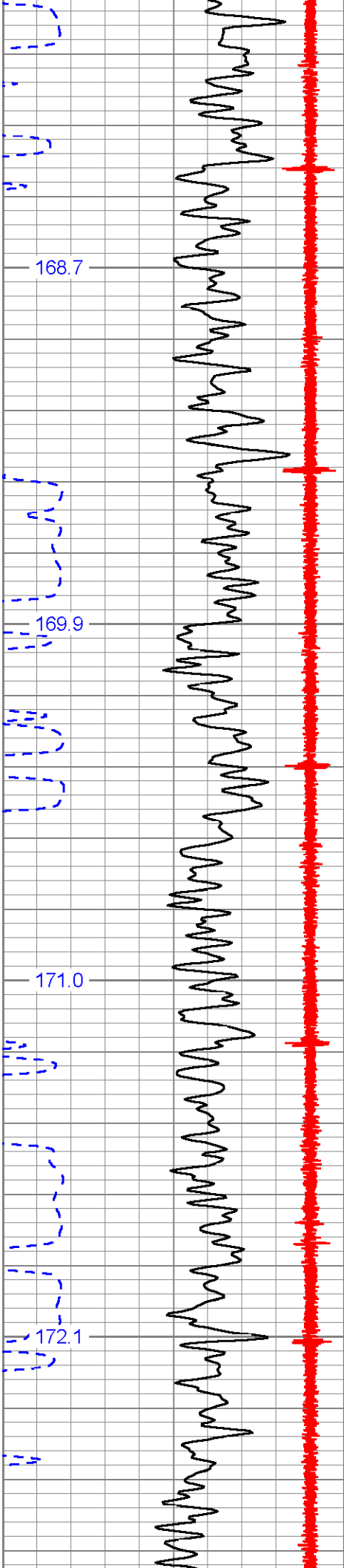
161.8

5400

5500

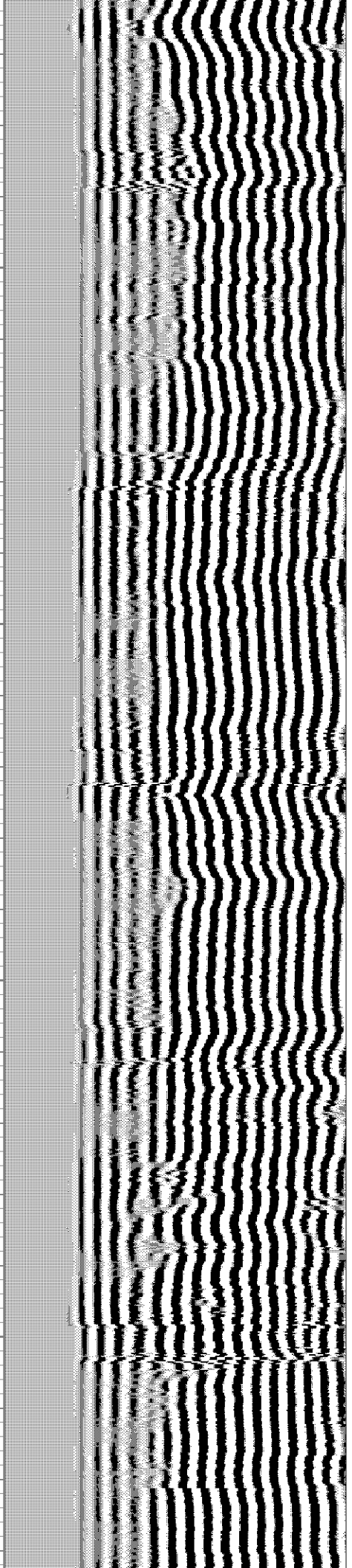
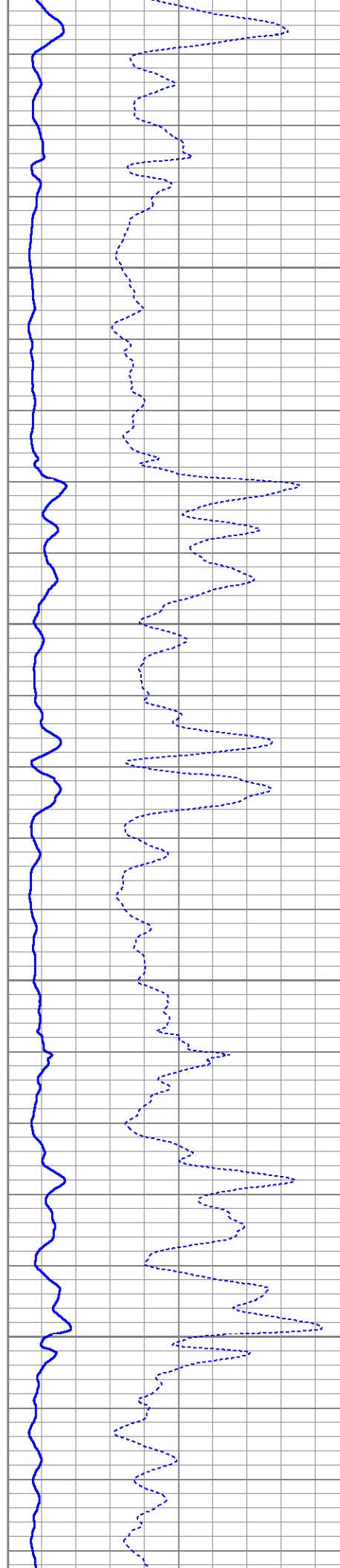


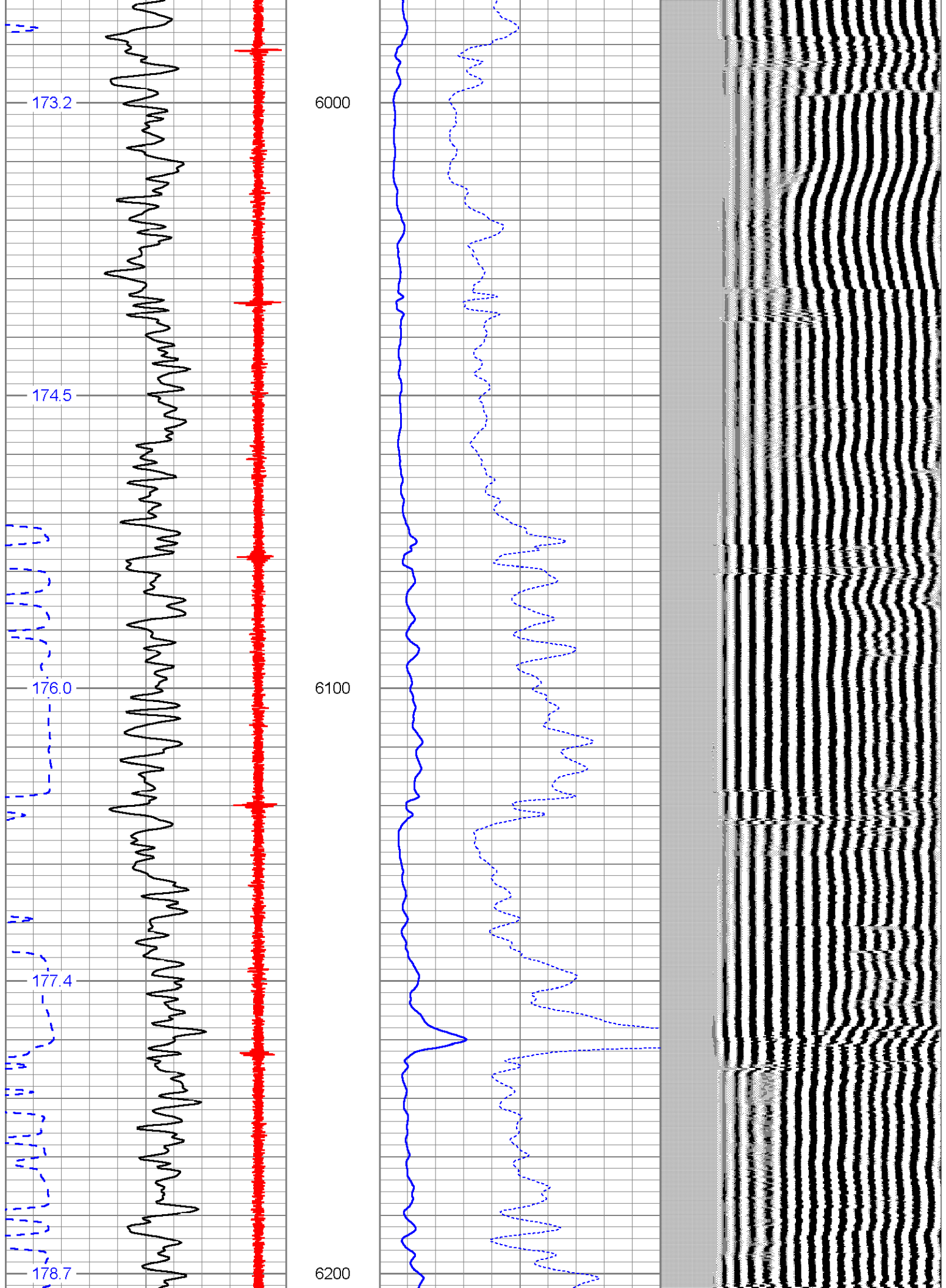


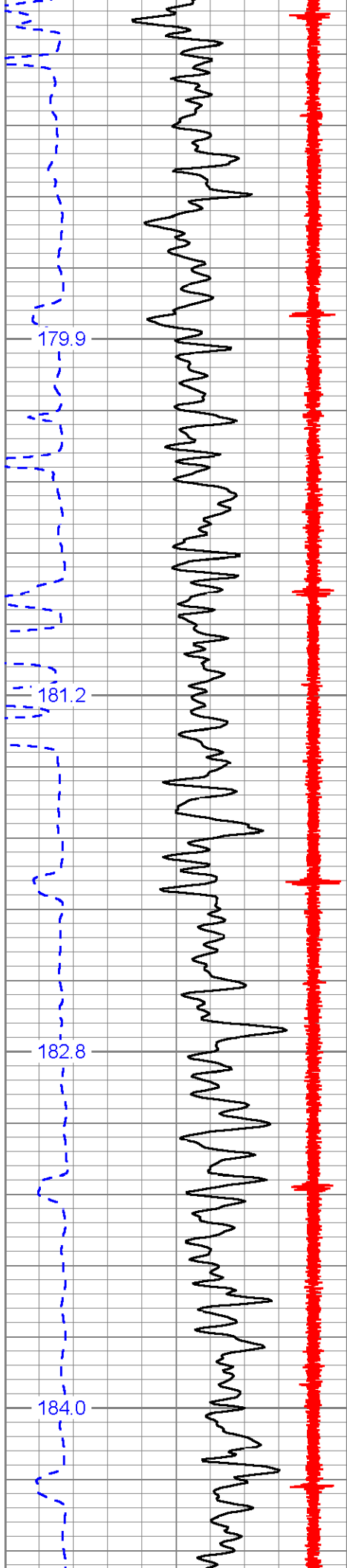


5800

5900

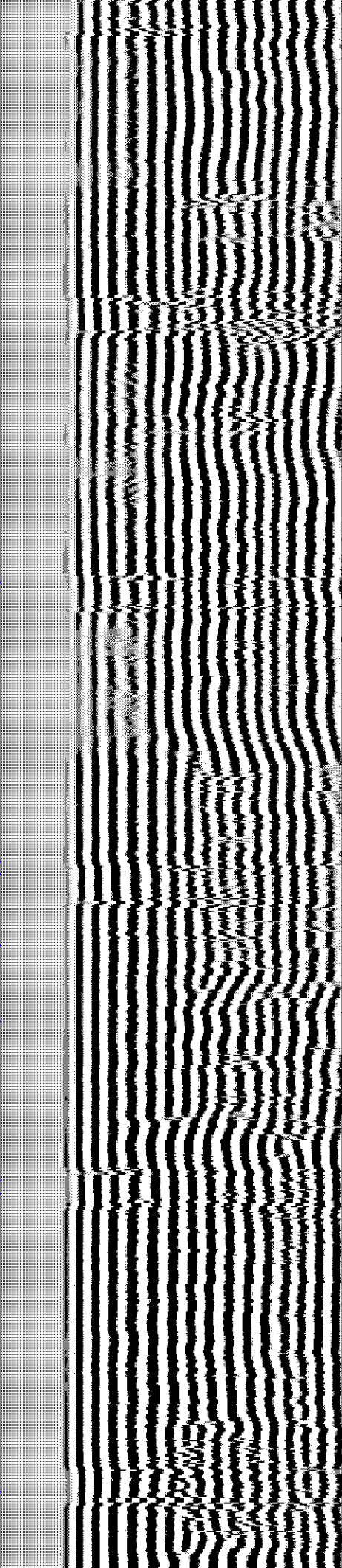
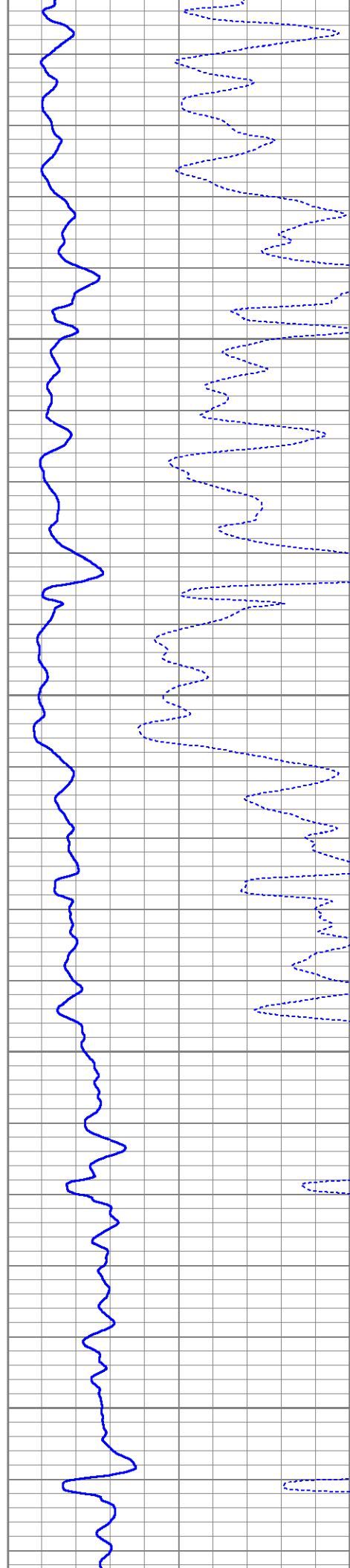


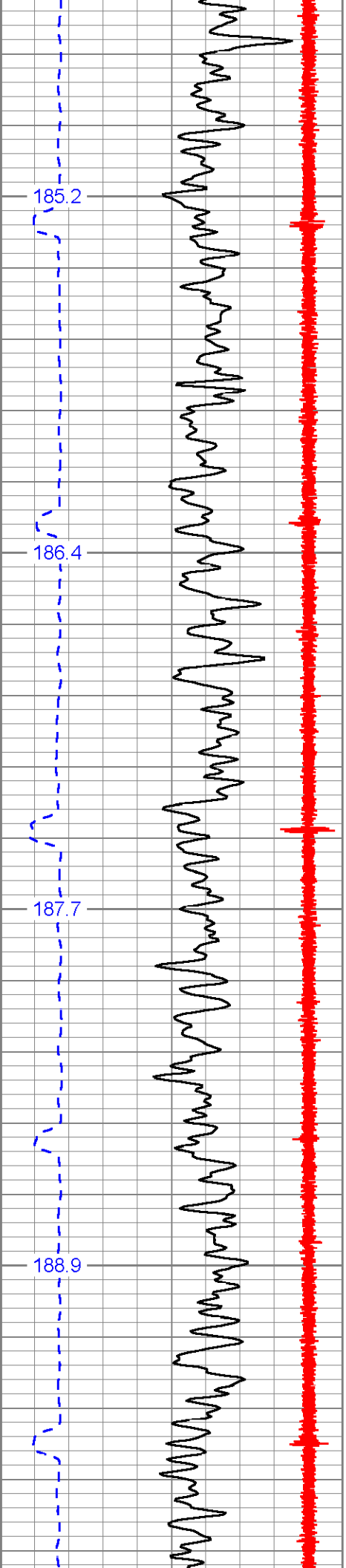




6300

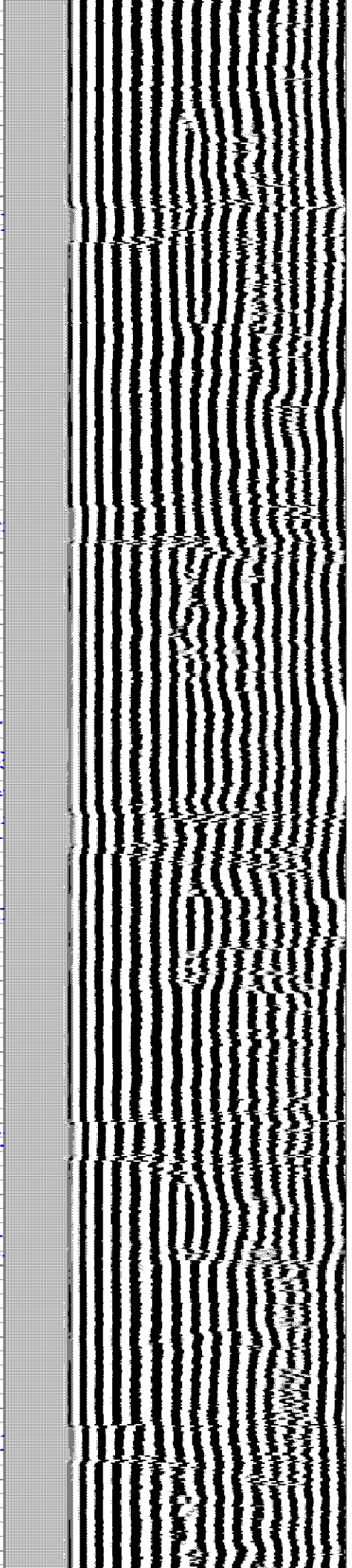
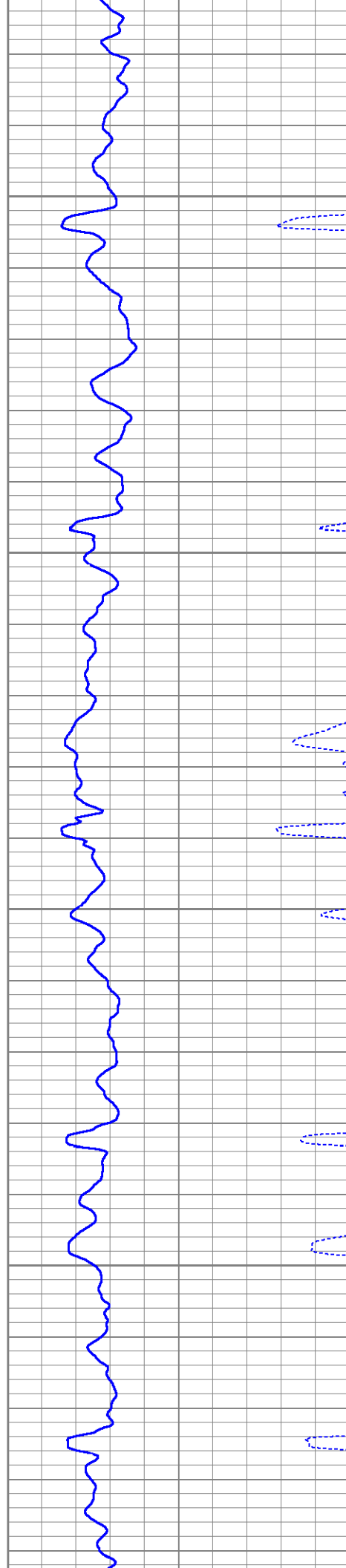
6400

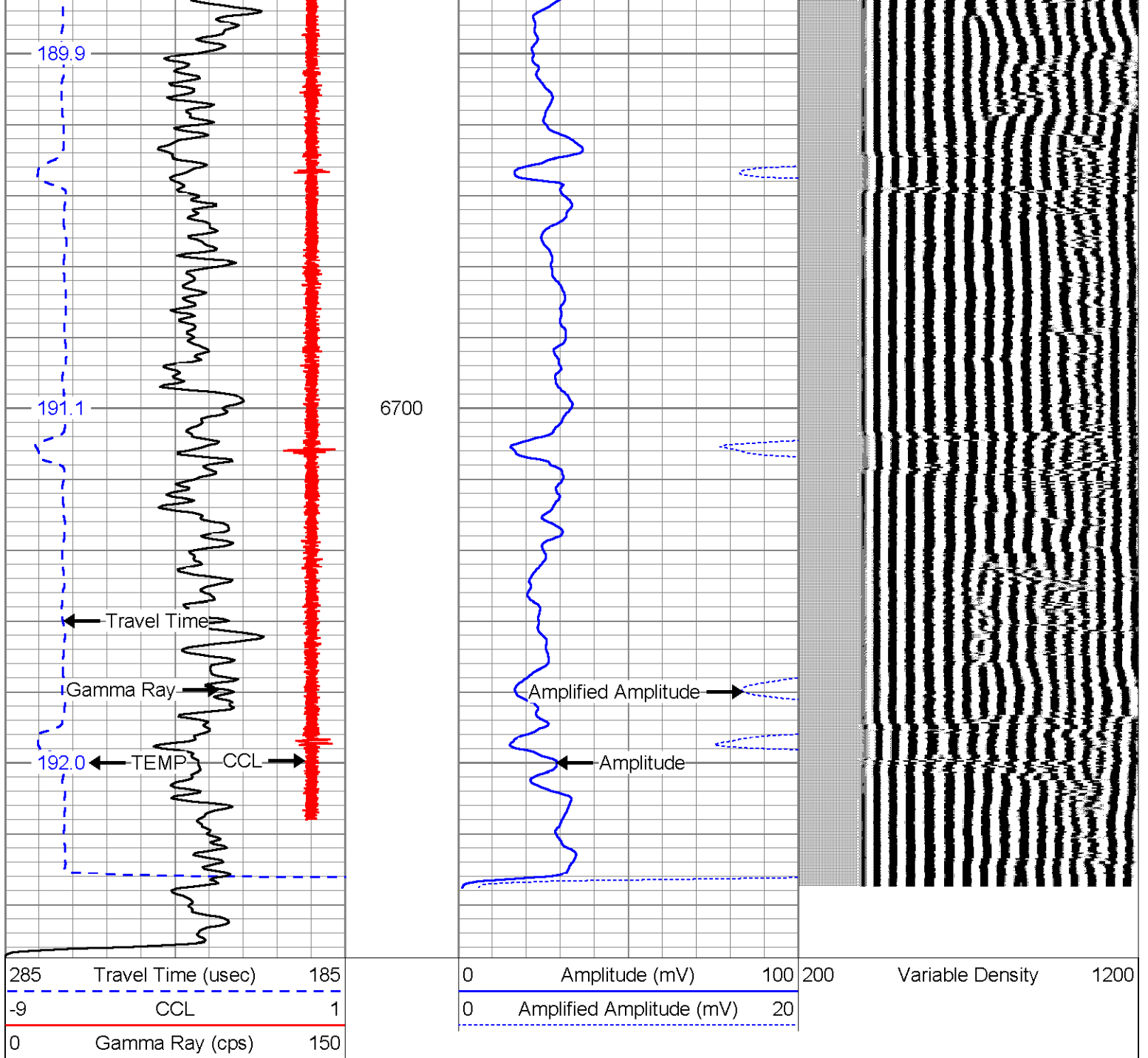




6500

6600





MAIN PASS

LOWER SECTION



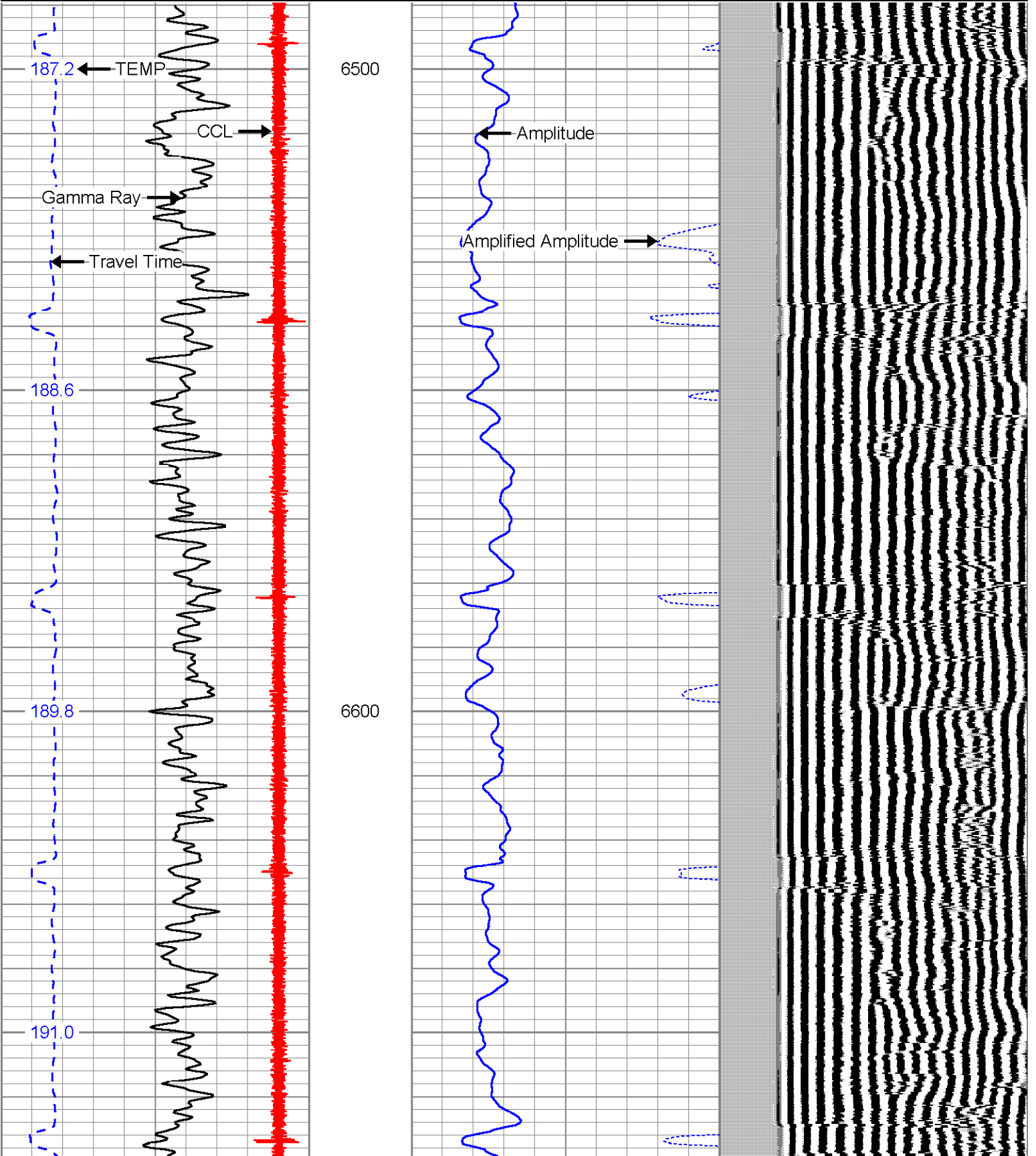
REPEAT PASS

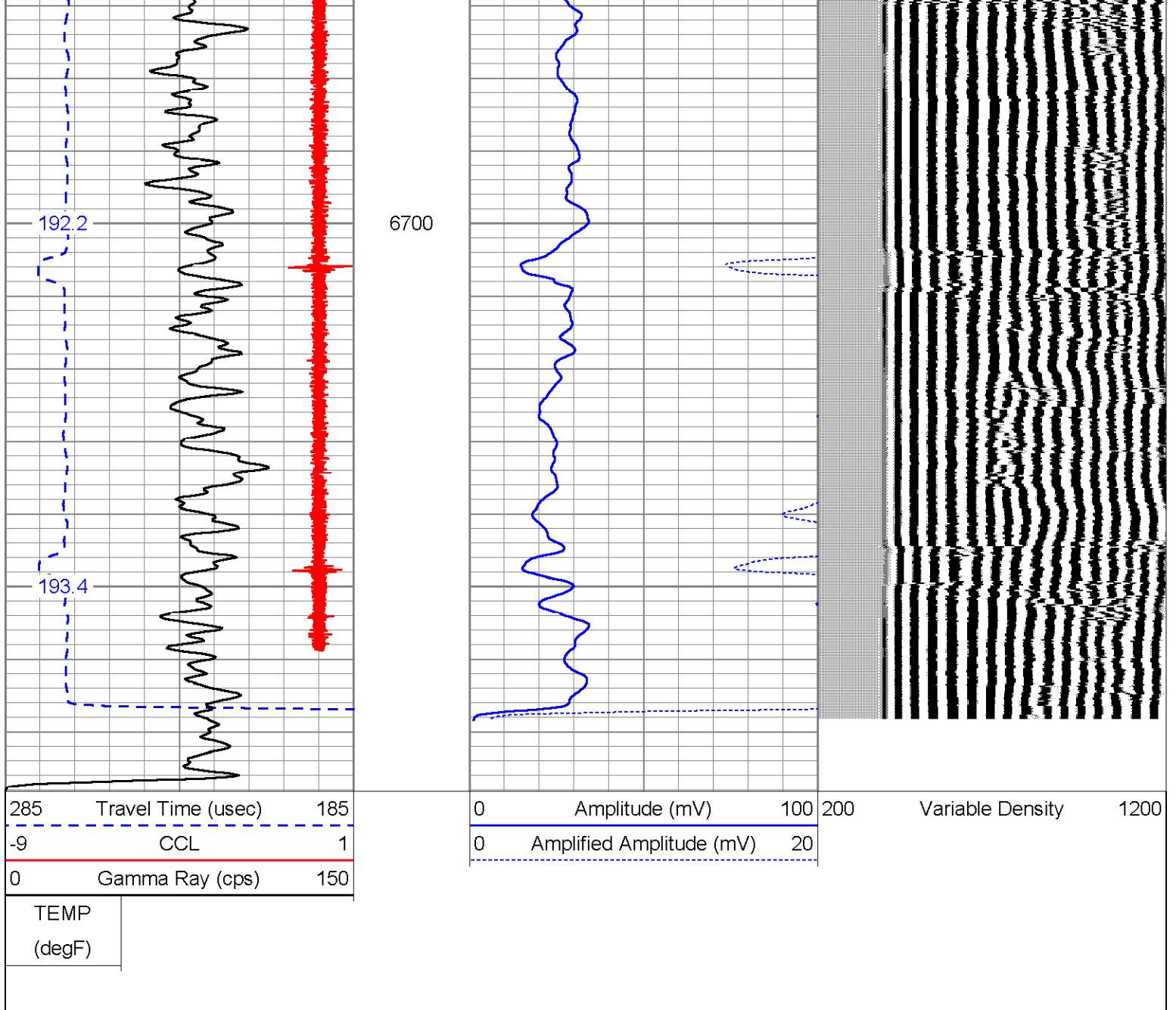
285	Travel Time (usec)	185
-9	CCL	1
0	Gamma Ray (cps)	150

0	Amplitude (mV)	100
0	Amplified Amplitude (mV)	20

200 Variable Density 1200

TEMP  
(degF)





REPEAT PASS

Calibration Report

Database File: elsie7-34h.db  
 Dataset Pathname: pass6  
 Dataset Creation: Wed Jan 01 02:12:47 2003 by Log Std Casedhole 07122

Gamma Ray Calibration Report

Serial Number: 2.75HT  
 Tool Model: MTEKCOHT  
 Performed: Sun Jun 13 13:33:21 1993

Calibrator Value: 1.0 cps

Background Reading: 0.0 cps  
 Calibrator Reading: 1.0 cps

Sensitivity: 1.0000 cps/cps

### Segmented Cement Bond Log Calibration Report

Serial Number: SCBLTEMP  
 Tool Model: TEKSECTEMP  
 Calibration Casing Diameter: 7.000 in  
 Calibration Depth: 149.792 ft

Master Calibration, performed Wed Jan 01 00:35:34 2003:

	Raw (v)		Calibrated (mv)		Results	
	Zero	Cal	Zero	Cal	Gain	Offset
3'	-0.001	0.337	1.000	62.165	180.821	1.234
CAL	-0.002	0.329				
5'	-0.002	0.491	1.000	62.165	124.103	1.188
SUM						
S1	-0.002	0.197	0.000	100.000	502.793	1.123
S2	-0.002	0.218	0.000	100.000	456.303	0.752
S3	-0.002	0.312	0.000	100.000	318.606	0.739
S4	-0.001	0.428	0.000	100.000	232.906	0.318
S5	-0.002	0.422	0.000	100.000	235.809	0.486
S6	-0.002	0.319	0.000	100.000	311.827	0.628
S7	-0.002	0.242	0.000	100.000	410.627	0.627
S8	-0.002	0.208	0.000	100.000	476.224	1.093

Internal Reference Calibration, performed Wed Jan 01 01:51:49 2003:

	Raw (v)		Calibrated (v)		Results	
	Zero	Cal	Zero	Cal	Gain	Offset
CAL	0.000	0.000	-0.002	0.329	1.000	0.000

Air Zero Calibration, performed Wed Jan 01 00:21:41 2003:

	Raw (v)		Calibrated (v)		Results	
	Zero		Zero		Gain	Offset
3'	0.000		0.000			0.000
5'	0.000		0.000			0.000
SUM						
S1	0.000		0.000			0.000
S2	0.000		0.000			0.000
S3	0.000		0.000			0.000
S4	0.000		0.000			0.000
S5	0.000		0.000			0.000
S6	0.000		0.000			0.000
S7	0.000		0.000			0.000
S8	0.000		0.000			0.000

### Temperature Calibration Report

Serial Number: SCBLTEMP  
 Tool Model: TEKSECTEMP  
 Performed: Mon Nov 12 07:07:39 2007

	Reference	Reading
Low Reference:	0.00 degF	0.00 usec
High Reference:	1.00 degF	1.00 usec

Gain: 0.22

Gain: 0.33  
Offset: -30.00  
Delta Spacing 1



Company EOG RESOURCES  
Well ELSIE 7-34H  
Field HEREFORD  
County WELD  
State CO