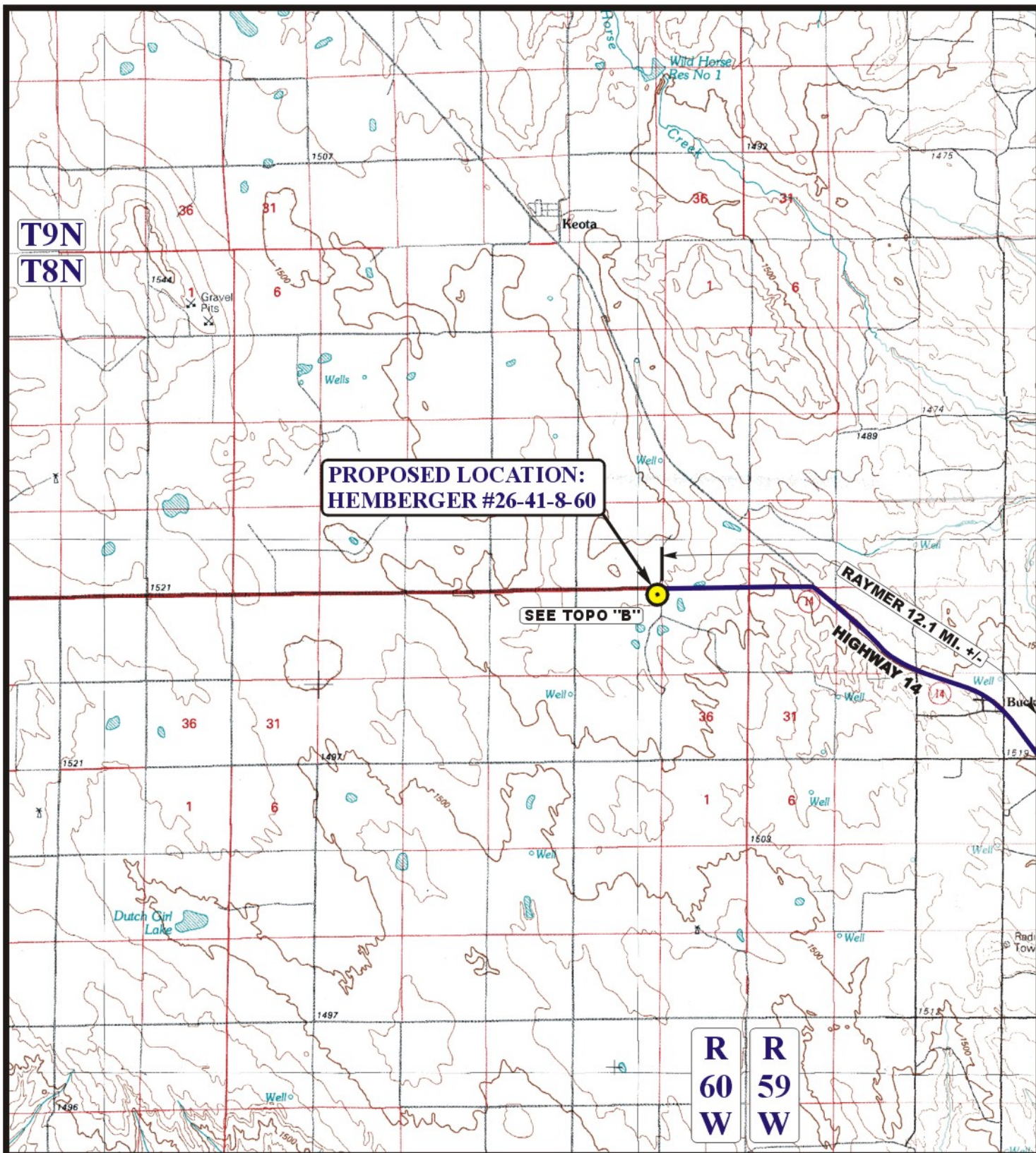


CARRIZO OIL & GAS, INC.
HEMBERGER #26-41-8-60
SECTION 26, T8N, R60W, 6th P.M.

PROCEED IN A SOUTHWESTERLY, THEN NORTHWESTERLY, THEN WESTERLY DIRECTION FROM RAYMER, COLORADO ALONG HIGHWAY 14 APPROXIMATELY 12.1 MILES TO THE BEGINNING OF THE PROPOSED ACCESS TO THE SOUTH; FOLLOW ROAD FLAGS IN A SOUTHERLY DIRECTION APPROXIMATELY 295' TO THE PROPOSED LOCATION.

TOTAL DISTANCE FROM RAYMER, COLORADO TO THE PROPOSED LOCATION IS APPROXIMATELY 12.2 MILES.



**PROPOSED LOCATION:
HEMBERGER #26-41-8-60**

SEE TOPO "B"

RAYMER 12.1 MI. +/-
HIGHWAY 14

**R
60
W**

**R
59
W**

LEGEND:

 PROPOSED LOCATION

CARRIZO OIL & GAS, INC.

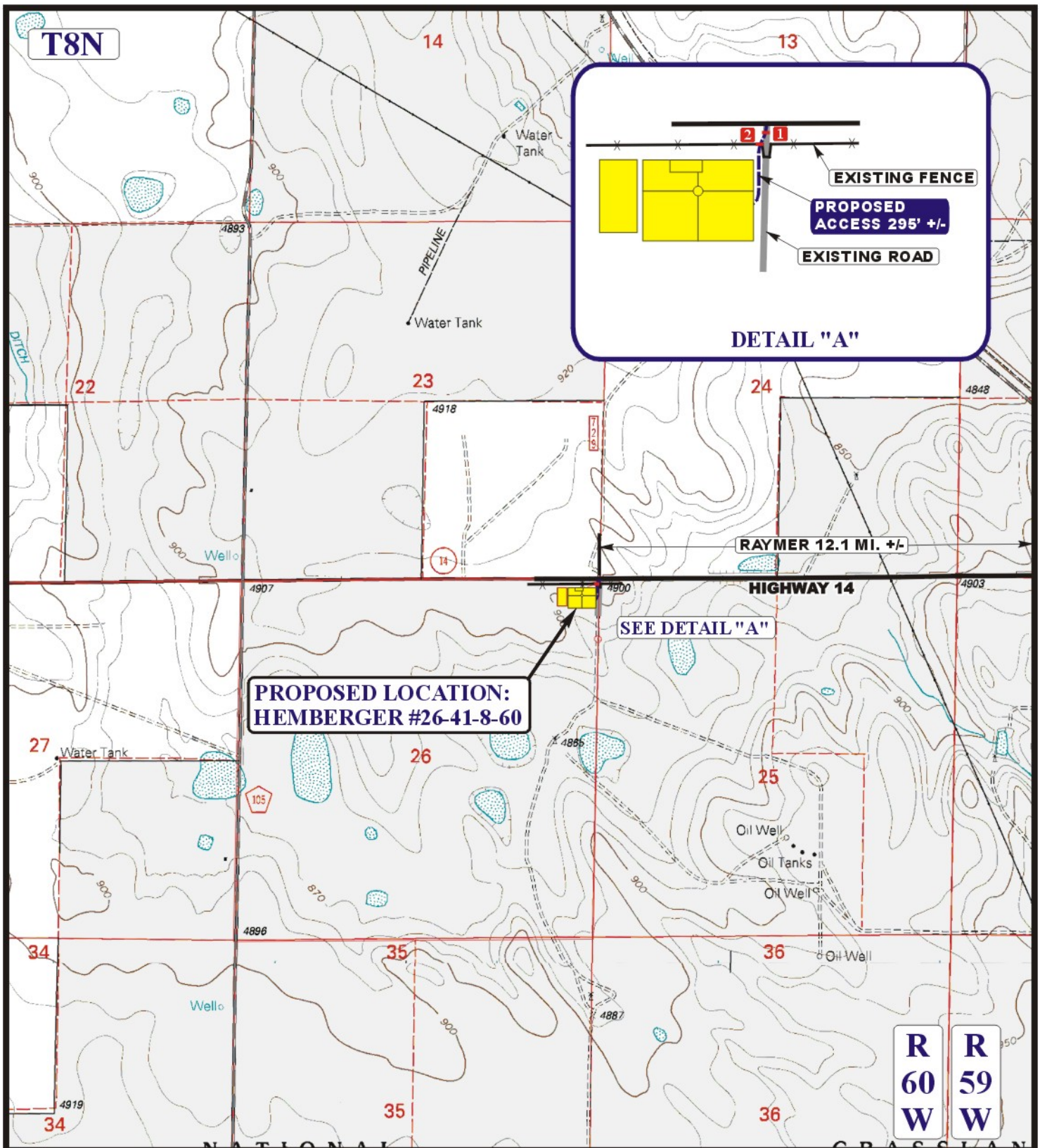
**HEMBERGER #26-41-8-60
SECTION 26, T8N, R60W, 6th P.M.
245' FNL 245' FEL**



Uintah Engineering & Land Surveying
85 South 200 East Vernal, Utah 84078
(435) 789-1017 * FAX (435) 789-1813



ACCESS ROAD MAP	07 MONTH	05 DAY	11 YEAR	A TOPO
SCALE: 1:100,000	DRAWN BY: C.A.G.		REVISED: 00-00-00	



LEGEND:

- EXISTING ROAD
- PROPOSED ACCESS ROAD
- EXISTING ROAD
- EXISTING FENCE
- 18" CMP REQUIRED
- INSTALL CATTLE GUARD

CARRIZO OIL & GAS, INC.

HEMBERGER #26-41-8-60
SECTION 26, T8N, R60W, 6th P.M.
245' FNL 245' FEL

UELS Uintah Engineering & Land Surveying
 85 South 200 East Vernal, Utah 84078
 (435) 789-1017 * FAX (435) 789-1813



ACCESS ROAD **07 05 11**
M A P MONTH DAY YEAR
 SCALE: 1" = 2000' DRAWN BY: C.A.G. REVISED: 00-00-00 **B TOPO**