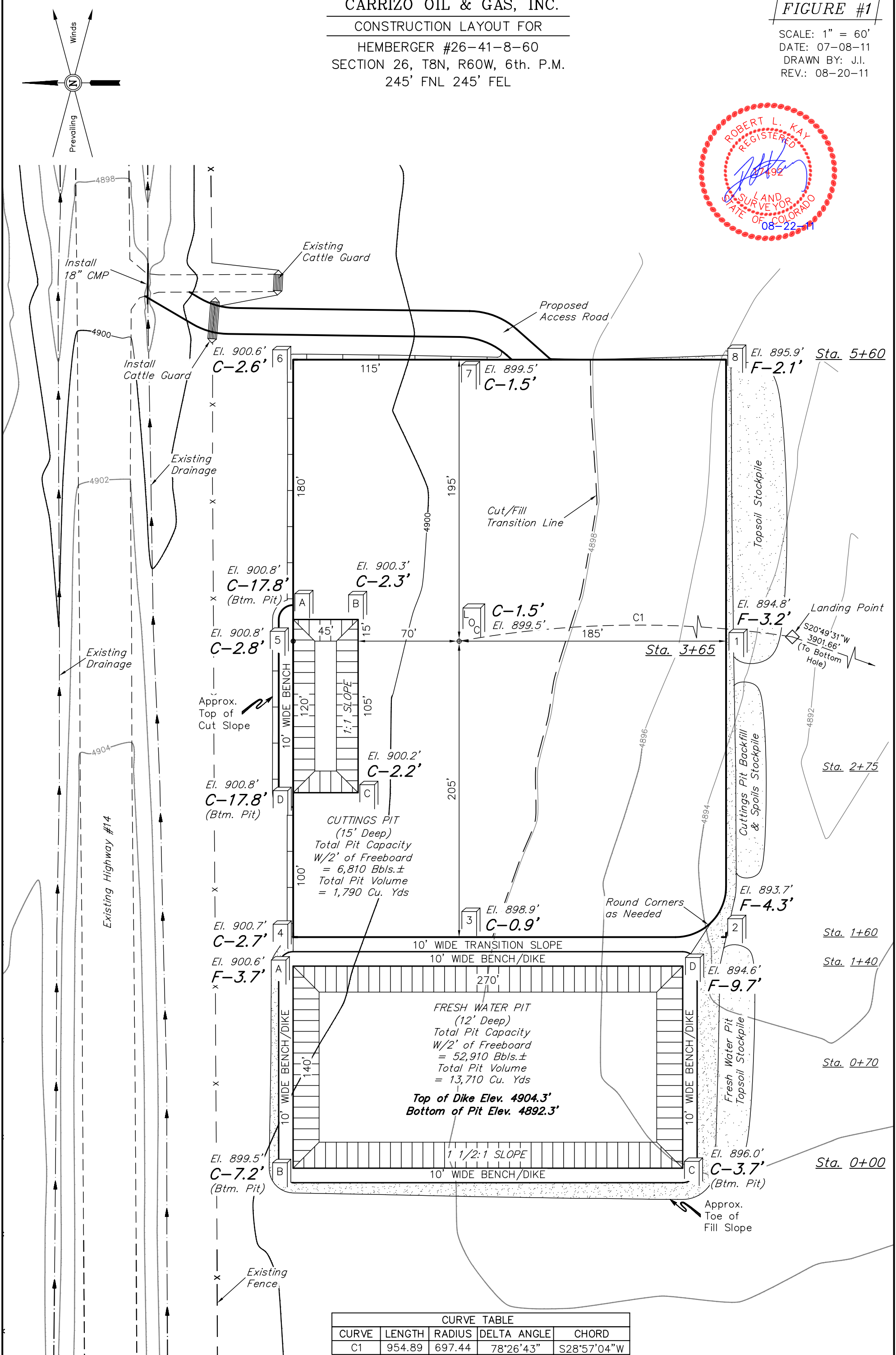


CARRIZO OIL & GAS, INC.  
CONSTRUCTION LAYOUT FOR  
HEMBERGER #26-41-8-60  
SECTION 26, T8N, R60W, 6th. P.M.  
245' FNL 245' FEL

FIGURE #1

SCALE: 1" = 60'  
DATE: 07-08-11  
DRAWN BY: J.I.  
REV.: 08-20-11



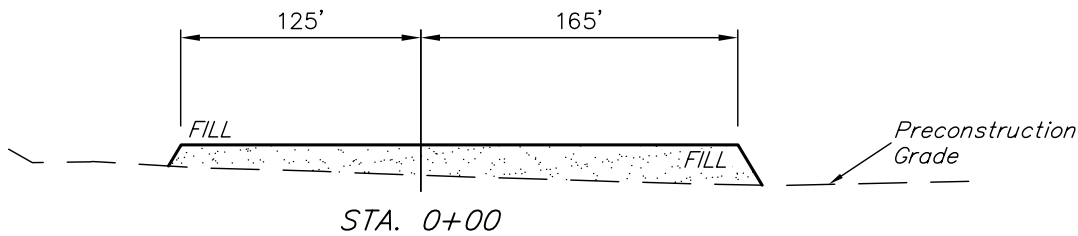
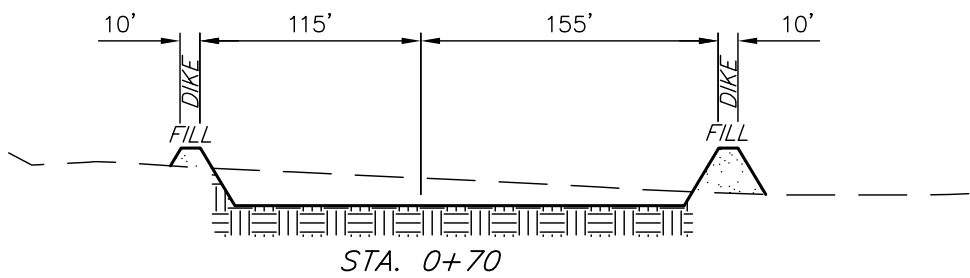
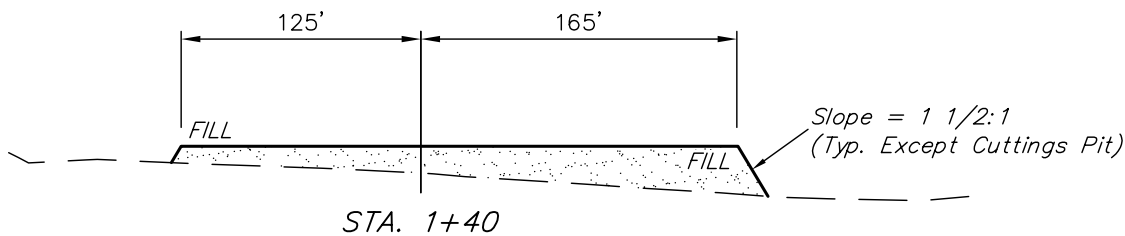
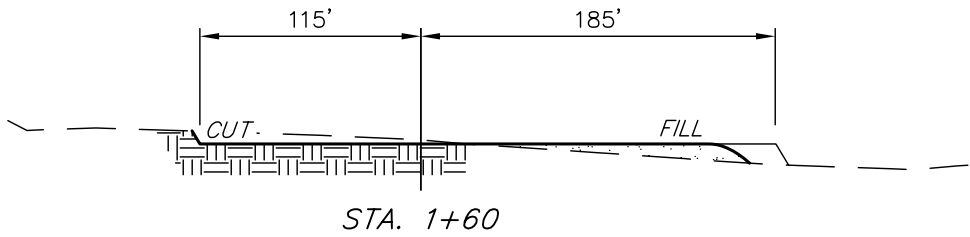
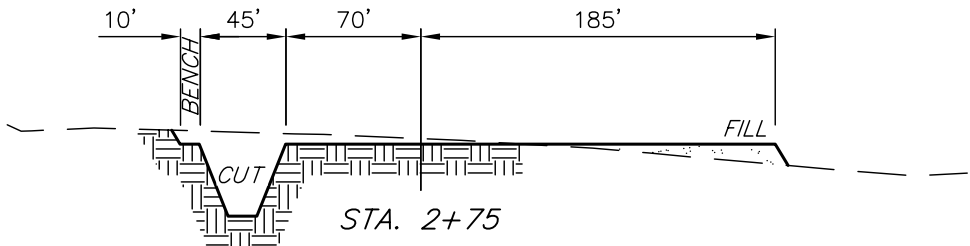
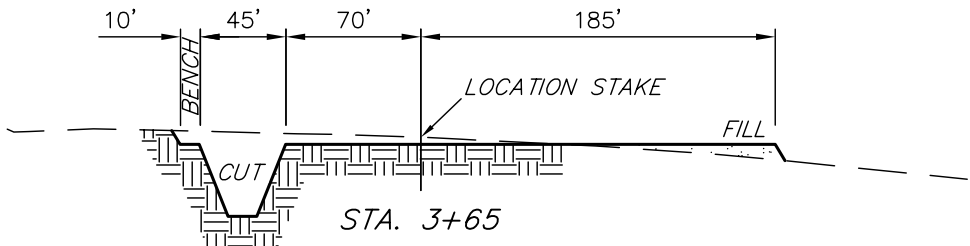
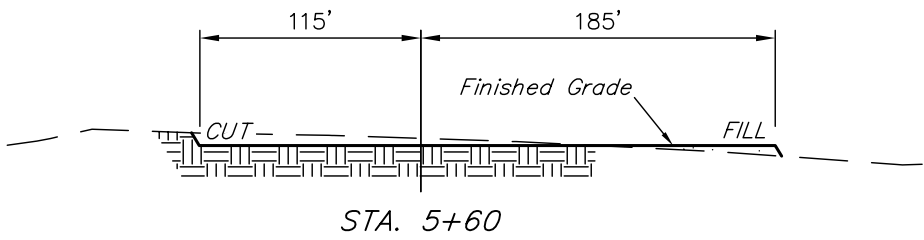
CURVE TABLE				
CURVE	LENGTH	RADIUS	DELTA ANGLE	CHORD
C1	954.89	697.44	78°26'43"	S28°57'04"W

Elev. Ungraded Ground At Loc. Stake = 4899.5'  
FINISHED GRADE ELEV. AT LOC. STAKE = 4898.0'

1" = 40'  
X-Section  
Scale  
1" = 100'  
DATE: 07-08-11  
DRAWN BY: J.I.

CARRIZO OIL & GAS, INC.  
CONSTRUCTION LAYOUT CROSS SECTIONS FOR  
HEMBERGER #26-41-8-60  
SECTION 26, T8N, R60W, 6th. P.M.  
245' FNL 245' FEL

FIGURE #2



APPROXIMATE PAD YARDAGES

(6") Topsoil Stripping	=	2,390 Cu. Yds.
Remaining Location	=	5,080 Cu. Yds.
TOTAL CUT	=	7,470 CU.YDS.
FILL	=	4,180 CU.YDS.
EXCESS MATERIAL	=	3,290 Cu. Yds.
Topsoil & Pit Backfill	=	3,290 Cu. Yds.
(1/2 Pit Vol.)		
EXCESS UNBALANCE	=	0 Cu. Yds.
(After Interim Rehabilitation)		

APPROXIMATE FRESH WATER PIT YARDAGES

(6") Topsoil Stripping	=	1,120 Cu. Yds.
Remaining Location	=	4,960 Cu. Yds.
TOTAL CUT	=	6,080 CU.YDS.
FILL	=	4,960 CU.YDS.
EXCESS MATERIAL	=	1,120 Cu. Yds.
Topsoil	=	1,120 Cu. Yds.
EXCESS UNBALANCE	=	0 Cu. Yds.
(After Interim Rehabilitation)		

NOTE:

Topsoil should not be Stripped Below Finished Grade on Substructure Area.

\* NOTE: FILL QUANTITY INCLUDES 5% FOR COMPACTION

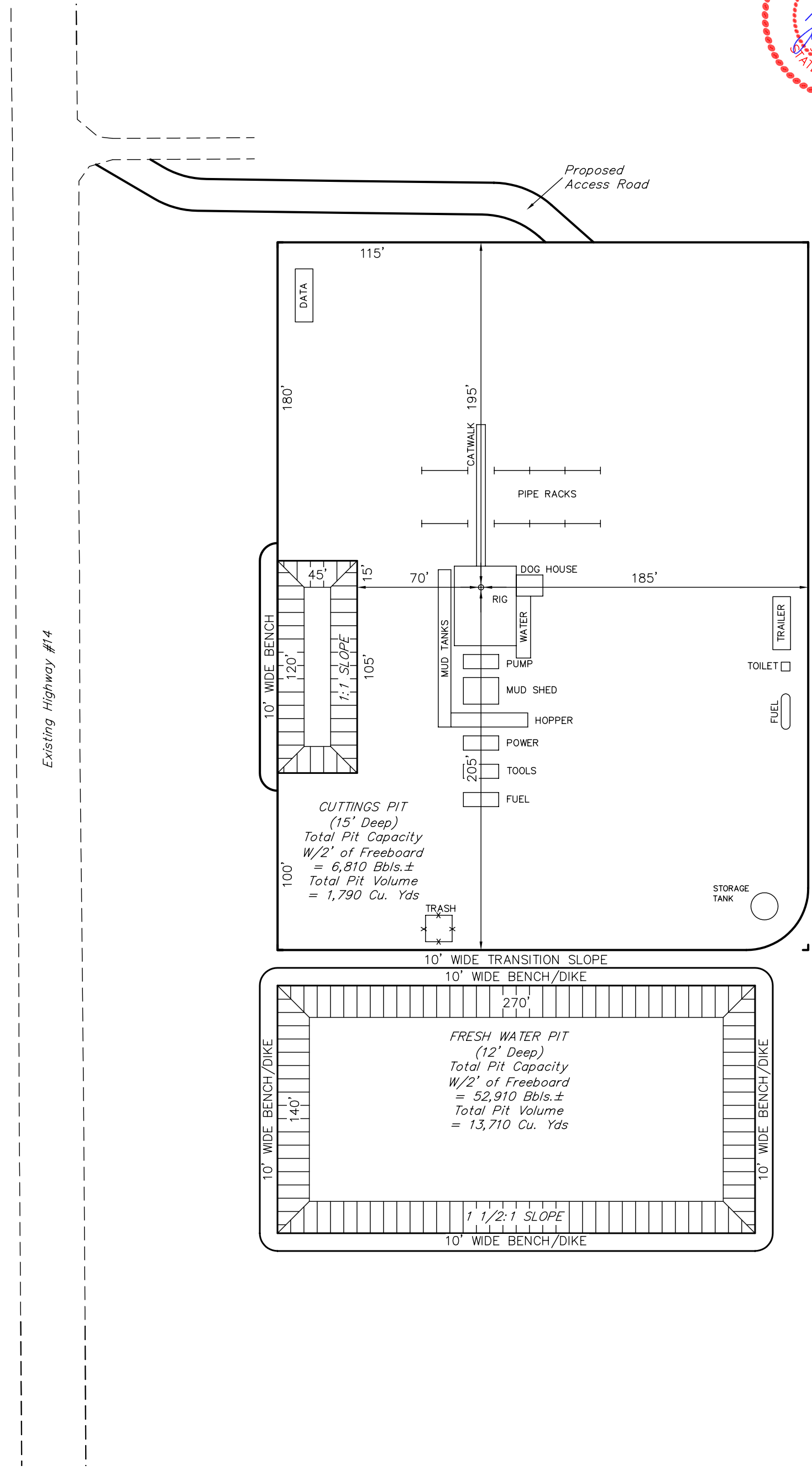
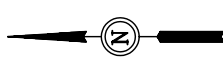
APPROXIMATE ACREAGES

WELL SITE DISTURBANCE = ± 4.483 ACRES  
ACCESS ROAD DISTURBANCE = ± 0.203 ACRES  
TOTAL = ± 4.686 ACRES

UINTAH ENGINEERING & LAND SURVEYING  
85 So. 200 East \* Vernal, Utah 84078 \* (435) 789-1017

CARRIZO OIL & GAS, INC.  
TYPICAL RIG LAYOUT FOR  
HEMBERGER #26-41-8-60  
SECTION 26, T8N, R60W, 6th. P.M.  
245' FNL 245' FEL

FIGURE #3  
SCALE: 1" = 60'  
DATE: 07-08-11  
DRAWN BY: J.I.



# CARRIZO OIL & GAS, INC.

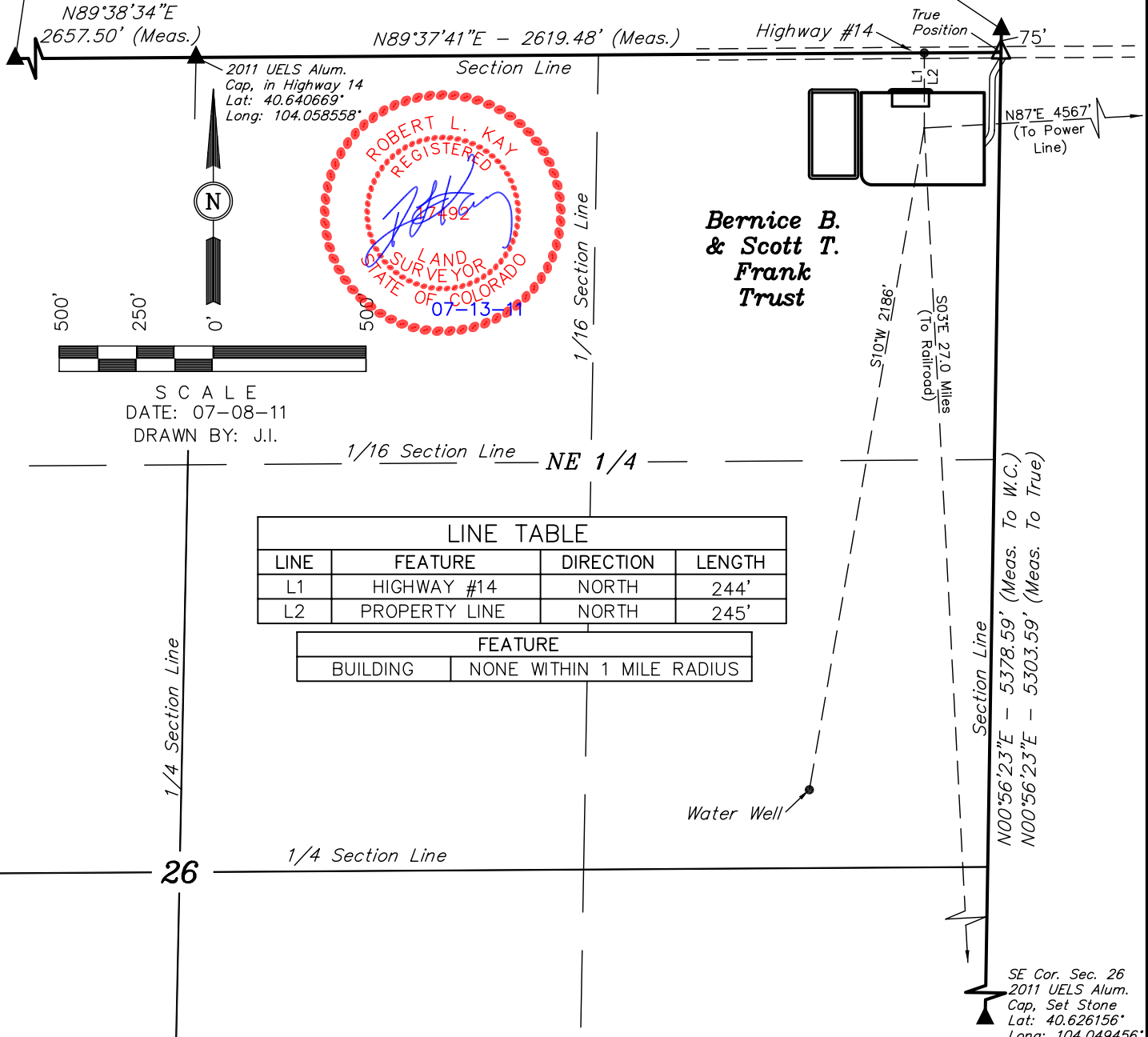
## LOCATION DRAWING FOR

HEMBERGER #26-41-8-60  
SECTION 26, T8N, R60W, 6th. P.M.  
245' FNL 245' FEL

FIGURE #5

NW Cor. Sec. 26  
2011 UELS Alum.  
Cap, Road Intersection  
Lat: 40.640631°  
Long: 104.068131°

W.C.  
2008 Private Alum.  
Cap, PLS#26964  
Lat: 40.640911°  
Long: 104.049114°



### PLANT COMMUNITY

- ☐ DISTURBED GRASSLAND
- ☐ NATIVE GRASSLAND
- ☐ SHRUB LAND
- ☐ PLAINS RIPARIAN
- ☐ MOUNTAIN RIPARIAN
- ☐ FOREST LAND
- ☐ WETLANDS AQUATIC
- ☐ ALPINE
- ☐ OTHER (Describe): \_\_\_\_\_

### CURRENT LAND USE

- CROP LAND: ☐ IRRIGATED ☐ DRY LAND ☐ IMPROVED PASTURE ☐ HAY MEADOW ☐ CRP
- NON-CROP LAND: ☐ RANGELAND ☐ TIMBER ☐ RECREATIONAL ☐ OTHER (Describe) \_\_\_\_\_
- SUBDIVIDED: ☐ INDUSTRIAL ☐ COMMERCIAL ☐ RESIDENTIAL \_\_\_\_\_

### FUTURE LAND USE

- CROP LAND: ☐ IRRIGATED ☐ DRY LAND ☐ IMPROVED PASTURE ☐ HAY MEADOW ☐ CRP
- NON-CROP LAND: ☐ RANGELAND ☐ TIMBER ☐ RECREATIONAL ☐ OTHER (Describe) \_\_\_\_\_
- SUBDIVIDED: ☐ INDUSTRIAL ☐ COMMERCIAL ☐ RESIDENTIAL \_\_\_\_\_