

EXXONMOBIL CORPORATION

HOUSTON, Texas

PCU 296-6B9

H&P215

Post Job Summary

Cement Production Casing

Date Prepared: July 29, 2011
Version: 1

Service Supervisor: DAVIS, CODY

Submitted by: Charli Brown

HALLIBURTON

HALLIBURTON

Wellbore Geometry

Job Tubulars					MD		TVD		Excess	Shoe Joint Length
Type	Description	Size in	ID in	Wt lbm/ft	Top ft	Bottom ft	Top ft	Bottom ft	%	ft
Casing	Production Casing	4.50	3.826	15.10	0.00	13,949.00	0.00	13,907.00		80.00
Casing	Intermediate Casing	7.00	6.276	26.00	0.00	9,998.00	0.00	9,956.00		80.00
Open Hole Section	Production Open Hole		6.125		9,998.00	13,949.00	9,956.00	13,907.00	350.00	

Pumping Schedule

Stage /Plug #	Fluid #	Fluid Type	Fluid Name	Surface Density lbm/gal	Avg Rate bbl/min	Surface Volume	Downhole Volume
1	1	Spacer	TUNED SPACER III	10.00	6.00	40.0 bbl	40.0 bbl
1	2	Cement Slurry	Lightweight Lead Cement	10.50	6.00	215.0 sacks	215.0 sacks
1	3	Cement Slurry	Lightweight Tail Cement	12.00	6.00	680.0 sacks	680.0 sacks
1	4	Spacer	NaCl Displacement	8.44	6.00	197.0 bbl	197.0 bbl

Fluids Pumped

Stage/Plug # 1 Fluid 1: TUNED SPACER III
TUNED SPACER III - SBM (483826)
59.8 lbm/bbl Barite

Fluid Density: 10.00 lbm/gal
Fluid Volume: 40.00 bbl

Stage/Plug # 1 Fluid 2: Lightweight Lead
Cement
TUNED LIGHT (TM) SYSTEM
0.43 lbm HR-601

Fluid Weight: 10.50 lbm/gal
Slurry Yield: 2.26 ft³/sack
Total Mixing Fluid: 10.10 Gal
Surface Volume: 215.0 sacks
Calculated Fill: 3,173.51 ft
Calculated Top of Fluid: 7,206.00 ft
Pump Rate: 6.00 bbl/min

Stage/Plug # 1 Fluid 3: Lightweight Tail
Cement
VARICEM (TM) CEMENT
0.21 % Fe-2

Fluid Weight: 12.00 lbm/gal
Slurry Yield: 2.18 ft³/sack
Total Mixing Fluid: 12.12 Gal
Surface Volume: 680.0 sacks
Calculated Fill: 3,569.49 ft
Calculated Top of Fluid: 10,379.51 ft

Stage/Plug # 1 Fluid 4: NaCl Displacement
DUMMY MUD / FLUSH / SPACER SBC MATERIAL
7.15 lbm/bbl Salt

Fluid Density: 8.44 lbm/gal
Fluid Volume: 197.00 bbl
Pump Rate: 6.00 bbl/min

HALLIBURTON

Job Summary

Job Information

Job Start Date	7/28/2011 4:05:00 PM
Job MD	13,967.0 ft
Job TVD	13,967.0 ft
Height of Plug Container/Swage Above Rig Floor	3.0 ft
Surface Temperature at Time of Job	85 degF
Mud Type	Water Based Mud
Name of Mud Company	BAROID DRILLING FLUIDS
Actual Mud Density	10 lbm/gal
Time Circulated before job	3.00 hour(s)
Mud Volume Circulated	2.00 bbl
Units of Gas Detected While Circulating	2500 API Gas Units
Pipe Movement During Hole Circulation	Rotated
Time From End Mud Circ. to Job Start	30.00 minute
Pipe Movement During Cementing	Rotated
Calculated Displacement	197.22 bbl
Job Displaced by (rig/halco)	Cement Unit HP Pumps
Annular flow Before Job? (Water/Gas)	Unknown
Annular flow After Job? (Water/Gas)	Unknown

Cementing Equipment

Number of Centralizers Used	140
Pipe Centralization	Bottom Joints and Through Production Int
Brand of Float Equipment Used	Weatherford
Did Float Equipment Hold?	Yes
Plug Set Used	Yes
Brand of Plug Set Used	Weatherford
Did Plugs Bump?	Yes
Calculated Pressure to Bump Plugs	2,500 PSI

Service Supervisor Reports

Job Log

Date/Time	Activity Code	Pump Rate	Volume	Pressure (psig)	Comments
07/27/2011 22:00	Call Out				
07/27/2011 23:00	Depart Yard Safety Meeting				JOURNEY MANAGMENT
07/27/2011 23:15	Crew Leave Yard				
07/28/2011 05:30	Arrive at Location from Service Center				RIG RUNNING CASING
07/28/2011 05:40	Safety Meeting - Assessment of Location				OVER HEAD LINES RED ZONES
07/28/2011 05:50	Other				MEET W/ CO MAN AND GO OVER NUMBERS
07/28/2011 06:00	Other				SPOT TRUCKS USING TWO SPOTTERS
07/28/2011 06:10	Safety Meeting - Pre Rig-Up				PINCH POINTS RES ZONES LINE OF FIRE
07/28/2011 06:15	Rig-Up Equipment				
07/28/2011 06:49	Shutdown				
07/28/2011 08:00	Rig-Up Completed				
07/28/2011 08:05	Other				WAITING ON RIG TO RUN CASING
07/28/2011 11:45	Safety Meeting				MEETING WITH TESCO CREW AND EXXON SUPERVISORS TO GO OVER JOB PROCESS FOR THE ROTATING CEMENT HEAD
07/28/2011 12:15	Other				RIG FINISHED CIRCULATING 3BOTTOMS UP, HES CREW FINISHING RIG UP TO THE FLOOR
07/28/2011 12:30	Safety Meeting - Pre Job				MEETING TO COVER JSA OF RCH AND JOB
07/28/2011 12:30	Other				E-TECH ARRIVED ON LOCATION TO FIX FLECS COMPUTER SCREEN

HALLIBURTON

Date/Time	Activity Code	Pump Rate	Volume	Pressure (psig)	Comments
07/28/2011 14:48	Other				SAFETY MEETING RIG UP COMPLETE, FLECS SCREEN FIXED AND TRUCK TESTED FOR PROPER READING OF OUTPUTS
07/28/2011 15:15	Other				SECOND PUMP TRUCK ARRIVED ON LOCATION
07/28/2011 16:04	Drop Bottom Plug				
07/28/2011 16:05	Other				START JOB
07/28/2011 16:07	Pump Water				PUMPED 2BBLS TO FILL LINES
07/28/2011 16:09	Pressure Test				LOW PRESSURE TEST TO 250PSI; LOST 3PSI LESS THAN 1%, TEST GOOD
07/28/2011 16:11	Pressure Test				HIGH PRESSURE TEST TO 4000PSI, (MAX RATING OF THE RCH IS 5000PSI); LOST 36PSI APPROXIMATELY 1%, TEST GOOD
07/28/2011 16:56	Pump Spacer	5	40		PUMPED 42.27BBLS AT 10.3PPG TUNED SPACER III
07/28/2011 17:12	Pump Lead Cement	5	86.5		PUMPED 82.6BBLS TUNED LIGHT AT 10.5PPG, 2.26 CUBIC FT/SK 10.1GAL/SK 215SKS
07/28/2011 17:29	Pump Tail Cement	5	264		PUMPED 264BBLS TAIL CMT AT 12PPG 2.17 CUBIC FT/SK 11.95GAL/SK 680SKS
07/28/2011 18:19	Slow Rate				SLOWED RATE TO 2.5BPM TO KEEP CEMENT AT PROPER DENSITY
07/28/2011 18:19	Pump Displacement - End				
07/28/2011 18:22	Clean Lines				SWAP AND WASH LINES TO THE PIT TO PREVENT CEMENT FROM INTERFERING WITH BALL LAUNCHING.
07/28/2011 18:25	Other				DROP BALL
07/28/2011 18:25	Pump Displacement - Start	0.8			PUMP 2% SODIUM CHLORIDE AT 8.44PPG RATE: 0.80 BPM

HALLIBURTON

Date/Time	Activity Code	Pump Rate	Volume	Pressure (psig)	Comments
07/28/2011 18:27	Other				BALL SEATED AT 2250PSI SHEARED PINS AT 2700PSI
07/28/2011 18:27	Drop Top Plug				
07/28/2011 18:27	Pump Displacement - Start	6	197.1		PUMP 2% SODIUM CHLORIDE AT 8.44PPG
07/28/2011 18:31	Displ Reached Cmmt	6			DISPLACEMENT CAUGHT CEMENT WITH 30BBLS AWAY
07/28/2011 18:48	Other	5			SLOW RATE TO 5BPM WITH 130BBLS DISPLACEMENT GONE
07/28/2011 18:53	Other	4			SLOWED DISPLACEMENT TO 4BPM
07/28/2011 19:00	Other	2			SLOWED DISPLACEMENT TO 2BPM
07/28/2011 19:05	Bump Plug	2		2050.0	PLUG BUMPED AT 2050PSI
07/28/2011 19:07	Check Floats				FLOATS HELD WITH 1.75BBLS BACK TO SURFACE
07/28/2011 19:10	Job Complete				
07/28/2011 19:11	Post-Job Safety Meeting (Pre Rig-Down)				PINCH POINTS RED ZONES LINE OF FIRE
07/28/2011 19:30	Rig-Down Equipment				
07/28/2011 21:00	Rig-Down Completed				
07/28/2011 21:15	Safety Meeting - Departing Location				JOURNEY MANAGMENT
07/28/2011 21:30	Depart Location for Service Center or Other Site				

The Road to Excellence Starts with Safety

Sold To #: 331699	Ship To #: 2862378	Quote #:	Sales Order #: 8333468
Customer: EXXONMOBIL CORPORATION	Customer Rep: ., MIKE		
Well Name: PCU	Well #: 296-6B9	API/UWI #: 05103115320000	
Field: PICEANCE CREEK FIELD	City (SAP): MEEKER	County/Parish: Rio Blanco	State: Colorado
Legal Description: Section 6 Township 2S Range 96W			
Contractor: H&P	Rig/Platform Name/Num: H&P215		
Job Purpose: Cement Production Casing			
Well Type: Development Well	Job Type: Cement Production Casing		
Sales Person: MCNARY, GEORGE	Srvc Supervisor: DAVIS, CODY	MBU ID Emp #: 446891	

Job Personnel

HES Emp Name	Exp Hrs	Emp #	HES Emp Name	Exp Hrs	Emp #	HES Emp Name	Exp Hrs	Emp #
DAVIS, CODY R		446891	DEARING, KEN A		239372	FUCHS, ANDREW Peter		489821
JEREZ, CHRISTOPHER D		265884	WHITE, KAMEREON V		475856	WILKISON, KEVIN Diverne		491065

Equipment

HES Unit #	Distance-1 way	HES Unit #	Distance-1 way	HES Unit #	Distance-1 way	HES Unit #	Distance-1 way

Job Hours

Date	On Location Hours	Operating Hours	Date	On Location Hours	Operating Hours	Date	On Location Hours	Operating Hours
TOTAL			Total is the sum of each column separately					

Job

Job Times

Formation Name					Date	Time	Time Zone
Formation Depth (MD)	Top		Bottom		Called Out	27 - Jul - 2011	22:00 MST
Form Type		BHST			On Location	28 - Jul - 2011	05:30 MST
Job depth MD	13967. ft	Job Depth TVD	13967. ft		Job Started	28 - Jul - 2011	16:05 MST
Water Depth		Wk Ht Above Floor	3. ft		Job Completed	28 - Jul - 2011	19:10 MST
Perforation Depth (MD)	From		To		Departed Loc	28 - Jul - 2011	21:00 MST

Well Data

Description	New / Used	Max pressure psig	Size in	ID in	Weight lbm/ft	Thread	Grade	Top MD ft	Bottom MD ft	Top TVD ft	Bottom TVD ft
Production Open Hole				6.125				9998.	13949.	9956.	13907.
Intermediate Casing	Unknown		7.	6.276	26.	HYDRIL - SERIES 500 TYPE 513	P-110	.	9998.	.	9956.
Production Casing	Unknown		4.5	3.826	15.1	LTC	P-110	.	13949.	.	13907.

Tools and Accessories

Type	Size	Qty	Make	Depth	Type	Size	Qty	Make	Depth	Type	Size	Qty	Make
Guide Shoe					Packer					Top Plug			
Float Shoe					Bridge Plug					Bottom Plug			
Float Collar					Retainer					SSR plug set			
Insert Float										Plug Container			
Stage Tool										Centralizers			

Miscellaneous Materials

Gelling Agt		Conc		Surfactant		Conc		Acid Type		Qty		Conc	%
Treatment Fld		Conc		Inhibitor		Conc		Sand Type		Size		Qty	

Fluid Data									
Stage/Plug #: 1									
Fluid #	Stage Type	Fluid Name	Qty	Qty uom	Mixing Density lbm/gal	Yield ft ³ /sk	Mix Fluid Gal/sk	Rate bbl/min	Total Mix Fluid Gal/sk
1	TUNED SPACER III	TUNED SPACER III - SBM (483826)	40.00	bbl	10.	.0	.0	6.0	
	38.32 gal/bbl	FRESH WATER							
	59.8 lbm/bbl	BARITE, 100 LB SK (100003680)							
2	Lightweight Lead Cement	TUNED LIGHT (TM) SYSTEM (452984)	215.0	sacks	10.5	2.26	10.1	6.0	10.1
	0.43 lbm	HR-601, 50 LB BAG (101328348)							
	10.1 Gal	FRESH WATER							
3	Lightweight Tail Cement	VARICEM (TM) CEMENT (452009)	680.0	sacks	12.	2.17	12.12	6.0	12.12
	12.12 Gal	FRESH WATER							
	0.21 %	FE-2 (100001615)							
4	NaCl Displacement		197.00	bbl	8.44	.0	.0	6.0	
	7.15 lbm/bbl	SALT, 100 LB BAG (100003652)							

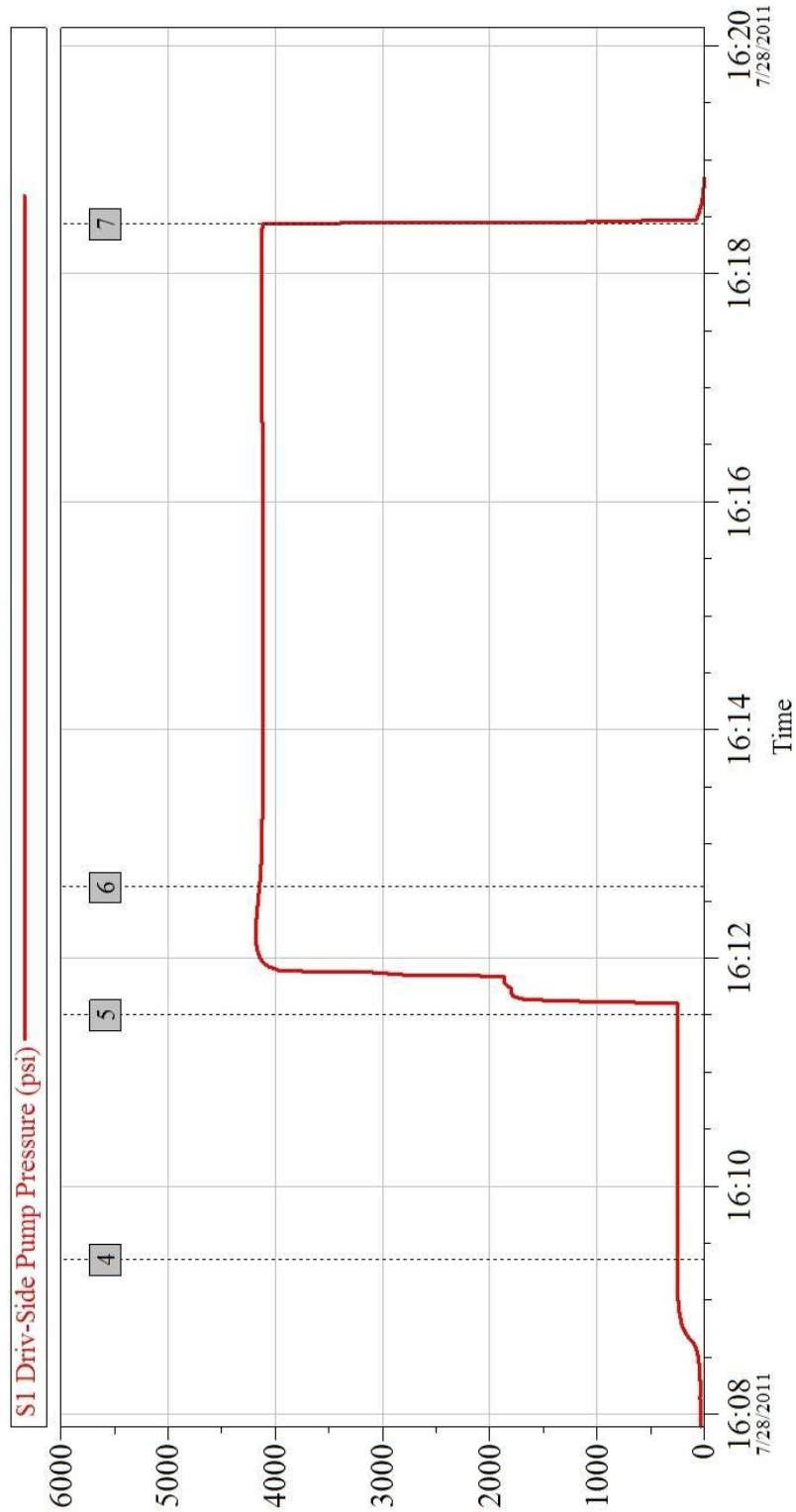
Calculated Values		Pressures		Volumes			
Displacement		Shut In: Instant		Lost Returns		Cement Slurry	
Top Of Cement		5 Min		Cement Returns		Actual Displacement	
Frac Gradient		15 Min		Spacers		Load and Breakdown	

Rates							
Circulating		Mixing		Displacement		Avg. Job	
Cement Left In Pipe	Amount	80 ft	Reason	Shoe Joint			
Frac Ring # 1 @	ID	Frac ring # 2 @	ID	Frac Ring # 3 @	ID	Frac Ring # 4 @	ID

The Information Stated Herein Is Correct	Customer Representative Signature
--	-----------------------------------

Data Acquisition

ExxonMobil PCU 296-6B9 4.5" Production Pressure Test

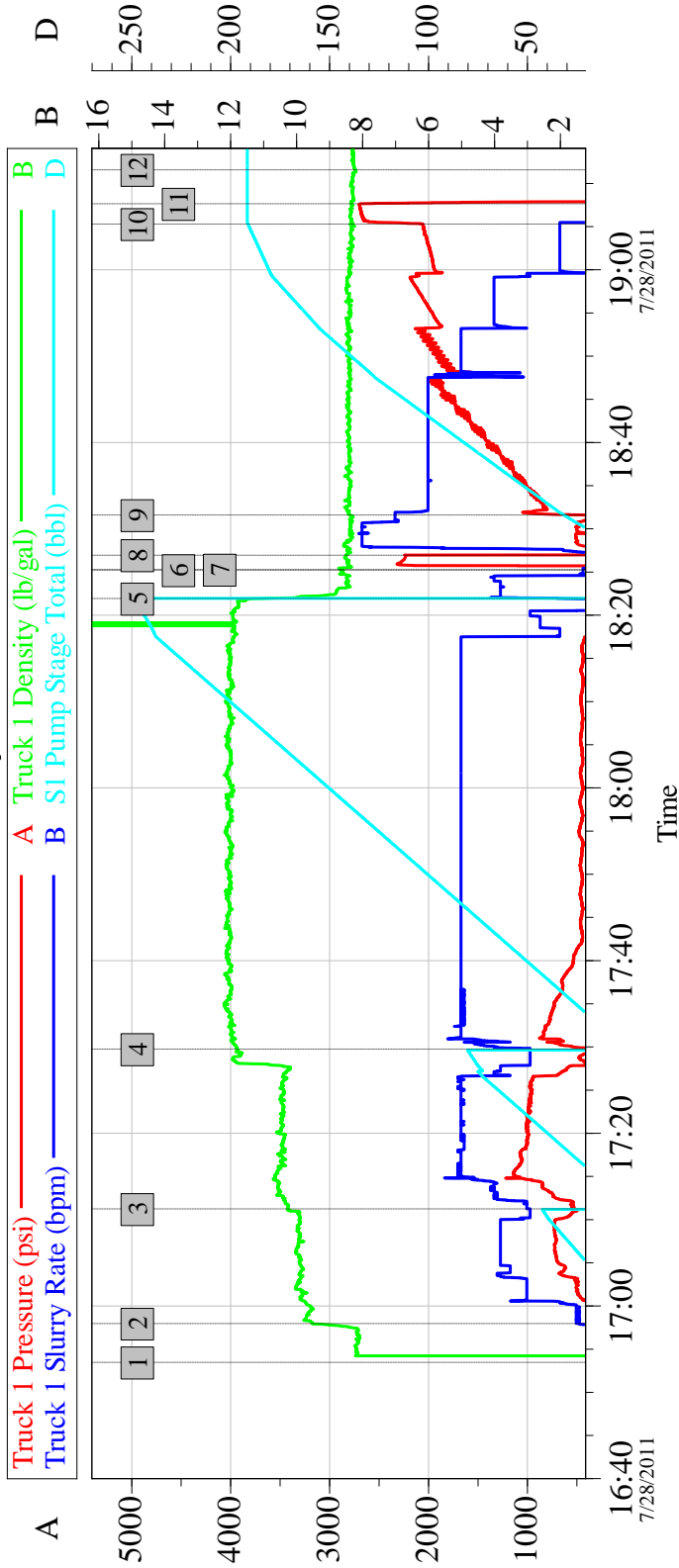


Global Event Log			
Intersection		SDPP	
4	Start Low Pressure Test	16:09:21	250.0
5	End Low Pressure Test	16:11:30	247.0
6	Start High Pressure Test	16:12:37	4148
7	End High Pressure Test	16:18:26	4112

Customer:	Job Date: 28-Jul-2011	Sales Order #:
Well Description:	UWI:	

OptiCem v6.4.9
28-Jul-11 16:21

ExxonMobil PCU 296-6B9 4.5" Production Job Summary Chart



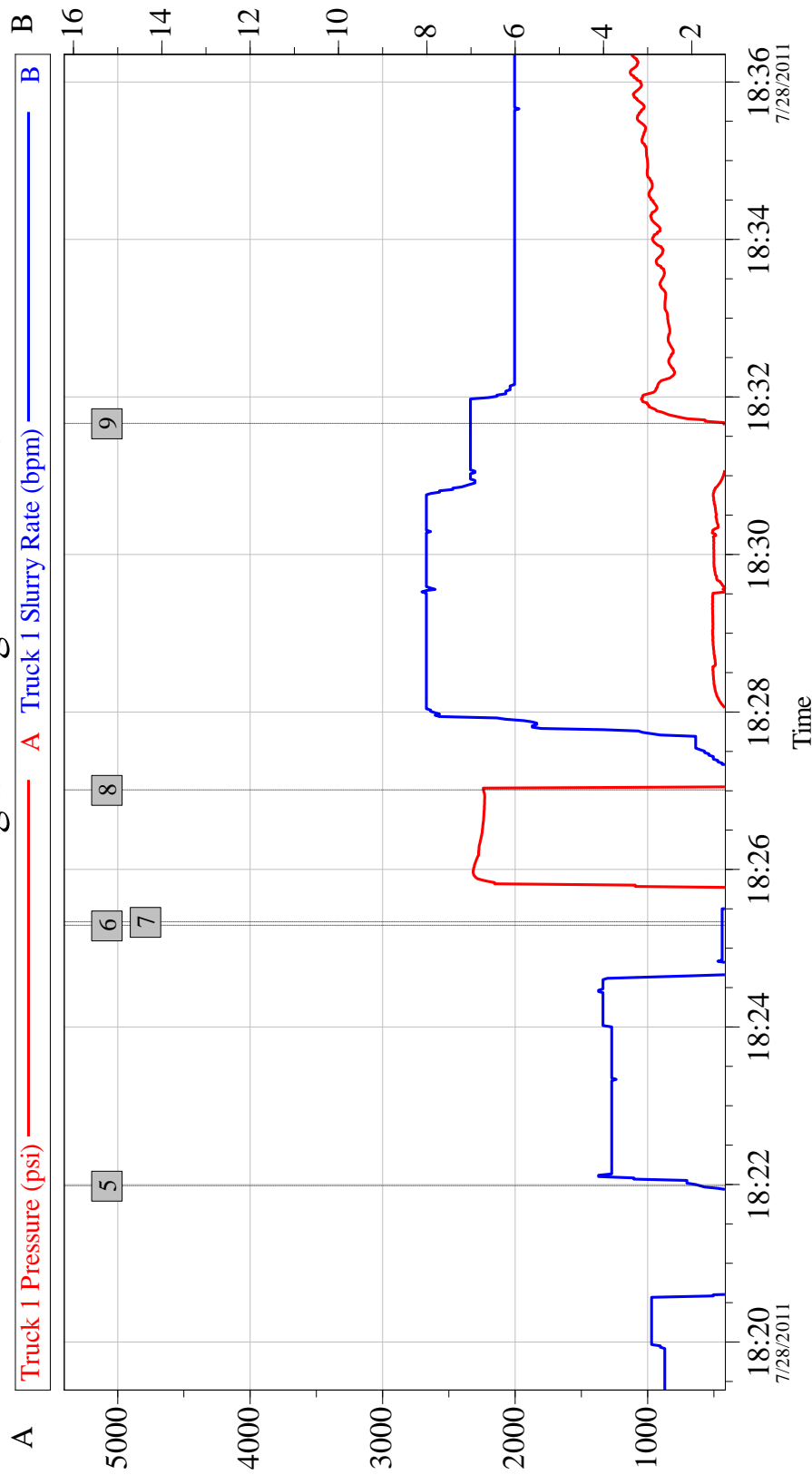
Global Event Log

1	Starting Job	16:53:32	2	Pump Tuned Spacer at 10.3PPG	16:58:02
3	Pump Tuned Light at 10.5PPG	17:11:19	4	Pump Tail Cement at 12PPG	17:29:49
5	Clean Lines	18:22:00	6	Drop Ball	18:25:18
7	Pump Displacement	18:25:21	8	Shear Pins	18:27:01
9	Displacement Caught Cement	18:31:40	10	Bump Plug	19:05:22
11	Check Floats	19:07:43	12	Job Complete	19:11:39

Customer: ExxonMobil	Job Date: 28-Jul-2011	Sales Order #: 8333468
Well Description: PCU 296-6B9	Service Leader: Ken Dearing	Elite Number: 11076824
Job Type: 4.5" Production	Service Supervisor: Cody Davis	

OptiCem v6.4.9
28-Jul-11 19:25

ExxonMobil PCU 296-6B9 4.5" Production Ball Launching/Shearing Pressure Chart



Global Event Log

5 Clean Lines	18:22:00	6 Drop Ball	18:25:18	7 Pump Displacement	18:25:21
8 Shear Pins	18:27:01	9 Displacement Caught Cement	18:31:40		

Customer: ExxonMobil	Job Date: 28-Jul-2011	Sales Order #: 8333468
Well Description: PCU 296-6B9	Service Leader: Ken Dearing	Elite Number: 11076824
Job Type: 4.5" Production	Service Supervisor: Cody Davis	OptiCem v6.4.9 28-Jul-11 19:48

HALLIBURTON

Lab Data

Cementing Rockies, Vernal

LAB RESULTS - Lead

Job Information

Request/Slurry	163293/1	Rig Name	H&P 215	Date	19/JUL/2011
Submitted By	Isaac Whorl	Job Type	Production Casing	Bulk Plant	Vernal
Customer	ExxonMobil	Location	Rio Blanco	Well	PCU 296-6B9

Well Information

Casing/Liner Size	4 1/2"	Depth MD	13949 ft	BHST	293 F
Hole Size	6 1/8"	Depth TVD	13907 ft	BHCT	228 F

Drilling Fluid Information

Mud Company	Type	Density	9.3 PPG	PV/YP
-------------	------	---------	---------	-------

Cement Information - Lead Design

Conc	UOM	Cement/Additive	Sample Type	Sample Date	Lot No.	Cement Properties	
		Tuned Light				Slurry Density	10.50 PPG
						Slurry Yield	2.26 ft3/sk
						Water Requirement	10.13 GPS
10.92	%	> HGS 8000X (PB)	Bulk	Jul 20, 2011			
13	%	> Silicalite - Compacted	Bulk	Jul 20, 2011			
90	%	> TXI Lightweight	Bulk	Jul 20, 2011			
100.00	% BWOC	Cement Blend	Bulk	Jul 20, 2011			
0.100	lb/sk	CFR-3	Bulk	Jul 20, 2011			
0.600	lb/sk	D-Air 3000	Bulk	Jul 20, 2011			
0.700	lb/sk	HALAD-344 (PB)	Bulk	Jul 20, 2011			
0.430	lb/sk	HR-601	Bulk	Jul 20, 2011			
10.13	gal/sack	Field (Fresh) Water	Lab	Apr 12, 2011			

Operation Test Results Request ID 163293/1

UCA Comp. Strength, Request Test ID:1633411, Historical Data

End Temp (°F)	Pressure (psi)	50 psi (hh:mm)	500 psi (hh:mm)	12 hr CS (psi)	24 hr CS (psi)	48 hr CS (psi)	End CS (psi)	End Time (hrs)
261	3,000	03:37	03:53	710	848	970	982	72

Thickening Time, Request Test ID:1633388, Historical Data

Temp (°F)	Pressure (psi)	Reached in (min)	Start BC	30 Bc (hh:mm)	50 Bc (hh:mm)	70 Bc (hh:mm)	100 Bc (hh:mm)
228	6,719	49	5	03:00	03:00	03:00	03:00

Thickening Time, Request Test ID:1638019, Historical Data

Temp (°F)	Pressure (psi)	Batch Mix (min)	Reached in (min)	Start BC	30 Bc (hh:mm)	50 Bc (hh:mm)	70 Bc (hh:mm)	100 Bc (hh:mm)
228	6,719	0	49	5	03:04	03:04	03:04	03:17

20m Sd after 1h:52m pump time, no change in Bc's (4 into and out of Sd)

Mixability (0 - 5) - 0 is not mixable, Request Test ID:1633407, Historical Data

Mixability rating (0 - 5)

5

HALLIBURTON

Marsh Funnel, Request Test ID:1633412, Historical Data

Volume [ml]	Time [Sec]	Foam Quality
250	28	0

Free Water, Request Test ID:1633410, Historical Data

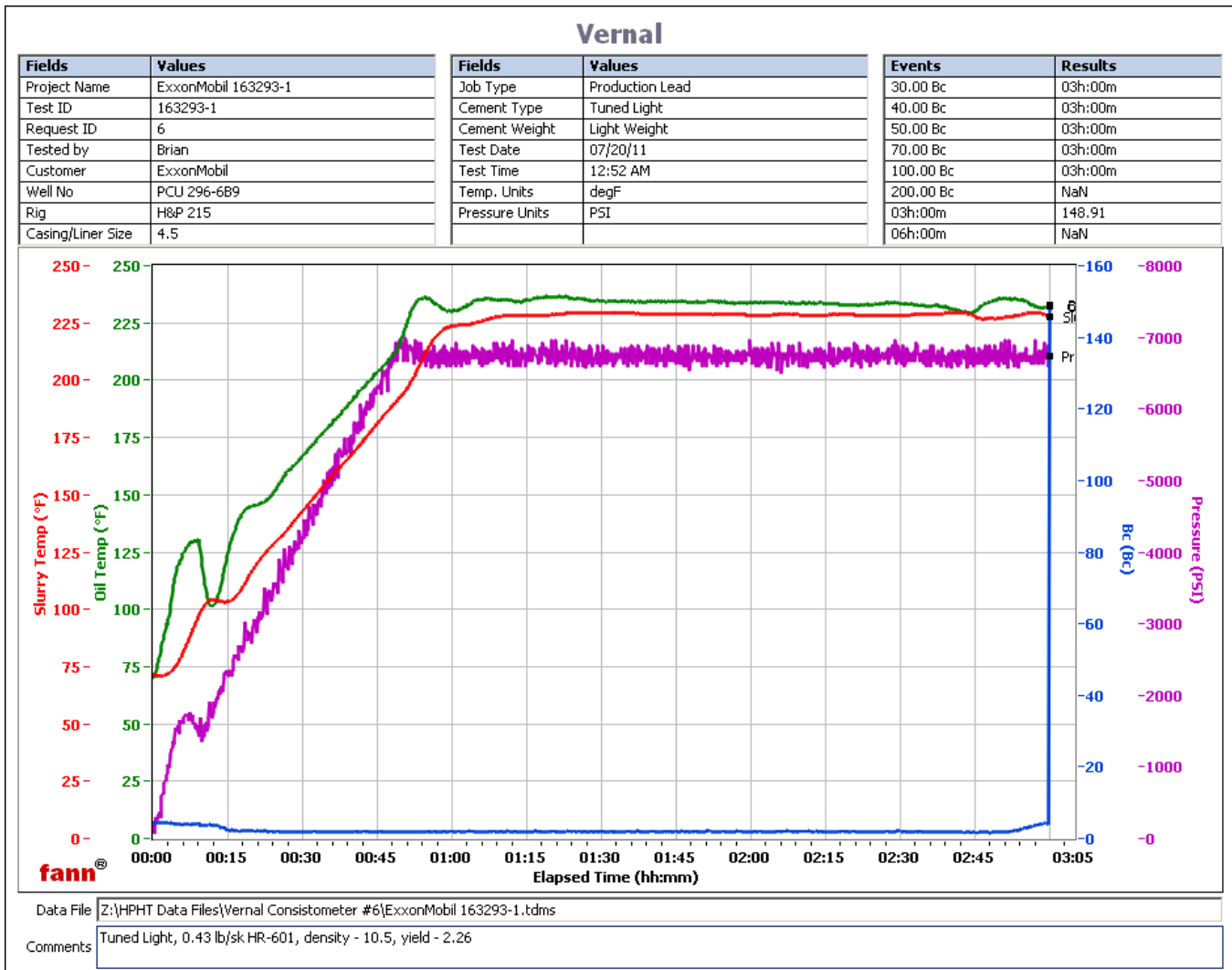
Test Temp (°F)	% FW 45 Inc
180	0
Some Feathering	

API Rheology, Request Test ID:1633409, Historical Data

Temp (°F)	600	300	200	100	60	30	6	3	PV/YP
80	109	62	45	27	20	12	6	6	56.3 / 7.1

API Fluid Loss, Request Test ID:1633408, Historical Data

Test Temp (°F)	Test Pressure (psi)	Test Time (min)	Meas. Vol (< 30 min, cc)	Extr. ISO FL (cc/30 min)
180	1,000	17.1	37	98



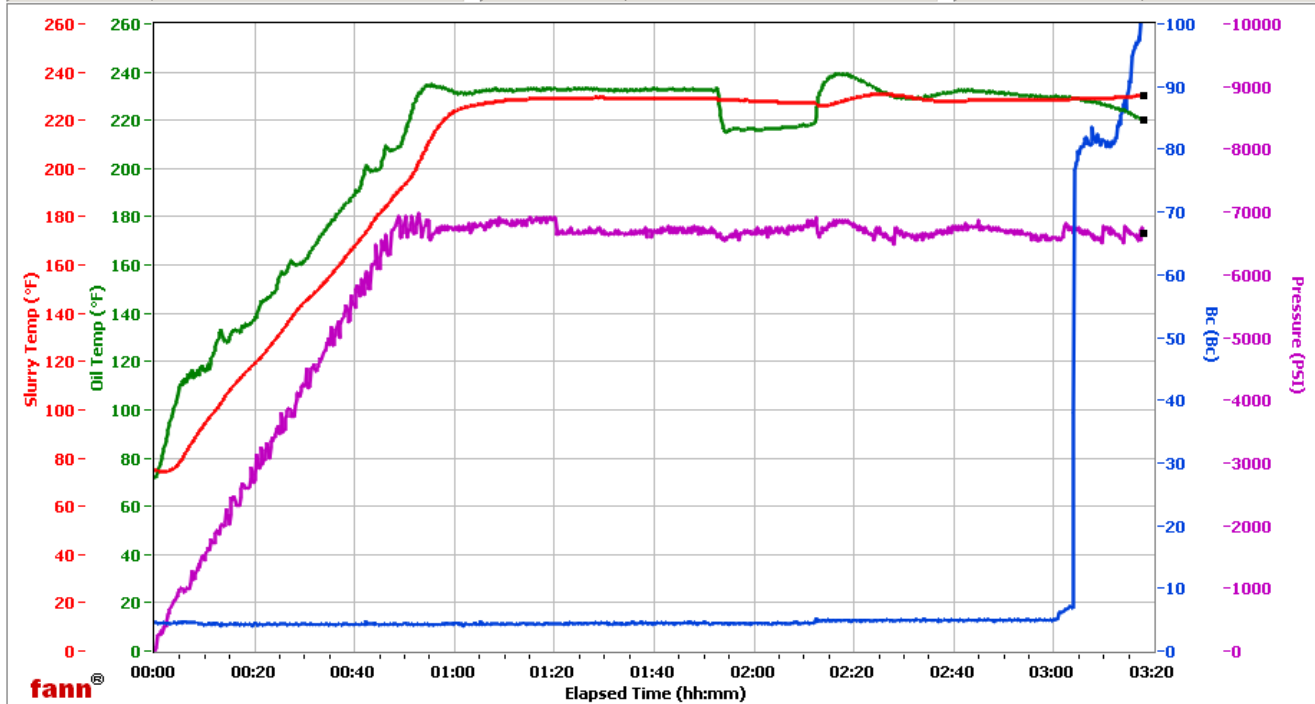
HALLIBURTON

Vernal

Fields	Values
Project Name	Exxonmobil 163293-1A
Test ID	163293-1A
Request ID	HPHT #1
Tested by	D.O.
Customer	Exxonmobil
Well No	PCU 296-6B9
Rig	H&P 215
Casing/Liner Size	4.5

Fields	Values
Job Type	Pro lead
Cement Type	TXI
Cement Weight	Light Weight
Test Date	07/21/11
Test Time	04:40 PM
Temp. Units	degF
Pressure Units	PSI

Events	Results
30.00 Bc	03h:04m
50.00 Bc	03h:04m
60.00 Bc	03h:04m
70.00 Bc	03h:04m
100.00 Bc	03h:17m
200.00 Bc	NaN
02h:11m	4.51
06h:00m	NaN



Data File Z:\HPHT Data Files\Vernal Consistometer #1\Exxonmobil 163293-1A.tdms

Comments 90% TXI, .43 HR-601, 10.5 den, 2.26 yd

Cementing Rockies, Vernal

Job Information

Request/Slurry	163294/1	Rig Name	H&P 215	Date	19/JUL/2011
Submitted By	Isaac Whorl	Job Type	Production Casing	Bulk Plant	Vernal
Customer	ExxonMobil	Location	Rio Blanco	Well	PCU 296-6B9

Well Information

Casing/Liner Size	4 1/2"	Depth MD	13949 ft	BHST	293 F
Hole Size	6 1/8"	Depth TVD	13907 ft	BHCT	228 F

Drilling Fluid Information

Mud Company	Type	Density	9.3 PPG	PV/YP
-------------	------	---------	---------	-------

Cement Information - Tail Design

Conc	UOM	Cement/Additive	Sample Type	Sample Date	Lot No.	Cement Properties	
		VariCem				Slurry Density	12.00 PPG
						Slurry Yield	2.17 ft3/sk
						Water Requirement	11.95 GPS
100.00	% BWOC	TXI Lightweight	Bulk	Jul 20, 2011			
25.000	% BWOC	Silicalite - Compacted	Bulk	Jul 20, 2011			
0.600	% BWOC	HALAD-344 (PB)	Bulk	Jul 20, 2011			
0.600	% BWOC	D-Air 3000	Bulk	Jul 20, 2011			
0.100	% BWOC	Econolite (Powder - PB)	Bulk	Jul 20, 2011			
0.220	% BWOC	Fe-2 (citric acid)	Bulk	Jul 20, 2011			
11.95	gal/sack	Field (Fresh) Water	Lab	Apr 12, 2011			

Operation Test Results Request ID 163294/1

UCA Comp. Strength, Request Test ID:1633402, Historical Data

End Temp (°F)	Pressure (psi)	50 psi (hh:mm)	500 psi (hh:mm)	12 hr CS (psi)	24 hr CS (psi)	48 hr CS (psi)	End CS (psi)	End Time (hrs)
261	3,000	04:06	04:26	1,039	1,143	1,209	1,247	72

Thickening Time, Request Test ID:1633401, Historical Data

Temp (°F)	Pressure (psi)	Reached in (min)	Start BC	30 Bc (hh:mm)	50 Bc (hh:mm)	70 Bc (hh:mm)	100 Bc (hh:mm)
228	6,719	49	10	03:40	03:41	03:41	03:41

Thickening Time, Request Test ID:1638037, Historical Data

Temp (°F)	Pressure (psi)	Batch Mix (min)	Reached in (min)	Start BC	30 Bc (hh:mm)	50 Bc (hh:mm)	70 Bc (hh:mm)	100 Bc (hh:mm)
228	6,719	0	49	5	03:56	03:56	03:56	03:57

20m Sd after 90m pump time. No change in Bc's, 5 into and out of Sd.

Mixability (0 - 5) - 0 is not mixable, Request Test ID:1633406, Historical Data

Mixability rating (0 - 5)

5

HALLIBURTON

Free Water, Request Test ID:1633404, Historical Data

Test Temp (°F) % FW 45 Inc

180 0

No free water and no settling.

API Rheology, Request Test ID:1633403, Historical Data

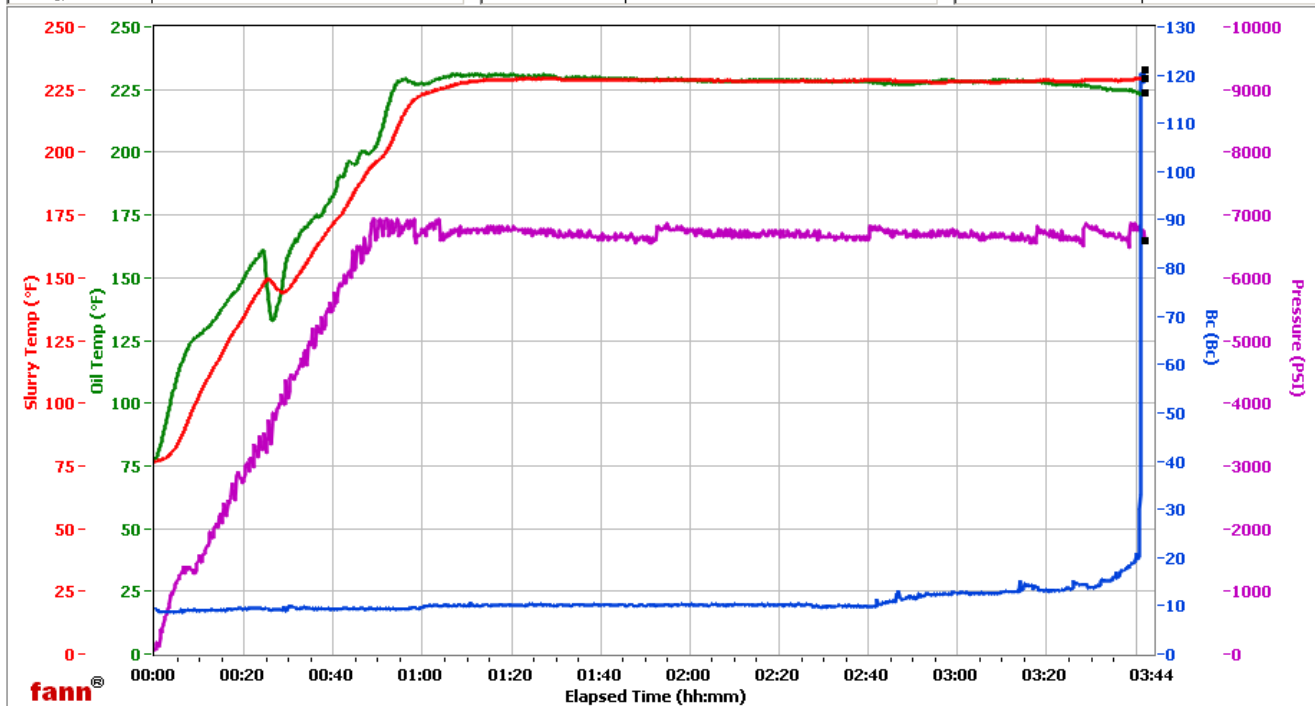
Temp (°F)	600	300	200	100	60	30	6	3	PV/YP
80	38	22	17	11	9	7	5	5	17.2 / 5.4

API Fluid Loss, Request Test ID:1633405, Historical Data

Test Temp (°F)	Test Pressure (psi)	Test Time (min)	Meas. Vol (< 30 min, cc)	Extr. ISO FL (cc/30 min)
180	1,000	9.3	49	176

Vernal

Fields	Values	Fields	Values	Events	Results
Project Name	Exxon 163294-1	Job Type	Pro Tail	30.00 Bc	03h:40m
Test ID	163294-1	Cement Type	TXI	50.00 Bc	03h:41m
Request ID	HPHT #3	Cement Weight	Light Weight	60.00 Bc	03h:41m
Tested by	D.O.	Test Date	07/20/11	70.00 Bc	03h:41m
Customer	Exxonmobil	Test Time	10:01 AM	100.00 Bc	03h:41m
Well No	PCU 296-6B9	Temp. Units	degF	200.00 Bc	NaN
Rig	H&P @1%	Pressure Units	PSI	03h:00m	12.62
Casing/Liner Size	4.5			06h:00m	NaN



Data File O:\HPHT Data Files\Vernal Consistometer #3\Exxonmobil 163294-1.tdms

Comments 100% TXI, .1 econ, 12 den, 2.17 yd

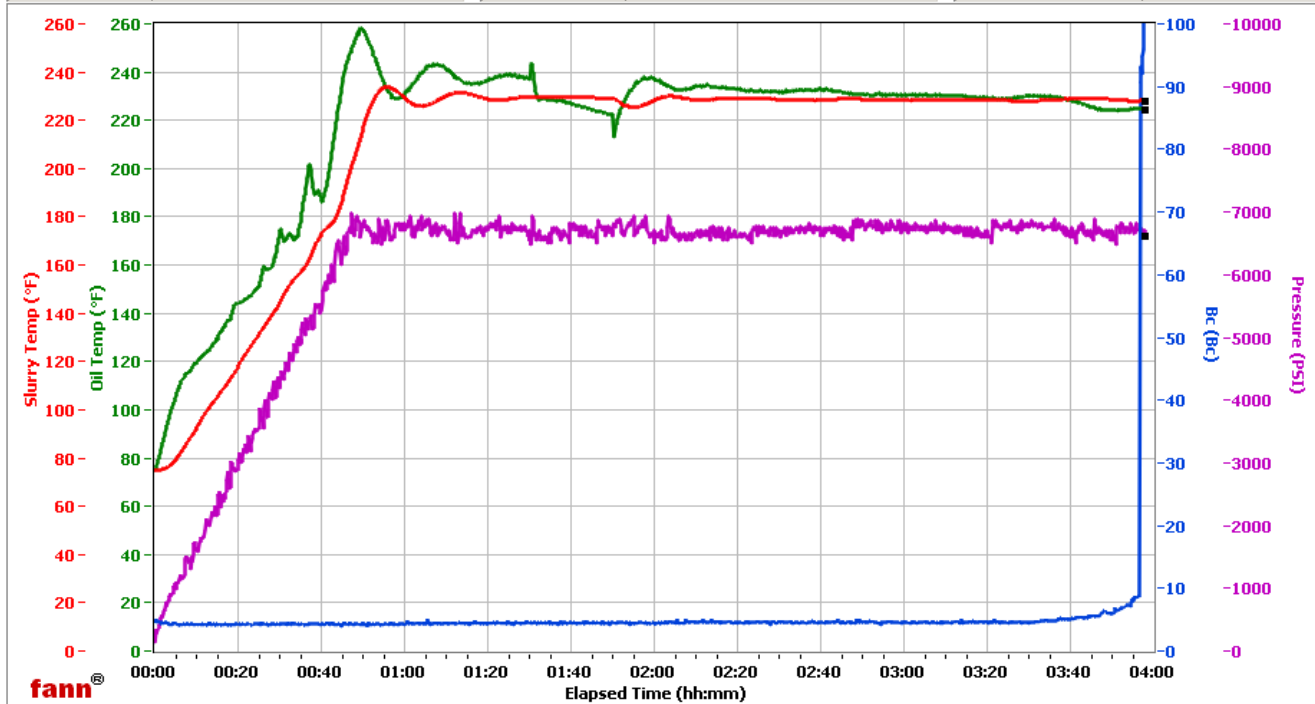
HALLIBURTON

VERNAL

Fields	Values
Project Name	EXXONMOBIL 163294-1a
Test ID	163294-1A
Request ID	HPHT #2
Tested by	d.o.
Customer	EXXONMOBIL
Well No	PCU 296-6B9
Rig	H7P 215
Casing/Liner Size	4.5

Fields	Values
Job Type	PRO TAIL
Cement Type	G
Cement Weight	Light Weight
Test Date	07/22/11
Test Time	12:03 AM
Temp. Units	degF
Pressure Units	PSI

Events	Results
30.00 Bc	03h:56m
50.00 Bc	03h:56m
60.00 Bc	03h:56m
70.00 Bc	03h:56m
100.00 Bc	03h:57m
200.00 Bc	NaN
01h:49m	4.52
06h:00m	NaN



Data File Z:\HPHT Data Files\Vernal Consistometer #2\EXXONMOBIL 163294-1a.tdms

Comments 1005 TXI, .22 FE-2, 12 DEN, 2.17 YD