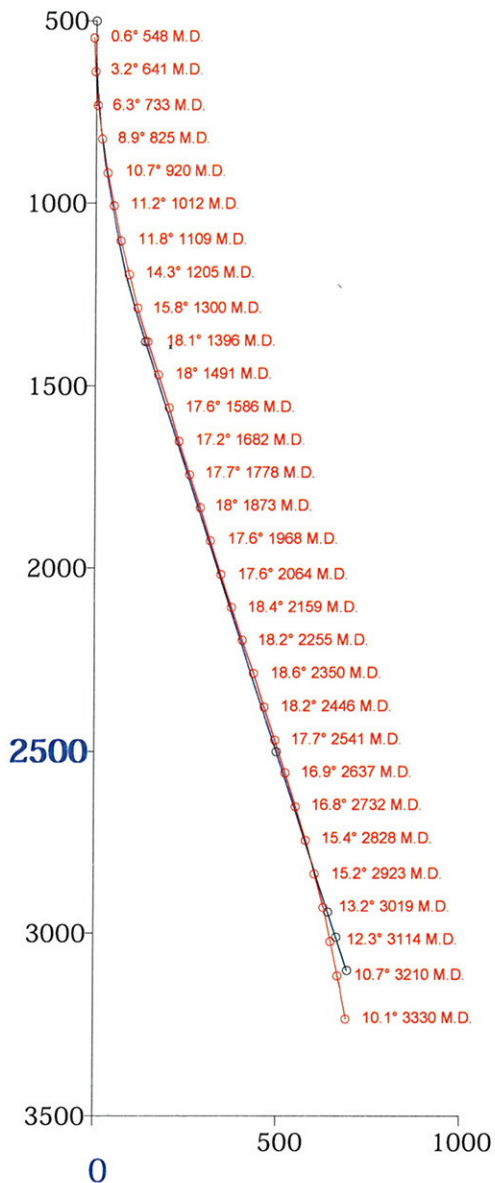


S.G. Interests
Volk 12-89-21 Well #1
Gunnison County, CO
Rev. #6

Final As Drilled

Vertical Section
 1" = 500'

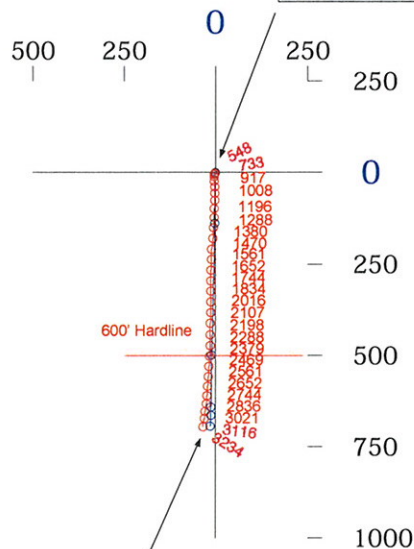
Plane of Proposal
 181.16° Azimuth



Horizontal Plan
 1" = 500'



Surface Location
 Y=1431251.94
 X=2476659.95
 NAD 83



Final As Drilled
 695.53' Displacement from S/L
 @ 182.74° Azimuth from S/L
 South-694.73' West-33.25' of S/L
 TVD-3234' MD-3330'
 Y=1430557.21', X=2476626.70'



Helmer
 DIRECTIONAL DRILLING, INC.
 1-800-435-8983

Helmer Directional Drilling Inc.

S.G. Interests
Volk 12-89-21 Well #1 Rev. 6
Gunnison County, CO
Final As Drilled



Page: 1

Minimum of Curvature
Slot Location: 1431251.94', 2476659.95'
Plane of Vertical Section: 181.16°

Measured Depth Feet	BORE Inc Degrees	HOLE Direction Degrees	True Vertical Depth Feet	RECTANGULAR COORDINATES		LAMBERT COORDINATES		Vertical Section Feet	CLOSURES		Dogleg Severity Deg/100'
				North(-South) Feet	East(-West) Feet	Y Feet	X Feet		Distance Feet	Direction Deg	
0.00	0.00	0.00	0.00	0.00	0.00	1431251.94	2476659.95	0.00	0.00	0.00	0.00
548.00	0.60	251.00	547.99	-0.93	-2.71	1431251.01	2476657.24	0.99	2.87	251.00	0.11
641.00	3.20	181.40	640.94	-3.69	-3.24	1431248.25	2476656.71	3.75	4.91	221.27	3.27
733.00	6.30	179.50	732.61	-11.30	-3.26	1431240.64	2476656.69	11.37	11.76	196.07	3.37
825.00	8.90	180.40	823.79	-23.47	-3.26	1431228.47	2476656.69	23.53	23.70	187.91	2.83
920.00	10.70	177.70	917.40	-39.63	-2.96	1431212.31	2476656.99	39.68	39.74	184.27	1.96
1012.00	11.20	181.30	1007.73	-57.10	-2.82	1431194.84	2476657.13	57.14	57.17	182.83	0.92
1109.00	11.80	179.60	1102.78	-76.44	-2.96	1431175.50	2476656.99	76.48	76.49	182.22	0.71
1205.00	14.30	182.30	1196.30	-98.10	-3.37	1431153.84	2476656.58	98.15	98.16	181.97	2.68
1300.00	15.80	183.70	1288.04	-122.73	-4.68	1431129.21	2476655.27	122.80	122.82	182.18	1.62
1396.00	18.10	183.40	1379.86	-150.66	-6.40	1431101.28	2476653.55	150.76	150.80	182.43	2.40
1491.00	18.00	183.90	1470.18	-180.04	-8.28	1431071.90	2476651.67	180.17	180.23	182.63	0.19
1586.00	17.60	184.10	1560.64	-209.01	-10.30	1431042.93	2476649.65	209.18	209.26	182.82	0.43
1682.00	17.20	182.50	1652.24	-237.67	-11.96	1431014.27	2476647.99	237.86	237.97	182.88	0.65
1778.00	17.70	181.60	1743.83	-266.44	-12.99	1430985.50	2476646.96	266.64	266.75	182.79	0.59
1873.00	18.00	180.20	1834.25	-295.55	-13.44	1430956.39	2476646.51	295.76	295.86	182.60	0.55
1968.00	17.60	179.90	1924.70	-324.59	-13.47	1430927.35	2476646.48	324.80	324.87	182.38	0.43
2064.00	17.60	179.70	2016.21	-353.62	-13.37	1430898.32	2476646.58	353.82	353.87	182.16	0.06
2159.00	18.40	181.00	2106.56	-382.97	-13.55	1430868.97	2476646.40	383.17	383.21	182.03	0.94
2255.00	18.20	181.40	2197.71	-413.11	-14.18	1430838.83	2476645.77	413.31	413.35	181.97	0.25
2350.00	18.60	181.40	2287.85	-443.09	-14.92	1430808.85	2476645.03	443.30	443.34	181.93	0.42
2446.00	18.20	182.50	2378.94	-473.37	-15.94	1430778.57	2476644.01	473.60	473.64	181.93	0.55
2541.00	17.70	182.60	2469.32	-502.62	-17.25	1430749.32	2476642.70	502.86	502.91	181.97	0.53
2637.00	16.90	183.50	2560.97	-531.13	-18.76	1430720.81	2476641.19	531.40	531.46	182.02	0.88
2732.00	16.80	183.50	2651.89	-558.61	-20.44	1430693.33	2476639.51	558.91	558.99	182.10	0.11
2828.00	15.40	184.20	2744.13	-585.17	-22.22	1430666.77	2476637.73	585.50	585.59	182.17	1.47
2923.00	15.20	184.00	2835.76	-610.18	-24.01	1430641.76	2476635.94	610.54	610.65	182.25	0.22

Helmer Directional Drilling Inc.

S.G. Interests Volk 12-89-21 Well #1 Rev. 6 Gunnison County, CO Final As Drilled		Page: 2 Minimum of Curvature Slot Location: 1431251.94', 2476659.95' Plane of Vertical Section: 181.16°
---	--	--

Measured Depth Feet	BORE Inc Degrees	HOLE Direction Degrees	True Vertical Depth Feet	RECTANGULAR COORDINATES		LAMBERT COORDINATES		Vertical Section Feet	CLOSURES		Dogleg Severity Deg/100'
				North(-South) Feet	East(-West) Feet	Y Feet	X Feet		Distance Feet	Direction Deg	
3019.00	13.20	184.70	2928.82	-633.66	-25.79	1430618.28	2476634.16	634.05	634.18	182.33	2.09
3114.00	12.30	186.70	3021.48	-654.52	-27.86	1430597.42	2476632.09	654.95	655.11	182.44	1.06
3210.00	10.70	187.70	3115.55	-673.51	-30.25	1430578.43	2476629.70	673.98	674.19	182.57	1.68
3242.00	10.50	188.10	3147.00	-679.34	-31.06	1430572.60	2476628.89	679.83	680.05	182.62	0.67
3277.00	10.10	188.10	3181.44	-685.53	-31.94	1430566.41	2476628.01	686.04	686.28	182.67	1.14
3330.00	10.10	188.10	3233.62	-694.73	-33.25	1430557.21	2476626.70	695.27	695.53	182.74	0.00

Final Station Closure Distance: 695.53' Direction: 182.74°