



Petrox Resources

**San Juan Basin (CO)
SEC 16U-T34N-R5W
FGU 16U #1**

Lateral #1

Plan: Projection 1

Standard Planning Report

12 August, 2011



PETROX RESOURCES INC.



WELL DETAILS: FGU 16U #1

Northing	Ground Level: 7286.0	Easting	Latitude	Longitude
1198288.95		2446458.58	37° 11' 44.772 N	107° 24' 1.728 W

WELLBORE TARGET DETAILS (LAT/LONG)

Name	TVD	+N/-S	+E/-W	Latitude	Longitude	Shape
FGU 16U #1 BHL	2631.0	-2700.0	1985.0	37° 11' 18.481 N	107° 23' 36.524 W	Point
FGU 16U #1 LP	2692.7	-499.6	419.6	37° 11' 39.917 N	107° 23' 56.417 W	Point
FGU 16U #1 TGT #2	2707.0	-2014.2	1480.8	37° 11' 25.158 N	107° 23' 42.925 W	Point
FGU 16U #1 TGT #1	2722.0	-1611.4	1184.7	37° 11' 29.081 N	107° 23' 46.685 W	Point

SECTION DETAILS

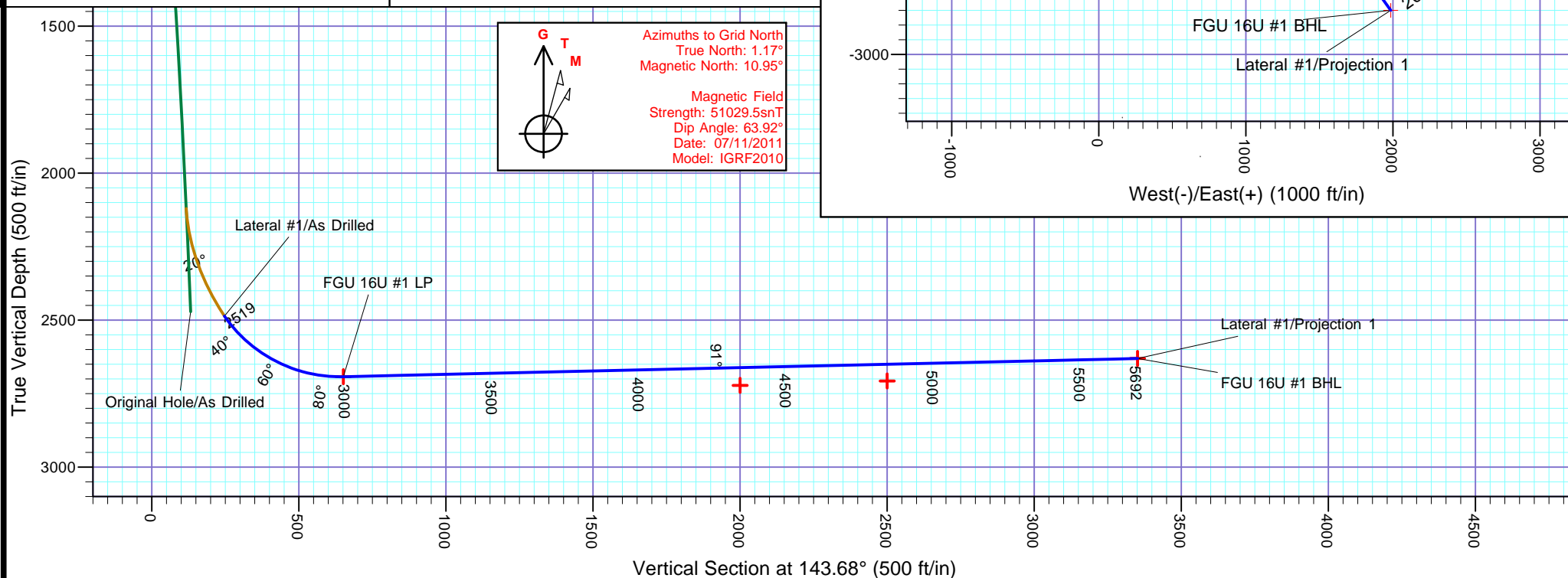
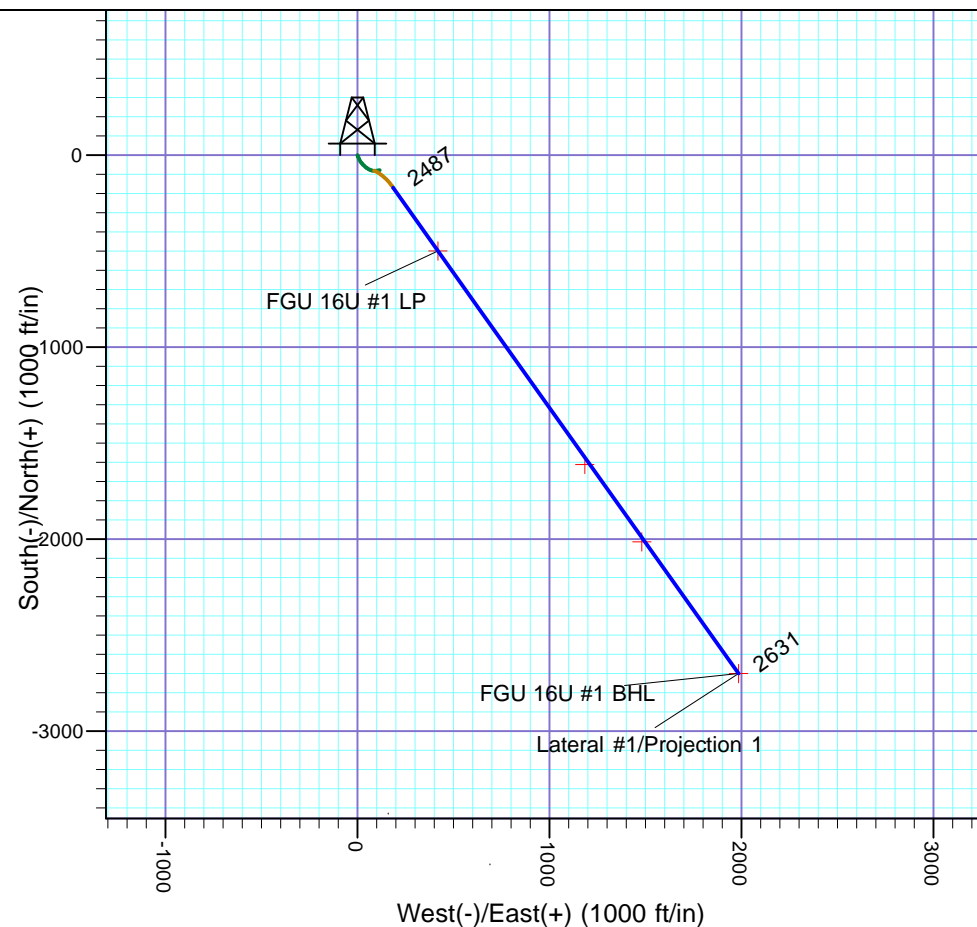
Sec	MD	Inc	Azi	TVD	+N/-S	+E/-W	Dleg	TFace	Vsect	Target
1	2519.0	34.63	144.99	2486.7	-170.0	186.4	0.00	0.00	247.4	
2	2991.3	91.31	144.57	2692.7	-499.6	419.6	12.00	-0.50	651.1	FGU 16U #1 LP
3	5692.4	91.31	144.57	2631.0	-2700.0	1985.0	0.00	0.00	3351.2	FGU 16U #1 BHL

REFERENCE INFORMATION

Co-ordinate (N/E) Reference: Well FGU 16U #1, Grid North
Vertical (TVD) Reference: DFE @ 7298.0ft
Section (VS) Reference: Slot - (0.0N, 0.0E)
Measured Depth Reference: DFE @ 7298.0ft
Calculation Method: Minimum Curvature

PROJECT DETAILS: San Juan Basin (CO)

Geodetic System: US State Plane 1983
Datum: North American Datum 1983
Ellipsoid: GRS 1980
Zone: Colorado Southern Zone
System Datum: Mean Sea Level





Database:	EDM 5000.1 Single User Db	Local Co-ordinate Reference:	Well FGU 16U #1
Company:	Petrox Resources	TVD Reference:	DFE @ 7298.0ft
Project:	San Juan Basin (CO)	MD Reference:	DFE @ 7298.0ft
Site:	SEC 16U-T34N-R5W	North Reference:	Grid
Well:	FGU 16U #1	Survey Calculation Method:	Minimum Curvature
Wellbore:	Lateral #1		
Design:	Projection 1		

Project	San Juan Basin (CO), Colorado, Fruitland Coal		
Map System:	US State Plane 1983	System Datum:	Mean Sea Level
Geo Datum:	North American Datum 1983		Using Well Reference Point
Map Zone:	Colorado Southern Zone		Using geodetic scale factor

Site						SEC 16U-T34N-R5W											
Site Position:						Northing:			1,200,452.23 usft			Latitude:			37° 12' 6.552 N		
From:			Lat/Long			Easting:			2,448,431.15 usft			Longitude:			107° 23' 37.896 W		
Position Uncertainty:			15.0 ft			Slot Radius:			6-1/8 "			Grid Convergence:			-1.16°		

Well	FGU 16U #1, FC Re-Entry HZ					
Well Position	+N-S	-2,163.3 ft	Northing:	1,198,288.94 usft	Latitude:	37° 11' 44.772 N
	+E-W	-1,972.6 ft	Easting:	2,446,458.59 usft	Longitude:	107° 24' 1.728 W
Position Uncertainty		3.5 ft	Wellhead Elevation:		Ground Level:	7,286.0 ft

Wellbore	Lateral #1				
-----------------	------------	--	--	--	--

Magnetics	Model Name	Sample Date	Declination (°)	Dip Angle (°)	Field Strength (nT)
	IGRF2010	07/11/11	9.79	63.92	51,029

Design	Projection 1				
---------------	--------------	--	--	--	--

Audit Notes:					
Version:	Phase:	PLAN	Tie On Depth:	2,519.0	
Vertical Section:	Depth From (TVD) (ft)	+N/-S (ft)	+E/-W (ft)	Direction (°)	
	0.0	0.0	0.0	143.68	

Plan Sections										
Measured Depth (ft)	Inclination (°)	Azimuth (°)	Vertical Depth (ft)	+N/-S (ft)	+E/-W (ft)	Dogleg Rate (°/100usft)	Build Rate (°/100usft)	Turn Rate (°/100usft)	TFO (°)	Target
2,519.0	34.63	144.99	2,486.7	-170.0	186.4	0.00	0.00	0.00	0.00	
2,991.3	91.31	144.57	2,692.7	-499.6	419.6	12.00	12.00	-0.09	-0.50	FGU 16U #1 LP
5,692.4	91.31	144.57	2,631.0	-2,700.0	1,985.0	0.00	0.00	0.00	0.00	FGU 16U #1 BHL



Database:	EDM 5000.1 Single User Db	Local Co-ordinate Reference:	Well FGU 16U #1
Company:	Petrox Resources	TVD Reference:	DFE @ 7298.0ft
Project:	San Juan Basin (CO)	MD Reference:	DFE @ 7298.0ft
Site:	SEC 16U-T34N-R5W	North Reference:	Grid
Well:	FGU 16U #1	Survey Calculation Method:	Minimum Curvature
Wellbore:	Lateral #1		
Design:	Projection 1		

Planned Survey									
Measured Depth (ft)	Inclination (°)	Azimuth (°)	Vertical Depth (ft)	+N/-S (ft)	+E/-W (ft)	Vertical Section (ft)	Dogleg Rate (°/100usft)	Build Rate (°/100usft)	Turn Rate (°/100usft)
0.0	0.00	0.00	0.0	0.0	0.0	0.0	0.00	0.00	0.00
25.0	0.34	151.22	25.0	-0.1	0.0	0.1	1.36	1.36	0.00
50.0	0.68	151.22	50.0	-0.3	0.1	0.3	1.36	1.36	0.00
75.0	1.02	151.22	75.0	-0.6	0.3	0.7	1.36	1.36	0.00
100.0	1.16	172.23	100.0	-1.0	0.5	1.1	1.68	0.56	84.04
125.0	1.26	153.80	125.0	-1.5	0.6	1.6	1.60	0.40	-73.72
150.0	1.49	156.64	150.0	-2.1	0.9	2.2	0.96	0.92	11.36
175.0	1.84	156.93	175.0	-2.7	1.2	2.9	1.40	1.40	1.16
200.0	2.03	160.07	200.0	-3.5	1.5	3.7	0.87	0.76	12.56
225.0	2.10	155.02	224.9	-4.4	1.8	4.6	0.78	0.28	-20.20
250.0	2.22	156.97	249.9	-5.2	2.2	5.5	0.56	0.48	7.80
275.0	2.51	160.09	274.9	-6.2	2.6	6.5	1.27	1.16	12.48
300.0	2.56	160.04	299.9	-7.2	2.9	7.6	0.20	0.20	-0.20
325.0	2.67	158.26	324.8	-8.3	3.3	8.7	0.55	0.44	-7.12
350.0	2.72	157.96	349.8	-9.4	3.8	9.8	0.21	0.20	-1.20
375.0	2.81	158.02	374.8	-10.5	4.2	11.0	0.36	0.36	0.24
400.0	2.98	158.65	399.8	-11.7	4.7	12.2	0.69	0.68	2.52
425.0	3.14	159.16	424.7	-12.9	5.2	13.5	0.65	0.64	2.04
450.0	3.32	156.17	449.7	-14.2	5.7	14.8	0.99	0.72	-11.96
475.0	3.42	157.14	474.6	-15.6	6.3	16.3	0.46	0.40	3.88
500.0	3.71	159.43	499.6	-17.0	6.9	17.8	1.29	1.16	9.16
525.0	3.87	155.41	524.5	-18.5	7.5	19.4	1.24	0.64	-16.08
550.0	4.01	157.64	549.5	-20.1	8.2	21.1	0.83	0.56	8.92
575.0	4.11	157.78	574.4	-21.7	8.9	22.8	0.40	0.40	0.56
600.0	4.11	157.74	599.4	-23.4	9.5	24.5	0.01	0.00	-0.16
625.0	4.09	155.27	624.3	-25.0	10.3	26.3	0.71	-0.08	-9.88
650.0	4.11	153.25	649.2	-26.7	11.0	28.0	0.58	0.08	-8.08
675.0	4.07	150.95	674.2	-28.2	11.9	29.8	0.68	-0.16	-9.20
700.0	4.04	147.27	699.1	-29.7	12.8	31.5	1.05	-0.12	-14.72
725.0	4.09	146.07	724.0	-31.2	13.7	33.3	0.39	0.20	-4.80
750.0	4.45	143.44	749.0	-32.7	14.8	35.2	1.64	1.44	-10.52
775.0	4.77	141.06	773.9	-34.3	16.1	37.2	1.49	1.28	-9.52
800.0	5.02	140.71	798.8	-36.0	17.4	39.3	1.01	1.00	-1.40
825.0	5.07	141.68	823.7	-37.7	18.8	41.5	0.40	0.20	3.88
850.0	5.10	143.14	848.6	-39.5	20.1	43.7	0.53	0.12	5.84
875.0	5.04	143.50	873.5	-41.2	21.5	45.9	0.27	-0.24	1.44
900.0	4.82	140.06	898.4	-42.9	22.8	48.1	1.47	-0.88	-13.76
925.0	4.65	138.09	923.3	-44.5	24.1	50.1	0.94	-0.68	-7.88
950.0	4.45	138.37	948.2	-46.0	25.5	52.1	0.80	-0.80	1.12
975.0	4.29	135.41	973.2	-47.3	26.8	54.0	1.11	-0.64	-11.84
1,000.0	4.18	135.64	998.1	-48.7	28.0	55.8	0.45	-0.44	0.92
1,025.0	3.95	134.39	1,023.0	-49.9	29.3	57.6	0.99	-0.92	-5.00
1,050.0	3.75	132.97	1,048.0	-51.1	30.5	59.2	0.89	-0.80	-5.68
1,075.0	3.72	133.72	1,072.9	-52.2	31.7	60.8	0.23	-0.12	3.00
1,100.0	3.68	132.43	1,097.9	-53.3	32.9	62.4	0.37	-0.16	-5.16
1,125.0	3.61	132.62	1,122.8	-54.4	34.0	64.0	0.28	-0.28	0.76
1,150.0	3.51	132.13	1,147.8	-55.4	35.2	65.5	0.42	-0.40	-1.96
1,175.0	3.41	133.97	1,172.7	-56.4	36.3	67.0	0.60	-0.40	7.36
1,200.0	3.36	133.51	1,197.7	-57.5	37.4	68.4	0.23	-0.20	-1.84
1,225.0	3.35	133.87	1,222.6	-58.5	38.4	69.9	0.09	-0.04	1.44
1,250.0	3.22	136.06	1,247.6	-59.5	39.4	71.3	0.72	-0.52	8.76
1,275.0	3.04	136.25	1,272.6	-60.5	40.4	72.6	0.72	-0.72	0.76
1,300.0	3.06	137.20	1,297.5	-61.4	41.3	74.0	0.22	0.08	3.80
1,325.0	3.04	135.79	1,322.5	-62.4	42.2	75.3	0.31	-0.08	-5.64



Database:	EDM 5000.1 Single User Db	Local Co-ordinate Reference:	Well FGU 16U #1
Company:	Petrox Resources	TVD Reference:	DFE @ 7298.0ft
Project:	San Juan Basin (CO)	MD Reference:	DFE @ 7298.0ft
Site:	SEC 16U-T34N-R5W	North Reference:	Grid
Well:	FGU 16U #1	Survey Calculation Method:	Minimum Curvature
Wellbore:	Lateral #1		
Design:	Projection 1		

Planned Survey									
Measured Depth (ft)	Inclination (°)	Azimuth (°)	Vertical Depth (ft)	+N/-S (ft)	+E/-W (ft)	Vertical Section (ft)	Dogleg Rate (°/100usft)	Build Rate (°/100usft)	Turn Rate (°/100usft)
1,350.0	3.04	133.67	1,347.5	-63.3	43.1	76.6	0.45	0.00	-8.48
1,375.0	3.18	131.46	1,372.4	-64.3	44.1	77.9	0.74	0.56	-8.84
1,400.0	3.17	129.64	1,397.4	-65.2	45.2	79.3	0.41	-0.04	-7.28
1,425.0	3.23	125.81	1,422.3	-66.0	46.3	80.6	0.89	0.24	-15.32
1,450.0	3.31	121.06	1,447.3	-66.8	47.5	81.9	1.13	0.32	-19.00
1,475.0	3.42	119.85	1,472.3	-67.5	48.8	83.3	0.52	0.44	-4.84
1,500.0	3.50	117.07	1,497.2	-68.3	50.1	84.7	0.74	0.32	-11.12
1,525.0	3.48	117.21	1,522.2	-68.9	51.4	86.0	0.09	-0.08	0.56
1,550.0	3.53	117.25	1,547.1	-69.6	52.8	87.4	0.20	0.20	0.16
1,575.0	3.62	118.50	1,572.1	-70.4	54.2	88.8	0.48	0.36	5.00
1,600.0	3.76	118.23	1,597.0	-71.1	55.6	90.2	0.56	0.56	-1.08
1,625.0	4.01	118.38	1,622.0	-71.9	57.1	91.8	1.00	1.00	0.60
1,650.0	3.82	120.52	1,646.9	-72.8	58.6	93.3	0.96	-0.76	8.56
1,675.0	3.61	119.49	1,671.9	-73.6	60.0	94.8	0.88	-0.84	-4.12
1,700.0	3.49	118.98	1,696.8	-74.3	61.3	96.2	0.50	-0.48	-2.04
1,725.0	3.47	118.18	1,721.8	-75.1	62.7	97.6	0.21	-0.08	-3.20
1,750.0	3.38	117.09	1,746.7	-75.8	64.0	98.9	0.44	-0.36	-4.36
1,775.0	3.36	116.05	1,771.7	-76.4	65.3	100.2	0.26	-0.08	-4.16
1,800.0	3.29	115.31	1,796.6	-77.1	66.6	101.5	0.33	-0.28	-2.96
1,825.0	3.34	116.39	1,821.6	-77.7	67.9	102.8	0.32	0.20	4.32
1,850.0	3.41	112.34	1,846.5	-78.3	69.2	104.1	0.99	0.28	-16.20
1,875.0	3.55	108.31	1,871.5	-78.8	70.7	105.4	1.13	0.56	-16.12
1,900.0	3.60	107.08	1,896.5	-79.3	72.1	106.6	0.37	0.20	-4.92
1,925.0	3.72	104.30	1,921.4	-79.7	73.7	107.9	0.86	0.48	-11.12
1,950.0	3.72	104.35	1,946.4	-80.1	75.3	109.1	0.01	0.00	0.20
1,975.0	3.73	102.69	1,971.3	-80.5	76.8	110.4	0.43	0.04	-6.64
2,000.0	3.79	99.41	1,996.2	-80.8	78.4	111.6	0.89	0.24	-13.12
2,025.0	3.85	96.67	2,021.2	-81.0	80.1	112.7	0.77	0.24	-10.96
2,050.0	3.93	94.98	2,046.1	-81.2	81.8	113.9	0.56	0.32	-6.76
2,075.0	4.08	93.92	2,071.1	-81.4	83.5	115.0	0.67	0.60	-4.24
2,100.0	4.14	93.05	2,096.0	-81.5	85.3	116.2	0.35	0.24	-3.48
2,125.0	4.21	91.70	2,120.9	-81.5	87.1	117.3	0.48	0.28	-5.40
2,171.0	9.06	111.29	2,166.6	-82.9	92.2	121.4	11.49	10.54	42.59
2,197.0	11.00	120.95	2,192.2	-84.9	96.2	125.4	9.85	7.46	37.15
2,226.0	13.64	120.34	2,220.6	-88.1	101.5	131.1	9.11	9.10	-2.10
2,266.0	17.12	125.51	2,259.1	-93.9	110.4	141.0	9.34	8.70	12.93
2,298.0	19.41	123.68	2,289.5	-99.6	118.7	150.5	7.38	7.16	-5.72
2,330.0	22.00	125.67	2,319.4	-106.0	128.0	161.2	8.39	8.09	6.22
2,362.0	23.25	131.56	2,349.0	-113.7	137.6	173.1	8.08	3.91	18.41
2,393.0	25.15	133.03	2,377.3	-122.3	147.0	185.5	6.43	6.13	4.74
2,425.0	26.56	138.15	2,406.1	-132.2	156.7	199.4	8.25	4.41	16.00
2,456.0	29.64	140.31	2,433.4	-143.3	166.2	213.9	10.46	9.94	6.97
2,488.0	32.18	142.99	2,460.8	-156.2	176.4	230.3	9.03	7.94	8.38
2,519.0	34.63	144.99	2,486.7	-170.0	186.4	247.4	8.66	7.90	6.45
2,525.0	35.35	144.98	2,491.6	-172.8	188.4	250.8	12.00	12.00	-0.18
2,550.0	38.35	144.94	2,511.6	-185.1	197.0	265.8	12.00	12.00	-0.17
2,575.0	41.35	144.90	2,530.8	-198.2	206.2	281.8	12.00	12.00	-0.15
2,600.0	44.35	144.87	2,549.2	-212.1	216.0	298.8	12.00	12.00	-0.13
2,625.0	47.35	144.84	2,566.6	-226.8	226.3	316.8	12.00	12.00	-0.12
2,650.0	50.35	144.81	2,583.0	-242.2	237.2	335.6	12.00	12.00	-0.11
2,675.0	53.35	144.79	2,598.5	-258.2	248.5	355.2	12.00	12.00	-0.10
2,700.0	56.35	144.77	2,612.9	-274.9	260.3	375.7	12.00	12.00	-0.09
2,725.0	59.35	144.75	2,626.2	-292.2	272.5	396.8	12.00	12.00	-0.08
2,750.0	62.35	144.73	2,638.3	-310.0	285.1	418.7	12.00	12.00	-0.08



Database:	EDM 5000.1 Single User Db	Local Co-ordinate Reference:	Well FGU 16U #1
Company:	Petrox Resources	TVD Reference:	DFE @ 7298.0ft
Project:	San Juan Basin (CO)	MD Reference:	DFE @ 7298.0ft
Site:	SEC 16U-T34N-R5W	North Reference:	Grid
Well:	FGU 16U #1	Survey Calculation Method:	Minimum Curvature
Wellbore:	Lateral #1		
Design:	Projection 1		

Planned Survey									
Measured Depth (ft)	Inclination (°)	Azimuth (°)	Vertical Depth (ft)	+N/-S (ft)	+E/-W (ft)	Vertical Section (ft)	Dogleg Rate (°/100usft)	Build Rate (°/100usft)	Turn Rate (°/100usft)
2,775.0	65.35	144.71	2,649.4	-328.3	298.1	441.1	12.00	12.00	-0.07
2,800.0	68.35	144.69	2,659.2	-347.1	311.4	464.1	12.00	12.00	-0.07
2,825.0	71.35	144.67	2,667.8	-366.2	324.9	487.5	12.00	12.00	-0.07
2,850.0	74.35	144.66	2,675.2	-385.7	338.7	511.4	12.00	12.00	-0.07
2,875.0	77.35	144.64	2,681.3	-405.5	352.8	535.7	12.00	12.00	-0.06
2,900.0	80.35	144.63	2,686.1	-425.5	367.0	560.2	12.00	12.00	-0.06
2,925.0	83.35	144.61	2,689.7	-445.7	381.3	584.9	12.00	12.00	-0.06
2,950.0	86.35	144.60	2,691.9	-466.0	395.7	609.8	12.00	12.00	-0.06
2,975.0	89.35	144.58	2,692.8	-486.3	410.2	634.8	12.00	12.00	-0.06
2,991.3	91.31	144.57	2,692.7	-499.6	419.6	651.1	12.00	12.00	-0.06
3,000.0	91.31	144.57	2,692.5	-506.7	424.7	659.8	0.00	0.00	0.00
3,100.0	91.31	144.57	2,690.3	-588.2	482.6	759.7	0.00	0.00	0.00
3,200.0	91.31	144.57	2,688.0	-669.6	540.6	859.7	0.00	0.00	0.00
3,300.0	91.31	144.57	2,685.7	-751.1	598.5	959.7	0.00	0.00	0.00
3,400.0	91.31	144.57	2,683.4	-832.6	656.5	1,059.6	0.00	0.00	0.00
3,500.0	91.31	144.57	2,681.1	-914.0	714.4	1,159.6	0.00	0.00	0.00
3,600.0	91.31	144.57	2,678.8	-995.5	772.4	1,259.6	0.00	0.00	0.00
3,700.0	91.31	144.57	2,676.5	-1,076.9	830.3	1,359.5	0.00	0.00	0.00
3,800.0	91.31	144.57	2,674.3	-1,158.4	888.3	1,459.5	0.00	0.00	0.00
3,900.0	91.31	144.57	2,672.0	-1,239.9	946.2	1,559.4	0.00	0.00	0.00
4,000.0	91.31	144.57	2,669.7	-1,321.3	1,004.2	1,659.4	0.00	0.00	0.00
4,100.0	91.31	144.57	2,667.4	-1,402.8	1,062.1	1,759.4	0.00	0.00	0.00
4,200.0	91.31	144.57	2,665.1	-1,484.3	1,120.1	1,859.3	0.00	0.00	0.00
4,300.0	91.31	144.57	2,662.8	-1,565.7	1,178.0	1,959.3	0.00	0.00	0.00
4,400.0	91.31	144.57	2,660.5	-1,647.2	1,236.0	2,059.3	0.00	0.00	0.00
4,500.0	91.31	144.57	2,658.2	-1,728.7	1,294.0	2,159.2	0.00	0.00	0.00
4,600.0	91.31	144.57	2,656.0	-1,810.1	1,351.9	2,259.2	0.00	0.00	0.00
4,700.0	91.31	144.57	2,653.7	-1,891.6	1,409.9	2,359.1	0.00	0.00	0.00
4,800.0	91.31	144.57	2,651.4	-1,973.0	1,467.8	2,459.1	0.00	0.00	0.00
4,900.0	91.31	144.57	2,649.1	-2,054.5	1,525.8	2,559.1	0.00	0.00	0.00
5,000.0	91.31	144.57	2,646.8	-2,136.0	1,583.7	2,659.0	0.00	0.00	0.00
5,100.0	91.31	144.57	2,644.5	-2,217.4	1,641.7	2,759.0	0.00	0.00	0.00
5,200.0	91.31	144.57	2,642.2	-2,298.9	1,699.6	2,858.9	0.00	0.00	0.00
5,300.0	91.31	144.57	2,640.0	-2,380.4	1,757.6	2,958.9	0.00	0.00	0.00
5,400.0	91.31	144.57	2,637.7	-2,461.8	1,815.5	3,058.9	0.00	0.00	0.00
5,500.0	91.31	144.57	2,635.4	-2,543.3	1,873.5	3,158.8	0.00	0.00	0.00
5,600.0	91.31	144.57	2,633.1	-2,624.7	1,931.4	3,258.8	0.00	0.00	0.00
5,692.4	91.31	144.57	2,631.0	-2,700.0	1,985.0	3,351.2	0.00	0.00	0.00



Database:	EDM 5000.1 Single User Db	Local Co-ordinate Reference:	Well FGU 16U #1
Company:	Petrox Resources	TVD Reference:	DFE @ 7298.0ft
Project:	San Juan Basin (CO)	MD Reference:	DFE @ 7298.0ft
Site:	SEC 16U-T34N-R5W	North Reference:	Grid
Well:	FGU 16U #1	Survey Calculation Method:	Minimum Curvature
Wellbore:	Lateral #1		
Design:	Projection 1		

Design Targets									
Target Name									
- hit/miss target	Dip Angle	Dip Dir.	TVD	+N/-S	+E/-W	Northing	Easting	Latitude	Longitude
- Shape	(°)	(°)	(ft)	(ft)	(ft)	(usft)	(usft)		
FGU 16U #1 BHL	0.00	360.00	2,631.0	-2,700.0	1,985.0	1,195,588.91	2,448,443.58	37° 11' 18.481 N	107° 23' 36.524 W
- plan hits target center									
- Point									
FGU 16U #1 LP	0.00	0.00	2,692.7	-499.6	419.6	1,197,789.30	2,446,878.23	37° 11' 39.917 N	107° 23' 56.417 W
- plan hits target center									
- Point									
FGU 16U #1 TGT #2	0.00	360.00	2,707.0	-2,014.2	1,480.8	1,196,274.70	2,447,939.43	37° 11' 25.158 N	107° 23' 42.925 W
- plan misses target center by 58.1ft at 4839.8ft MD (2650.5 TVD, -2005.5 N, 1490.9 E)									
- Point									
FGU 16U #1 TGT #1	0.00	360.00	2,722.0	-1,611.4	1,184.7	1,196,677.55	2,447,643.26	37° 11' 29.081 N	107° 23' 46.685 W
- plan misses target center by 63.7ft at 4339.7ft MD (2661.9 TVD, -1598.1 N, 1201.0 E)									
- Point									