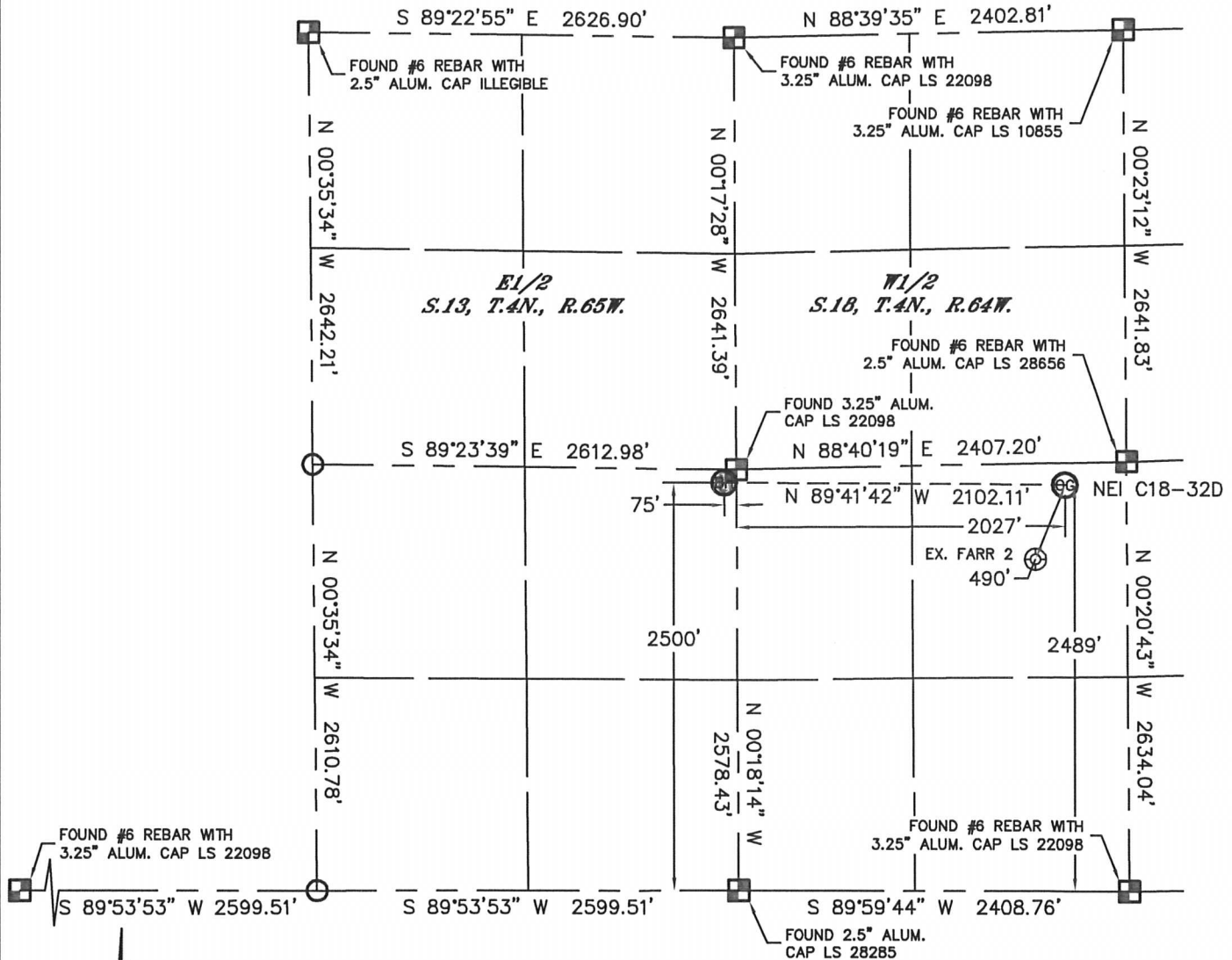


WELL LOCATION CERTIFICATE

THIS MAP DOES NOT REPRESENT A BOUNDARY SURVEY

SECTION: 18
TOWNSHIP: 4N
RANGE: 64W



In accordance with a request from Matt Verbit with Noble Energy Inc. Lat40°, Inc. has determined the surface location of the NE1 C18-32D to be 2489' from the SOUTH line and 2027' from the WEST line as measured at right angles from the section lines of Section 18, Township 4 North, Range 64 West and the bottom hole to be 75' from the EAST line and 2500' from the SOUTH line as measured at right angles from the section lines of Section 13, Township 4 North, Range 65 West of the Sixth Principal Meridian, County of Weld, State of Colorado.

I hereby state that this Well Location Certificate was prepared by me, or under my direct supervision, that the fieldwork was completed on 5/10/11, for and on behalf of Noble Energy Inc. That this is not a Land Survey Plat or an Improvement Survey Plat, and that it is not to be relied upon for establishment of fence, building, or other future improvement lines.





NOTE:

- 1) Bearings shown are Grid Bearings of the Colorado State Plane Coordinate System, North Zone, North American Datum 1983/2007. The lineal dimensions as contained herein are based upon the "U.S. Survey Foot."
- 2) Ground elevations are based on an observed GPS elevation (NAVD 1988 DATUM).
- 3) NEAREST EXISTING WELL: FARR 2, 490'
- 4) IMPROVEMENTS: See LOCATION DRAWING for all visible improvements within 400' of disturbed area.
- 5) SURFACE USE: RANGELAND
- 6) INSTRUMENT OPERATOR: BRIAN BRINKMAN

NOTE

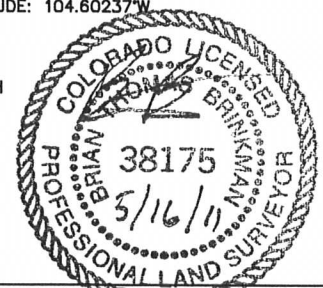
According to Colorado law, you must commence any legal action based upon any defect in this W.L.C. within three years after you discover such defect. In no event, may any action based upon any defect in this survey be commenced more than ten years after the date of the certificate shown hereon. (13-80-105 C.R.S.)

LEGEND

-  = ALIQUOT MONUMENT AS DESCRIBED
-  = CALCULATED POSITION

SURFACE LOCATION
LATITUDE: 40.31188°N
LONGITUDE: 104.59483°W
PDOP: 2.3
ELEV: 4835'
1/4, 1/4: NE1/4SW1/4
NEAREST PROPERTY LINE: 88' SOUTH

BOTTOM HOLE
LATITUDE: 40.31197°N
LONGITUDE: 104.60237°W

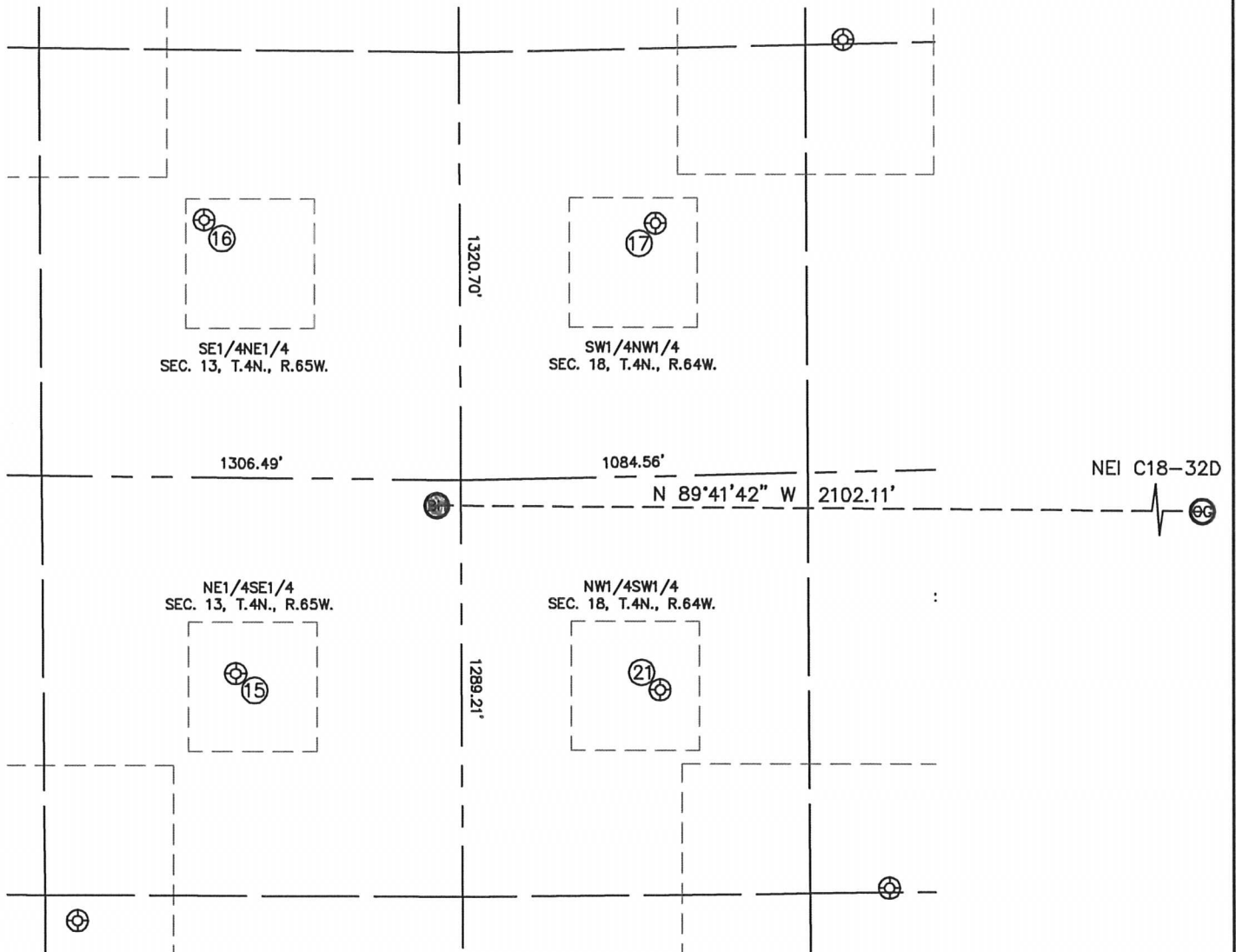


Brian T. Brinkman—On behalf of Lat40°, Inc.
Colorado Licensed Professional
Land Surveyor No. 38175
PROJECT#: 2011110

SITE SKETCH

NEI C18-32D

SECTION: 18
TOWNSHIP: 4N
RANGE: 64W



⑮

HUNTSMAN G13-9
NE1/4SE1/4
1982' FSL
705' FEL
LAT-40.31056°N
LONG-104.60463°W
PDOP: 2.0
ELEV: 4814'

⑯

FRY 13-2
SE1/4NE1/4
1847' FNL
796' FEL
LAT-40.31440°N
LONG-104.60493°W
PDOP: 1.9
ELEV: 4781'

⑰

FRY 18-1
SW1/4NW1/4
1860' FNL
613' FWL
LAT-40.31434°N
LONG-104.59988°W
PDOP: 2.0
ELEV: 4809'

⑰

FARR 18-12
NW1/4SW1/4
1931' FSL
620' FWL
LAT-40.31039°N
LONG-104.59989°W
PDOP: 1.6
ELEV: 4818'

