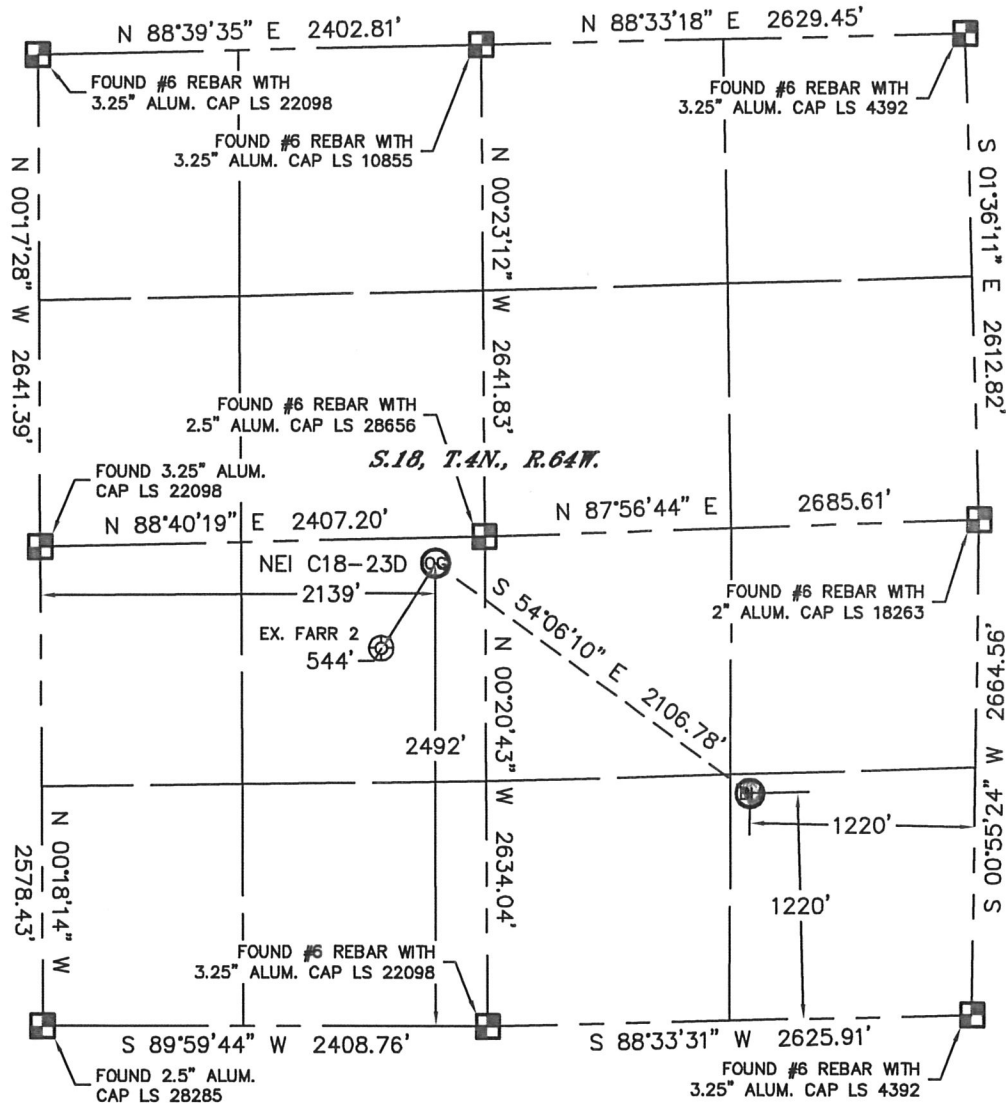


WELL LOCATION CERTIFICATE

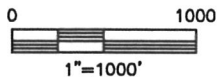
THIS MAP DOES NOT REPRESENT A BOUNDARY SURVEY

SECTION: 18
TOWNSHIP: 4N
RANGE: 64W



In accordance with a request from Matt Verbit with Noble Energy Inc., Lat40°, Inc. has determined the surface location of the NEI C18-23D to be 2492' from the SOUTH line and 1220' from the WEST line and the bottom hole to be 1220' from the SOUTH line and 1220' from the EAST line as measured at right angles from the section lines of Section 18, Township 4 North, Range 64 West of the Sixth Principal Meridian, County of Weld, State of Colorado.

I hereby state that this Well Location Certificate was prepared by me, or under my direct supervision, that the fieldwork was completed on 5/10/11, for and on behalf of Noble Energy Inc. That this is not a Land Survey Plat or an Improvement Survey Plat, and that it is not to be relied upon for establishment of fence, building, or other future improvement lines.



NOTE:

- 1) Bearings shown are Grid Bearings of the Colorado State Plane Coordinate System, North Zone, North American Datum 1983/2007. The lineal dimensions as contained herein are based upon the "U.S. Survey Foot."
- 2) Ground elevations are based on an observed GPS elevation (NAVD 1988 DATUM).
- 3) NEAREST EXISTING WELL: FARR 2, 544'
- 4) IMPROVEMENTS: See LOCATION DRAWING for all visible improvements within 400' of disturbed area.
- 5) SURFACE USE: RANGELAND
- 6) INSTRUMENT OPERATOR: BRIAN BRINKMAN

SURFACE LOCATION
LATITUDE: 40.31188°N
LONGITUDE: 104.59443°W
PDOP: 2.0
ELEV: 4835'
1/4, 1/4: NE1/4SW1/4
NEAREST PROPERTY LINE: 102' SOUTH

BOTTOM HOLE
LATITUDE: 40.30844°N
LONGITUDE: 104.58836°W

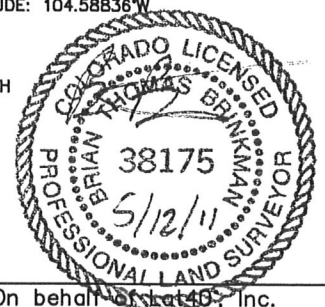
NOTE

According to Colorado law, you must commence any legal action based upon any defect in this W.L.C. within three years after you discover such defect. In no event, may any action based upon any defect in this survey be commenced more than ten years after the date of the certificate shown hereon. (13-80-105 C.R.S.)

LEGEND

- = ALIQUOT MONUMENT AS DESCRIBED
- = CALCULATED POSITION

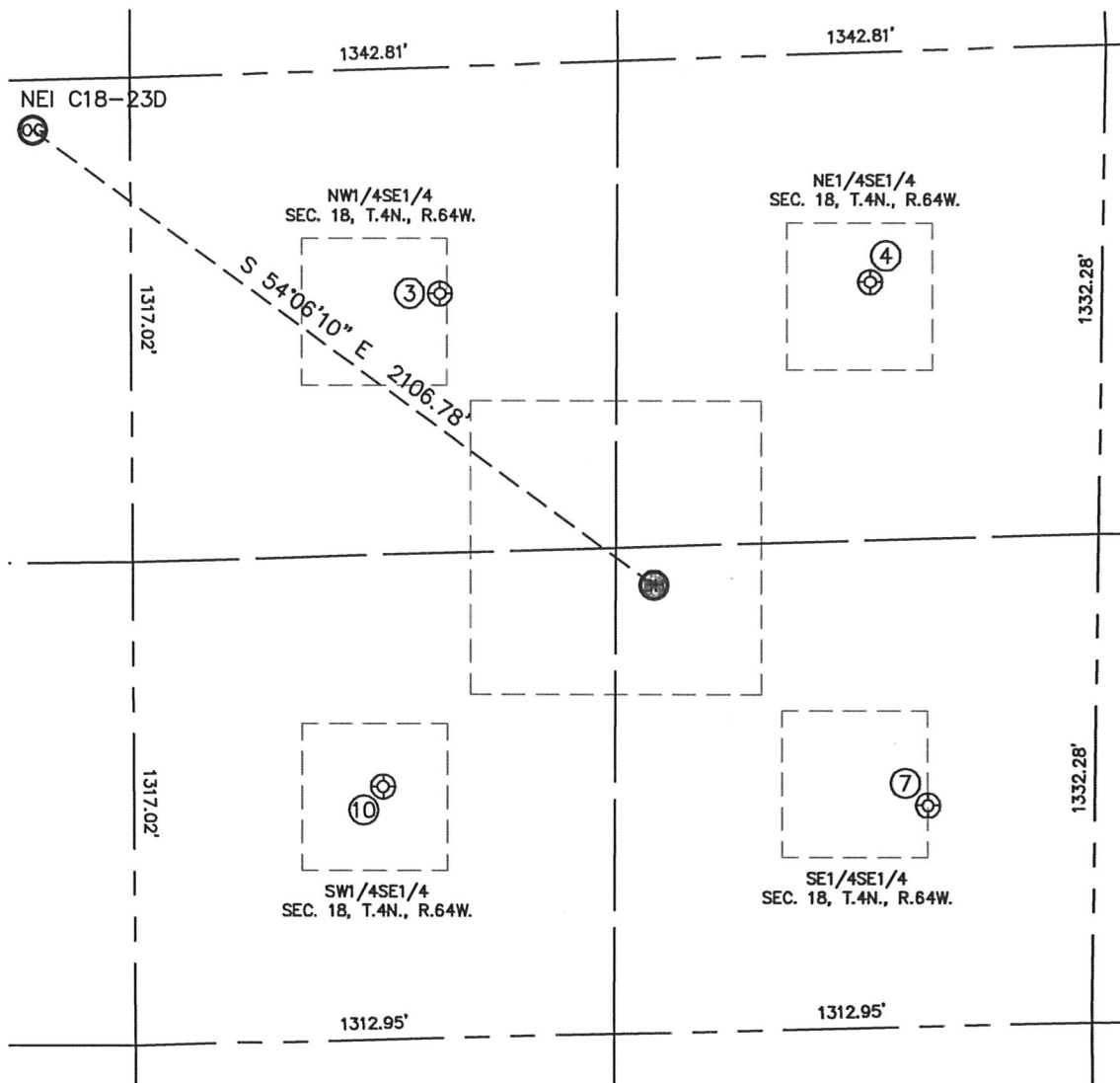
Brian T. Brinkman—On behalf of Lat40°, Inc.
Colorado Licensed Professional
Land Surveyor No. 38175 PROJECT#: 2011110



SITE SKETCH

NEI C18-23D

SECTION: 18
TOWNSHIP: 4N
RANGE: 64W



③

RITER C18-10
NW1/4SE1/4
2026' FSL
1822' FEL
LAT-40.31063°N
LONG-104.59044°W
PDOP: 2.0
ELEV: 4803'

④

SCHNEIDER 43-18
NE1/4SE1/4
2030' FSL
636' FEL
LAT-40.31069°N
LONG-104.58619°W
PDOP: 2.4
ELEV: 4773'

⑦

RITER C18-16
SE1/4SE1/4
602' FSL
457' FEL
LAT-40.30678°N
LONG-104.58568°W
PDOP: 2.1
ELEV: 4769'

⑩

SCHNEIDER/DIC/COLTON
34-18
SW1/4SE1/4
689' FSL
1956' FEL
LAT-40.30696°N
LONG-104.59105°W
PDOP: 2.1
ELEV: 4802'

