

DALEY LAND SURVEYING, INC.

PARKER, CO. 80134

303 953 9841

MULTI-WELL PAD DIRECTIONAL LAYOUT

DIETRICH C08-30D, DIETRICH C07-22D, DIETRICH C07-18D

SECTION 7, TOWNSHIP 4 NORTH, RANGE 64 WEST OF THE 6TH PRINCIPAL MERIDIAN

NAD 83 LATITUDE AND LONGITUDE**DIETRICH C08-30D SURFACE HOLE:**

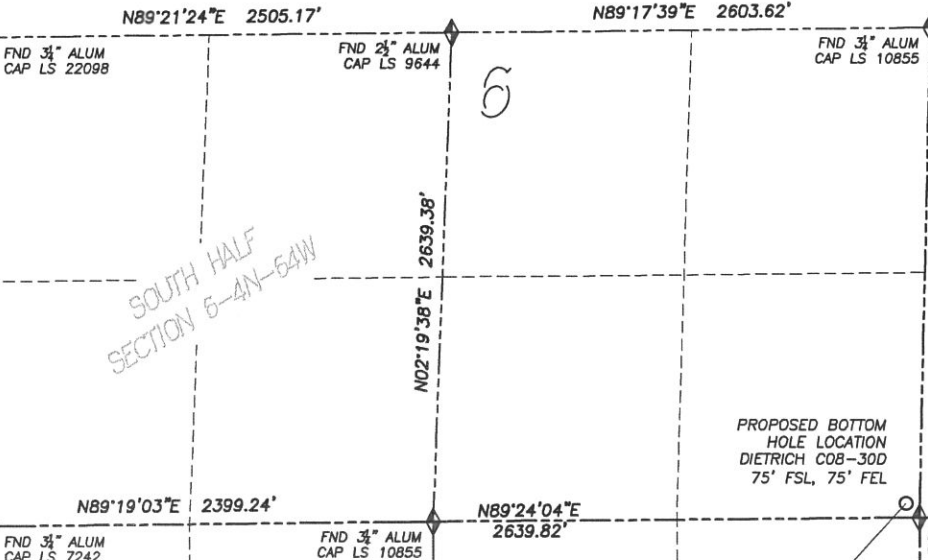
LATITUDE: N40.33054°
 LONGITUDE: W104.58874°
 ELEVATION: 4817'
 FOOTAGE: 1277' FNL, 1327' FEL
 PDOP: 2.3
 QTR/QTR: NW4/NE4
 PROP LINE: 9'± EAST

BOTTOM HOLE:

LATITUDE: N40.33429°
 LONGITUDE: W104.58423°
 FOOTAGE: 75' FSL, 75' FEL, SEC.6

NEAREST EXISTING WELL:

DIETRICH 7-17 SURFACE HOLE
 LATITUDE: N40.33054°
 LONGITUDE: W104.58857°
 ELEVATION: 4815'
 47' EAST

**NAD 83 LATITUDE AND LONGITUDE****DIETRICH C07-18D SURFACE HOLE:**

LATITUDE: N40.33055°
 LONGITUDE: W104.58890°
 ELEVATION: 4817'
 FOOTAGE: 1275' FNL, 1372' FEL
 PDOP: 2.2
 QTR/QTR: NW4/NE4
 PROP LINE: 54'± EAST

BOTTOM HOLE:

LATITUDE: N40.33038°
 LONGITUDE: W104.59394°
 FOOTAGE: 1320' FNL, 2260' FWL

PROPOSED
 DIETRICH C08-30D
 DIETRICH C07-22D
 DIETRICH C07-18D

PROPOSED BOTTOM
 HOLE LOCATION
 DIETRICH C07-18D
 1320' FNL, 2260' FWL

EXISTING
 DIETRICH C7-17
 DIETRICH C08-32D
 DIETRICH C08-31D

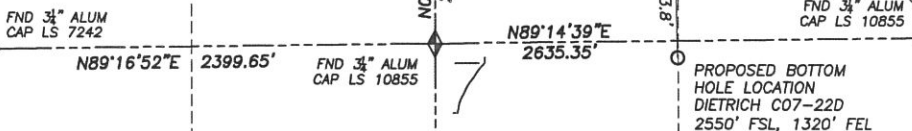
APPROXIMATE BOTTOM
 HOLE LOCATIONS FOR
 DIETRICH C08-31D &
 DIETRICH C08-32D
 AS DEPICTED ON
 SURVEYS OBTAINED FROM
 COGCC DATABASE

DIETRICH C08-31D BOTTOM HOLE:

(FROM SURVEY IN COGCC DATABASE)
 LATITUDE: N40.33031°
 LONGITUDE: W104.58452°

DIETRICH C08-32D BOTTOM HOLE:

(FROM SURVEY IN COGCC DATABASE)
 LATITUDE: N40.32709°
 LONGITUDE: W104.58372°

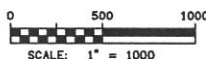
**NAD 83 LATITUDE AND LONGITUDE****DIETRICH C07-22D SURFACE HOLE:**

LATITUDE: N40.33055°
 LONGITUDE: W104.58882°
 ELEVATION: 4817'
 FOOTAGE: 1276' FNL, 1350' FEL
 PDOP: 2.3
 QTR/QTR: NW4/NE4
 PROP LINE: 31'± EAST

BOTTOM HOLE:

LATITUDE: N40.32656°
 LONGITUDE: W104.58872°
 FOOTAGE: 2550' FSL, 1320' FEL

LEGEND
 FND 3/4\"/>



WEST HALF
 SECTION 8-4N-64W

