



**CEMENT BOND/GAMMA RAY
CCL LOG**

Company EOG RESOURCES

Well CRITTER CREEK 2-03H
Field HERFORD
County WELD State CO

Company **EOG RESOURCES**
Well **CRITTER CREEK 2-03H**
Field **HERFORD**
County **WELD** State **CO**

Location: API #: 05-123-31047
Other Services: NONE

Permanent Datum: SEC 3 TWP 11N RGE 63W
Log Measured From: GL KB 21' ABOVE GL Elevation 5272'
Drilling Measured From: KB G.L. 5272'

Date of Service	11-APR-2010			
Run Number	ONE			
Depth Driller or PBTID	6700'			
Depth Logger	6675'			
Bottom Log Interval	6673'			
Top Log Interval	5000'			
Open Hole Size	N/A			
Type Fluid	WATER			
Fluid Level	SURFACE			
Fluid Density	N/A			
Max. Recorded Temperature	N/A			
Max. Wellhead Pressure	O PSI			
Wellhead Connection	7 1/16" 5K			
Estimated Cement Top	SEE LOG			
Unit Number	68			
Wireline Size	9/32"			
Location	ROCK SPRINGS			
Recorded By	D GRIMES			
Witnessed By	MR COOPER			
Tubing Record	Size	WFt	Top	Bottom
Surface Casing				
Production Casing	7"	23#	SURFACE	6800'
Liner Record				

<<< Fold Here >>>

All interpretations are opinions based on inferences from electrical or other measurements and Perf-O-Log cannot and does not guarantee the accuracy or correctness of any interpretation, and Perf-O-Log will not, except in the case of gross or willful negligence on our part, be liable or responsible for any loss, costs, damages, or expenses incurred or sustained by anyone resulting from any interpretation made by any of our officers, agents or employees. These interpretations are also subject to Perf-O-Log's general terms and conditions set out in our current Price Schedule.

Comments

WIRELINE MEASUREMENT ONLY

THANK YOU FOR USING PERF-O-LOG

Your Perf-O-Log Crew	Tool Data - Services	Serial Number
Engineer: D GRIMES	CCL	POL 237
Operator: D STRAW	GAMMA RAY	POL 135
Operator: S RAUERT	SCBL	POL 3015
Operator:		

Operator	Offset (ft)	Substrate	Description	Log (#)	CD (in)	Wt (lb)
----------	-------------	-----------	-------------	---------	---------	---------

Sensor	Offset (ft)	Schematic	Description	Len (ft)	OD (in)	Wt (lb)	
CCL	19.25		CCL-MTEKCO (6) 2 3/4" TEKCO CCL	1.83	2.75	10.00	
			comp 2 3/4" COMPUTALOG BOW SPRING	2.64	2.75	10.00	
TEMP	13.37						
WVFS1	11.95						
WVFS2	11.95						
WVFS3	11.95			SCBL-TEKSECTEMP (SCBLTEMP) TEKCO 2 3/4" SECTOR/TEMP TOOL	9.04	2.75	90.00
WVFS4	11.95						
WVFS5	11.95						
WVFS6	11.95						
WVFS7	11.95						
WVFS8	11.95						
WVF3FT	11.20						
WVF5FT	10.20						
WVFCAL	6.91						
WVFTEMP	6.91						
			GR-MTEKCOHT (2.75HT) 2 3/4" TEKCO HI TEMP GAMMA RAY	4.27	2.75	40.00	
GR	3.72						
			comp 2 3/4" COMPUTALOG BOW SPRING	2.64	2.75	10.00	

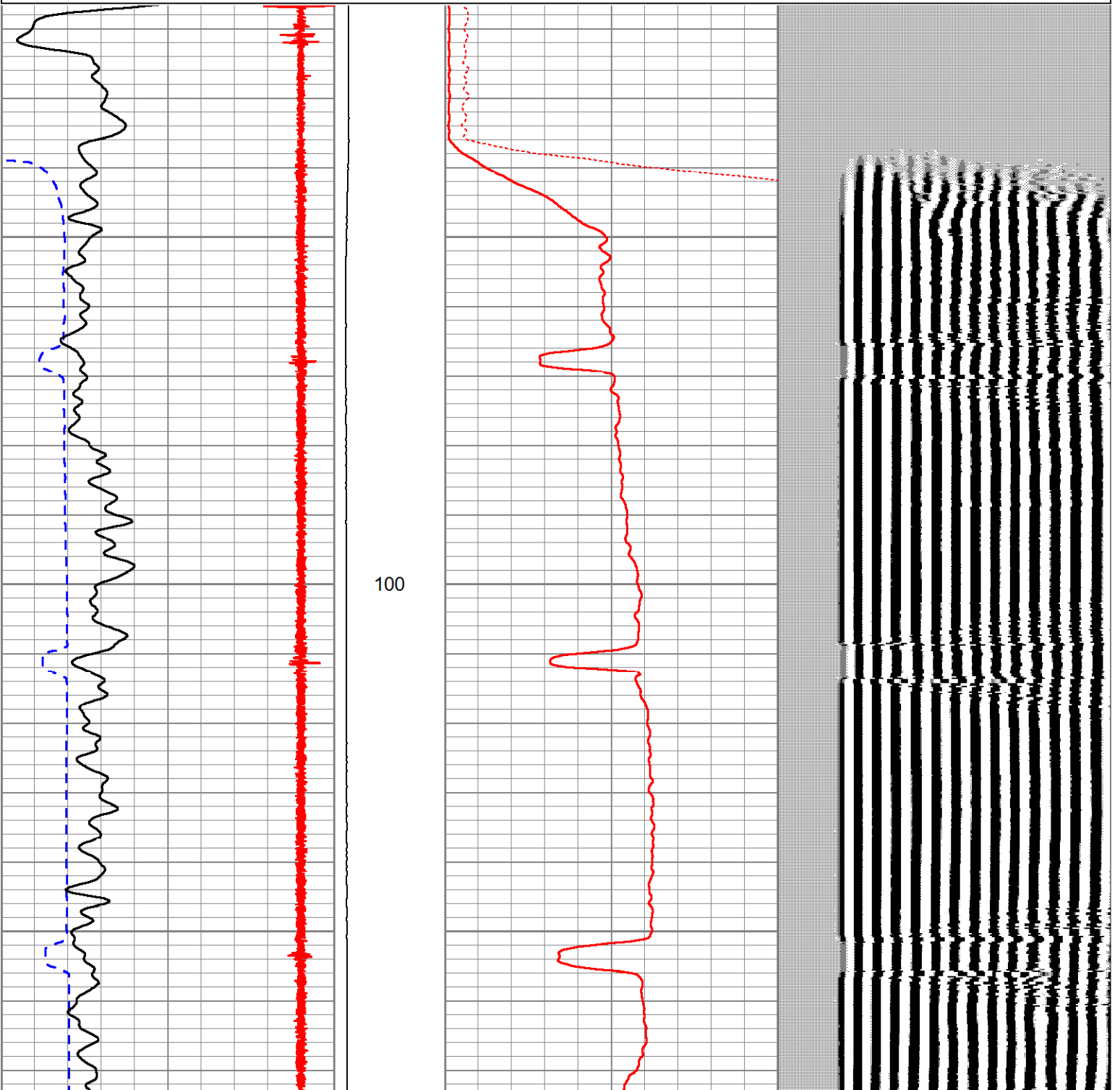
Dataset: 4112010eog.db: field/well/run1/pass8.4
 Total Length: 20.42 ft
 Total Weight: 160.00 lb
 O.D.: 2.75 in

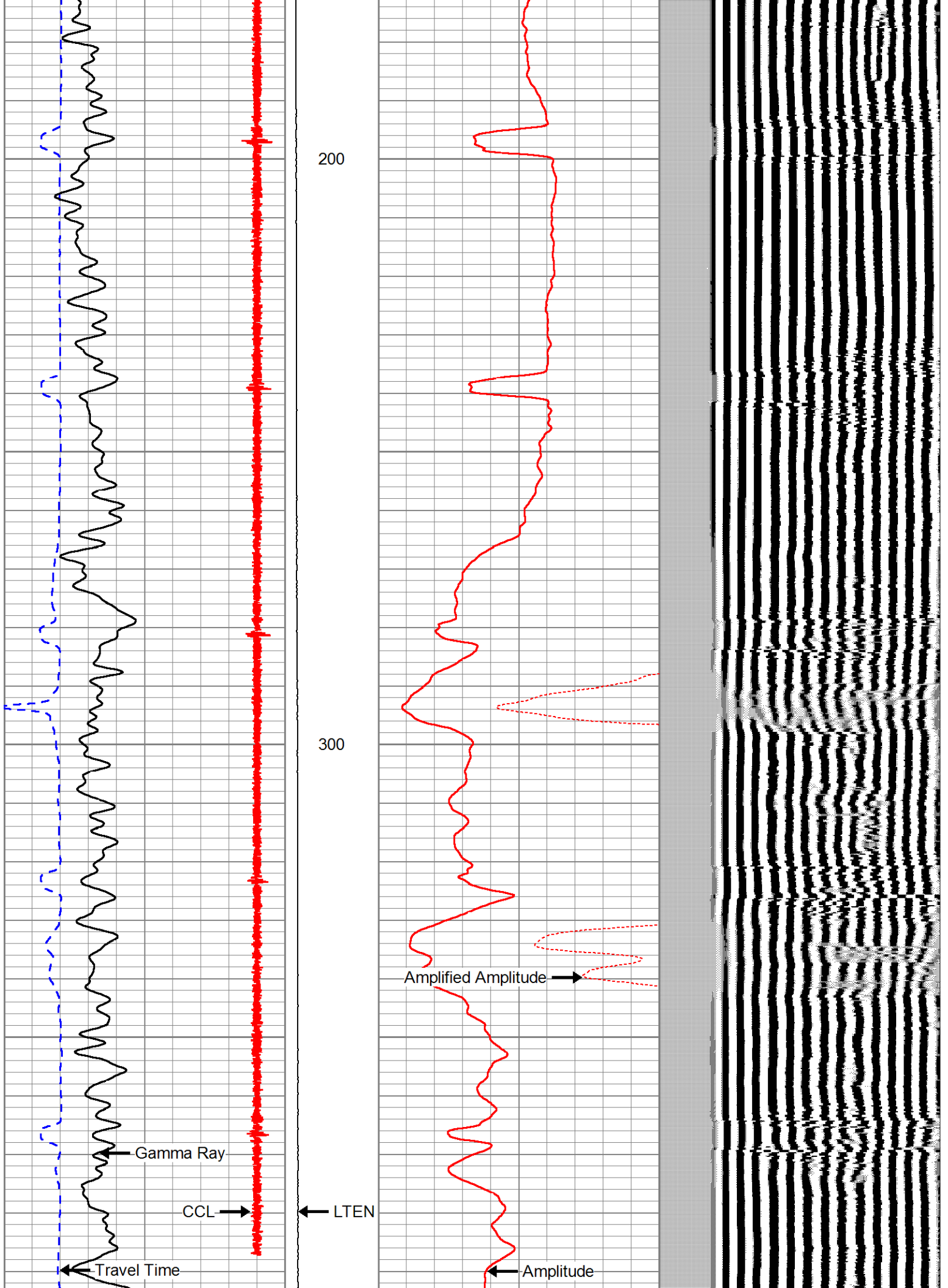


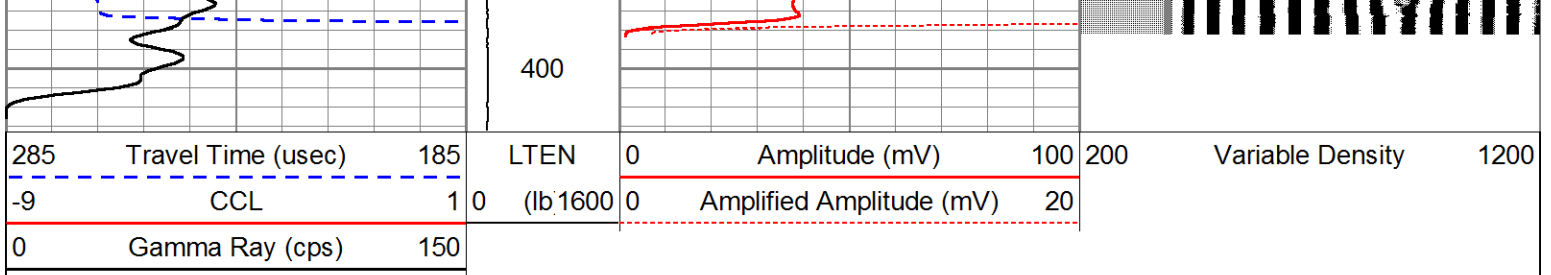
400'-SURFACE

Database File: 4112010eog.db
Dataset Pathname: pass8.1
Presentation Format: sec2cbl
Dataset Creation: Mon Apr 12 08:33:19 2010 by Calc Std Casedhole 07122
Charted by: Depth in Feet scaled 1:240

285	Travel Time (usec)	185	LTEN	0	Amplitude (mV)	100	200	Variable Density	1200
-9	CCL	1	0	(lb.1600	0	Amplified Amplitude (mV)	20		
0	Gamma Ray (cps)	150							





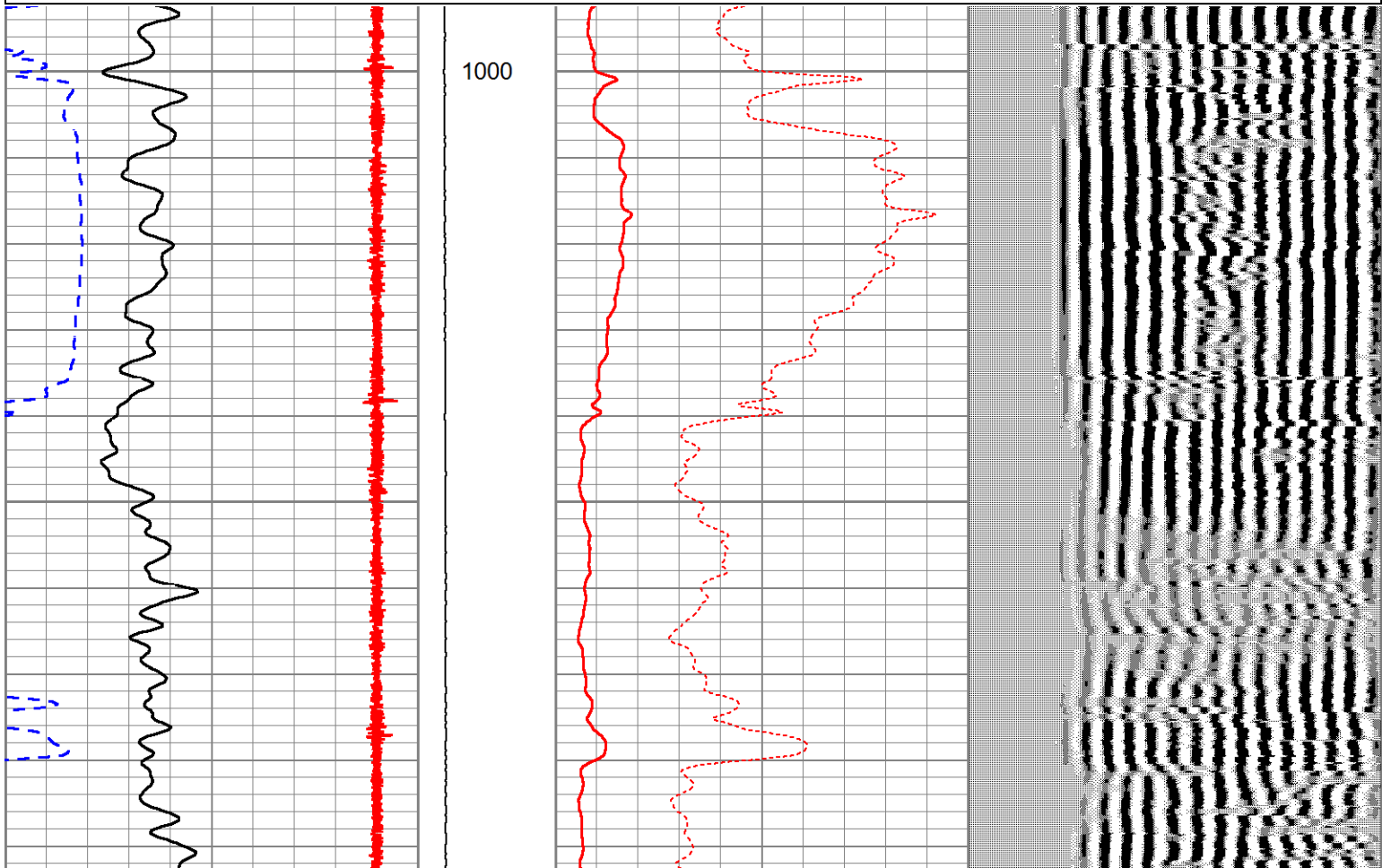
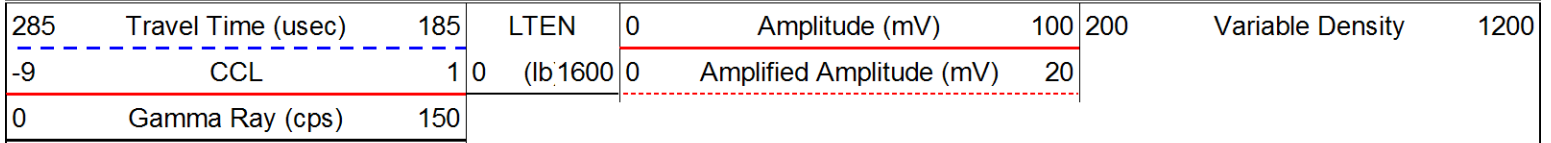


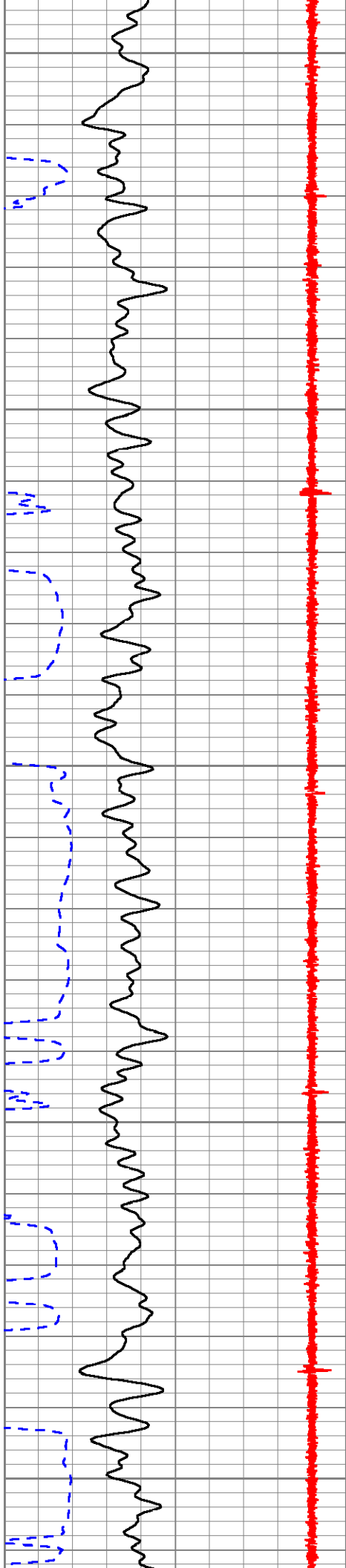
400'-SURFACE



1600'-1000'

Database File: 4112010eog.db
 Dataset Pathname: pass8.4
 Presentation Format: sec2cbl
 Dataset Creation: Mon Apr 12 08:35:59 2010 by Calc Std Casedhole 07122
 Charted by: Depth in Feet scaled 1:240

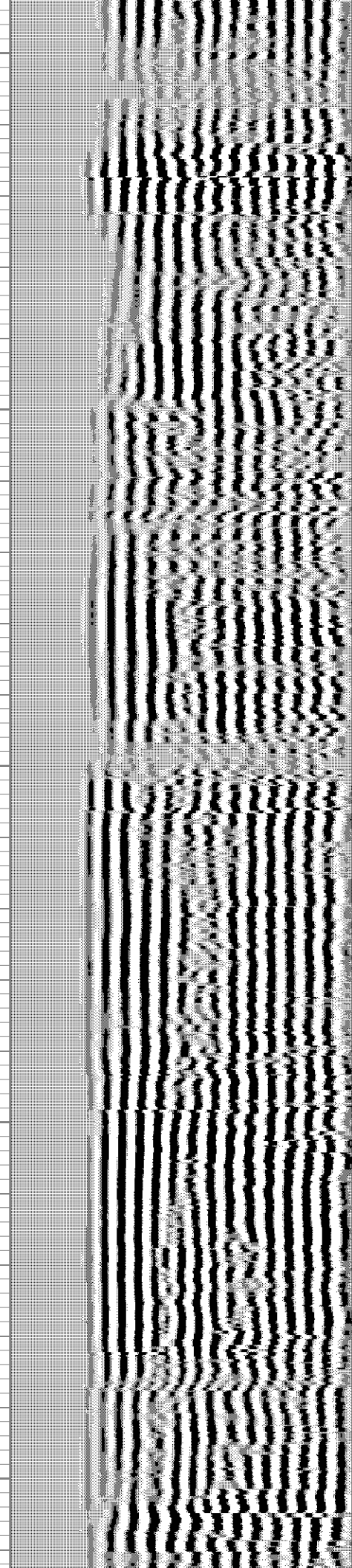


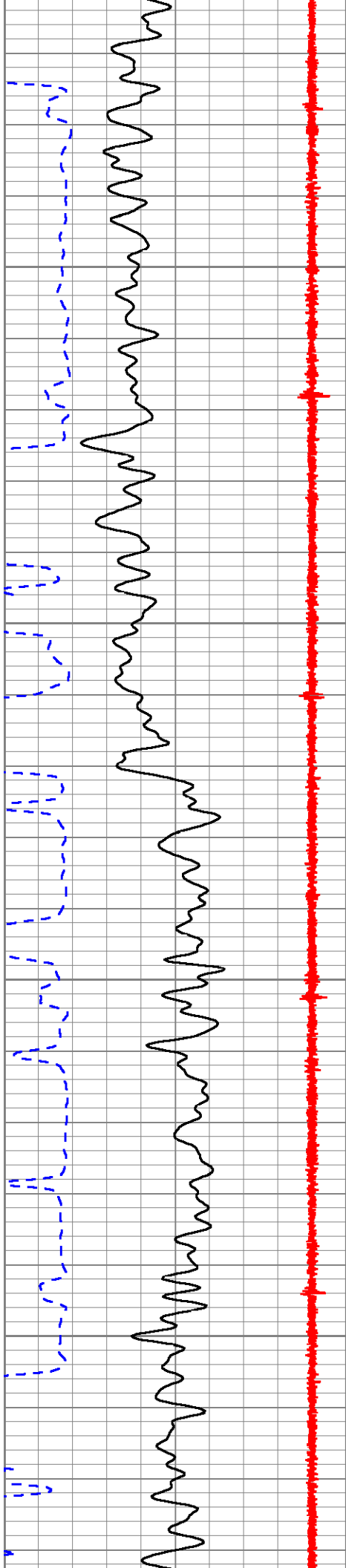


1100

1200

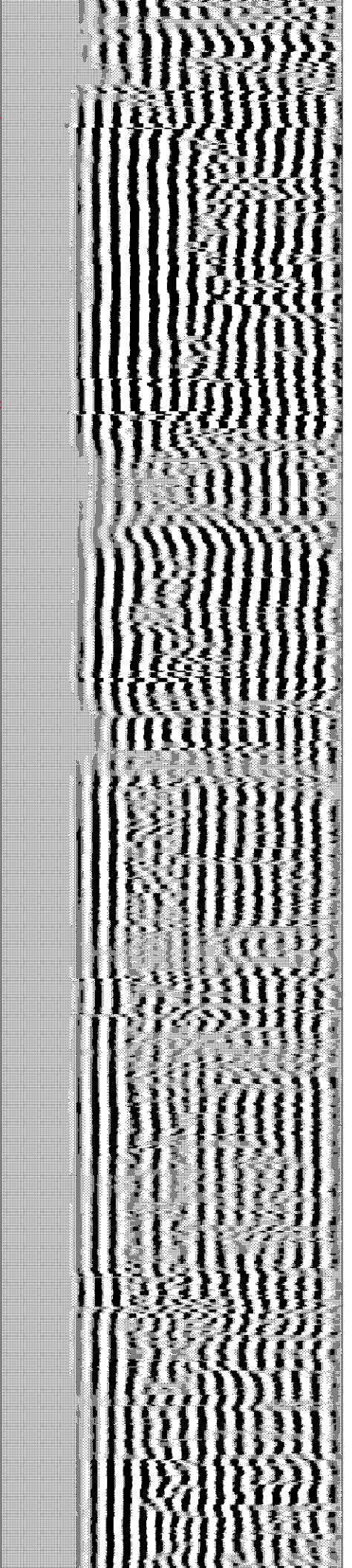
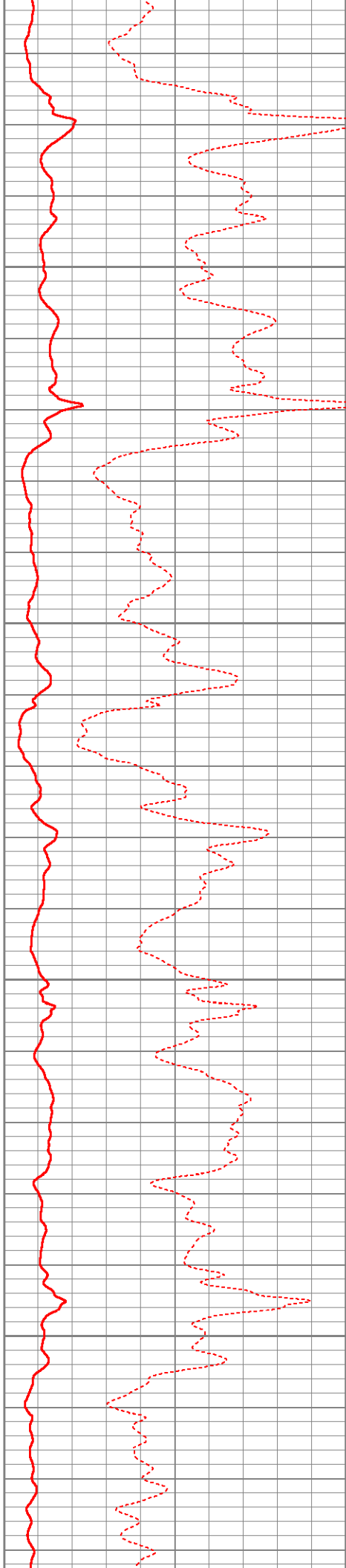
1300

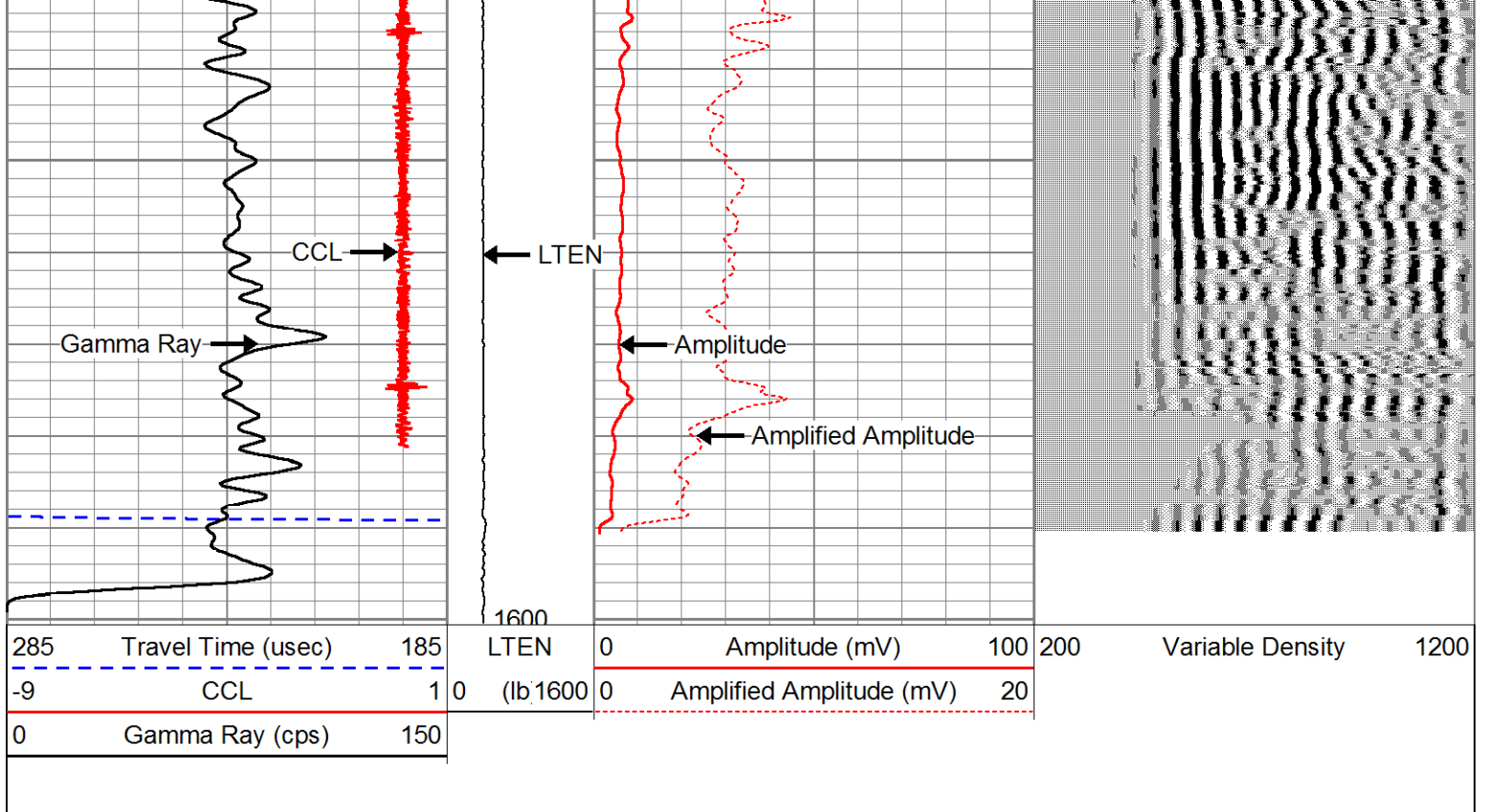




1400

1500





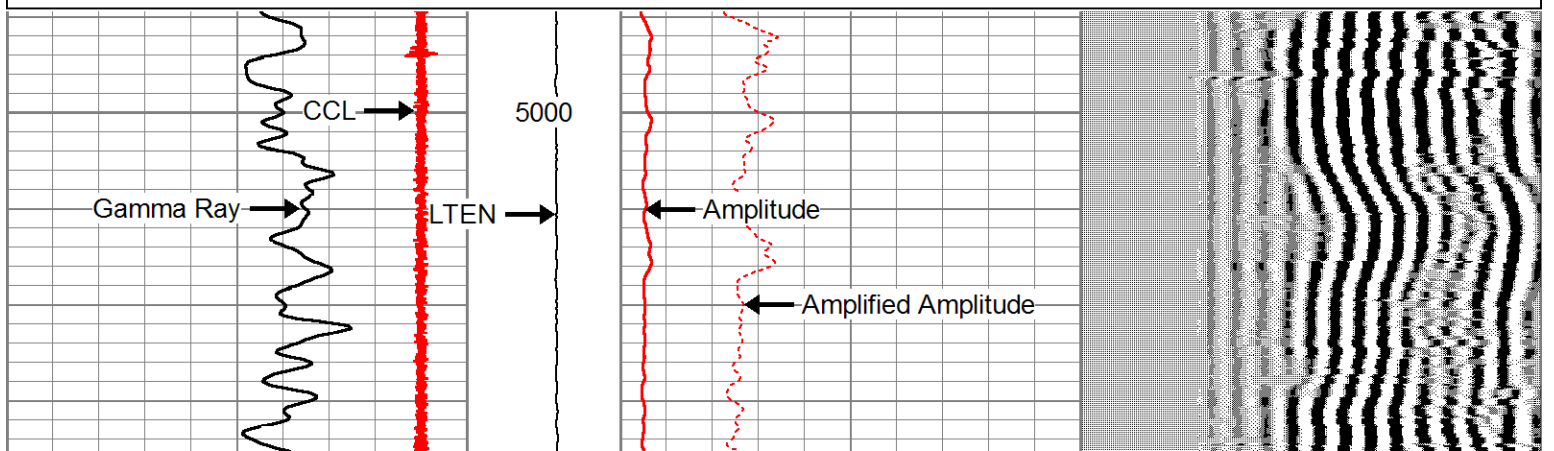
1600'-1000'

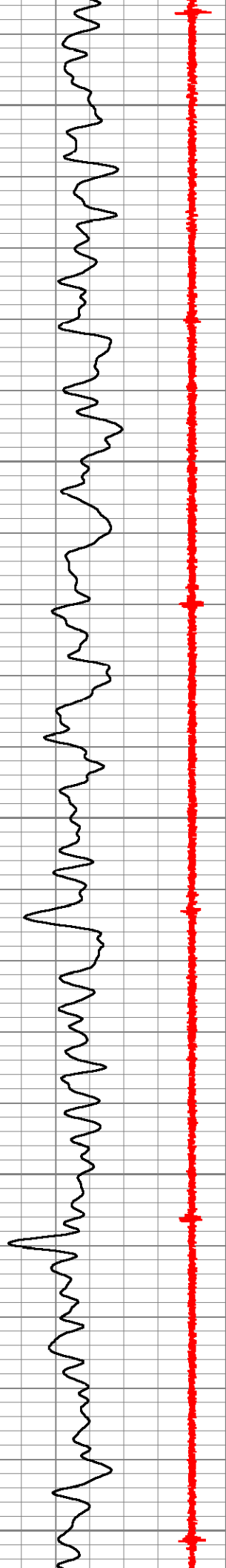


MAIN PASS

Database File: 4112010eog.db
 Dataset Pathname: pass8.3
 Presentation Format: sec2cbl
 Dataset Creation: Mon Apr 12 08:35:13 2010 by Calc Std Casedhole 07122
 Charted by: Depth in Feet scaled 1:240

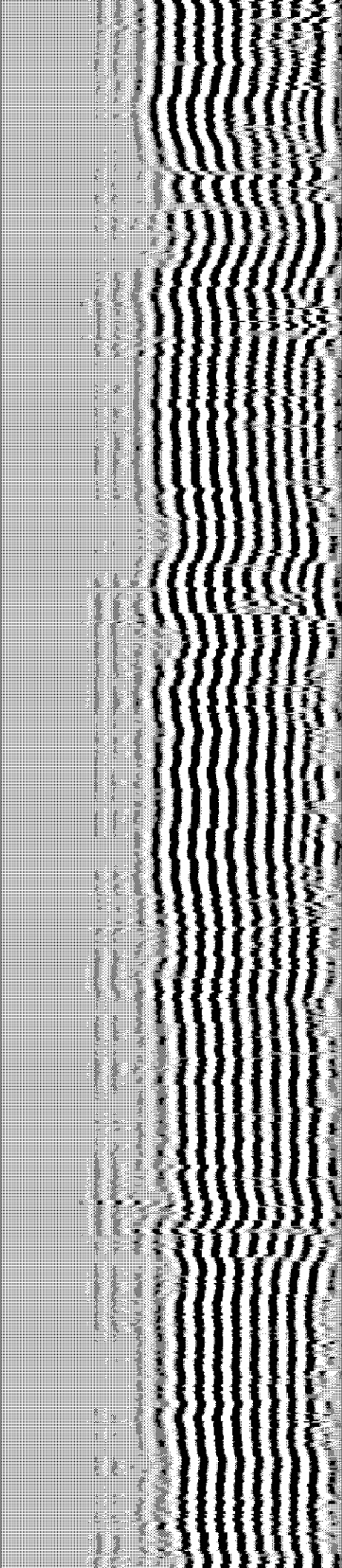
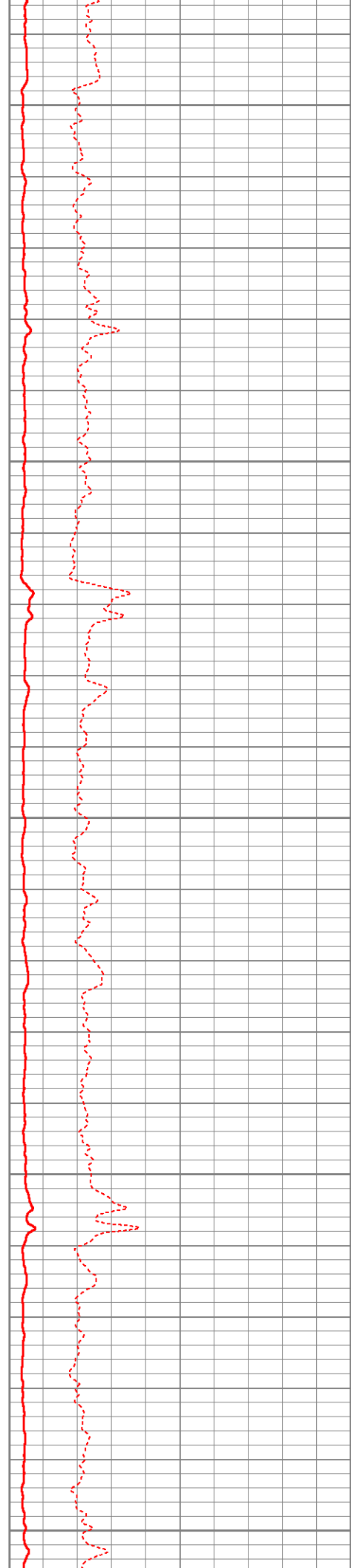
285	Travel Time (usec)	185	LTEN	0	Amplitude (mV)	100	200	Variable Density	1200
-9	CCL	1	0 (lb 1600)	0	Amplified Amplitude (mV)	20			
0	Gamma Ray (cps)	150							

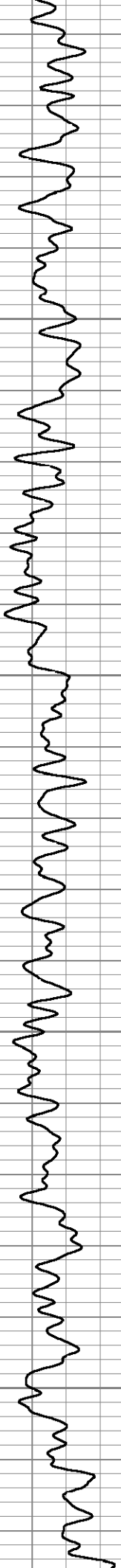




5100

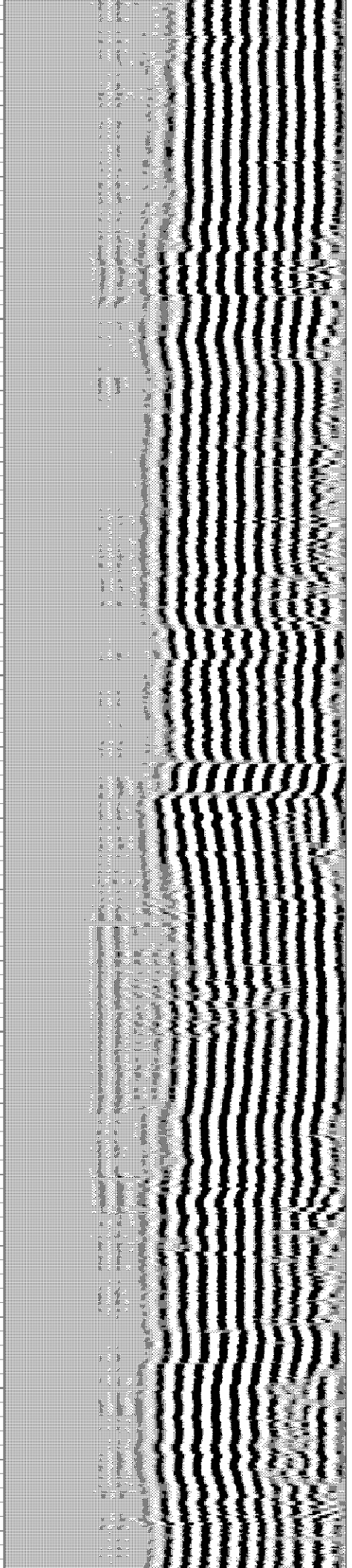
5200

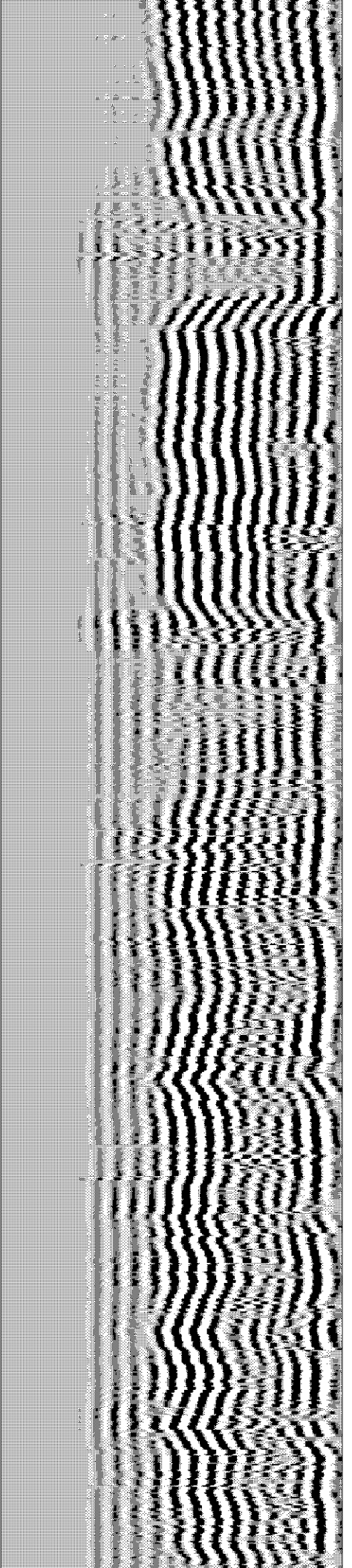
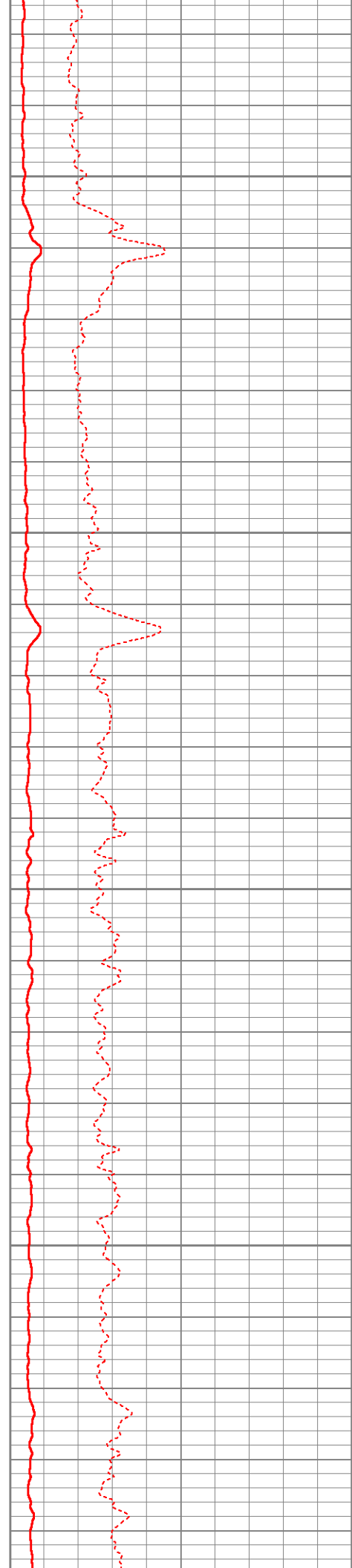
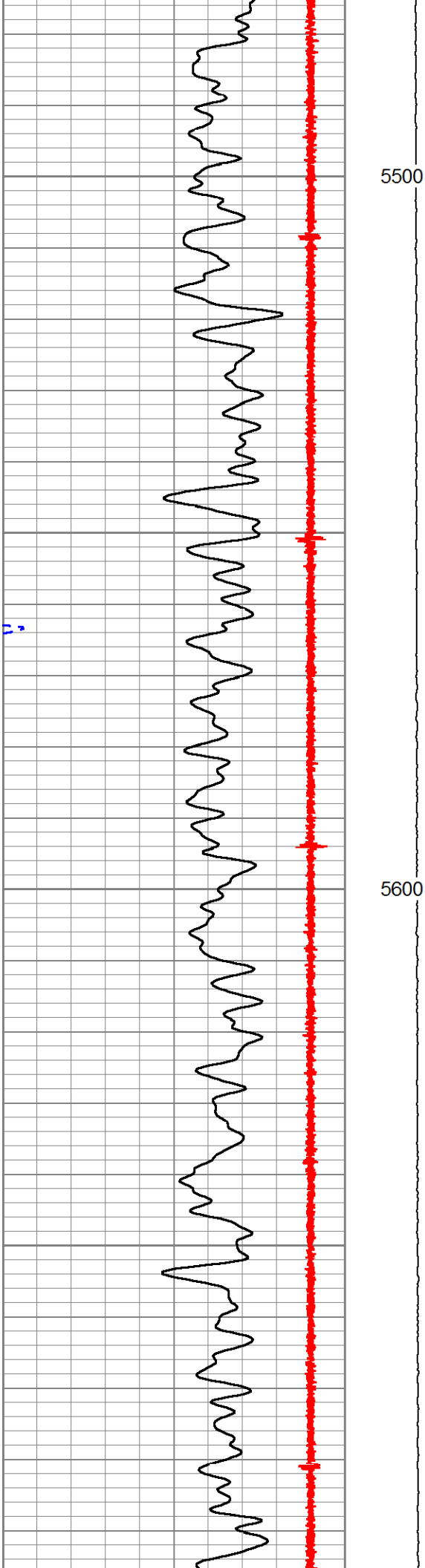


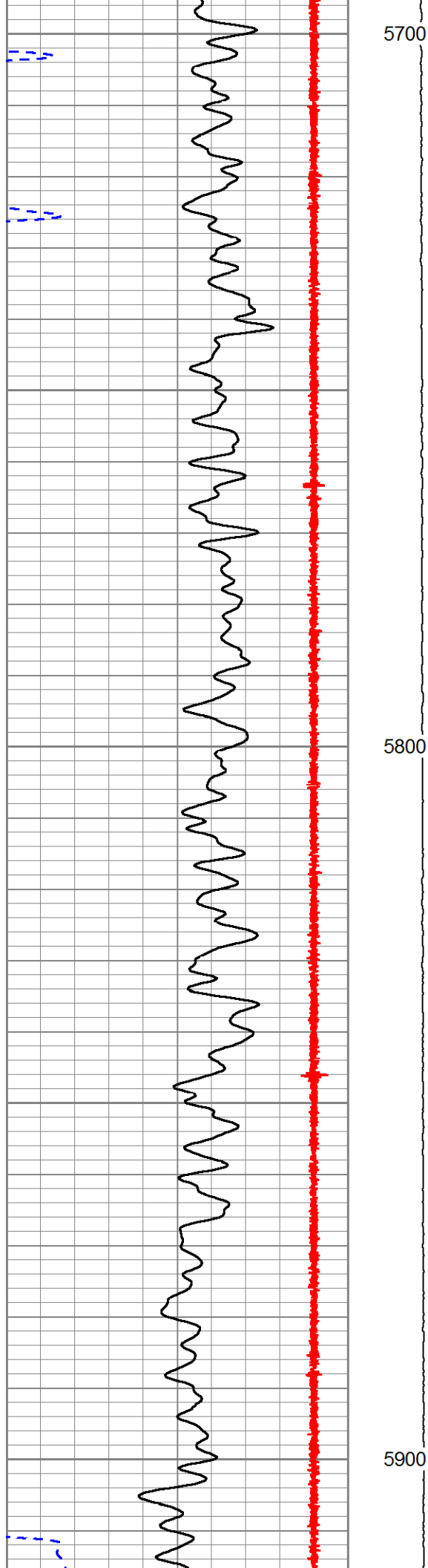


5300

5400



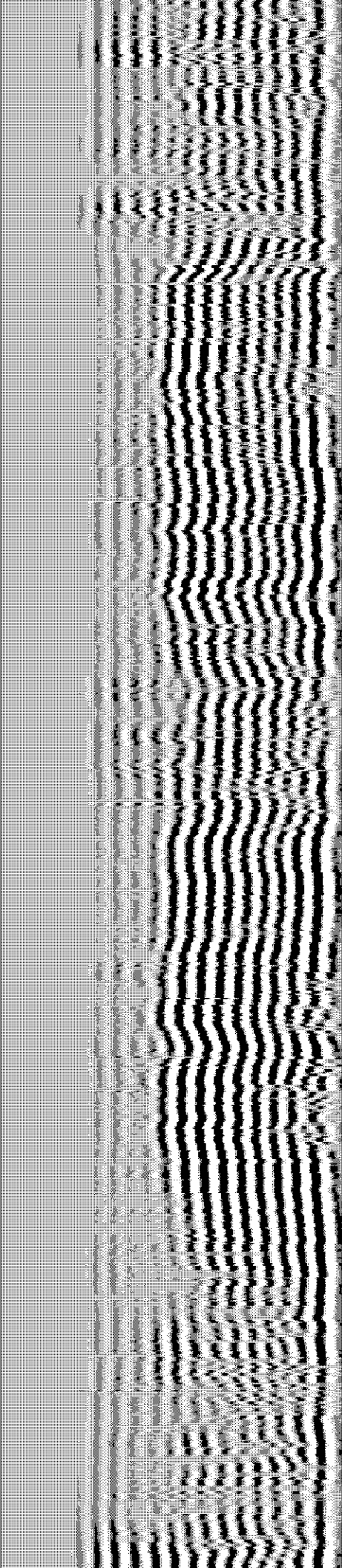
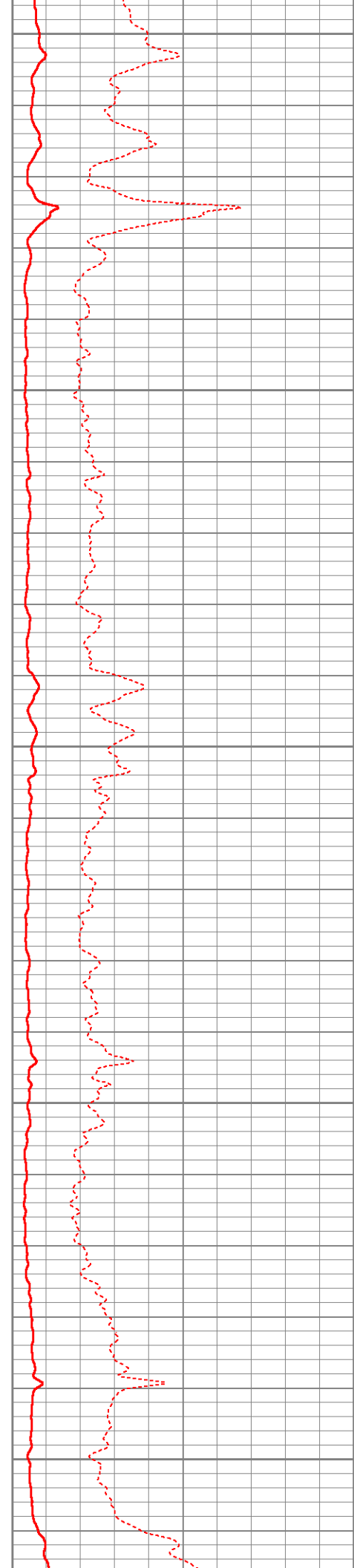


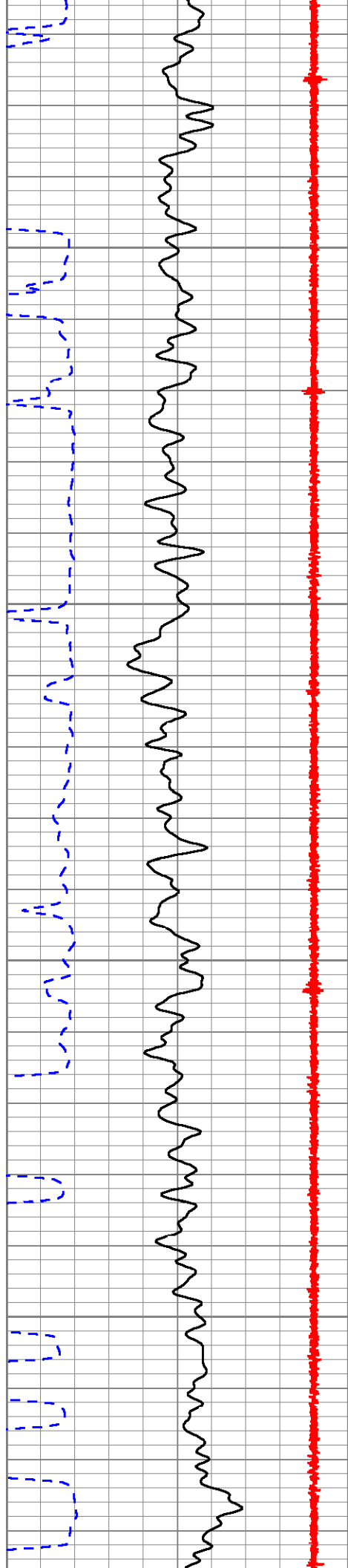


5700

5800

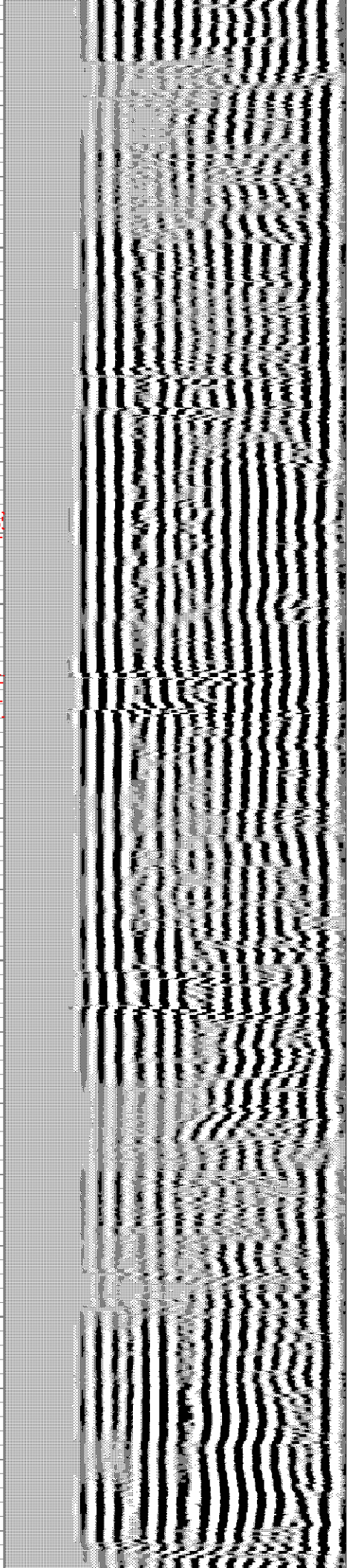
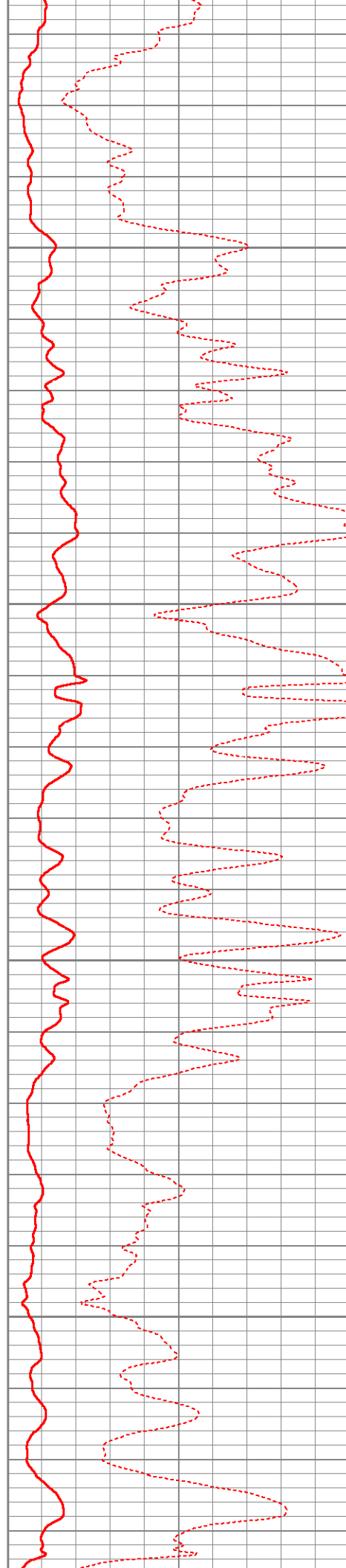
5900

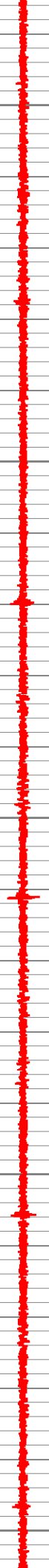
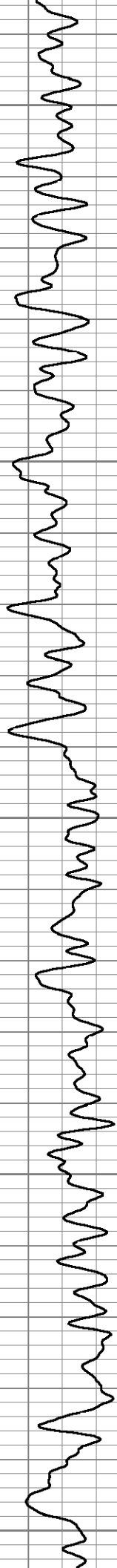




6000

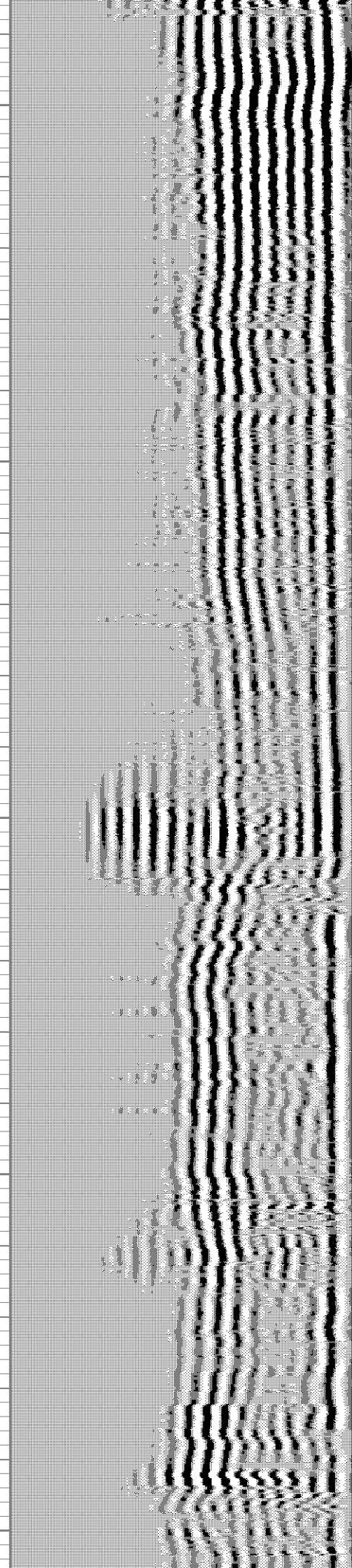
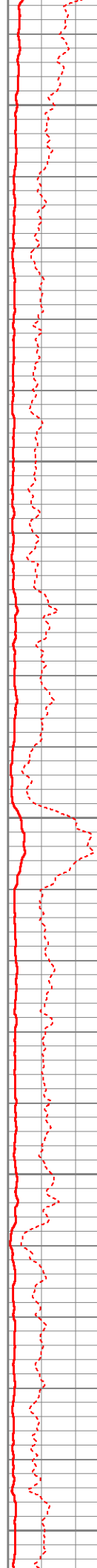
6100

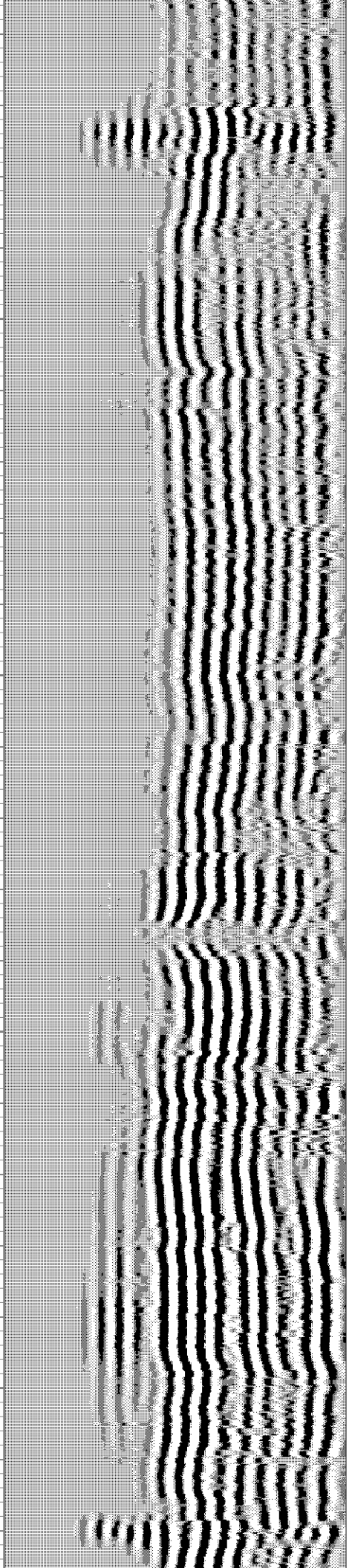
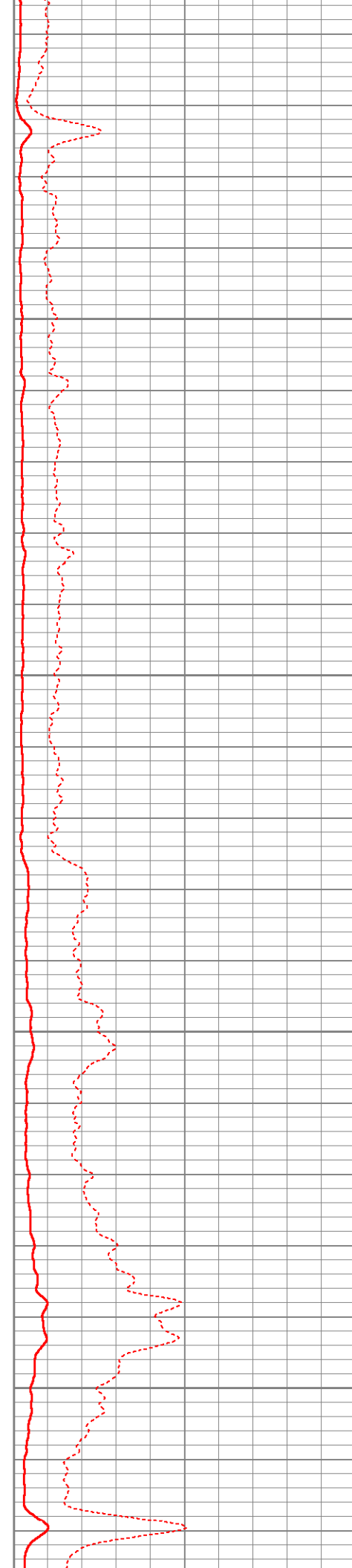
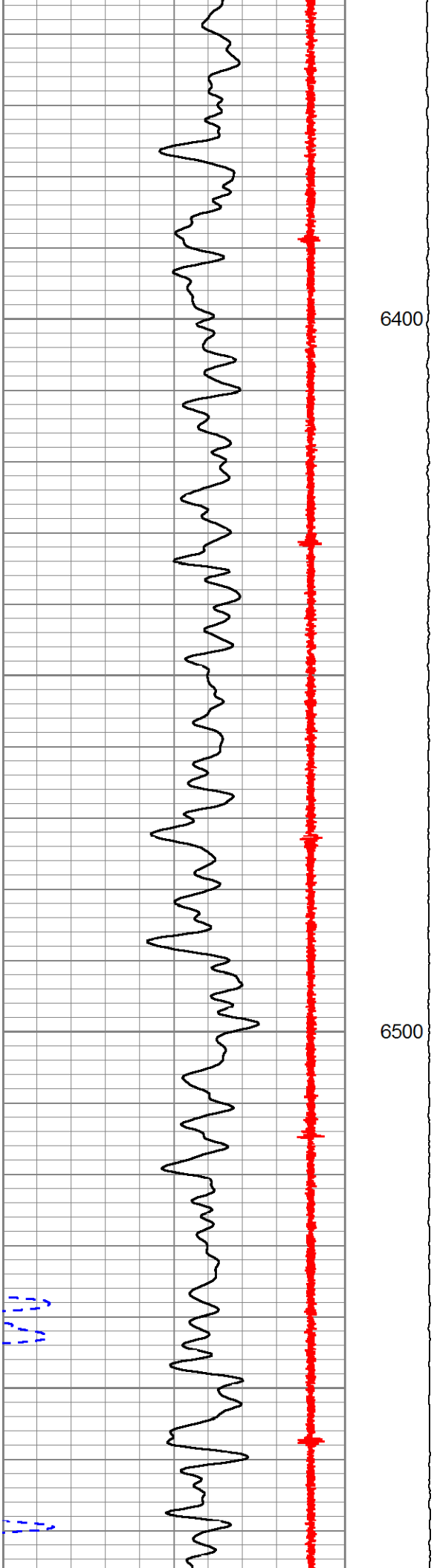


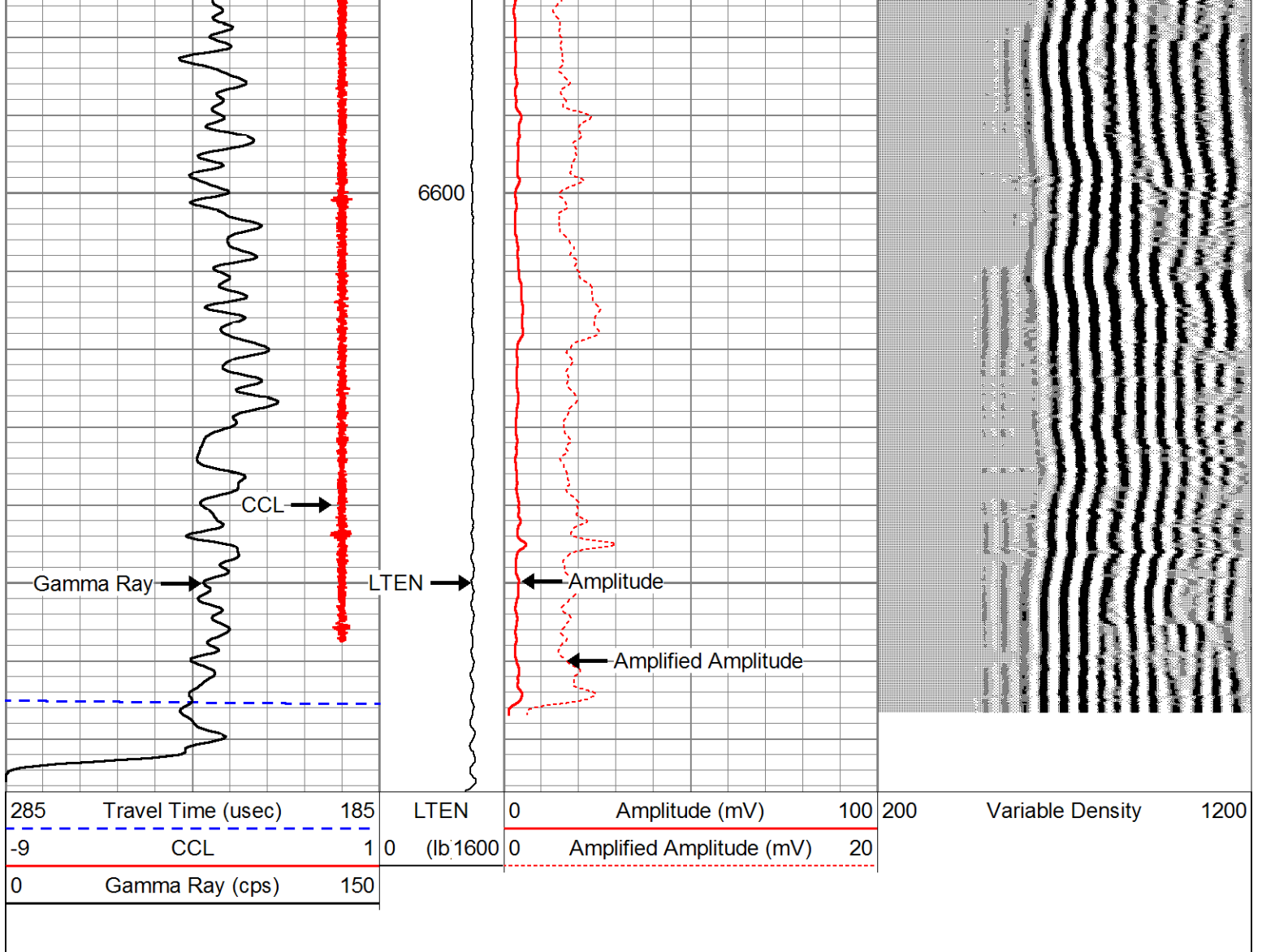


6200

6300







MAIN PASS

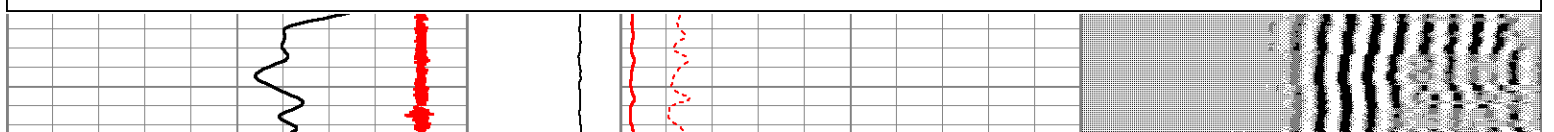


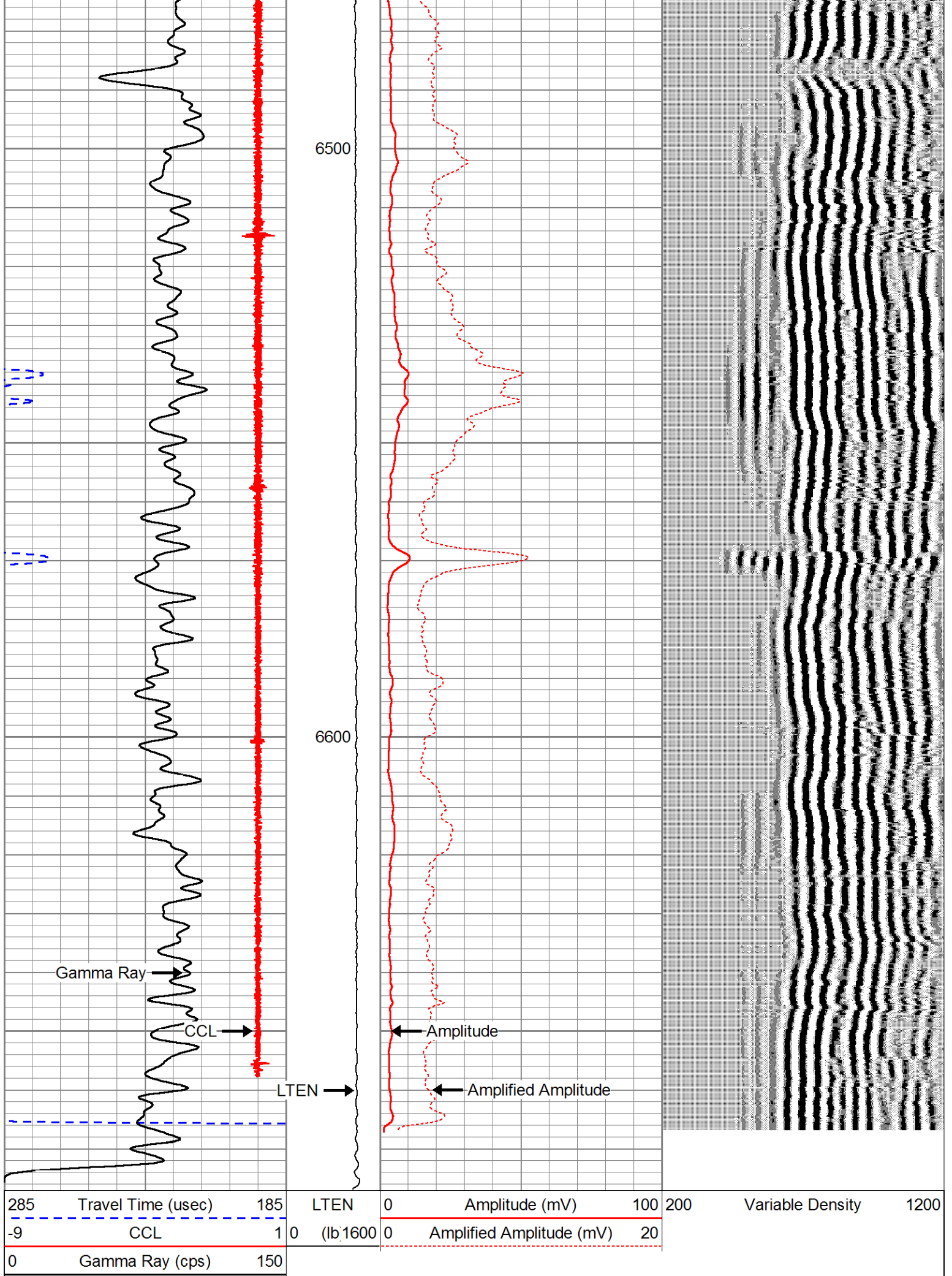
REPEAT PASS



Database File: 4112010eog.db
 Dataset Pathname: pass8.2
 Presentation Format: sec2cbl
 Dataset Creation: Mon Apr 12 08:34:07 2010 by Calc Std Casedhole 07122
 Charted by: Depth in Feet scaled 1:240

285	Travel Time (usec)	185	LTEN	0	Amplitude (mV)	100	200	Variable Density	1200
-9	CCL	1	0	(lb 1600)	0	Amplified Amplitude (mV)	20		
0	Gamma Ray (cps)	150							







REPEAT PASS

Calibration Report

Database File: 4112010eog.db
 Dataset Pathname: pass8.4
 Dataset Creation: Mon Apr 12 08:35:59 2010 by Calc Std Casedhole 07122

Gamma Ray Calibration Report

Serial Number: 2.75HT
 Tool Model: MTEKCOHT
 Performed: Sun Jun 13 13:33:21 1993

Calibrator Value: 1.0 cps

Background Reading: 0.0 cps
 Calibrator Reading: 1.0 cps

Sensitivity: 1.0000 cps/cps

Segmented Cement Bond Log Calibration Report

Serial Number: SCBLTEMP
 Tool Model: TEKSECTEMP

Calibration Casing Diameter: 7.000 in
 Calibration Depth: 155.093 ft

Master Calibration, performed Sun Apr 11 20:51:07 2010:

	Raw (v)		Calibrated (mv)		Results	
	Zero	Cal	Zero	Cal	Gain	Offset
3'	-0.001	0.226	1.000	62.165	269.265	1.270
CAL	-0.001	0.041				
5'	-0.001	0.229	1.000	62.165	266.609	1.238
SUM						
S1	-0.001	0.079	0.000	100.000	1248.590	0.945
S2	-0.001	0.063	0.000	100.000	1577.810	0.982
S3	-0.001	0.056	0.000	100.000	1755.300	1.350
S4	-0.001	0.060	0.000	100.000	1653.610	1.352
S5	-0.001	0.076	0.000	100.000	1298.050	1.077
S6	-0.001	0.102	0.000	100.000	970.041	0.782
S7	-0.001	0.113	0.000	100.000	880.766	0.763
S8	-0.001	0.099	0.000	100.000	1001.830	0.991

Internal Reference Calibration, performed Wed Dec 31 17:00:00 1969:

	Raw (v)		Calibrated (v)		Results	
	Zero	Cal	Zero	Cal	Gain	Offset
CAL	0.000	0.000	-0.001	0.041	1.000	0.000

Air Zero Calibration, performed Wed Dec 31 17:00:00 1969:

Raw (v)	Calibrated (v)	Results
---------	----------------	---------

	Zero	Zero	Offset
3'	0.000	0.000	0.000
5'	0.000	0.000	0.000
SUM			
S1	0.000	0.000	0.000
S2	0.000	0.000	0.000
S3	0.000	0.000	0.000
S4	0.000	0.000	0.000
S5	0.000	0.000	0.000
S6	0.000	0.000	0.000
S7	0.000	0.000	0.000
S8	0.000	0.000	0.000

Temperature Calibration Report

Serial Number: SCBLTEMP
Tool Model: TEKSECTEMP
Performed: Mon Nov 12 07:07:39 2007

	Reference		Reading	
Low Reference:	0.00	degF	0.00	usec
High Reference:	1.00	degF	1.00	usec

Gain: 0.33
Offset: -30.00
Delta Spacing: 1



Company: EOG RESOURCES
Well: CRITTER CREEK 2-03H
Field: HERFORD
County: WELD
State: CO