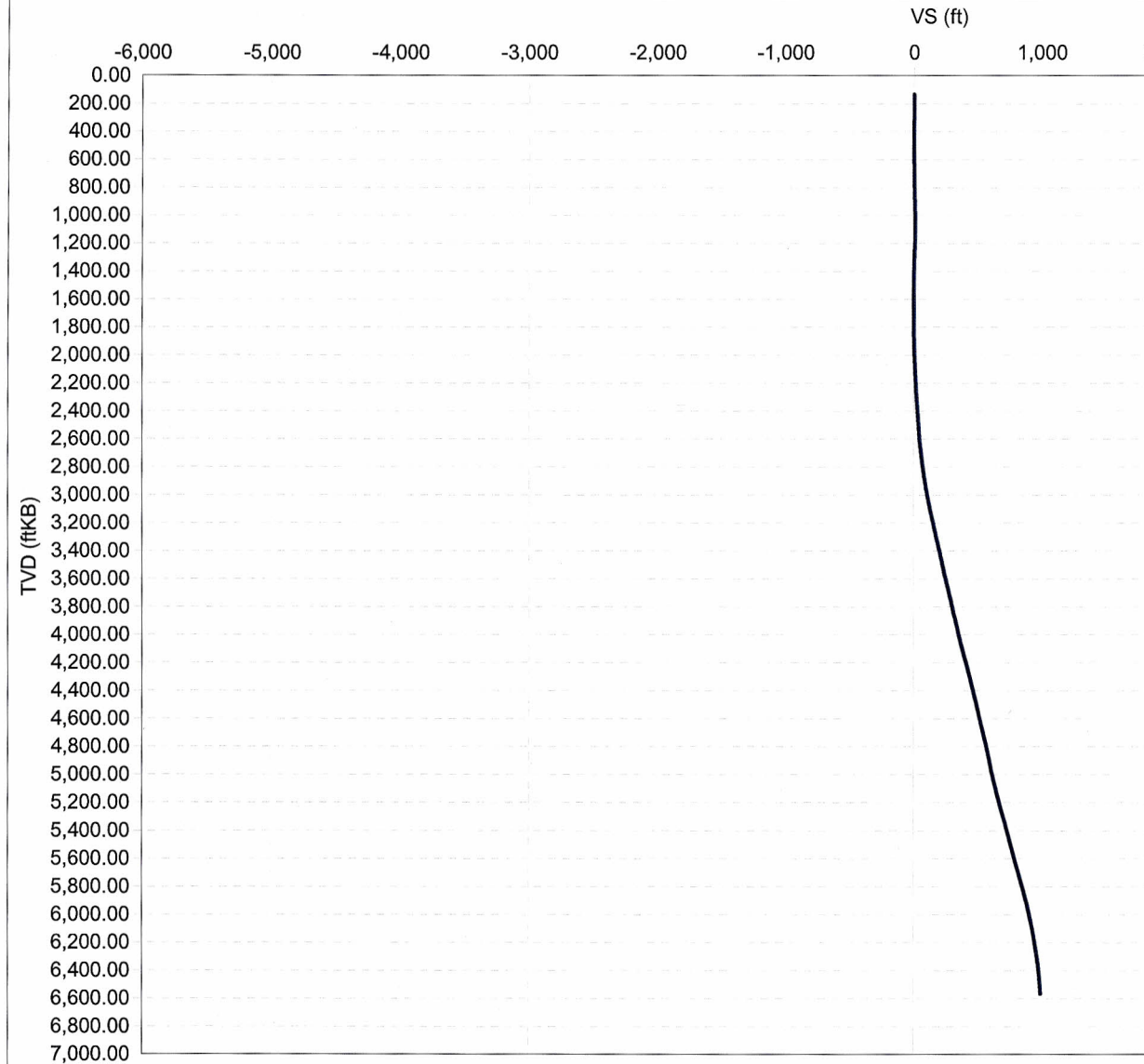




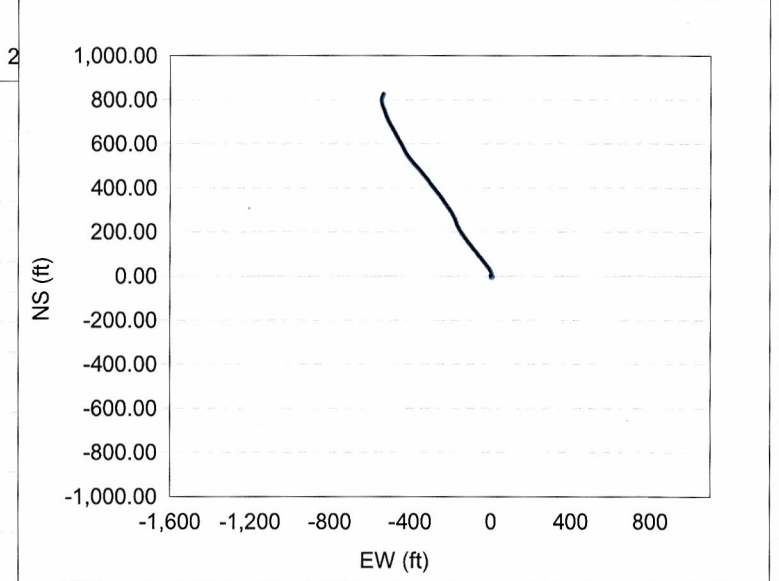
Directional Plot

Well Name Hagood MC B 02	Lease Hagood, M.C.	Field Name Rangely	Business Unit Mid-Continent/Alaska	Surface UWI 0510311870	Surface ChevNo NB2239
Wellbore Name Original Hole	Directional Type Vertical	Kick Off Depth (ftKB)	Total Depth of Wellbore (ftKB) 6,910.00	Wellbore UWI 0510311870-00	Wellbore ChevNo NB2239-00

Vertical Section



Plan



— VS vs TVD

— VS vs TVD



Directional Survey Data

Well Name Hagood MC B 02	Lease Hagood, M.C.	Field Name Rangely	Business Unit Mid-Continent/Alaska	Surface UWI 0510311870	Surface ChevNo NB2239
Wellbore Name Original Hole	Directional Type Vertical	Wellbore UWI 0510311870-00	Wellbore ChevNo NB2239-00	Kick Off Depth (ftKB) 6,910.00	Total Depth (ftKB) 6,910.00
UTM Northing (Y) (ft)	UTM Easting (X) (ft)	UTM Grid Zone	Latitude (DMS)	Longitude (DMS)	Date TD Reached (wellbore) 7/20/2011 16:30
					Closure Direction (°) 327.17

Directional Surveys					
Description surveys		Planned? No	Definitive? Yes	Note Correction	

Survey Data											
Survey Company	Date	MD (ftKB)	TVD (ftKB)	Incl (°)	Azm (°)	VS (ft)	NS (ft)	EW (ft)	DLS (°/100ft)	Build (°/100ft)	Turn (°/100ft)
	6/20/2011	129.00	129.00	0.18	146.30	-0.20	-0.17	0.11	0.14	0.14	113.41
	6/20/2011	191.00	191.00	0.26	134.78	-0.44	-0.35	0.27	0.15	0.13	-18.58
	6/20/2011	283.00	283.00	0.44	106.40	-0.91	-0.60	0.75	0.27	0.20	-30.85
	6/20/2011	375.00	374.99	0.79	90.93	-1.53	-0.71	1.73	0.42	0.38	-16.82
	6/20/2011	468.00	467.98	1.28	85.46	-2.38	-0.63	3.40	0.54	0.53	-5.88
	6/20/2011	560.00	559.96	1.09	25.00	-2.40	0.24	4.80	1.31	-0.21	-65.72
	6/20/2011	652.00	651.95	0.98	347.34	-1.19	1.80	4.99	0.73	-0.12	350.37
	6/20/2011	744.00	743.93	1.09	346.50	0.37	3.42	4.62	0.12	0.12	-0.91
	6/20/2011	820.00	819.92	1.13	349.61	1.75	4.86	4.31	0.10	0.05	4.09
	6/20/2011	910.00	909.90	1.27	327.12	3.56	6.57	3.61	0.54	0.16	-24.99
	6/20/2011	1,000.00	999.87	1.76	278.48	5.47	7.61	1.70	1.47	0.54	-54.04
	6/20/2011	1,090.00	1,089.81	2.60	247.86	6.76	7.05	-1.55	1.56	0.93	-34.02
	6/20/2011	1,181.00	1,180.74	2.37	189.10	5.75	4.41	-3.76	2.69	-0.25	-64.57
	6/20/2011	1,271.00	1,270.68	1.78	156.79	2.98	1.29	-3.51	1.43	-0.66	-35.90
	6/20/2011	1,361.00	1,360.64	1.85	130.48	0.21	-0.94	-1.85	0.92	0.08	-29.23
	6/20/2011	1,451.00	1,450.60	1.55	83.68	-1.72	-1.75	0.46	1.53	-0.33	-52.00
	6/20/2011	1,541.00	1,540.58	0.65	69.88	-2.38	-1.44	2.15	1.04	-1.00	-15.33
	6/21/2011	1,631.00	1,630.57	0.83	61.29	-2.54	-0.95	3.20	0.23	0.20	-9.54
	6/21/2011	1,721.00	1,720.56	1.06	68.57	-2.75	-0.33	4.55	0.29	0.26	8.09
	6/21/2011	1,811.00	1,810.55	1.29	25.49	-2.38	0.89	5.76	0.99	0.26	-47.87
	6/21/2011	1,902.00	1,901.52	1.46	336.98	-0.70	2.88	5.75	1.25	0.19	342.30
	6/21/2011	1,973.00	1,972.48	2.39	336.50	1.65	5.07	4.80	1.31	1.31	-0.68
	6/24/2011	2,067.00	2,066.39	2.52	337.38	5.62	8.77	3.23	0.14	0.14	0.94
	6/24/2011	2,157.00	2,156.27	3.45	344.15	10.16	13.20	1.73	1.10	1.03	7.52
	6/24/2011	2,248.00	2,247.09	3.78	336.23	15.74	18.58	-0.23	0.66	0.36	-8.70
	6/24/2011	2,338.00	2,336.86	4.40	339.13	22.05	24.52	-2.65	0.73	0.69	3.22
	6/24/2011	2,428.00	2,426.59	4.48	330.78	28.93	30.82	-5.60	0.72	0.09	-9.28
	6/24/2011	2,518.00	2,516.30	4.80	317.11	36.15	36.64	-9.88	1.28	0.36	-15.19
	6/24/2011	2,608.00	2,605.89	6.07	322.78	44.60	43.19	-15.32	1.53	1.41	6.30
	6/24/2011	2,698.00	2,695.30	7.12	319.88	54.88	51.25	-21.79	1.22	1.17	-3.22
	6/24/2011	2,788.00	2,784.50	8.18	316.40	66.70	60.15	-29.80	1.28	1.18	-3.87
	6/24/2011	2,878.00	2,873.32	10.31	317.60	80.93	70.73	-39.65	2.38	2.37	1.33
	6/24/2011	2,968.00	2,961.71	11.43	320.41	97.73	83.55	-50.76	1.38	1.24	3.12
	6/24/2011	3,058.00	3,049.73	12.60	317.71	116.27	97.69	-63.05	1.44	1.30	-3.00
	6/24/2011	3,148.00	3,137.46	13.19	318.04	136.09	112.59	-76.52	0.66	0.66	0.37
	6/24/2011	3,237.00	3,224.13	13.10	319.27	156.11	127.78	-89.89	0.33	-0.10	1.38
	6/24/2011	3,327.00	3,311.58	14.26	318.06	177.16	143.76	-103.96	1.33	1.29	-1.34
	6/24/2011	3,417.00	3,398.62	15.21	320.15	199.82	161.06	-118.93	1.21	1.06	2.32
	6/24/2011	3,507.00	3,485.83	13.37	324.01	221.93	178.55	-132.61	2.30	-2.04	4.29



Directional Survey Data

Well Name Hagood MC B 02	Lease Hagood, M.C.	Field Name Rangely	Business Unit Mid-Continent/Alaska	Surface UWI 0510311870	Surface ChevNo NB2239
-----------------------------	-----------------------	-----------------------	---------------------------------------	---------------------------	--------------------------

Survey Data											
Survey Company	Date	MD (ftKB)	TVD (ftKB)	Incl (°)	Azm (°)	VS (ft)	NS (ft)	EW (ft)	DLS (°/100ft)	Build (°/100ft)	Turn (°/100ft)
	6/24/2011	3,597.00	3,573.29	13.92	322.50	243.11	195.56	-145.32	0.73	0.61	-1.68
	6/24/2011	3,687.00	3,660.62	14.07	325.74	264.83	213.19	-158.07	0.89	0.17	3.60
	6/24/2011	3,778.00	3,748.74	14.86	334.21	287.48	232.84	-169.37	2.48	0.87	9.31
	6/24/2011	3,868.00	3,835.84	14.33	338.34	309.86	253.58	-178.51	1.30	-0.59	4.59
	6/25/2011	3,958.00	3,923.09	14.07	334.65	331.63	273.82	-187.30	1.05	-0.29	-4.10
	6/25/2011	4,048.00	4,010.43	13.95	326.27	353.33	292.73	-198.01	2.26	-0.13	-9.31
	6/25/2011	4,138.00	4,097.21	16.76	321.49	377.09	311.91	-212.12	3.42	3.12	-5.31
	6/25/2011	4,228.00	4,183.52	16.17	322.36	402.49	331.99	-227.85	0.71	-0.66	0.97
	6/25/2011	4,318.00	4,270.10	15.50	323.32	426.98	351.56	-242.69	0.80	-0.74	1.07
	6/25/2011	4,408.00	4,356.85	15.42	319.63	450.84	370.32	-257.62	1.10	-0.09	-4.10
	6/25/2011	4,498.00	4,443.85	14.25	318.83	473.66	387.77	-272.66	1.32	-1.30	-0.89
	6/25/2011	4,588.00	4,530.92	15.06	320.81	496.24	405.18	-287.34	1.06	0.90	2.20
	6/25/2011	4,678.00	4,618.19	13.21	322.50	518.12	422.40	-300.99	2.11	-2.06	1.88
	6/25/2011	4,768.00	4,705.55	14.62	317.92	539.58	438.99	-314.87	1.99	1.57	-5.09
	6/25/2011	4,859.00	4,793.50	15.12	317.51	562.61	456.26	-330.58	0.56	0.55	-0.45
	6/25/2011	4,949.00	4,880.98	12.03	321.89	583.53	472.30	-344.30	3.62	-3.43	4.87
	6/25/2011	5,039.00	4,968.83	13.09	315.66	602.86	486.97	-357.21	1.91	1.18	-6.92
	6/25/2011	5,129.00	5,055.93	16.04	313.75	624.94	502.86	-373.32	3.32	3.28	-2.12
	6/25/2011	5,219.00	5,142.34	16.42	316.87	649.55	520.75	-391.00	1.06	0.42	3.47
	6/25/2011	5,309.00	5,228.52	17.12	320.75	675.23	540.29	-408.08	1.47	0.78	4.31
	6/25/2011	5,400.00	5,315.62	16.55	327.09	701.51	561.54	-423.60	2.11	-0.63	6.97
	6/25/2011	5,490.00	5,401.89	16.56	329.55	727.14	583.36	-437.06	0.78	0.01	2.73
	6/26/2011	5,580.00	5,488.15	16.60	331.17	752.78	605.68	-449.76	0.52	0.04	1.80
	6/26/2011	5,670.00	5,574.42	16.53	328.23	778.41	627.83	-462.70	0.93	-0.08	-3.27
	6/26/2011	5,760.00	5,660.57	17.08	327.69	804.42	649.88	-476.51	0.64	0.61	-0.60
	6/26/2011	5,850.00	5,746.55	17.33	327.83	831.04	672.40	-490.71	0.28	0.28	0.16
	6/26/2011	5,940.00	5,832.68	16.36	328.30	857.12	694.53	-504.51	1.09	-1.08	0.52
	6/26/2011	6,031.00	5,920.28	15.10	334.91	881.68	716.17	-516.27	2.41	-1.38	7.26
	6/26/2011	6,121.00	6,007.54	13.26	338.84	903.41	736.42	-524.97	2.31	-2.04	4.37
	6/26/2011	6,211.00	6,095.24	12.69	337.42	923.24	755.17	-532.49	0.73	-0.63	-1.58
	6/26/2011	6,301.00	6,183.32	11.02	341.70	941.30	772.47	-538.98	2.10	-1.86	4.76
	6/27/2011	6,391.00	6,271.77	10.29	344.84	957.29	788.39	-543.79	1.04	-0.81	3.49
	6/27/2011	6,481.00	6,360.62	8.11	359.02	970.34	802.50	-546.00	3.48	-2.42	15.76
	6/27/2011	6,571.00	6,449.72	8.27	18.92	979.74	814.98	-544.01	3.14	0.18	-377.89
	6/27/2011	6,630.00	6,508.05	8.95	31.16	984.38	822.92	-540.26	3.31	1.15	20.75
	6/27/2011	6,686.00	6,563.37	8.95	31.16	988.20	830.37	-535.75	0.00	0.00	0.00