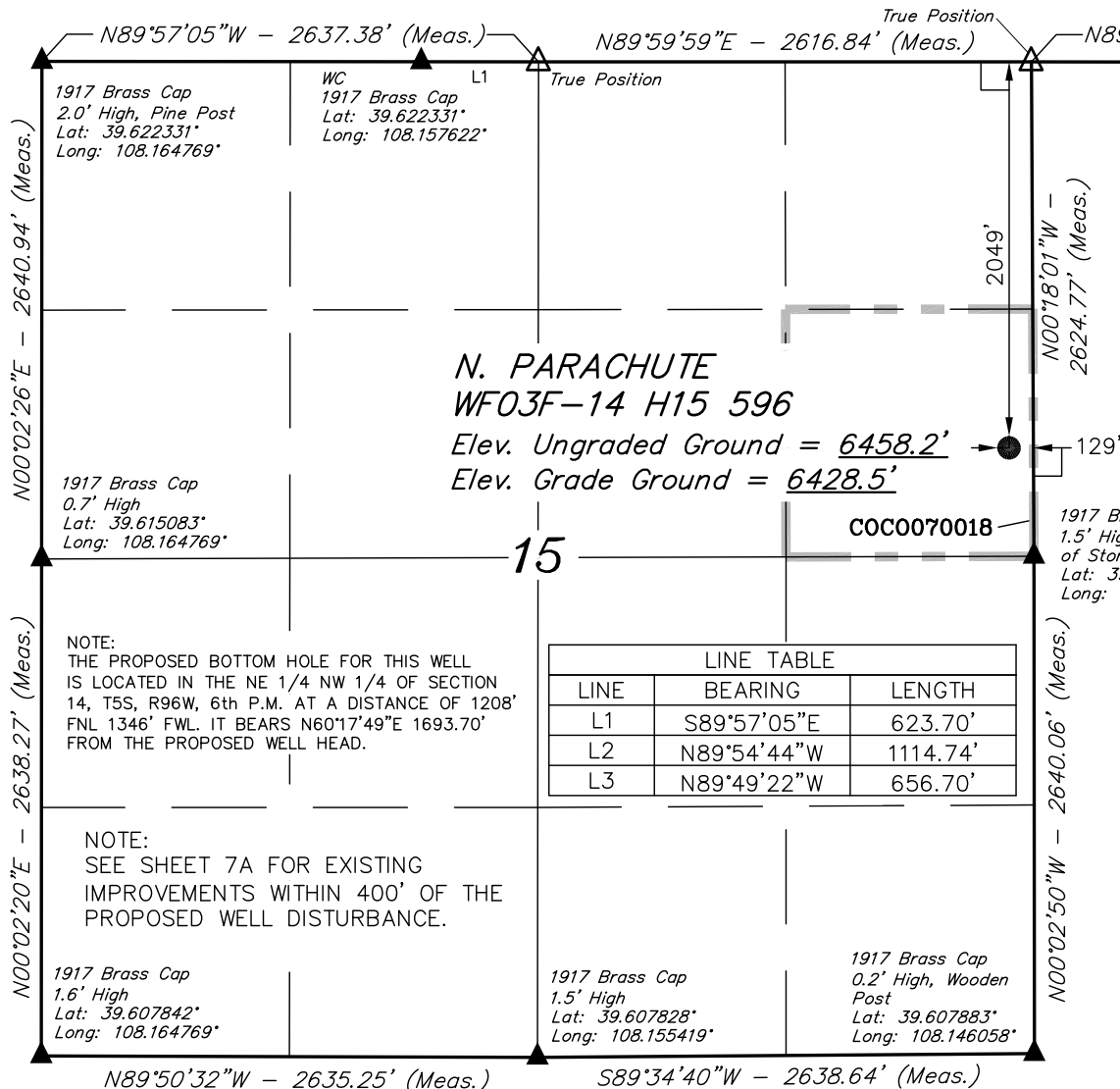


T5S, R96W, 6th P.M.

Encana OIL & GAS (USA) INC.

Well location, N. PARACHUTE WF03F-14 H15 596 (SURFACE LOCATION), located as shown in the SE 1/4 NE 1/4 of Section 15, T5S, R96W, 6th P.M., Garfield County, Colorado.



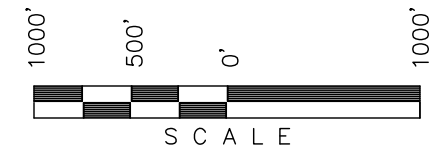
BASIS OF ELEVATION

SPOT ELEVATION AT THE NORTHWEST CORNER OF SECTION 30, T5S, R95W, 6th P.M. TAKEN FROM THE FORKED GULCH QUADRANGLE, COLORADO, GARFIELD COUNTY, 7.5 MINUTE SERIES (TOPOGRAPHICAL MAP) PUBLISHED BY THE UNITED STATES DEPARTMENT OF THE INTERIOR, GEOLOGICAL SURVEY. SAID ELEVATION IS MARKED AS BEING 5966 FEET.

BASIS OF BEARINGS

BASIS OF BEARINGS IS A G.P.S. OBSERVATION.

Sheet 1c of 11



CERTIFICATE

THIS IS TO CERTIFY THAT THE ABOVE PLAT WAS PREPARED FROM FIELD NOTES OF ACTUAL SURVEYS MADE BY ME OR UNDER MY SUPERVISION AND THAT THE SAME ARE TRUE AND CORRECT TO THE BEST OF MY KNOWLEDGE AND BELIEF.

REGISTERED LAND SURVEYOR
REGISTRATION NO. 17492
STATE OF COLORADO
06-22-2011

Revised: 09-29-11 D.R.B.

UINTAH ENGINEERING & LAND SURVEYING 85 SOUTH 200 EAST - VERNAL, UTAH 84078 (435) 789-1017			
SCALE 1" = 1000'	DATE SURVEYED: 11-22-10	DATE DRAWN: 06-15-11	
PARTY G.O. T.M. D.R.B.	REFERENCES G.L.O. PLAT		
WEATHER COOL	FILE	Encana OIL & GAS (USA) INC.	

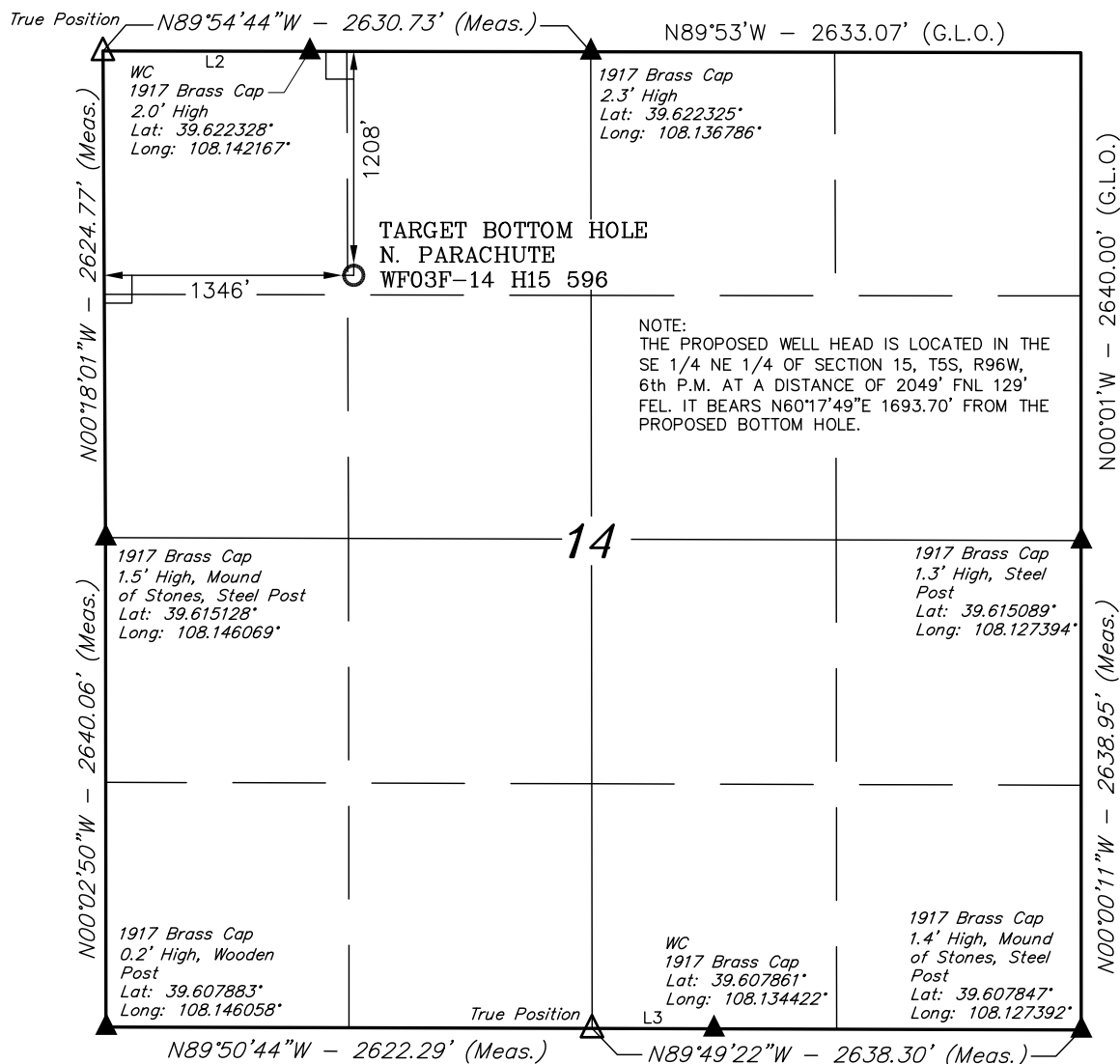
LEGEND:

- └─┘ = 90° SYMBOL
- = PROPOSED WELL HEAD.
- ▲ = SECTION CORNERS LOCATED.
- △ = SECTION CORNERS RE-EST. (Not Set on Ground)

PDOP = 2.6

NAD 83 (SURFACE LOCATION)	
LATITUDE = 39°37'00.15" (39.616708)	
LONGITUDE = 108°08'47.54" (108.146539)	
NAD 27 (SURFACE LOCATION)	
LATITUDE = 39°37'00.24" (39.616733)	
LONGITUDE = 108°08'45.25" (108.145903)	

T5S, R96W, 6th P.M.



LEGEND:

└─┘ = 90° SYMBOL

● = PROPOSED WELL HEAD.

▲ = SECTION CORNERS LOCATED.

△ = SECTION CORNERS RE-EST.
(Not Set on Ground)

NAD 83 (TARGET BOTTOM HOLE)	
LATITUDE	= 39°37'08.45" (39.619014)
LONGITUDE	= 108°08'28.75" (108.141319)
NAD 27 (TARGET BOTTOM HOLE)	
LATITUDE	= 39°37'08.54" (39.619039)
LONGITUDE	= 108°08'26.46" (108.140683)

Encana OIL & GAS (USA) INC.

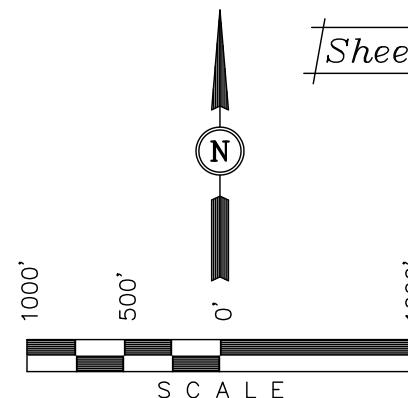
Well location, N. PARACHUTE WF03F-14 H15 596 (TARGET BOTTOM HOLE), located as shown in the NE 1/4 NW 1/4 of Section 14, T5S, R96W, 6th P.M., Garfield County, Colorado.

BASIS OF ELEVATION

SPOT ELEVATION AT THE NORTHWEST CORNER OF SECTION 30, T5S, R95W, 6th P.M. TAKEN FROM THE FORKED GULCH QUADRANGLE, COLORADO, GARFIELD COUNTY, 7.5 MINUTE SERIES (TOPOGRAPHICAL MAP) PUBLISHED BY THE UNITED STATES DEPARTMENT OF THE INTERIOR, GEOLOGICAL SURVEY. SAID ELEVATION IS MARKED AS BEING 5966 FEET.

BASIS OF BEARINGS

BASIS OF BEARINGS IS A G.P.S. OBSERVATION.



Sheet 1d of 11

CERTIFICATE

THIS IS TO CERTIFY THAT THE ABOVE PLAT WAS PREPARED FROM FIELD NOTES OF ACTUAL SURVEYS MADE BY ME OR UNDER MY SUPERVISION AND THAT THE SAME ARE TRUE AND CORRECT TO THE BEST OF MY KNOWLEDGE AND BELIEF.

REGISTERED LAND SURVEYOR
REGISTRATION NO. 17492
STATE OF COLORADO

Revised: 06-29-11 D.R.B.

UINTAH ENGINEERING & LAND SURVEYING
85 SOUTH 200 EAST — VERNAL, UTAH 84078
(435) 789-1017

SCALE 1" = 1000'	DATE SURVEYED: 11-22-10	DATE DRAWN: 06-15-11
PARTY G.O. T.M. D.R.B.	REFERENCES G.L.O. PLAT	
WEATHER COOL	FILE Encana OIL & GAS (USA) INC.	