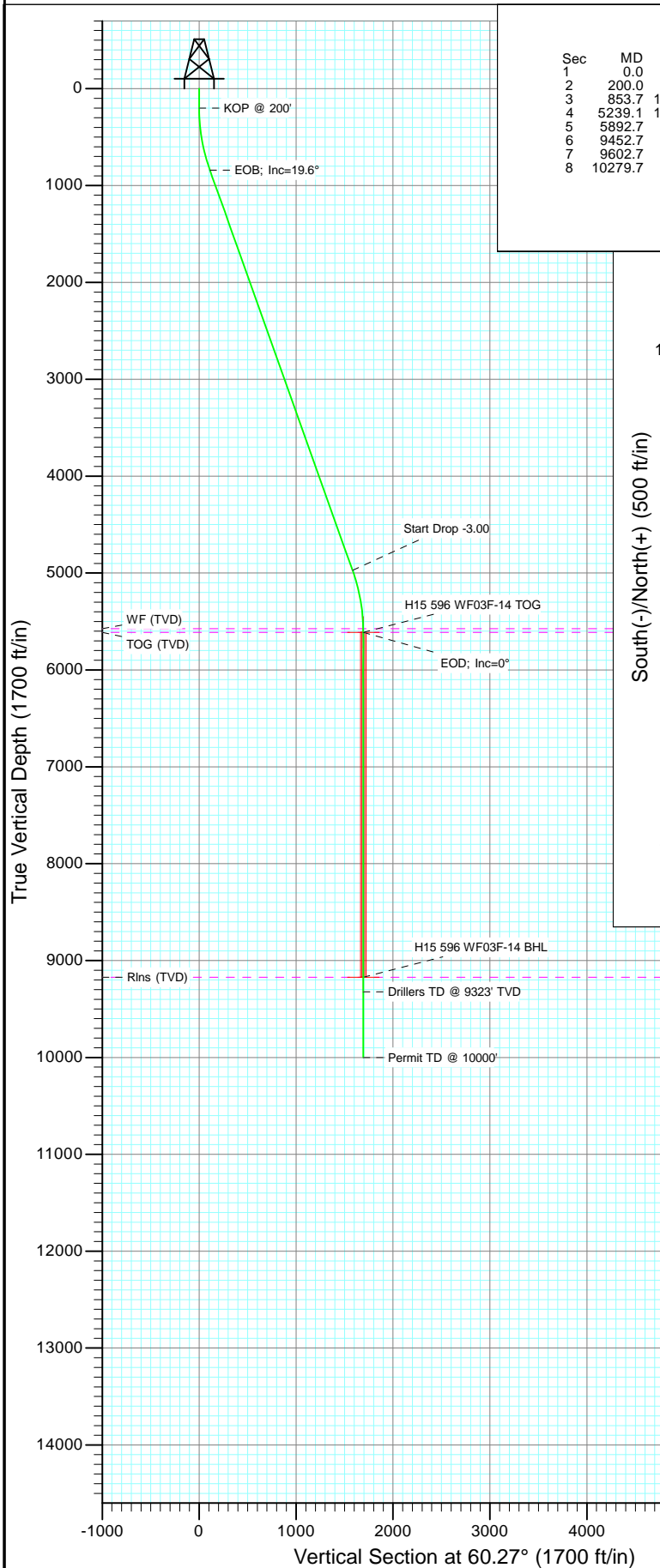
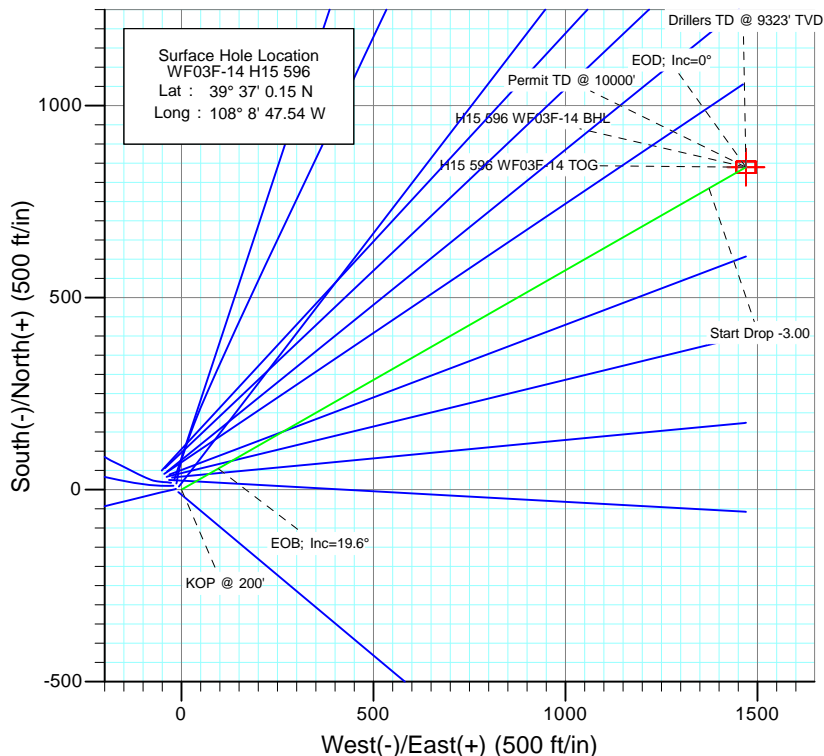




Project: North Piceance  
 Site: H15 596 (S15-T5S-96W)  
 Well: WF03F-14 H15 596  
 Wellbore: DD  
 Design: Plan #1



SECTION DETAILS										
Sec	MD	Inc	Azi	TVD	+N/-S	+E/-W	Dleg	TFace	VSec	Target
1	0.0	0.00	0.00	0.0	0.0	0.0	0.00	0.00	0.0	
2	200.0	0.00	0.00	200.0	0.0	0.0	0.00	0.00	0.0	
3	853.7	19.61	60.27	841.0	54.9	96.2	3.00	60.27	110.8	
4	5239.1	19.61	60.27	4972.0	784.9	1374.2	0.00	0.00	1582.5	
5	5892.7	0.00	0.00	5613.0	839.9	1470.4	3.00	180.00	1693.3	H15 596 WF03F-14 TOG
6	9452.7	0.00	0.00	9173.0	839.9	1470.4	0.00	0.00	1693.3	H15 596 WF03F-14 BHL
7	9602.7	0.00	0.00	9323.0	839.9	1470.4	0.00	0.00	1693.3	
8	10279.7	0.00	0.00	10000.0	839.9	1470.4	0.00	0.00	1693.3	



Azimuths to True North  
 Magnetic North: 10.44°

Magnetic Field  
 Strength: 52294.5nT  
 Dip Angle: 65.81°  
 Date: 6/7/2011  
 Model: IGRF2010

#### FORMATION TOP DETAILS

TVDPath	MDPath	Formation
5573.0	5852.7	WF (TVD)
5613.0	5892.7	TOG (TVD)
9173.0	9452.7	Rins (TVD)

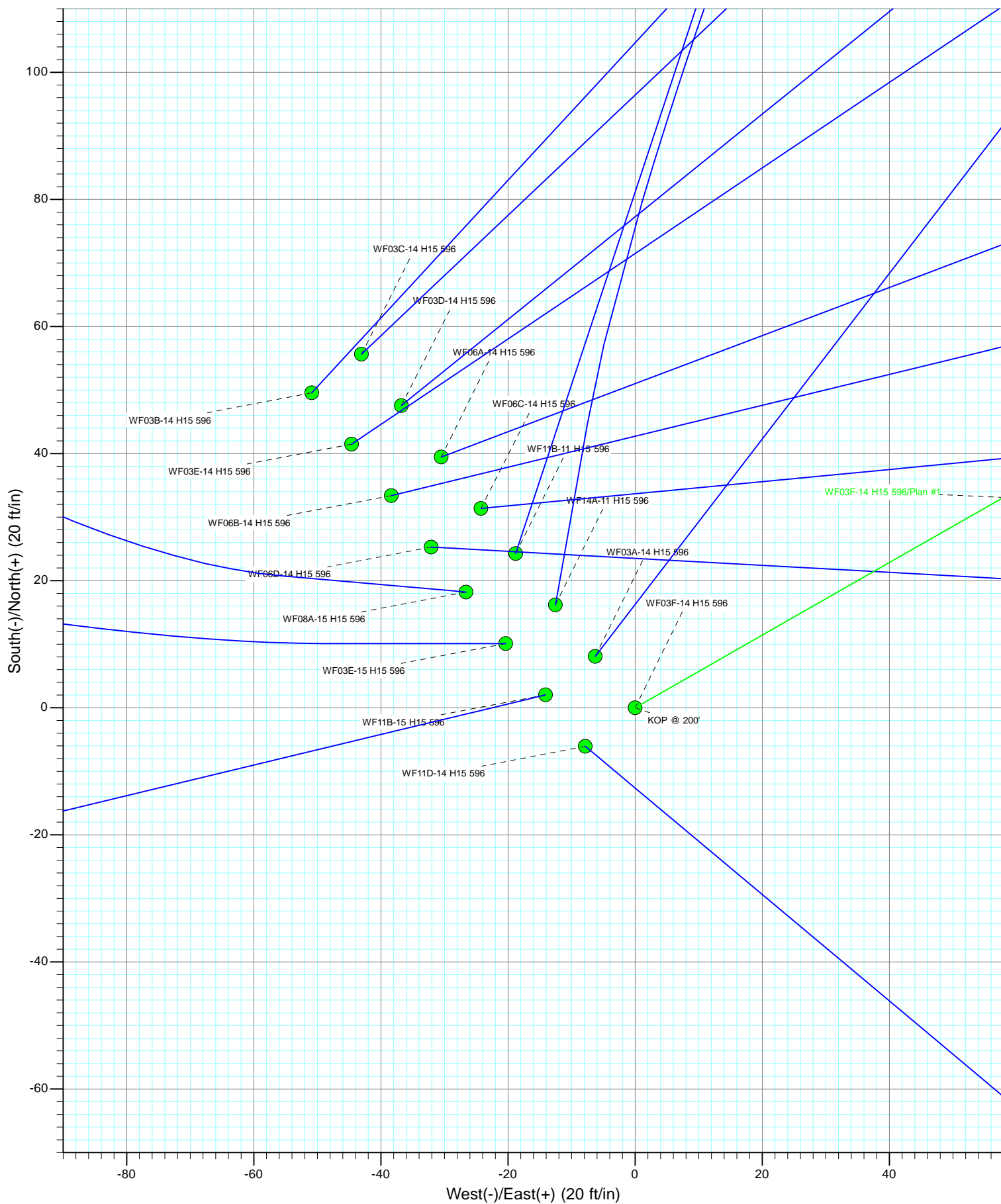
Plan #1  
 WF03F-14 H15 596  
 115xxx; LR

KBE @ 6453.0ft (Original Well Elev)  
 North American Datum 1983  
 Well WF03F-14 H15 596, True North

Type	Target	Azimuth	Origin	Type	N/S	E/W	From
Target	H15 596 WF03F-14 BHL	60.27	Slot		0.0	0.0	TVD
							0.0
Name	TVD	+N/-S	+E/-W	Latitude	Longitude		
H15 596 WF03F-14 TOG	5613.0	839.9	1470.4	39° 37' 8.45 N	108° 8' 28.75 W		
H15 596 WF03F-14 BHL	9173.0	839.9	1470.4	39° 37' 8.45 N	108° 8' 28.75 W		

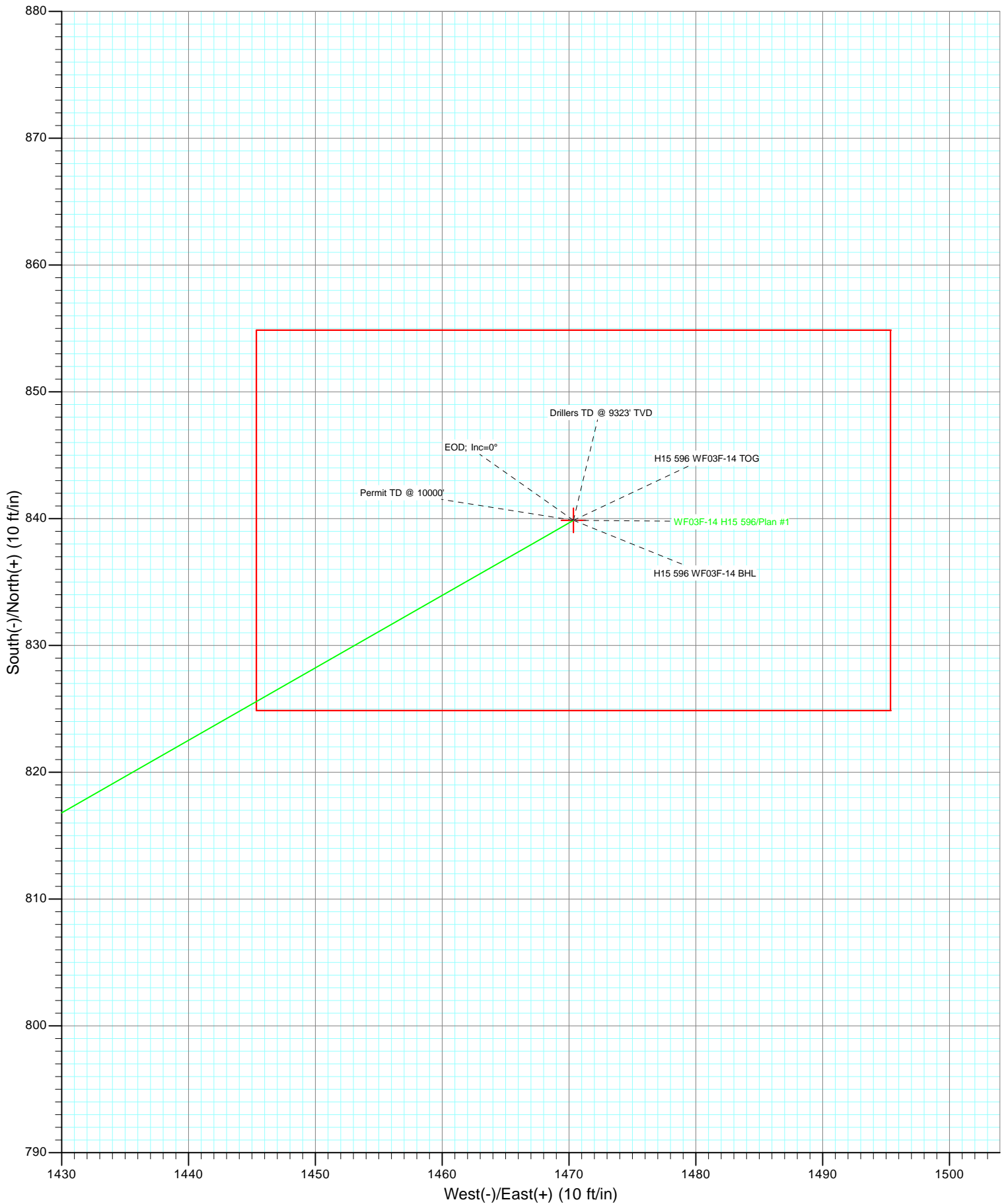


Project: North Piceance  
Site: H15 596 (S15-T5S-96W)  
Well: WF03F-14 H15 596  
Wellbore: DD  
Design: Plan #1





Project: North Piceance  
Site: H15 596 (S15-T5S-96W)  
Well: WF03F-14 H15 596  
Wellbore: DD  
Design: Plan #1



## Planning Report

<b>Database:</b>	EDM 5000.1 US Multi Users DB	<b>Local Co-ordinate Reference:</b>	Well WF03F-14 H15 596
<b>Company:</b>	EnCana Oil & Gas (USA) Inc	<b>TVD Reference:</b>	KBE @ 6453.0ft (Original Well Elev)
<b>Project:</b>	North Piceance	<b>MD Reference:</b>	KBE @ 6453.0ft (Original Well Elev)
<b>Site:</b>	H15 596 (S15-T5S-96W)	<b>North Reference:</b>	True
<b>Well:</b>	WF03F-14 H15 596	<b>Survey Calculation Method:</b>	Minimum Curvature
<b>Wellbore:</b>	DD		
<b>Design:</b>	Plan #1		

<b>Project</b>	North Piceance		
<b>Map System:</b>	US State Plane 1983	<b>System Datum:</b>	Mean Sea Level
<b>Geo Datum:</b>	North American Datum 1983		
<b>Map Zone:</b>	Colorado Central Zone		

Site		H15 596 (S15-T5S-96W)			
Site Position:		Northing:	1,660,371.18 ft	Latitude:	39° 37' 0.09 N
From:	Lat/Long	Easting:	2,254,528.31 ft	Longitude:	108° 8' 47.64 W
Position Uncertainty:	0.0 ft	Slot Radius:	13.200 in	Grid Convergence:	-1.67 °

Well	WF03F-14 H15 596					
Well Position	+N-S	0.0 ft	Northing:	1,660,377.00 ft	Latitude:	39° 37' 0.15 N
	+E-W	0.0 ft	Easting:	2,254,536.31 ft	Longitude:	108° 8' 47.54 W
Position Uncertainty		0.0 ft	Wellhead Elevation:	ft	Ground Level:	6,431.0 ft

<b>Wellbore</b>	DD				
<b>Magnetics</b>	<b>Model Name</b>	<b>Sample Date</b>	<b>Declination (°)</b>	<b>Dip Angle (°)</b>	<b>Field Strength (nT)</b>
	IGRF2010	6/7/2011	10.44	65.81	52,295

<b>Design</b>	Plan #1			
<b>Audit Notes:</b>				
<b>Version:</b>	<b>Phase:</b>	PLAN	<b>Tie On Depth:</b>	0.0
<b>Vertical Section:</b>	<b>Depth From (TVD) (ft)</b>	<b>+N/-S (ft)</b>	<b>+E/-W (ft)</b>	<b>Direction (°)</b>
	0.0	0.0	0.0	60.27

<b>Plan Sections</b>										
Measured Depth (ft)	Inclination (°)	Azimuth (°)	Vertical Depth (ft)	+N/-S (ft)	+E/-W (ft)	Dogleg Rate (°/100ft)	Build Rate (°/100ft)	Turn Rate (°/100ft)	TFO (°)	Target
0.0	0.00	0.00	0.0	0.0	0.0	0.00	0.00	0.00	0.00	
200.0	0.00	0.00	200.0	0.0	0.0	0.00	0.00	0.00	0.00	
853.7	19.61	60.27	841.0	54.9	96.2	3.00	3.00	0.00	60.27	
5,239.1	19.61	60.27	4,972.0	784.9	1,374.2	0.00	0.00	0.00	0.00	
5,892.7	0.00	0.00	5,613.0	839.9	1,470.4	3.00	-3.00	0.00	180.00	H15 596 WF03F-14 T
9,452.7	0.00	0.00	9,173.0	839.9	1,470.4	0.00	0.00	0.00	0.00	H15 596 WF03F-14 B
9,602.7	0.00	0.00	9,323.0	839.9	1,470.4	0.00	0.00	0.00	0.00	
10,279.7	0.00	0.00	10,000.0	839.9	1,470.4	0.00	0.00	0.00	0.00	

# Planning Report

<b>Database:</b>	EDM 5000.1 US Multi Users DB	<b>Local Co-ordinate Reference:</b>	Well WF03F-14 H15 596
<b>Company:</b>	EnCana Oil & Gas (USA) Inc	<b>TVD Reference:</b>	KBE @ 6453.0ft (Original Well Elev)
<b>Project:</b>	North Piceance	<b>MD Reference:</b>	KBE @ 6453.0ft (Original Well Elev)
<b>Site:</b>	H15 596 (S15-T5S-96W)	<b>North Reference:</b>	True
<b>Well:</b>	WF03F-14 H15 596	<b>Survey Calculation Method:</b>	Minimum Curvature
<b>Wellbore:</b>	DD		
<b>Design:</b>	Plan #1		

## Planned Survey

Measured Depth (ft)	Inclination (°)	Azimuth (°)	Vertical Depth (ft)	+N/-S (ft)	+E/-W (ft)	Vertical Section (ft)	Dogleg Rate (°/100ft)	Build Rate (°/100ft)	Comments / Formations
0.0	0.00	0.00	0.0	0.0	0.0	0.0	0.00	0.00	
30.0	0.00	0.00	30.0	0.0	0.0	0.0	0.00	0.00	
60.0	0.00	0.00	60.0	0.0	0.0	0.0	0.00	0.00	
90.0	0.00	0.00	90.0	0.0	0.0	0.0	0.00	0.00	
120.0	0.00	0.00	120.0	0.0	0.0	0.0	0.00	0.00	
150.0	0.00	0.00	150.0	0.0	0.0	0.0	0.00	0.00	
180.0	0.00	0.00	180.0	0.0	0.0	0.0	0.00	0.00	
200.0	0.00	0.00	200.0	0.0	0.0	0.0	0.00	0.00	KOP @ 200'
210.0	0.30	60.27	210.0	0.0	0.0	0.0	3.00	3.00	
240.0	1.20	60.27	240.0	0.2	0.4	0.4	3.00	3.00	
270.0	2.10	60.27	270.0	0.6	1.1	1.3	3.00	3.00	
300.0	3.00	60.27	300.0	1.3	2.3	2.6	3.00	3.00	
330.0	3.90	60.27	329.9	2.2	3.8	4.4	3.00	3.00	
360.0	4.80	60.27	359.8	3.3	5.8	6.7	3.00	3.00	
390.0	5.70	60.27	389.7	4.7	8.2	9.4	3.00	3.00	
420.0	6.60	60.27	419.5	6.3	11.0	12.7	3.00	3.00	
450.0	7.50	60.27	449.3	8.1	14.2	16.3	3.00	3.00	
480.0	8.40	60.27	479.0	10.2	17.8	20.5	3.00	3.00	
510.0	9.30	60.27	508.6	12.5	21.8	25.1	3.00	3.00	
540.0	10.20	60.27	538.2	15.0	26.2	30.2	3.00	3.00	
570.0	11.10	60.27	567.7	17.7	31.0	35.7	3.00	3.00	
600.0	12.00	60.27	597.1	20.7	36.2	41.7	3.00	3.00	
630.0	12.90	60.27	626.4	23.9	41.9	48.2	3.00	3.00	
660.0	13.80	60.27	655.6	27.3	47.9	55.1	3.00	3.00	
690.0	14.70	60.27	684.6	31.0	54.3	62.5	3.00	3.00	
720.0	15.60	60.27	713.6	34.9	61.1	70.4	3.00	3.00	
750.0	16.50	60.27	742.4	39.0	68.3	78.6	3.00	3.00	
780.0	17.40	60.27	771.1	43.3	75.9	87.4	3.00	3.00	
810.0	18.30	60.27	799.7	47.9	83.9	96.6	3.00	3.00	
840.0	19.20	60.27	828.1	52.7	92.2	106.2	3.00	3.00	
853.7	19.61	60.27	841.0	54.9	96.2	110.8	3.00	3.00	EOB; Inc=19.6°
870.0	19.61	60.27	856.4	57.7	100.9	116.3	0.00	0.00	
900.0	19.61	60.27	884.6	62.7	109.7	126.3	0.00	0.00	
930.0	19.61	60.27	912.9	67.6	118.4	136.4	0.00	0.00	
960.0	19.61	60.27	941.1	72.6	127.2	146.5	0.00	0.00	
990.0	19.61	60.27	969.4	77.6	135.9	156.5	0.00	0.00	
1,020.0	19.61	60.27	997.7	82.6	144.7	166.6	0.00	0.00	
1,050.0	19.61	60.27	1,025.9	87.6	153.4	176.7	0.00	0.00	
1,080.0	19.61	60.27	1,054.2	92.6	162.1	186.7	0.00	0.00	
1,110.0	19.61	60.27	1,082.4	97.6	170.9	196.8	0.00	0.00	
1,140.0	19.61	60.27	1,110.7	102.6	179.6	206.9	0.00	0.00	
1,170.0	19.61	60.27	1,139.0	107.6	188.4	216.9	0.00	0.00	
1,200.0	19.61	60.27	1,167.2	112.6	197.1	227.0	0.00	0.00	
1,230.0	19.61	60.27	1,195.5	117.6	205.9	237.1	0.00	0.00	
1,260.0	19.61	60.27	1,223.7	122.6	214.6	247.1	0.00	0.00	
1,290.0	19.61	60.27	1,252.0	127.6	223.3	257.2	0.00	0.00	
1,320.0	19.61	60.27	1,280.3	132.6	232.1	267.3	0.00	0.00	
1,350.0	19.61	60.27	1,308.5	137.6	240.8	277.3	0.00	0.00	
1,380.0	19.61	60.27	1,336.8	142.6	249.6	287.4	0.00	0.00	
1,410.0	19.61	60.27	1,365.0	147.5	258.3	297.5	0.00	0.00	
1,440.0	19.61	60.27	1,393.3	152.5	267.1	307.6	0.00	0.00	
1,470.0	19.61	60.27	1,421.6	157.5	275.8	317.6	0.00	0.00	

## Planning Report

<b>Database:</b>	EDM 5000.1 US Multi Users DB	<b>Local Co-ordinate Reference:</b>	Well WF03F-14 H15 596
<b>Company:</b>	EnCana Oil & Gas (USA) Inc	<b>TVD Reference:</b>	KBE @ 6453.0ft (Original Well Elev)
<b>Project:</b>	North Piceance	<b>MD Reference:</b>	KBE @ 6453.0ft (Original Well Elev)
<b>Site:</b>	H15 596 (S15-T5S-96W)	<b>North Reference:</b>	True
<b>Well:</b>	WF03F-14 H15 596	<b>Survey Calculation Method:</b>	Minimum Curvature
<b>Wellbore:</b>	DD		
<b>Design:</b>	Plan #1		

### Planned Survey

Measured Depth (ft)	Inclination (°)	Azimuth (°)	Vertical Depth (ft)	+N/-S (ft)	+E/-W (ft)	Vertical Section (ft)	Dogleg Rate (°/100ft)	Build Rate (°/100ft)	Comments / Formations
1,500.0	19.61	60.27	1,449.8	162.5	284.5	327.7	0.00	0.00	
1,530.0	19.61	60.27	1,478.1	167.5	293.3	337.8	0.00	0.00	
1,560.0	19.61	60.27	1,506.3	172.5	302.0	347.8	0.00	0.00	
1,590.0	19.61	60.27	1,534.6	177.5	310.8	357.9	0.00	0.00	
1,620.0	19.61	60.27	1,562.9	182.5	319.5	368.0	0.00	0.00	
1,650.0	19.61	60.27	1,591.1	187.5	328.3	378.0	0.00	0.00	
1,680.0	19.61	60.27	1,619.4	192.5	337.0	388.1	0.00	0.00	
1,710.0	19.61	60.27	1,647.6	197.5	345.7	398.2	0.00	0.00	
1,740.0	19.61	60.27	1,675.9	202.5	354.5	408.2	0.00	0.00	
1,770.0	19.61	60.27	1,704.2	207.5	363.2	418.3	0.00	0.00	
1,800.0	19.61	60.27	1,732.4	212.5	372.0	428.4	0.00	0.00	
1,830.0	19.61	60.27	1,760.7	217.5	380.7	438.4	0.00	0.00	
1,860.0	19.61	60.27	1,788.9	222.5	389.5	448.5	0.00	0.00	
1,890.0	19.61	60.27	1,817.2	227.4	398.2	458.6	0.00	0.00	
1,920.0	19.61	60.27	1,845.5	232.4	406.9	468.6	0.00	0.00	
1,950.0	19.61	60.27	1,873.7	237.4	415.7	478.7	0.00	0.00	
1,980.0	19.61	60.27	1,902.0	242.4	424.4	488.8	0.00	0.00	
2,010.0	19.61	60.27	1,930.2	247.4	433.2	498.8	0.00	0.00	
2,040.0	19.61	60.27	1,958.5	252.4	441.9	508.9	0.00	0.00	
2,070.0	19.61	60.27	1,986.8	257.4	450.7	519.0	0.00	0.00	
2,100.0	19.61	60.27	2,015.0	262.4	459.4	529.1	0.00	0.00	
2,130.0	19.61	60.27	2,043.3	267.4	468.1	539.1	0.00	0.00	
2,160.0	19.61	60.27	2,071.5	272.4	476.9	549.2	0.00	0.00	
2,190.0	19.61	60.27	2,099.8	277.4	485.6	559.3	0.00	0.00	
2,220.0	19.61	60.27	2,128.1	282.4	494.4	569.3	0.00	0.00	
2,250.0	19.61	60.27	2,156.3	287.4	503.1	579.4	0.00	0.00	
2,280.0	19.61	60.27	2,184.6	292.4	511.8	589.5	0.00	0.00	
2,310.0	19.61	60.27	2,212.8	297.4	520.6	599.5	0.00	0.00	
2,340.0	19.61	60.27	2,241.1	302.4	529.3	609.6	0.00	0.00	
2,370.0	19.61	60.27	2,269.4	307.3	538.1	619.7	0.00	0.00	
2,400.0	19.61	60.27	2,297.6	312.3	546.8	629.7	0.00	0.00	
2,430.0	19.61	60.27	2,325.9	317.3	555.6	639.8	0.00	0.00	
2,460.0	19.61	60.27	2,354.1	322.3	564.3	649.9	0.00	0.00	
2,490.0	19.61	60.27	2,382.4	327.3	573.0	659.9	0.00	0.00	

### Targets

Target Name	Dip Angle (°)	Dip Dir. (°)	TVD (ft)	+N/-S (ft)	+E/-W (ft)	Northing (ft)	Easting (ft)	Latitude	Longitude
- hit/miss target									
- Shape									
H15 596 WF03F-14 TOC	0.00	0.00	5,613.0	839.9	1,470.4	1,661,173.68	2,256,030.51	39° 37' 8.45 N	108° 8' 28.75 W
- plan misses target center by 3391.8ft at 2490.0ft MD (2382.4 TVD, 327.3 N, 573.0 E)									
- Point									
H15 596 WF03F-14 BHL	0.00	0.00	9,173.0	839.9	1,470.4	1,661,173.68	2,256,030.51	39° 37' 8.45 N	108° 8' 28.75 W
- plan misses target center by 6868.8ft at 2490.0ft MD (2382.4 TVD, 327.3 N, 573.0 E)									
- Rectangle (sides W30.0 H50.0 D0.0)									

# Planning Report

<b>Database:</b>	EDM 5000.1 US Multi Users DB	<b>Local Co-ordinate Reference:</b>	Well WF03F-14 H15 596
<b>Company:</b>	EnCana Oil & Gas (USA) Inc	<b>TVD Reference:</b>	KBE @ 6453.0ft (Original Well Elev)
<b>Project:</b>	North Piceance	<b>MD Reference:</b>	KBE @ 6453.0ft (Original Well Elev)
<b>Site:</b>	H15 596 (S15-T5S-96W)	<b>North Reference:</b>	True
<b>Well:</b>	WF03F-14 H15 596	<b>Survey Calculation Method:</b>	Minimum Curvature
<b>Wellbore:</b>	DD		
<b>Design:</b>	Plan #1		

Planned Survey									
Measured Depth (ft)	Inclination (°)	Azimuth (°)	Vertical Depth (ft)	+N/-S (ft)	+E/-W (ft)	Vertical Section (ft)	Dogleg Rate (°/100ft)	Build Rate (°/100ft)	Comments / Formations
2,500.0	19.61	60.27	2,391.8	329.0	576.0	663.3	0.00	0.00	
2,600.0	19.61	60.27	2,486.0	345.6	605.1	696.9	0.00	0.00	
2,700.0	19.61	60.27	2,580.2	362.3	634.2	730.4	0.00	0.00	
2,800.0	19.61	60.27	2,674.4	378.9	663.4	764.0	0.00	0.00	
2,900.0	19.61	60.27	2,768.6	395.6	692.5	797.5	0.00	0.00	
3,000.0	19.61	60.27	2,862.8	412.2	721.7	831.1	0.00	0.00	
3,100.0	19.61	60.27	2,957.0	428.9	750.8	864.7	0.00	0.00	
3,200.0	19.61	60.27	3,051.2	445.5	780.0	898.2	0.00	0.00	
3,300.0	19.61	60.27	3,145.4	462.2	809.1	931.8	0.00	0.00	
3,400.0	19.61	60.27	3,239.6	478.8	838.2	965.3	0.00	0.00	
3,500.0	19.61	60.27	3,333.8	495.4	867.4	998.9	0.00	0.00	
3,600.0	19.61	60.27	3,428.0	512.1	896.5	1,032.5	0.00	0.00	
3,700.0	19.61	60.27	3,522.2	528.7	925.7	1,066.0	0.00	0.00	
3,800.0	19.61	60.27	3,616.4	545.4	954.8	1,099.6	0.00	0.00	
3,900.0	19.61	60.27	3,710.6	562.0	983.9	1,133.1	0.00	0.00	
4,000.0	19.61	60.27	3,804.8	578.7	1,013.1	1,166.7	0.00	0.00	
4,100.0	19.61	60.27	3,899.0	595.3	1,042.2	1,200.3	0.00	0.00	
4,200.0	19.61	60.27	3,993.2	612.0	1,071.4	1,233.8	0.00	0.00	
4,300.0	19.61	60.27	4,087.4	628.6	1,100.5	1,267.4	0.00	0.00	
4,400.0	19.61	60.27	4,181.6	645.3	1,129.7	1,301.0	0.00	0.00	
4,500.0	19.61	60.27	4,275.8	661.9	1,158.8	1,334.5	0.00	0.00	
4,600.0	19.61	60.27	4,370.0	678.5	1,187.9	1,368.1	0.00	0.00	
4,700.0	19.61	60.27	4,464.2	695.2	1,217.1	1,401.6	0.00	0.00	
4,800.0	19.61	60.27	4,558.4	711.8	1,246.2	1,435.2	0.00	0.00	
4,900.0	19.61	60.27	4,652.6	728.5	1,275.4	1,468.8	0.00	0.00	
5,000.0	19.61	60.27	4,746.8	745.1	1,304.5	1,502.3	0.00	0.00	
5,100.0	19.61	60.27	4,841.0	761.8	1,333.6	1,535.9	0.00	0.00	
5,200.0	19.61	60.27	4,935.2	778.4	1,362.8	1,569.4	0.00	0.00	
5,239.1	19.61	60.27	4,972.0	784.9	1,374.2	1,582.5	0.00	0.00	Start Drop -3.00
5,300.0	17.78	60.27	5,029.7	794.6	1,391.1	1,602.1	3.00	-3.00	
5,400.0	14.78	60.27	5,125.7	808.5	1,415.5	1,630.1	3.00	-3.00	
5,500.0	11.78	60.27	5,223.0	819.9	1,435.4	1,653.1	3.00	-3.00	
5,600.0	8.78	60.27	5,321.4	828.8	1,450.9	1,670.9	3.00	-3.00	
5,700.0	5.78	60.27	5,420.6	835.0	1,461.9	1,683.6	3.00	-3.00	
5,800.0	2.78	60.27	5,520.3	838.7	1,468.4	1,691.1	3.00	-3.00	
5,852.7	1.20	60.27	5,573.0	839.7	1,470.0	1,692.9	3.00	-3.00	WF (TVD)
5,892.7	0.00	0.00	5,613.0	839.9	1,470.4	1,693.3	3.00	-3.00	EOD; Inc=0° - TOG (TVD) - H15 596 WF03F-14
5,900.0	0.00	0.00	5,620.3	839.9	1,470.4	1,693.3	0.00	0.00	
6,000.0	0.00	0.00	5,720.3	839.9	1,470.4	1,693.3	0.00	0.00	
6,100.0	0.00	0.00	5,820.3	839.9	1,470.4	1,693.3	0.00	0.00	
6,200.0	0.00	0.00	5,920.3	839.9	1,470.4	1,693.3	0.00	0.00	
6,300.0	0.00	0.00	6,020.3	839.9	1,470.4	1,693.3	0.00	0.00	
6,400.0	0.00	0.00	6,120.3	839.9	1,470.4	1,693.3	0.00	0.00	
6,500.0	0.00	0.00	6,220.3	839.9	1,470.4	1,693.3	0.00	0.00	
6,600.0	0.00	0.00	6,320.3	839.9	1,470.4	1,693.3	0.00	0.00	
6,700.0	0.00	0.00	6,420.3	839.9	1,470.4	1,693.3	0.00	0.00	
6,800.0	0.00	0.00	6,520.3	839.9	1,470.4	1,693.3	0.00	0.00	
6,900.0	0.00	0.00	6,620.3	839.9	1,470.4	1,693.3	0.00	0.00	
7,000.0	0.00	0.00	6,720.3	839.9	1,470.4	1,693.3	0.00	0.00	
7,100.0	0.00	0.00	6,820.3	839.9	1,470.4	1,693.3	0.00	0.00	
7,200.0	0.00	0.00	6,920.3	839.9	1,470.4	1,693.3	0.00	0.00	
7,300.0	0.00	0.00	7,020.3	839.9	1,470.4	1,693.3	0.00	0.00	

## Planning Report

<b>Database:</b>	EDM 5000.1 US Multi Users DB	<b>Local Co-ordinate Reference:</b>	Well WF03F-14 H15 596
<b>Company:</b>	EnCana Oil & Gas (USA) Inc	<b>TVD Reference:</b>	KBE @ 6453.0ft (Original Well Elev)
<b>Project:</b>	North Piceance	<b>MD Reference:</b>	KBE @ 6453.0ft (Original Well Elev)
<b>Site:</b>	H15 596 (S15-T5S-96W)	<b>North Reference:</b>	True
<b>Well:</b>	WF03F-14 H15 596	<b>Survey Calculation Method:</b>	Minimum Curvature
<b>Wellbore:</b>	DD		
<b>Design:</b>	Plan #1		

Planned Survey									
Measured Depth (ft)	Inclination (°)	Azimuth (°)	Vertical Depth (ft)	+N/-S (ft)	+E/-W (ft)	Vertical Section (ft)	Dogleg Rate (°/100ft)	Build Rate (°/100ft)	Comments / Formations
7,400.0	0.00	0.00	7,120.3	839.9	1,470.4	1,693.3	0.00	0.00	
7,500.0	0.00	0.00	7,220.3	839.9	1,470.4	1,693.3	0.00	0.00	
7,600.0	0.00	0.00	7,320.3	839.9	1,470.4	1,693.3	0.00	0.00	
7,700.0	0.00	0.00	7,420.3	839.9	1,470.4	1,693.3	0.00	0.00	
7,800.0	0.00	0.00	7,520.3	839.9	1,470.4	1,693.3	0.00	0.00	
7,900.0	0.00	0.00	7,620.3	839.9	1,470.4	1,693.3	0.00	0.00	
8,000.0	0.00	0.00	7,720.3	839.9	1,470.4	1,693.3	0.00	0.00	
8,100.0	0.00	0.00	7,820.3	839.9	1,470.4	1,693.3	0.00	0.00	
8,200.0	0.00	0.00	7,920.3	839.9	1,470.4	1,693.3	0.00	0.00	
8,300.0	0.00	0.00	8,020.3	839.9	1,470.4	1,693.3	0.00	0.00	
8,400.0	0.00	0.00	8,120.3	839.9	1,470.4	1,693.3	0.00	0.00	
8,500.0	0.00	0.00	8,220.3	839.9	1,470.4	1,693.3	0.00	0.00	
8,600.0	0.00	0.00	8,320.3	839.9	1,470.4	1,693.3	0.00	0.00	
8,700.0	0.00	0.00	8,420.3	839.9	1,470.4	1,693.3	0.00	0.00	
8,800.0	0.00	0.00	8,520.3	839.9	1,470.4	1,693.3	0.00	0.00	
8,900.0	0.00	0.00	8,620.3	839.9	1,470.4	1,693.3	0.00	0.00	
9,000.0	0.00	0.00	8,720.3	839.9	1,470.4	1,693.3	0.00	0.00	
9,100.0	0.00	0.00	8,820.3	839.9	1,470.4	1,693.3	0.00	0.00	
9,200.0	0.00	0.00	8,920.3	839.9	1,470.4	1,693.3	0.00	0.00	
9,300.0	0.00	0.00	9,020.3	839.9	1,470.4	1,693.3	0.00	0.00	
9,400.0	0.00	0.00	9,120.3	839.9	1,470.4	1,693.3	0.00	0.00	
9,452.7	0.00	0.00	9,173.0	839.9	1,470.4	1,693.3	0.00	0.00	Rins (TVD) - H15 596 WF03F-14 BHL
9,500.0	0.00	0.00	9,220.3	839.9	1,470.4	1,693.3	0.00	0.00	
9,600.0	0.00	0.00	9,320.3	839.9	1,470.4	1,693.3	0.00	0.00	
9,602.7	0.00	0.00	9,323.0	839.9	1,470.4	1,693.3	0.00	0.00	Drillers TD @ 9323' TVD
9,700.0	0.00	0.00	9,420.3	839.9	1,470.4	1,693.3	0.00	0.00	
9,800.0	0.00	0.00	9,520.3	839.9	1,470.4	1,693.3	0.00	0.00	
9,900.0	0.00	0.00	9,620.3	839.9	1,470.4	1,693.3	0.00	0.00	
10,000.0	0.00	0.00	9,720.3	839.9	1,470.4	1,693.3	0.00	0.00	
10,100.0	0.00	0.00	9,820.3	839.9	1,470.4	1,693.3	0.00	0.00	
10,200.0	0.00	0.00	9,920.3	839.9	1,470.4	1,693.3	0.00	0.00	
10,279.7	0.00	0.00	10,000.0	839.9	1,470.4	1,693.3	0.00	0.00	Permit TD @ 10000'

Targets									
Target Name									
- hit/miss target	Dip Angle (°)	Dip Dir. (°)	TVD (ft)	+N/-S (ft)	+E/-W (ft)	Northing (ft)	Easting (ft)	Latitude	Longitude
- Shape									
H15 596 WF03F-14 TOC - plan hits target center - Point	0.00	0.00	5,613.0	839.9	1,470.4	1,661,173.68	2,256,030.51	39° 37' 8.45 N	108° 8' 28.75 W
H15 596 WF03F-14 BHL - plan hits target center - Rectangle (sides W30.0 H50.0 D0.0)	0.00	0.00	9,173.0	839.9	1,470.4	1,661,173.68	2,256,030.51	39° 37' 8.45 N	108° 8' 28.75 W



## Planning Report

<b>Database:</b>	EDM 5000.1 US Multi Users DB	<b>Local Co-ordinate Reference:</b>	Well WF03F-14 H15 596
<b>Company:</b>	EnCana Oil & Gas (USA) Inc	<b>TVD Reference:</b>	KBE @ 6453.0ft (Original Well Elev)
<b>Project:</b>	North Piceance	<b>MD Reference:</b>	KBE @ 6453.0ft (Original Well Elev)
<b>Site:</b>	H15 596 (S15-T5S-96W)	<b>North Reference:</b>	True
<b>Well:</b>	WF03F-14 H15 596	<b>Survey Calculation Method:</b>	Minimum Curvature
<b>Wellbore:</b>	DD		
<b>Design:</b>	Plan #1		

Formations						
Measured Depth (ft)	Vertical Depth (ft)	Name	Lithology	Dip (°)	Dip Direction (°)	
5,852.7	5,573.0	WF (TVD)		0.00		
5,892.7	5,613.0	TOG (TVD)		0.00		
9,452.7	9,173.0	Rlns (TVD)		0.00		

Plan Annotations					
Measured Depth (ft)	Vertical Depth (ft)	Local Coordinates			
		+N/-S (ft)	+E/-W (ft)	Comment	
200.0	200.0	0.0	0.0	KOP @ 200'	
853.7	841.0	54.9	96.2	EOB; Inc=19.6°	
5,239.1	4,972.0	784.9	1,374.2	Start Drop -3.00	
5,892.7	5,613.0	839.9	1,470.4	EOD; Inc=0°	
9,602.7	9,323.0	839.9	1,470.4	Drillers TD @ 9323' TVD	
10,279.7	10,000.0	839.9	1,470.4	Permit TD @ 10000'	